

Electrolux

SPARE PARTS LIST
Gas (Builtin hobs, with contro
2252

| Item | PNC | ELC | Brand | Model | Market |
|------|-----------|-----|------------|------------|--------|
| A | 949640311 | 03 | Electrolux | EGH6343BOX | THE |

SAFETY WARNING

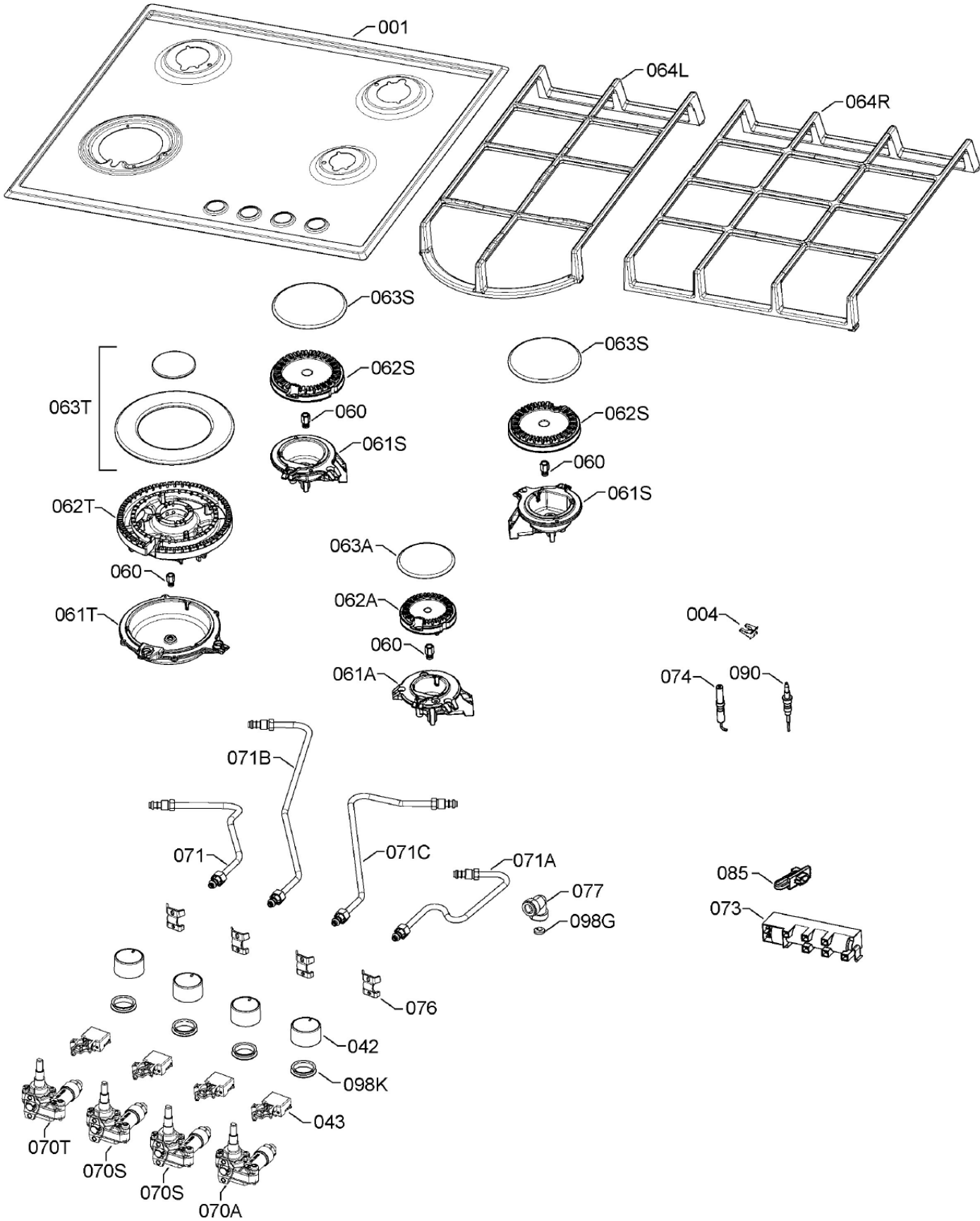
Always turn off and unplug the machine before detaching any parts.

When servicing machines, do not remove ANY detachable parts while the machine is powered. The reason is internal faults may cause shorts to components that are normally at low voltage presenting a shock hazard.

Gas (Builtin hobs,
with contro

Electrolux Thailand Co.,Ltd.
1910 Electrolux Building
New Petchburi Rd. Bangkok
Huaykwang
Bangkok , 10310
Tel : +662 725 9000

Publication-No.
161206



| | | | | | |
|------|-----------|-----|------------|------------|--------|
| Item | PNC | ELC | Brand | Model | Market |
| A | 949640311 | 03 | Electrolux | EGH6343BOX | THE |

| Pos. | Part No. | Description |
|-------------|-----------------|---|
| 001 | 140015091063 | Work top,inox,Electrolux,594x510mm |
| 004 | 140033817010 | Fixing spring,spark plug,thermocouple |
| 042 | 8073833215 | Knob,inox |
| 043 | 3570571400 | Switch,complete |
| 060 | 4055171310 | Nozzle set,GN, (G20-20mbar) |
| 060 | 50298147005 | Nozzle set,LPG, (G30-G31) |
| 061A | 140014838035 | Burner body,auxiliary |
| 061S | 140014839033 | Burner body,semi-rapid |
| 061T | 140014841013 | Burner body,triple crown burner |
| 062A | 3540138025 | Crown,small burner |
| 062S | 3540137027 | Crown,medium burner |
| 062T | 3577259074 | Crown,triple crown burner |
| 063A | 3540139098 | Burner top,small,mat black |
| 063S | 3540139080 | Burner top,medium,mat black |
| 063T | 3581992181 | Burner top,triple crown burner,assembly |
| 064L | 8081303011 | Grid,pan support,left |
| 064R | 8081304019 | Grid,pan support,right |
| 070A | 3577306115 | Gas tap,auxiliary,d=0.28 G20-20mbar |
| 070S | 3577306107 | Gas tap,semi-rapid,auxiliary,d=0.32 G20-20mbar |
| 070T | 3577306412 | Gas tap,triple crown burner,d=0.56 G20-20mbar |
| 071 | 8082076012 | Gas pipe,front,left |
| 071A | 8082115018 | Gas pipe,front,right |
| 071B | 8082117014 | Gas pipe,rear,left |
| 071C | 8082118012 | Gas pipe,rear,right |
| 073 | 3572079030 | Impulse generator |
| 074 | 140013291046 | Spark plug,ignition,triple crown burner,L=450mm |
| 074 | 140013306042 | Spark plug,ignition,L=300 |
| 076 | 3577334026 | Sleeve,fixing,tap |
| 077 | 3540029034 | Connector,elbow,1/2" |
| 085 | 3556230013 | Cable grommet |

| | | | | | |
|------|-----------|-----|------------|------------|--------|
| Item | PNC | ELC | Brand | Model | Market |
| A | 949640311 | 03 | Electrolux | EGH6343BOX | THE |

| Pos. | Part No. | Description |
|-------------|-----------------|--|
| 090 | 3570563019 | Thermocouple,ORKLI L=275mm |
| 090 | 3570563068 | Thermocouple,ORKLI L=450mm |
| 090 | 3570564017 | Thermocouple,triple crown burner,ORKLI L=275 |
| 098G | 3565193012 | Gasket,gas,elbow,1/2" |
| 098K | 3556112013 | Sealing,antioverflow gasket |
| 999 | 3543294031 | Bolt,gas tap,M4x17 T20 |
| 999 | 3548041049 | Tie,fixing,work top,6 pz. |
| 999 | 3565189119 | Mastic,seal,L=550 |
| 999 | 3570755300 | Power cord |
| 999 | 4055328217 | Kit,Buffer,Grid,12pcs. |
| 999 | 50294267005 | Screw pack,fixing,-collar,2,9x13 - 24pz |
| 999 | 8673219948 | User manual ,EN |