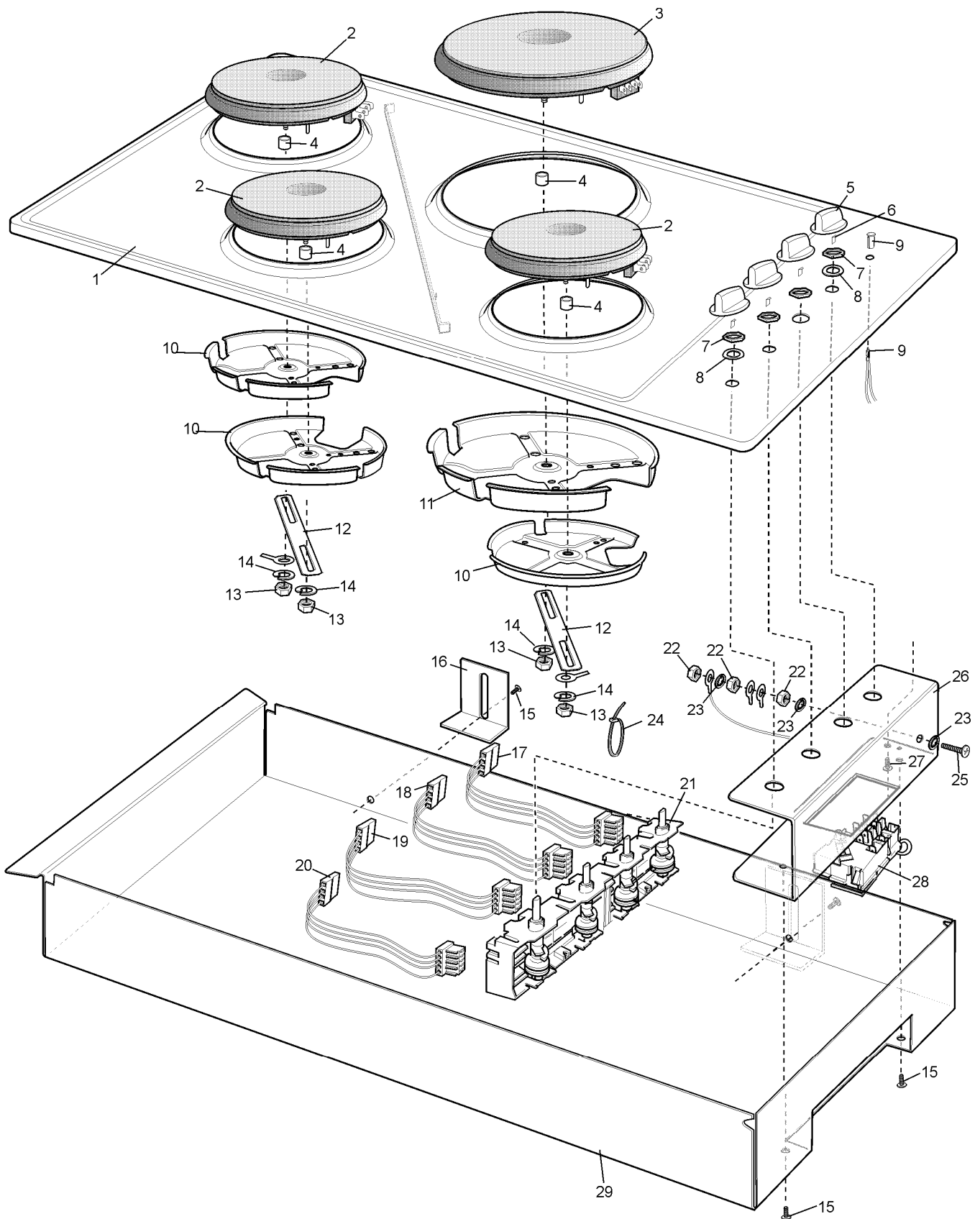


ITEM	PART N°	DESCRIPTION	EX. 7177	S	W
1	A21063401	HOB C/T SCR		1	
	A21063301	ENAMEL TOP PLATE			1
2	0122 004 564	ELEMENT EGO 2000W 180DIA (HI)		1	1
3	0122 004 563	ELEMENT EGO 1500W 145DIA (HI)		3	3
4	A08860407	KNOB SILVER HZ SOLID		4	4
5	N.P.N.	NOT USED		4	4
6	0065 009 254	NUT METRIC M12 X 1.00		4	4
7	0756 001 023	WASHER NYLON EGO 7POS SWITCH		4	4
8	0208 003 413	SEAL HOB 2320MM BLACK		1	1
9	0609 100 269	LIGHT INDICATOR		1	1
10	0005 001 166	CLAMP PAN Ø180MM ELUX EGO		1	1
11	0005 001 167	CLAMP PAN Ø145MM ELUX EGO		3	3
12	0030 024 111	BRACKET ANTI-ROTATE SOLID C/T		2	2
13	460015	WASHER SPRING ¼" ST/ST		4	4
14	0755 001 018	NUT HEX M6 ST/NI PLATED		8	8
15	445300	SPACER TUBE ALUMINIUM 6MM		8	8
16	0712 003 037	CABLE TIE 4" PLT1M-M30		3	3
17	0173 100 127	WIRE HARNESS 7POS RR 150MM GREEN		1	1
18	0173 100 126	WIRE HARNESS 7 POSITION LR 400MM YELLOW		1	1
19	0173 100 125	WIRE HARNESS 7 POSITION LF 400MM RED		1	1
20	0173 100 124	WIRE HARNESS 7 POSITION RF 150MM WHITE		1	1
21	0534 001 707	SWITCH GANG 7 POSITION EGO		1	1
22	305 3859 02	BURNER BOX CORAL WASHED		1	1
23	0701 002 116	SCREW #10 X ¾" PAN PHIL ZC AB		1	1
24	561804340	Terminal box		1	1
25	0706 009 002	WASHER S/P INT 3/16" ZC		2	2
26	*0005 001 168	CLAMP BURNER BOX		4	4
27	*46667	SCREW ¾" X 8 PAN ZC		4	4

MODEL: CHS942WB



ITEM	PART N°	DESCRIPTION	EX. 7176	QTY
1	A21062801	ENAMEL TOP PLATE		1
2	0122 004 563	ELEMENT EGO 1500W 145DIA (HI)		3
3	0122 004 564	ELEMENT EGO 2000W 180DIA (HI)		1
4	0271 001 211	SPACER TUBE ALUMINIUM 6MM		4
5	A08860407	KNOB SILVER HZ SOLID		4
6	N.P.N.	NOT USED		4
7	0065 009 254	NUT METRIC M12 X 1.00		4
8	0756 001 023	WASHER NYLON EGO 7 POSITION SWITCH		2
9	0609 100 269	LIGHT INDICATOR		1
10	0005 001 167	CLAMP PAN Ø145MM ELUX EGO		3
11	0005 001 166	CLAMP PAN Ø180MM ELUX EGO		1
12	0030 024 111	BRACKET ANTI-ROTATE SOLID C/T		2
13	0755 001 018	NUT HEX M6 ST/NI PLATED		4
14	0706 006 031	WASHER SPRING ¼" STAINLESS STEEL		4
15	0701 009 022	SCREW #8 X 12 W/HD PH NIB ZC		5
16	0030 023 153	BRACKET INSTALLATION		2
17	0173 100 131	WIRE HARNESS 7 POSITION LR 650MM GREEN		1
18	0173 100 130	WIRE HARNESS 7 POSITION LF 550MM YELLOW		1
19	0173 100 125	WIRE HARNESS 7 POSITION RR 400MM RED		1
20	0173 100 124	WIRE HARNESS 7 POSITION RF 150MM WHITE		1
21	0534 001 707	SWITCH GANG 7 POSITION EGO		1
22	0705 002 053	NUT HEX 3/16BSW STEEL NI		3
23	0706 009 002	WASHER SHAKEPROOF INT 3/16" ZC		3
24	0712 003 037	CABLE TIE 4" PLT1M-M30		3
25	0700 027 013	SCREW 3/16BSW X 1" PAN #2PH NI		1
26	305 4979 00	BRACKET COVER ELECTRIC RECTANGULAR C/T		1
27	0701 002 116	SCREW #10 X ¾" PAN PHIL ZC AB		1
28	387 3626 00	MAINS TERMINAL		1
29	0028 025 356	COVER UNIT 900MM ELECTRIC		1