



# Electrolux

## SPARE PARTS LIST

Fabric Care

3485

| Item | PNC       | ELC | Brand      | Model   | Market |
|------|-----------|-----|------------|---------|--------|
| A    | 900273350 | 00  | Electrolux | EGS2103 | THE    |
| A    | 900273352 | 00  | Electrolux | EGS2103 | MYH    |

### **SAFETY WARNING**

**Always turn off and unplug the machine before detaching any parts.**

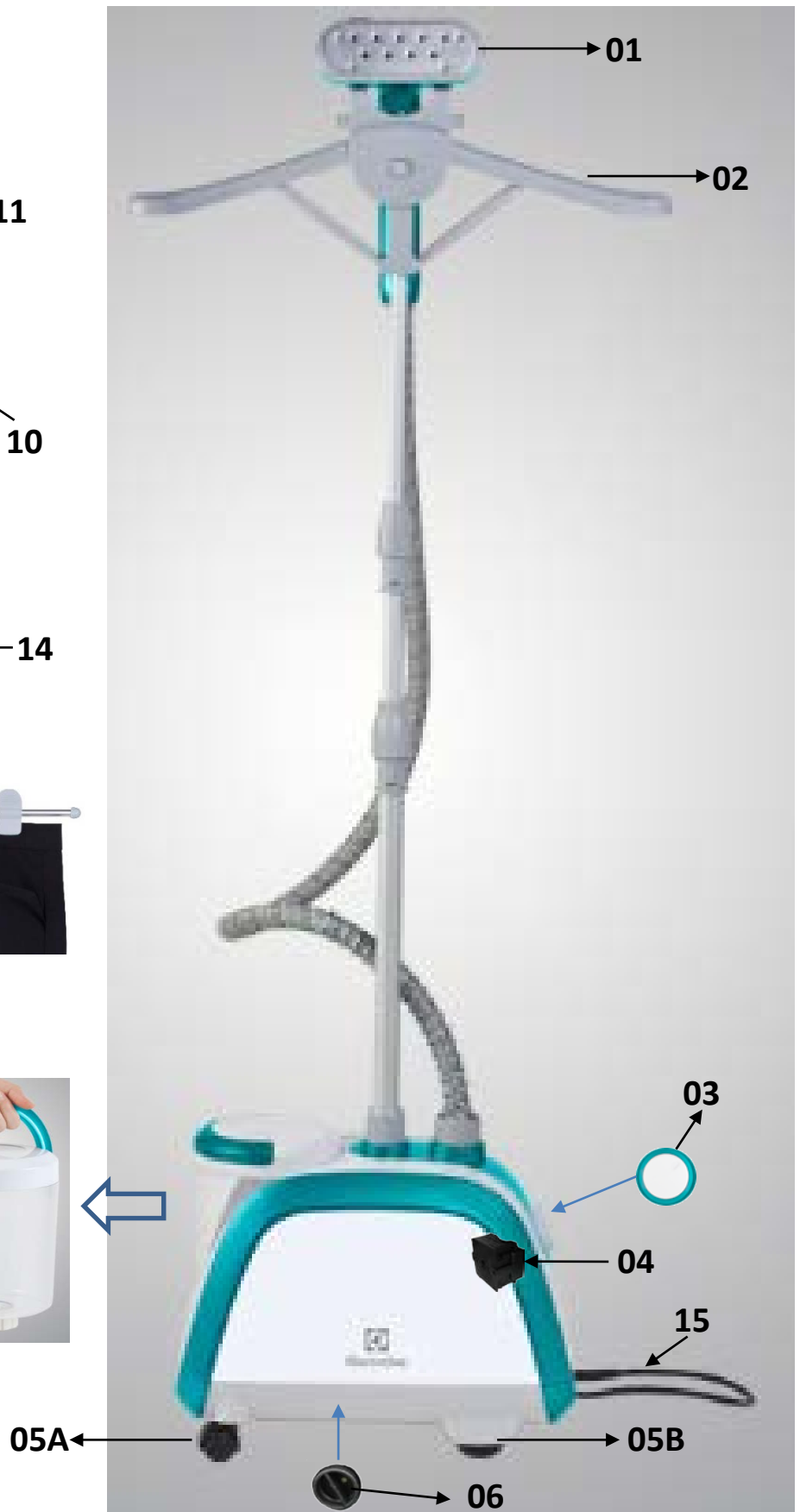
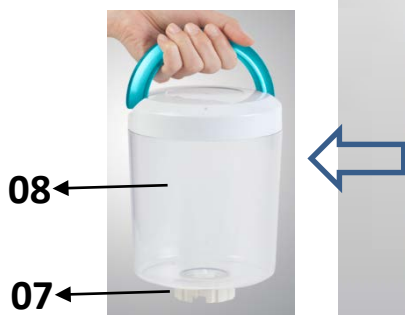
When servicing machines, do not remove ANY detachable parts while the machine is powered. The reason is internal faults may cause shorts to components that are normally at low voltage presenting a shock hazard.

|   |             |  |
|---|-------------|--|
|   | Fabric Care |  |
| <p>Electrolux Thailand Co.,Ltd.<br/> 1910 Electrolux Building<br/> New Petchburi Rd.<br/> Bangkapi<br/> Huaykwang<br/> Bangkok , 10310<br/> Tel : +662 725 9000</p> |             |  |

Publication-No.  
140612

Model : EGS2103

Ex. View Drawing



| Item | PNC       | ELC | Brand      | Model   | Market |
|------|-----------|-----|------------|---------|--------|
| A    | 900273350 | 00  | Electrolux | EGS2103 | THE    |
| A    | 900273352 | 00  | Electrolux | EGS2103 | MYH    |

| Pos. | Part No.     | Description                      |
|------|--------------|----------------------------------|
| 01   | F43G0500028R | steam head assy                  |
| 02   | F37G2400002R | cloth rack assy                  |
| 03   | Q956007AD24  | knob                             |
| 04   | D3087000002R | switch                           |
| 05A  | F38G0300001R | universal wheels                 |
| 05B  | A4303150005R | directional wheels               |
| 06   | A9501780004R | drain valve                      |
| 07   | A9506260003R | non-returning valve knob assy.   |
| 08   | B9562960601R | water tank                       |
| 09   | F42G0900003R | Line clamp                       |
| 10   | F99G1000003  | hair brush                       |
| 11   | F47G1300002  | Static brush                     |
| 12   | Z1620000006  | scald proof glove                |
| 13   | F45G1100003R | trousers rack                    |
| 14   | F46G1200003R | Fixing clamp                     |
| 15   | D1AF10Z3001R | cord (TH Plug) For PNC 900273350 |
| 16   | D1AH20Z3001R | cord (UK Plug) For PNC 900273352 |

