

Electrolux

ELECTROLUX HOME PRODUCTS PTY LTD

ABN 51 004 762 341

Technical Publication N° RE1097

Issue: 1

Date: 09/2021

PARTS & VIEWS *Westinghouse* ***Frost Free*** ***“C” Series*** ***Top Mount Refrigerator***



WTB4600WC

WTB5400WC

MODEL

PNC

WTB4600WC-L

92506083303

WTB4600WC-R

92506083203

WTB5400WC-L

92506083902

WTB5400WC-R

92506083803

MAINTENANCE LEVEL CHANGE SUMMARY

ML	Description	Product Release Date
00	First release	06/2020

MODEL NUMBER IDENTIFICATION

BRAND		TYPE		CONTROL		CAPACITY A		CAPACITY B (Refer Note 4)		FEATURE		DESIGN FEATURE		COLOUR		SERIES		DIVIDER	HAND		PLUG TYPE (COUNTRY)*	
CODE	BRAND	CODE	BUILD	CODE	BUILD	CODE	CAPACITY	CODE	CAPACITY	CODE	FEATURE	CODE	FEATURE	CODE	COLOUR	CODE	SERIES		CODE	HAND	CODE	PLUG TYPE
A	AED	B	BOTTOM FREEZER	E	DISPLAY ELECTRONIC	0	0-99 LITRES	0	= 0 LITRES	0	PLAIN	0	PLAIN	A	ARCTIC STEEL (SPB015)	A	NEW MODEL RANGE		R	RIGHT HAND	A	AUSTRALIAN STANDARD
C	CHEF	C	CHEST FREEZER	H	ELECTRO MECHANICAL (MANUAL)	1	100-199 LITRES	1	= 10 LITRE	1	EXCLUSIVE MODEL POLAR HANDLE + INTERNAL ICE	1	BUILT IN/INTEGRATED	M	SLATE SILVER (SPB016)	B	FIRST SERIES CHANGE		L	LEFT HAND	B	BRITISH 3 PIN SQUARE
D	SISIL	F	UPRIGHT FREEZER	S	STANDARD ELECTRONIC	2	200-299 LITRES	2	= 20 LITRE	2	ICE MAKER ONLY	2	POCKET HANDLE	S	STAINLESS STEEL	C	SECOND SERIES CHANGE		X	NO HAND/REVERSIBLE	E	EUROPEAN 2 PIN
E	ELECTROLUX	H	FRENCH DOOR	B	BASIC ELECTRONIC	3	300-399 LITRES	3	= 30 LITRE	3	BAR ONLY	3	3 DOOR/VARIABLE TEMPERATURE COMPARTMENT	W	WHITE	D	ETC		D	DRAWER	S	SOUTH AFRICAN
F	FRIGIDAIR	R	ALL REFRIGERATOR			4	400-499 LITRES	4	= 40 LITRE	4	WATER DISPENSER ONLY	4	POLAR HANDLE	P	PACIFIC SILVER	E	ETC		N	SxS, NON HANDED	R	BRITISH 3 PIN ROUND
G	FRIGIDAIR GALLERY	S	SIDE X SIDE			5	500-599 LITRES	5	= 50 LITRE	5	LOCK	5	FLAT GLASS DOOR/ WINE COOLER	D	DYNAMIC SILVER	X	EXPORT ASIAN S/STEEL		C	DRAWER FULLY CONVERTIBLE (MID DRAWER FUNCTIONALITY)	T	THAI BLACK PLUG
H	WHITE WESTINGHOUSE	T	TOP FREEZER			6	600-699 LITRES	6	= 60 LITRE	6	ICE MAKER ONLY WITH WATER DISPENSER	6	CURVED GLASS DOOR	C	CHAMPAGNE	W	EXPORT ASTAN WHITE		V	DRAWER VARIABLE (MID DRAWER FUNCTIONALITY)	SA	SAUDI ARABIA 220V 60HZ
I	ELECTROLUX ICON	P	PANTRY			7	700-799 LITRES	7	= 70 LITRE	7	ICE & WATER DISPENSER	7	CLAD/E-LINE (FLAT)	V	VCM 443	Z	R600A TRIALS		F	DRAWER FREEZER (MID DRAWER FUNCTIONALITY)	PH	PHILIPPINES 220V 60HZ
K	ARTHUR MARTIN	Q	QUATRO SxS			8	800-899 LITRES	8	= 80 LITRE	8	ICE & WATER & BAR	8	ASSIST HANDLE	B	BLACK/EBONY						IL	ISRAEL
P	PHILCO	M	MULTI DOOR			9	900 + LITRES	9	= 90 LITRE	9	ICE & WATER DISPENSER & INTERNET CONNECTIVITY	9	BUILT IN/INTEGRATED (FLAT)	X	BLACK STAINLESS						MY	MALAYSIA/SINGAPORE
R	ARTHUR MARTIN	W	WINE COOLER											G	GOLD					IN	INDONESIA	
S	SIMPSON	I	INTERNAL ICE BOX																	VN	VIETNAM	
U	REX ELECTROLUX																			TH	THAILAND	
W	WESTINGHOUSE																			AU	AUSTRALIAN/INZ	
Z	ZANUSSI																			EU	EUROPE	
M	HIMMART																			CN	CHINA	
																				SG	SINGAPORE	
																				JP	JAPAN	
																				IN	INDIA	
																				ZA	SOUTH AFRICA	
																				CL	CHILE	
																				AR	ARGENTINA	
																				MX	MEXICO	
																				BR	BRAZIL 220V	
																				BZ	BRAZIL 127V	
																				NA	NORTH AMERICA	
																				PU	PANAMA, URUGUAY, BOLIVIA	
																				CA	CANADA, CARIBBEAN 220V	
																				CC	CANADA, CARIBBEAN 127V	
																				AE	GCC GROUP	
																				SK	SOUTH KOREA	

NOTE: THIS LETTER ONLY FOR EXPORT DOMESTIC PRODUCT IS BLANK

CONTENTS

MAINTENANCE LEVEL CHANGE SUMMARY2

MODEL NUMBER IDENTIFICATION.....2

DOOR PANELS – Quick Guide3

EXPLODED VIEWS & PARTS LISTS.....4

MODEL: WTB4600WC-L & R and WTB5400WC-L & R.....4

CABINET INTERIOR.....4

MODEL: WTB4600WC-L & R and WTB5400WC-L & R.....6

DOOR ASSEMBLY6

MODEL: WTB4600WC-L & R and WTB5400WC-L & R.....8

FREEZER SYSTEM PARTS8

MODEL: WTB4600WC-L & R and WTB5400WC-L & R.....9

SYSTEM PARTS COMPRESSOR COMPARTMENT9

DIAGRAMS.....10

WIRING DIAGRAM10

NOTE: In Parts Listings

N.I.	=	Not Illustrated
N.P.A.	=	No Part Available
N.P.N.	=	Not Used on this Model

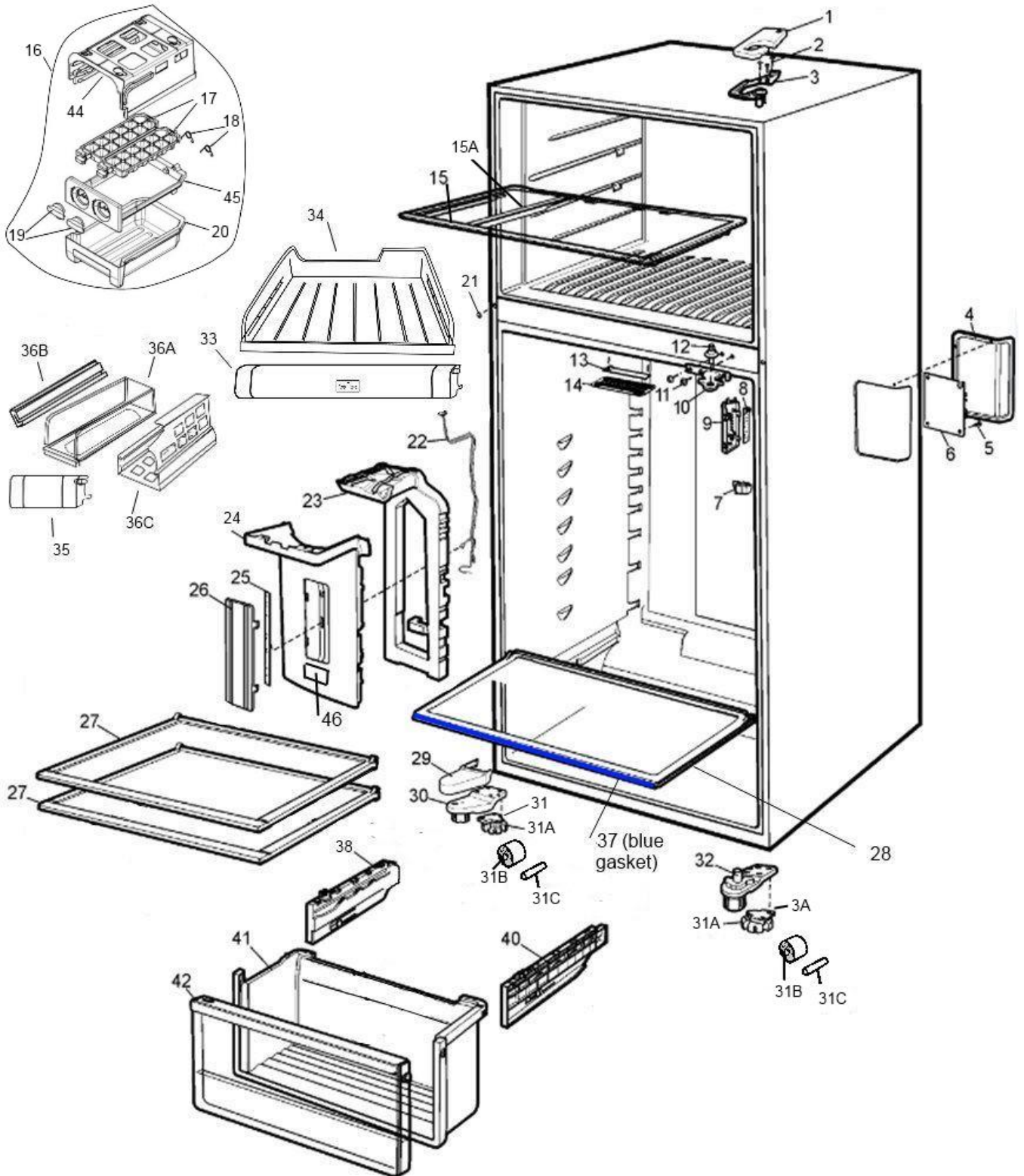
DOOR PANELS – Quick Guide

PART No.	DESCRIPTION	MODEL	PNC
A16287027	DOOR SPARE FC	WTB4600WC-L	925060833
A16287083	DOOR SPARE FZR	WTB4600WC-L	925060833
A16287026	DOOR SPARE FC	WTB4600WC-R	925060832
A16287082	DOOR SPARE FZR	WTB4600WC-R	925060832
A16287030	DOOR SPARE FC	WTB5400WC-R	925060838
A16287084	DOOR SPARE FZR	WTB5400WC-R	925060838
A16287031	DOOR SPARE FC	WTB5400WC-L	925060839
A16287085	DOOR SPARE FZR	WTB5400WC-L	925060839

EXPLODED VIEWS & PARTS LISTS

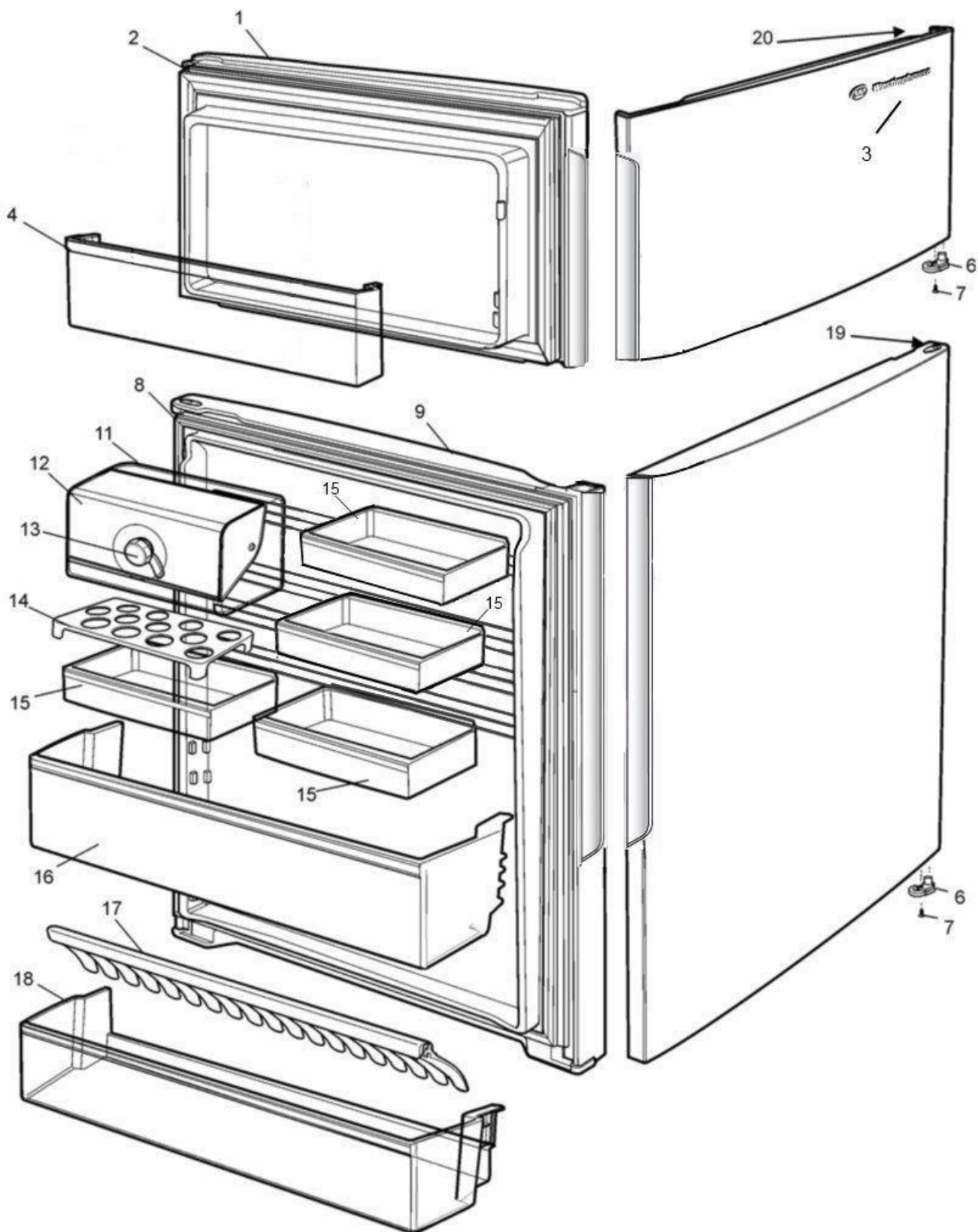
MODEL: WTB4600WC-L & R and WTB5400WC-L & R

CABINET INTERIOR



ITEM	PART No.	DESCRIPTION	QTY 4600WC-L	QTY 4600WC-R	QTY 5400WC-L	QTY 5400WC-R
1	A00828102	COVER TOP HINGE LEFT WHT	1		1	
	A00828002	COVER TOP HINGE RIGHT WHT		1		1
2	811949401	SCREW TRILOB M5X16	3	3	3	3
3	A00354402	HINGE TOP LEFT	1		1	
	A00354401	HINGE TOP RIGHT		1		1
4	A01277301	COVER MAIN PCB ERF1600	1	1	1	1
NI	A01278702	HOUSING REAR PCB ADAPTER	1	1	1	1
5	N.P.N.	SCREW PCB	1	1	1	1
6	A01028513	PCB MAIN ERF1600	1	1	1	1
7	811943601	SWITCH DOOR	1	1	1	1
8	A00985302	PCBA_UI 1ZONE INTL WHT LED	1	1	1	1
9	A02003302	DISPLAY UI 1ZONE INTL WHT LED	1	1	1	1
10	A01604503	CENTRE HINGE BASE ASSY	1	1	1	1
11	811949401	SCREW TRILOB M5X16	2	2	2	2
12	A01604801	CENTRE HINGE PIN SWING DOOR	1	1	1	1
13	242196207	PCBA 3 LEDS CLUSTER GALAGA	1	1	1	1
14	242202701	LENS 3 LEDS CLUSTER GALAGA	1	1	1	1
15	A00808401	SHELF FZR TF70 ASSY	1	1		
	A00808402	SHELF FZR TF80 ASSY			1	1
15A	A00808501	SUPPORT SHELF DOUB T&S TF	1	1	1	1
16	A01266701	TWIST & SERVE ICE Inc. 17 to 20 & 45	1	1	1	1
20	811956603	BIN ICE COOL MINT	1	1	1	1
21	811971601	COVER SCREW	3	3	3	3
22	Part of (23)	HARNESS MULTIFLOW (A01043502)	1	1	1	1
23	A00812801	MULTIFLOW ASSY LED TF	1	1	1	1
24	Part of (23)	PANEL MULTIFLOW	1	1	1	1
25	807717401	PCB 6 LED LONG	1	1	1	1
26	A01098401	LENS COVER BLUE ASSY	1	1	1	1
27	A00821601	SHELF FC TF70W	2	2		
	A00821602	SHELF FC TF80W			2	2
28	A00822501	SHELF FC TF70W deli ASSY	1	1		
	A00822502	SHELF FC TF80W deli ASSY			1	1
28A	A01890201	DRAWER DELI FC HALF WH ASSY	1	1	1	1
29	A01817907	COVER FOOT LEFT HINGE WHT		1		1
	A01817908	COVER FOOT RIGHT HINGE WHT	1		1	
30	A01829601	FOOT LEFT ASSY	1		1	
	A01829602	FOOT RIGHT ASSY		1		1
31	A01819101	FOOT BASE THREAD	2	2	2	2
31A	A01819302	NUT FOOT BASE THREAD	2	2	2	2
31B	A01819201	ROLLER FOOT FRONT	2	2	2	2
31C	A01808801	AXIS ROLLER FRONT	2	2	2	2
32	A01819902	HINGE BASE LEFT ASSY	1		1	
32	A01819901	HINGE BASE RIGHT ASSY		1		1
33	A00821302	LID CHILL ROOM LARGE TF70	1	1		
	A00821503	LID CHILL ROOM LARGE TF80			1	1
34	A00820702	TRAY CHILL ROOM LARGE TF70W	1	1		
	A00820803	TRAY CHILL ROOM LARGE TF80			1	1
35	A00820603	LID CHILL ROOM SMALL TF 80			1	1
36A	A00820503	TRAY CHILL ROOM SMALL TF 80			1	1
36B	A00813604	RAIL CHILL ROOM LEFT TF	1	1	1	1
	A00813603	RAIL CHILL ROOM RIGHT TF	1	1	1	1
36C	A00813402	SUPPORT CHILL ROOM TF			1	1
37	A02644401	CRISPER GASKET 70	1	1		
	A02644402	CRISPER GASKET 80			1	1
38	A01475403	SUPPORT CRISPER RH (Part of item 28)	1	1	1	1
40	A01475404	SUPPORT CRISPER LH (Part of item 28)	1	1	1	1
41	A00825302	DRAWER CRISPER BODY	1	1		
	A00826202	DRAWER CRISPER BODY			1	1
42	A01295912	DRAWER CRISPER FR TF70 ASY	1	1		
	A01295913	DRAWER CRISPER FR TF80 ASY			1	1
44	A01203402	SUPPORT BRACKET for T&S	1	1	1	1
45	A01212902	FRAME T&S 2 TRAY ASSY WHITE	1	1	1	1
46	A00685409	COVER DEODORIZER WHT FS	1	1	1	1
N.I.	A00825721	DRAWER CRIS TF80 ASSY INC. 41&42			1	1
N.I.	A00825720	DRAWER CRIS TF70 FLAT WH ASY INC. 41&42	1	1		

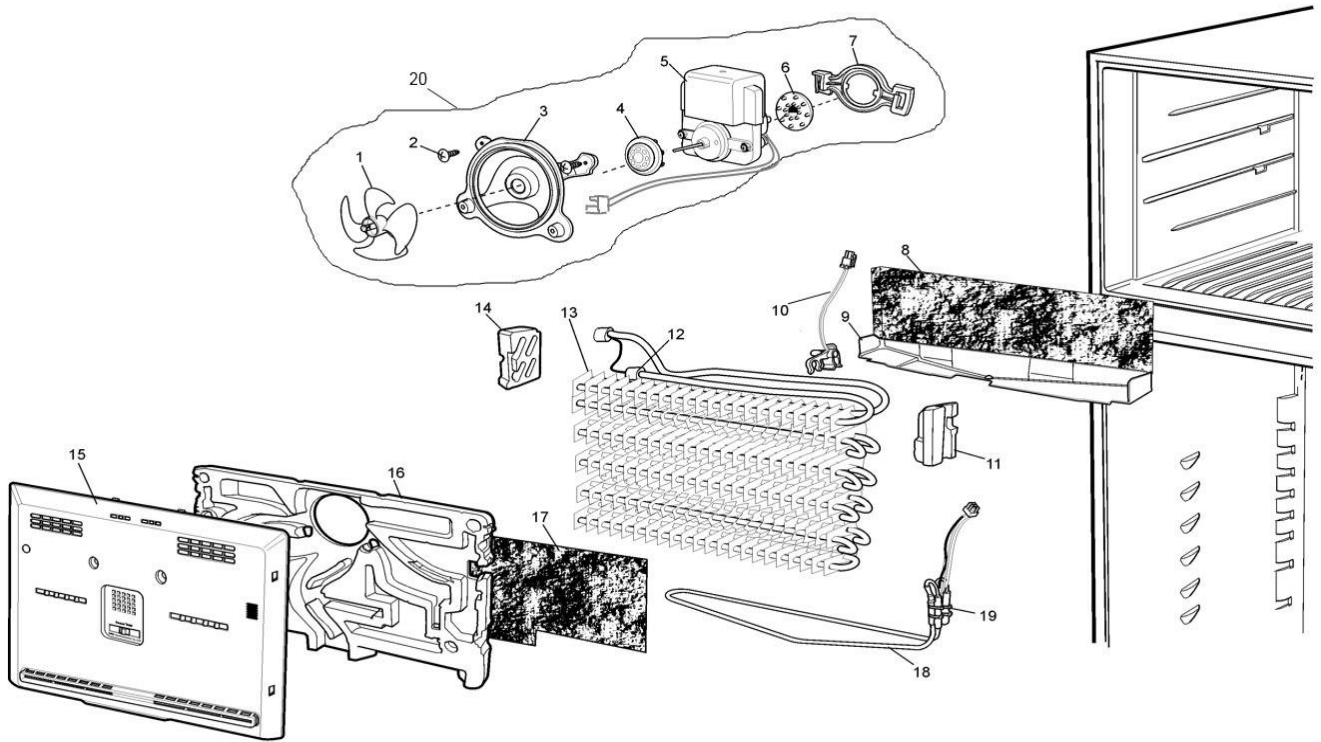
MODEL: WTB4600WC-L & R and WTB5400WC-L & R
DOOR ASSEMBLY



ITEM	PART No.	DESCRIPTION	QTY 4600WC-L	QTY 4600WC-R	QTY 5400WC-L	QTY 5400WC-R
1	A16287082	FREEZER DOOR PANEL RH		1		
	A16287083	FREEZER DOOR PANEL LH	1			
	A16287084	FREEZER DOOR PANEL RH				1
	A16287085	FREEZER DOOR PANEL LH			1	
2	811988540	GASKET FZR TF70	1	1		
	811988541	GASKET FZR TF80			1	1
3	1458193	BADGE WESTINGHOUSE	1	1	1	1
4	A00802302	BIN FZR DOOR TF70	1	1		
	A00802702	BIN FZR DOOR TF80			1	1
6	A01046503	BEARING AUTO CLOSER L TF WHT	2		2	
	A01046501	BEARING AUTO CLOSER R TF WHT		2		2
7	A01846301	SCREW BEARING	2	2	2	2
8	811988542	GASKET FC TF70	1	1		
	811988543	GASKET FC TF80			1	1
9	A16287026	FRIDGE DOOR PANEL RH		1		
	A16287027	FRIDGE DOOR PANEL LH	1			
	A16287030	FRIDGE DOOR PANEL RH				1
	A16287031	FRIDGE DOOR PANEL LH			1	
11	A00803103	DOOR BIN LOCKABLE TF70 ASSY INCLUDES PARTS 12 & 13	1	1		
	A00803107	DOOR BIN LOCKABLE TF80 ASSY INCLUDES PARTS 12 & 13			1	1
14	A00807801	EGG TRAY	1	1		
	A00807802	EGG TRAY			1	1
15	A00804206	DOOR BIN FLEX 70 WH-HOTFOIL	4	4		
	A00804207	DOOR BIN FLEX 80 WH-HOTFOIL			4	4
16	A00804708	DOOR BIN FC SHALL 70 WH-HOTFOIL	1	1		
	A00804709	DOOR BIN FC SHALL 80 WH-HOTFOIL			1	1
17	A00805604	DOOR BIN FINGER TF70W	1	1		
	A00807502	DOOR BIN FINGER TF80			1	1
18	A00805402	DOOR BIN FC BOTTLE TF70W	1	1		
	A00807704	DOOR BIN FC BOTTLE TF80			1	1
19	A01068401	BEARING HINGE FC TOP TF WHT L	1		1	
	A01068403	BEARING HINGE FC TOP TF WHT R		1		1
20	A01069002	BEARING HINGE FZR TOP CLOSED	1	1	1	1

MODEL: WTB4600WC-L & R and WTB5400WC-L & R

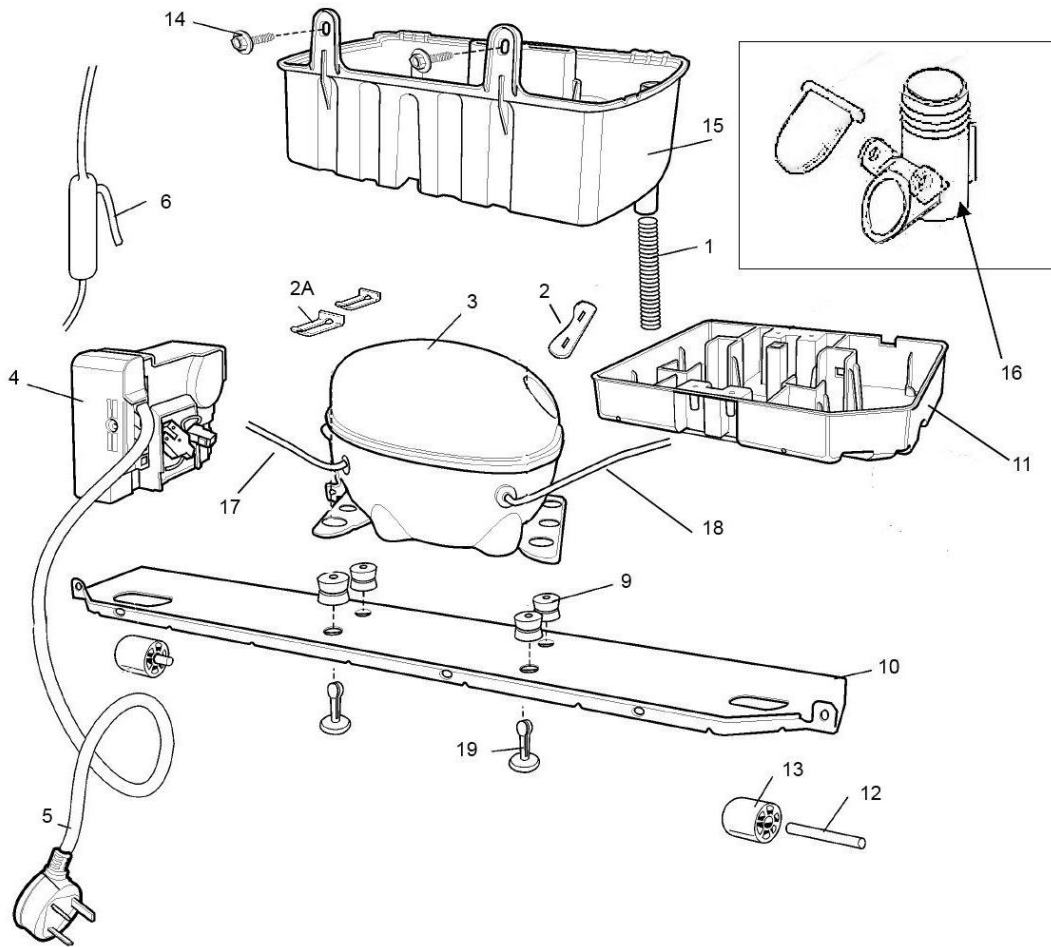
FREEZER SYSTEM PARTS



ITEM	PART No.	DESCRIPTION	QTY 4600WC-L	QTY 4600WC-R	QTY 5400WC-L	QTY 5400WC-R
1	1451299	BLADE FAN	1	1	1	1
2	NPN	SCREW	1	1	1	1
3	811974401	SHROUD FAN	1	1	1	1
4	811972801	GROMMET FAN SIDE	2	2	2	2
5	8090692081	MOTOR FAN 240V/50HZ	1	1	1	1
6	1446048	GROMMET, FAN MOUNTING	2	2	2	2
7	811974301	BRACKET SHROUD FAN	1	1	1	1
8	NPN	TAPE SEAL	1	1	1	1
9	A00789401	TRAY EVAP DRAIN TF70W	1	1		
	A01502301	TRAY EVAP DRAIN TF80W			1	1
10	A01257402	HARNESSE SENSOR DEF	1	1	1	1
11	A02332901	SUPPORT EVAPORATOR RIGHT	1	1	1	1
12	811909402	MASTIC RUBBER	1	1	1	1
13	140025853015	EVAPORATOR FF TF70 N	1	1		
	140025853023	EVAPORATOR FF TF80 N			1	1
14	A00789301	SUPPORT EVAPORATOR LEFT	1	1	1	1
15	A00536601	COVER EVAP ASSY TF70 WH/KL	1	1		
	A00536602	COVER EVAP ASSY TF80 WH/KL			1	1
16	A00526801	DUCT EVAPORATOR EPS			1	1
	A00526701	DUCT EVAPORATOR EPS	1	1		
17	811950002	SEAL FOAM EVC SEALER	1	1	1	1
18	A01058206	HEATER DEF R600 240V TF70W	1	1		
	A01058205	HEATER DEF R600 240V TF80W			1	1
19	811980402	CLAMP NTC EVAPORATOR	1	1	1	1
20	811975407	FAN & MOTOR ASSY	1	1	1	1

MODEL: WTB4600WC-L & R and WTB5400WC-L & R

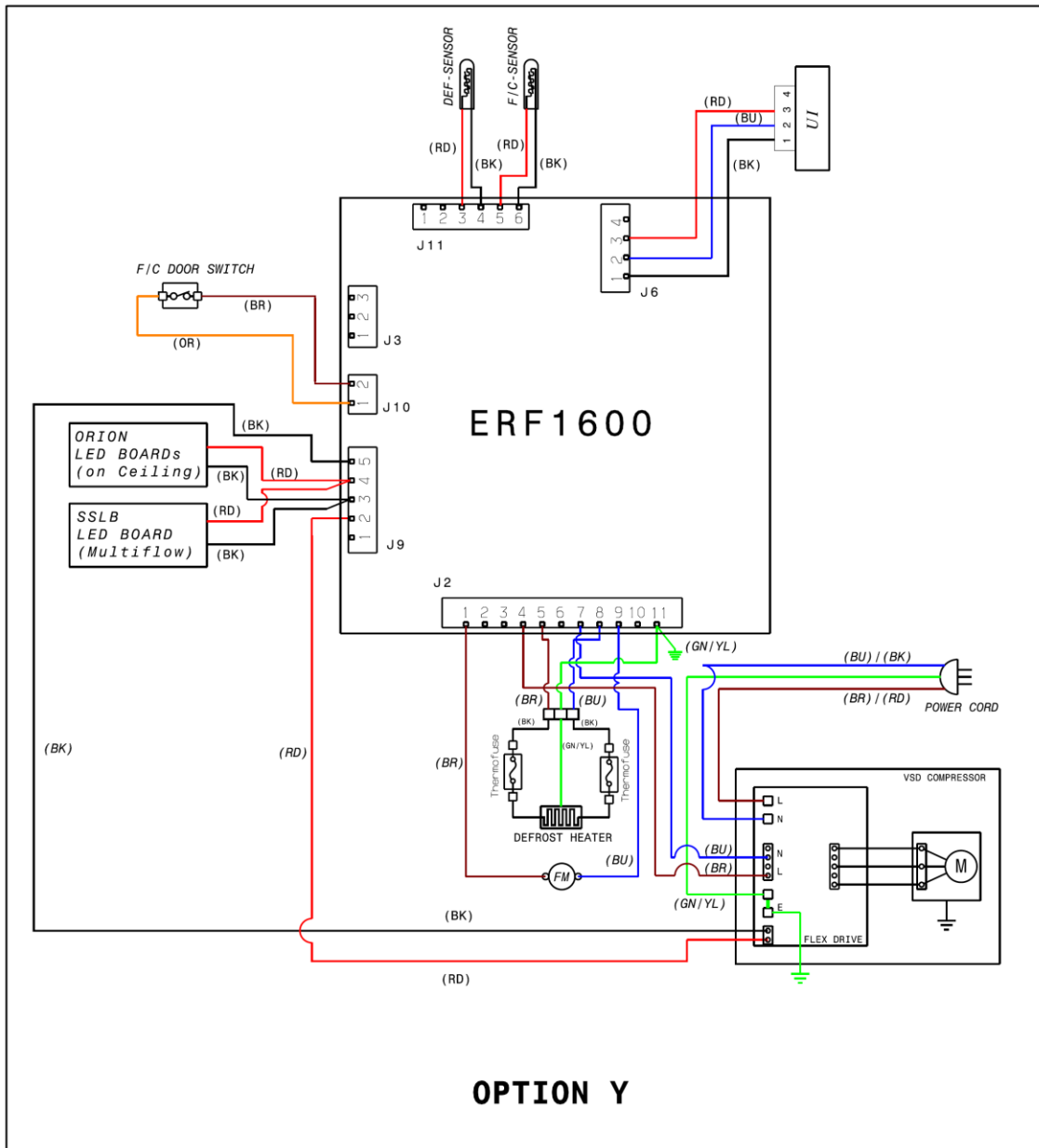
SYSTEM PARTS COMPRESSOR COMPARTMENT



ITEM	PART No.	DESCRIPTION	QTY 4600WC-L	QTY 4600WC-R	QTY 5400WC-L	QTY 5400WC-R
1	A02359901	TUBE CORRUGATE TF	1	1	1	1
2	811998601	CLAMP COMPRESSOR	2	2	2	2
2A	A04326602	CLAMP COMPRESSOR SINGLE	2	2	2	2
3	140140888037	COMPRESSOR ACC HKK70VSD	1	1	1	1
4	140014525228	PCBA FLEX DRIVE 2.2 HKK70VSD	1	1	1	1
5	A03593404	POWER CORD INV AU/NZ FERITE	1	1	1	1
6	ES5332	DRIER	1	1	1	1
9	811978901	GROMMET COMPRESSOR	4	4	4	4
10	N.P.N.	BASE PLATE	1	1	1	1
11	A01262601	DRAIN PAN DYN CON	1	1	1	1
12	811998301	SHAFT ROLLER	2	2	2	2
13	811998202	ROLLER REAR	2	2	2	2
14	811949503	SCREW TRUSS 4.2X13	2	2	2	2
15	A01262501	DRAIN PAN SD	1	1	1	1
16	811976001	VALVE DRAIN ASSY BF	1	1	1	1
17	A15389002	JUMPER TUBE_HX ACC COMP 80W	1	1	1	1
18	808293603	TUBE PROCESS 100MM	1	1	1	1
19	N.P.N.	PIN MOUNT COMP (PART OF BASE)	2	2	2	2
N.I.	A10080806	HEATER TUBE DRAIN PAN SD LOK	1	1	1	1

DIAGRAMS

WIRING DIAGRAM



WARNING
 IT IS ILLEGAL FOR PERSONS OTHER THAN LICENSED ELECTRICAL MECHANICS OR PERSONS AUTHORISED BY LEGISLATION TO WORK ON THE FIXED WIRING OF ANY ELECTRICAL INSTALLATION. PENALTIES FOR CONVICTION ARE SEVERE.

IMPORTANT SAFETY NOTICE
 This diagram has been prepared for use by electrically qualified service technicians. Electrolux cannot be held responsible for the interpretation of its service publications nor for any injury or damage that may occur in connection with their use.

Publication Version Control Chart		
Issue Number	Reason	Date
1	Original Document RE1065	16-07-2019