



Electrolux

ELECTROLUX HOME PRODUCTS PTY LTD

ABN 51 004 762 341

Technical Publication N° RE1080

Issue: 3

Date: 02/20

PARTS & VIEWS

Electrolux

“C” Series Electronic All Fridge with Water



MODEL

PNC

ERE5047SC-R

92506082802

MAINTENANCE LEVEL CHANGE SUMMARY

ML	Description	Product Release Date
00	First Release	02/2019

MODEL NUMBER IDENTIFICATION

BRAND		TYPE		CONTROL		CAPACITY A		CAPACITY B (Refer Note 4)		FEATURE		DESIGN FEATURE		COLOUR		SERIES		DIVIDER	HAND		PLUG TYPE (COUNTRY)*	
CODE	BRAND	CODE	BUILD	CODE	BUILD	CODE	CAPACITY	CODE	CAPACITY	CODE	FEATURE	CODE	FEATURE	CODE	COLOR	CODE	SERIES		CODE	HAND	CODE	PLUG TYPE
A	AEG	B	BOTTOM FREEZER	E	DISPLAY ELECTRONIC	0	0-99 LITRES	0	= 0 LITRES	0	PLAIN	0	PLAIN	A	ARCTIC STEEL (SPB015)	A	NEW MODEL RANGE		R	RIGHT HAND	A	AUSTRALIAN STANDARD
C	CHEF	C	CHEST FREEZER	M	ELECTRO MECHANICAL (REVERS)	1	100-199 LITRES	1	= 10 LITRE	1	EXCLUSIVE MODEL POLAR HANDLE + INTERNAL IZ	1	BUILT IN/INTEGRATED	M	SLATE SILVER (SPB016)	B	FIRST SERIES CHANGE		L	LEFT HAND	B	BRITISH 3 PIN SQUARE
D	SISIL	F	UPLIGHT FREEZER	S	STANDARD ELECTRONIC	2	200-299 LITRES	2	= 20 LITRE	2	ICE MAKER ONLY	2	POCKET HANDLE	S	STAINLESS STEEL	C	SECOND SERIES CHANGE		X	NO HAND/REVERSIBLE	E	EUROPEAN 2 PIN
E	ELECTROLUX	H	FRENCH DOOR	B	BASIC ELECTRONIC	3	300-399 LITRES	3	= 30 LITRE	3	BAR ONLY	3	3 DOOR/VARIABLE TEMPERATURE COMPARTMENT	W	WHITE	D	ETC		D	DRAINER	S	SOUTH AFRICAN
F	FRIGIDAIR	R	ALL REFRIGERATOR			4	400-499 LITRES	4	= 40 LITRE	4	WATER DISPENSER ONLY	4	POLAR HANDLE	P	PACIFIC SILVER	E	ETC		N	SXS, NON HANDED	R	BRITISH 3 PIN ROUND
G	FRIGIDAIR GALLERY	S	SIDE X SIDE			5	500-599 LITRES	5	= 50 LITRE	5	LOCK	5	FLAT GLASS DOOR/ WINE COOLER	D	DYNAMIC SILVER	X	EXPORT ASIAN S/STEEL		C	DRAINER FULLY CONVERTIBLE (MID DRAWER FUNCTIONALITY)	7	THAI BLACK PLUG
H	WHITE WESTINGHOUSE	T	TOP FREEZER			6	600-699 LITRES	6	= 60 LITRE	6	ICE MAKER ONLY WITH WATER DISPENSER	6	CURVED GLASS DOOR	C	CHAMPAGNE	W	EXPORT ASIAN WHITE		V	DRAINER VARIABLE (MID DRAWER FUNCTIONALITY)	SA	SAUDI ARABIA 220V 60HZ
I	ELECTROLUX ICON	P	PANTRY			7	700-799 LITRES	7	= 70 LITRE	7	ICE & WATER DISPENSER	7	GLADIE-LINE (FLAT)	V	VCM 443	Z	RB00a TRIALS		F	DRAINER FREEZER (MID DRAWER FUNCTIONALITY)	PH	PHILIPPINES 220V 60HZ
K	ARTHUR MARTIN	D	QUATRO SXS			8	800-899 LITRES	8	= 80 LITRE	8	ICE & WATER & BAR	8	ASSIST HANDLE	B	BLACK/EBONY						IL	ISRAEL
P	PHILCO	M	MULTI DOOR			9	900 + LITRES	9	= 90 LITRE	9	ICE & WATER DISPENSER & INTERNET CONNECTIVITY	9	BUILT IN/INTEGRATED (FLAT)	X	BLACK STAINLESS						MY	MALAYSIA/SINGAPORE
R	ARTHUR MARTIN	W	WINE COOLER											G	GOLD					ID	INDONESIA	
S	SIMPSON	I	INTERNAL ICE BOX																	VN	VIETNAM	
U	REX ELECTROLUX																			TH	THAILAND	
W	WESTINGHOUSE																			AU	AUSTRALIA/INZ	
Z	ZANUSSI																			EU	EUROPE	
M	HIMART																			CN	CHINA	
																				SG	SINGAPORE	
																				JP	JAPAN	
																				IN	INDIA	
																				ZA	SOUTH AFRICA	
																				CL	CHILE	
																				AR	ARGENTINA	
																				MX	MEXICO	
																				BR	BRAZIL 220V	
																				BZ	BRAZIL 127V	
																				NA	NORTH AMERICA	
																				PU	PANAMA, URUGUAY, BOLIVIA	
																				CA	CANADA, CARIBBEAN 220V	
																				CC	CANADA, CARIBBEAN 127V	
																				AE	GCC GROUP	
																				SK	SOUTH KOREA	

NOTE: THIS LETTER ONLY FOR EXPORT DOMESTIC PRODUCT IS BLANK

CONTENTS

MAINTENANCE LEVEL CHANGE SUMMARY	2
MODEL NUMBER IDENTIFICATION.....	2

EXPLODED VIEWS & PARTS LISTS

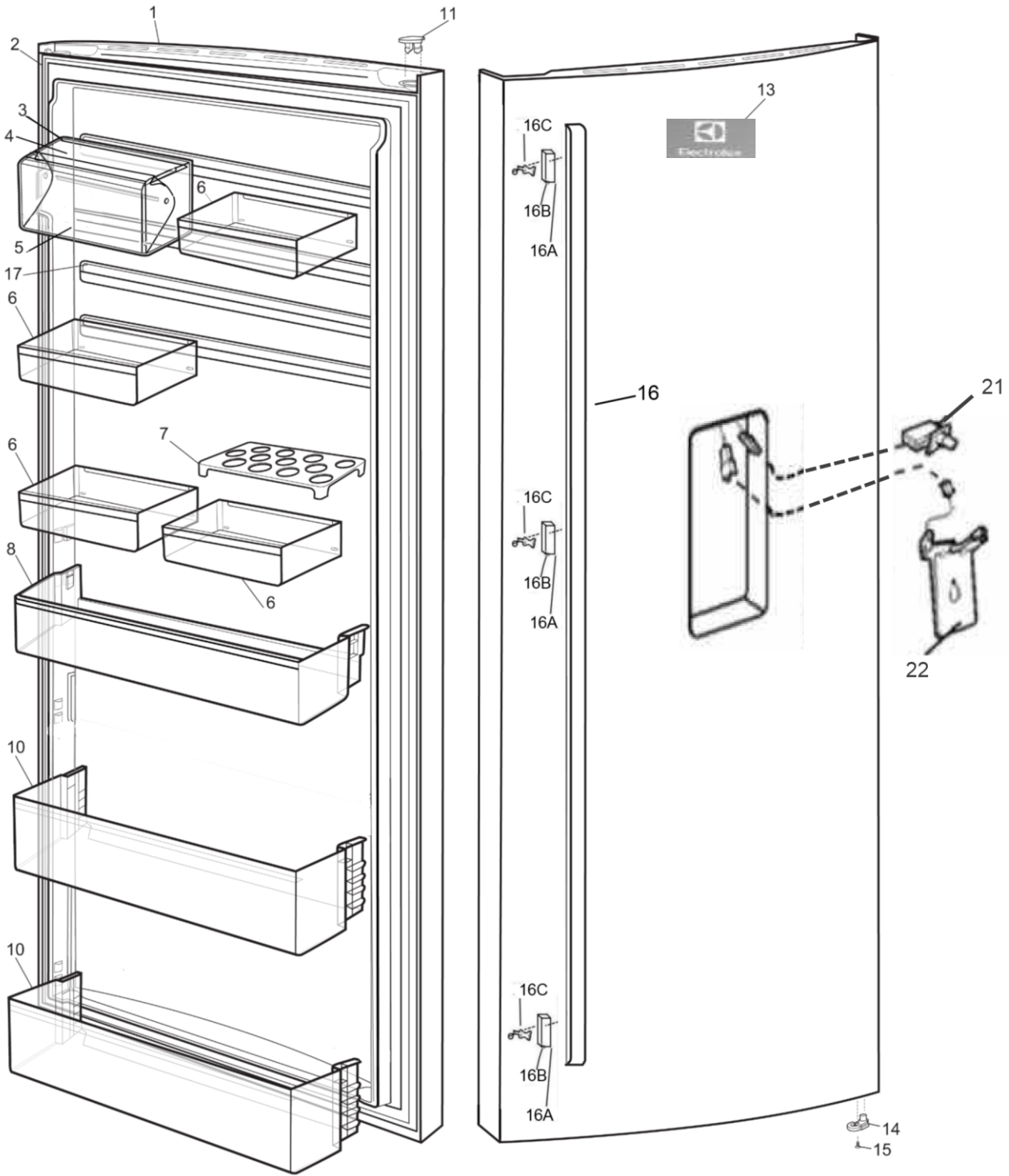
MODEL: ERE5047SC-R	4
DOOR	4
MODEL: ERE5047SC-R	7
CABINET	7
MODEL: ERE5047SC-R	9
EVAPORATOR / DUCT	9
MODEL: ERE5047SC-R	11
COMPRESSOR	11
MODEL: ERE5047SC-R	12
CRISPER PARTS BREAKDOWN	12
MODEL: ERE5047SC-R	13
CRISPER PARTS BREAKDOWN	13

NOTE: In Parts Listings

N.I.	=	Not Illustrated
N.P.A.	=	No Part Available
N.P.N.	=	Not Used on this Model

MODEL: ERE5047SC-R

DOOR



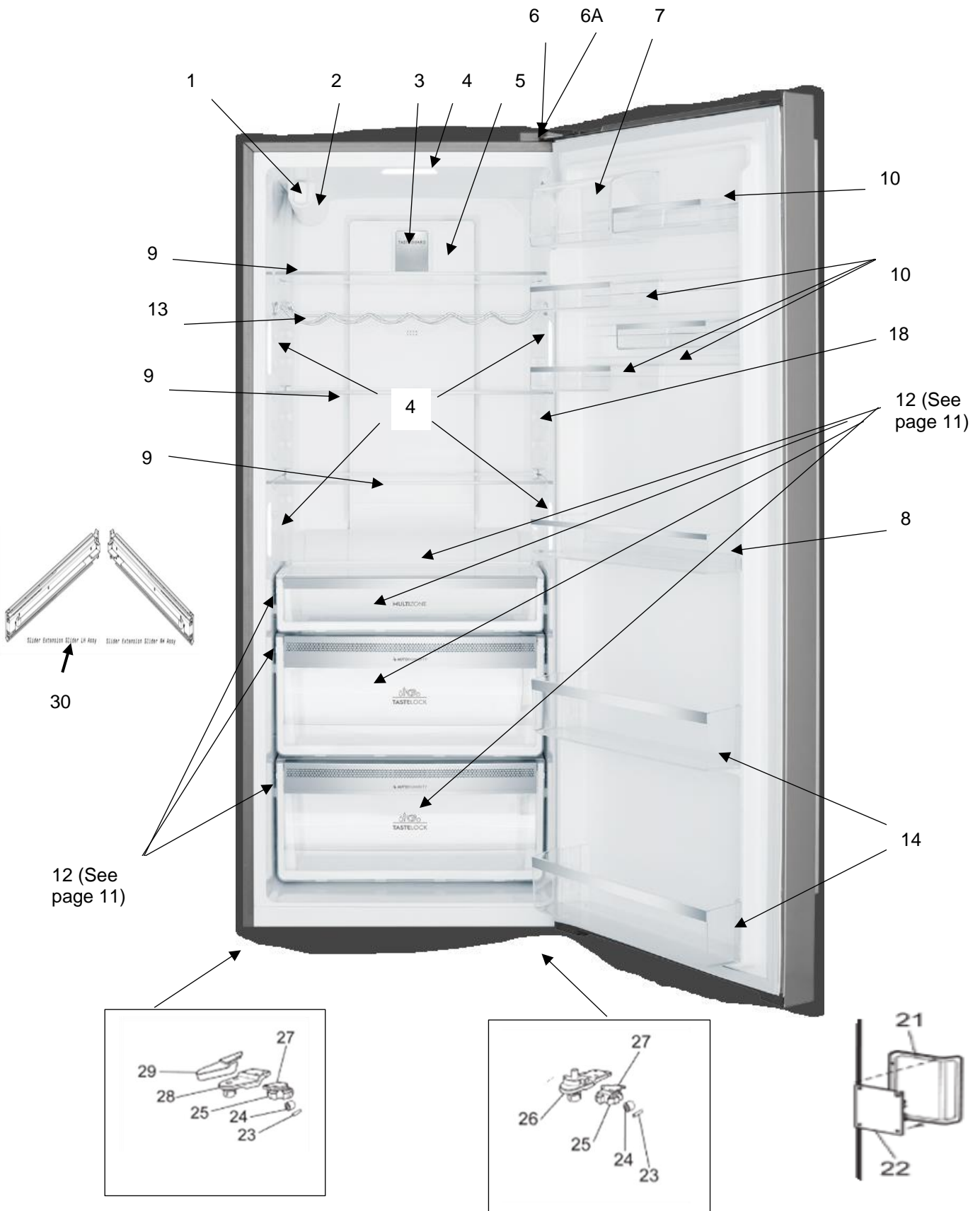
ITEM	PART NO.	DESCRIPTION	QTY
1	A16287078	DOOR SPARE FC	1
2	811988551	GASKET SD 70	1
*3	A00802901	BIN DOOR DAIRY BODY TF70 EL	1
*4	A00803201	BIN DOOR DAIRY UP LID TF70 EL	1
*5	A00803001	BIN DOOR DAIRY LOW LID TF70 EL	1
6	A00804206	BIN DOOR FLEX 70-1 HOTFOIL	4
7	A00807801	TRAY EGG 70W	1
8	A00804702	BIN DOOR FC SHAL MD80	1
10	A00805304	BIN DOOR FC BOTTLE MD	2
13	A03065703	BADGE ELECTROLUX ELECTRO FORMED.	1
14	A01046502	BEARING AUTO CLOSER R TF SL	1
15	808337901	SCREW PF AB 3.5X1.27X19	1
16	A12735010	HANDLE BODY SD SS	1
16A	A13428302	PEDESTAL HANDLE PACKED E100 SS (KIT)	1
16B	Refer 16A	GRUB SCREW (Part of 16A)	3
16C	A04818901	SCREW MOUNTING HANDLE MD36	3
17	811986810	RAIL DOOR SUPPORT 70W WHT	4
21	1457228	SWITCH (WATER DISPENSER)	1
22	1459214	ACTUATOR WATER	1
N.I.	A02870301	MAT DOOR BIN BOTTLE TF70 (Optional Accessory)	1
N.I.	A02870101	MAT DOOR BIN FLEX 1/2 TF70 (Optional Accessory)	1
Note *	A02551601	BIN DAIRY FOLDABLE DR 70EL ASY (COMPLETE) CAN BE USED TO REPLACE ITEMS 3,4,5,	1

MODEL: ERE5047SC-R

WATER SYSTEM PARTS

NUM	ANC	PART DESCRIPTION	QTY
	A03158101	TUBE DOOR OVERMOLD INSERT	1
	A02609201	BRACKET MAINFOLD	1
	807931803	CONNECTOR FILTER MAINFLOD	1
	A02477401	VALVE INLET 2-WAY	1
	A05670902	CONNECTOR QUICK5/16 PPM220808	2
	A03192801	GROMMET REAR TUBE	1
	A06178201	SEAL FOAM CONDUIT CYCLE	1
	A05044201	SEAL FOAM I&W COVER	1
	A01983802	COVER VALVE REAR PANEL	1
	240396803	CLAMP CABLE 5/16'	4
	242200102	TUBE 90 DEGREE ELBOW	1
	A05541601	SINGLE VALVE ASSEMMLY	1
	A02607201	VALVE INLET 1 WAY	1
	A05541401	SCREW M3.5X6	2
	A02904501	COVER BODY SINGLE VALVE	1
	A02904502	COVER LID SINGLE VALVE	1
	A06376001	CONNECTORCHECK VAL 5/16'- 1/4'	1
	A06378101	COVER WATER TANK SD ASSY	1
	A02609301	COVER SCREW SNAPED	1
	807946705	FILTER ASSEMBLY (PINOT)	1

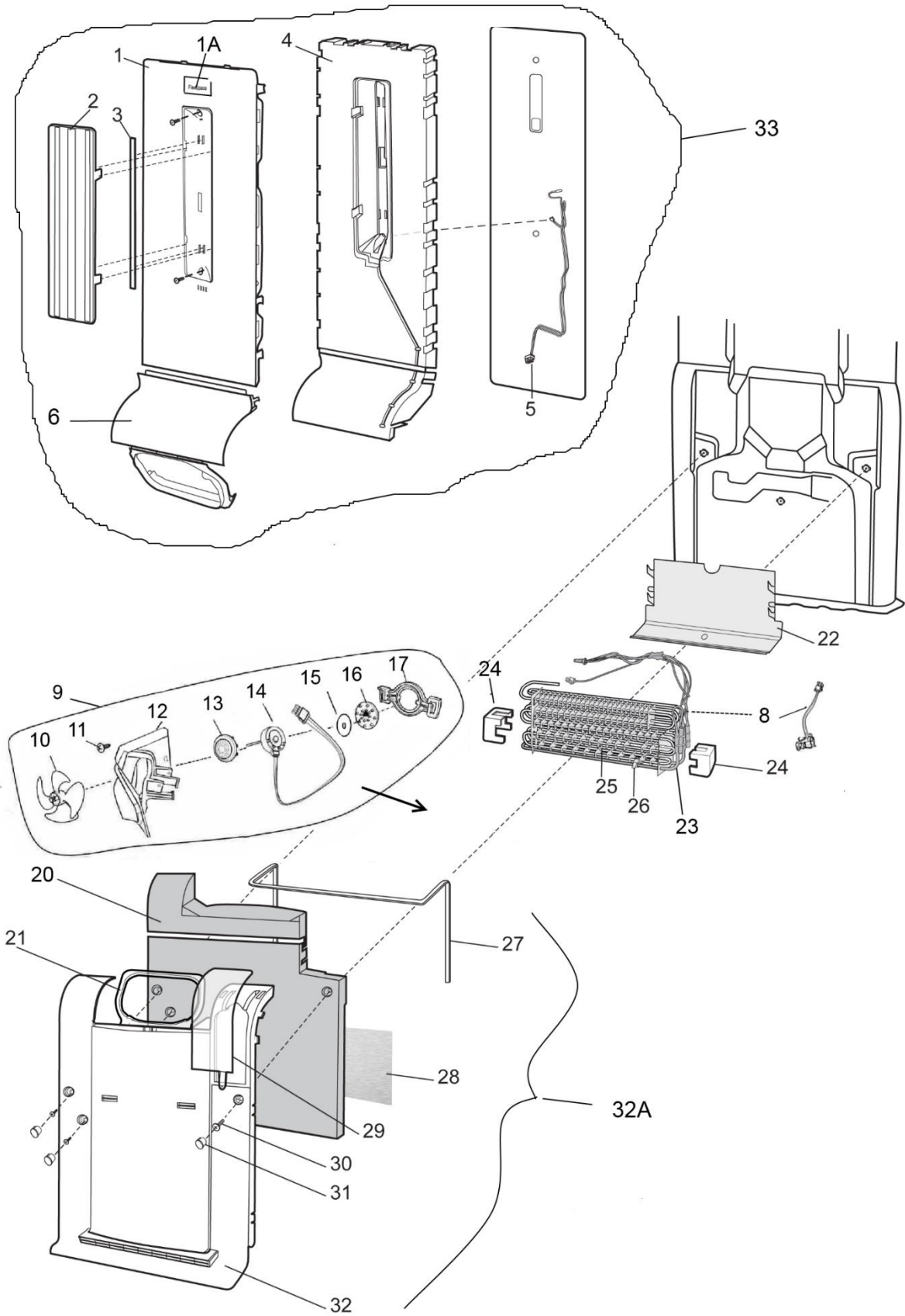
MODEL: ERE5047SC-R
CABINET



ITEM	PART NO.	DESCRIPTION	QTY
1	807946705	FILTER ASSEMBLY (PINOT)	1
2	807931803	CONNECTOR FILTER MAINFLOD	1
3	A00685609	COVER DEO BAFFLE SILVER-ART TG	1
NI	807305302	DEODORIZER BLOCK THIN	1
4	A08828001	LENS 3 LEDS CLUSTER GALAGA	5
4	242196209	PCBA 3LEDS CLUSTER GALAGA	5
5	SEE PAGES 8-9	COVER MFLOW UPPER BF1725 ELUX	1
6	A00354401	HINGE TOP RIGHT	1
6A	A01145504	COVER TOP HINGE IW RH WHT	1
7	A02551601	BIN DAIRY FOLDABLE DR (COMPLETE)	1
8	A00804702	BIN DOOR FC SHAL MD80	1
9	A00822405	SHELF FC TF70 EAU ASSY	3
10	A00804206	BIN DOOR FLEX 70-1 HOTFOIL	4
11	A02677303	DELI COVER SD70W ELUX ASSY	1
12	See page 12	COMPLETE BREAK DOWN ON PAGE 12	1
13	A01774801	BOTTLE RACK 70	
14	A00805304	BIN DOOR FC BOTTLE MD	2
17	A00354401	HINGE TOP RIGHT	1
18	A02282401	PCBA_UI ASSY I&W ELUX INL	1
	A04066804	DISPLAY UI SDAR ELUX INTL ASSY	1
21	A01277301	HOUSING REAR PCB COVER	1
22	A01028812	PCBA MAIN ERF2003 15W FCT	1
23	A01808801	AXIS ROLLER	2
24	A01819201	ROLLER FOOT	2
25	A01819302	FOOT LEVER	2
26	A01819909	HINGE BASE R BIC ASSY	1
27	A01819101	FOOT BASE THREAD	2
28	A02102703	FOOT BASE BF	1
29	A01817903	A01817903	1
30	A01054403	EXTENSION SLIDE ASSY LH 250MM	3
	A01054404	EXTENSION SLIDE ASSY RH 250MM	3
N.I.	811949401	SCREW M5X16 (top hinge & bottom hinge)	5
N.I.	A00807801	TRAY EGG 70W	1
N.I.	A13016401	MEMBRANE TYVEK (crisper filter)	2
N.I.	A13016501	HOLDER MEMBRANE (crisper filter)	2
N.I.	A13016601	HOLDER MEMBRANE ASSY(crisper filter)	2

MODEL: ERE5047SC-R

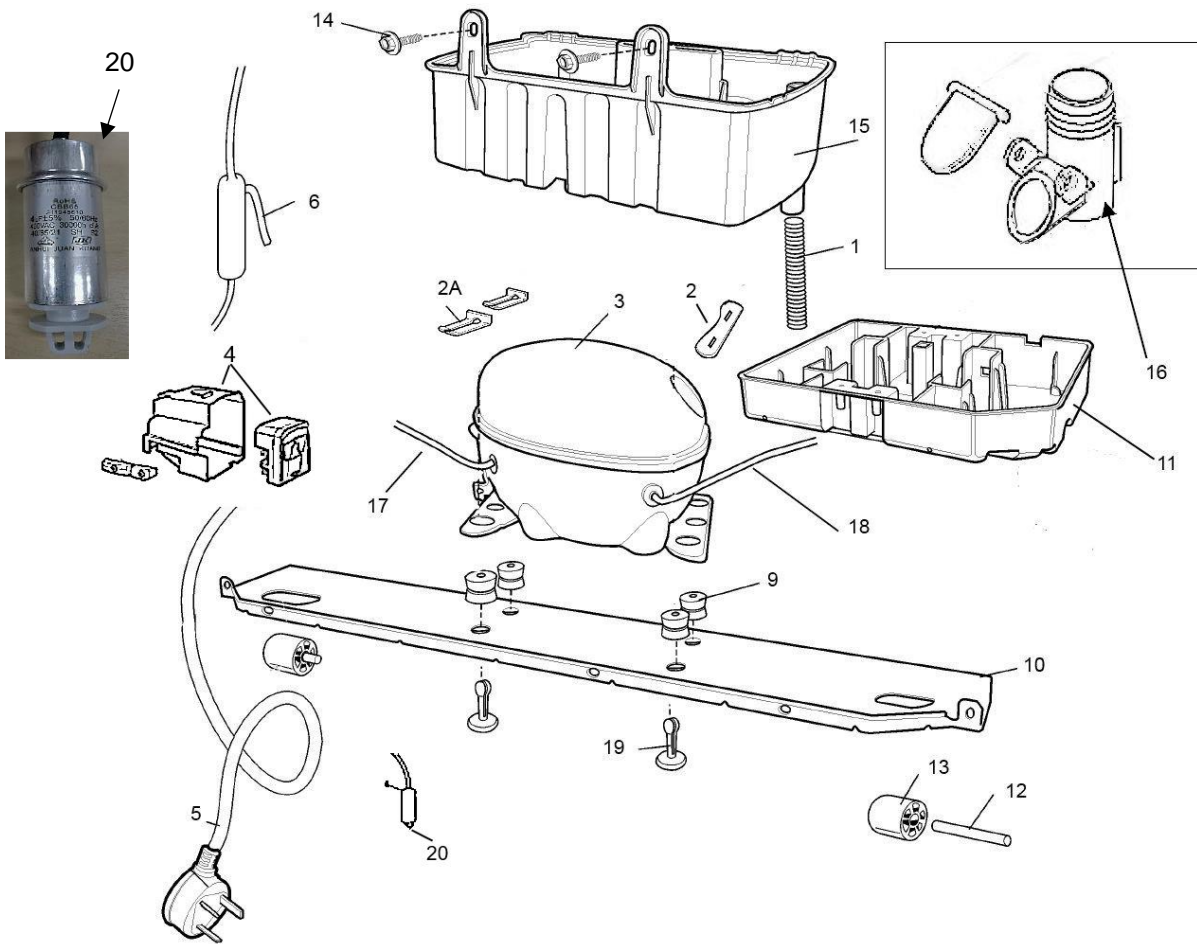
EVAPORATOR / DUCT



ITEM	PART NO.	DESCRIPTION	QTY
1	A00762701	COVER MFLOW UPPER BF1725	1
1A	A00685609	COVER DEO BAFFLE SILVER-ART	1
N.I.	807305302	DEODORIZER BLOCK THIN	1
4	A02149701	EPS MULTIFLOW SD	1
5	A01043503	HARNESS-ASSY M/FLOW TF	1
6	A02149101	COVER BOTTOM MULTIFLOW SD	1
8	A05206103	HARNESS-ASSY SENSOR DEF	1
9	A02454301	FAN SHROUD DC ASSY (Complete)	1
10	811699602	BLADE FAN,NAT	1
11	811949503	SCREW TRUSS 4.2X13	1
12	A02152001	BRACKET SUPPORT FAN MOUNT	1
13	811972801	GROMMET FAN SIDE	1
14	8090692081	MOTOR FAN PANASONIC DC 3W	1
15	1451297	WASHER SLINGER NYLON	
16	1446048	GROMMET, FAN PANA DC FAN	1
17	A02164801	RETAINER CLIP	1
20	A02149901	DUCT EPS EVAP BOTTOM ALL SD	1
	A02149801	DUCT EPS EVAP TOP ALL SD	1
21	N.P.N.	TAPE EDPM	1
22	A01097401	TRAY EVAP DRAIN BM/SD 70W	1
8	A05206103	SENSOR HARNESS-ASSY DEF	1
23	A01058204	HEATER RAD DEF R600 BF70W	1
24	A02249601	SUPPORT EVAPORATOR BF	2
25	A04063201	EVAPORATOR FF BF70	1
26	811980402	CLAMP NTC EVAPORATOR	1
27	811950601	SEAL FOAM 6X8	1
28	811942501	TAPE ALUMINUM 36MM	1
29	A02456601	COVER EVAPORATOR LID SD 70	1
30	811949503	SCREW TRUSS 4.2X13	4
31	811971601	COVER SCREW	3
32	A02054901	COVER EVAPORATOR SD RF 70	1
32A	A02456201	COVER EVAPORATOR ASSY SD RF	1
33	A02457703	MULTIFLOW ASY SD RF ELUX	1

MODEL: ERE5047SC-R

COMPRESSOR



ITEM	PART No.	PART DESCRIPTION	QTY
1	A02359903	TUBE CORRUGATE	2
2	811998601	CLAMP COMPRESSOR	1
2A	A04326602	CLAMP COMPRESSOR SINGLE	2
3	A02661201	COMPRESSOR WANBAO EYD40	1
4	N/A	ELECTRICS (PART OF COMPRESSOR)	1
5	A03593401	POWER CORD	1
6	ES5332	DRIER	1
9	811978901	GROMMET, COMPRESSOR	4
10	807822704	BASE PLATE (INCL. ROLLERS – items 12 & 13)	1
11	A01262601	DRAIN PAN DYN CON	1
12	A01808801	AXLE, ROLLER (Part of item 10)	1
13	A01819201	ROLLER FOOT (Part of item 10)	1
14	811949503	SCREW TRUSS 4.2X13	2
15	A01262501	DRAIN PAN SD	1
16	811976001	VALVE DRAIN ASSY BF	1
17	A04339605	TUBE JUMPER	1
18	808293603	TUBE PROCESS	1
19	N.P.N.	PIN MOUNT COMP (Part of Base)	2
20	A13962405	CAPACITOR RF 4UF-6.3m	2
21			
N.I.	A03637801	SPACER 3 TURN HEATER	2
N.I.	A10080806	HEATER TUBE DRAIN PAN LK	1

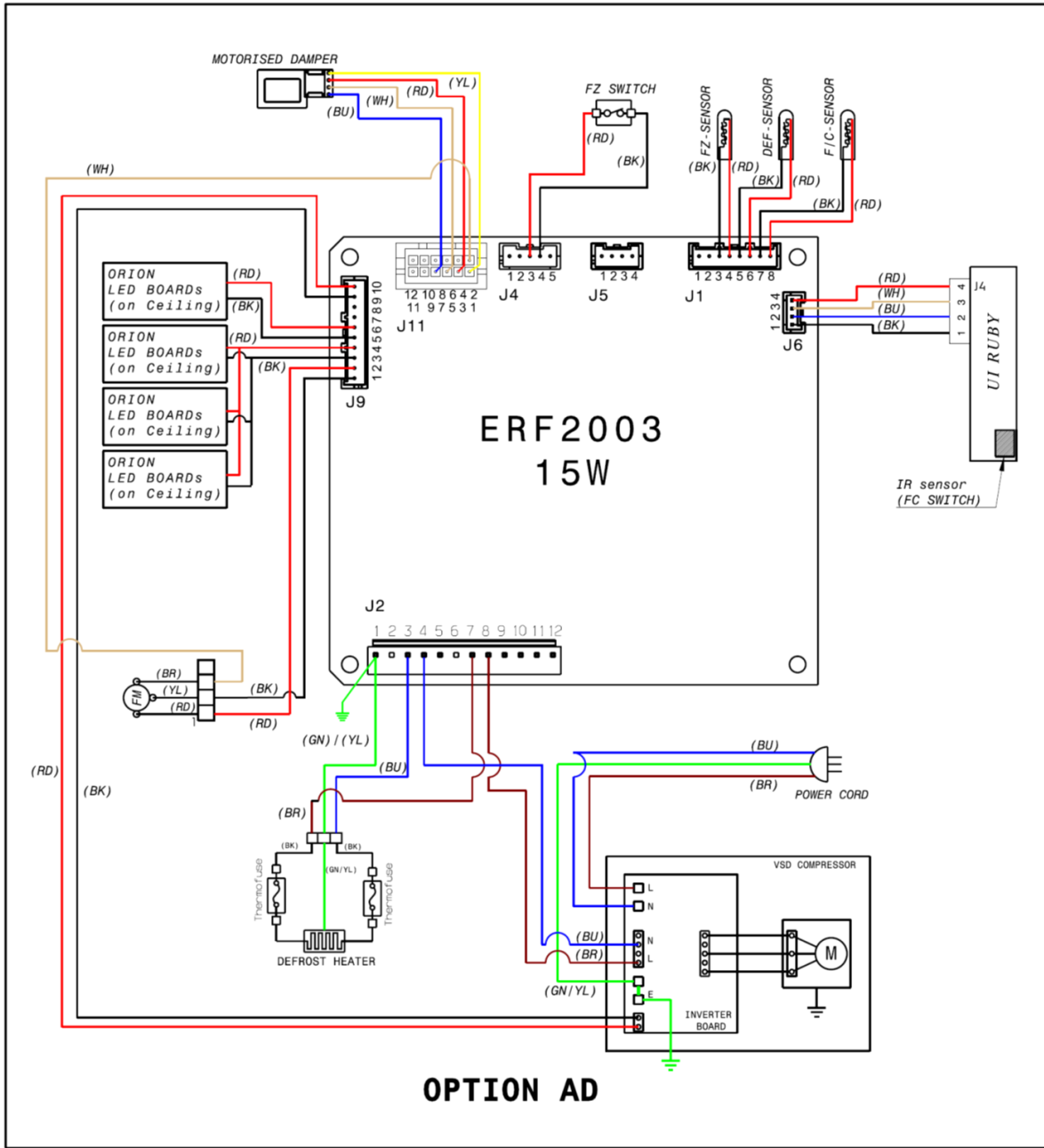
MODEL: ERE5047SC-R

CRISPER PARTS BREAKDOWN

(Refer item 12 on pages 6 & 7)

CRISPER/CHILLER PARTS				
	PART No.	DESCRIPTION	QTY	NOTES
	A02677303	DELI COVER SD70W ELUX ASSY	1	Includes 2,3,4,5,6,7
2	A02677102	DRAWER CRISPER COVER SD 70W	1	Available separately
3	A01493203	DRAWER CRISER SLIDE TELE RH	1	Available separately
4	A01493204	DRAWER CRISER SLIDE TELE LH	1	Available separately
5	A01054403	EXTENSION SLIDE ASSY LH 250MM	1	Available separately
6	A01054404	EXTENSION SLIDE ASSY RH 250MM	1	Available separately
7	A02644401	CRISPER GASKET 70	1	Available separately
	A03340801	DRAWER DELI SD ASY ELUX	1	Includes 24,25,26,27,28,29
24	A03340901	DRAWER DELI REAR ASSY SD70	1	Available separately
25	A02683401	DRAWER DELI BODY SD70	1	Available separately
26	A03341001	DRAWER DELI GLASS SD70	1	Available separately
27	A02383904	DRAWER DELI FRONT 70 EAU ASSY	1	Available separately
28	A02383804	DRAWER DELI FRONT 70 EAU-ART	1	Available separately
29	A02376201	DRWR HNDL TF70 E-HOTFOIL	1	Not Available Separately
	A02677302	COVER CRISPER SD70W ELUX ASSY	2	Includes 9,10,11,12,13,14,
9	A02677102	DRAWER CRISPER COVER SD 70W	2	Available separately
10	A01493203	DRAWER CRISER SLIDE TELE RH	2	Available separately
11	A01493204	DRAWER CRISER SLIDE TELE LH	2	Available separately
12	A01054403	EXTENSION SLIDE ASSY LH 250MM	2	Available separately
13	A01054404	EXTENSION SLIDE ASSY RH 250MM	2	Available separately
14	A02644401	CRISPER GASKET 70	2	Available separately
15	A02992103	DOUBLE WALL COVER TF70	2	Not Available Separately
	A00825718	DRAWER CRISPER TF70 AHC ASSY	2	Includes 17,18,19,20
17	A00825302	DRAWER CRISPER BODY TF70 AOF	2	Available separately
18	A13016903	DRAWER CRISPER FR TF70 AHC ASY	2	Not Available Separately
19	A13023003	DRAWER CRISPER FR TF70 AHC ART	2	Not Available Separately
20	A13016703	CRISPER HANDLE 70W E100 ART	2	Not Available Separately
	A13016601	HOLDER MEMBRANE AHC ASSY	2	Includes 22, 23
22	A13016401	MEMBRANE TYVEK	2	Available separately
23	A13016501	HOLDER MEMBRANE TYVEK	2	Available separately

MODEL: ERE5047SC-R
CRISPER PARTS BREAKDOWN



OPTION AD

WARNING
 IT IS ILLEGAL FOR PERSONS OTHER THAN LICENSED ELECTRICAL MECHANICS OR PERSONS AUTHORISED BY LEGISLATION TO WORK ON THE FIXED WIRING OF ANY ELECTRICAL INSTALLATION. PENALTIES FOR CONVICTION ARE SEVERE.

IMPORTANT SAFETY NOTICE
 This diagram has been prepared for use by electrically qualified service technicians. Electrolux cannot be held responsible for the interpretation of its service publications nor for any injury or damage that may occur in connection with their use.

Publication Version Control Chart		
Issue No.	Reason	Date
1	Initial Issue (as Complete Parts List only).	18-04-2019
2	Updates incorporating drawings. Document converted to new format.	28-08-2019

