



Electrolux

ELECTROLUX HOME PRODUCTS PTY LTD

ABN 51 004 762 341

Technical Publication N° RE1089

Issue: 1

Date: 09/2021

Electrolux

***“C” Series Electronic
Auto Ice Maker
All Freezer***



MODEL

PNC

EFE4227SC-L

92506082902

MAINTENANCE LEVEL CHANGE SUMMARY

ML	Description	Product Release Date
00	First Release	03/2019

MODEL NUMBER IDENTIFICATION

BRAND		TYPE		CONTROL		CAPACITY A		CAPACITY B (Refer Note 4)		FEATURE		DESIGN FEATURE		COLOUR		SERIES		DIVIDER	HAND		PLUG TYPE (COUNTRY)*	
CODE	BRAND	CODE	BUILD	CODE	BUILD	CODE	CAPACITY	CODE	CAPACITY	CODE	FEATURE	CODE	FEATURE	CODE	COLOR	CODE	SERIES		CODE	HAND	CODE	PLUG TYPE
A	AEG	B	BOTTOM FREEZER	E	DISPLAY ELECTRONIC	0	0-99 LITRES	0	= 0 LITRES	0	PLAIN	0	PLAIN	A	ARCTIC STEEL (SPB015)	A	NEW MODEL RANGE		R	RIGHT HAND	A	AUSTRALIAN STANDARD
C	CHEF	C	CHEST FREEZER	M	ELECTRO MECHANICAL (REVERS)	1	100-199 LITRES	1	= 10 LITRE	1	EXCLUSIVE MODEL POLAR HANDLE + INTERNAL IZ	1	BUILT IN/INTEGRATED	M	SLATE SILVER (SPB016)	B	FIRST SERIES CHANGE		L	LEFT HAND	B	BRITISH 3 PIN SQUARE
D	SISIL	F	UPLIGHT FREEZER	S	STANDARD ELECTRONIC	2	200-299 LITRES	2	= 20 LITRE	2	ICE MAKER ONLY	2	POCKET HANDLE	S	STAINLESS STEEL	C	SECOND SERIES CHANGE		X	NO HAND/REVERSIBLE	E	EUROPEAN 2 PIN
E	ELECTROLUX	H	FRENCH DOOR	B	BASIC ELECTRONIC	3	300-399 LITRES	3	= 30 LITRE	3	BAR ONLY	3	3 DOOR/VARIABLE TEMPERATURE COMPARTMENT	W	WHITE	D	ETC		D	DRAINER	S	SOUTH AFRICAN
F	FRIGIDAIR	R	ALL REFRIGERATOR			4	400-499 LITRES	4	= 40 LITRE	4	WATER DISPENSER ONLY	4	POLAR HANDLE	P	PACIFIC SILVER	E	ETC		N	SXS, NON HANDED	R	BRITISH 3 PIN ROUND
G	FRIGIDAIR GALLERY	S	SIDE X SIDE			5	500-599 LITRES	5	= 50 LITRE	5	LOCK	5	FLAT GLASS DOOR/ WINE COOLER	D	DYNAMIC SILVER	X	EXPORT ASIAN S/STEEL		C	DRAINER FULLY CONVERTIBLE (MID DRAWER FUNCTIONALITY)	7	THAI BLACK PLUG
H	WHITE WESTINGHOUSE	T	TOP FREEZER			6	600-699 LITRES	6	= 60 LITRE	6	ICE MAKER ONLY WITH WATER DISPENSER	6	CURVED GLASS DOOR	C	CHAMPAGNE	W	EXPORT ASIAN WHITE		V	DRAINER VARIABLE (MID DRAWER FUNCTIONALITY)	SA	SAUDI ARABIA 220V 60HZ
I	ELECTROLUX ICON	P	PANTRY			7	700-799 LITRES	7	= 70 LITRE	7	ICE & WATER DISPENSER	7	GLADIE-LINE (FLAT)	V	VCM 443	Z	R800a TRIALS		F	DRAINER FREEZER (MID DRAWER FUNCTIONALITY)	PH	PHILIPPINES 220V 60HZ
K	ARTHUR MARTIN	D	QUATRO SXS			8	800-899 LITRES	8	= 80 LITRE	8	ICE & WATER & BAR	8	ASSIST HANDLE	B	BLACK/EBONY						IL	ISRAEL
P	PHILCO	M	MULTI DOOR			9	900 + LITRES	9	= 90 LITRE	9	ICE & WATER DISPENSER & INTERNET CONNECTIVITY	9	BUILT IN/INTEGRATED (FLAT)	X	BLACK STAINLESS						MY	MALAYSIA/SINGAPORE
R	ARTHUR MARTIN	W	WINE COOLER											G	GOLD					ID	INDONESIA	
S	SIMPSON	I	INTERNAL ICE BOX																	VN	VIETNAM	
U	REX ELECTROLUX																			TH	THAILAND	
W	WESTINGHOUSE																			AU	AUSTRALIA/INZ	
Z	ZANUSSI																			EU	EUROPE	
M	HIMART																			CN	CHINA	
																				SG	SINGAPORE	
																				JP	JAPAN	
																				IN	INDIA	
																				ZA	SOUTH AFRICA	
																				CL	CHILE	
																				AR	ARGENTINA	
																				MX	MEXICO	
																				BR	BRAZIL 220V	
																				BZ	BRAZIL 127V	
																				NA	NORTH AMERICA	
																				PU	PARAGUAY, URUGUAY, BOLIVIA	
																				CA	CANADA, CARIBBEAN 220V	
																				CC	CANADA, CARIBBEAN 127V	
																				AE	GCC GROUP	
																				SK	SOUTH KOREA	

NOTE: THIS LETTER ONLY FOR EXPORT DOMESTIC PRODUCT IS BLANK

SAFETY INFORMATION

Under NO circumstances should any service work be carried out unless you are qualified and licensed as per Federal, State and Territory requirements.

General Safety

- Work should not be under taken on any electrical appliance without first checking the earthing integrity of the appliance and electrical supply.
- A safety audit should be carried out of the work area to ensure the area has adequate room to work in and is free from any hazards that may cause any injury to yourself and any other person in the vicinity.
- After repair, product has to be reassembled as it was which complies with specification of the Manufacturer to ensure product is safe to operate both mechanically and electrically.

Electrical Safety

- Under NO circumstances should changing or repairs to parts be carried out on live appliances. Any changing or repair to parts must be done with the appliance removed from the electrical supply. Failure to do so may result is injury or death.
- After any work is completed the earthing integrity of the appliance must be checked.
- If you need to do electrical testing with the product live the following must be observed:
 - It must be on a circuit with earth leakage protection.
 - As much skin as possible should be covered to reduce the chances of coming into contact with live terminals
 - All jewellery should be removed.
 - There should not be any water/moisture on the ground.
 - A safety sign should be displayed to warn others of the danger.

Running appliances with panels/covers removed

- All the electrical safety procedures above must be observed.
- Care must be taken not to come into contact with moving parts.
- Loose clothing or jewellery that can become entrapped should not be worn.
- If handling or working near sharp edges the appropriate personal protection equipment must be used.
- Safety eyewear should be used if removing parts that may “spring and fly” if they slip of a tool. Eg removing a spring which is under compression.
- Any removed panels that have sharp edges should be placed where they do not cause any danger of injury to yourself or others.
- A safety sign should be displayed to warn others of the danger.
- If handling or working in a dusty area or with Dust Product, dust mask or appropriate PPE should be used.

Refrigeration

- Ensure you know which refrigerant is in the appliance so the correct gas handling procedures can be used. Failure to use the correct procedure may result in injury.
- If hot work needs to be done ensure all the surround area is safe and free from combustibles. Where necessary heat shielding should be used.
- Ensure pipework has cooled down before touching.
- When handling gas make sure all necessary PPE is used.
- Ensure there is enough ventilation.
- Place warnings signs so others know flames/smoking must not be in the area.

Gas Safety

- Under no circumstances should a naked flame be used, eg match, lighter etc, to try and find a gas leak, only an appropriate gas leak detector or soapy water should be used.
- When converting an appliance to another gas type, the gas type label supplied must be fitted in the appropriate area.
- Always ensure the product is connected to the right gas type.
- When working with a gas leak place warnings signs so others know flames/smoking must not be in the area.
- After fixing a gas leak do not try and ignite the burner(s) until any remaining escaped gas has dissipated.

TOOLS

- Philips head screw driver
- 10 mm socket drive
- 8 mm socket drive
- Multi Meter capable of earthing integrity checks
- Earthing strap
- Data Loggers
- Longnose pliers
- R600A Gauges & hoses
- Suction cap
- Inspection mirror
- Solder & Flux
- Vacuum pump
- Map gas or other welding equipment
- Floor protection
- Safety gloves
- Safety glasses
- Water pressure gauge
- 2.5 mm Allen key

CONTENTS

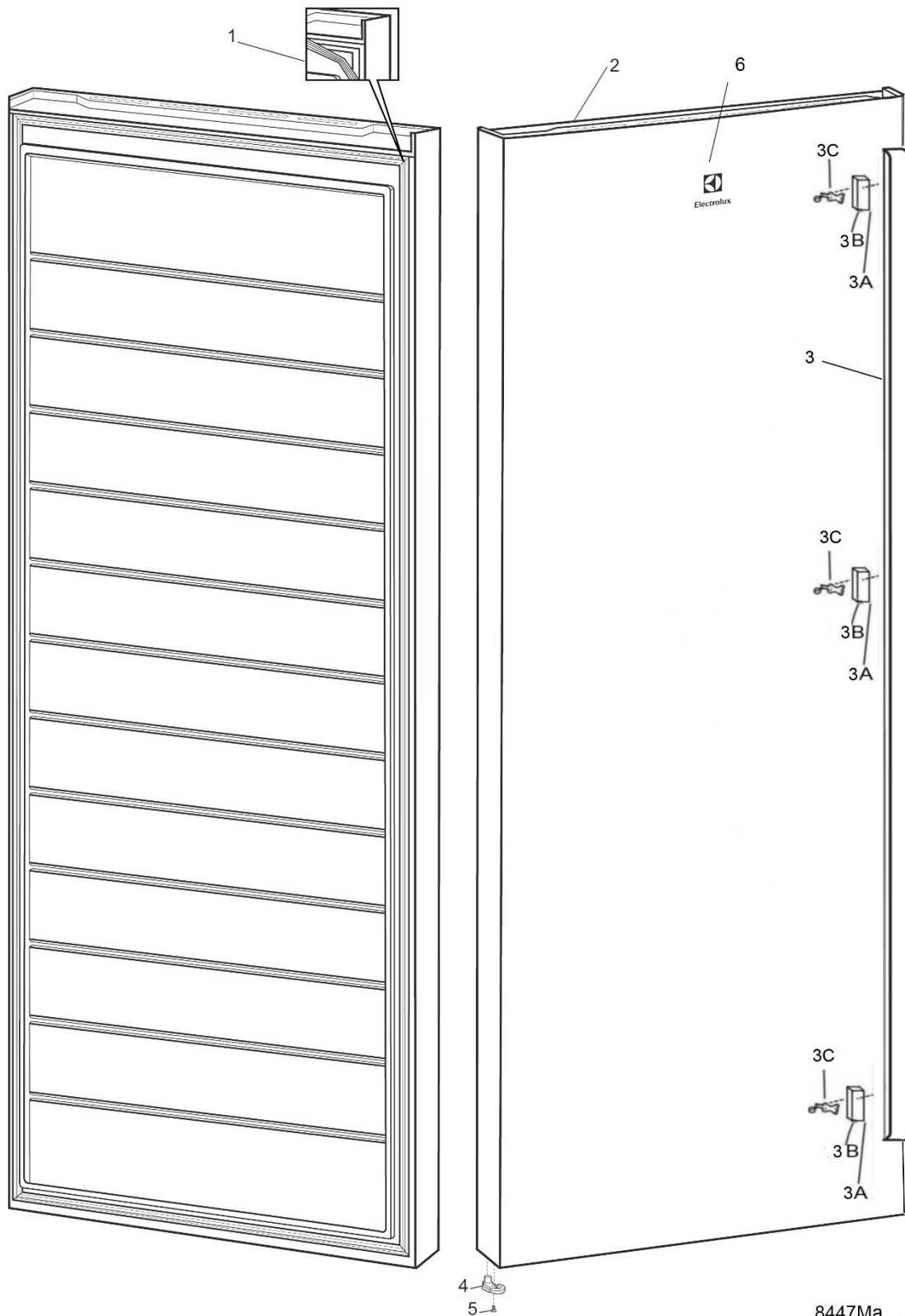
MAINTENANCE LEVEL CHANGE SUMMARY	2
MODEL NUMBER IDENTIFICATION.....	2
SAFETY INFORMATION	3
TOOLS.....	5
EXPLODED VIEWS & PARTS LISTS.....	7
MODEL: EFE4227SC-L.....	7
DOOR.....	7
MODEL: EFE4227SC-L.....	9
CABINET	9
MODEL: EFE4227SC-L.....	11
COMPRESSOR.....	11
MODEL: EFE4227SC-L.....	13
EVAPORATOR / DUCT.....	13

EXPLODED VIEWS & PARTS LISTS

MODEL: EFE4227SC-L

DOOR

Ex 8447Ma



8447Ma

ITEM	PART NO.	DESCRIPTION Ex 8447Ma	QTY
1	811988551	GASKET SD 70	1
2	A16287079	DOOR SPARE FZR	1
	A01069002	BEARING HINGE FZR TOP CLOSED	1
3	A12735010	HANDLE BODY SD SS	1
3A	A13428302	HANDLE PEDESTAL PACKED ASSY E100 SS	1
3B	Refer 3A	GRUB SCREW (Part of 3A)	-
3C	A04818901	SCREW MOUNTING HANDLE MD36	3
4	A01046504	BEARING AUTO CLOSER L TF SL	1
5	808337901	SCREW PF AB 3.5X1.27X19	1
6	A03065703	BADGE ELECTROLUX ELECTRO FORMED	1

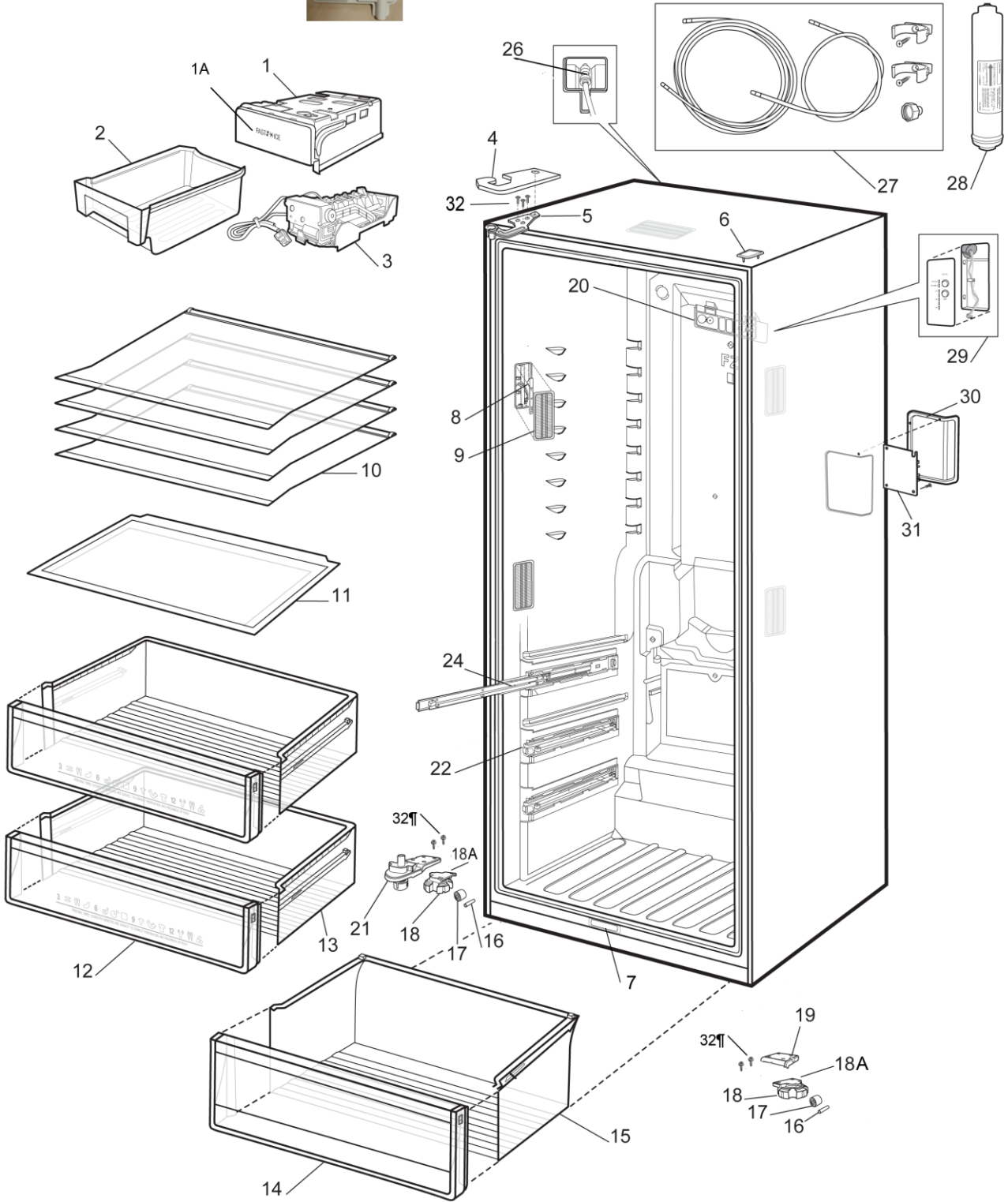
MODEL: EFE4227SC-L

CABINET



33

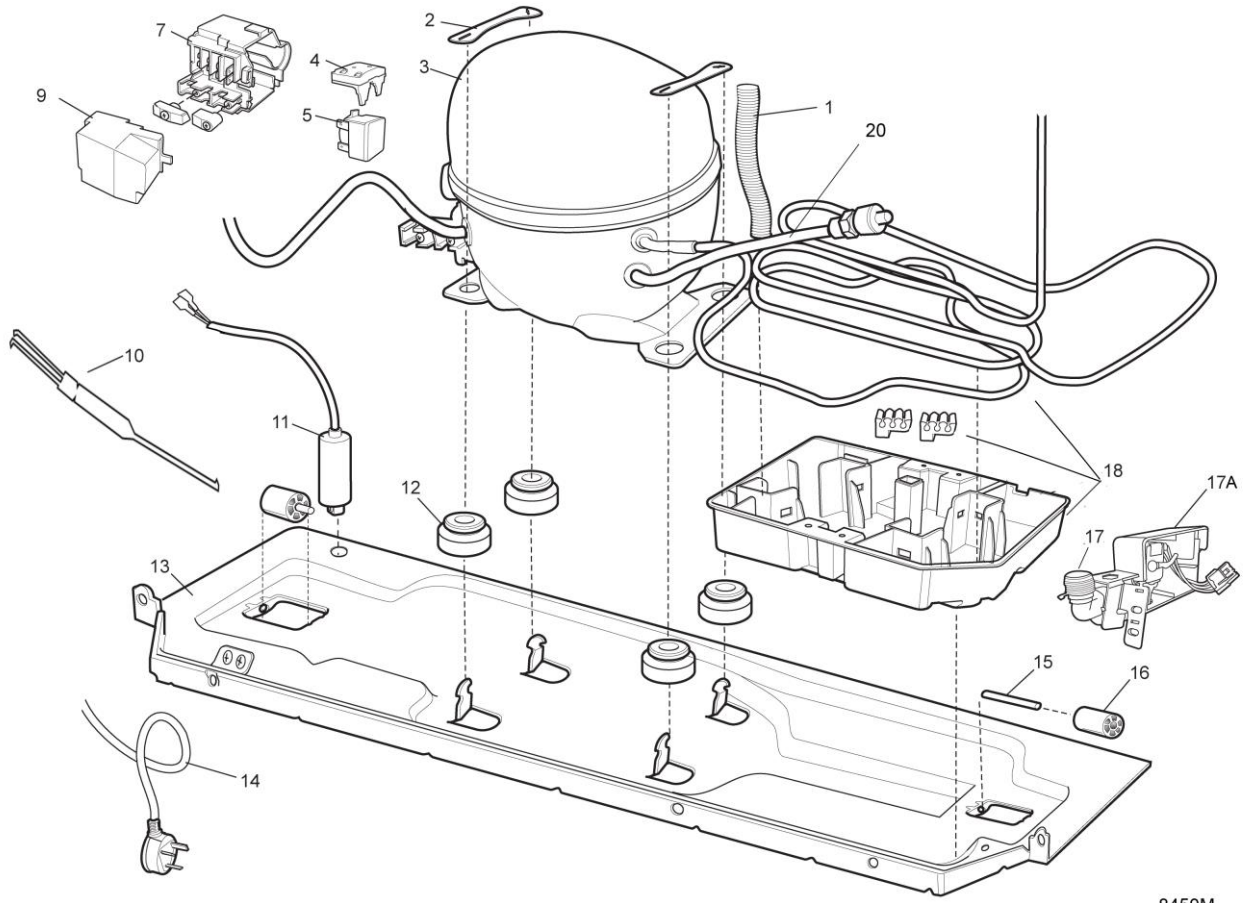
Ex 8448M



ITEM	PART NO.	DESCRIPTION Ex 8448M	QTY
1	A02591101	ICE MAKER BRACKET	1
1A	A01959502	ICEMAKER COVER ELUX ARTWORK	1
2	A02398901	DRAWER ICE	1
3	243297606	ICE MAKER (SANKYO)	1
4	A00828101	COVER TOP HINGE LEFT GR	1
5	A00354402	HINGE TOP LEFT	1
6	811996401	COVER TOP CABINET WH GR	1
7	811943601	SWITCH DOOR	1
8	242196207	PCBA 3 LEDS CLUSTER GALAGA	4
9	242202701	LENS 3 LEDS CLUSTER GALAGA	4
10	A02153801	SHELF ASSY ELUX FZ SD 70W	4
11	A02153301	SHELF SHORT SD FZ 70W	1
12+13	A02793507	DRAWER FZR FR MID ASY 70 EAU	2
13	A00354101	DRAWER MIDDLE BODY BF70	2
14+15	A02793501	DRAWER FZR FR LWR ASY 70 ELUX	1
15	A01051801	DRAWER LOWER BODY BF70	1
16	A01808801	AXIS ROLLER (SHAFT ROLLER FRONT)	2
17	A01819201	ROLLER FOOT	2
18	A01819302	FOOT LEVER	2
18A	A01819101	FOOT BASE THREAD	2
19	A02102701	FOOT BASE BF	1
20	A04297601	MULTIFLOW COVER SUPPORT	1
21	A01819902	HINGE BASE LEFT ASSY	1
22	A01381501	EXTENSION SLIDE INSERT FZR LH	3
22	A01381502	EXTENSION SLIDE INSERT FZR RH	3
24	A01054401	EXTENSION SLIDE ASSY LH 300MM	3
24	A01054402	EXTENSION SLIDE ASSY RH 300MM	3
26	A06375901	CONNECTOR 1/4"	1
27	A03209801	I&W INSTALLATION KIT SD FZ (INCLUDES ITEM 28)	1
28	1450970	WATER FILTER INLINE ELECTROLUX	1
29	A01401302	DISPLAY UI SDAF ELUX ASSY	1
30	A01277301	HOUSING REAR PCB COVER	1
31	A03002301	ERF2003 5LED FZ_S	1
32	A811949401	SCREW TRILOB M5x16	7
33	A01983802	COVER VALVE REAR PANEL	1
NI	A06375901	CONNECTORCHECK VAL 5/16" – 1/4"	1

MODEL: EFE4227SC-L
COMPRESSOR

Ex 8450M



OAEOM

ITEM	PART NO.	DESCRIPTION Ex 8450M	QTY
1	A02359901	TUBE CORRUGATE TF SD-FZ	1
2	811998601	CLAMP COMPRESSOR	2
3	A03343303	COMPRESSOR EMB66CLC	1
4	A04138501	STARTING DEVICE QPA-20A	1
5	A04138401	OVERLOAD PROTECTOR EMBRACO	1
7	A04138201	TERMINAL BLOCK EMBRACO	1
9	A04138301	TERMINAL COVER EMBRACO	1
10	ES5332	DRYER (DRY FILTER)	1
11	A13962405	CAPACITOR RF 4UF-6.3MM	1
12	811978901	GROMMET COMPRESSOR	4
13	807822703	BASE COMPRESSOR ASSY (INCLUDES ITEMS 15 & 16)	1
14	811943502	POWERCORD RF AU EMBRACO	1
15	811998301	SHAFT ROLLER	2
16	811998202	ROLLER REAR	2
17	A03210501	VALVE SD	1
17A	A02904501	COVER BODY, SINGLE VALVE	1
NI	A02904502	COVER LID SINGLE VALVE	1
*18	A03978301	DRAIN PAN & HEATER TUBE ASSY	1
20	808293601	TUBE PROCESS	1
NI	A04297601	TUBE JUMPER H/X 70W EMBRACO	1

*NOTE: Item 18 - The parts for this assembly are also available separately:

PN: **A03633601**: HEATER TUBE, DRAIN PAN (TYPE M) x 1

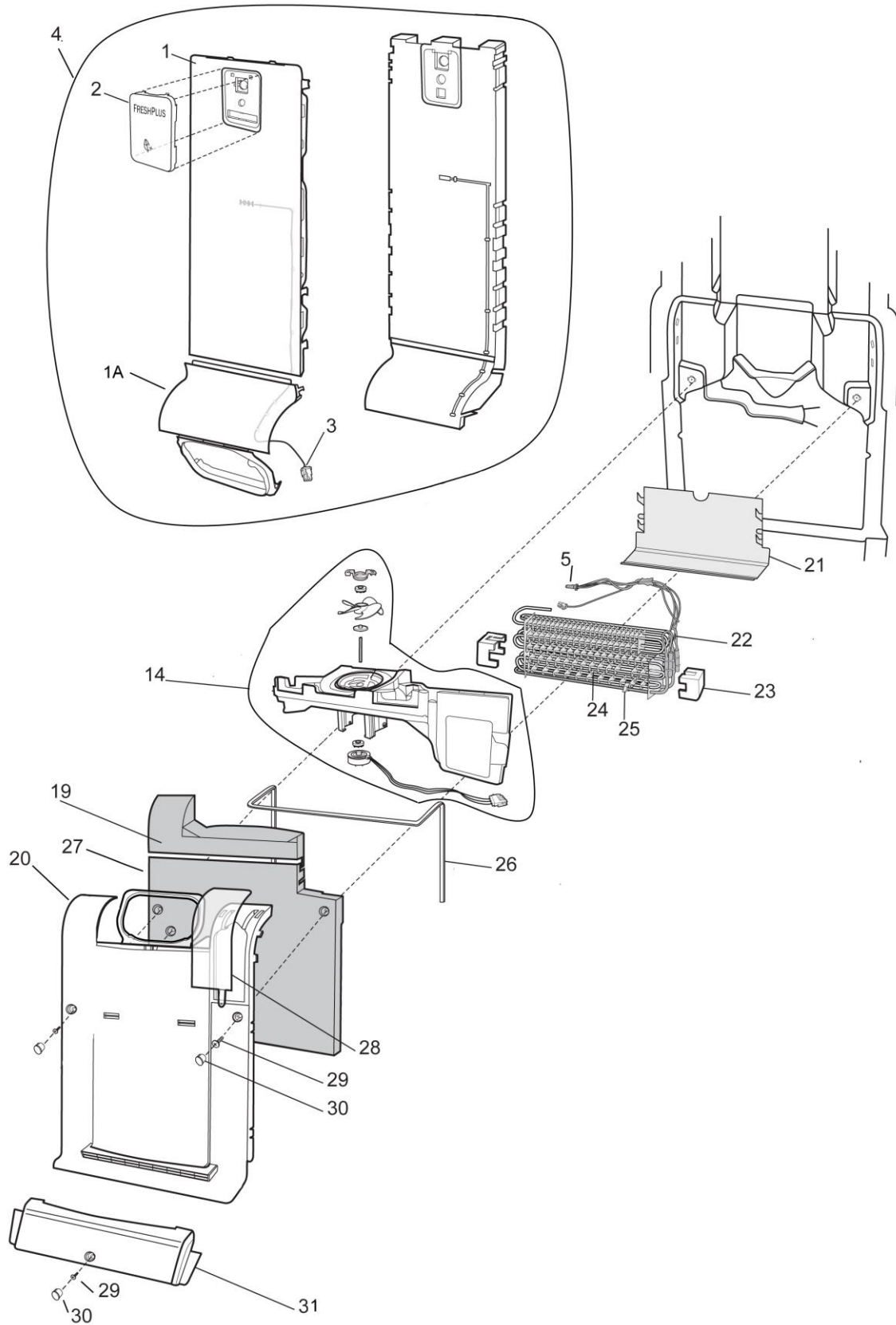
PN: **A01262601**: PAN DRAIN x 1

PN: **A03637801**: SPACER 3 TURN HEATER x 2

MODEL: EFE4227SC-L

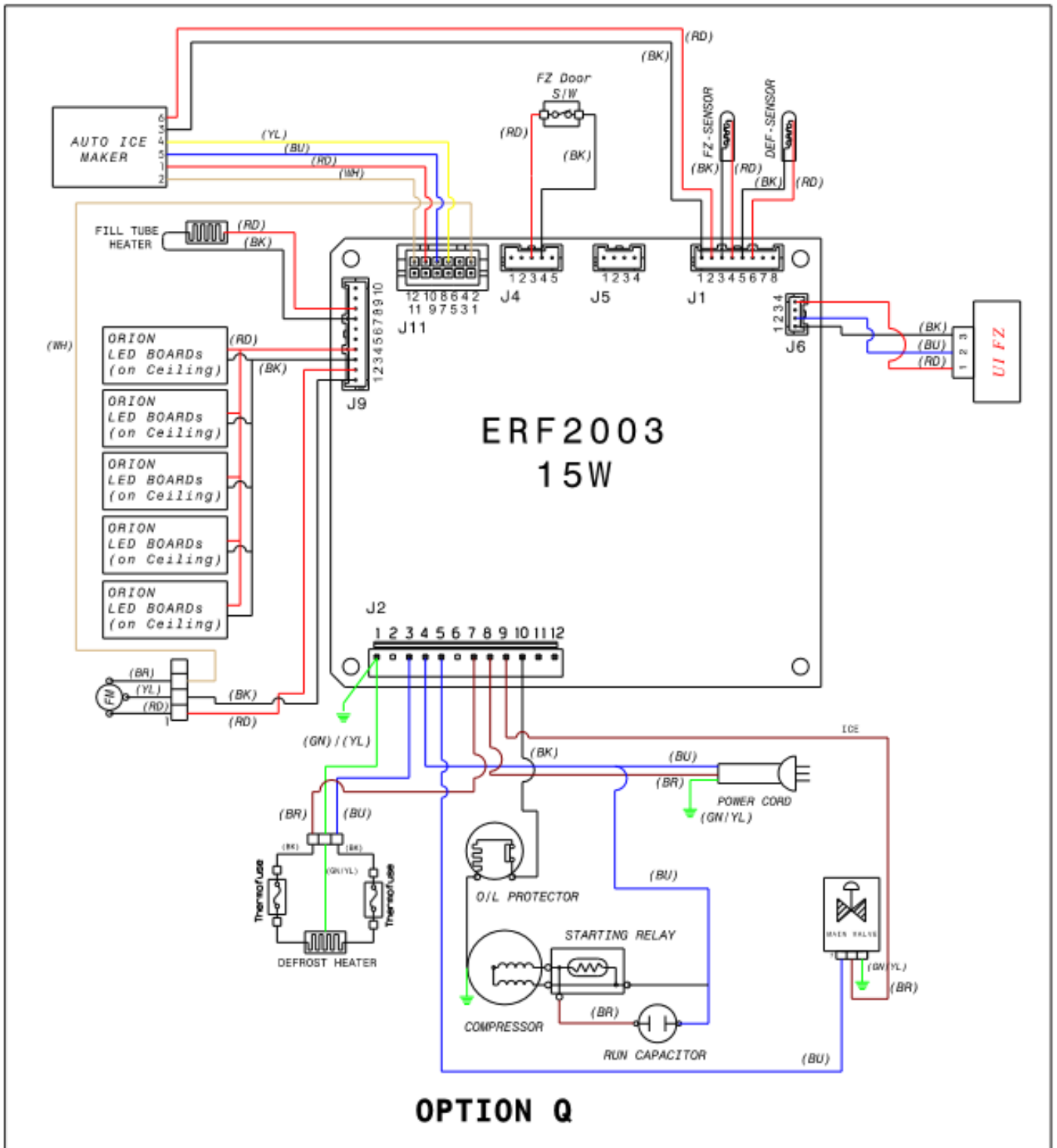
EVAPORATOR / DUCT

Ex 8449M



ITEM	PART NO.	DESCRIPTION Ex 8449M	QTY
1	A00762701	COVER MULTIFLOW UPPER	1
1A	A02149101	COVER MULTIFLOW BOTTOM	1
2	A00685606	COVER DEO BAFFLE SILVER-ART	1
3	A05257403	HARNESS-ASSY M/FLOW TF EAU/SEA (INCLUDES SENSOR)	1
4	A02457701	MULTIFLOW ASY SD FZ ELUX (INC. 1, 1A, 2, & 3)	1
5	A05206103	HARNESS-ASSY SENSOR DEFROST SD	1
14	8090692081	MOTOR AND FAN SHROUD ASSY	1
19	A02149801	DUCT, EPS TOP	
20	A02456202	COVER EVAPORATOR ASSY SD FZ (INC. 14, 19, 26 & 27).	1
21	A01097401	TRAY, EVAPORATOR	
22	A01058204	HEATER RAD DEF R600 240V BF70W	1
23	N/A	SUPPORT EVAPORATOR	2
24	A04063203	EVAPORATOR FF SD FZ	1
25	811980402	CLAMP NTC EVAPORATOR	1
26	811950601	SEAL FOAM	1
27	A02149901	DUCT, EPS BTM	1
28	A02456601	COVER EVAPORATOR LID SD 70	11
29	811949503	SCREW TRUSS 4.2X13	3
30	811971601	COVER SCREW	3
31	A02624601	COVER EVAP EXTENSION SD	1

WIRING DIAGRAM



Publication Version Control Chart		
Issue Number	Reason	Date
1	Initial Release	02-03-2019