



Electrolux

SERVICE MANUAL ACCESSIBILITY

Gemini project

SERIES 500 & 700

- Electrolux UltimateCare II
- Westinghouse EasyCare



EN

Publication number

599859895

Edition: 05/2022 - Rev. 00

FOR INTERNAL AND PARTNERS USE ONLY

© ELECTROLUX BA APAC&MEA
TECHNICAL DOCUMENTATION
ELECTROLUX THAILAND
1910 ELECTROLUX BUILDING
NEW PETCHBURI RD BANGKAPI, HUAI KHWANG
BANGKOK, 10310

Contents

1	PURPOSE OF THIS MANUAL	4
2	SAFETY	5
3	TOPLOAD RANGE	6
4	CONTROL PANEL	7
4.1	DI-ASSEMBLY	7
4.2	ASSEMBLY	8
5	DISPLAY BOARD (UI BOARD)	8
5.1	DI-ASSEMBLY	8
5.2	ASSEMBLY	9
6	PRESSURE SENSOR	10
6.1	DI-ASSEMBLY	10
6.2	ASSEMBLY	10
7	CAPACITOR	10
7.1	DI-ASSEMBLY	10
7.2	ASSEMBLY	11
8	SWITCH KNOCK OFF	11
8.1	DI-ASSEMBLY	11
8.2	ASSEMBLY	11
9	INLET VALVE	11
9.1	DI-ASSEMBLY	11
9.2	ASSEMBLY	12
10	WATER DISTRIBUTOR	13
10.1	DI-ASSEMBLY	13
10.2	ASSEMBLY	13
11	MAIN ELECTRONIC BOARD	14
11.1	DI-ASSEMBLY	14
11.2	ASSEMBLY	14
12	PANEL TOP	14
12.1	DI-ASSEMBLY	14

12.2 ASSEMBLY	14
13 NOZZLE JET	15
13.1 DI-ASSEMBLY	15
13.2 ASSEMBLY	15
14 SPIN TUB ASSY	15
14.1 DI-ASSEMBLY	15
14.1.1 AGITATOR	15
14.1.2 LPA	16
14.2 ASSEMBLY	17
14.2.1 AGITATOR	17
14.2.2 LPA	17
15 MOTOR (INDUCTION)	17
15.1 DI-ASSEMBLY	17
15.2 ASSEMBLY	18
16 MOTOR (DIRECT GEAR)	18
16.1 DI-ASSEMBLY	18
16.2 ASSEMBLY	19
17 GEAR BOX	19
17.1 DI-ASSEMBLY	19
17.1.1 MOTOR INDUCTION	19
17.1.2 MOTOR DIRECT GEAR	20
17.2 ASSEMBLY	20
18 ACTUATOR	21
18.1 DI-ASSEMBLY	21
18.2 ASSEMBLY	21
19 INVERTER ELECTRONIC BOARD	21
19.1 DI-ASSEMBLY	21
19.1.1 TYPE 1	21
19.1.2 TYPE 2	22
19.2 ASSEMBLY	22

<u>20</u>	<u>DRAIN PUMP</u>	<u>22</u>
20.1	DI-ASSEMBLY	22
20.2	ASSEMBLY	24
<u>21</u>	<u>DRAIN VALVE</u>	<u>24</u>
21.1	DI-ASSEMBLY	24
21.2	ASSEMBLY	24
<u>22</u>	<u>HEATING ELEMENT</u>	<u>25</u>
22.1	DI-ASSEMBLY	25
22.2	ASSEMBLY	25
<u>23</u>	<u>SUSPENSION ROD</u>	<u>26</u>
23.1	DI-ASSEMBLY	26

1 PURPOSE OF THIS MANUAL

The purpose of this service manual is to provide service provider who is already authority with the repair procedures with information regarding appliances

This document specifies the Accessibility for the Gemini range of topload washing machines for

- Electrolux UltimateCare II (GEM 2) Series 500 and 700.
- Westinghouse EasyCare (SWITCH) Series 500 and 700.

Note: Graphics in this document may common use between Series 500 and 700.

The manual deals with the following topics:

- Disassembly
- Assembly

Document Revisions

Rev.	Date	Description	Author
00	05/2022	Document creation	Wanravee S,

2 SAFETY



- Any work on electrical appliances must only be carried out by qualified personnel.
- Before carrying out work on the appliance, use suitable instruments to check that the power supply system in the house is fully efficient.
- This platform is not fitted with an ON/OFF switch. Before you access internal components, take the plug out of the socket to disconnect the power supply.
- When the servicing is completed, ensure that all the connections have been made properly and that all the appliance's safety conditions are as good as new.
- The connection between the earth terminal and the earthed metallic parts must have a low resistance.
- All the work to be performed inside the appliance requires specific skills and knowledge and may only be carried out by qualified and authorised service engineers.
- Some of the components in the mechanical part could cause injuries, so wear suitable protection and proceed with caution.



3 TOPLOAD RANGE

Electrolux & Westinghouse : Series 700



Electrolux & Westinghouse : Series 500



4 CONTROL PANEL

4.1 DI-ASSEMBLY



(1) Remove Lid Cover LH & RH side



(2) Remove Damper lid LH & RH side

(3) Remove Lid glass



NOTE : Series 500 Only Damper Lid LH available



(4) Unscrews the 2 Screws (Yellow) on the back side control panel

(5) Release the tab (Red) which secure the control panel to worktop panel.

TOOL

Cross screwdriver PH1/PH2



(6) Lift the back part of control panel slightly, move and lift it toward the front

* If it tigh, Insert a flat screwdriver into the front slots as the the arrow indicated with parallel doign with step (6).

(7) Unplug the connector whichi connect the display PCB

4.2 ASSEMBLY

(1) Connect the connector diaplay PCB to control board

(2) Paste the control panel, Screw the 2 screws

(3) Paste Lig glass then insert damper LH & RH side

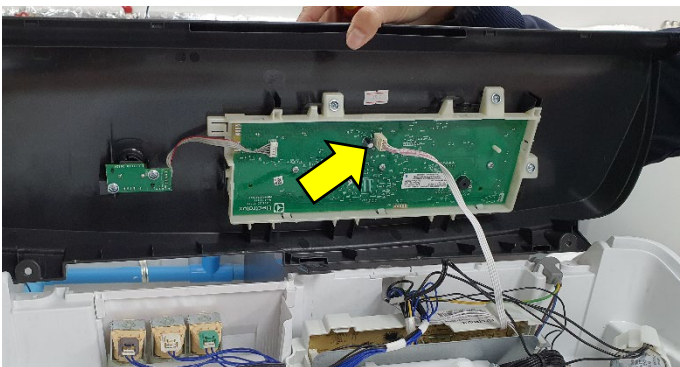
(4) Insert Lid Cover LH & RH side

5 DISPLAY BOARD (UI BOARD)

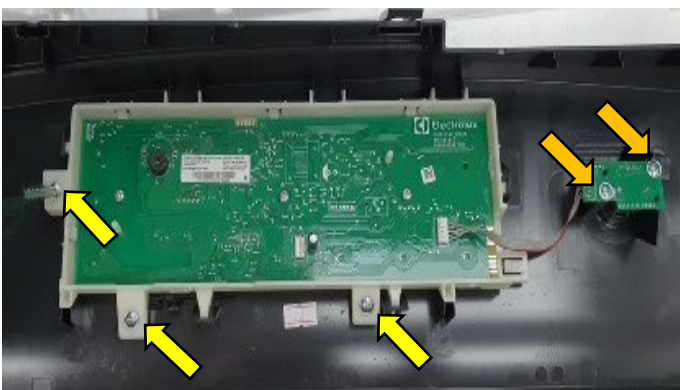
5.1 DI-ASSEMBLY

(1) Remove the control panel see in **5.1 Di-assembly Control panel**

WARNING : The sensor located in the display boards could be ata potential of 220 volts

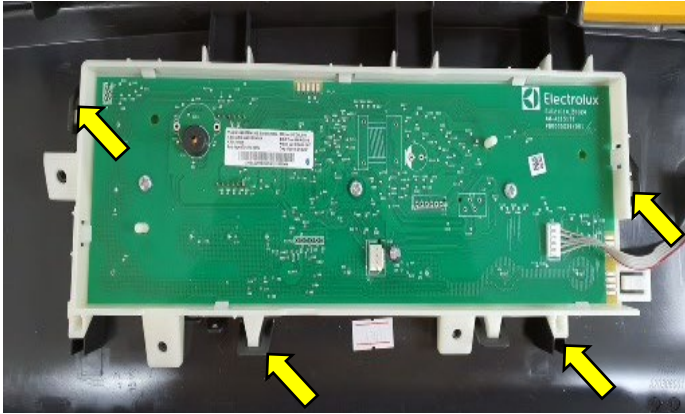


(2) Disconnect the connector which connects the control/Display PCB



(3) Unscrew the three screws (Yellow arrow) holding the PCB to the control panel. And Unscrew 2 Screws (Gold arrow) holding the Knob

TOOL	Cross screwdriver PH1/PH2
------	---------------------------



(4) Release the hooks which secure the display board (UI) to the control panel

(Take care not to break the hooks)

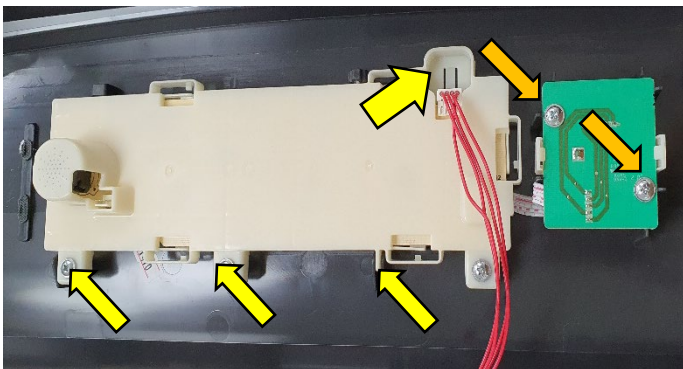
Lift it up to extract it.

*Beware plastic tab broken.



(5) Display board extracted from the control panel

For Series 500



(2) Disconnect the connector which connects the control/Display

(3) Unscrew the three screws (Yellow) holding the PCB to the control panel. And Unscrew 2 Screws (Gold) holding the Knob

5.2 ASSEMBLY

(1) Re-assembling Display board to control panel

(2) Screw the three screws at display board and screw two screws at selector board

(3) Connect the connector to display board

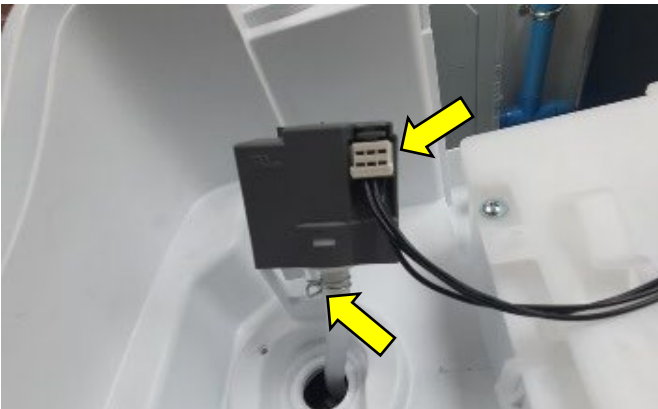
6 PRESSURE SENSOR

6.1 DI-ASSEMBLY

(1) Remove the control panel see in **5.1 Di-assembly Control panel**



(2) Press the tab which secure it to the cabinet and remove it with slightly lift it up.



(3) Disconnect the connector

(4) Unclamp the clamp which holding the pressure sensor with tube

(5) Extract the pressure sensor from tube

6.2 ASSEMBLY

(1) Re-assembling tube to pressure sensor

(2) connect the connector to pressure sensor

(3) Press the pressure sensor to the position

7 CAPACITOR

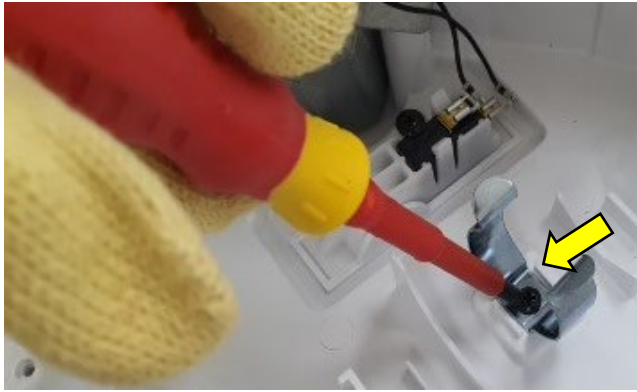
7.1 DI-ASSEMBLY

(1) Remove the control panel see in **5.1 Di-assembly Control panel**



(2) Pull out the the capacitor clamp holder then lift up the capacitor

(3) Extract capacitor support from capacitor.



In case, change Capacitor clamp holder
 (4) Unscrew 1 screw which holding clamp with work top.

TOOL	Cross screwdriver PH1/PH2
-------------	---------------------------

CAUTION : Use a pair of gloves, as some parts maybe sharp.

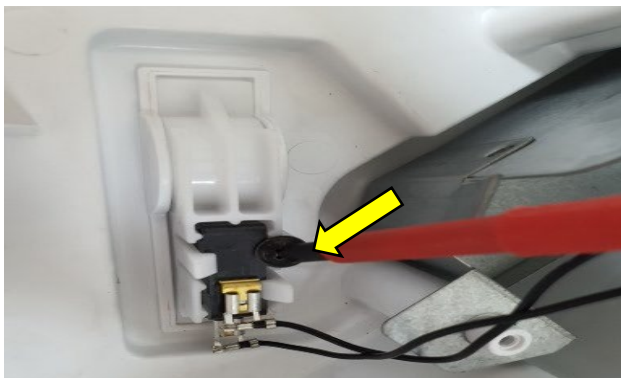
7.2 ASSEMBLY

(1) Repeat the same tasks in reverse order

8 SWITCH KNOCK OFF

8.1 DI-ASSEMBLY

(1) Remove the control panel see in **5.1 Di-assembly Control panel**



(2) Unscrew a screw which holding Switch Knock-off to a lever knock-off

(3) Lever Knock-OFF can separate

TOOL	Cross screwdriver PH1/PH2
-------------	---------------------------

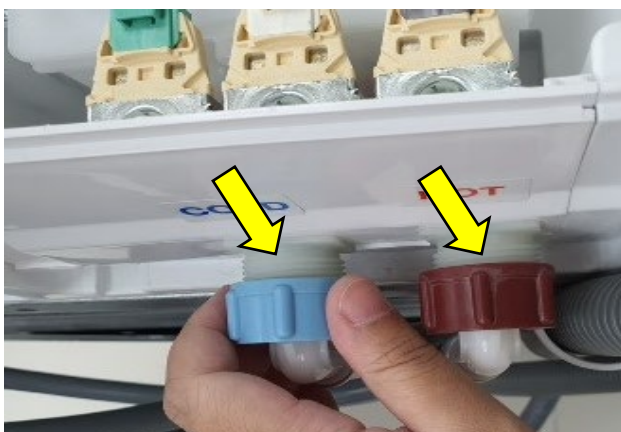
8.2 ASSEMBLY

(1) Repeat the same tasks in reverse order

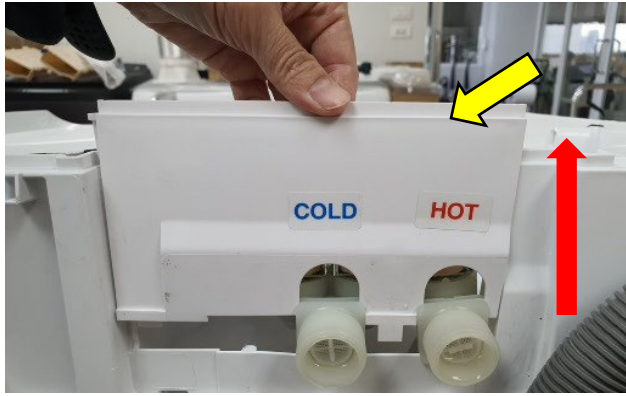
9 INLET VALVE

9.1 DI-ASSEMBLY

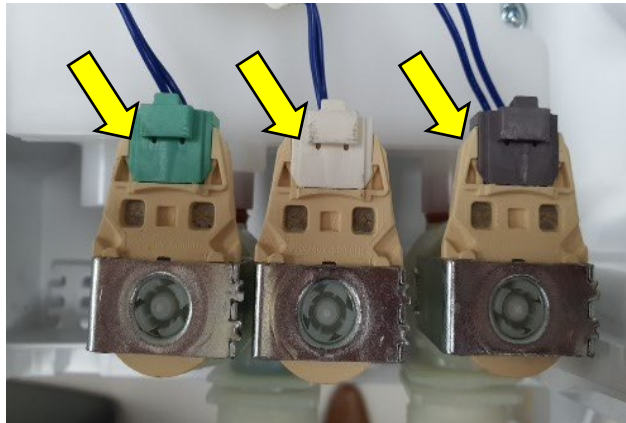
1) Remove the control panel see in **5.1 Di-assembly Control panel**



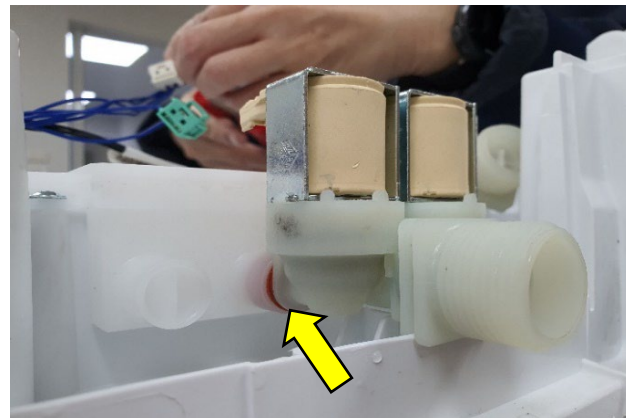
(2) Remove COLD/HOT WATER INLET HOSE



(3) Remove Cover valve upward direction



(4) Disconnect the connectors from Solenoid valves



(5) Extract Inlet valve from Water distributor & Lift it up (The inlet valve will remove)

9.2 ASSEMBLY

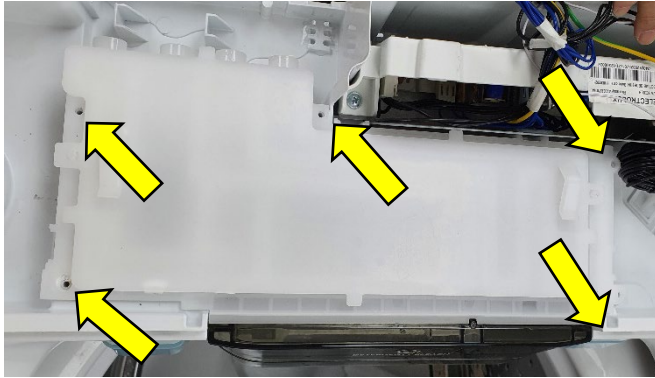
- (1) Re-assembling inlet valve, make sure the inlet valve completely assembling in the correct position.
- (2) Connect the connectors
- (3) Paste down the Cover valve
- (4) Tighten water inlet hose

10 WATER DISTRIBUTOR

10.1 DI-ASSEMBLY

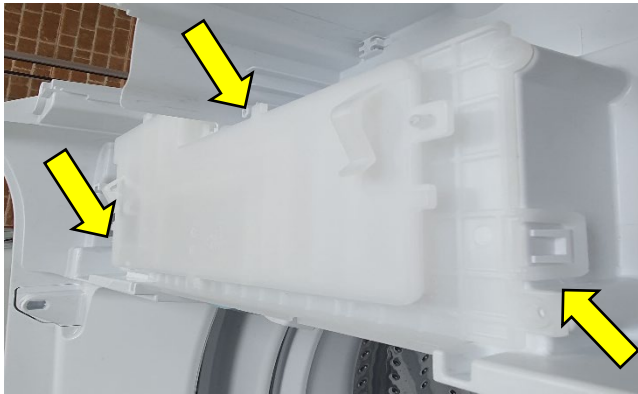
(1) Remove the control panel see in **5.1 Di-assembly Control panel**

(2) Remove the Inlet valve see in **10.1 Di-assembly Inlet valve**

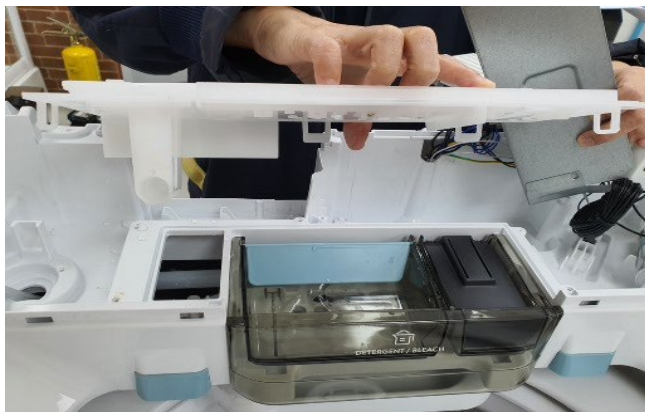


(3) Unscrew the 5 screws on water distributor.

TOOL	Cross screwdriver PH1/PH2
-------------	---------------------------



(4) Release the tab which secure the water distributor



(5) Move the water distributor upward

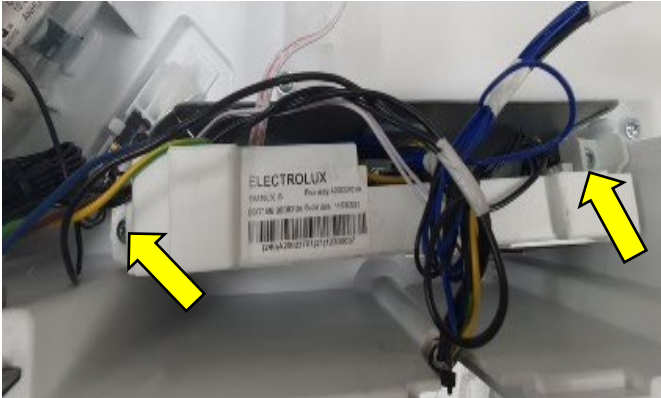
10.2 ASSEMBLY

(1) Repeat the same tasks in reverse order

11 MAIN ELECTRONIC BOARD

11.1 DI-ASSEMBLY

(1) Remove the control panel see in **5.1 Di-assembly Control panel**



CAUTION : Use a pair of gloves, as some parts may be sharp.

(2) Unscrew two screws which holding the Main Electronic board to metal cover board

(3) Lift the main Electronic board, slightly

TOOL	Cross screwdriver PH1/PH2
-------------	---------------------------



(4) Disconnect all the connectors

(1) When reassembling, once connect the connectors make sure the wiring inside the box. The wiring will not be cut by the sharp part

(2) Tighten the screws at metal cover board

12 PANEL TOP

12.1 DI-ASSEMBLY



(1) Unscrew 2 screws which holding top Panel to cabinet.

TOOL	Cross screwdriver PH1/PH2
-------------	---------------------------

12.2 ASSEMBLY

(1) Repeat the same tasks in reverse order

13 NOZZLE JET

13.1 DI-ASSEMBLY

(1) Remove the Panel Top see in 13.1 Di-assembly Panel Top



(2) Unscrew 4 screws which secure nozzle jet with Hose jet

(3) Extrach Nozzle jet from hose jet

TOOL	Cross screwdriver PH1/PH2
------	---------------------------

13.2 ASSEMBLY

(1) Repeat the same tasks in reverse order

14 SPIN TUB ASSY

14.1 DI-ASSEMBLY

(1) Remove the Panel Top see in 13.1 Di-assembly Panel Top



(2) Unlock all hooks which secure the cover outer shell to Drum assy.

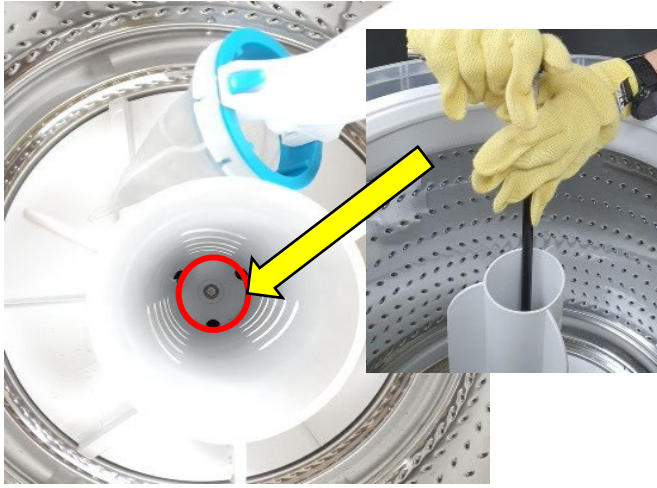
CAUTION : Take care not to break the hooks

(3) Lift up the cover shell

14.1.1 AGITATOR



(4) Remove filter assy



(5) Unscrew the screw which holding Agitator to plate assy

(6) Lift agitator up

TOOL	1. Socket No.10 2. Long socket handle
-------------	--

14.1.2 LPA



(4) Take out the cap LPA



(5) Unscrew the screw which holding LPA (Drum lifter) to plate assy

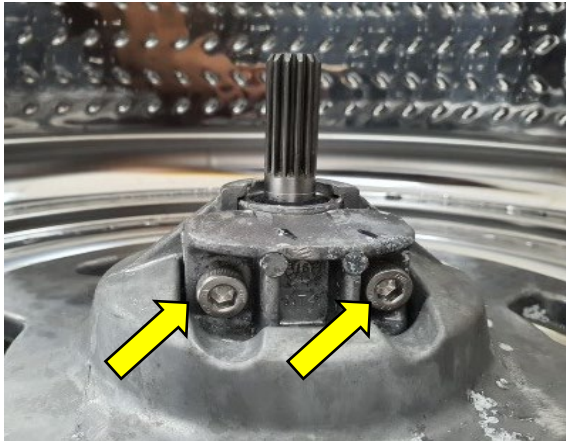
(6) Take out the LPA (Drum lifter)

TOOL	1. Socket No.10 2. Socket handle
-------------	-------------------------------------



(7) Unscrew the screw which secure Drum assy with plate assy

TOOL	1. Socket No.8 2. Socket handle
-------------	------------------------------------



(8) Unscrew 2 screw which secure the plate assy

TOOL	Torx/Star screwdriver T25
-------------	---------------------------



(9) Take out the Spin tub assy

*In case if difficulty to take out, use rubber hammer slightly knock the plate assy.

(10) Remove plate assy

14.2 ASSEMBLY

14.2.1 AGITATOR

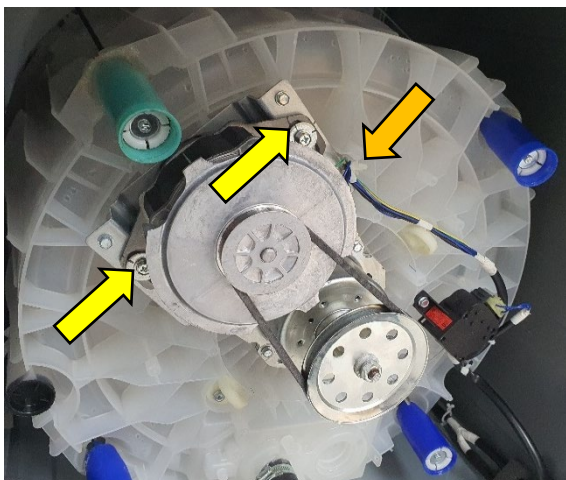
(1) Repeat the same tasks in reverse order

14.2.2 LPA

(1) Repeat the same tasks in reverse order

15 MOTOR (INDUCTION)

15.1 DI-ASSEMBLY



(1) Disconnect the connector (Gold arrow)

(2) Loosen two screws (Yellow arrow) which secure motor to Frame support and remove belt which connect motor to gear box.

(3) Unscrew 2 screws

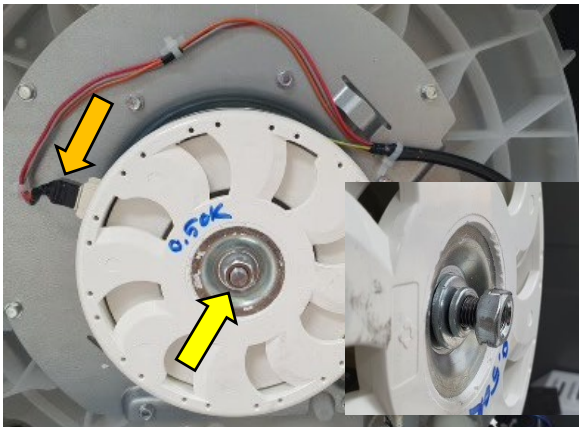
TOOL	1. Socket No.10 2. Socket handle
-------------	-------------------------------------

15.2 ASSEMBLY

- (1) Insert the belt, Position the belt andn align it with the centre of the pulley
- (2) Tighten the screws
- (3) Turning the pulley,check the belt position
- (4) Connects the connector

16 MOTOR (DIRECT GEAR)

16.1 DI-ASSEMBLY

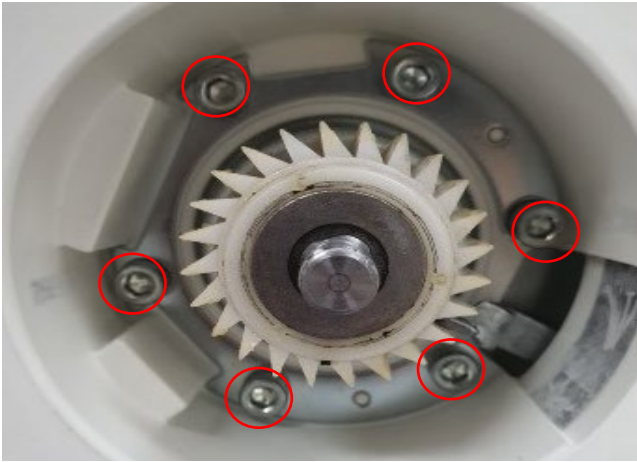


- (1) Disconnect the connector (Gold arrow)
- (2) Unscrew Nut (Yellow arrow) which secure the motor

TOOL	1. Socket No.15 2. Socket handle
-------------	-------------------------------------



- (3) Take out the cover motor forward



(4) Unscrew 6 screws

(5) Take out motor forward

TOOL	Hex head screwdriver
-------------	----------------------

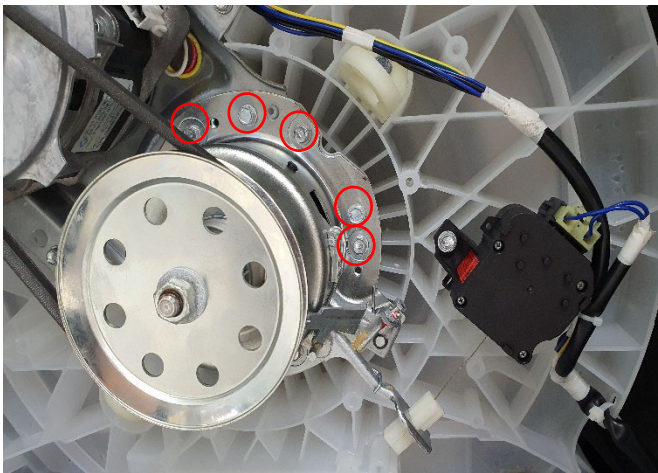
16.2 ASSEMBLY

(1) Repeat the same tasks in reverse order

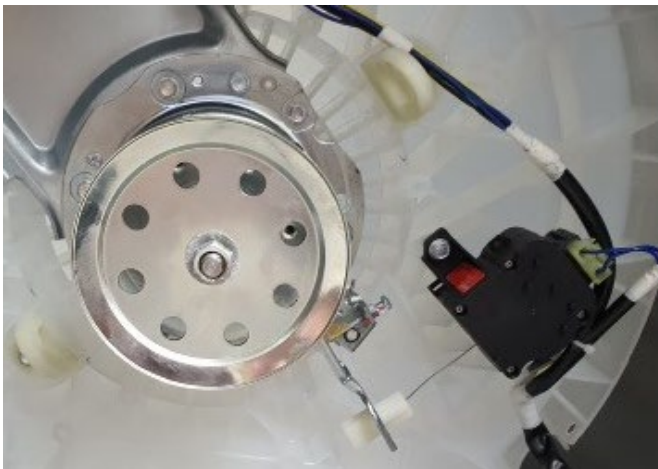
17 GEAR BOX

17.1 DI-ASSEMBLY

17.1.1 MOTOR INDUCTION



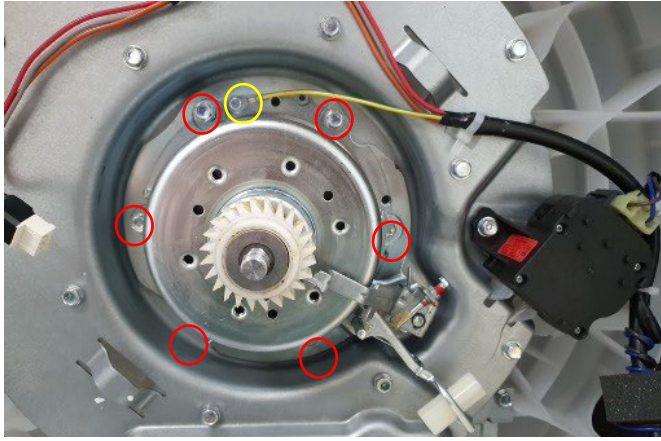
(1) Loosen 10 Screws which secure Gear box to Frame support and remove belt which connect gearbox to motor



(2) Unscrew 10 screws

TOOL	1. Socket No.10 2. Socket handle
-------------	-------------------------------------

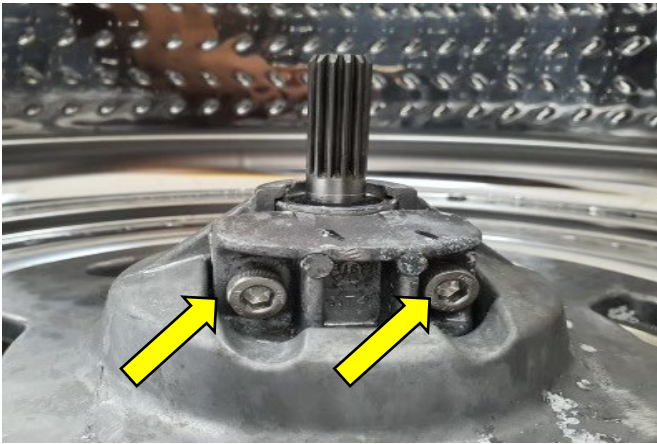
17.1.2 MOTOR DIRECT GEAR



(1) Unscrew the screw (Yellow circle) which connect Gear box to Actuator

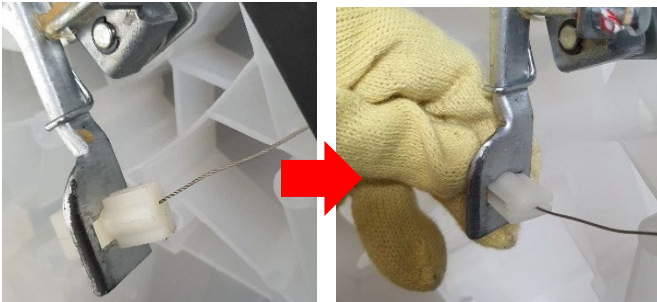
(2) Unscrew 6 screws (Red circle) which holding gear box to support plate

TOOL	1. Socket No.10 & No.8 2. Socket handle
-------------	--

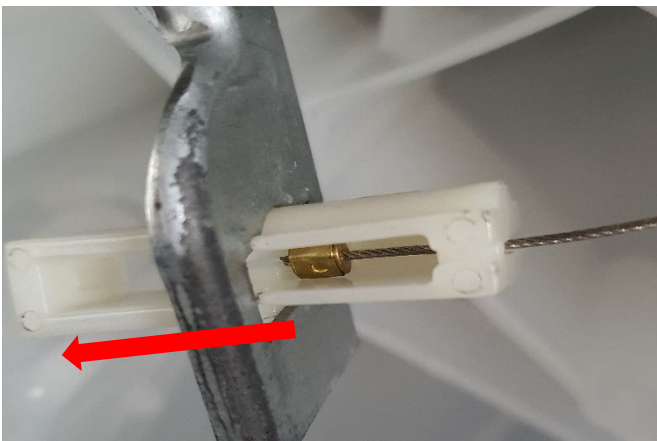


(3) Unscrew 2 screw which secure the plate assy

TOOL	Torx/Star screwdriver T25
-------------	---------------------------



(4) Rotating Drain valve link see in picture



(5) Sliding the link forward then extract it from Link drain valve

(6) Remove Link drain valve backward

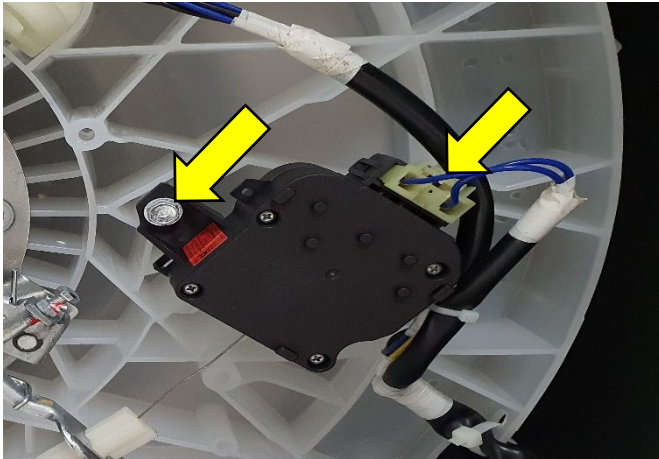
(7) Gear box can be remove

17.2 ASSEMBLY

(1) Repeat the same tasks in reverse order

18 ACTUATOR

18.1 DI-ASSEMBLY



(1) Disconnect the connector

(2) Unscrew the screw

TOOL	1. Socket No.10 2. Socket handle
-------------	-------------------------------------

18.2 ASSEMBLY

(1) Repeat the same tasks in reverse order

19 INVERTER ELECTRONIC BOARD

19.1 DI-ASSEMBLY

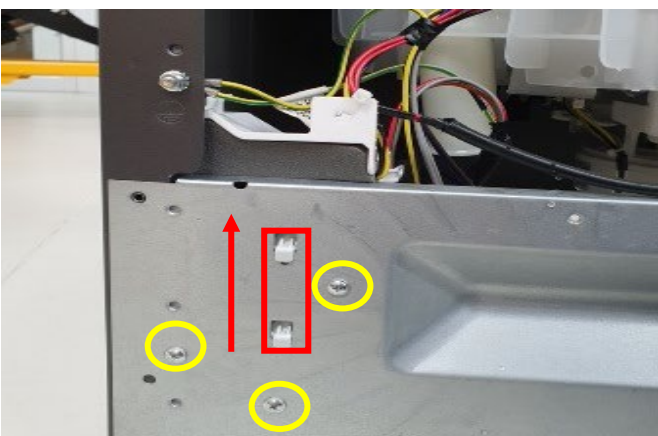


(1) Unscrew 6 screws at rear panel and take out the panel

TOOL	Cross screwdriver PH1/PH2
-------------	---------------------------

CAUTION : Use a pair of gloves, as some parts maybe sharp.

19.1.1 TYPE 1



(2) Unscrew 3 screws (Yellow arrow)

(3) Unfasten the tab (Red box) with sliding up direction

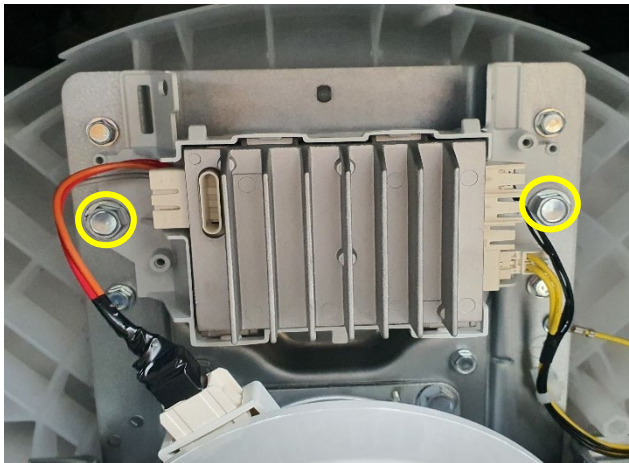
TOOL	Cross screwdriver PH1/PH2
-------------	---------------------------



19.1.2 TYPE 2

(4) Release all wire which connect to Inverter board

CAUTION : Position the wiring carefully when re-assembling the inverter. This is to avoid any wire being squashed / pressed against the cabinet with the risk of current leakage.



(2) Disconnect all connectors

(3) Unscrews the 2 screws

TOOL	1. Socket No.14 2. Socket handle
-------------	-------------------------------------

19.2 ASSEMBLY

(1) Repeat these steps in the reverse order

20 DRAIN PUMP

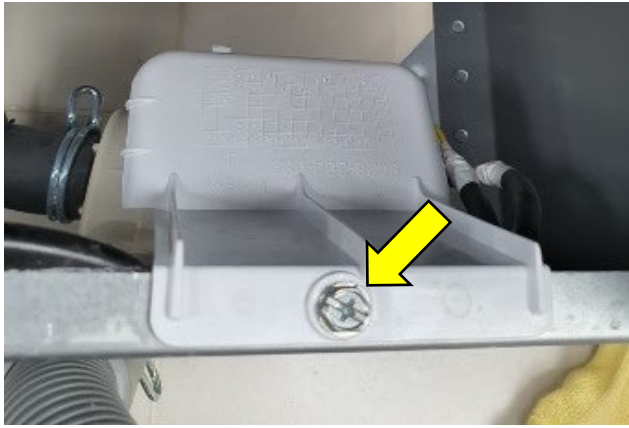
20.1 DI-ASSEMBLY



(1) Unscrew 6 screws at rear panel and take out the panel

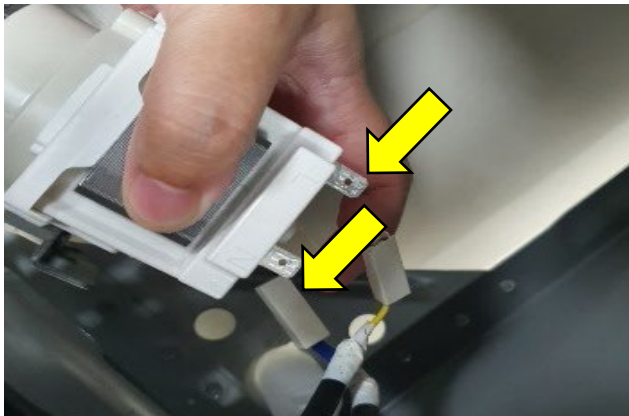
TOOL	Cross screwdriver PH1/PH2
-------------	---------------------------

CAUTION : Use a pair of gloves, as some parts maybe sharp.

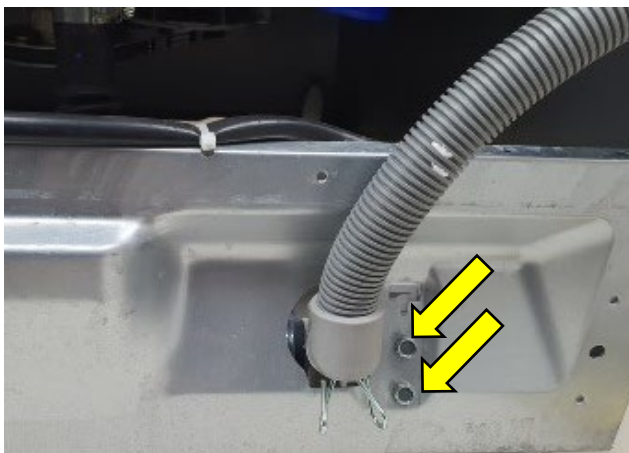


(2) Unscrew the screw which holding cover pump and take out the cover pump

TOOL	Cross screwdriver PH1/PH2
-------------	---------------------------



(3) Disconnect the connector which connect to drain pump



(4) Unscrew 2 screws which secure the drain pump to panel

TOOL	1. Socket No.10 2. Socket handle
-------------	-------------------------------------



(5) Remove hose clamp then hose drain from drain pump



- (6) Remove Hose bowl to pump
- (7) The drain pump can be remove

20.2 ASSEMBLY

- (1) Repeat these steps in the reverse order

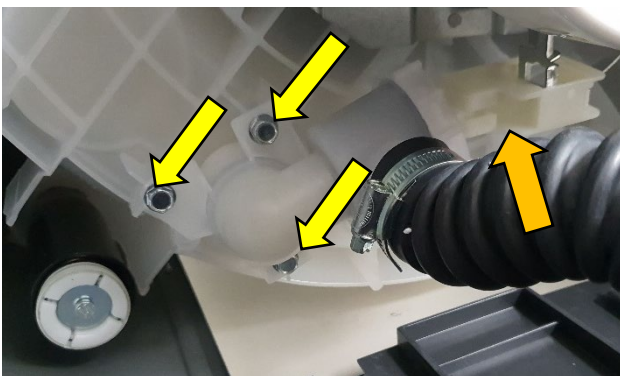
21 DRAIN VALVE

21.1 DI-ASSEMBLY



- (1) Unscrew 6 screws at rear panel and take out the panel

TOOL	Cross screwdriver PH1/PH2
-------------	---------------------------



- (2) Unscrew 3 screws (Yellow arrow) which secure drain valve with outer bowl
- (3) Unlink drain valve link (Gold arrow) with actuator

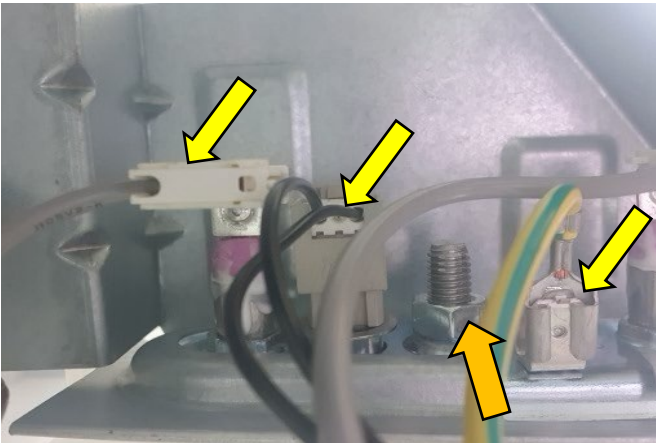
TOOL	1. Socket No.10 2. Socket handle
-------------	-------------------------------------

21.2 ASSEMBLY

- (1) Repeat these steps in the reverse order

22 HEATING ELEMENT

22.1 DI-ASSEMBLY



(1) Remove heating element connectors (Yellow arrow)

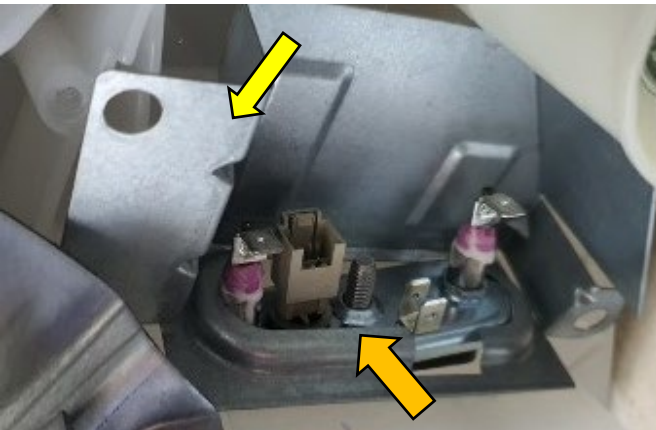
(2) Remove the Nut (Gold arrow) securing to heating element & bracket

TOOL	1. Socket No.10
	2. Socket handle



(3) Unscrew the 2 screws (Yellow arrow) which secure the bracket

TOOL	1. Socket No.10
	2. Socket handle



(4) Remove bracket (Yellow arrow)

(5) Remove heating element (Gold arrow) by sliding out forward

22.2 ASSEMBLY

(1) Repeat these steps in the reverse order

23 SUSPENSION ROD

23.1 DI-ASSEMBLY

(1) Remove the Panel Top see in 13.1 Di-assembly Panel Top



(2) Remove 4 suspension rods



(3) Hold the suspension rod, then lift it up and rotate 90 degree. Suspension rod can be removed

ATTENTION : Carefully when put the Tub down after remove suspension rods. It might be hit the floor.

23.2 ASSEMBLY

(1) Repeat these steps in the reverse order