



FRONT LEAKAGE – WATER DROPS ON THE FLOOR

DESCRIPTION:

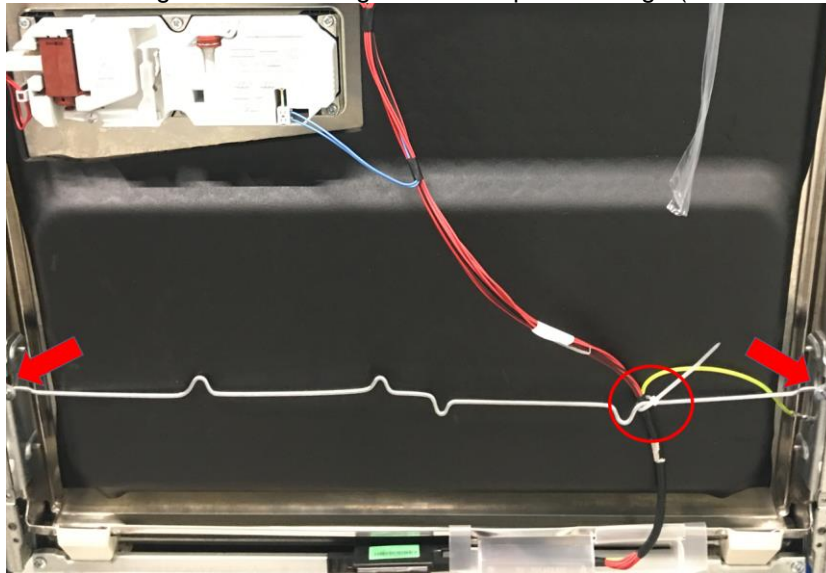
In Domodossola 60cm appliances it is possible to have the problem with front leakage – small water drops visible in front of the appliance.

SOLUTION:

Installation of the front protective shield on the hinge rod of the appliance.

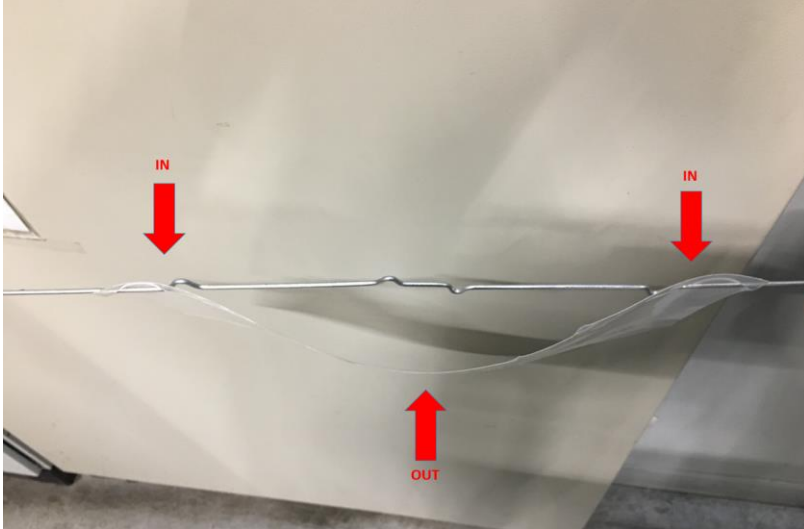
Instruction:

1. Uninstall outer door from appliance to get access to the hinge rod.
2. Take hinge rod off the hinge holders & plastic badge (marked with arrows & a circle on below picture):

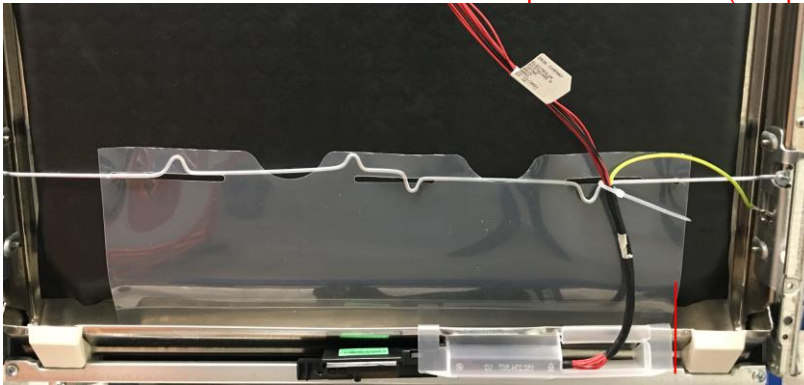


NOTE: Remember about the plastic badge that holds wire harness on the hinge rod – carefully pull out hinge rod from the badge – you can leave it on the wire harness as you will need to slide it back on the hinge rod.

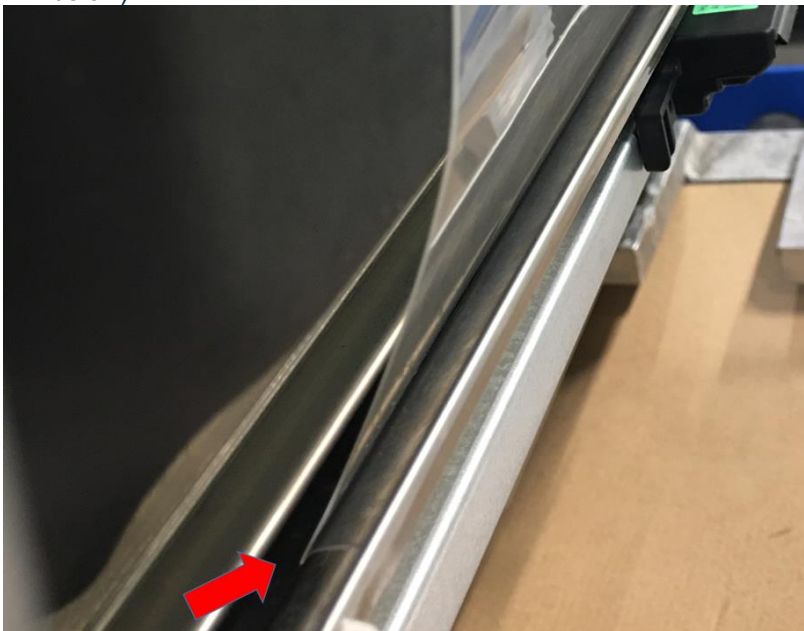
3. Install the front protective shield onto the hinge rod (order of insertion: in-out-in):



4. After installing the protective shield, stretch it over the hinge rod.
5. Install the hinge rod with protective shield back to the hinges and slide slightly right it should match with the right side of plastic wire harness protector (see red line on below picture):
Wire harness needs to be in-front of the protective shield (see picture below):



6. Protective shield should be placed in between of inner door's gasket and the bottom the tub (see picture below):



7. Install the outer door on the appliance.

SPARE PART NUMBER:

Old spare part code	New spare part code	Description
-	140223957014	Protection foil

QES CODE:

During the intervention please use work code XXX and:

Component	207
Defect	11

In the section for Tech. Comments start the description with the following:

[E??,E??,E??] SB599857927

[E??,E??,E??] – stands for the last 3 alarms read from the memory in the service mode

MODELS INVOLVED:

Full integrated and Built in 60cm models produced in Zarow.

INTERCHANGEABILITY:

N/A.

REVISION:

Revision	Date	Description	Author	Approved by - on
00	01.2022	Document Creation	Marcin Pluta	Sebastian Dziura