



Disassembly Instruction for Pangu FL

1. Main parts separation



1.1 Grab the grip area, pull handunit out from stick



1.2 Press the button to take nozzle out

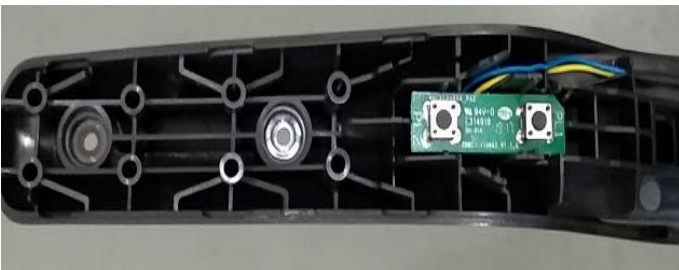


2.Handle disassembly

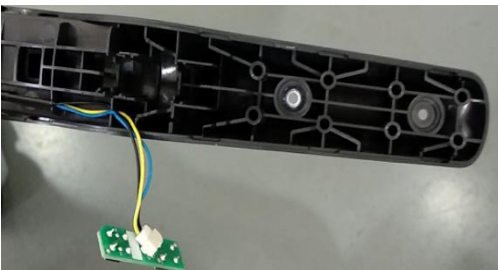
2.1 Remove 3pcs screws



2.2 Take out top lid of the handle



2.3 Take out the switch board



2.4 Pull the handle out



3.Handunit disassembly

3.1 Dust container release

3.1.1 Press the button



3.1.2 Hold the two sides and take the container out



3.2 Battery cover disassembly

3.2.1 Take out the filter lid, remove HEPA, remove two screws underneath

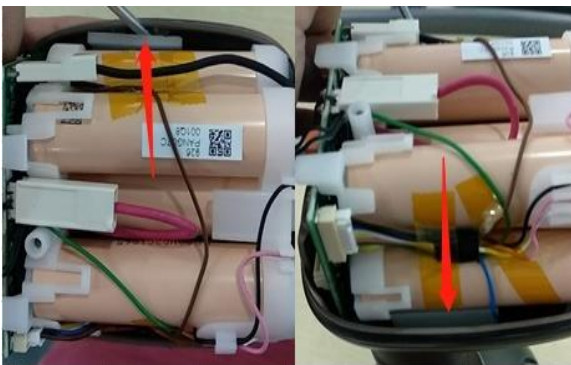


3.2.2 Hold the cover and take it out, take care that the hooks not broken(red arrow), otherwise need to replace with a new one

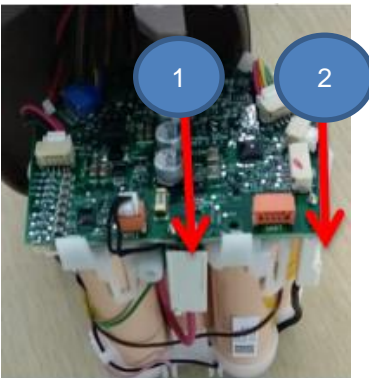


3.3 Battery pack disassembly

3.3.1 Pry up the two hooks(red arrow), take out the battery pack



3.3.2 Unlock the terminals from PCBA,number 1 firstly(positive), number 2 secondly(negative), then for other terminals



3.3.3 Remove all the screws



3.3.4 Press cup release button, take out the backbone, take care the connector not damaged showed in the red arrow area



3.4 Remove motor assembly and LED

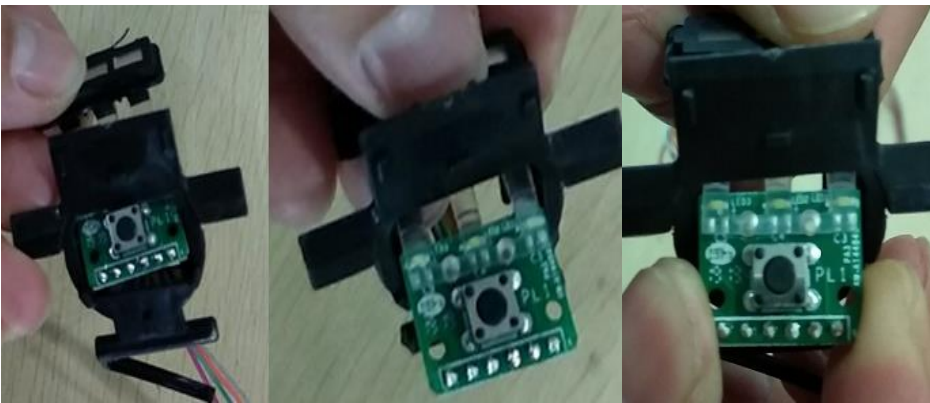
3.4.1 Take out motor assembly form motor housing



3.4.2 Press the button and lightguid



3.4.3 Take out LED



3.4.4 Disassemble motor assembly, take out suspension, unlock the 3pcs hooks (red arrow)



4. Bristle Nozzle disassembly



4.1 Unlock brushroll knob



4.2 Pull the grill, take out brushroll



4.3 Use flat screw driver to pry up the rubber blade holder, and then pull it out



4.4 Take out small wheels



4.5 Remove all below screws



4.6 Remove left/right cover, take out top lid and BRC pedal



4.7 Remove belt and unlock two screws,take out the motors



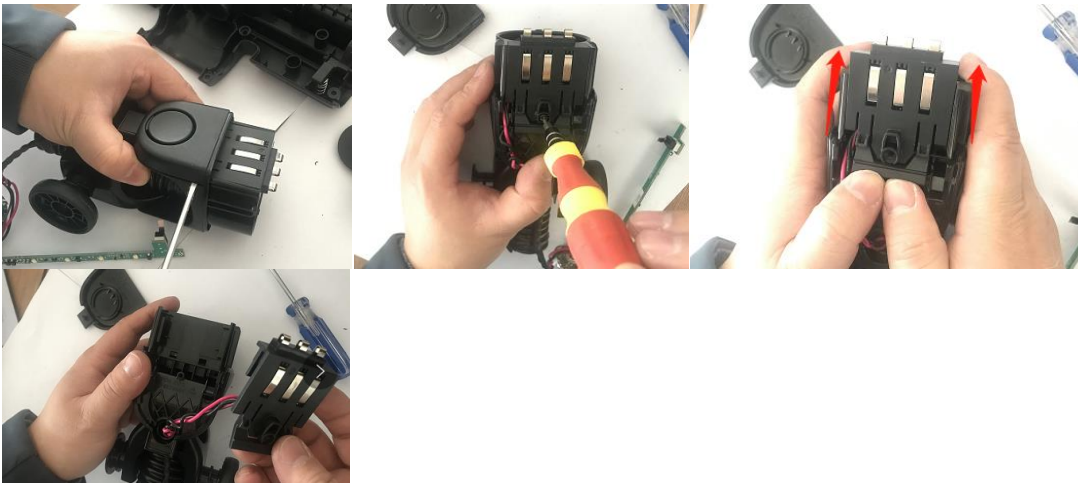
4.8 Pull out the hose from base



4.9 Use smaller flat screw driver to pry up the cover, unlock the screw to take out rear wheels



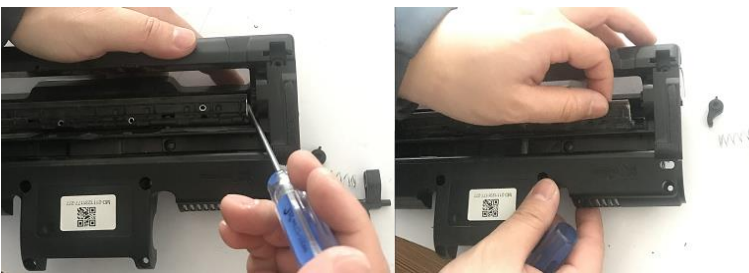
4.10 Use screwdriver to pry up the cover, unlock the screw, push up to remove the connector



4.11 Use small screwdriver to take out the BRC levers



4.12 Take out BRC blade



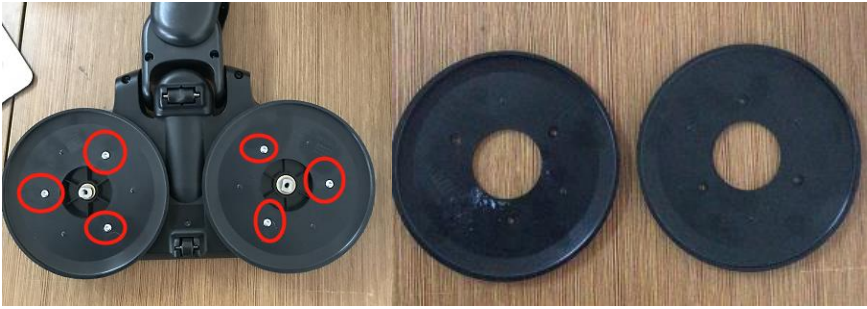
5.Porg nozzle disassembly



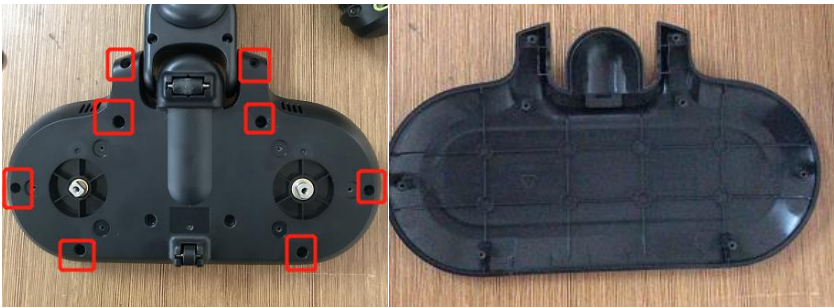
5.1 Use screw to pry up wheels and take them out, remove the pads,unlock the two screws (right-and-left threaded)



5.2 Unlock below screws and take out the discs



5.3 Unlock below 8pcs screws and take out the top cover



5.4 Remove below 12pcs screws and take out motor assembly and gear cover parts



5.5 Remove below two screws, knock on the shaft to take out the big gears



MODELS INVOLVED:

ES62CB25XX
AS62CB25XX
EFS714XX

REVISION:

Revision	Date	Description	Author	Approved by - on
00	1/2022	Disassembly Instruction	Nicole Jiang	Nicole Jiang