



### Disassembly Instruction for Midas camera version

1. Open the cover , take out the 2in1 water tank



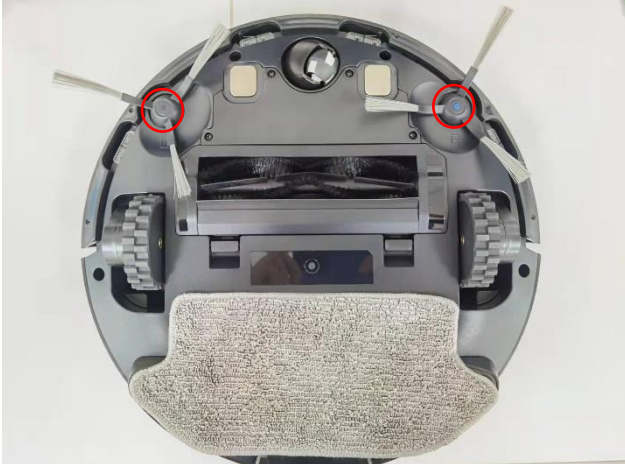
2. Remove the top cover



3. Remove the four screws from the pressure plate, take out the cover and lid



4. Pull out the left and right side brush assemble from bottom to top



5. Press the buckle to take out the mopping assemble



6. Press the buckle to remove the brush roll cover



7. Take out the brush roll



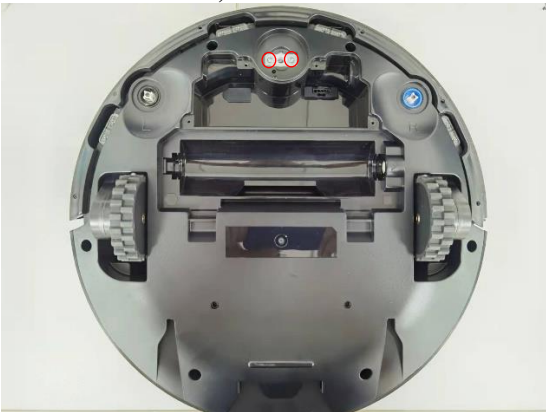
8. Pull out the front wheel assemble



9. Remove the 4 screws, unplug the cable, and remove the battery assembly



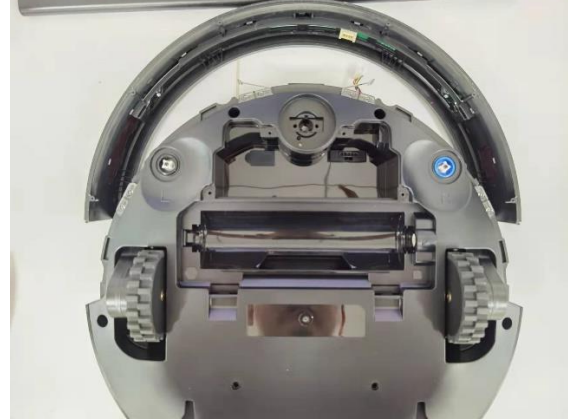
10. Unscrew 2 screws, take out the universal wheel shrapnel, universal wheel shaft sleeve



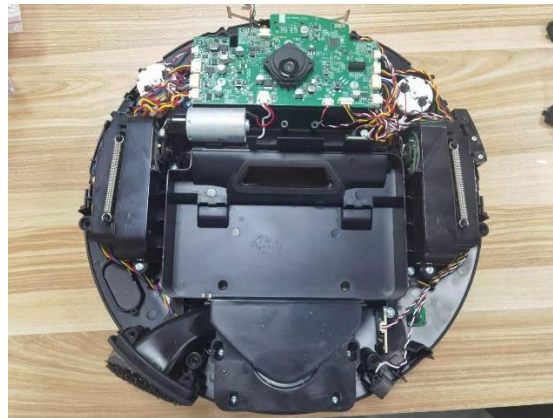
11. Remove the six screws at the position shown, remove the bumper



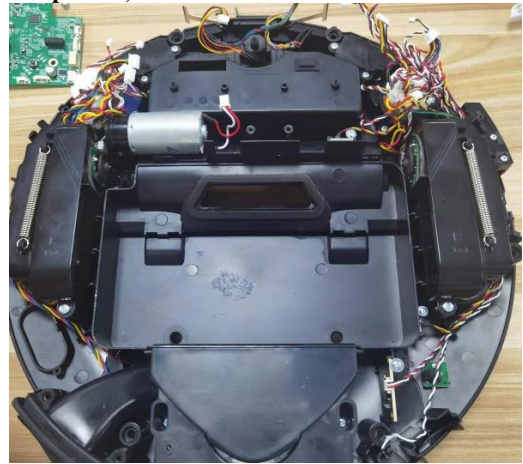
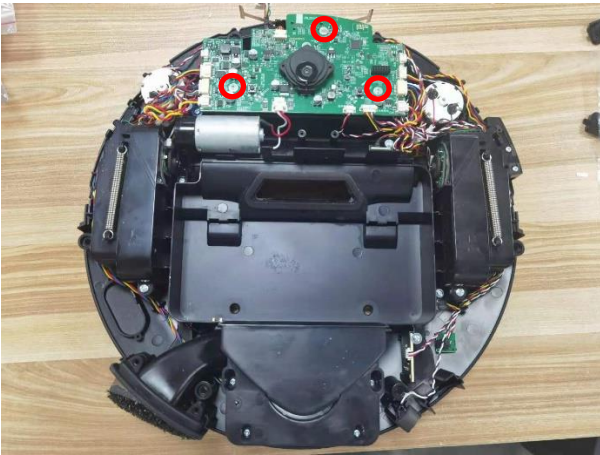
12. Remove the front bumper connector and remove the bumper assembly



13. Remove the six screws in the position shown and separate the rear cover and base assembly



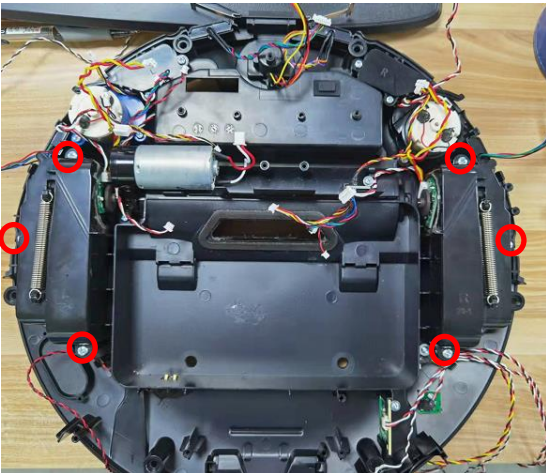
14. Unplug all the edges of the PCB board, take out the 3 screws shown in the picture, and remove the PCBA



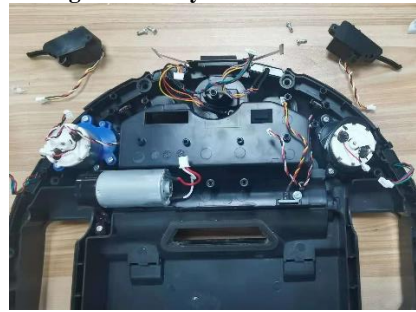
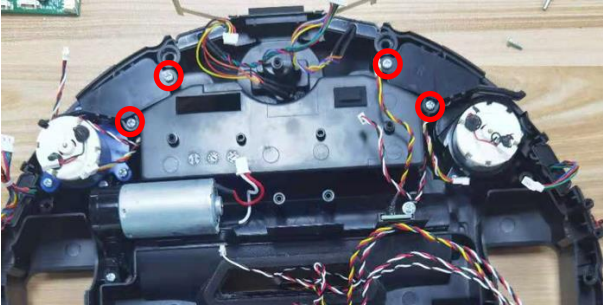
15. Remove 2 screws and remove the assemble



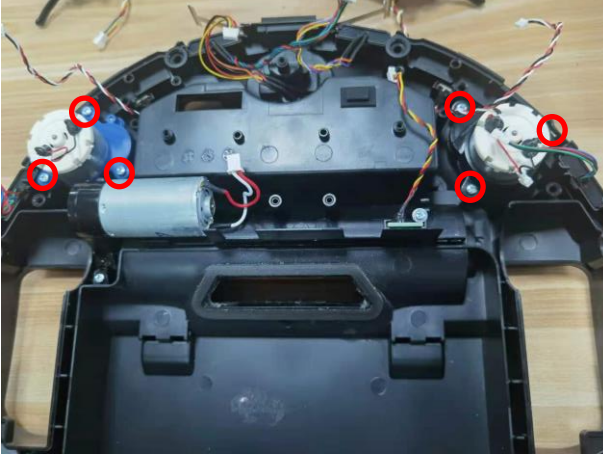
16. Unscrew the six screws and remove the left and right wheel assembly



17. Unscrew the 4 screws and remove the bumper switch left and bumper switch right assembly



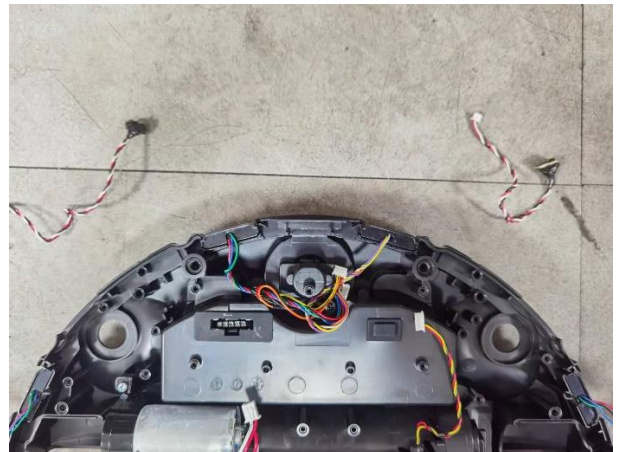
18. Unscrew the 6 screws and remove the side brush drive system left and side brush drive system right assembly



19. Tear off the rubber, and then remove the front impact shrapnel



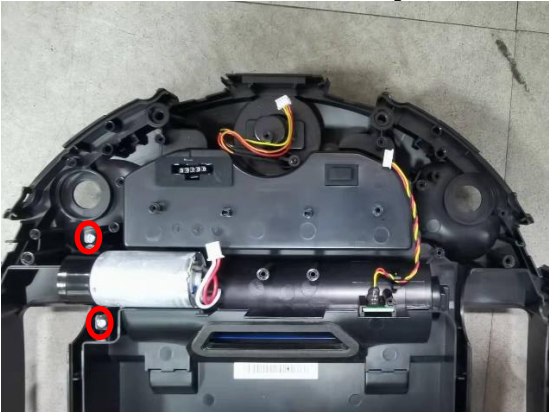
20. Pull out the geomagnetic component from bottom up



21. Pull out the cliff sensor right and the cliff sensor left assembly



22. Take out the 2 screws shown in the picture, take out the brush roll drive system



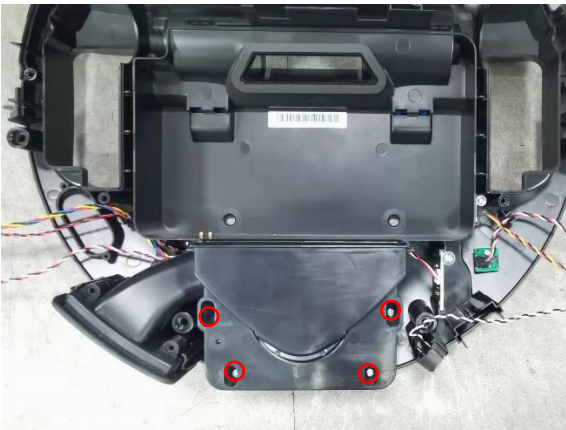
23. Take out the 2 screws shown in the picture, take out the infrared emitting bracket



24. Take out one screw shown in the picture, take out the dust box induction PCBA



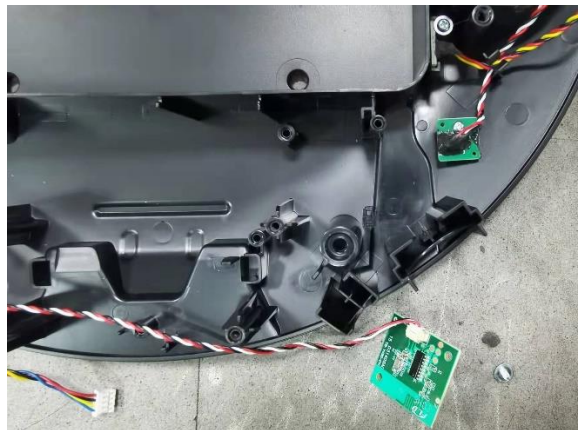
25. Unscrew the 4 screws shown and remove the main motor assembly



26. Remove the buzzer



27. Remove one screw, remote control PCB



28. Remove one screw, remove water tank induction PCB





**29. Remove one screw, remove mop induction PCB**



**30. Remove 2 screws, remove the button**



**MODELS INVOLVED:**

ER71UW1DG  
AR71UW1DG  
EFR51223

**REVISION:**

Revision	Date	Description	Author	Approved by - on
00	11/2021	Disassembly Instruction	Nicole Jiang	Nicole Jiang