



GAS SPRING BROKEN IN COOKER HOODS

DESCRIPTION:

Cooker Hood gas spring in area of glass is broken or not working smoothly.

REASON:

Internal damages on gas spring.

PRODUCTS AFFECTED:

All hoods belonged to the PNCs listed in below table can be affected.

PNC	Model denomination	Template Model	Brand	Factory ID
942051230	KFVB19K	Face Glow KR	Electrolux	ITB
942051234	EFV716K	Face Glow ER	Electrolux	ITB
942051236	LFV619K	Face Glass	Electrolux	ITB
942051237	LFV616K	Face Glass	Electrolux	ITB
942051241	LFV619Y	Face Glass	Electrolux	ITB
942051242	LFV616Y	Face Glass	Electrolux	ITB
942051243	LFV619W	Face Glass	Electrolux	ITB
942051244	LFV616W	Face Glass	Electrolux	ITB
942051295	JDWK907S0	Face Glass	JUNO	ITB
942051296	JDWK607S0	Face Glass	JUNO	ITB
942051298	PDV9175B	Face Glass	Progress	ITB
942051299	PDV6175B	Face Glass	Progress	ITB
942051304	DVK6981HR	Face Frame	AEG	ITB
942051305	DVK6981HB	Face Frame	AEG	ITB
942051307	DVE5971HG	Face Glam	AEG	ITB
942051308	DVE5971HB	Face Glam	AEG	ITB
942051309	DVE5671HG	Face Glam	AEG	ITB
942051323	DVK6981HB	Face Frame	AEG	ITB
942051325	DVE5971HG	Face Glam	AEG	ITB
942051326	DVE5671HG	Face Glam	AEG	ITB
942051332	GD5975V	Face Glam	AEG	ITB
942051333	DD5961V	Face Glam	AEG	ITB
942051334	GD5675V	Face Glam	AEG	ITB
942051335	DD5661V	Face Glam	AEG	ITB
942051347	ZFV919Y	Face Dynamo	Zanussi	ITB
942051348	ZFV919Y	Face Dynamo	Zanussi	ITB
942051349	FFV919Y	Face Dynamo	Faure	ITB
942051350	ZFV916Y	Face Dynamo	Zanussi	ITB
942051351	ZFV916Y	Face Dynamo	Zanussi	ITB
942051352	FFV916Y	Face Dynamo	Faure	ITB

942051367	DVK6981HR	Face Frame	AEG	ITB
942051383	LFV619R	Face Glass	Electrolux	ITB
942051400	DVS597AHG	Face Glam	AEG	ITB
942051401	DVS567AHG	Face Glam	AEG	ITB
942051402	LFV419K	Face Glass	Electrolux	ITB
942051403	LFV416K	Face Glass	Electrolux	ITB
942051407	DVK6981HB	Face Frame	AEG	ITB
942051411	LFV429Y	Face Glass	Electrolux	ITB
942051412	LFV429K	Face Glass	Electrolux	ITB
942051413	LFV426Y	Face Glass	Electrolux	ITB
942051414	LFV426K	Face Glass	Electrolux	ITB
942051418	DVK6981HR	Face Frame	AEG	ITB
942051419	DVK6981HB	Face Frame	AEG	ITB
942051420	DVK6981HB	Face Frame	AEG	ITB
942051421	DVK6981HR	Face Frame	AEG	ITB
942051422	DVE5971HG	Face Glam	AEG	ITB
942051423	DVE5971HB	Face Glam	AEG	ITB
942051424	DVE5671HG	Face Glam	AEG	ITB
942051425	DVE5971HG	Face Glam	AEG	ITB
942051426	DVE5671HG	Face Glam	AEG	ITB
942051427	GD5975V	Face Glam	AEG	ITB
942051428	DD5961V	Face Glam	AEG	ITB
942051429	GD5675V	Face Glam	AEG	ITB
942051430	DD5661V	Face Glam	AEG	ITB
942051431	DVS597AHG	Face Glam	AEG	ITB
942051432	DVS567AHG	Face Glam	AEG	ITB
942051433	MHV901SH	Face Glass	Miogo	ITB

SOLUTION:

When gas spring doesn't work properly must be exchange.

Follow steps listed below to provide this activity in safe conditions and without additional damages.

SPARE PART NUMBER:

2 01 19-98 / 8 - Spring, gas, grey.



It is highly recommended to provide gas spring exchange in two people – **IN EACH CASE GLASS MUST BE PROTECTED AGAINST FALLING.**



It is mandatory to wear anti-cut gloves and safety shoes.

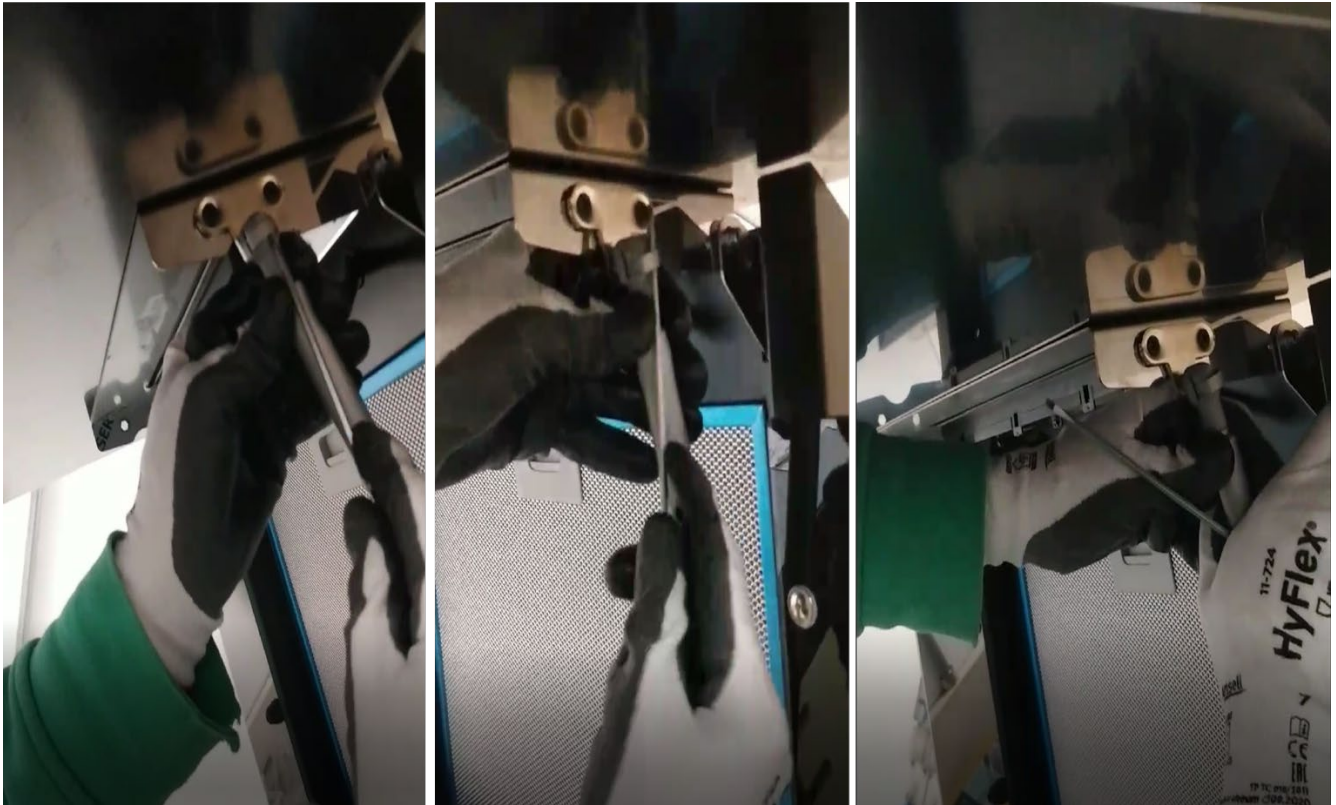


Follow the steps described below.

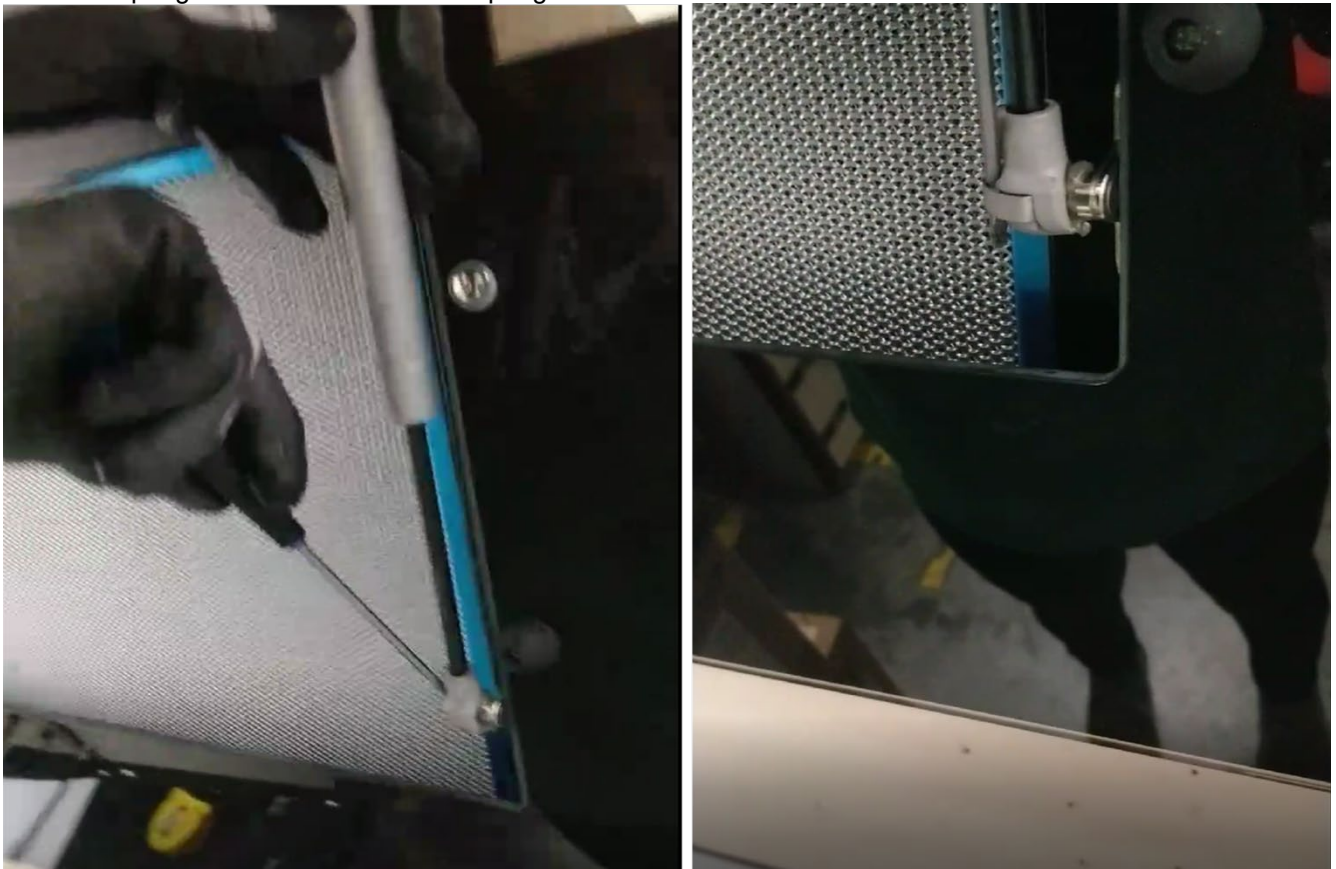
1. Open unit – Pull up glass. **MAKE SURE GLASS WILL NOT FALL DOWN. GLASS MUST STAY OPEN AND PROTECTED UP TO THE END OF REPAIR PROCESS.**



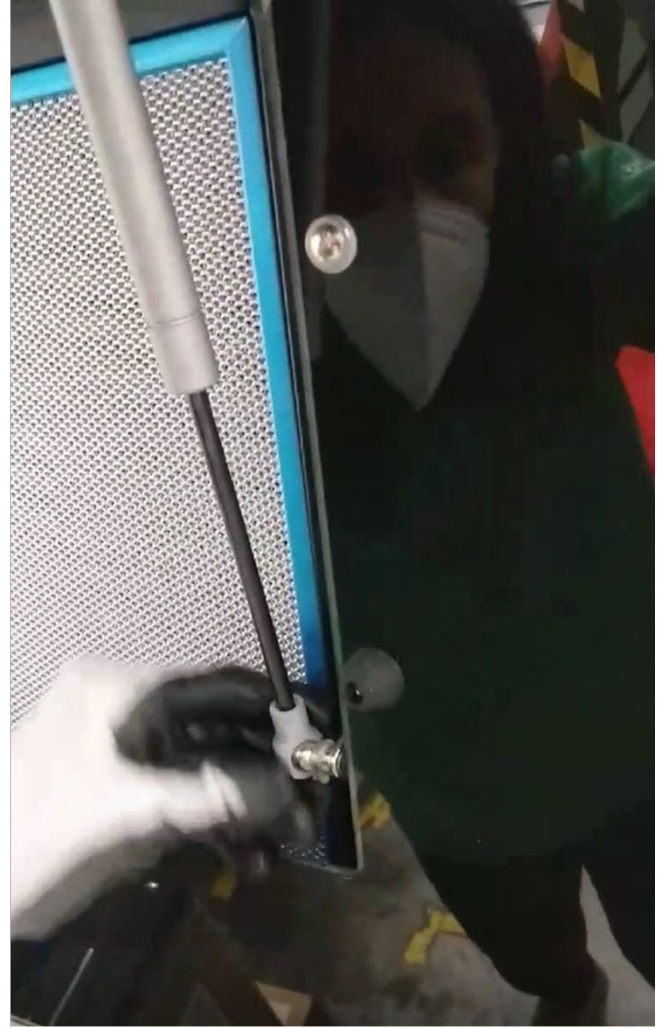
2. Insert a stiff, thin tool (it may be a screwdriver) into the gas spring lock on its top. Bend the spring lock back and slide the spring arm out.



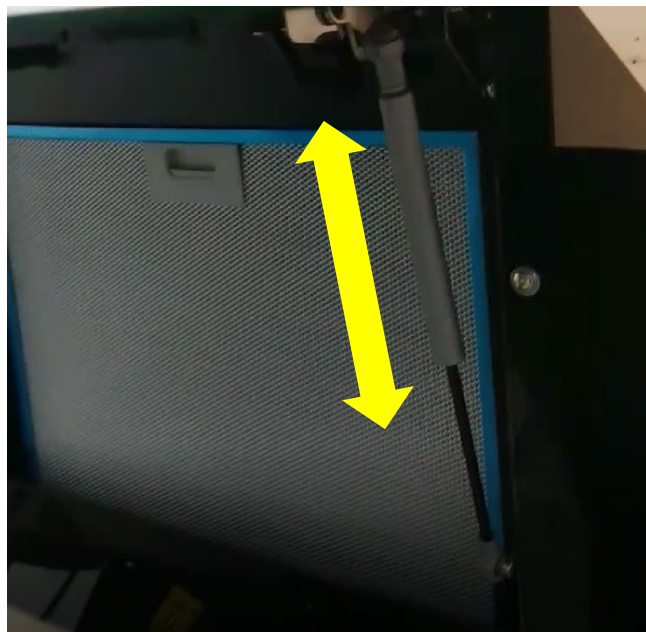
3. Insert a rigid thin tool (it may be a screwdriver) into the gas spring lock on its bottom. Bend the spring lock back and slide the spring arm out.



4. Apply and tighten the new spring starting from the top of the hood. Then repeat the operation at the bottom of the hood.



5. If unit is equipped in two springs, follow same steps at each side.
6. After placing springs check carefully if springs sit in place. Keep testing few (5-10 times). Close glass panel at the end.



REVISION:

Revision	Date	Description	Author / Edited	Approved by - on
00	11/21	Document Creation	Anna Niewlaczyn	Luca Lussana
01				