



Control board part modification

DESCRIPTION:

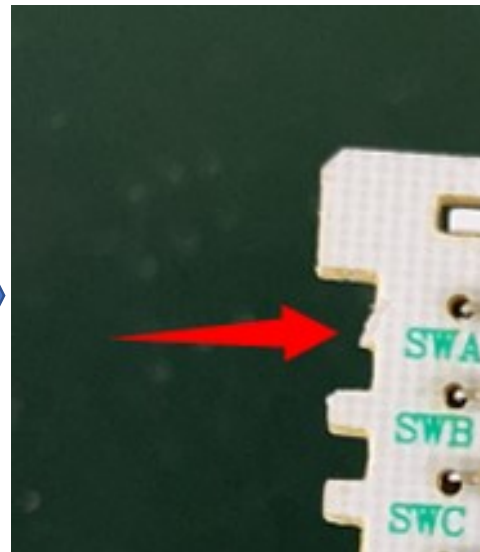
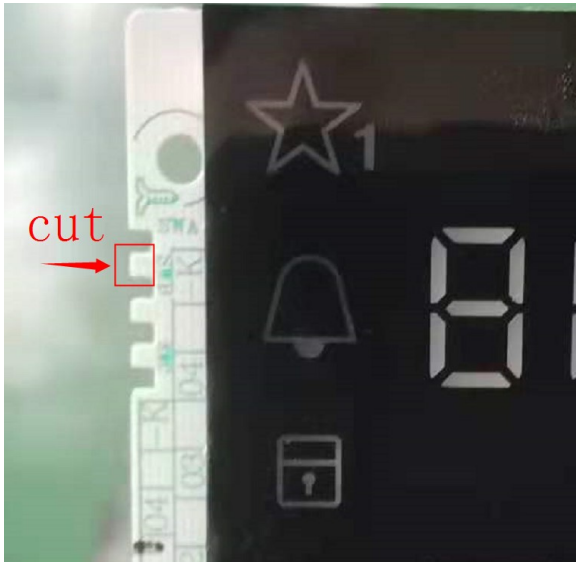
For the PNC **947607444**, replacement of the SWA **4055389029** may not be possible without modification for the current available factory part.

In the case part does not work properly please carefully remove the upper tooth from SWA according to procedure:



Remove the screen board, then the first protruding tooth of SWA needs to be cut off and then installed.

Cut like this way.
(This is another type of PCB board)

**REVISIONS:**

Revision	Date	Description	Author	Approved by - on
00	42/2021	Document Creation	Emilio Mariucci /Blanka Kucharska	B. Kucharska – Wk 42/2021