

INDUCTION HOB - E7 CLAIM FOR LIMITED BATCHES OF PRODUCTION

DESCRIPTION:

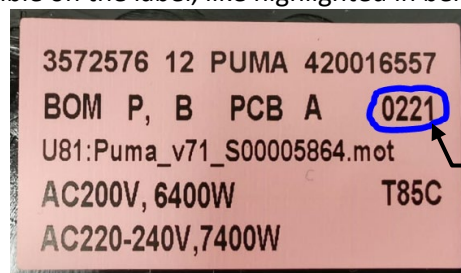
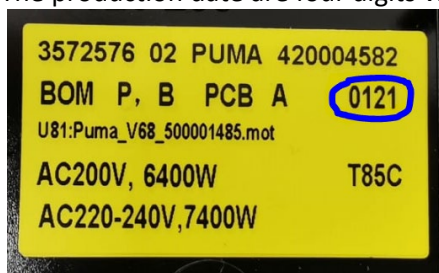
A limited quantity of BI HOBS Induction fitted with PUMA module may be claimed for error E7 also if the cooling fan is fine.

In the Puma batches listed below, has been mounted an alternative component that, under certain condition doesn't drive the cooling fan properly, causing E7 error code.

Puma boards affected by this issue:

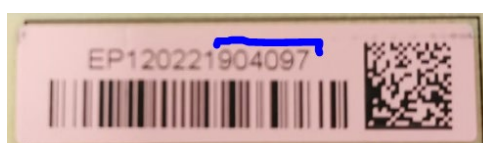
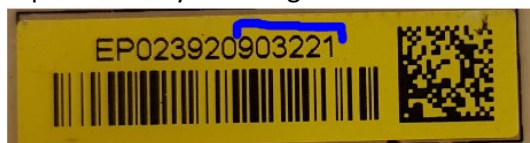
ELUX ANC of Puma board	TB ANC	Batch quantity	Production date/2020	Serial Number Start	Serial Number End
357 2576 02	420004582	8340	Week 23	900001	908340
357 2576 02	420004582	25	Week 32	900001	900025
357 2576 02	420004582	8390	Week 34	900001	908392
357 2576 02	420004582	4170	Week 35	900001	904170
357 2576 02	420004582	4170	Week 36	900001	904170
357 2576 02	420004582	4170	Week 38	900001	904170
357 2576 02	420004582	4170	Week 38	904180	908350
357 2576 02	420004582	4170	Week 39	900001	904170
357 2576 02	420004582	4170	Week 42	900001	904170
357 2576 12	420016557	1925	Week 27	900001	901925
357 2576 12	420016557	2000	Week 34	900001	902000
357 2576 12	420016557	1925	Week 36	900001	901925
357 2576 12	420016557	1925	Week 37	900001	901926
357 2576 12	420016557	1925	Week 38	900001	901925
357 2576 12	420016557	2000	Week 41	900001	902000
357 2576 12	420016557	3855	Week 44	900001	903855

The production date are four digits visible on the label, like highlighted in below examples:



Production date:
Week (two digits) / last
two digits of the year

The Serial number can be read on the barcode label from the board, like in example below – SN is represented by last 6 digits:



At Appendix A: how read serial number and data only removing the glass.

At appendix B: PNC / Models involved

SOLUTION:

In case of claim for error E7 that occurred on induction hob fitted with PUMA board, the service technician should follow the steps below:

Check the labels on the power board Puma – production date (week/year) and serial number

a) **If the Puma power board is listed in the above table**, the technician:

- must replace the power board;
- should check the good status of the Fan
 - i. If: there are no visual damage, the fan wings are free to rotate and the fan cable is well connected to power board -> not replace the cooling fan.
 - ii. If the cooling fan seems damage (or not works also after board replacement), please replace ALSO it.
- the Puma power board, removed from the hob, can be scrapped

b) **If the Puma power board is NOT listed in above table**, follow standard procedure:

1. Check if there is something in the plastic grid that blocks the fan;
2. If not, check if connector of fan cable is correctly in place;
3. If still not working, exchange cooling fan
4. If E7 appear anyway, exchange power board

Following spare part to be used.

SPARE PART NUMBER:

3572576209	Power board,induction,Puma (no housing) – to replace the faulty part 357257612
3572576027	Module,induction,Puma – to replace the faulty part 357257602
3572680019	Fan,induction,module,Puma,Panther,Leopard – in case the fan is damaged and need to be replaced

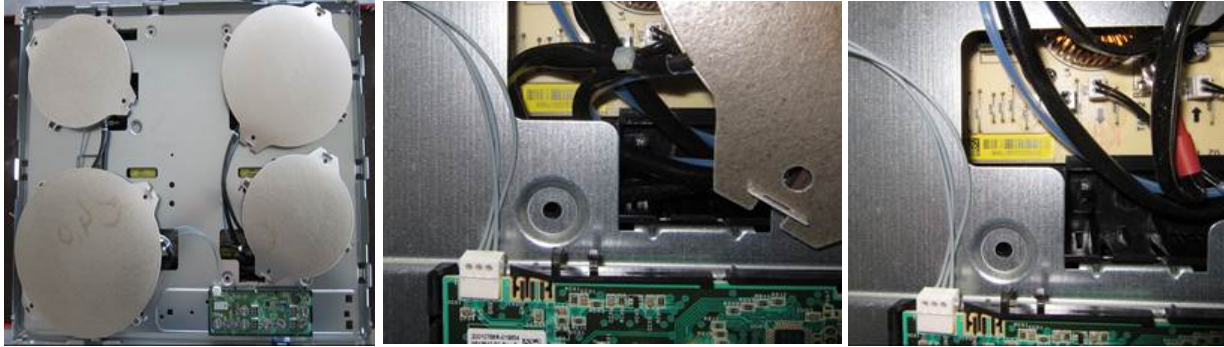
QES CODE:

During the intervention please use the following QES Code:

Component	D10 851 Induction module / unit, complete
Defect	D10 22 Electrical fault

APPENDIX A: How read serial number and data only removing the glass

- Without glass, you can see yellow or pink label. Remove the front coil to see the full Serial Number;



- Remove the rear right coil. With torch (or mobile phone) you can see the WW/YY production date;



APPENDIX B: PNC / Models involved

PNC	Model
949492073	ZEI6840FBA P60X60 AV.CZ
949492078	ZEI5680FB P60X60 AV.RU
949492081	KTI6430E P60X60 BF IT
949492083	E6203IOK P60X60 BF FR
949492085	HK604200IB P60X60 AEG IT
949492087	EHH6240ISK P60X60 BF PT
949492090	HK604200IB P60X60 AEG FI
949492091	HK604200IB P60X60 AEG FI
949492093	EHH56240IK P60X60 BF RU
949492094	EHH96240IK P60X60 BF RU
949492098	HOI620S P60X60 BF FISENO
949492099	HOI620S P60X60 BF FISENO
949492102	HKI62401CB P60X60 AEG BE
949492213	FEL6633FBA P60X60 AV.FR
949492273	IKE6420KB P60X60 BF RU
949492276	HK604200IB P60X60 AEG UK
949492316	HK604201CB P60X60 AEG NO
949492335	ZIB6460XB P60X60
949492336	ZIB6460CB P60X60
949492339	HK604200CB P60X60 AEG
949492354	HD604200CB P60X60 AEG
949492355	EIT60420C P60X60 ELUX

PNC	Model
949492356	LIT60320C P60X60 FR
949492358	ZSK6540CB P60X60 AV.NL,FR
949492367	HOI625X P60X60 BF FISENO
949492368	ZEI6840FBV P60X60 ZAN
949492370	EIT60428C P60X60 BF CEE
949492371	EIT60420C P60X60 ELUX
949492372	ZEI6840XBV P60X60 ZAN
949492383	ZITN641K P60X60 AV.UK
949492389	GRUNDAD
949492391	GRUNDAD IT
949492411	FITN641K P60X60 AV.FR
949492417	ZITN641K P60X60 AV.INT.
949492421	ZITS641K P60X60 AV.BENEL.
949492441	ZITN632K P60X60
949492442	FITN632K P60X60
949492446	IDZ642WC P60X60 AV.RU
949492447	GRUNDAD AU
949492451	GRUNDAD RU
949492458	IKB6430AMB P60X60
949492459	ZITN646K P60X60 AV.UK
949492464	LIT60428C P60X60 BF TR
949492468	LAM1803 P60X60
949492471	EIR60420CK P60X60 IT
949492476	HK604201CB P60X60
949492479	HOI620S P60X60
949492480	HOI622S P60X60
949492481	HK604200IB P60X60
949492483	KIR6042K P60X60 IT

REVISION:

Revision	Date	Description	Author	Approved by - on
00	05/2021	Document Creation	Gabriela Marginean, Michela Nuzziello, Ulrich Hautle	R&D Induction Domain, Satu Mare Quality