

HOOD - FRAME FALLING

DESCRIPTION:

Frame of Cooker Hood is falling down.

REASON:

Improper placed frame during installation (example A, example B) of product or after cleaning of appliance.

Example A: Housing located outside of frame



Example B: Loose frame, sliders not closed on support bracket.



PRODUCTS AFFECTED:

All hoods belonged to the PNCs listed in below table ever produced.

PNC	Model denomination	Template Model	Brand	Factory ID
942022065	DGB3850M	GARDA	AEG	PLB
942022067	DGB3850M	GARDA	AEG	PLB

SOLUTION:

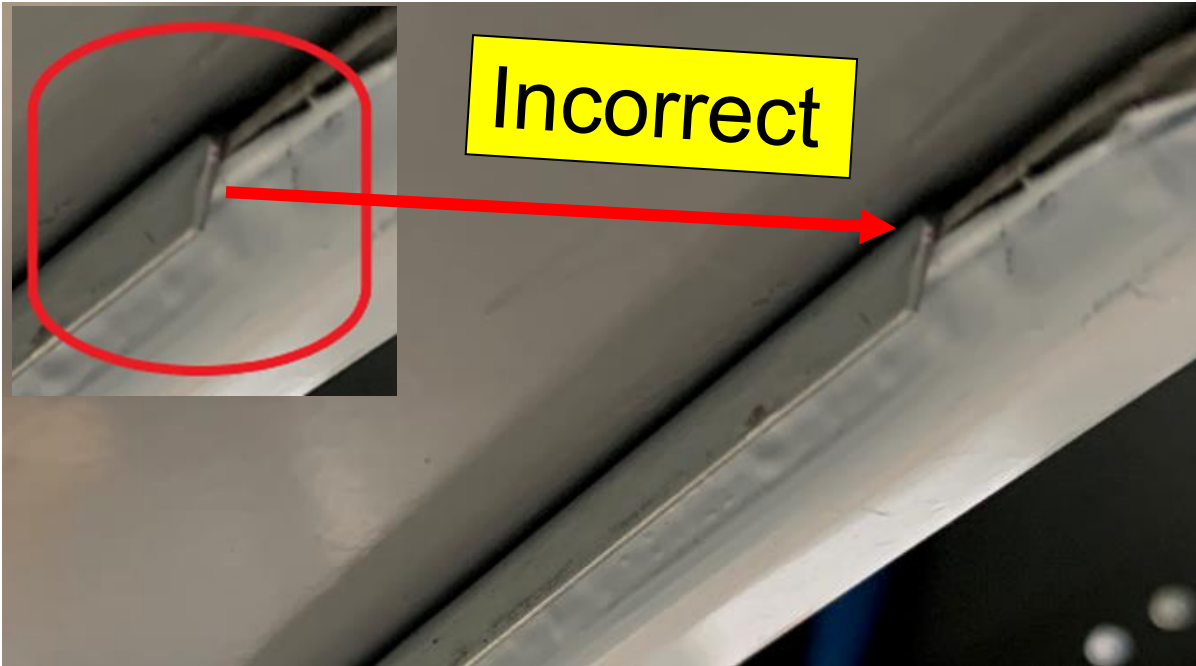
Proper installation of product. For more info: <https://youtu.be/tKchQDCoJ7Y>
Or search for video:



- Proper installation of product step by step:
- 1) Remove protective film from all areas of inox steel frame
 - 2) Align frame with housing and tighten sliders.



3) Check if all housing edges are hidden under frame:
Below example of improper position of frame:



Below example of proper position of frame:



SPARE PART NUMBER:

After proper installation of product no spares required.

REVISION:

Revision	Date	Description	Author / Edited	Approved by - on
00	31.03.2021	Document Creation	Anna Niewlaczyn	Marcin Bernacki