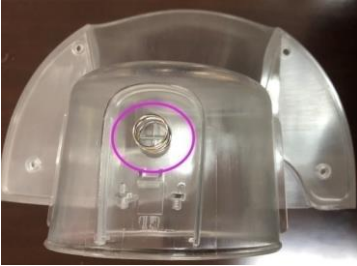


Assembly Instruction for Odin

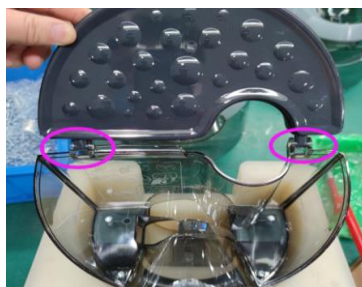
1. put the spring and button in the place as shown and press the release button



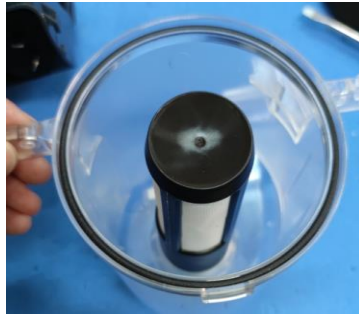
2. Assemble the handle and handle grip and put it in the dust bin, then fix with 4pcs screw



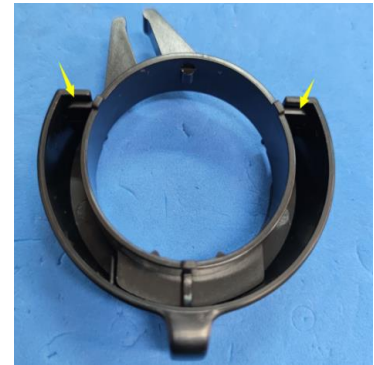
3. Put the sealing into lid, fix the spring as below and assemble the catch into lid, put the lid into dust bin



4. Put the sealing into cyclone, put the nose cone into cyclone, pay attention to the slot position



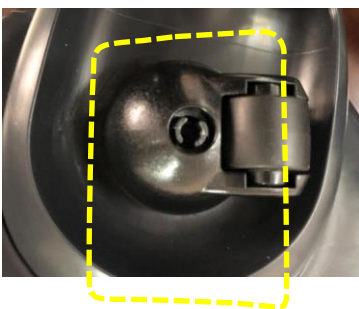
5. Put the sealing into air channel, assembly outer and inner knob



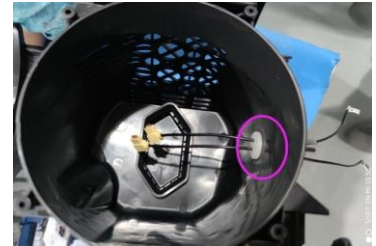
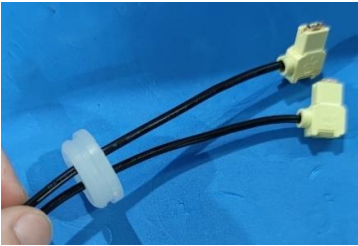
6. Put the Knob into cyclone



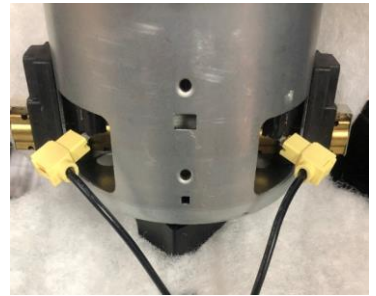
7. Assemble the front wheel holder into base, press the front wheel into holder and assemble it into base, put sealing into base groove



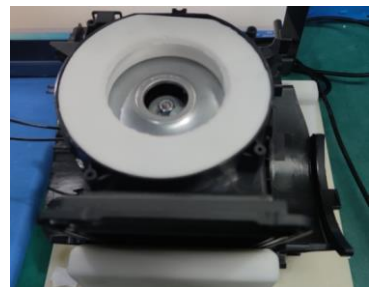
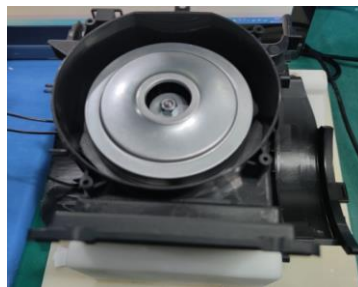
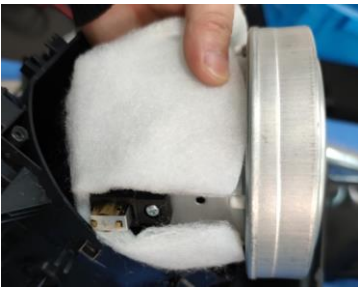
8. Fix the wire into grommet and install grommet into motor housing, the large diameter faces inward



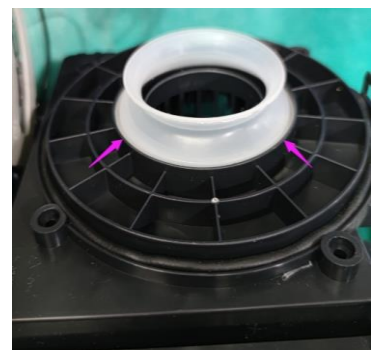
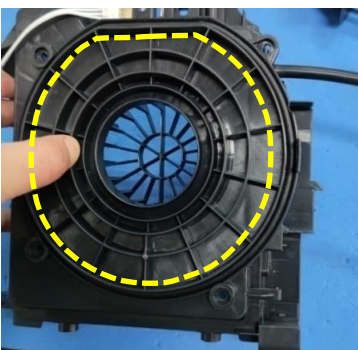
9. Install suspension block, diffusor and motor wire into motor as picture shown



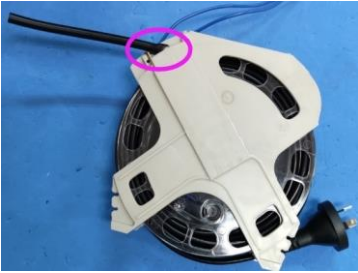
10. Diffusor wrap the motor and put it into motor housing, then install suspension ring



11. Put the sealing and bellow into motor housing rear



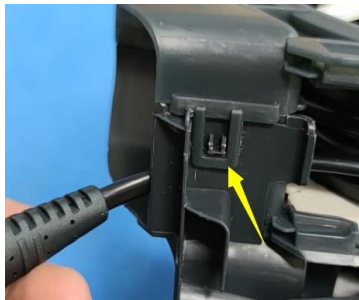
12. Insert the coolantube into CW as shown



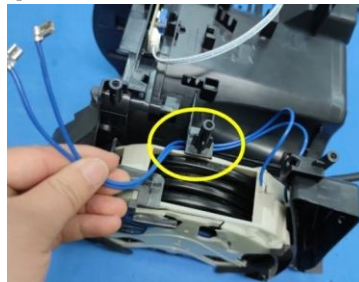
13. Install the CW bracket and notice the clip position



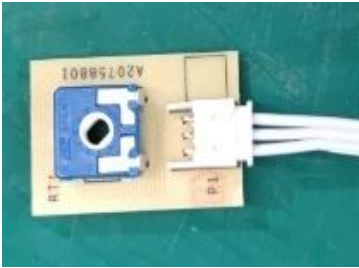
14. Assembly CW into motor housing rear and press the clip, fix with screw



15. Assemble CW/motor housing rear with motor housing front and pull out the wire from bracket, keep the clip in position, fix it with 4pcs screw



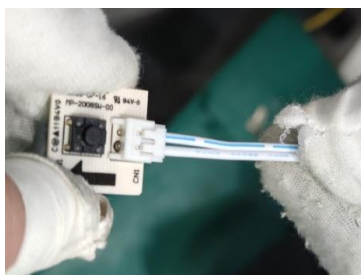
16. Insert the Wire potentiometer into PCBA Potentiometer and fix pcba into motor housing



17. Insert the knob pin into the hole of PCBA



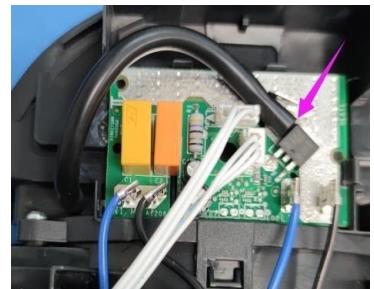
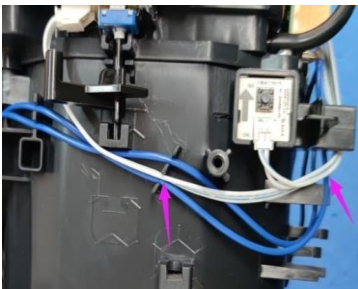
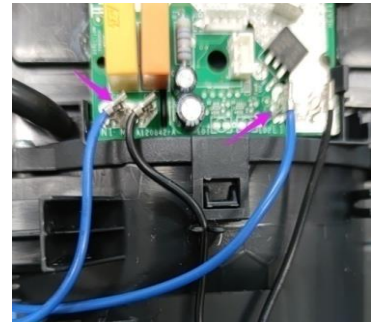
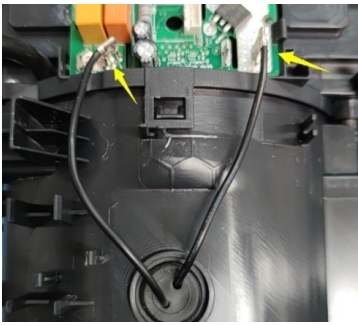
18. Insert the wire into on/off switch PCBA and fix it in motor housing



19. Install the main pcba into base and fix the clip angle, insert the wire of potentiometer and on/off switch into mani pcba



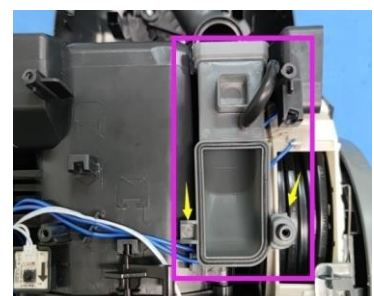
20. Insert motor and CW wire into main PCBA, fix the wire with slot, insert cooltube as picture shown



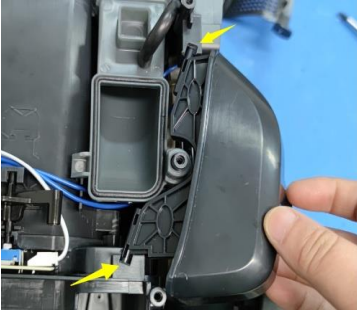
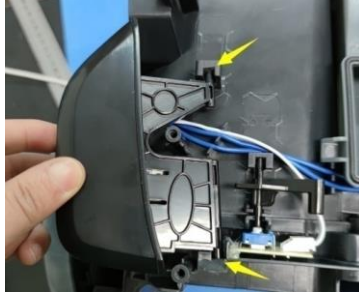
21. Insert the sealing into motor housing



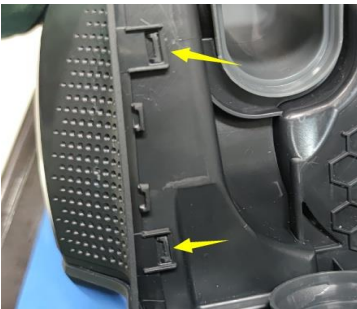
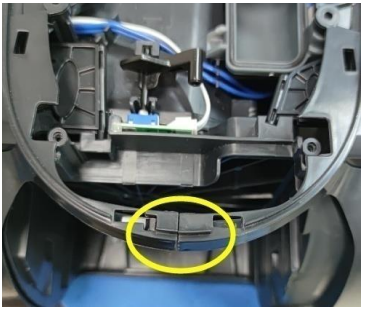
22. Insert sealing and cooltube into air channel, assemble air channel into base as picture shown



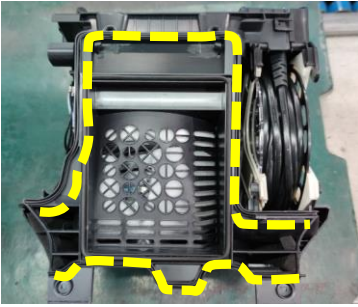
23. Fix spring on pedal on/off and pedal CW, assemble it with base



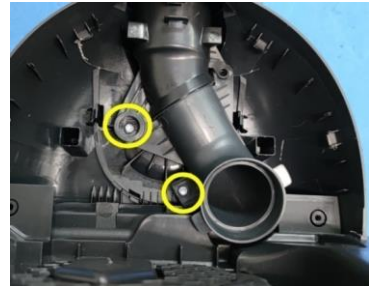
24. Assemble the absorbent and cover left/ right, fix slot as picture shown



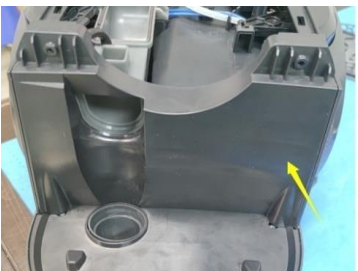
25. Insert sealing as picture shown



26. Install the motor housing assy into base, check all sides are located in position, fix with 2 pcs screws



27. Assemble cover front and under into base and make sure slot in place, fix with 2pcs screws



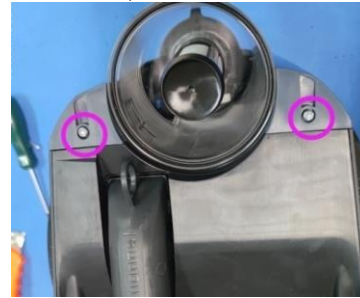
28. Put the sealing into air channel and insert air channel into base



29. Install the cyclone assy into base and fix with 6pcs screw



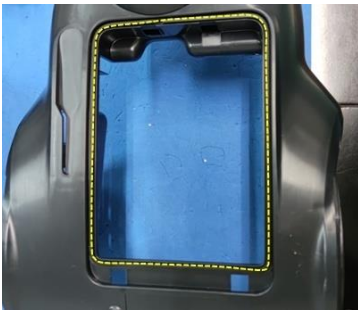
30. Assemble the cover top and fix 2pcs screws, insert cover and make sure slot in place



31. Insert button into lid, fix spring into cover and fix cover into lid with 2pcs screws



32. Check sealing and insert the HEPA into base, install lid



33. Assemble filter lid inner and outer, make sure slot in place



34. Put filter assembly into lid and install lid assembly and container into base,



35. Press wheel into base



MODELS INVOLVED:

WEC61-XXX
WEC71-XXX
LX82-1-XXX

REVISION:

Revision	Date	Description	Author	Approved by - on
00	3/2021	Disassembly Instruction	Rachel Jiang	Nicole Jiang