



### Disassembly Instruction for Odin

1. Remove the filter from the body



2. Remove the lid and the HEPA



3. Remove the dust cup part



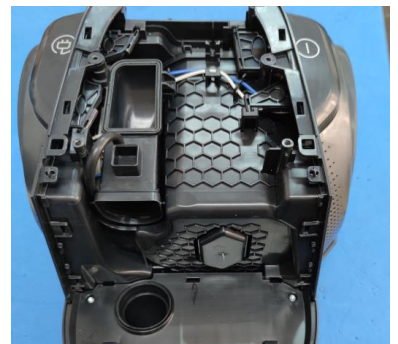
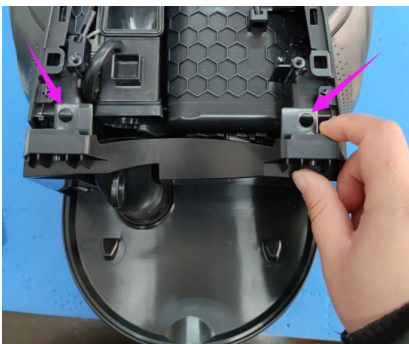
**4. Remove the cover top with 2pcs screws**



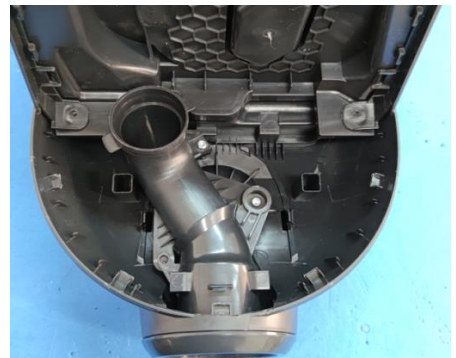
**5. Remove the Cyclone part with 6pcs screws**



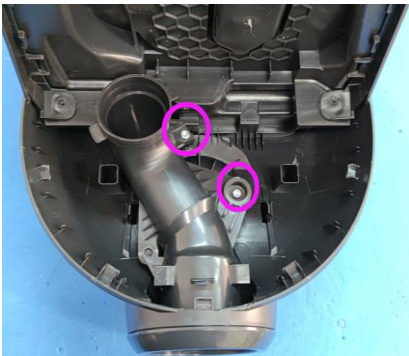
**6. Remove the cover front and the air channel**



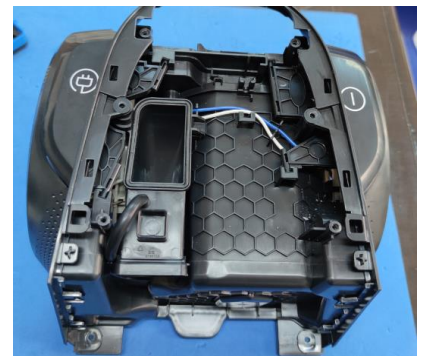
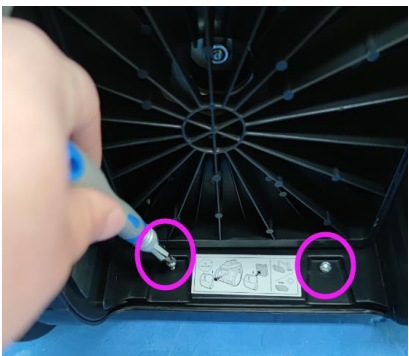
**7. Remove the cover under with screw, then using the tools to disassemble the cover**



8. Remove the air chanel with 2pcs screws



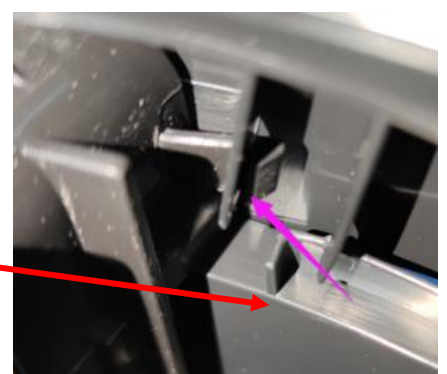
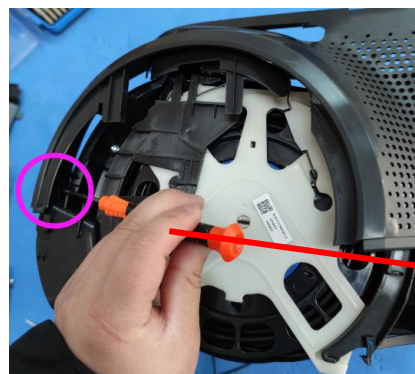
9. Take the base away with 2 screws



10. Remove the wheels from the base, please note the wheel will be scrapped after disassemble



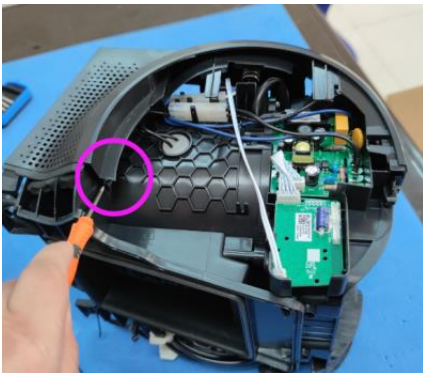
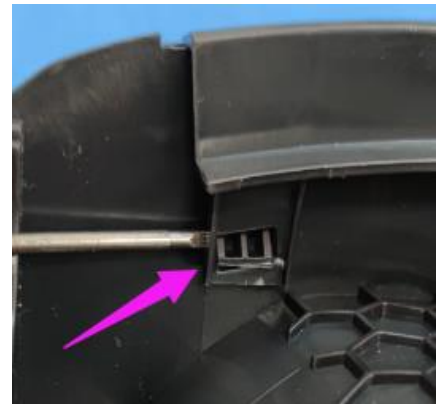
11. Use the flat head driver to remove the clip of left cover



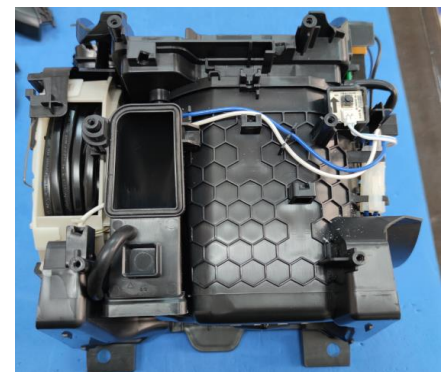
12. Use te flat head driver to remove the clip of the connecting parts at left cover and rught cover, then take away the left cover.



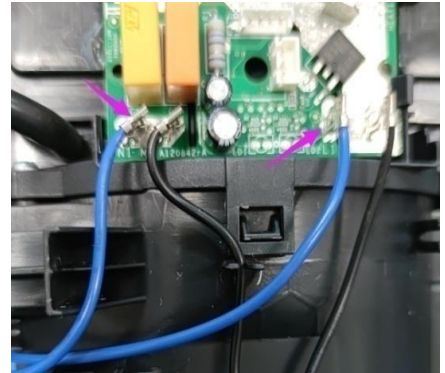
13. Use the flat driver to remove the clip and right cover



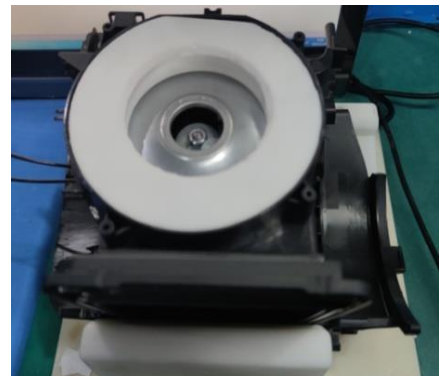
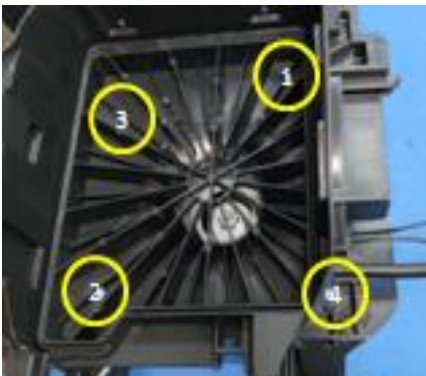
14. Remove the pedal on/off and pedal CW



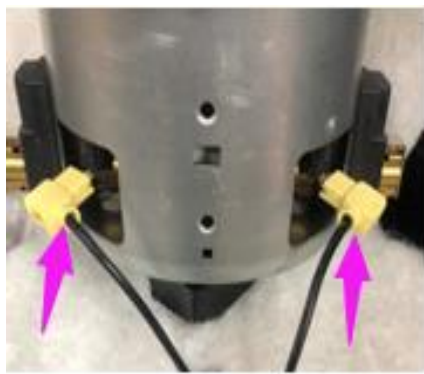
**15. Remove the wire terminal**



**16. remove the 4 screw of motor housing and clip, the take away the motor housing rear and CW assembly**



**17. Remove the wire and take out motor**



**MODELS INVOLVED:**

WEC61-XXX  
 WEC71-XXX  
 LX82-1-XXX

**REVISION:**

| Revision | Date   | Description             | Author       | Approved by - on |
|----------|--------|-------------------------|--------------|------------------|
| 00       | 3/2021 | Disassembly Instruction | Rachel Jiang |                  |