

**DRYER DOES NOT HEAT - E60 ALARM****DESCRIPTION:**

Condense dryer does not heat – heater’s thermo-protector activated.

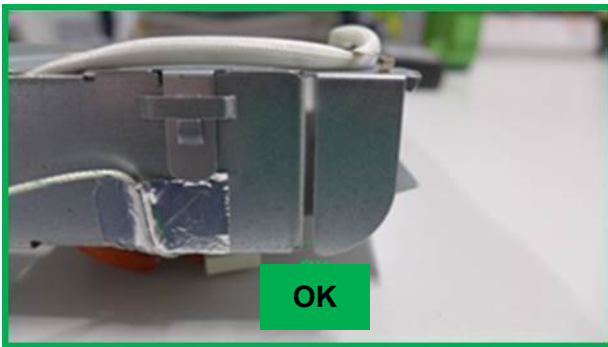
- Alarm reported on user interface: E60
- Alarm in the PCB memory: E63

**SOLUTION:**

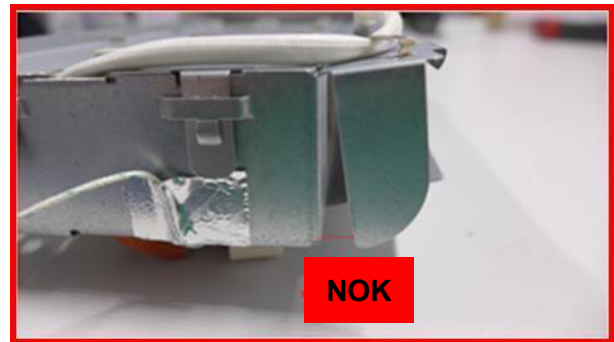
Replace the heater.

During service intervention a special care is requested to the assembly process

1. Verify if the wing of the spare heater is not bent.

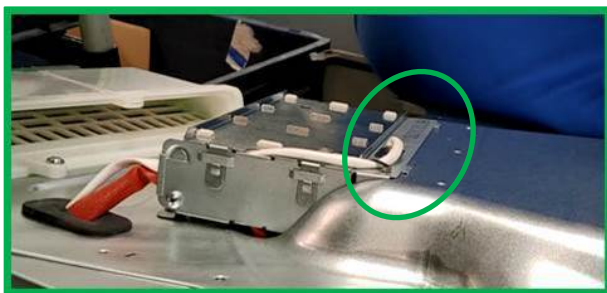


Heater wing position OK

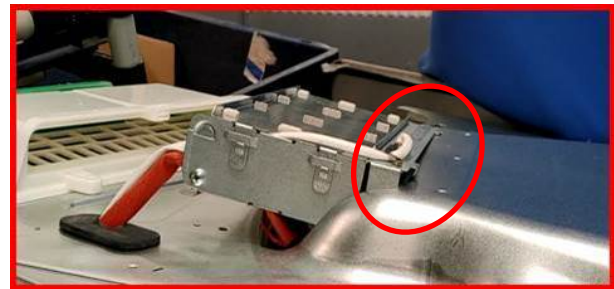


Heater wing position NOK

2. During assembly of the heater to the back panel check if the heater’s hook is fixed correctly.  
Start the heater’s installation from putting the cable through the back panel.  
Make sure that after installation, the cable (which is stiff) does not push the heater

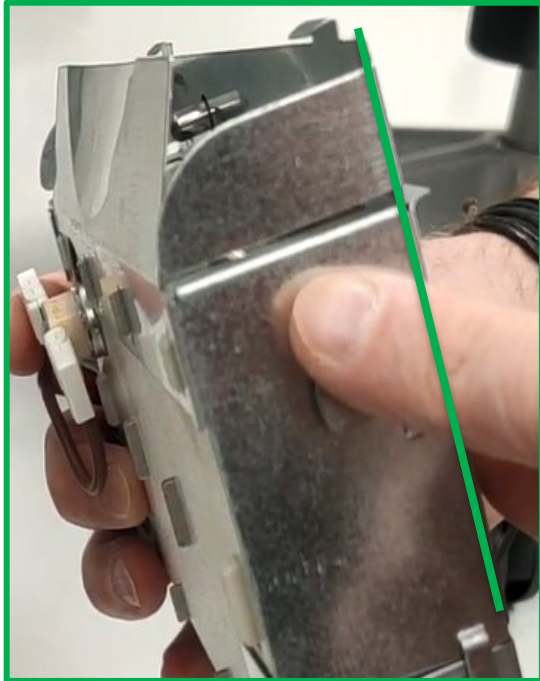


Heater hook position OK



Heater hook position NOK

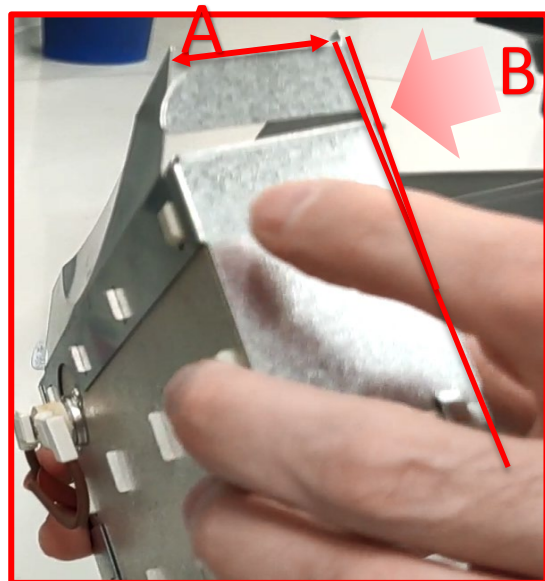
3. Pay attention not to bend the temperature probe support during assembly



New component OK



Too much pressure on assembly create deformation



Component damage  
a. distance increase  
b. missing parallelism

**SPARE PART NUMBER:**

See TDS

**QES CODE:**

During the intervention please use work code:

Component	G45 611 Heating element
Defect	G45 22 Electrical fault

In the section for Tech. Comments start the description with the following:

**[E??,E??,E??] SB599838239**[E??,E??,E??] – stands for the last 3 alarms read from the memory in the 10<sup>th</sup> position of the service mode**MODELS INVOLVED:**

All condense dryers (TDC)

**INTERCHANGEABILITY:**

Not applicable

**REVISION:**

Revision	Date	Description	Author	Approved by - on
00	07/2020	Document Creation	Marcin Pluta	Marek Kapustka 13.07.2020