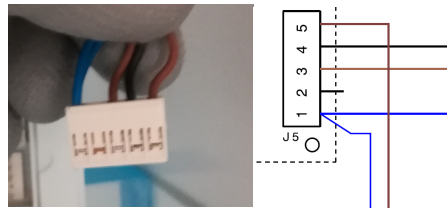


No power supply or compressor or defrost not working

DESCRIPTION:

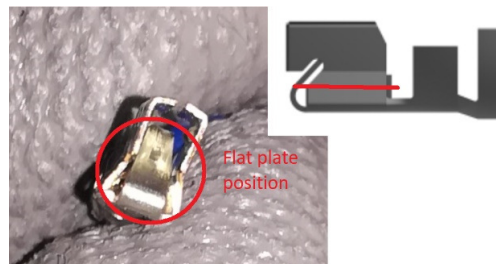
The problem is linked to the foamed cable J5 plastic connector (connection between foamed cable and control panel) at ERF501L and ERF 502L controls and it can cause the **compressor not to work, the defrost not to work or no power supply.**



wires of metal connectors / crimps:



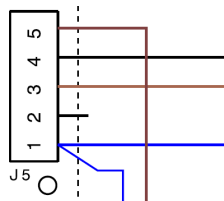
Gap between metal connector on the top surface



Flat plate position at metal connector

If the problem is present, then can generate the following defects:

- if the problem is linked to wire 1 (blue) and, or wire 3 (brown), then product has **no power supply**, so the lamp, compressor and all the electrical components do not work,
- if the problem is linked to wire 4 (black), then the **compressor do not work**
- if the problem is linked to wire 5 (brown), then the **defrost do not work.**



SOLUTION:

Repair the metal connectors (crimps) of wires will solve the power supply, defrost and compressor problem.

Follow the below instructions to repair the foamed cable:

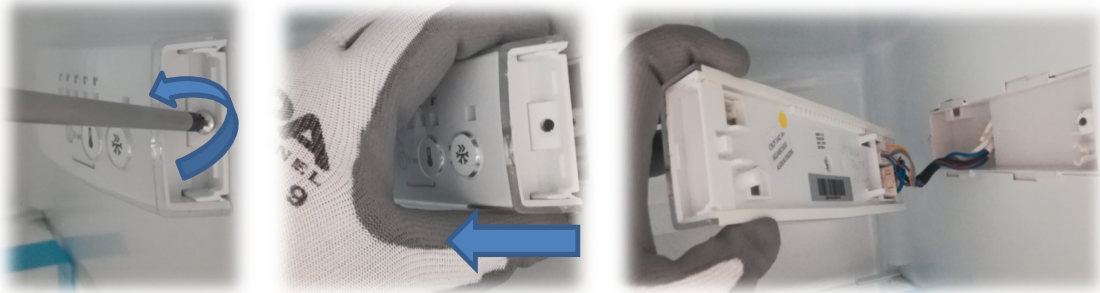
1. Take out the power cable from network



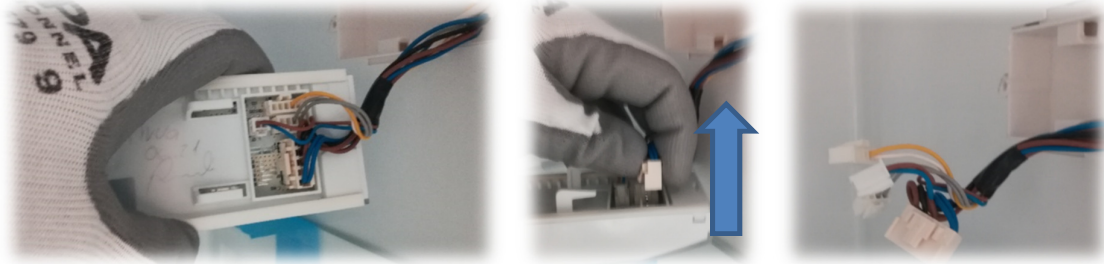
2. Open the fridge door and eliminate the plastic cover of control by screwdriver



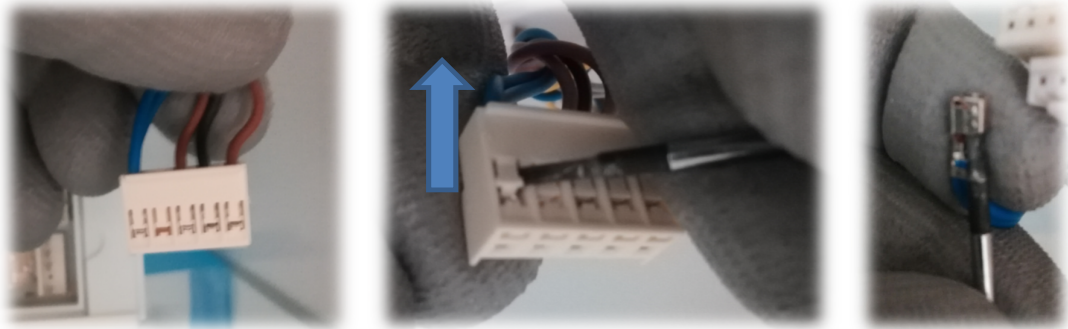
3. Screw out control panel by screwdriver and disassemble the control panel



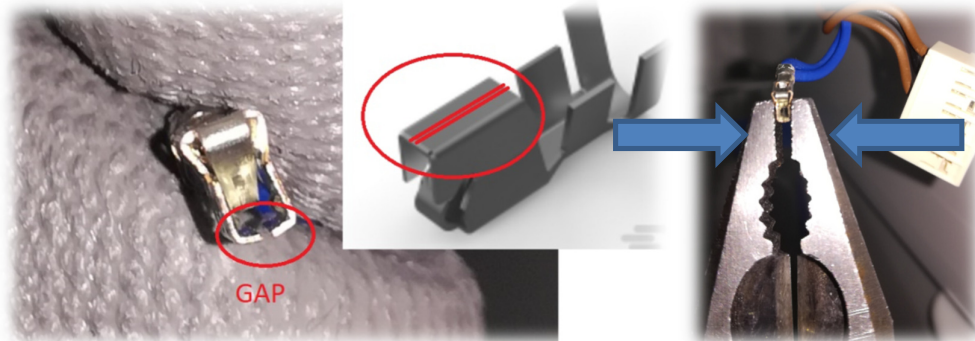
4. Disconnect plastic connectors from control panel



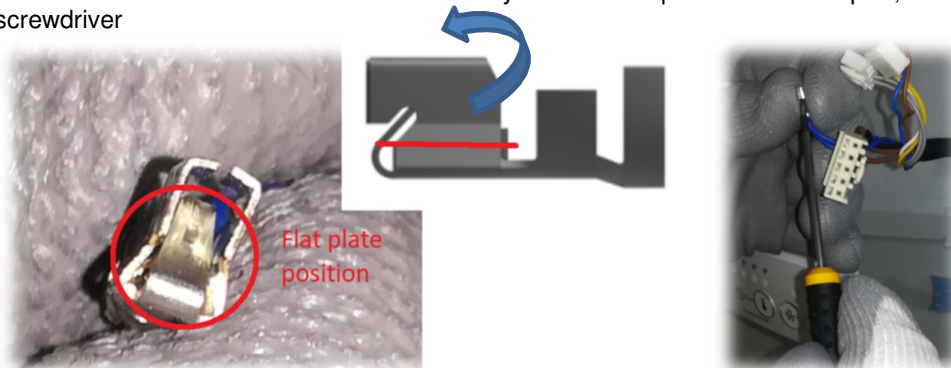
5. Take the J5 plastic connector and disconnect metal connector at wire 1 (blue) by screwdriver



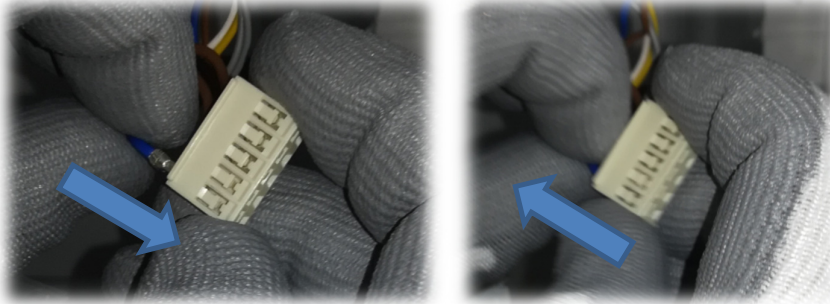
6. Check the condition of metal connector and if you found gap between metal connector on the top surface, then fix it by pliers



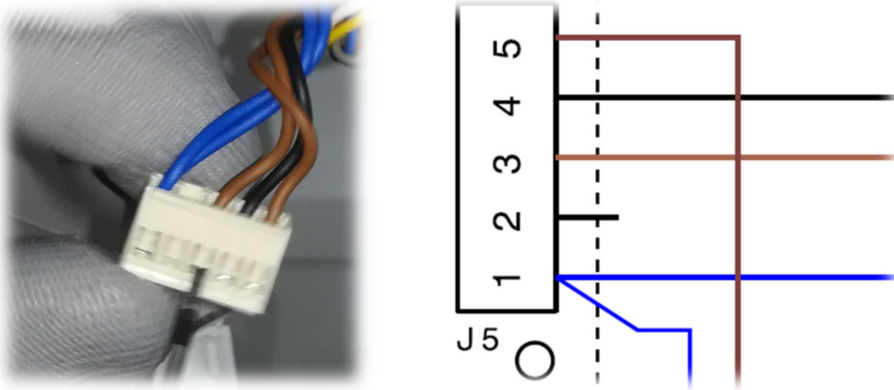
7. Check the condition of metal connector and if you found flat position at metal part, then fix it by screwdriver



8. Take back the metal connector in correct position of housing. Insert the metal connector into the housing until it clicks and check the proper position by pulling.



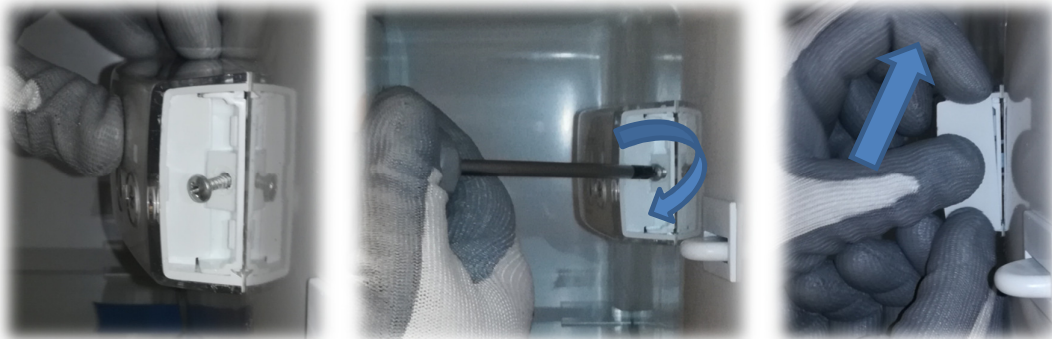
9. Check the condition of the other wires (browns and black) on J5 plastic connector (repetition of process from step 5 till step 8). Double check that all of wires in correct position according to the drawing.



10. Connect the plastic connectors and take back the control panel



11. Take back the screw and fix it by screwdriver. Take back the plastic cover and push until it clicks



SPARE PART NUMBER:

No spare parts

QES CODE:

Use the following QES Codes when reporting the Service Order:

C10 604 Wiring

EN	Publication Number	599 83 59 - 11	Rev. 00	03/2020	Q&CI-TS RA
----	--------------------	----------------	---------	---------	------------

Affected PNCs:

PNC	Base model	PNC	Base model	PNC	Base model
925 054 009	CBZF310	925 054 326	CBZF340	925 054 524	CBZF340
925 054 023	CBZF310	925 054 327	CBZF340	925 054 525	CBZF340
925 054 024	CBZF310	925 054 328	CBZF340	925 054 526	CBZF340
925 054 029	CBZF310	925 054 339	CBZF340	925 054 528	CBZF340
925 054 031	CBZF310	925 054 349	CBZF340	925 054 529	CBZF340
925 054 203	CBZF340	925 054 351	CBZF340	925 054 530	CBZF340
925 054 204	CBZF340	925 054 352	CBZF340	925 054 531	CBZF340
925 054 206	CBZF340	925 054 353	CBZF340	925 054 532	CBZF340
925 054 207	CBZF340	925 054 356	CBZF340	925 054 533	CBZF340
925 054 208	CBZF340	925 054 360	CBZF340	925 054 534	CBZF340
925 054 209	CBZF340	925 054 364	CBZF340	925 054 535	CBZF340
925 054 214	CBZF340	925 054 378	CBZF340	925 054 536	CBZF340
925 054 217	CBZF340	925 054 379	CBZF340	925 054 537	CBZF340
925 054 218	CBZF340	925 054 380	CBZF340	925 054 538	CBZF340
925 054 219	CBZF340	925 054 381	CBZF340	925 054 539	CBZF340
925 054 221	CBZF340	925 054 382	CBZF340	925 054 540	CBZF340
925 054 227	CBZF340	925 054 386	CBZF340	925 054 546	CBZF340
925 054 228	CBZF340	925 054 389	CBZF340	925 054 547	CBZF340
925 054 242	CBZF340	925 054 391	CBZF340	925 054 801	CBZF340
925 054 243	CBZF340	925 054 392	CBZF340	925 054 417	CBZF345
925 054 246	CBZF340	925 054 393	CBZF340	925 054 418	CBZF345
925 054 252	CBZF340	925 054 399	CBZF340	925 054 425	CBZF345
925 054 253	CBZF340	925 054 500	CBZF340	925 054 426	CBZF345
925 054 254	CBZF340	925 054 501	CBZF340	925 054 429	CBZF345
925 054 255	CBZF340	925 054 502	CBZF340	925 054 439	CBZF345
925 054 256	CBZF340	925 054 503	CBZF340	925 054 440	CBZF345
925 054 257	CBZF340	925 054 504	CBZF340	925 054 443	CBZF345
925 054 264	CBZF340	925 054 509	CBZF340	925 054 444	CBZF345
925 054 265	CBZF340	925 054 510	CBZF340	925 054 603	CBZF380
925 054 294	CBZF340	925 054 511	CBZF340	925 054 609	CBZF380
925 054 295	CBZF340	925 054 512	CBZF340	925 054 616	CBZF380
925 054 297	CBZF340	925 054 513	CBZF340	925 054 619	CBZF380
925 054 298	CBZF340	925 054 514	CBZF340	925 054 621	CBZF380
925 054 299	CBZF340	925 054 515	CBZF340	925 054 629	CBZF380
925 054 302	CBZF340	925 054 516	CBZF340	925 054 630	CBZF380
925 054 304	CBZF340	925 054 517	CBZF340	925 054 635	CBZF380
925 054 306	CBZF340	925 054 518	CBZF340	925 054 636	CBZF380
925 054 307	CBZF340	925 054 519	CBZF340	925 054 637	CBZF380
925 054 308	CBZF340	925 054 520	CBZF340	925 054 640	CBZF380
925 054 309	CBZF340	925 054 521	CBZF340	925 054 641	CBZF380
925 054 321	CBZF340	925 054 522	CBZF340	925 054 642	CBZF380
925 054 325	CBZF340	925 054 523	CBZF340	925 054 645	CBZF380

PNC	Base model	PNC	Base model
925 054 648	CBZF380	925 054 738	CBZF380
925 054 659	CBZF380	925 054 740	CBZF380
925 054 666	CBZF380	925 054 741	CBZF380
925 054 669	CBZF380	925 054 742	CBZF380
925 054 670	CBZF380	925 054 743	CBZF380
925 054 672	CBZF380	925 054 744	CBZF380
925 054 676	CBZF380	925 041 700	RF330
925 054 677	CBZF380	925 041 712	RF330
925 054 681	CBZF380	925 041 717	RF330
925 054 691	CBZF380	925 041 760	RF330
925 054 694	CBZF380	925 041 763	RF330
925 054 695	CBZF380	925 041 766	RF330
925 054 696	CBZF380	925 041 767	RF330
925 054 697	CBZF380	925 041 771	RF330
925 054 701	CBZF380	925 041 772	RF330
925 054 703	CBZF380	925 041 773	RF330
925 054 710	CBZF380	925 041 777	RF330
925 054 712	CBZF380	925 041 778	RF330
925 054 715	CBZF380	925 041 779	RF330
925 054 717	CBZF380	925 041 781	RF330
925 054 718	CBZF380	925 041 782	RF330
925 054 719	CBZF380	925 041 783	RF330
925 054 722	CBZF380	925 041 784	RF330
925 054 723	CBZF380	925 041 786	RF330
925 054 727	CBZF380	925 070 403	RF360
925 054 728	CBZF380	925 070 404	RF360
925 054 729	CBZF380	925 070 406	RF360
925 054 730	CBZF380	925 070 407	RF360
925 054 731	CBZF380	925 070 408	RF360
925 054 732	CBZF380	925 070 409	RF360
925 054 734	CBZF380	925 070 414	RF360
925 054 735	CBZF380	925 070 415	RF360
925 054 736	CBZF380	925 070 417	RF360
925 054 737	CBZF380	925 070 418	RF360

REVISION:

Revision	Date	Description	Author	Approved by - on
00	03/2020	Document Creation	Rui Almeida / Lajos Tóth	Lajos Tóth