



**Electrolux**

# SERVICE MANUAL

## Food preservation

COLD APPLIANCES WITH ELECTRONIC  
CONTROL SYSTEM

ERF2010



EN

Publication number  
599 83 48 87  
Edition: 01/2020 - Rev. 00

FOR INTERNAL AND PARTNERS USE ONLY

© ELECTROLUX HOME PRODUCTS  
Consumer Service - EMEA  
Quality & Continuous Improvement - Technical Support

## PURPOSE OF THIS MANUAL

The purpose of this Service Manual is to provide Service Engineers who are already familiar with repair procedures with information regarding the PCB.

### Document Revisions

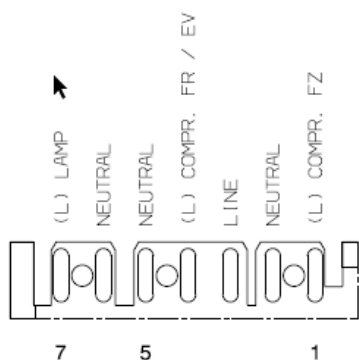
Rev.	Date	Description	Author
00	01/2020	Document creation	Anna Grimlund

## SAFETY



- All the work to be performed inside the appliance requires specific skills and knowledge and may only be carried out by qualified and authorised Service Engineers
- Before you access internal components, take the plug out of the socket to disconnect the power supply.
- Some of the components in the mechanical part could cause injuries, so wear suitable protection and proceed with caution.

# ERF2010 CONNECTORS



**POWER CONNECTOR  
EDGE CONNECTOR**

MFMP 7262/007/006/960

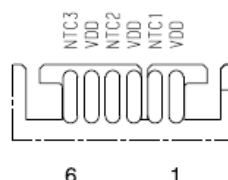
*Detail J1*



**DOOR SWITCH  
EDGE CONNECTOR**

MOLEX 91491-9103,  
AMP 1-135518-2,  
or equivalent

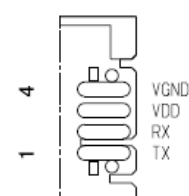
*Detail J2*



**NTC  
EDGE CONNECTOR**

STOCKO MFPM 7242-008-560-450,  
MOLEX 91491-9006,  
AMP 1-135518-6, or equivalent

*Detail J3*



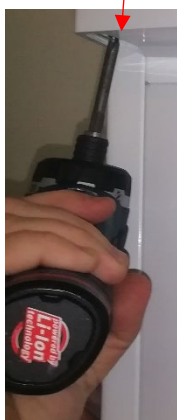
**RS 232  
EDGE CONNECTOR**

LUMBERG 3521 04-xx,  
STOCKO MFPM 7238-004-xx

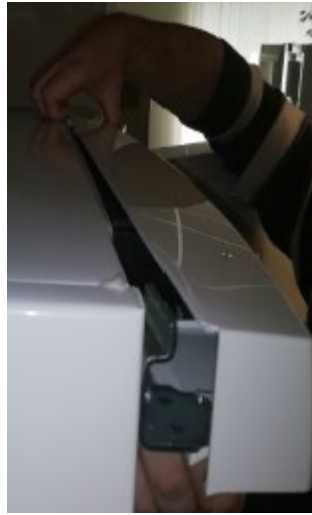
*Detail J4*

# REPLACE THE PCB

1. Remove the screws from the corners of the cover.



2. Open the door and open the cover by the corners



3. Remove the connectors



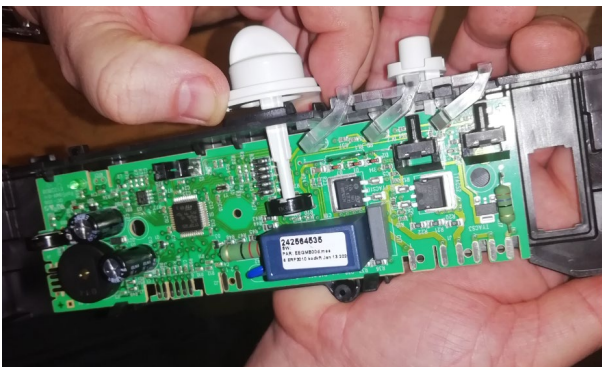
4. Remove the black PCB box, it is fixed by two clips on the cover.



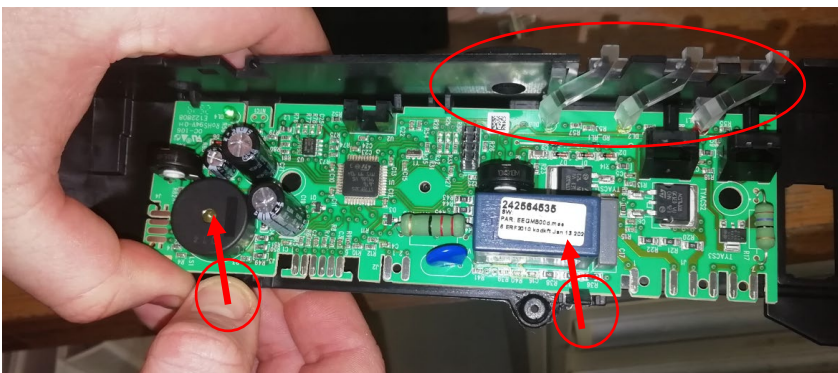
5. Remove the PCB, it is fixed in the corners.



6. Remove the knobs



7. Replace the PCB, make sure that all is in position



8. Put the knobs back, make sure that they are in the correct position.

9. Replace the PCB in the PCB box and put back the cover.