



SERVICE MANUAL

COOKING

FOR INTERNAL AND PARTNERS USE ONLY

© ELECTROLUX HOME PRODUCTS
Consumer Service - EMEA
Quality & Continuous Improvement - Technical Support

FACE GLASS RANGE HOOD



EN

Publication number
599 834 486
Edition: 11/2019 - Rev. 00

CONTENTS

CONTENTS	1
1 PURPOSE OF THIS MANUAL	2
2 SAFETY	3
3 FACE GLASS RANGE HOOD	4
4 ACCESSIBILITY	5
5 ELECTRICAL WIRING	13
6 TROUBLESHOOTING	14

1 PURPOSE OF THIS MANUAL

The purpose of this Service Manual (SM) is to provide Service Engineers who are already familiar with the repair procedures of Hoods
This SM will provide information on:

- Hood Range
- Accessesbility
- Technical and functional characteristics
- Trouble shooter

Document Revisions

Rev.	Date	Description	Author
00	19/11/2019	Document creation	Said Hatem

Acronyms & Abbreviations

Terms	Initials
Grease Filter	GF
Glass Assembly	GA
Control Assembly	CA
Feeder Cable	FC
Blower Assembly	BA
Electrical Installation Assembly	EIA
Gas Spring Lifter	GSL
Lower Grease Filter	LGF
Charcoal Filter	CF
Hob to Hood Assembly	H2HA
Lower Aesthetic Panel	LAP

2 SAFETY



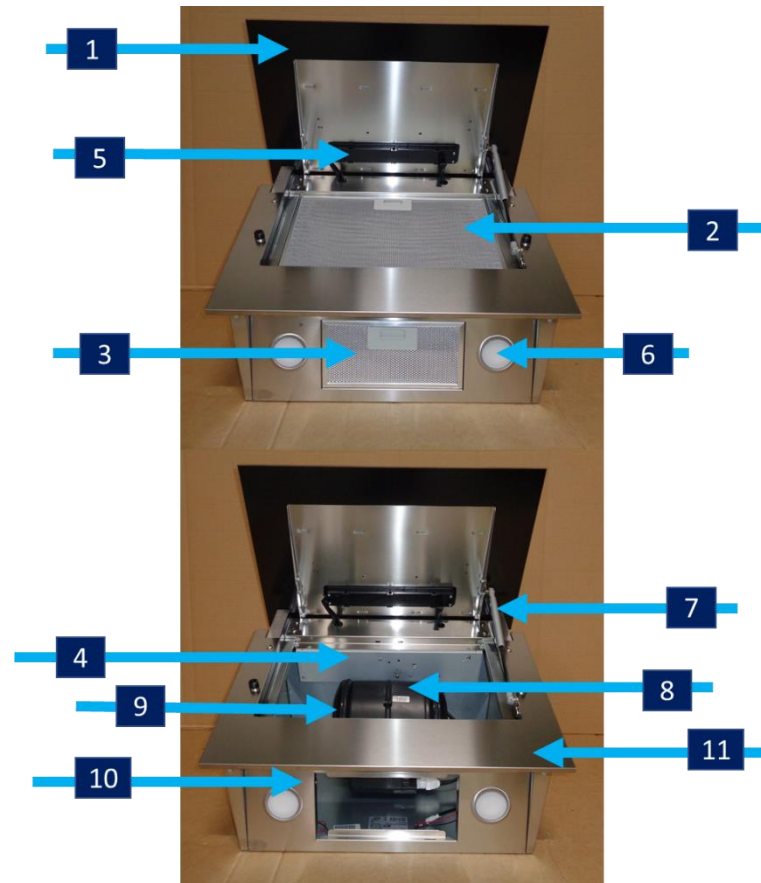
- All the work to be performed inside the appliance requires specific skills and knowledge and may only be carried out by qualified and authorised Service Engineers.
- Before you access internal components, take the plug out of the socket to disconnect the power supply.
- Use a pair of safety gloves to avoid sharp cuts.
- Some of the components in the mechanical part could cause injuries, so wear suitable protection and proceed with caution.
- Prior to touching the light bulbs ensure they are cooled down.

3 FACE GLASS RANGE HOOD

3.1 Hood Features

It's a mechanical device which situated upper the cooktop, mainly contains a Blower Assembly, Grease Filters and a Control Assembly.

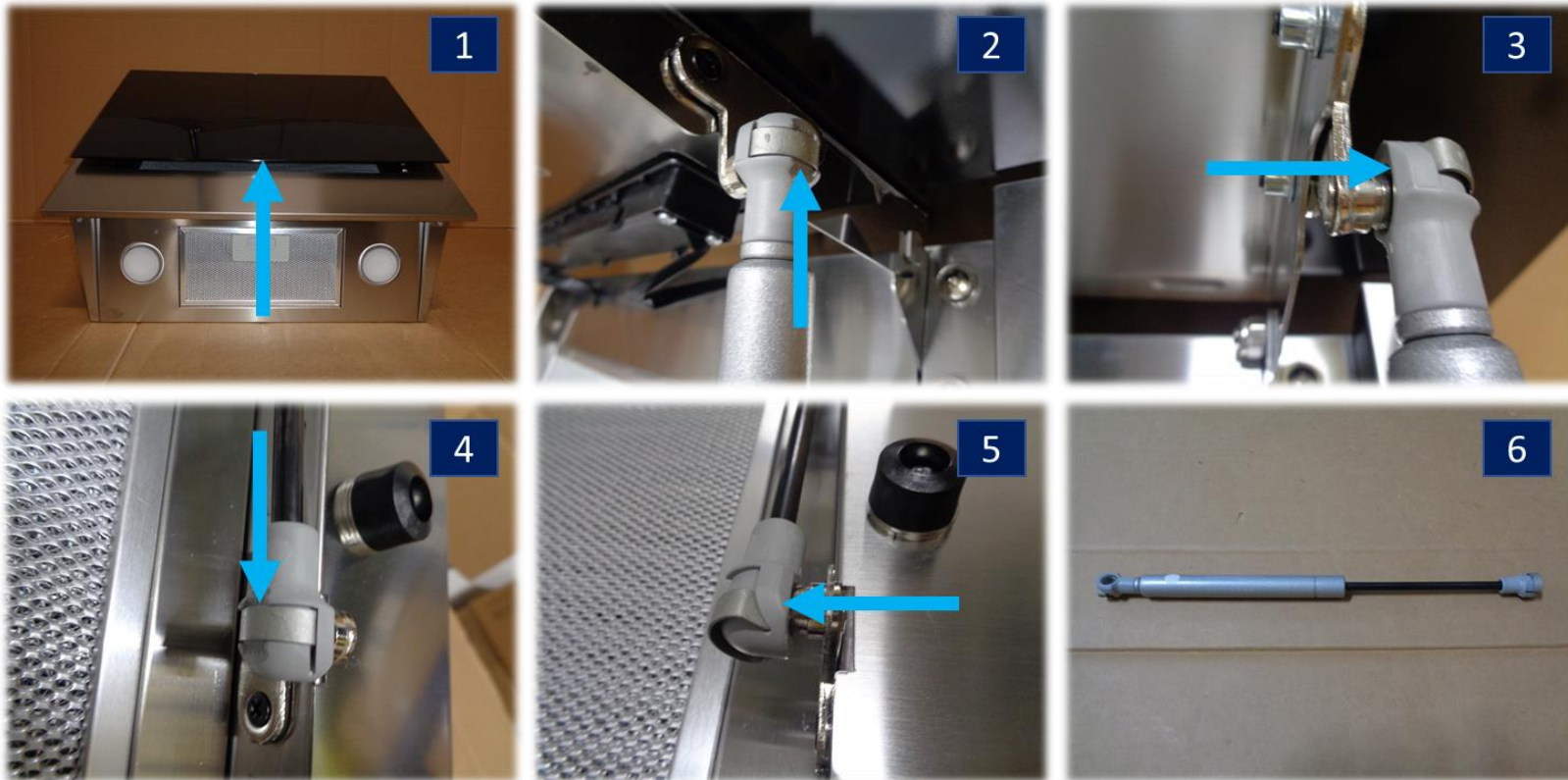
1	Glass Assembly
2	Grease Filter
3	Lower Grease Filter
4	Electrical Installation Assembly
5	Control Assembly
6	Lamp
7	Gas Spring Lifter
8	Blower Assembly
9	Charcoal Filter
10	Hob to Hood Assembly
11	Lower Aesthetic Panel



4 ACCESSIBILITY

4.1 Gas Spring Lifter

1. Lift the [GA](#).
2. Slide up the lever in the upper side of the [GSL](#).
3. Unsnap the upper side of the [GSL](#).
4. Slide down the lever in the lower side of the [GSL](#).
5. Unsnap the lower side of the [GSL](#).
6. The [GSL](#) removed.



4.2 Lower Grease Filter

1. Push the catch in the handle structure to unsnap the [LGF](#).
2. Pull out to release.
3. The [LGF](#) released.

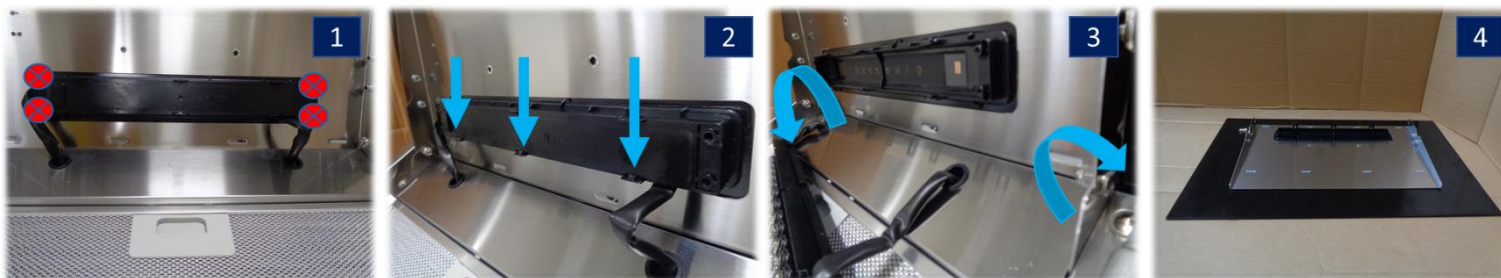


4.3 Glass Assembly

Perform (1st, 2nd and 3rd) steps of chapter [4.1](#)

! Keep holding the [GA](#) when performing this chapter

1. Unfasten 4* screws which secure the [CA](#) to the [GA](#).
2. Unsnap the [CA](#) from the [GA](#).
3. Turn the nuts counter clockwise to release the [GA](#).
4. The [GA](#) removed.



4.4 Grease Filter

Perform the 1st step of chapter [4.1](#)

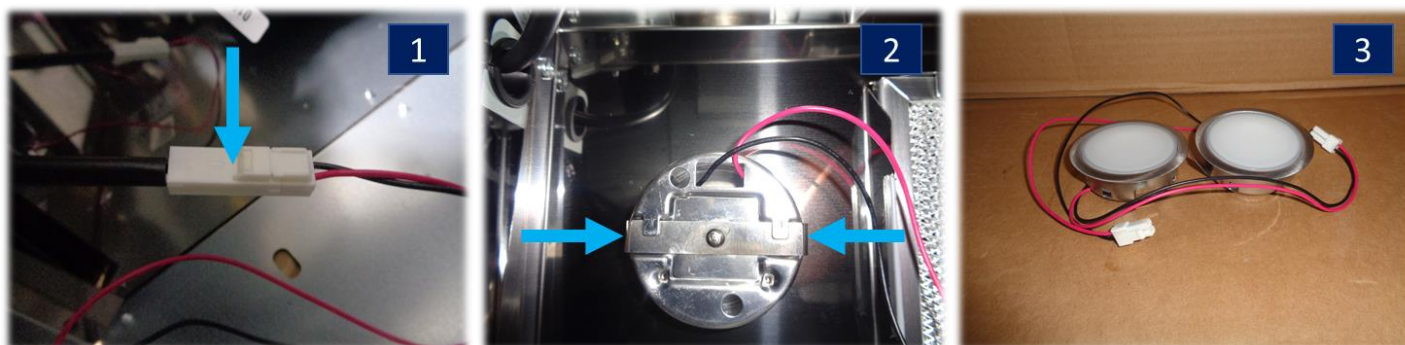
1. Push the catch in the handle structure to unsnap the [GF](#).
2. Pull out to release.
3. The [GF](#) released.



4.5 Lamp

Perform the 1st step of chapter [4.1](#) and chapter [4.4](#)

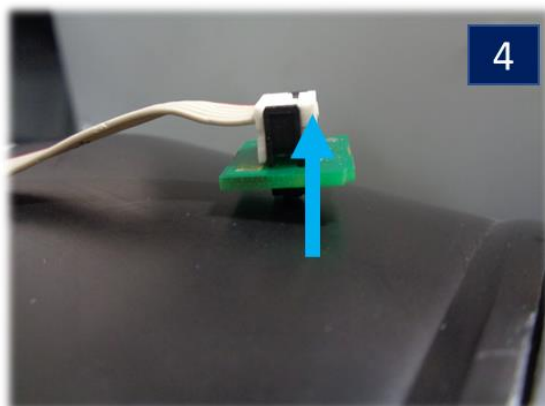
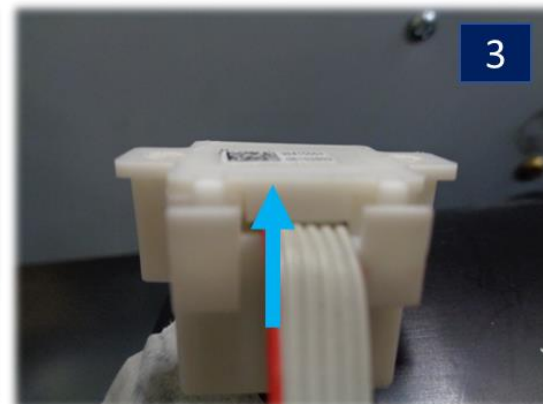
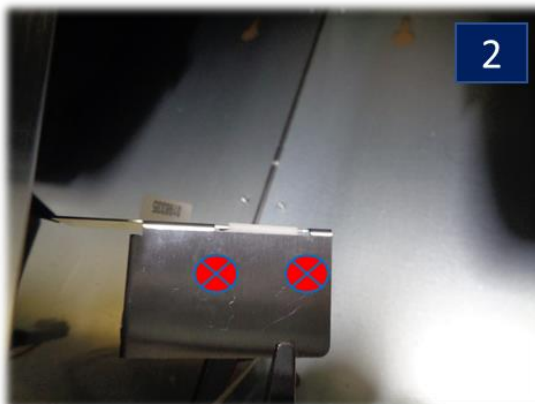
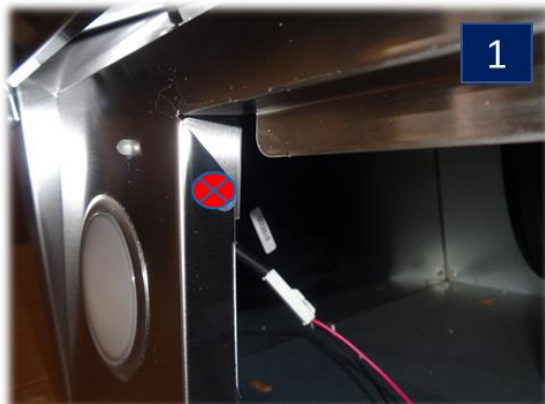
1. Unsnap the lamp cables connector.
2. Press the springs and push outward.
3. The lamps removed.



4.6 Hob to Hood Assembly

Perform the 1st step of chapter [4.1](#), chapter [4.2](#) and chapter [4.4](#)

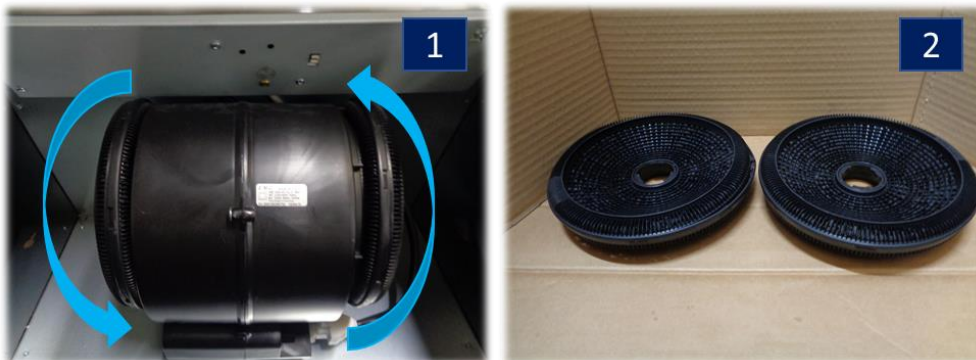
1. Unfasten 1* screw which secure the [H2HA](#) to the hood chassis.
2. Unfasten 2* screws which secure the [H2HA](#) to the [H2HA](#) holder.
3. Unsnap the [H2HA](#) cover.
4. Unsnap the H2HA bus cable.
5. The [H2HA](#) removed.



4.7 Charcoal Filter

Perform 1st step of chapter [4.1](#) and chapter [4.4](#)

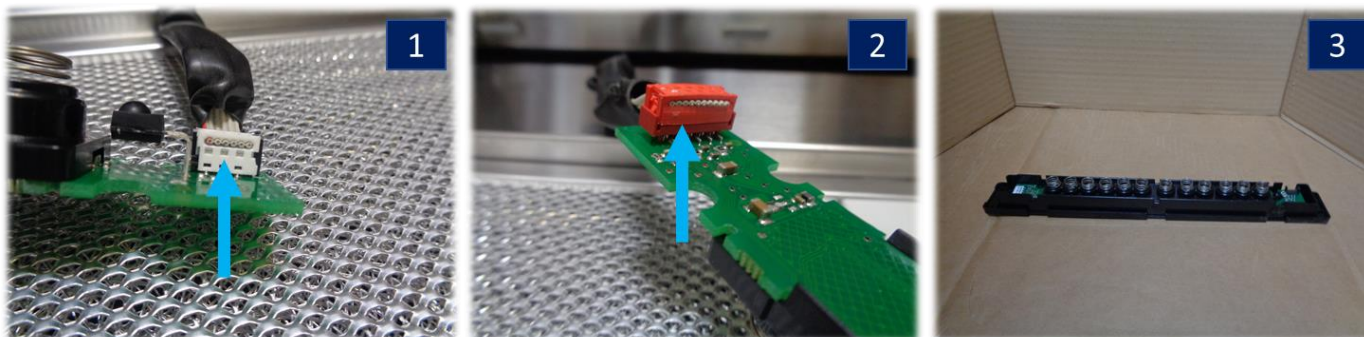
1. Turn the [CF](#) clockwise to remove.
2. The [CF](#) removed.



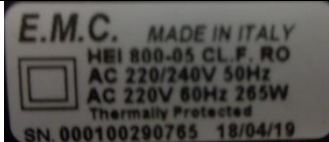
4.8 Control Assembly

Perform the 1st step of chapter [4.1](#) and (1st and 2nd) steps of chapter [4.3](#)

1. Unsnap the [H2HA](#) – [CA](#) bus cable harness.
2. Unsnap the [EIA](#) – [CA](#) bus cable harness.
3. The [CA](#) removed.

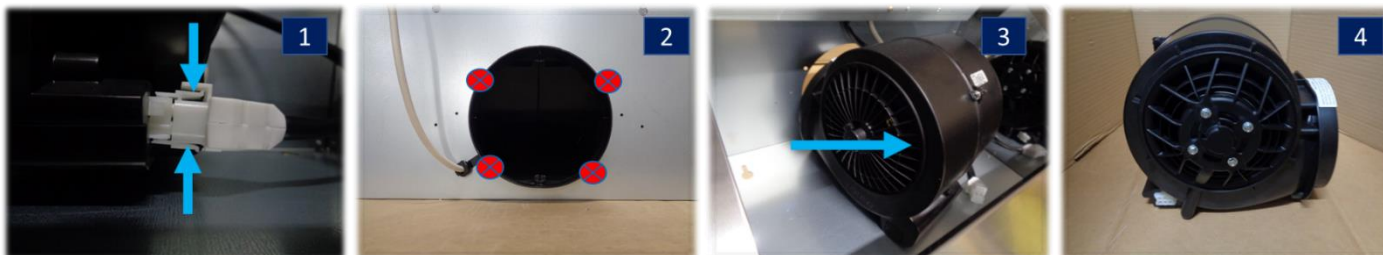


4.9 Blower Assembly

	MAX Speed	3 rd Speed	2 nd Speed	1 st Speed	Label
Motor Power(W) HEI 800	255	235	1205	170	

Perform 1st step of chapter [4.1](#), chapter [4.4](#) and chapter [4.7](#)

1. Unsnap the [BA](#) - [EIA](#) connector.
2. Unfasten 4* screws which secure the [BA](#) to the top side of the hood chassis.
3. Extract the [BA](#).
4. The [BA](#) removed.



4.10 Lower Aesthetic Panel

Perform 1st step of chapter [4.1](#)

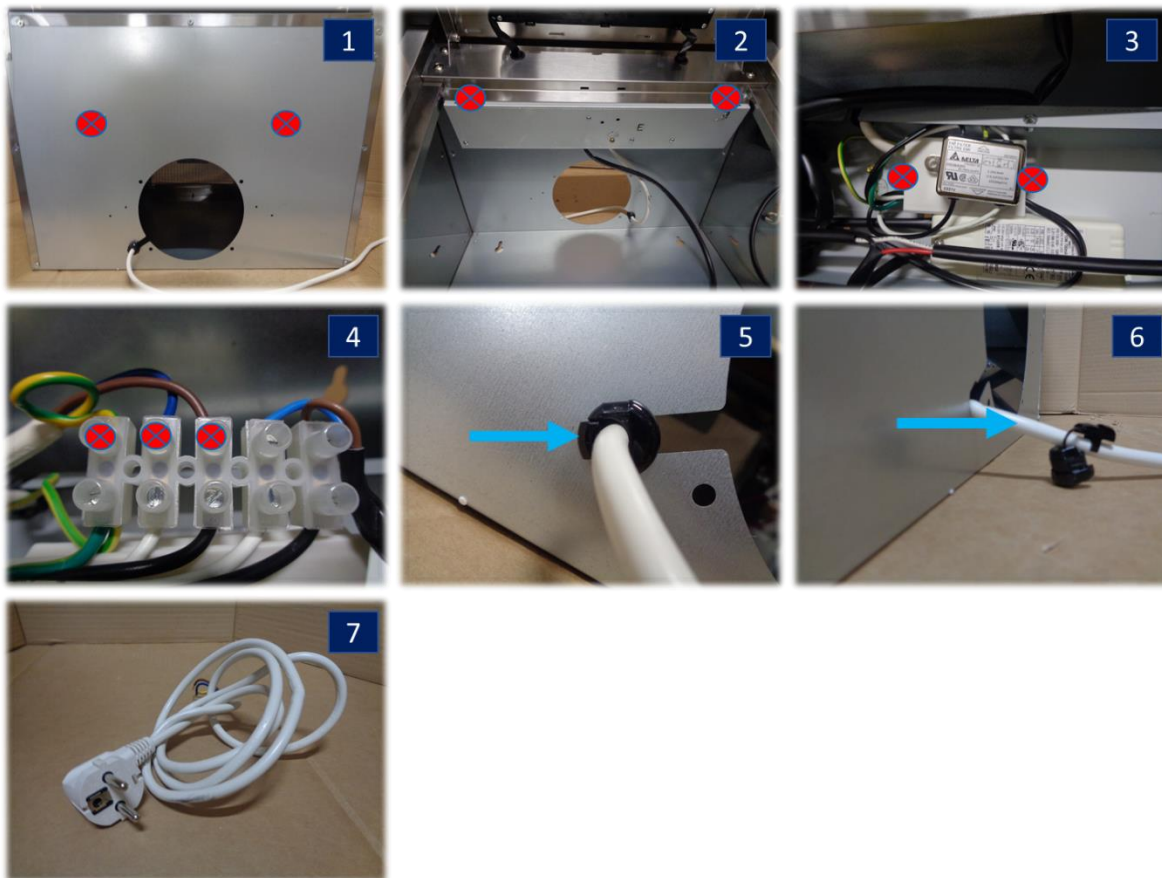
1. Unfasten 4* screws which secure the [LAP](#) to the hood chassis in the front side.
2. Unfasten 2* screws which secure the [LAP](#) to the hood chassis in the lower side.
3. The [LAP](#) removed.



4.11 Feeder Cable

Perform 1st step of chapter [4.1](#), chapter [4.4](#), chapter [4.7](#) and chapter [4.9](#)

1. Unfasten 2* screws which secure the [EIA](#) holder to the top side of the hood chassis.
2. Unfasten 2* screws which secure the [EIA](#) holder to the inside of the hood chassis.
3. Unfasten 2* screws which secure the junction clamp box cover.
4. Loosen 3* screws which secure the [FC](#) to the junction clamp.
5. Unsnap the [FC](#) cable clamp.
6. Extract the [FC](#).
7. The [FC](#) removed.



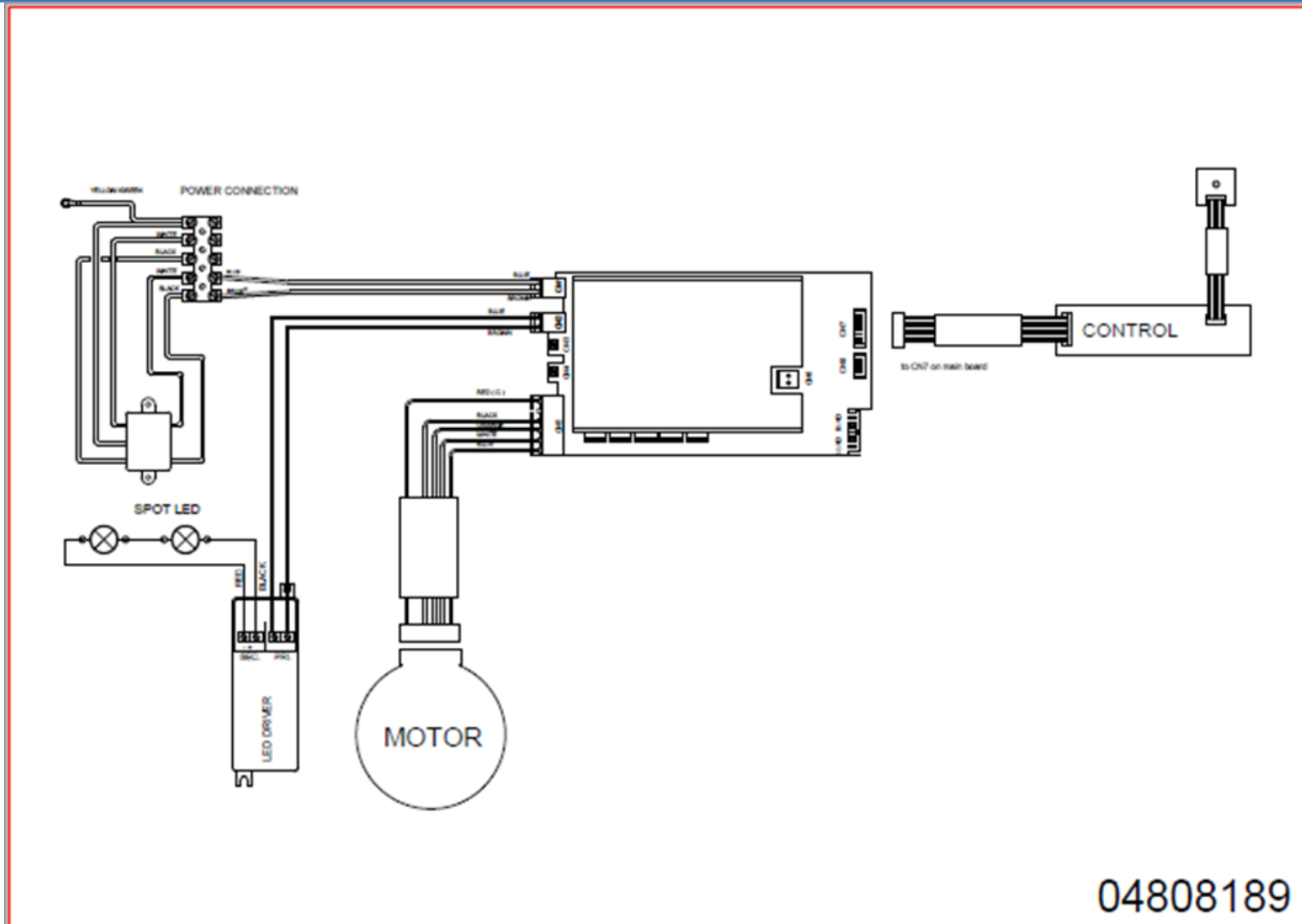
4.12 Electrical Installation Assembly

Perform the 1st step of chapter [4.1](#), (1st and 2nd) steps of chapter [4.3](#), chapter [4.4](#), the 1st step of chapter [4.5](#), chapter [4.7](#), the 2nd step of chapter [4.8](#), chapter [4.9](#) and (1st, 2nd, 3rd and 4th) steps of chapter [4.11](#)

1. Unsnap the [CA](#) cable fairlead.
2. Unsnap the ([H2HA](#) and Lamp) cable fairlead on the [EIA](#) side.
3. Unsnap the ([H2HA](#) and Lamp) cable fairlead on the ([H2HA](#) and Lamp) side.
4. Extract the [EIA](#).
5. The [EIA](#) removed



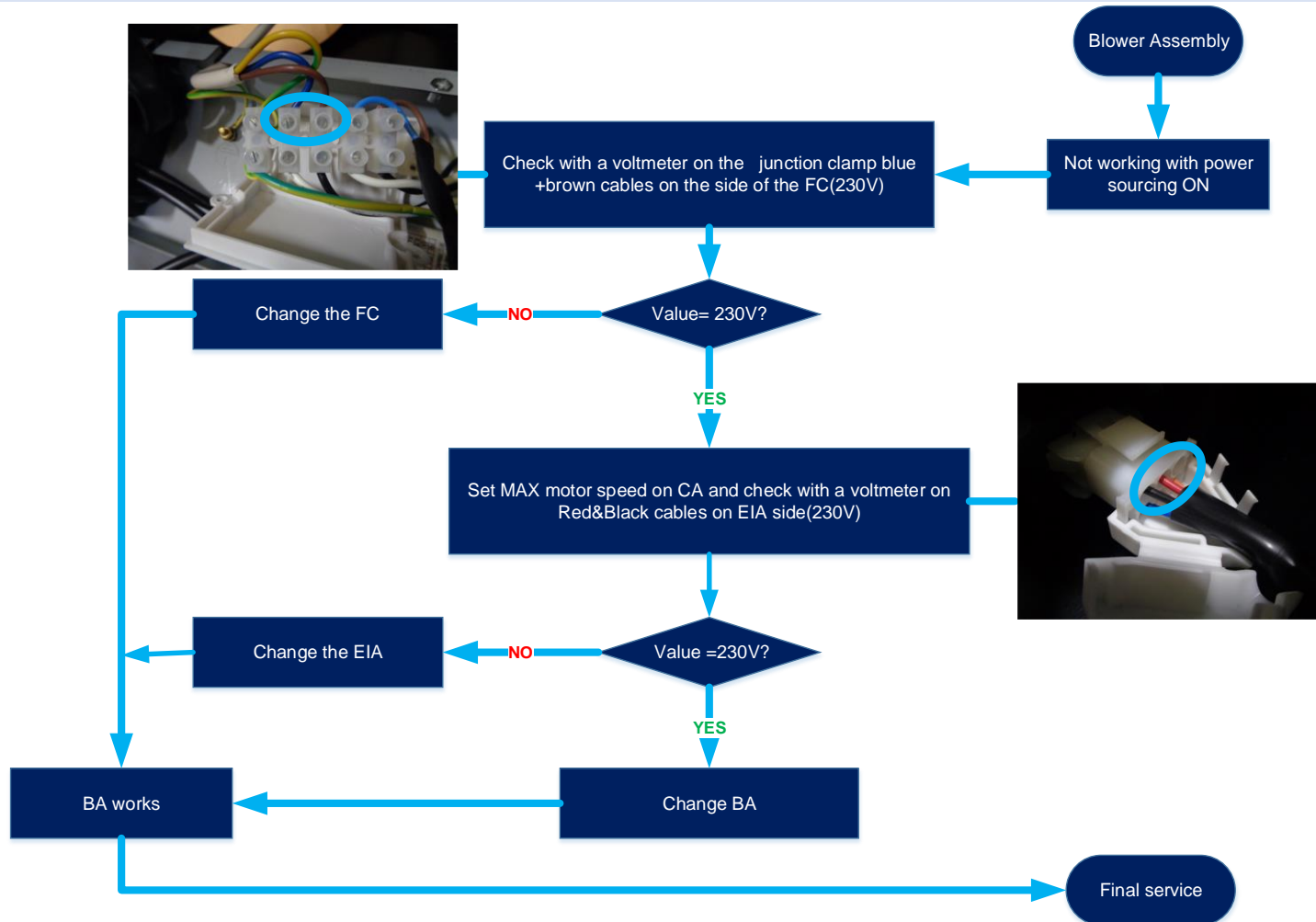
5 ELECTRICAL WIRING



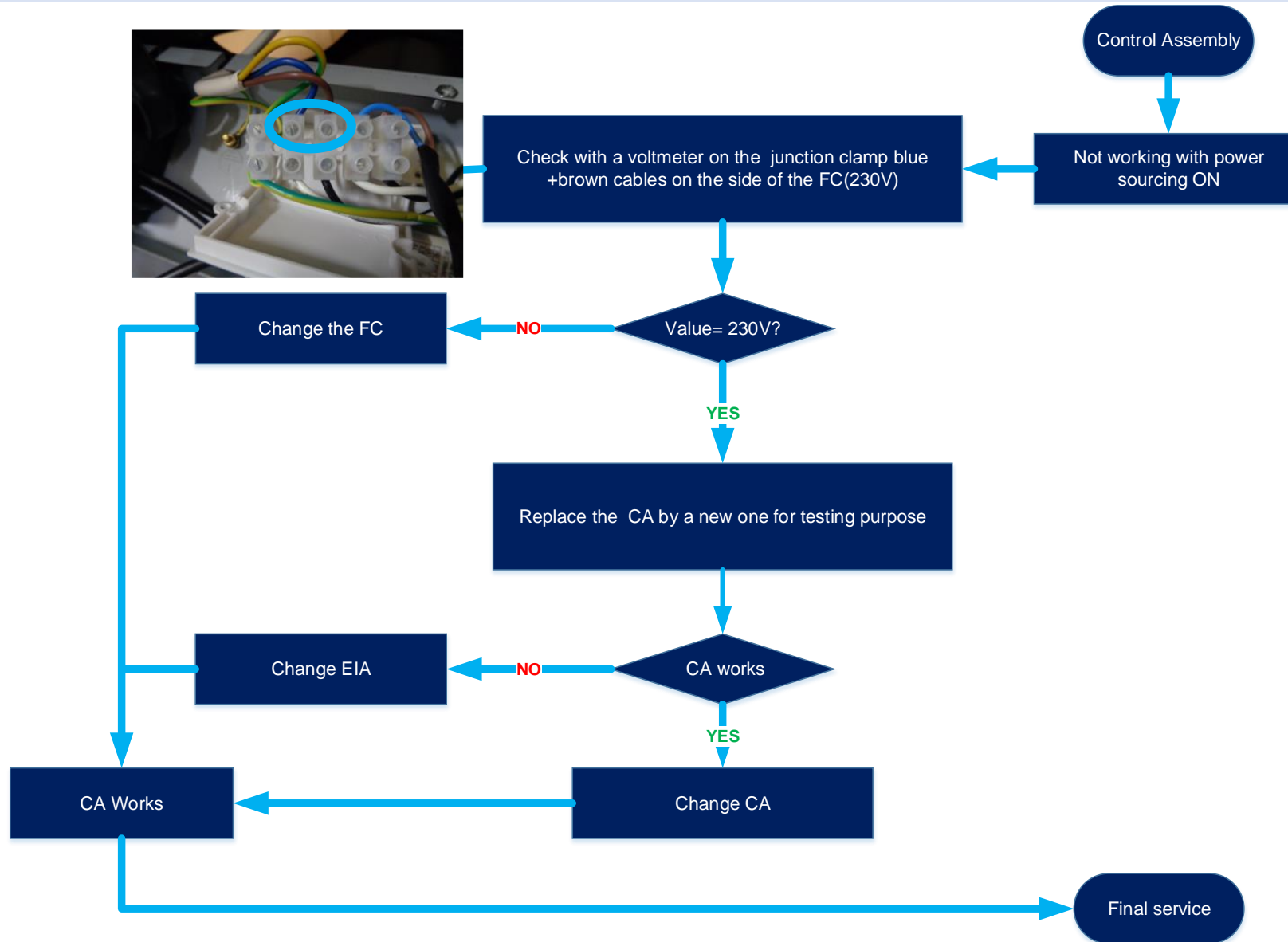
6 TROUBLESHOOTING

Term	Feeder Cable	Control Assembly	Blower Assembly	Electrical Installation Assembly	Hob to Hood Assembly
Initial	FC	CA	BA	EIA	H2HA

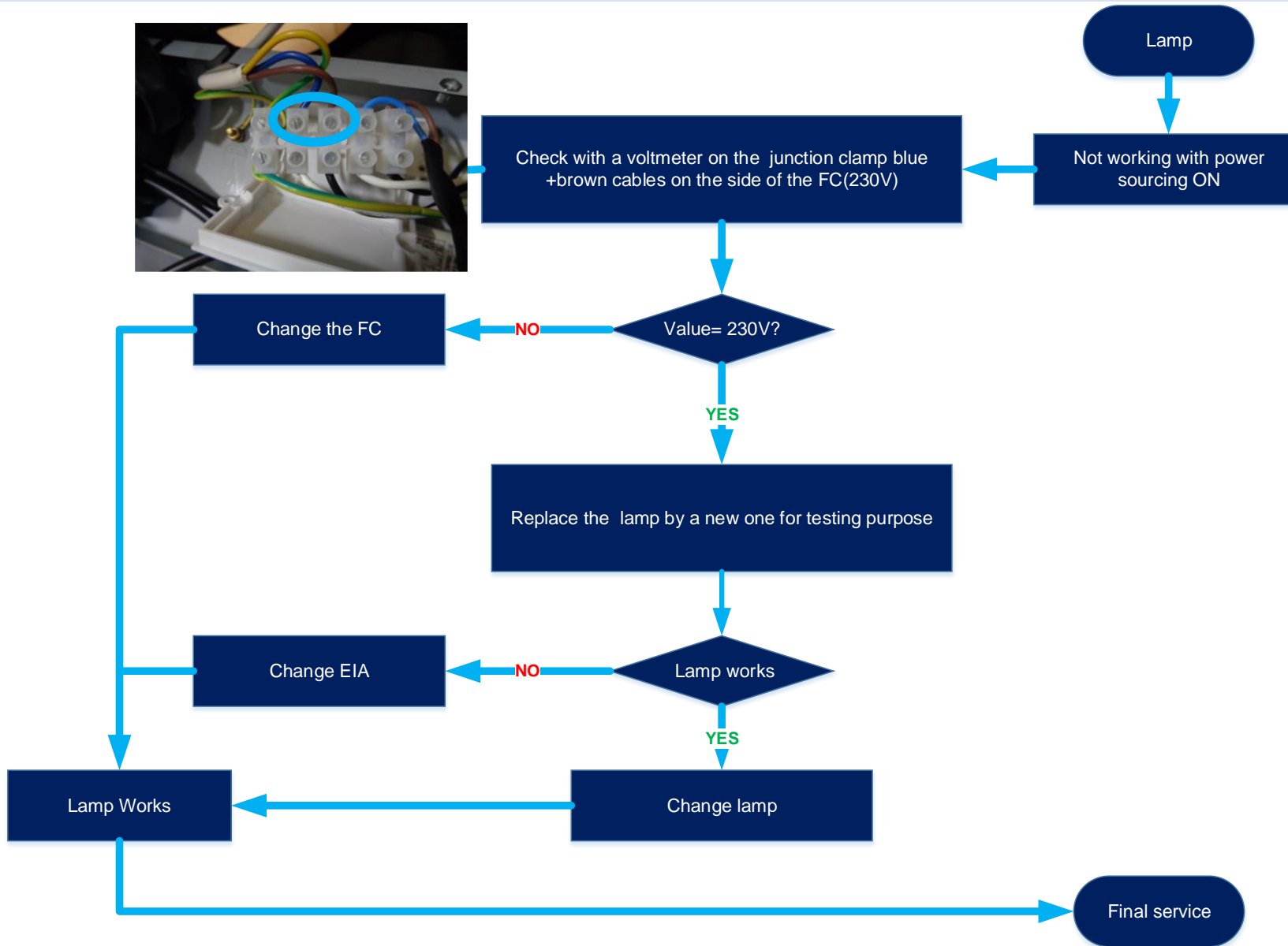
6.1 Blower Assembly



6.2 Control Assembly



6.3 Lamp



6.4 Hob to Hood Assembly

