



Electrolux

SERVICE MANUAL COOKING

FOR INTERNAL AND PARTNERS USE ONLY

© ELECTROLUX HOME PRODUCTS

Consumer Service - EMEA

Quality & Continuous Improvement - Technical Support

SKLOK RANGE HOOD



EN

Publication number

599 834 474

Edition: 07/2019 - Rev. 00

CONTENTS

| | |
|---------------------------------|-----------|
| CONTENTS | 1 |
| 1 PURPOSE OF THIS MANUAL | 2 |
| 2 SAFETY | 3 |
| 3 SKLOK RANGE HOOD | 4 |
| 4 ACCESSIBILITY | 5 |
| 5 ELECTRICAL WIRING | 12 |
| 6 TROUBLESHOOTING | 14 |

1 PURPOSE OF THIS MANUAL

The purpose of this Service Manual (SM) is to provide Service Engineers who are already familiar with the repair procedures of Hoods
This SM will provide information on:

- Hood Range
- Accessibility
- Technical and functional characteristics
- Troubleshooter

Document Revisions

| Rev. | Date | Description | Author |
|------|---------|-------------------|----------------------------|
| 00 | 07/2019 | Document creation | Said Hatem |
| | | | |
| | | | |
| | | | |

Acronyms & Abbreviations

| Terms | Initials |
|----------------------------------|----------------------|
| Grease Filter | GF |
| Sliding-Out Extension Assembly | SOEA |
| Runner Assembly | RA |
| Feeder Cable | FC |
| Led Driver | LD |
| Electrical Installation Assembly | EIA |
| Blower Assembly | BA |

2 SAFETY



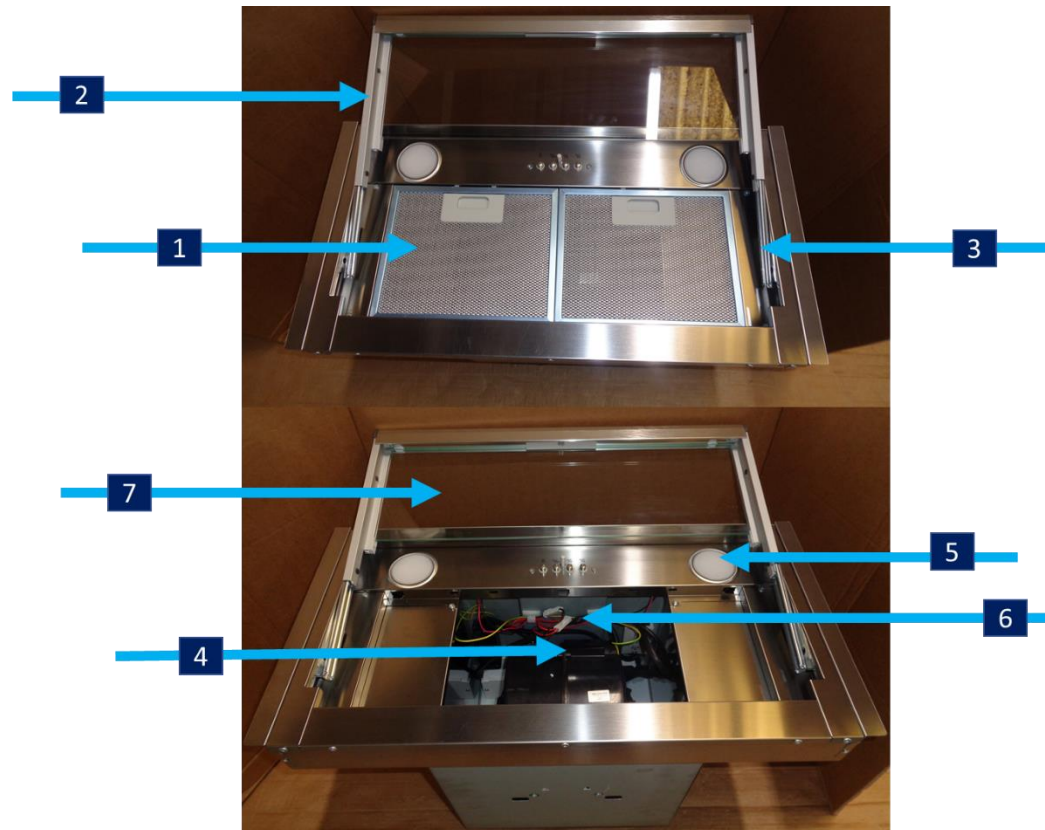
- All the work to be performed inside the appliance requires specific skills and knowledge and may only be carried out by qualified and authorised Service Engineers.
- Before you access internal components, take the plug out of the socket to disconnect the power supply.
- Use a pair of safety gloves to avoid sharp cuts.
- Some of the components in the mechanical part could cause injuries, so wear suitable protection and proceed with caution.
- Prior to touching the light bulbs ensure they are cooled down.

3 SKLOK RANGE HOOD

3.1 Hood Features

It's a mechanical device which situated over the cooktop, mainly contains a Blower Assembly, Grease Filters and a Control Assembly.

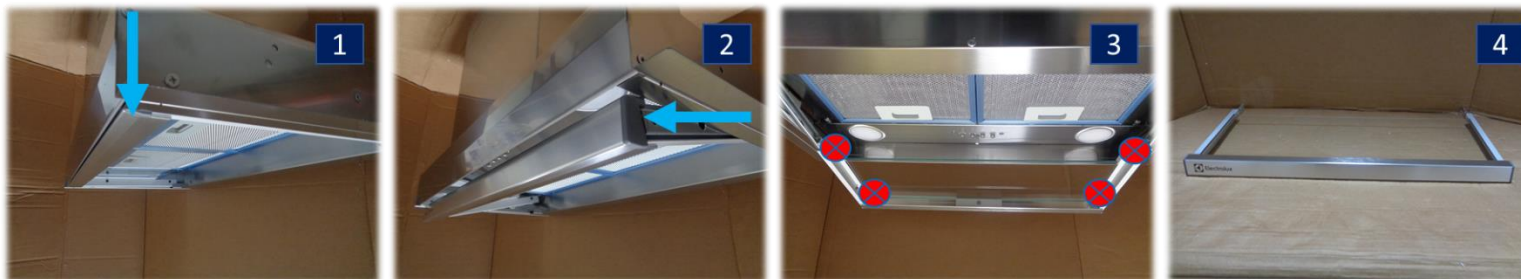
| | |
|---|----------------------------------|
| 1 | Grease Filter |
| 2 | Sliding-Out Extension Assembly |
| 3 | Runner Assembly |
| 4 | Blower Assembly |
| 5 | Lamp |
| 6 | Electrical Installation Assembly |
| 7 | Glass |



4 ACCESSIBILITY

4.1 Sliding-Out Extension Assembly

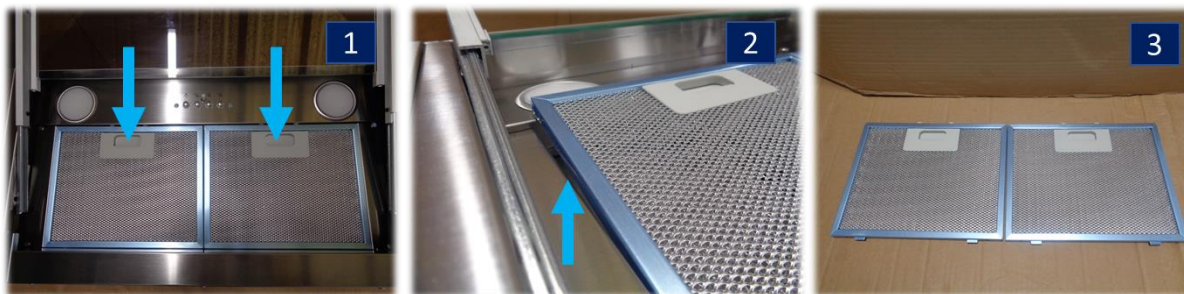
1. Move down the [SOEA](#).
2. Slide out the [SOEA](#).
3. Unfasten 4* screws which secure the [SOEA](#) to the Runners.
4. The [SOEA](#) removed.



4.2 Grease Filter

Perform 1st and 2nd steps of chapter [4.1](#)

1. Push the catch in the handle structure to unsnap the [GF](#).
2. Move out the [GF](#).
3. The [GF](#) removed.



4.3 Runner Assembly

Perform chapter [4.1](#) and chapter [4.2](#)

! Dismount the hood before performing the 1st and 2nd steps of this chapter

1. Unfasten 2* screws which secure the [RA](#) to the lateral side of the hood chassis.
2. Unfasten 1* screw which secure the [RA](#) to the back side of the hood chassis.
3. Extract the [RA](#).
4. The [RA](#) removed.



4.4 Glass

Perform 1st and 2nd steps of chapter [4.1](#)

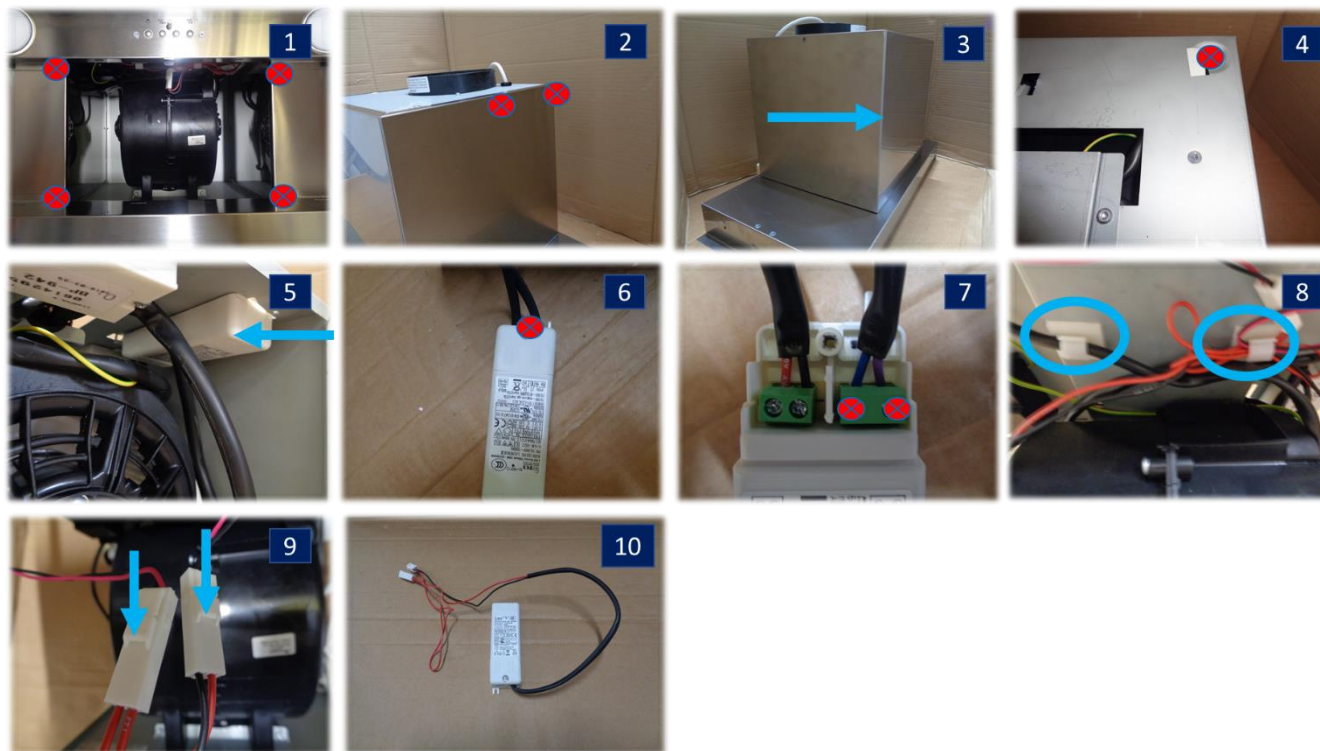
1. Unfasten 2* screws which secure the front panel to the [SOEA](#).
2. Extract the Glass.
3. The Glass removed.



4.5 Led Driver

Perform 1st and 2nd steps of chapter [4.1](#) and chapter [4.2](#)

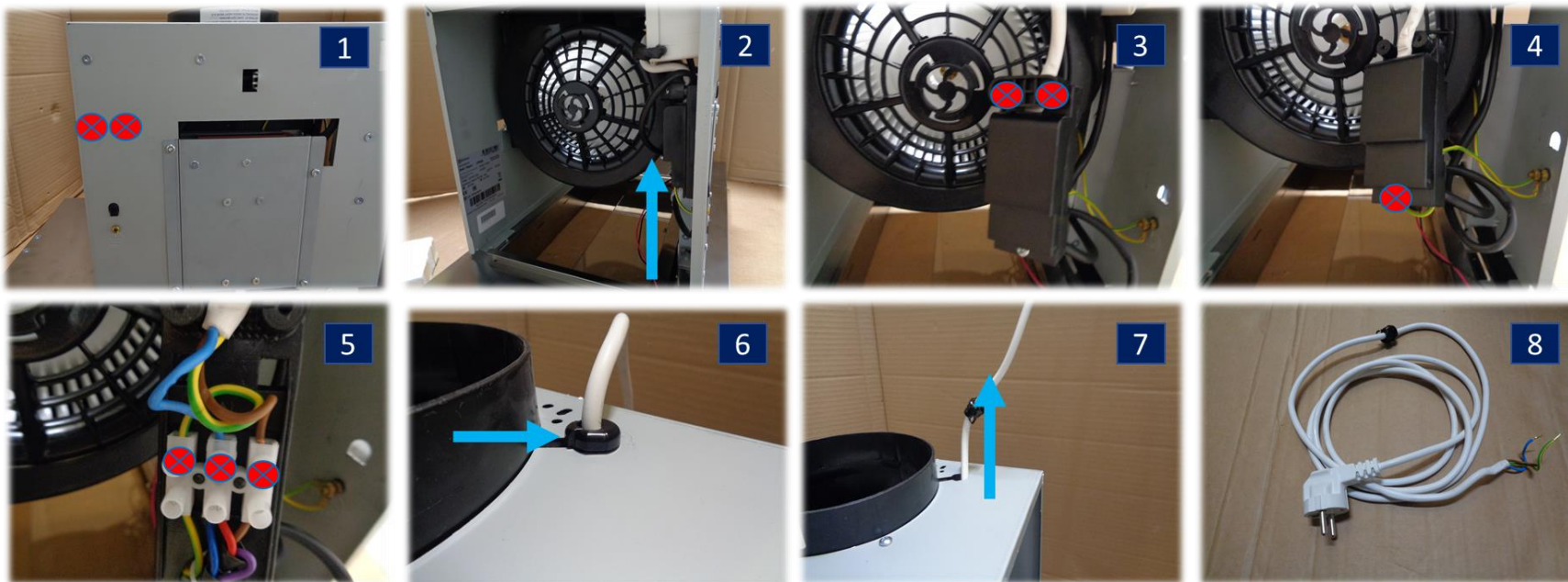
1. Unfasten 4* screws which secure the [BA](#) box cover to the hood chassis from inside.
2. Unfasten 4* screws which secure the [BA](#) box cover to the hood chassis from each side.
3. Remove the [BA](#) box.
4. Unfasten 1* screw which secure the [LD](#) to the [BA](#) box.
5. Extract the [LD](#).
6. Unfasten 1* screw which secure the [LD](#) cover.
7. Loosen 2* screws which secure the [LD](#) power connection cable.
8. Unsnap the cables from the cable holders.
9. Unsnap the lamp connectors.
10. The [LD](#) removed.



4.6 Feeder Cable

Perform 1st and 2nd steps of chapter [4.1](#),chapter [4.2](#) and (1st ,2nd and 3rd) steps of chapter [4.5](#)

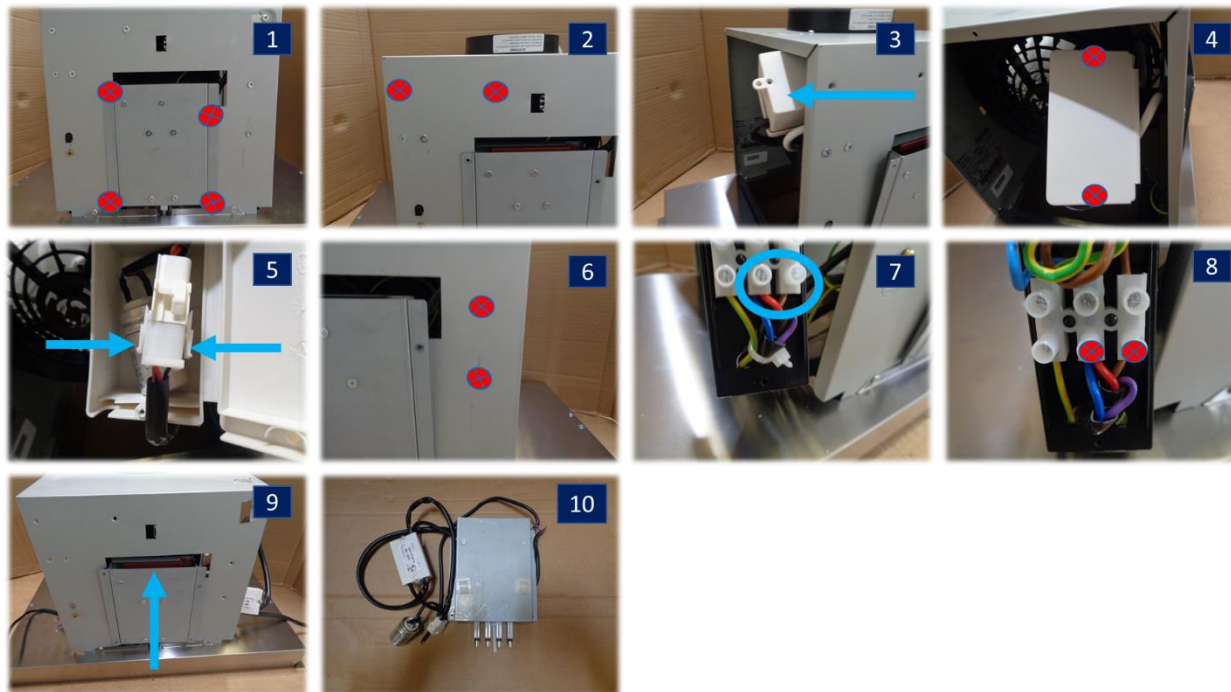
1. Unfasten 2* screws which secure the power box to the [BA](#) box.
2. Extract the power box.
3. Unfasten 2* screws which secure the cable clamp.
4. Unfasten 1* screw which secure the power box cover.
5. Loosen 3* screws which secure the [FC](#) to the junction clamp.
6. Unsnap the [FC](#) cable clamp.
7. Extract the [FC](#).
8. The [FC](#) removed.



4.7 Electrical Installation Assembly

Perform 1st and 2nd steps of chapter [4.1](#),chapter [4.2](#), (1st,2nd , 3rd,4th ,5th ,6th ,7th ,and 8th) steps of chapter [4.5](#) and (1st ,2nd,and 4th) steps of chapter [4.6](#)

1. Unfasten 4* screws which secure the [EIA](#) to the [BA](#) box.
2. Unfasten 2* screws which secure the [EIA-BA](#) connection box to the BA box.
3. Extract the [EIA-BA](#) connection box.
4. Unfasten 2* screws which secure the [EIA-BA](#) connection box cover.
5. Unsnap the [EIA-BA](#) connector.
6. Unfasten 2* screws which secure the [EIA](#) power connection box to the [BA](#) box.
7. Cut the cable tie.
8. Loosen 2* screws which secure the [EIA](#) power cable to the junction clamp.
9. Extract the [EIA](#).
10. The [EIA](#) removed.



4.8 Lamp

Perform (1st and 2nd) steps of chapter [4.1](#), chapter [4.2](#) and(8th and 9th) step of chapter [4.5](#)

! Use a thin plastic tool to avoid scratches on the hood shell

1. Press sequentially from both sides to unsnap the lamp.
2. Extract the lamp.
3. The Lamp removed.

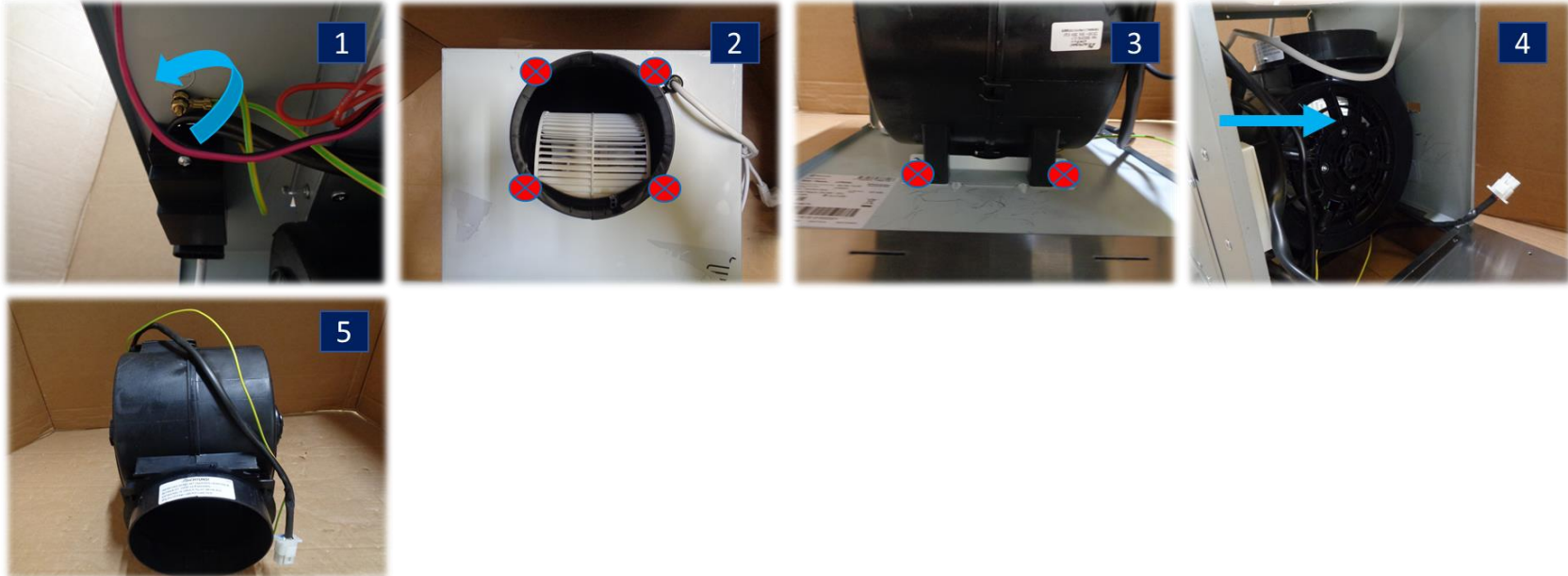


4.9 Blower Assembly

| | MAX Speed | 3 rd Speed | 2 nd Speed | MIN Speed | Label |
|---|-----------|-----------------------|-----------------------|-----------|-------|
| Motor Power(W) EB 40 1559.87 | 230 | _____ | 205 | 140 | |
| Motor Power(W) EA 37 00.602C | 130 | _____ | 80 | 67 | |

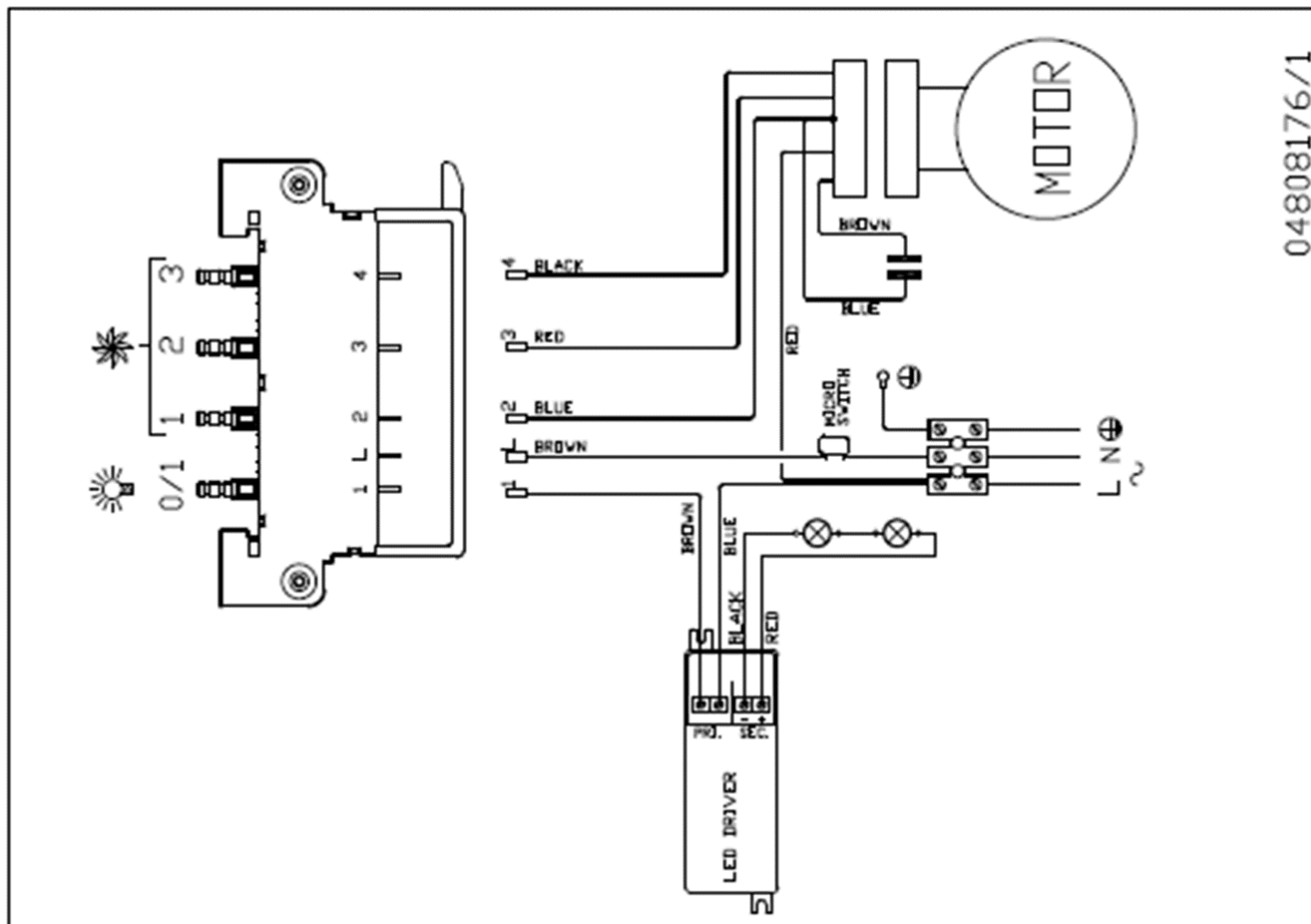
Perform (1st and 2nd) steps of chapter [4.1](#), chapter [4.2](#), (1st, 2nd and 3rd) steps of chapter [4.5](#) and (2nd, 3rd, 4th and 5th) steps of chapter [4.7](#)

1. Turn the nut counter clockwise to release the grounding cable.
2. Unfasten 4* screws which secure the BA to the top side of the [BA](#) box.
3. Unfasten 2* screws which secure the BA to the back side of the [BA](#) box.
4. Extract the [BA](#).
5. The [BA](#) removed.



5 ELECTRICAL WIRING

5.1 Range With EB 40 Motor

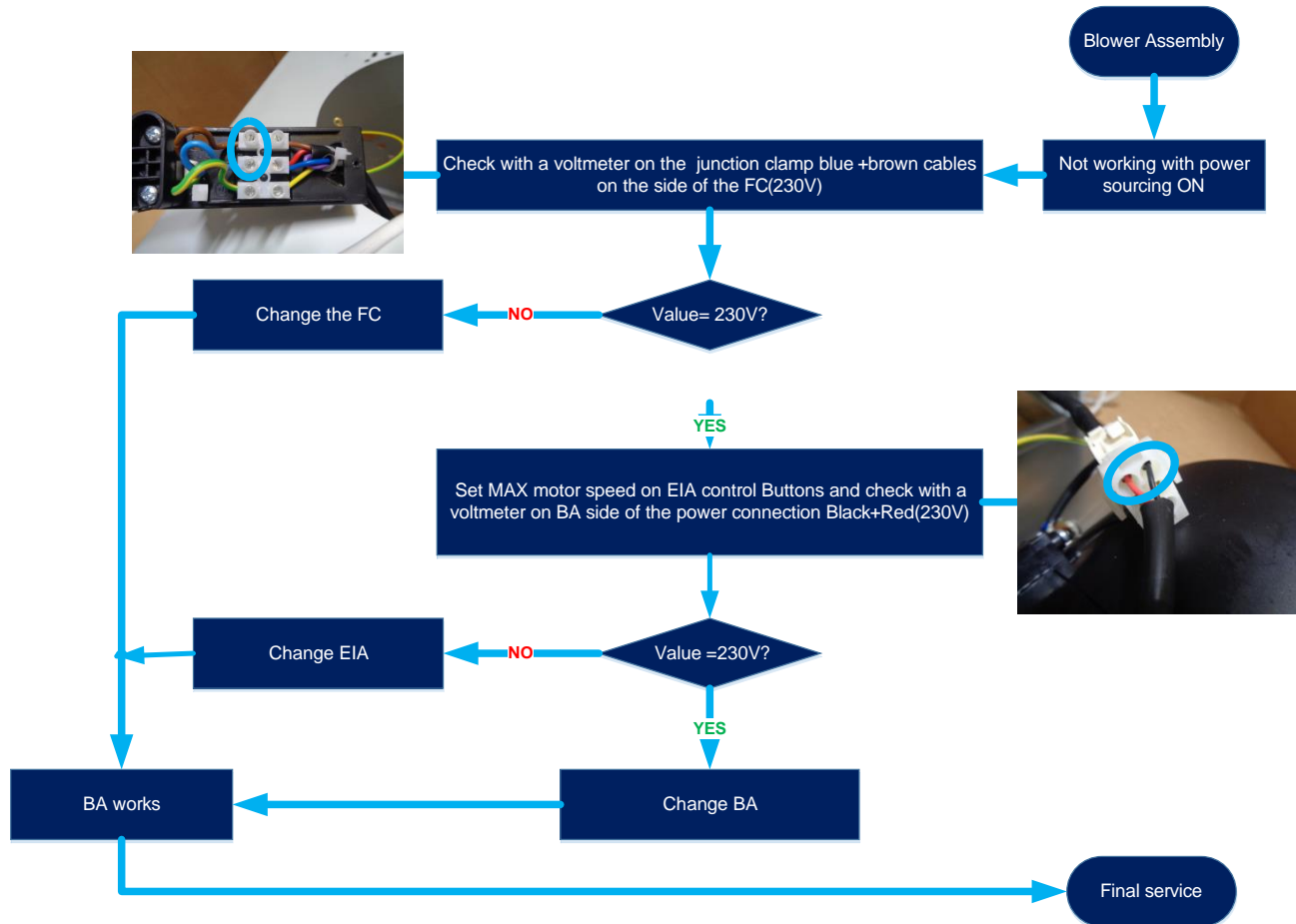


6 TROUBLESHOOTING

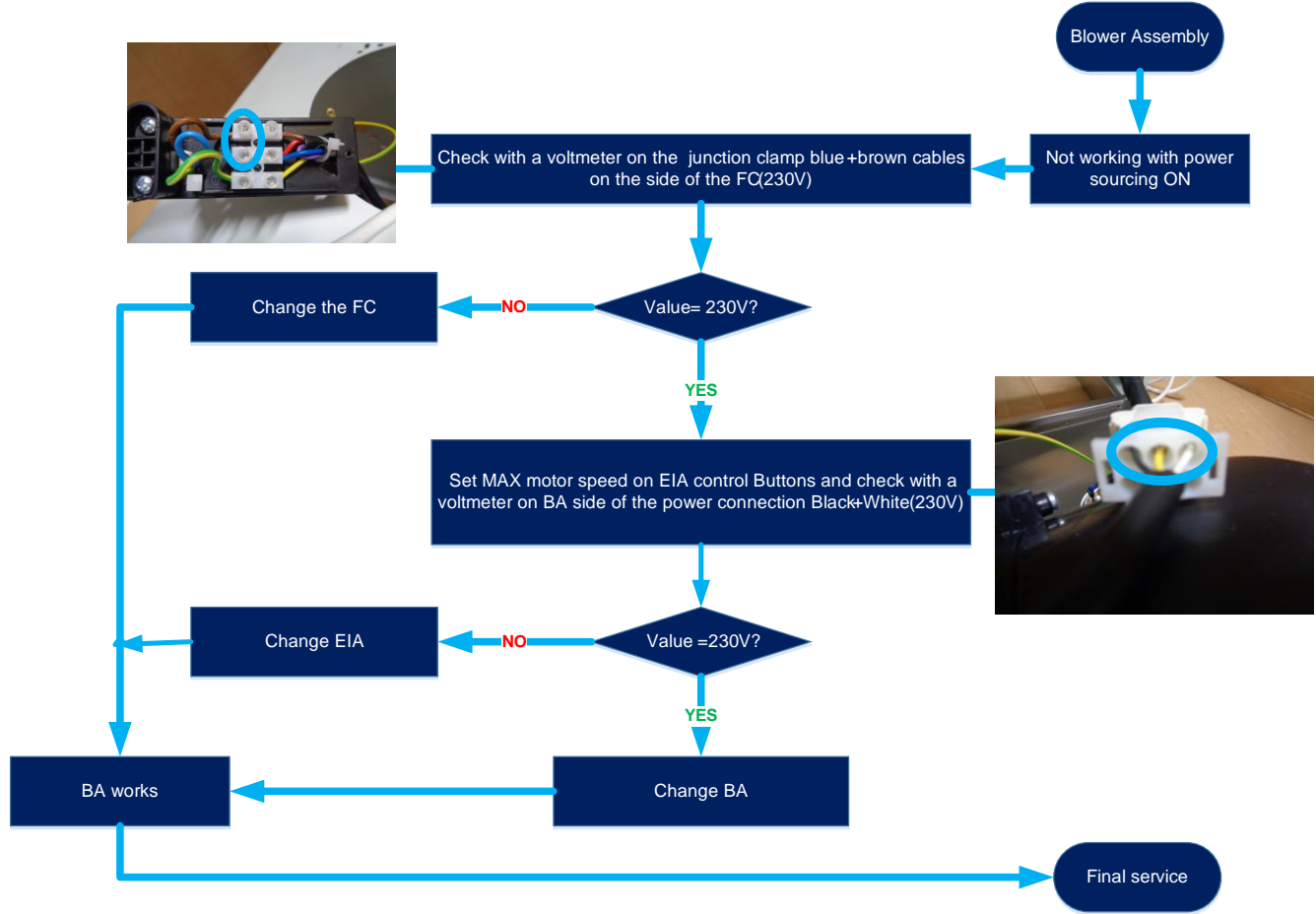
| | | | | |
|----------------|--------------|------------------|-----------------|----------------------------------|
| Term | Feeder Cable | Control Assembly | Blower Assembly | Electrical Installation Assembly |
| Initial | FC | CA | BA | EIA |

6.1 Blower Assembly

6.1.1 Range With EB40 Motor



6.1.2 Range With EA 37 Motor White & Black



6.2 Lamp

