



Electrolux

SERVICE MANUAL COOKING

FOR INTERNAL AND PARTNERS USE ONLY

© ELECTROLUX HOME PRODUCTS
Consumer Service - EMEA
Quality & Continuous Improvement - Technical Support

DELTA RANGE HOOD



EN

Publication number
599 834 472
Edition: 07/2019 - Rev. 00

CONTENTS

CONTENTS	1
1 PURPOSE OF THIS MANUAL	2
2 SAFETY	3
3 DELTA RANGE HOOD	4
4 ACCESSIBILITY	5
5 ELECTRICAL WIRING	11
6 TROUBLESHOOTING	12

1 PURPOSE OF THIS MANUAL

The purpose of this Service Manual (SM) is to provide Service Engineers who are already familiar with the repair procedures of Hoods
This SM will provide information on:

- Hood Range
- Accessibility
- Technical and functional characteristics
- Troubleshooter

Document Revisions

Rev.	Date	Description	Author
00	07/2019	Document creation	Said Hatem

Acronyms & Abbreviations

Terms	Initials
Grease Filter	GF
Control Assembly	CA
Charcoal Filter Frame	CFE
Feeder Cable	FC
Led Driver	LD
Blower Assembly	BA

2 SAFETY



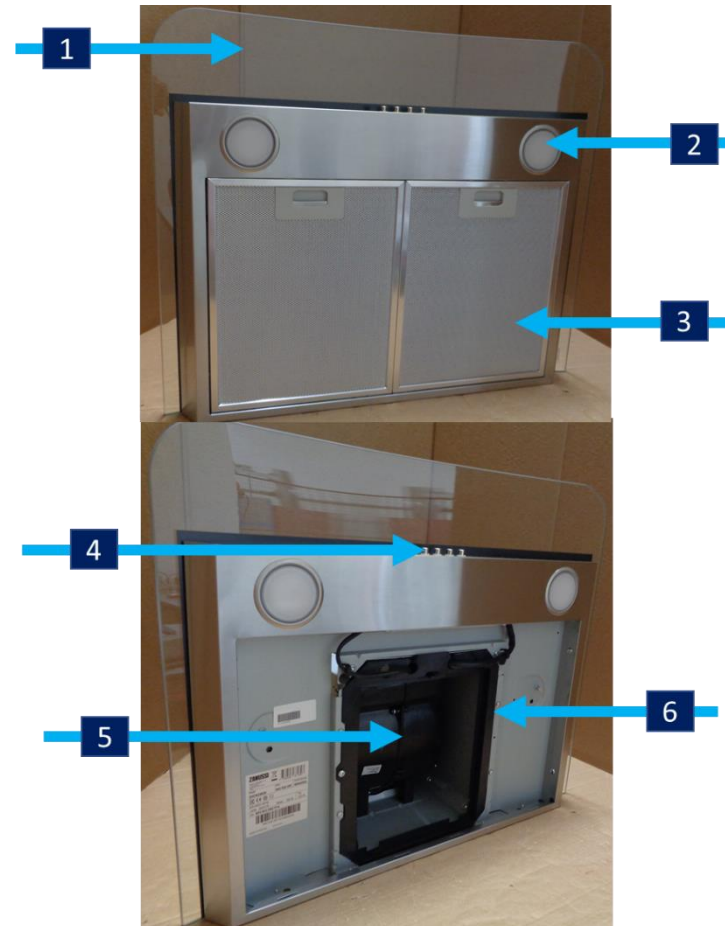
- All the work to be performed inside the appliance requires specific skills and knowledge and may only be carried out by qualified and authorised Service Engineers.
- Before you access internal components, take the plug out of the socket to disconnect the power supply.
- Use a pair of safety gloves to avoid sharp cuts.
- Some of the components in the mechanical part could cause injuries, so wear suitable protection and proceed with caution.
- Prior to touching the light bulbs ensure they are cooled down.

3 DELTA RANGE HOOD

3.1 Hood Features

It's a mechanical device which situated over the cooktop, mainly contains a Blower Assembly, Grease Filters and a Control Assembly.

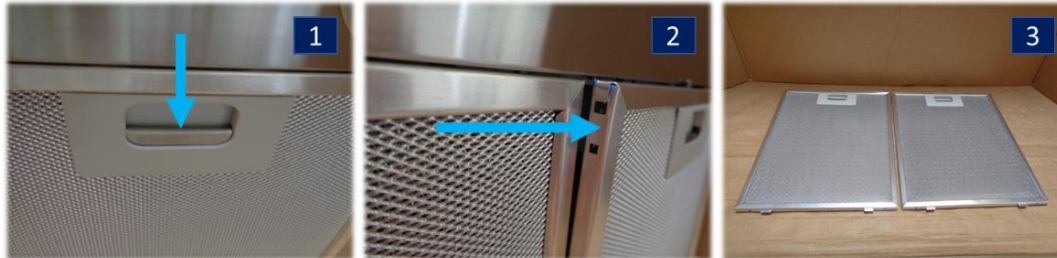
1	Glass
2	Lamp
3	Grease Filter
4	Control Assembly
5	Blower Assembly
6	Charcoal Filter Frame



4 ACCESSIBILITY

4.1 Grease Filter

1. Press the catch in the handle structure to unsnap the [GF](#).
2. Pull out the [GF](#).
3. The [GF](#) removed.



4.2 Charcoal Filter Frame

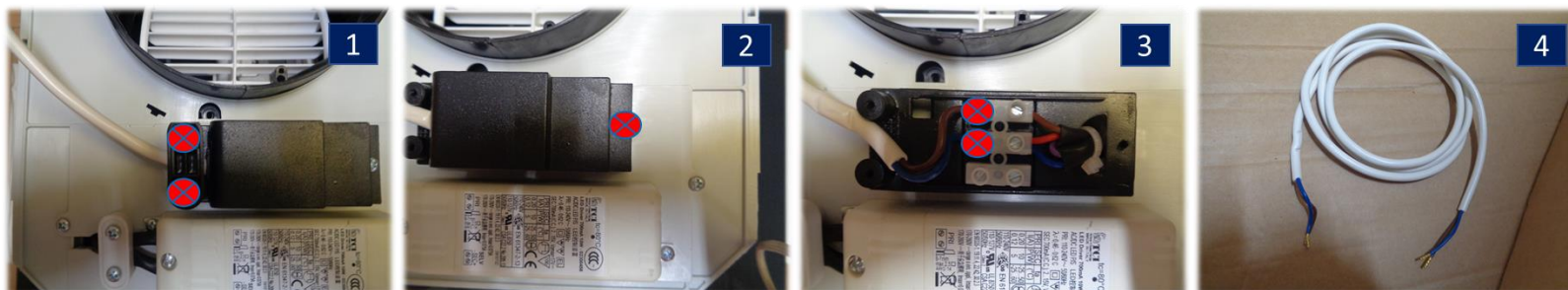
Perform chapter [4.1](#)

1. Unfasten 1* screw which secure the [CFF](#) to the hood chassis.
2. Unsnap the cables from the [CFF](#).
3. Pull down the [CFF](#).
4. The [CFF](#) removed.



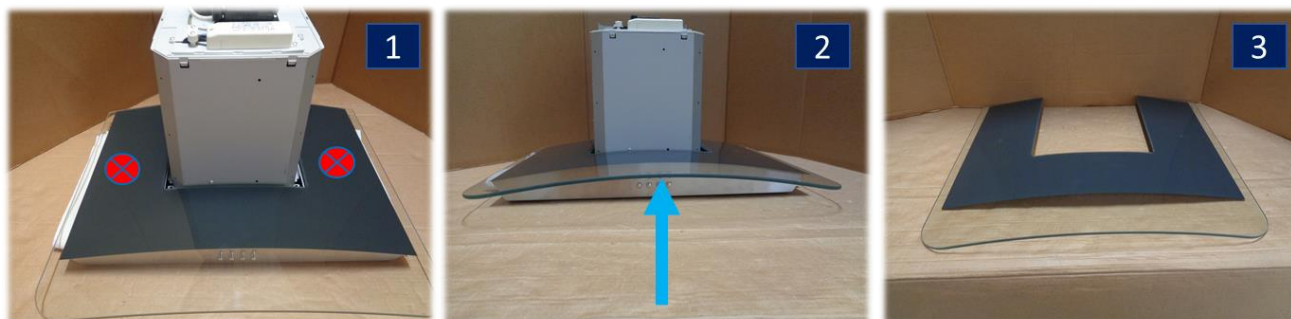
4.3 Feeder Cable

1. Unfasten 2* screws which secure the **FC** clamp to the power box.
2. Unfasten 1* screw which secure the power box cover.
3. Loosen 2* screws which secure the **FC** to the junction clamp.
4. The **FC** removed.



4.4 Glass

1. Unfasten 2* screws which secure the glass to the hood chassis.
2. Lift the glass.
3. The glass removed.

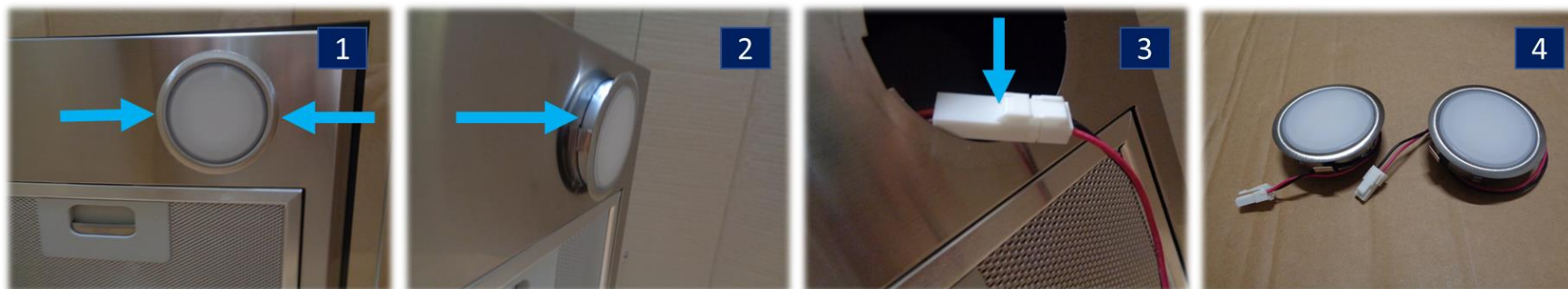


4.5 Lamp

! Use a thin plastic tool to avoid scratches on the hood shell

! Replace one lamp at a time

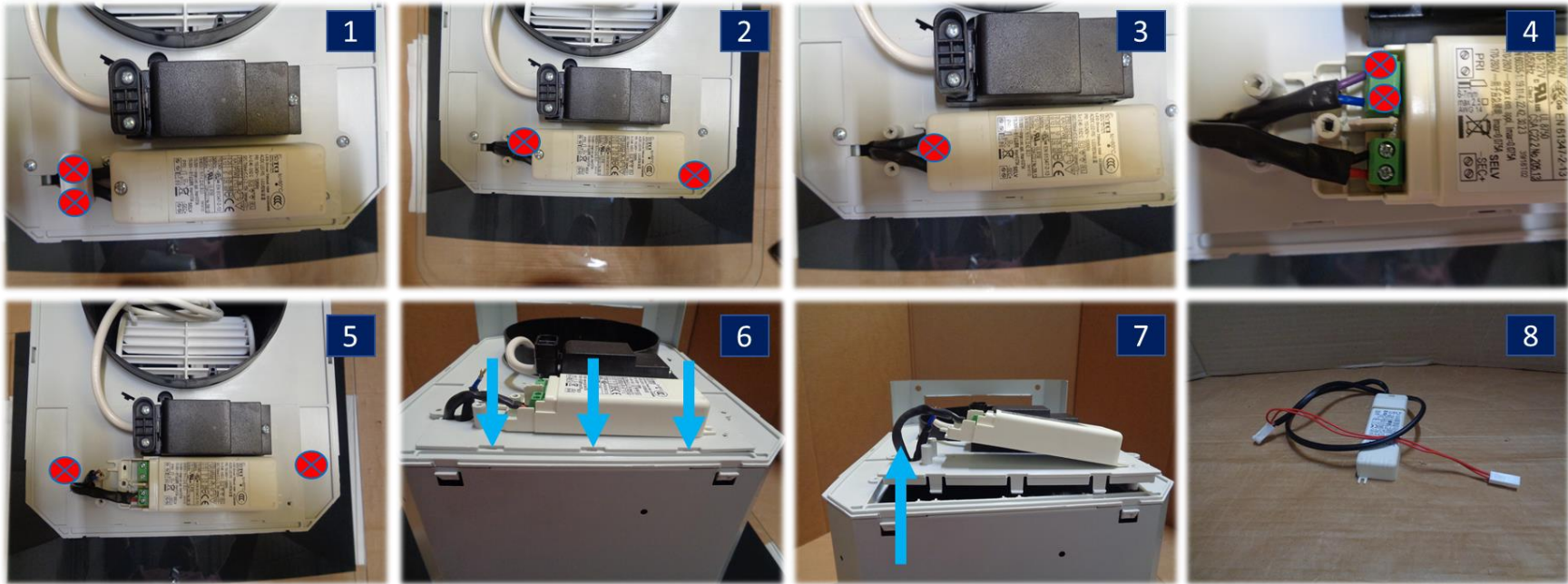
1. Press sequentially from both sides to unsnap the lamp.
2. Extract the lamp.
3. Unsnap the lamp connector.
4. The Lamp removed.



4.6 Led Driver

Perform chapter [4.1](#), chapter [4.2](#), the 2nd step of chapter [4.3](#), (4th , 5th , 6th and 7th) steps of chapter [4.8](#) and 3rd step of chapter [4.5](#)

1. Unfasten 2* screws which secure the [LD](#) clamp to the [LD](#) holder.
2. Unfasten 2* screws which secure the [LD](#) to the [LD](#) holder.
3. Unfasten 1 screw which secure the [LD](#) cover.
4. Loosen 2* screws which secure the [LD](#) power cables.
5. Unfasten 2* screws which secure the [LD](#) holder to the conveyor box cover.
6. Unsnap the [LD](#) holder.
7. Extract the [LD](#).
8. The [LD](#) removed.



4.7 Blower Assembly

	MAX Speed	3 rd Speed	2 nd Speed	MIN Speed	Label
Motor Power(W) EC 20	70	-----	63	58	<div style="border: 1px solid black; padding: 5px;"> <p>Best</p> <p>Model : EC20_2.3.1.05 Best code: 02310819A 220-240V~50 Hz CL.F 120W Cap.: 4µF CW</p> <p style="text-align: center;">CE</p> <p>Thermally Protected</p> </div>

Perform chapter [4.1](#) and chapter [4.2](#)

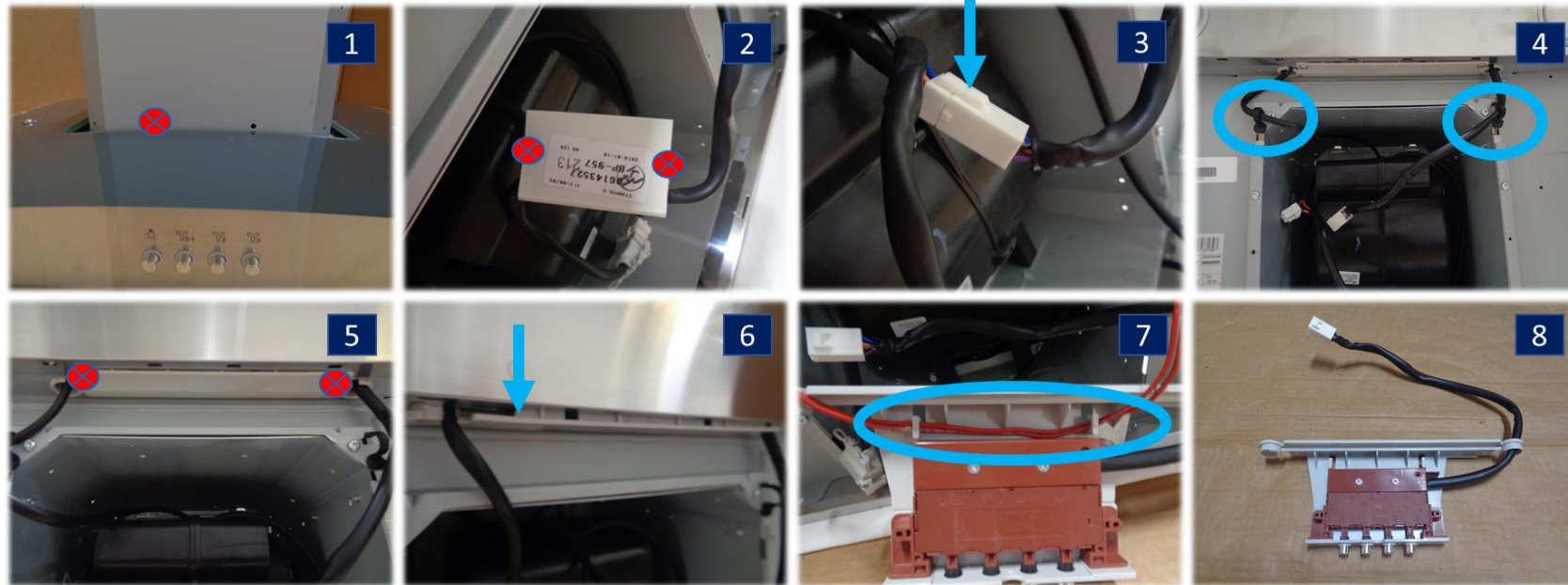
1. Unsnap the [BA](#) power connector.
2. Unfasten 2* screws which secure the [BA](#) to the hood chassis.
3. Extract the [BA](#).
4. The [BA](#) removed.



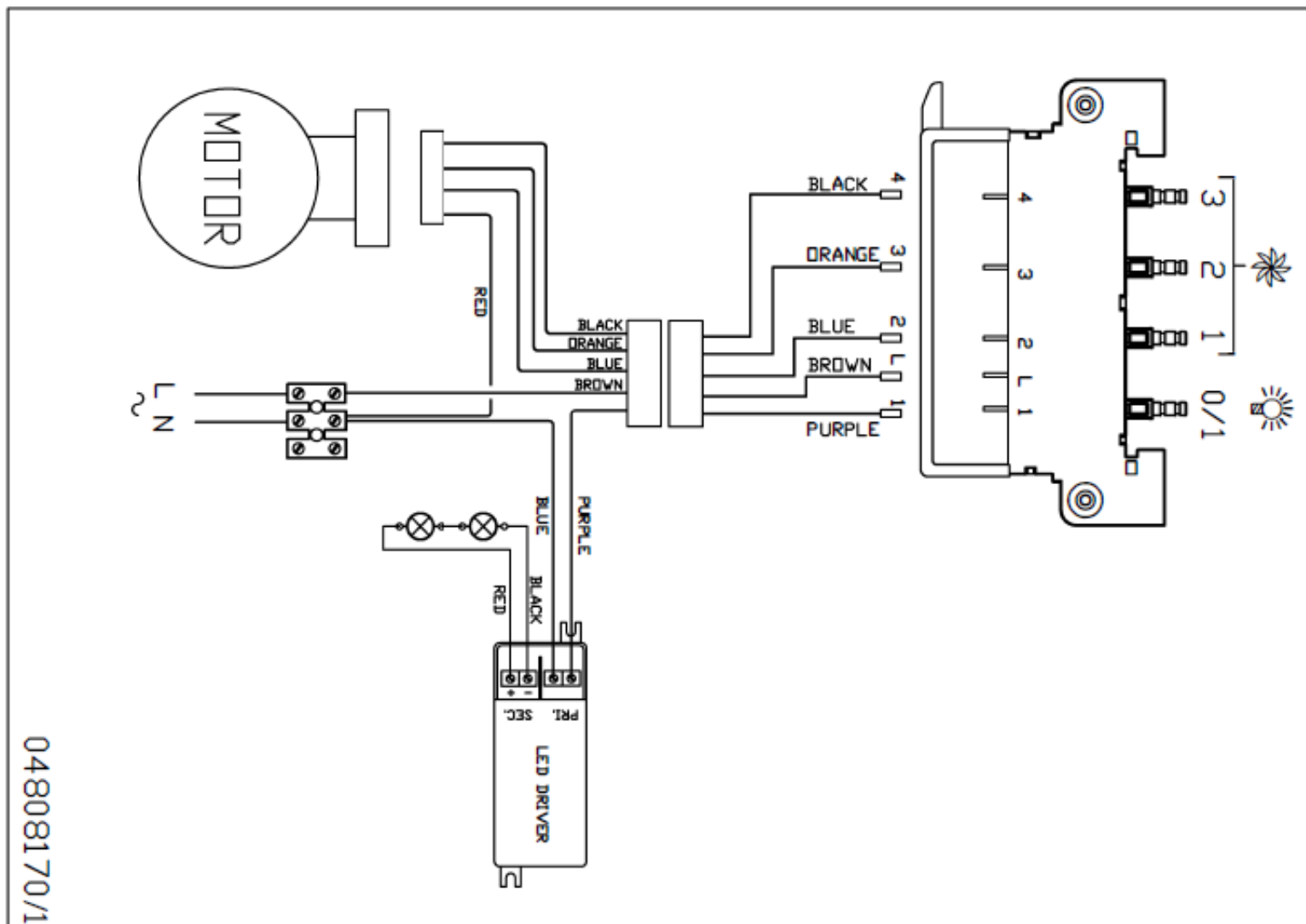
4.8 Control Assembly

Perform chapter [4.1](#), chapter [4.2](#), the 2nd step of chapter [4.3](#) and 1st step of chapter [4.6](#)

1. Unfasten 1* screw which secure the [CA](#) power connection box to the hood chassis.
2. Unfasten 2* screws which secure the [CA](#) power connection box cover.
3. Unsnap the [CA](#) power connector.
4. Unsnap the cable holders.
5. Unfasten 2*screws which secure the [CA](#) to the hood chassis.
6. Extract the [CA](#).
7. Unsnap the lamp cables.
8. The [CA](#) removed.



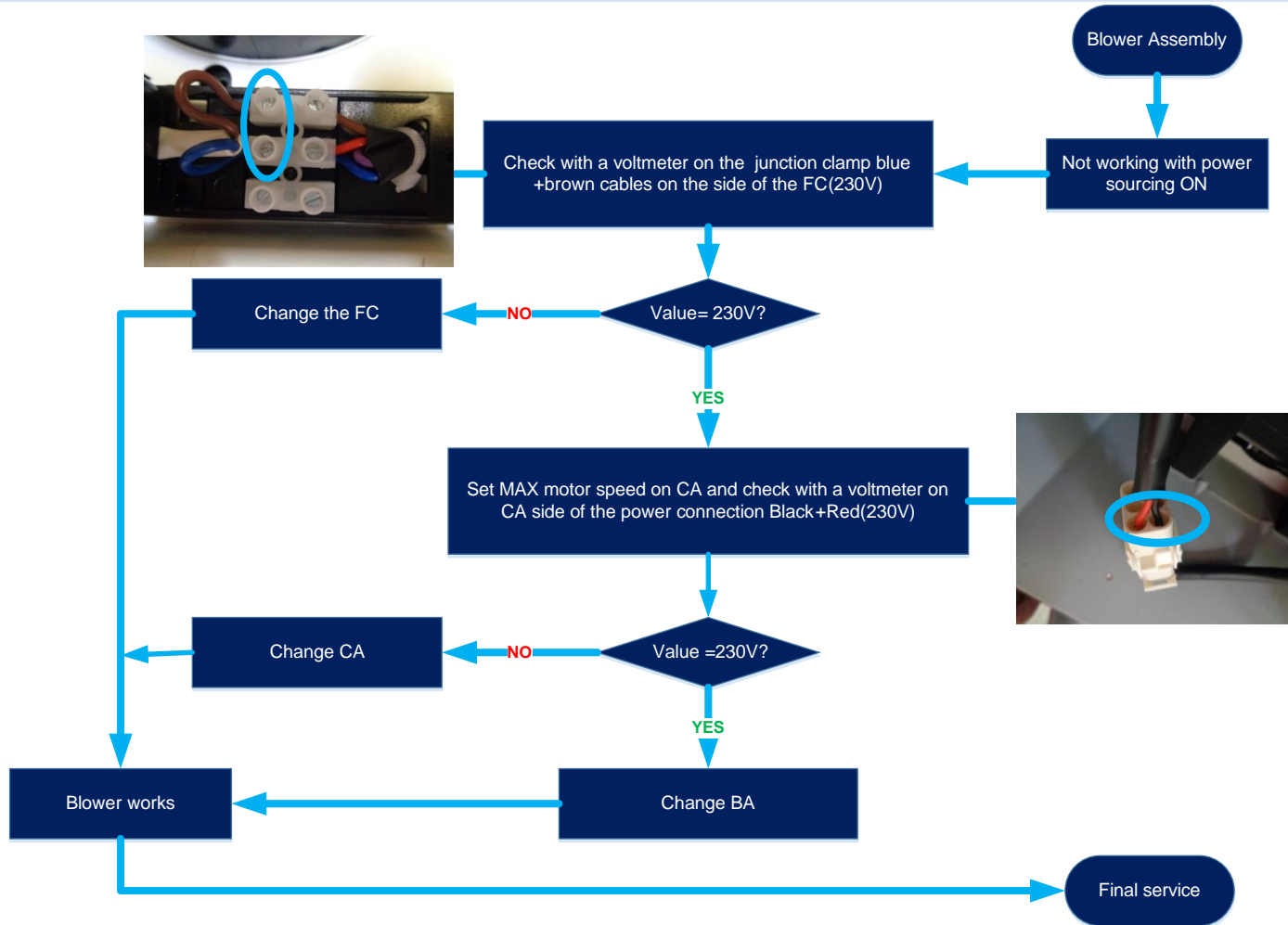
5 ELECTRICAL WIRING



6 TROUBLESHOOTING

Term	Feeder Cable	Control Assembly	Blower Assembly
Initial	FC	CA	BA

6.1 Blower Assembly



6.2 Lamp

