



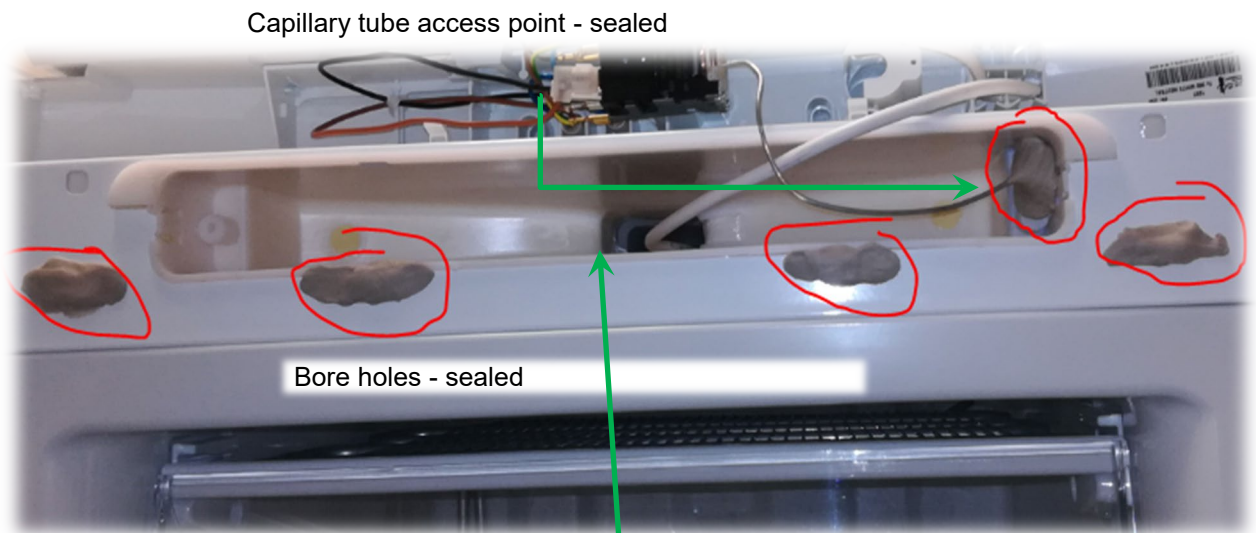
ICING ISSUE HARD TO OPEN / RE-OPEN THE DOOR ON FZ260 FREEZERS

SOLUTION:

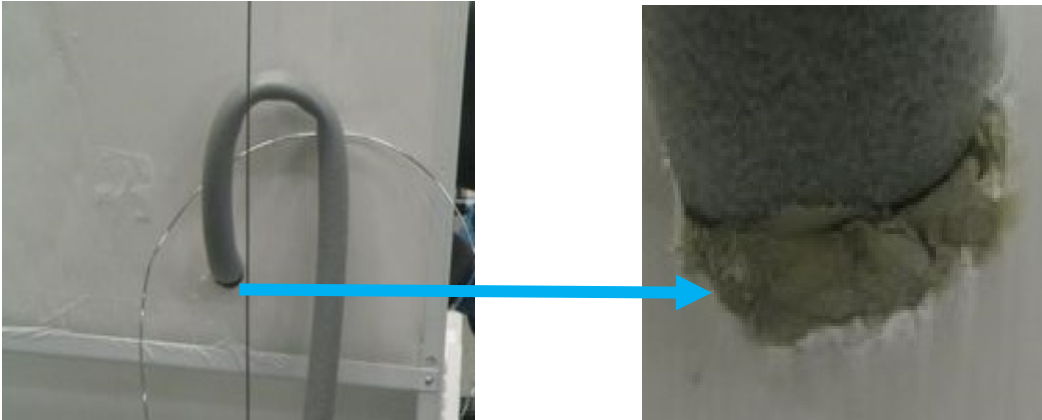
1. Apply additional insulation to avoid ice formation.
2. Insert a service valve to decrease the pressure level increased due to the added insulation.

1. Apply additional insulation to avoid ice formation:

1/1 Use rubber mastic to seal the access point of the capillary tube, the bore holes on the top panel and the back of the suction tube.



1/2 Seal the suction tube



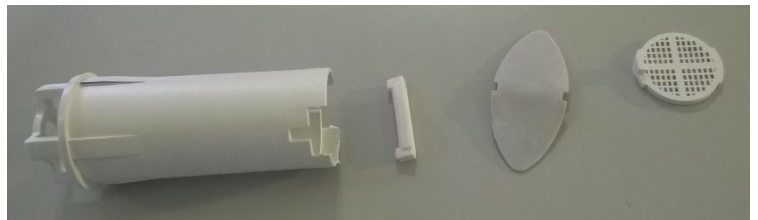
2. Insert service valve:

This solution decreases the pressure level in the appliance.

Spare parts:

4055269494 Valve, Kit

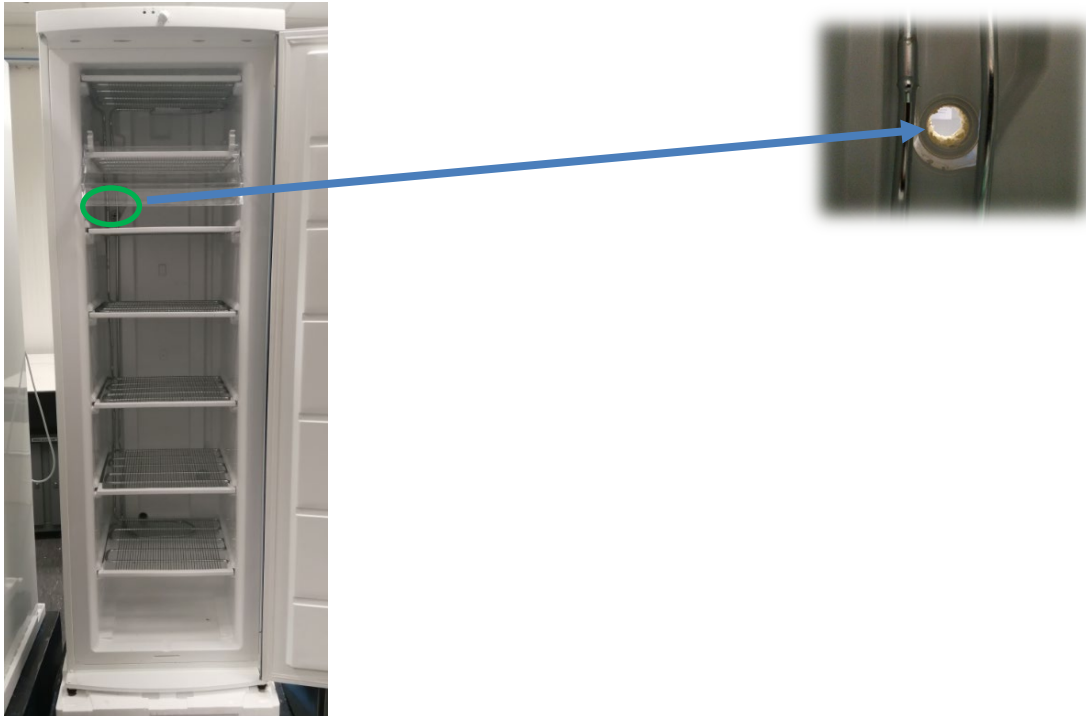
8961482463 Rubber mastic (Putty)



2/1 Remove the screws from the back of the appliance and pull back the WOT condenser. Be careful. Do not harm the brazing joints!



2/2 Carefully bend the tubes and drill a Ø27mm hole in the inner liner.



2/3 Insert the valve and re-align the tubes.

Assemble the valve according to the instructions in the kit.



2/4 Wrap the valve with aluminium adhesive tape on the back of the appliance.
Then re-assemble the WOT condenser to the back of the appliance ensuring the integrity of the brazing joints.



Affected PNCs:

PNC	Base model
925 052 5xx	Fz260

Use the following QES Codes when reporting the Service Order:

Component	167: Vacuum valve 161: Drip channel/tube
Defect	94: Too much ice 07: Jammed

Spare parts:

4055269494 Valve, Kit
8961482463 Rubber mastic (Putty)

REVISION:

Revision	Date	Description	Author	Approved by - on
00	12/2019	Document creation	Anna Grimlund	Gábor Rotics