

HARD TO OPEN THE DOOR OF THE FRIDGE OR FREEZER

DESCRIPTION:

The door of the freezer or refrigerator is hard to open.

SOLUTION:

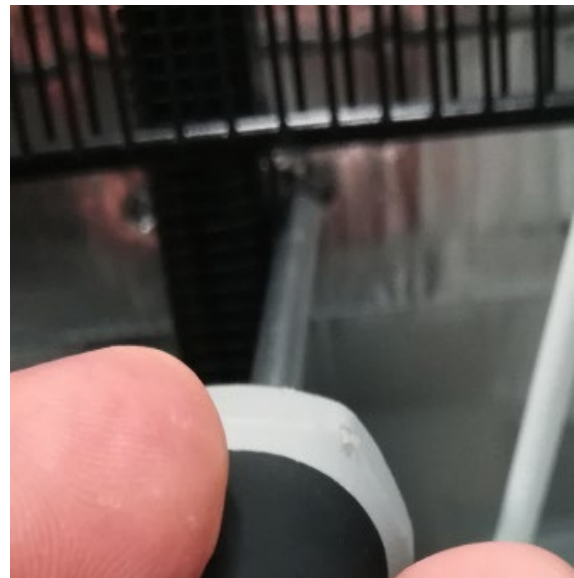
The solution is to decrease the vacuum level, fix the drain tube or to change the handles to quick release handles. The different solutions depends on the appliance or local situation conditions, see the PNC table at the beginning of each solution.

1. Fix the drain tube to the water tray
2. Punch holes in the door seal
3. Cut the end of the drain tube to an angle of 45°
4. Insert a service valve in the inner liner
5. Exchange handle to quick release handle

SOLUTION 1 – Fix the drain tube to the water tray

Models concerned

Base Model	PNC
RF330	925 041 7xx
RF400	925 052 0xx, 925 052 1xx
RF400DME	925 052 2xx



1. Create a hole on the left and right side of the drain tube.



2. Fasten the drain tube with the spare part Fixing for tube (2230266021)



3. Remove the flap from the spare part Water drain valve (2615052020)
4. Push the Water drain valve on the drain tube



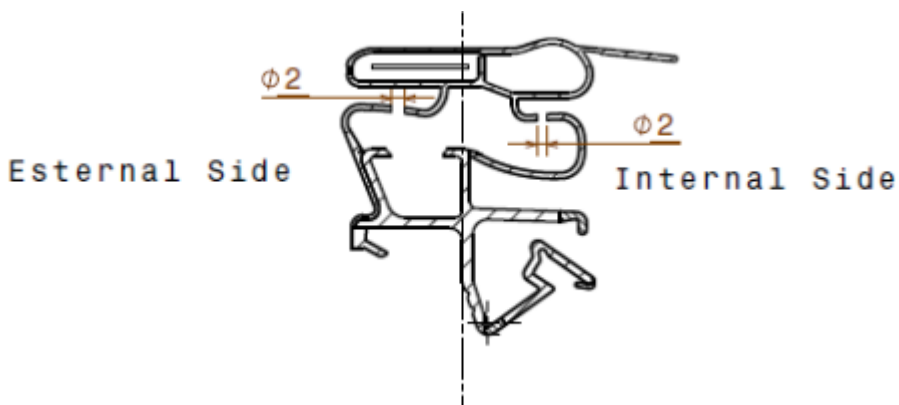
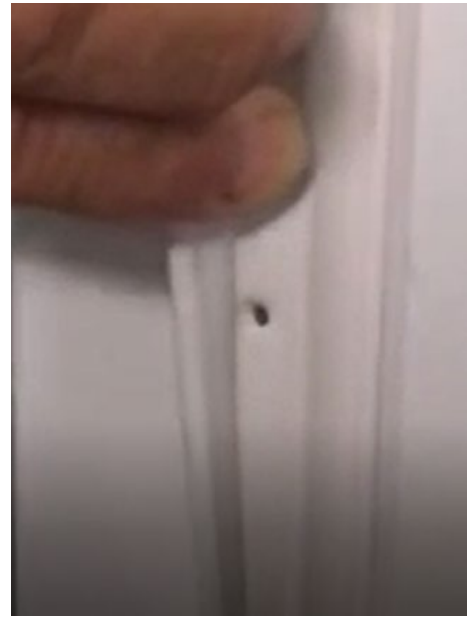
Spare parts: Water drain valve 2615052020
Fixing for tube: 2230266021

5. Fasten the valve on the water tray

Use the following QES Codes when reporting the Service Order:

Component	161: Drip channel/tube
Defect	07: Jammed

SOLUTION 2 – Punch holes in the door seal Fridges and Freezers only



Use the following QES Codes when reporting the Service Order:

Component	205, 225 - gasket
Defect	07-jammed

SOLUTION 3 – Cut the end of the drain tube to an angle of 45°

Models concerned

Base Model	PNC
RF330	925 041 7xx
RF400	925 052 0xx, 925 052 1xx
RF400DME	925 052 2xx
RF360	925 070 4xx



1. Take out the drain tube at the back of the appliance.



2. Drill a hole in the drain tube or cut the end of the drain tube to an angle of 45°.



3. Re-position the drain tube so that the end of the drain tube is lower than 1 mm from the top of the tray.

Use the following QES Codes when reporting the Service Order:

Component	161: Drip channel/tube
Defect	07: Jammed

SOLUTION 4 – Insert a service valve in the inner liner

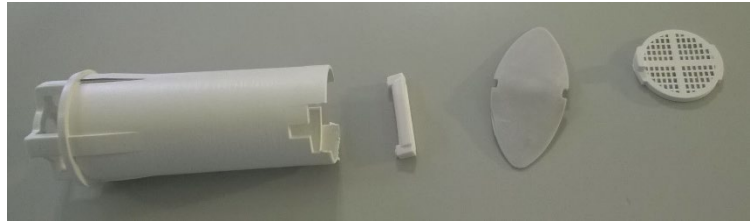
Models concerned

Base Model	PNC
RF400	925 052 0xx, 925 052 1xx
RF380DME	925 052 3xx
FZFF280	925 052 9xx
FZFF240	925 070 2xx

Spare parts:

4055269494 Valve, Kit

8961482463 Rubber mastic (Putty)



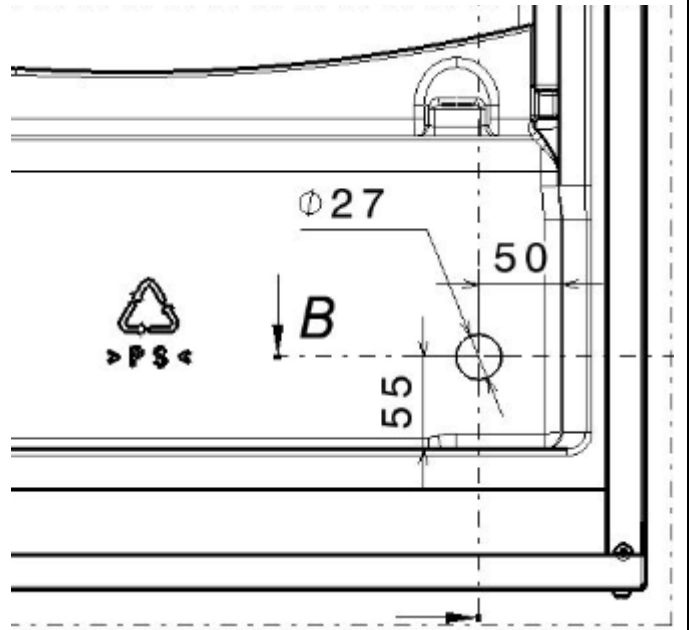
1. Drill a 27 mm hole in the inner liner in the position specified in the tables below.
2. Assemble the valve according to the instructions in the kit and insert the valve.

Refrigerator RF400

PNCs 9250520xx, 9250521xx

Refrigerator RF380DME

PNCs 925053xxx



Freezer FZFF280
Freezer FZFF240

PNCs 9250529xx
PNCs 9250702xx



Drill the hole on the left side of the inner liner:

50 mm from the bottom and 20 mm from the side.

3. Inspect the valve from the compressor area and ensure that there is a protrusion of the valve.
 - The protrusion is necessary to avoid moisture in the foam.
4. Seal the valve from the compressor area.
 - Do not use sealing inside the cabinet and be careful not to obstruct the grid of the valve.



Use the following QES Codes when reporting the Service Order:

Component	167: Vacuum valve
Defect	07: Jammed

SOLUTION 5 – Exchange the handle to quick release handle

Models concerns

Base Model	PNC
Fz220, FzFF200, RF300	925 041 xxx
FZ250	925 070 0xx
FZFF240	925 070 2xx
RF360	925 070 4xx

Installation of the new handle depends on the spare part used, see table of available handles.
For side-by-side installations, see instructions below.



Original handle



Example of a quick release handle

Side-by-side installations using spare parts:

2083903142, 2082100062 or 2083903159



Start with handle to go on the right side appliance.

1. Mark the position of the new upper hole, - 10 mm **above** the original upper hole.



2. Drill the hole using a 2.5 mm drill.



3. Fix the first screw.



4. Drill a new hole in for the lower fastening.



Fix the second screw and cover the original hole with the plastic pin in the kit.



Then do the second handle on the appliance on the left



1. Mark the position of the new lower hole,
- 10 mm **below** the original lower hole.
2. Continue as described for the first handle.

Door handle part numbers:

Each spare part contains one handle.

2086099047 White and grey Freezer
Door Handle



2086099062 Dark grey Vertical
Freezer Door Handle



2083929022 White and grey
Refrigerator Vertical Door
Handle



2651059020 White Freezer Door Handle



2651051100 White and silver Fridge / Freezer Door Handle



2083903142 White Freezer Vertical Door Handle Assembly – side-by-side installations



2082100062 White Refrigerator Door Handle - side-by-side installations



2083903159 Dark grey Handle - side-by-side installations – (only available in some markets)



Other spare parts:

14005072701	Levelling foot, rubber, 30x38mm Use to avoid that the appliance slides – order 2 per appliance
5190910207	Screw, white, 5x16mm Order two per handle to exchange.
2063004002	Rivet, hole cover, white, 7801, 8x12mm. 1 piece.

Use the following QES Codes when reporting the Service Order:

Component	227
Defect	07

REVISION:

Revision	Date	Description	Author	Approved by
00	12/2019	This service bulletins replaces service bulletins: 599809593 599812561 599813945 599814719	Anna Grimlund	Judit Hudákné Szabó
01	12/2019	Updated with two new service solutions	Anna Grimlund	Judit Hudákné Szabó