

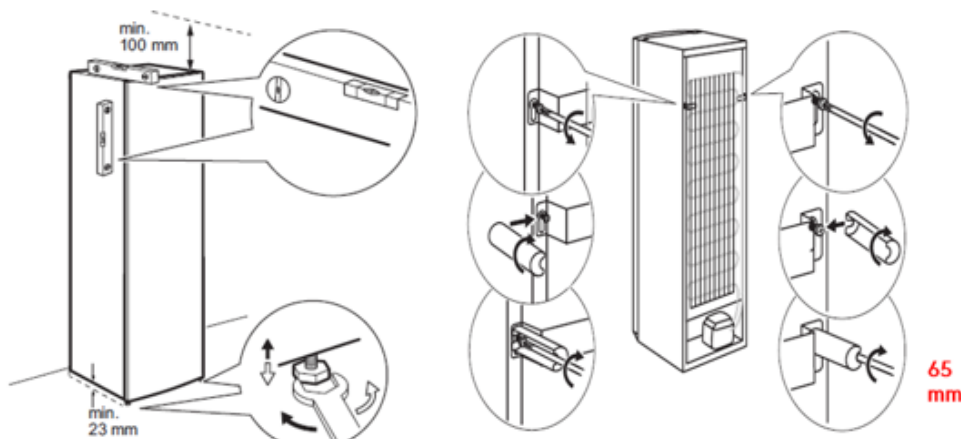
ICE FORMATION IN THE TOP OF THE FREEZER

DESCRIPTION:

There is an excess amount of ice formation in the top of the freezer in side-by-side and niche installations.

SOLUTION:

- Defrost the appliance fully and dry it.
- Check the distance between the appliance and the back wall according to the image below.
 - There must be gap of 65 mm to the back wall.
 - Check also the space between the appliance and the furniture at the top and the floor.



Installation instructions

Note: Make sure that the appliance is completely dry before starting the appliance.

Use the following QES Codes when reporting the Service Order:

Component	112,205,902
Defect	10,52,87,

MODELS INVOLVED:

Fz260 -> 925 052 5xx

REVISION:

Revision	Date	Description	Author	Approved by - on
00	09/2019	Document Creation	Anna Grimlund	Attila Héri/ Judit Hudákné Szabó