



# Electrolux

## SERVICE MANUAL

### Food Preservation

# FFR32GFE

#### Document Revisions

| Rev. | Date    | Description       | Author      |
|------|---------|-------------------|-------------|
| 00   | 05/2019 | Document creation | Rui Almeida |

EN

Publication number  
599 83 05 - 86  
Edition: 05/2019 - Rev. 00

FOR INTERNAL AND PARTNERS USE ONLY

© ELECTROLUX HOME PRODUCTS  
Consumer Service - EMEA  
Quality & Continuous Improvement - Technical Support

|  |                              |  |
|--|------------------------------|--|
|  | <b>DOUBLE DOOR 345 – 400</b> |  |
|  | <b>SAFETY</b>                |  |



- All the work to be performed inside the appliance requires specific skills and knowledge and may only be carried out by qualified and authorised Service Engineers
- Before you access internal components, take the plug out of the socket to disconnect the power supply.
- Some of the components in the mechanical part could cause injuries, so wear suitable protection and proceed with caution.

|  |                                   |  |
|--|-----------------------------------|--|
|  | <b>DOUBLE DOOR 345 – 400</b>      |  |
|  | <b>ASSEMBLE &amp; DISASSEMBLE</b> |  |

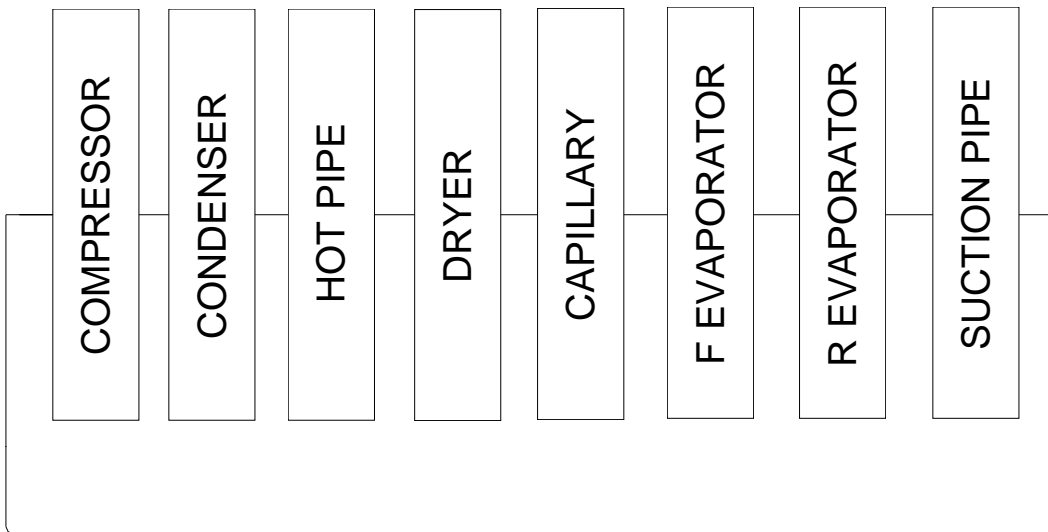
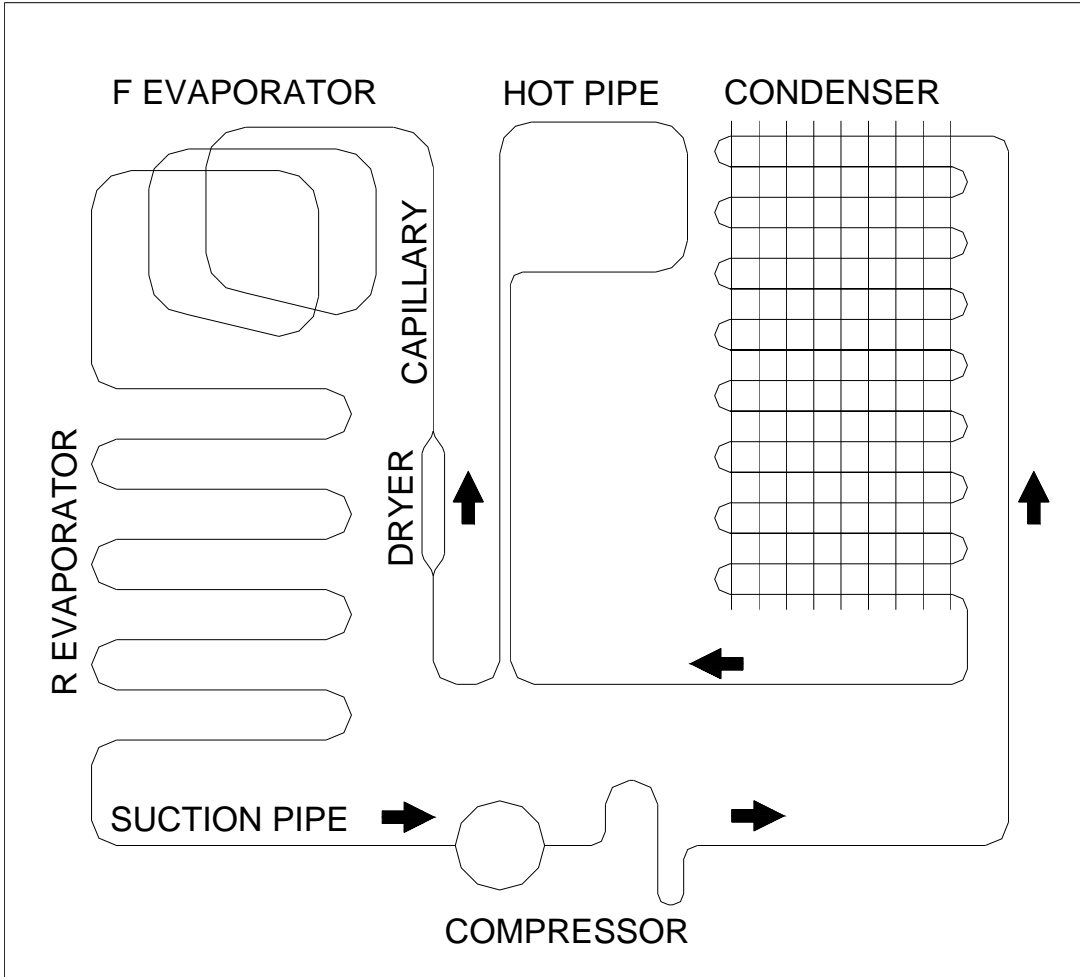
### **A - Changing The Thermostat :**

- 1) Remove the lamp cover and unscrew the fixing screw.
- 2) Remove the thermostat box by pulling it and disconnecting the cable terminals.
- 3) Remove the thermostat knob by pulling forward. Loosen the nut which is fixing the thermostat.
- 4) Pull out the thermostat bulb from the housing.
- 5) Replace the thermostat with the new one and assemble the thermostat box following the steps backwards.

### **B - Thermostat Knob**

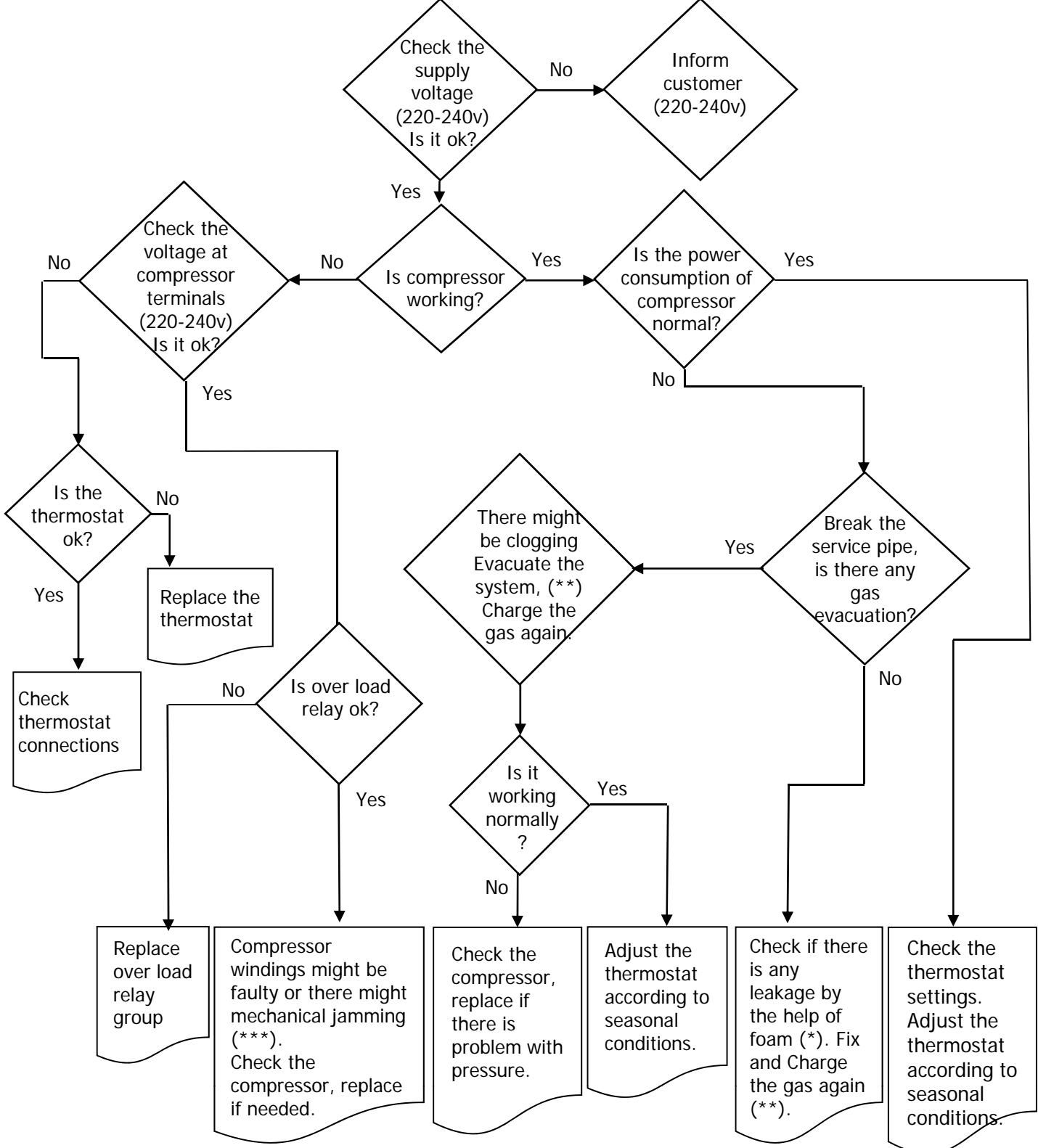
- This knob is used to control the temperature of the freezer and refrigerator parts automatically. It can be set to any value between “0” and “5” positions.
- “0” position indicates that the thermostat is “off”. The refrigerator is “off” on this setting.
- By turning the knob between “1” and “5”, you can increase or decrease the cooling degree.
- The refrigerator is designed to get optimum performance when the thermostat knob is set between position “2” to “4”.

|  |                                  |  |
|--|----------------------------------|--|
|  | <b>DOUBLE DOOR 345 – 400</b>     |  |
|  | <b>REFRIGERANT CYCLE DIAGRAM</b> |  |



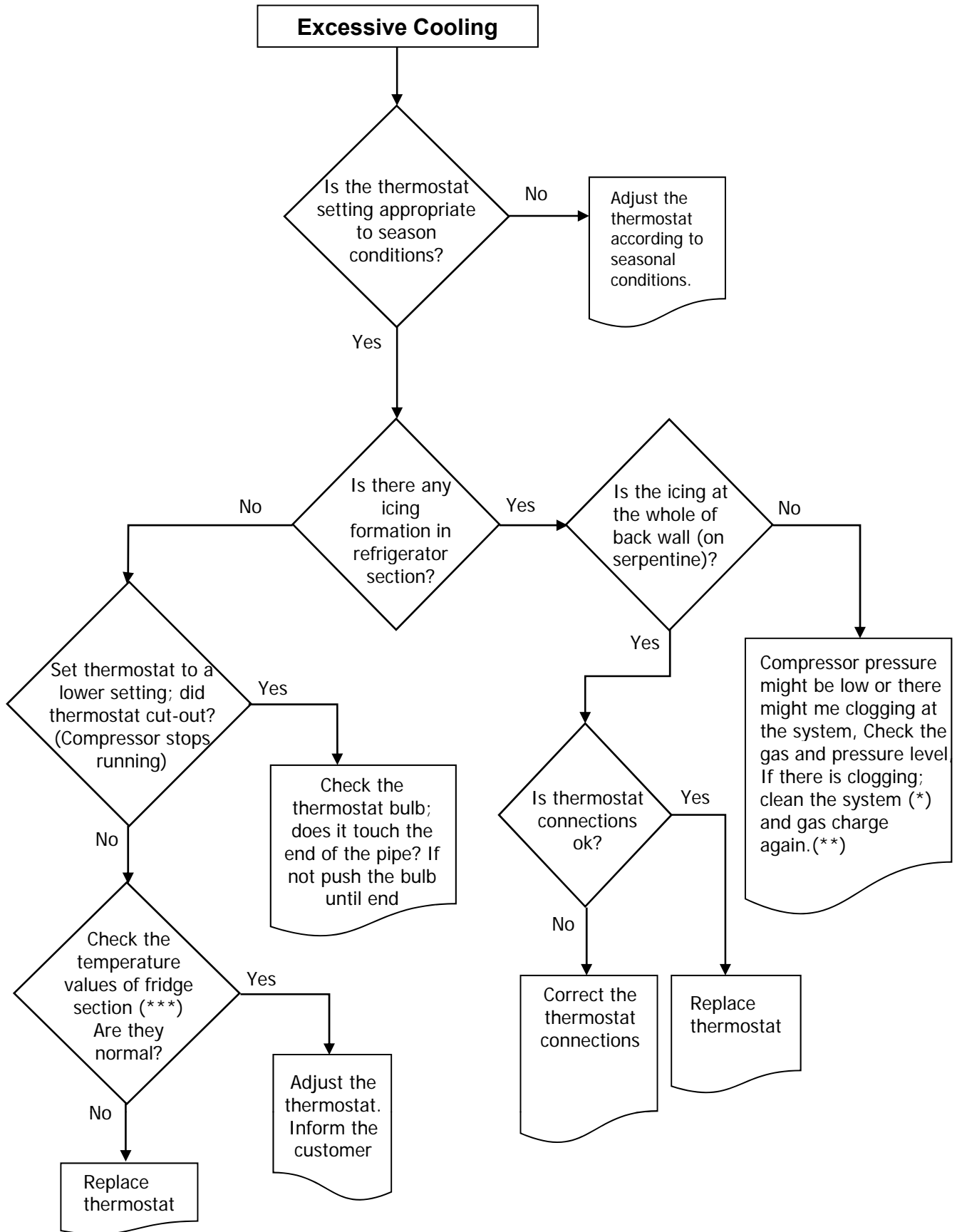
|  |                               |  |
|--|-------------------------------|--|
|  | <b>DOUBLE DOOR 345 – 400</b>  |  |
|  | <b>TROUBLE-SHOOTING CHART</b> |  |

**No/Insufficient cooling**

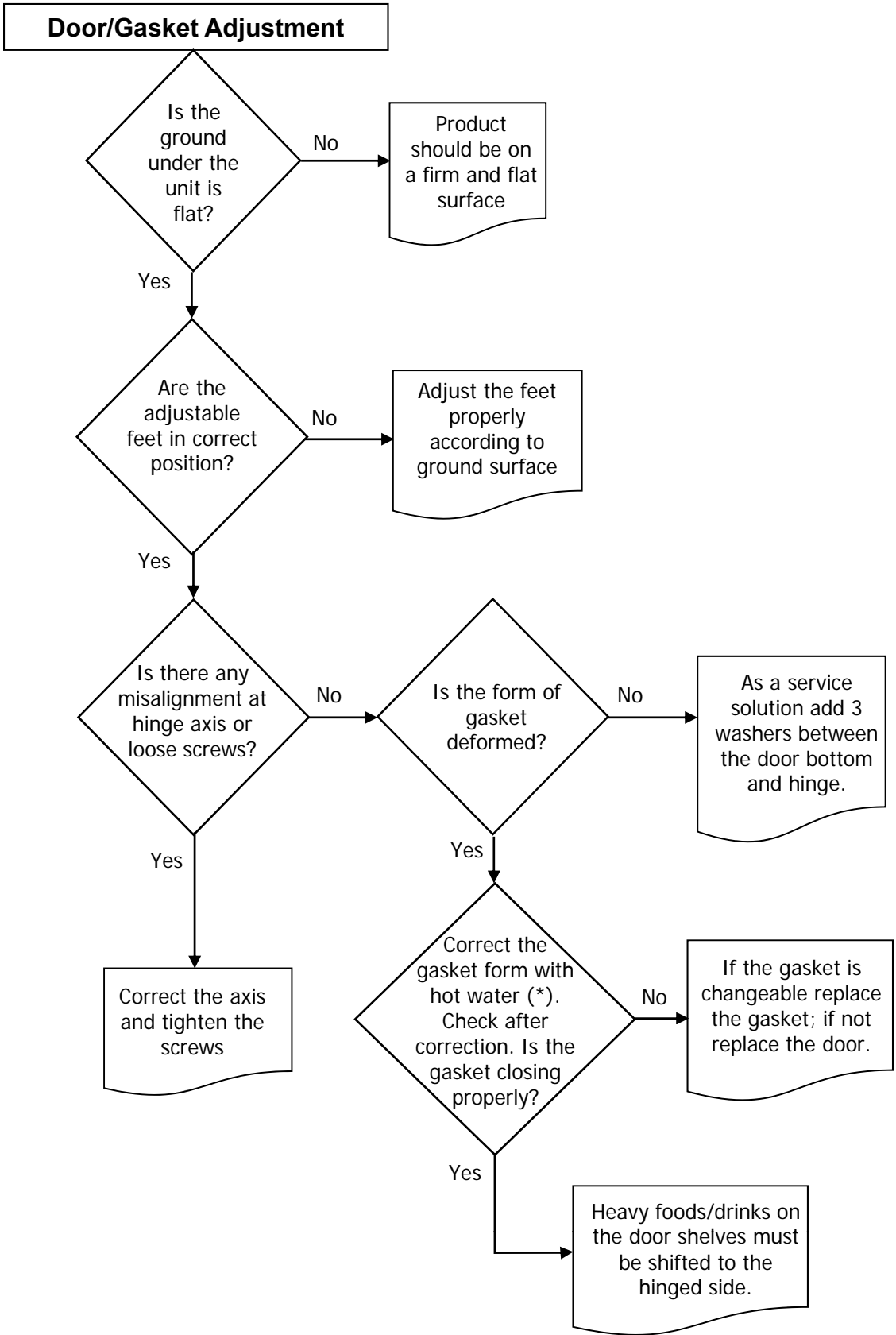


**(\*) Check all pipes, tubes and welding points against gas leakage. (\*\*) Before charging gas to system, change dryer and vacuum at least 30 minutes, then charge the system with amount written on label (\*\*\*) Compressor primary winding should be around 10 Ω and secondary around 15 Ω (at 25°C ambience temp.)**

|  |                               |  |
|--|-------------------------------|--|
|  | <b>DOUBLE DOOR 345 – 400</b>  |  |
|  | <b>TROUBLE-SHOOTING CHART</b> |  |



|  |                        |  |
|--|------------------------|--|
|  | DOUBLE DOOR 345 – 400  |  |
|  | TROUBLE-SHOOTING CHART |  |



**(\*) Correct the gasket form by the help of hot water and hair dryer.**

|  |                               |  |
|--|-------------------------------|--|
|  | <b>DOUBLE DOOR 345 – 400</b>  |  |
|  | <b>TROUBLE-SHOOTING CHART</b> |  |

