



© E.H.P. Floor Care

Number of
publication

EN

Pure C9

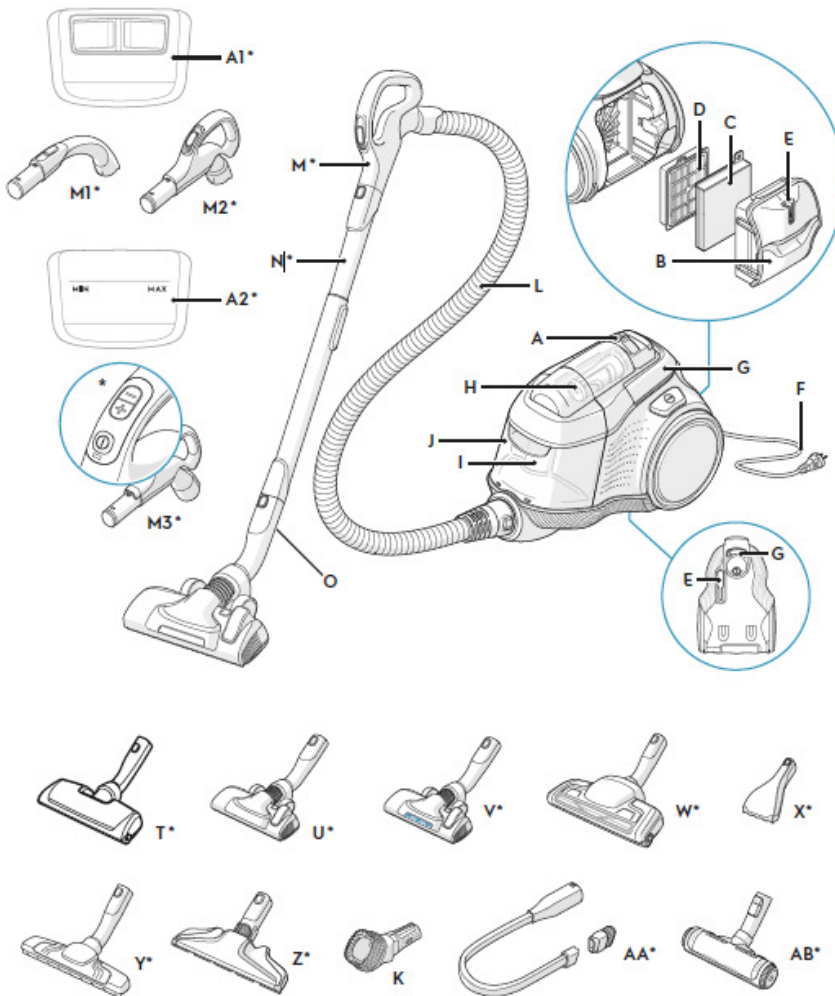
**Factory:
HUV**

Edition: 2019

TABLE OF CONTENTS

| | | |
|-----|-----------------------------|----|
| 1 | General description | 3 |
| 1.2 | Exploded view..... | 4 |
| 2 | ACCESSIBILITY..... | 5 |
| 3 | Electronic Control | 6 |
| 3.1 | Motor power regulation..... | 6 |
| 3.2 | RF transmitter... .. | 6 |
| 3.3 | Electronic layout..... | 8 |
| 4 | Trouble shooting..... | 10 |

1 General description



* Accessories may vary from model to model.

- A.** Display
 - A1 rotary knob control*
 - A2 remote control*
- B.** Filters lid
- C.** Fine dust filter
- D.** Pre-motor filter
- E.** Parking slots
- F.** Power cord
- G.** Carry handle
- H.** Cyclone compartment and nose cone filter
- I.** Air channel
- J.** Dust compartment
- L.** AeroPro hose
- M.** AeroPro handle
 - M1 AeroPro Classic handle*
 - M2 AeroPro Ergo handle*
 - M3 AeroPro Remote Control handle*
- N.** AeroPro telescopic tube
- O.** Parking clip

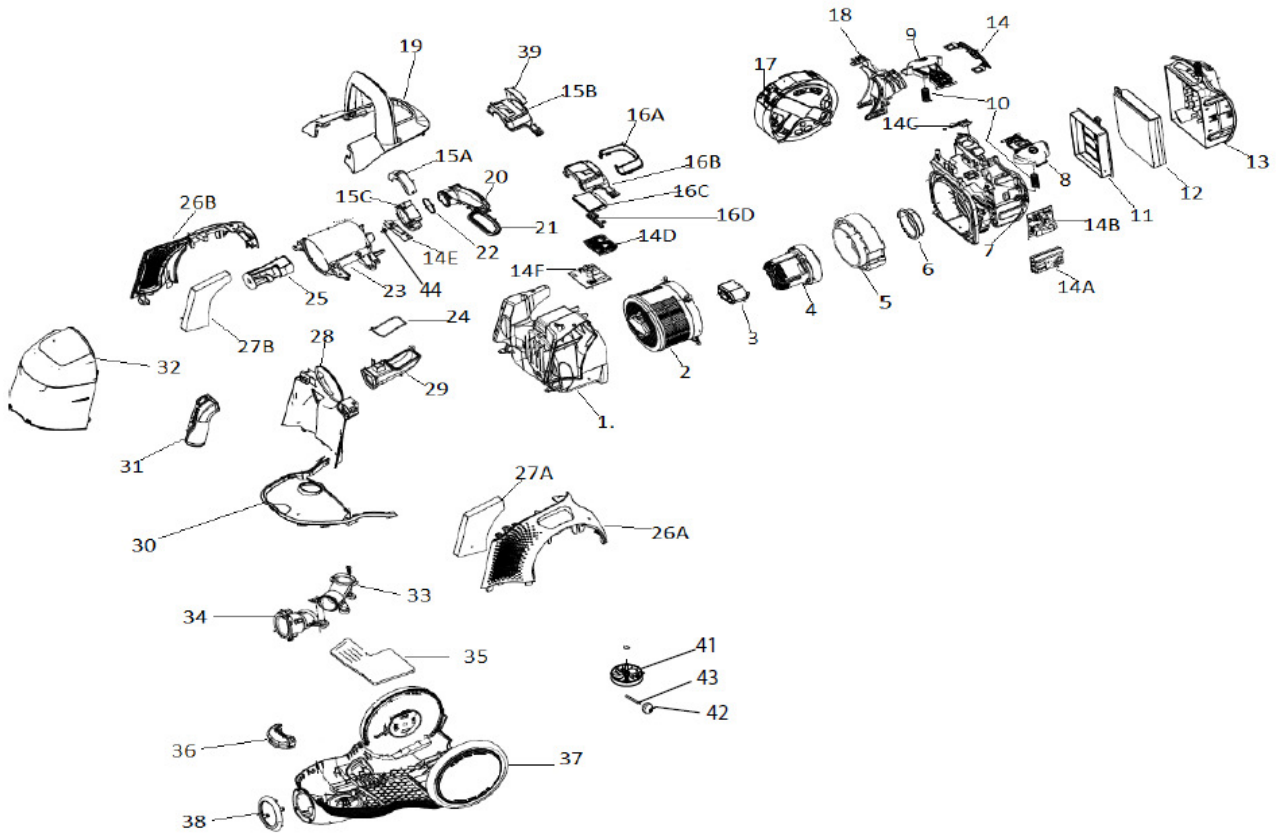
Nozzle Accessories

- K.** AeroPro 3in1 tool
- T.** Motorized nozzle*
- U.** FlowMotion nozzle*
- V.** FlowMotion LED nozzle (with front lights)*
- W.** AeroPro Turbo nozzle*
- X.** AeroPro Mini Turbo nozzle*
- Y.** ParkettoPro nozzle*
- Z.** AeroPro FlexProPlus nozzle*
- AA.** AeroPro Long crevice nozzle*
- AB.** BedPro nozzle*

* Selected models only

1.1 Exploded view

Service parts



| Denomination | Position |
|------------------------|----------|
| MOTOR HOUSING | 7 |
| LID MOTOR | 1 |
| MOTOR | 4 |
| BELLOW | 6 |
| SUSPENSION RING | 5 |
| SUSPENSION PIN | 3 |
| SEALING MOTORHOUSE | 999 |
| ABSORBER OUTLET LEFT | 27A |
| ABSORBER OUTLET RIGHT | 27B |
| ABSORBER MOTORHOUSE | 35 |
| HOLDER CORD WINDER | 18 |
| CORD WINDER | 17 |
| LID LEFT | 26A |
| LID RIGHT | 26B |
| PEDAL ON/OFF | 8 |
| PEDAL CORD WINDER | 9 |
| SPRING PEDAL | 10 |
| BUTTON POWER REGULATOR | 15C |
| OUTER POWER REGULATION | 15A |
| FRAME POWER REGULATION | 15B |
| LID DISPLAY | 16A |
| HOLDER PCB | 16B |
| DISPLAY FNA | 16C |
| LIGHTGUIDE | 16D |
| PCB | 14A |
| PCB PEDAL | 14C |

| Denomination | Position |
|-----------------------------|----------|
| PCB SLIDER | 14E |
| PCB DISPLAY | 14D |
| PCM 2G AKTIV | 14F |
| PCB MAIN POWER MODUL | 14B |
| ADAPTER | 999 |
| LOWER PART WITH WHEELS | 37 |
| HANDLE LOWER PART | 36 |
| LID LOWER PART | 30 |
| LID REAR | 40 |
| LID DECORATION | 39 |
| AIRCHANNEL CYCLONE INNER | 29 |
| SEALING AIRCHANNEL CYCLONE | 24 |
| AIRCHANNEL CYCLONE COMPLETE | 20 |
| SEALING CYCLONE INLET | 22 |
| LID DUSTCONTAINER INNER | 28 |
| HANDLE COMPLETE | 19 |
| LID HOSE CONNECTION | 38 |
| HOSE CONNECTION INNER | 34 |
| AIRCHANNEL | 33 |
| AIRCHANNEL COMPLETE | 31 |
| GRILL FILTER COMPLETE | 13 |
| SEALING GRILL FILTER | 21 |
| DUST COMPARTMENT | 23 |
| CONE DUST COMPARTMENT | 25 |
| DUST CONTAINER | 32 |
| FILTER CASCADE | 12 |
| FILTER HYGIENE | 11 |
| FILTER MOTOR LIFETIME | 2 |

2 ACCESSIBILITY

Please check doc: 599828493EN, where you can find disassembling process that step by step will allow the Technician to completely dismount the vacuum cleaner.

ATTENTION:

**Boards and electronic devices could be damaged by electrostatic discharges.
Don't touch any components without any ESD protection.**

3 Electronic Control

3.1 Motor power regulation

1. Main plug connected:
 - Motor shall be off.
2. First start (after main plug is connected):
 - Motor power starts in Max power position (remote version).
3. Power setting is changed by regulation button:
 - Motor power steps up or down.
4. Cleaner is turned off by On/Off switch:
 - Motor turns off; last power setting is remembered by the microcontroller (remote version).
5. Cleaner is turned on by On/Off switch after being at point 4:
 - Motor turns on, and starts at the last used power setting (remote version).

3.2 RF transmitter

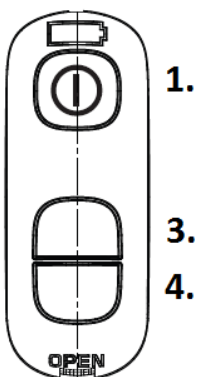
Introduction

The RF transmitter is used as remote control for a vacuum cleaner powered by a 3V changeable lithium cell. The transmitter uses the **2.4 GHz (carry over from Ceres/Artemis)** band for transmitting data inside EU. With the transmitter it is possible to turn the appliance on and off, and regulate the motor power. Estimated lifetime for the battery in normal use is approximately 8-12 months.

Learning

If the PCB has not saved transmitter address – New PCB from supplier

1. Plug in the cord to the main. The motor will fluctuate.
2. Push the buttons in the given combination at the same time (to do this you have 20s after connection to main)
/ 1+4 /
3. If the teaching was successful the cleaner will turn on (1.5s) and after that turns off.
4. The cleaner is ready to use.



Reset

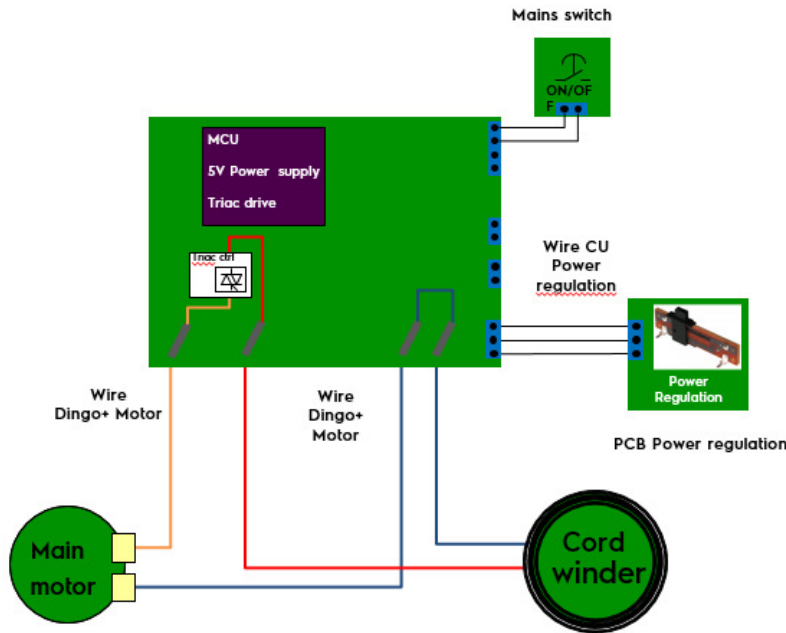
If the receiver has saved transmitter address – New transmitter / New bentend

1. Plug in the cord to the main. Do not turn on.
2. Send Reset signal - 1+3+4 button combination at the same time (to do this you have 20s after connection to main) If the cleaner received the right reset signal it will fluctuate.
3. Unplug the cord from the main.
4. Wait min 5sec.
5. Plug in the cord to the main again. The cleaner should fluctuate.
6. Send teaching signal - 1+3 button combination at the same time (to do this you have 20s after connection to main)
7. If the teaching was successful the cleaner will turn on (1.5s) and after that turns off.
8. The cleaner is ready to use.

3.3 *Electronic layout*

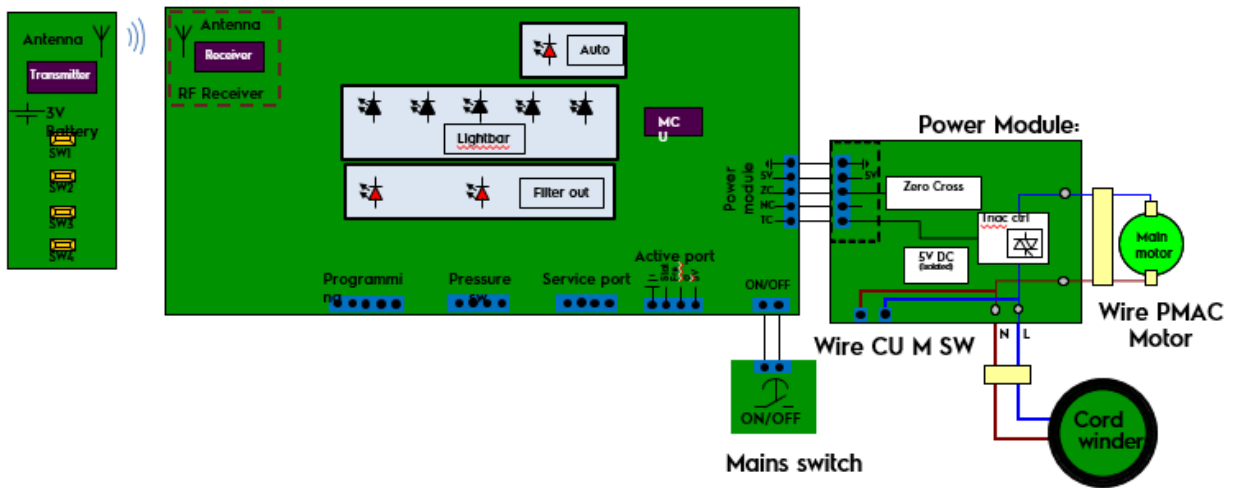
| | | | | | |
|----|--------------------|--|---------|---------|-----------|
| EN | Publication number | | Rev. 01 | 02/2019 | PR - 7/10 |
|----|--------------------|--|---------|---------|-----------|

Fortuna L1 model:



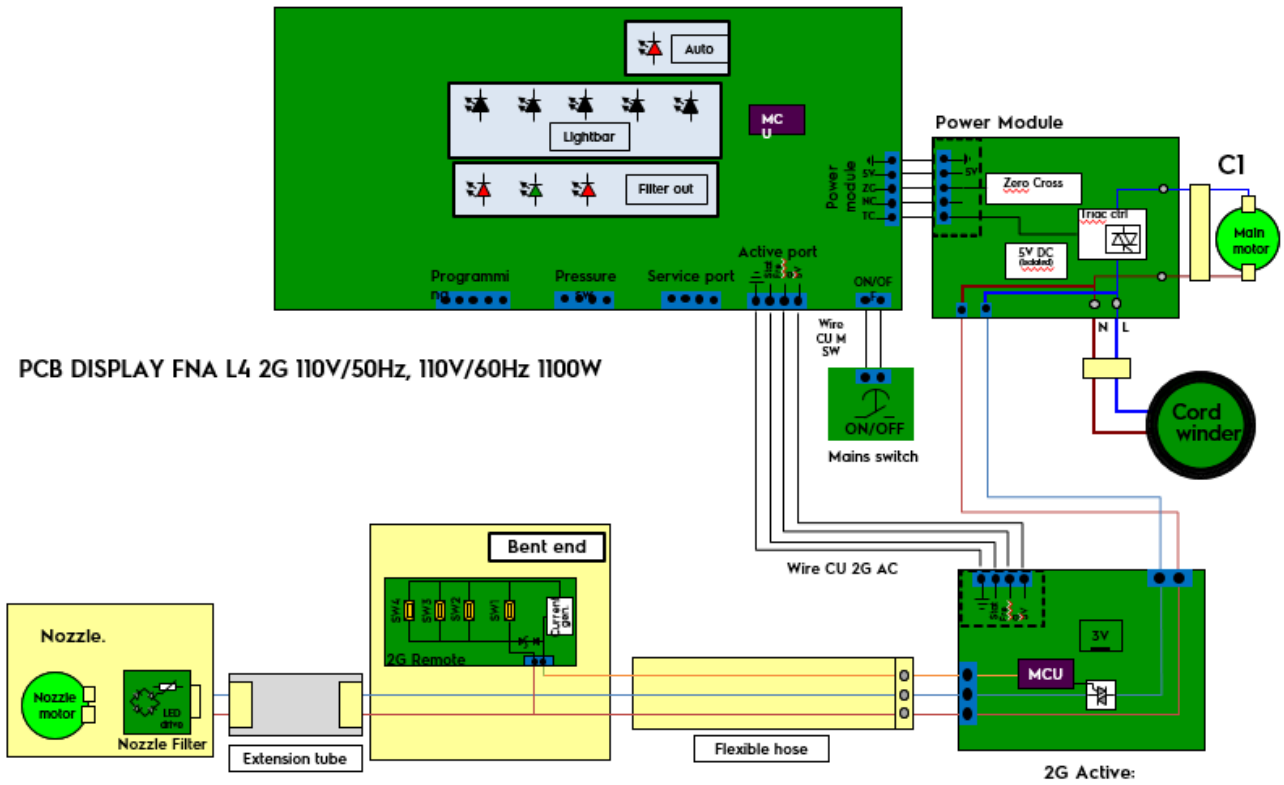
Fortuna L2 model:

RF Transmitter PCB DISPLAY FNA L2 RF 230V/50Hz 650W
 PCB DISPLAY FNA L2 RF 220V/60Hz, 230V/50Hz 1800W



ATTENTION:
 Boards and electronic devices could be damaged by electrostatic discharges. Don't touch any components without any ESD protection.

Fortuna L4 model: Active version with wire remote



ATTENTION:
Boards and electronic devices could be damaged by electrostatic discharges. Don't touch any components without any ESD protection.

4 TROUBLE SHOOTING

| Problem | Checks |
|---|--|
| Cleaner doesn't start | <u>Cleaner without remote:</u> - Investigate if the plastic knob reaches the ON/OFF switch on the PCB. - Replace the control unit (display PCB) |
| | <u>Cleaner with radio remote:</u> - Investigate if both ON/OFF (cleaner and remote) is not working. If remote ON/OFF working, but not cleaner ON/OFF: - Investigate if the plastic knob reaches the ON/OFF switch on the PCB. - Replace the control unit (display PCB). If cleaner ON/OFF working, but not remote ON/OFF: - Investigate if the LED on the remote indicates transmission. If not, change battery and try again. - If still no LED indication on remote, change remote control and reprogram the cleaner according to above instruction. - If LED indicates transmission, try replacing the remote according to above instruction. If cleaner starts, replace the RF remote control. - If still no function, replace the control unit in the cleaner. Be aware of the position of the radio antenna. If replacing the control unit this has to learn the RF-remote address according to above description. If no reaction on any ON/OFF buttons: replace the control unit (display PCB). |
| Loss of suction | <ul style="list-style-type: none"> - Check motor position to be in the centre - Check nose cone blockage in the dust container, clean it - Check for leakages - Check filters to be clean, replace filter if necessary - Check the following: blocked tel. tube, hose or nozzle, air channel |
| Cleaner doesn't start | <ul style="list-style-type: none"> - Check motor voltage, if no voltage, check the electronics as below, else check motor TCO and motor. - Check communication wire between Power module and control unit for failure or bad connection. - Change the control unit. - Change the Power module. |
| Not possible to change power level | <u>Cleaner without remote:</u> Investigate if the plastic knob reaches the potentiometer on the PCB. -Resetting the main/power PCB -Change power regulation wheel -Replace the control unit (PCB). |
| | <u>Cleaner with radio remote:</u> <ul style="list-style-type: none"> - Investigate if the LED on the remote indicates transmission. If not, change battery and try again. - If still no LED indication on remote, change remote control and reprogram the cleaner according to above instruction. - If LED indicates transmission, try replacing the remote according to above instruction. If cleaner starts, replace the RF remote control. - If still no function, replace the control unit in the cleaner. Be aware of the position of the radio antenna. If replacing the control unit this has to learn the RF-remote address according to above description. |
| No failure found | |
| If no any fault found after investigate the appliance, then use following coding | Product: 901 <ul style="list-style-type: none"> - Please use correct defect code to describe problem details, such as 53 (Customer misuse), 54 (Instructions missing or unclear), 55 (Not meeting expectations), 57 (No fault found) |