

Description of Goods

Shiva nozzle
EMEA

Action

Axis rework

Tools

Flat screw driver

Components

- New axis
- Small wheel

Prepared by
Attila Frank

Date
10/01/2019

Failure description:

- Nozzle base wearing out due to the rotation of the axis.

Tools for rework:

Flat head screw driver:



New version axis:



Description of Goods

Shiva nozzle

Action

Axis rework

Tools

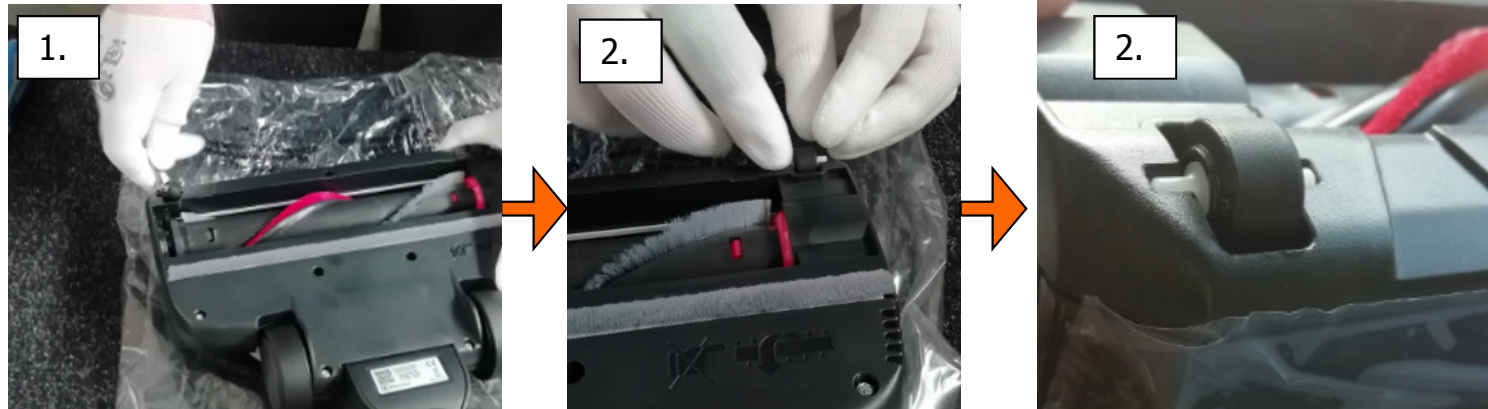
Flat screw driver

Components

-New axis
-Small wheel

Rework steps:

1. Remove the small wheel and axis from the base part with a screwdriver.
2. Put a new axis into the small wheel and click it into the nozzle base.. **Keep attention on the right position!**
3. Check the function of wheels (should be rotating freely). Also the check the nozzle distance from the floor. Make sure the nozzle base doesn't touch the floor.



Correct position of the axis

Prepared by
Attila Frank

Date
10/01/2019

Description of Goods

Shiva nozzle

Action

Axis rework

Tools

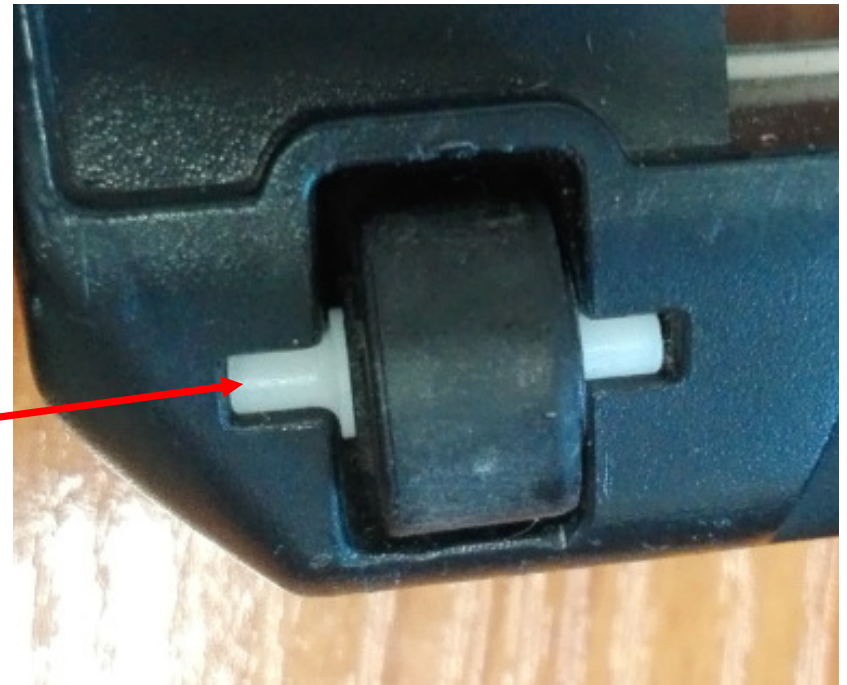
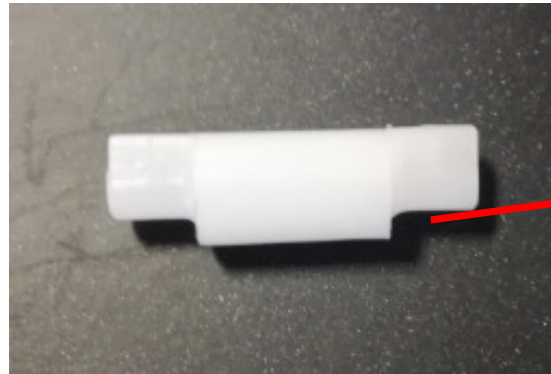
Flat screw driver

Components

-New axis

Correct position of the axis :

The rounded side of the axis should be up.



Prepared by
Attila Frank

Date
10/01/2019