



Electrolux

SERVICE MANUAL

Refrigeration

Document Revisions

Rev.	Date	Description	Author
00	12/2018	Document creation	Anna Grimlund
01	06/2019	Updated images and flow charts	Anna Grimlund

FOR INTERNAL AND PARTNERS USE ONLY

© ELECTROLUX HOME PRODUCTS
Consumer Service - EMEA
Quality & Continuous Improvement - Technical Support

BUILT-IN
WINE Cooler 45 CM

Wine Cooler

EN

Publication number
599 82 54-05
Edition: 06/2019 - Rev. 01

Contents

1	SAFETY	2
2	TROUBLESHOOTING	2
2.1	Error E1: Faulty temperature sensor	2
2.2	Error E2: Faulty refrigerant system component	3
2.3	Error E3: Open door alarm (door open for more than 30 minutes)	4
2.4	Light does not switch off	5
2.5	Door does not close	6
2.6	Humidity on the door	6
2.7	General flow chart	7
2.8	Images	8
3	SERVICE INSTRUCTIONS	11
3.1	How to replace the NTC probe	11
3.2	How to replace the fan	13
3.3	How to replace the fan	14
3.4	How to replace the PCB	16
3.5	How to replace the display	17
3.6	How to replace the lid	19
3.7	How to replace the door	20
3.8	How to replace the door hinge	21
3.9	How to replace the PTC starting device	22
3.10	How to remove the grid	23
3.11	How to replace the grid rails	23
3.12	How to replacfe the led bar	24

1 SAFETY

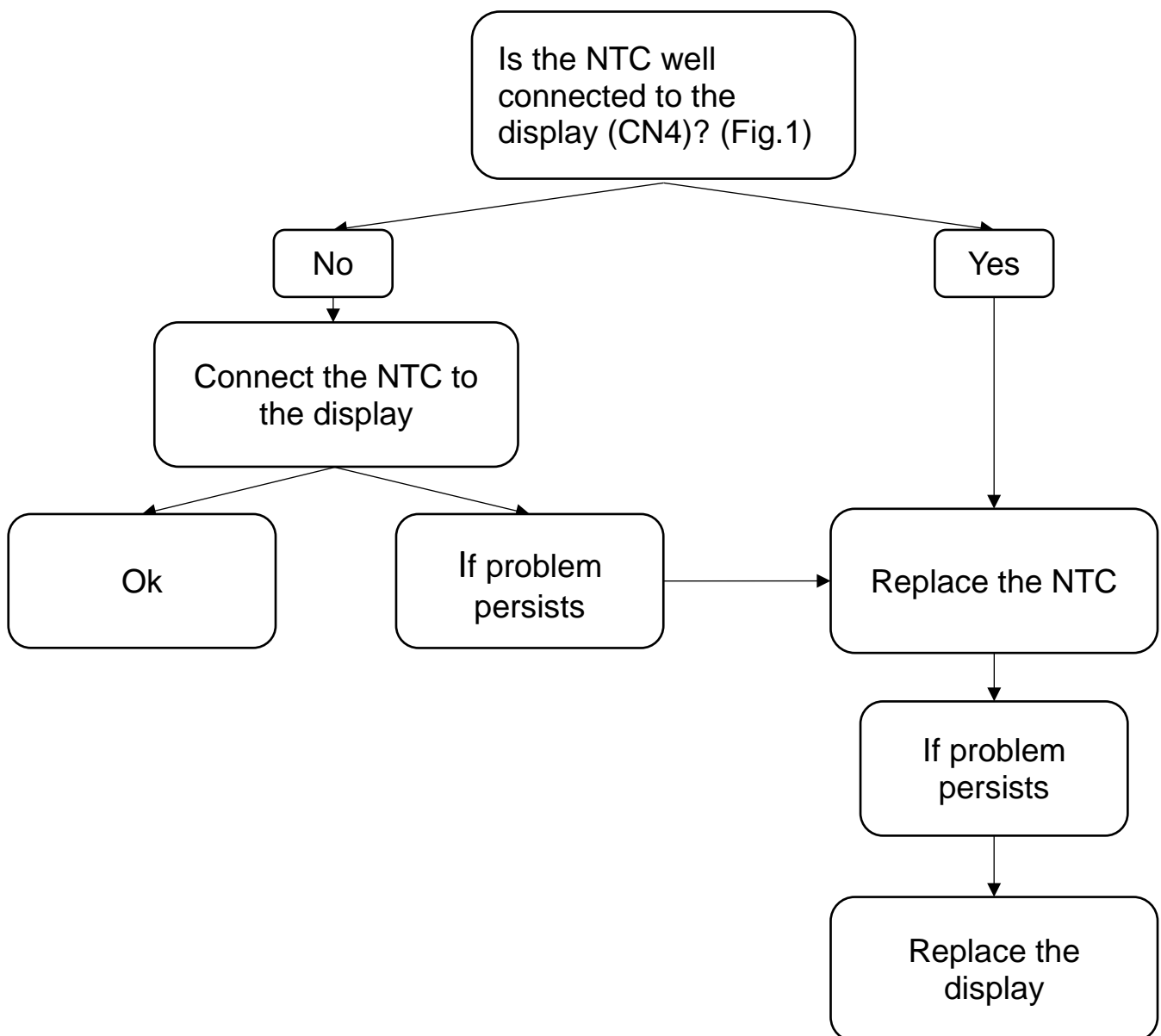
Please read all safety information before installing, operating, or repairing this appliance.



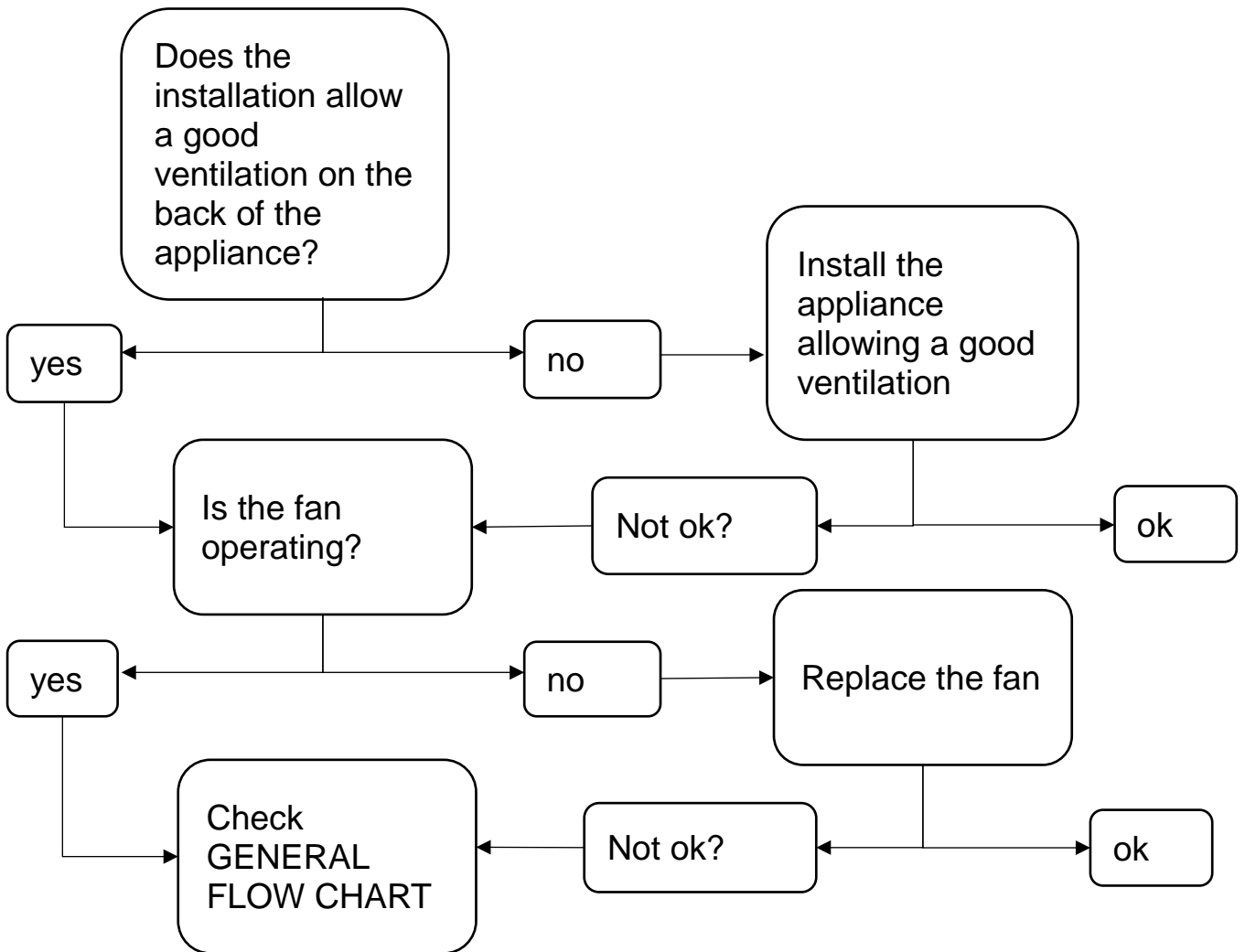
- All the work to be performed inside the appliance requires specific skills and knowledge and may only be carried out by qualified and authorised Service Engineers
- Before you access internal components, take the plug out of the socket to disconnect the power supply.
- Some of the components in the mechanical part could cause injuries, so wear suitable protection and proceed with caution.

2 TROUBLESHOOTING

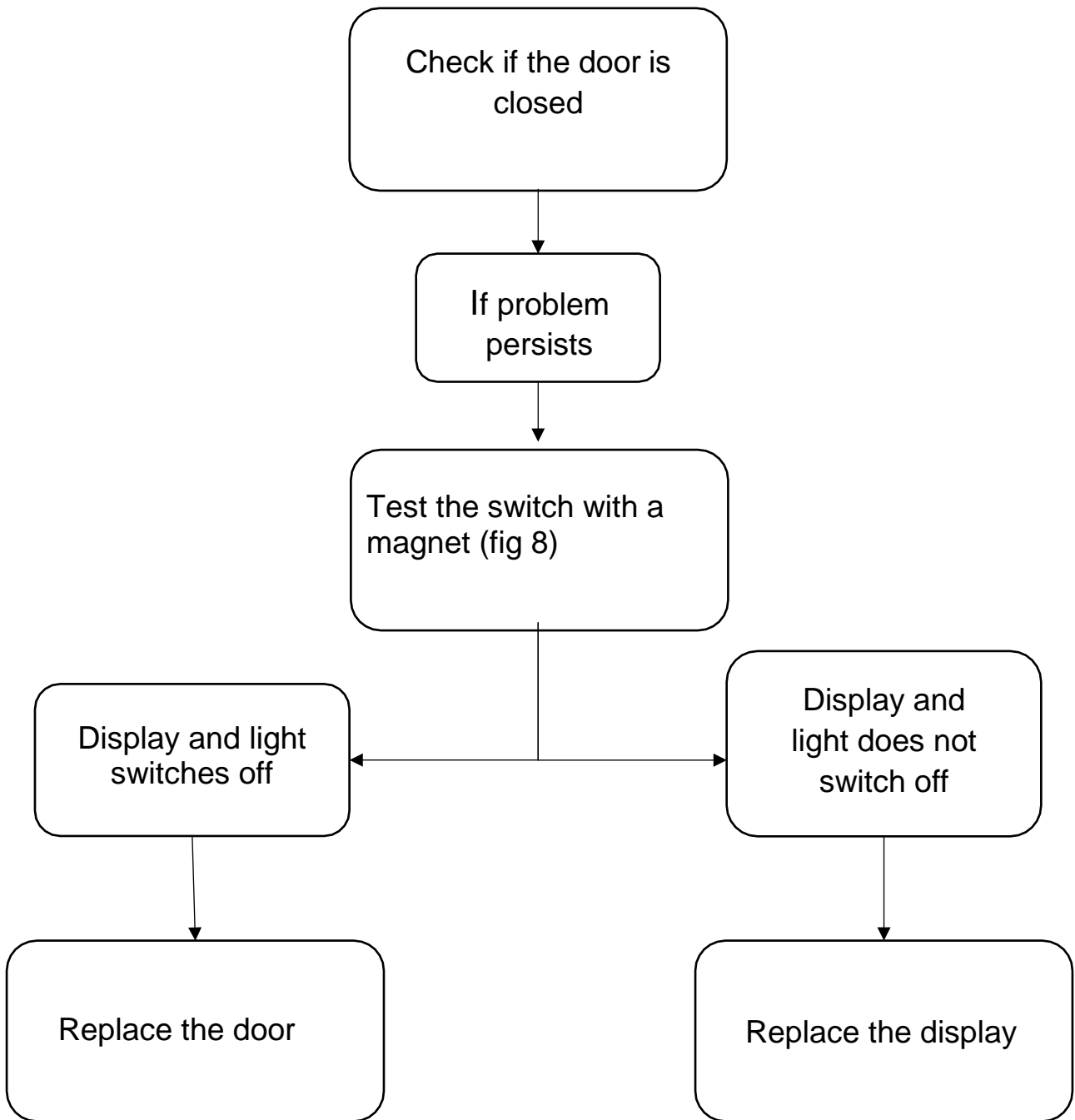
2.1 Error E1: Faulty temperature sensor



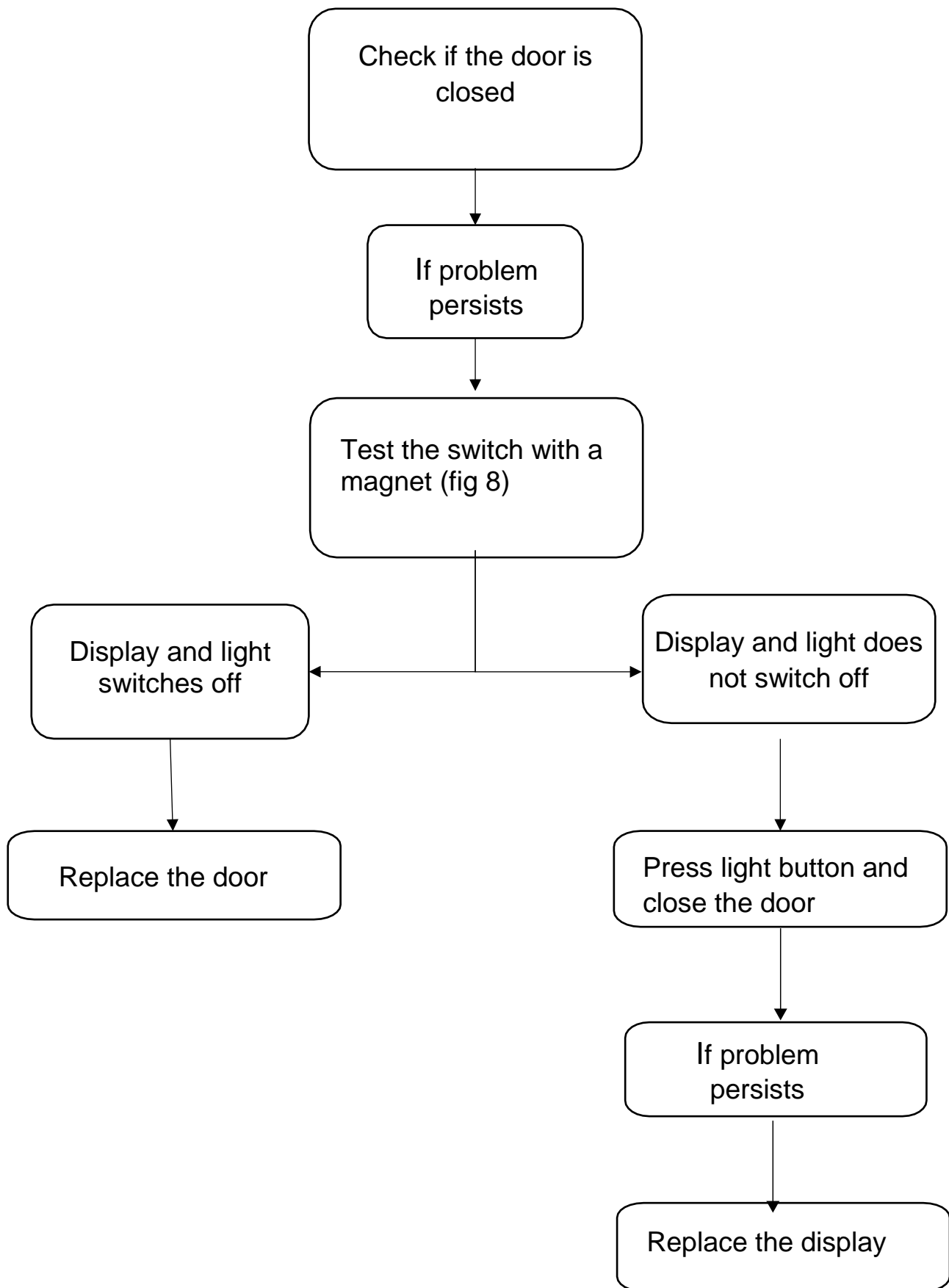
2.2 Error E2: Faulty refrigerant system component



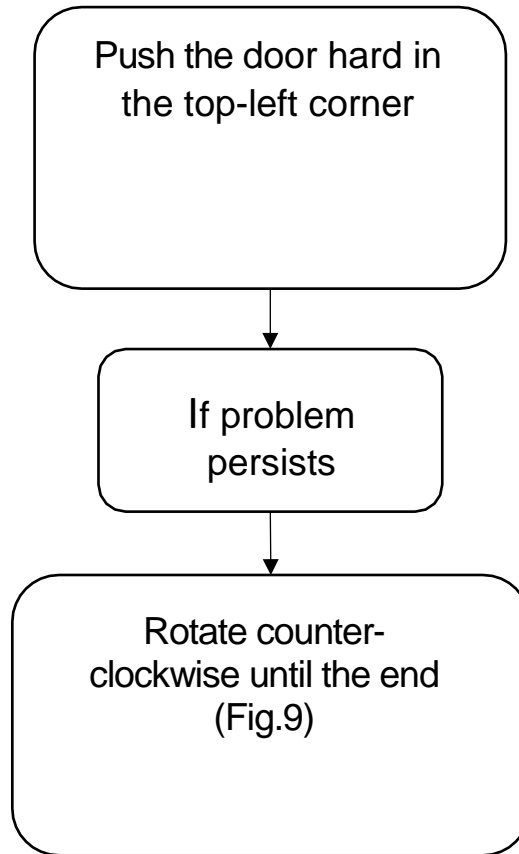
2.3 Error E3: Open door alarm (door open for more than 30 minutes)



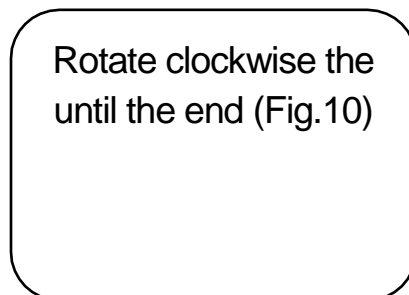
2.4 Light does not switch off



2.5 Door does not close

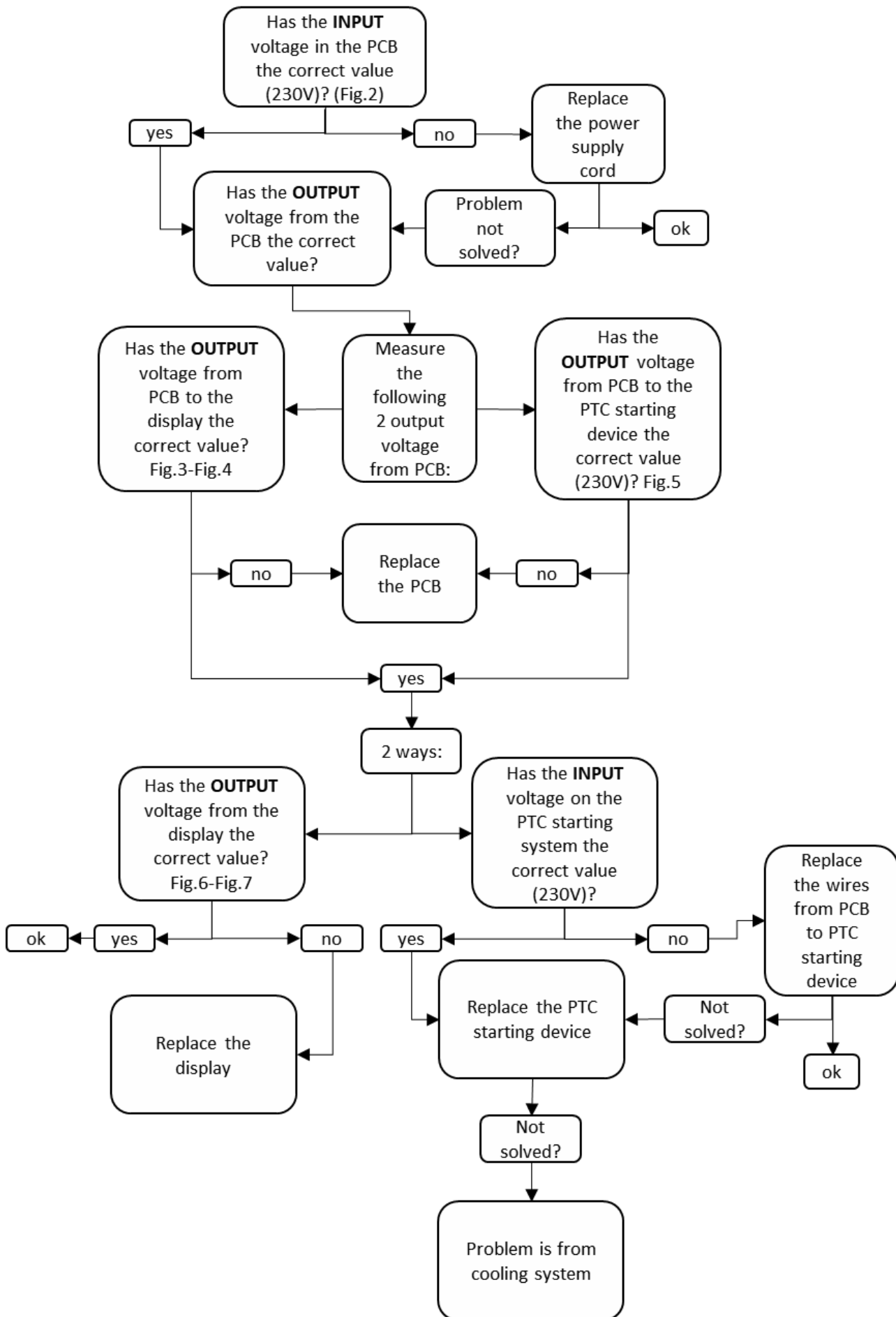


2.6 Humidity on the door



Note: Rotating clockwise means that the door is harder to close.

2.7 General flow chart



2.8 Images



Fig. 1

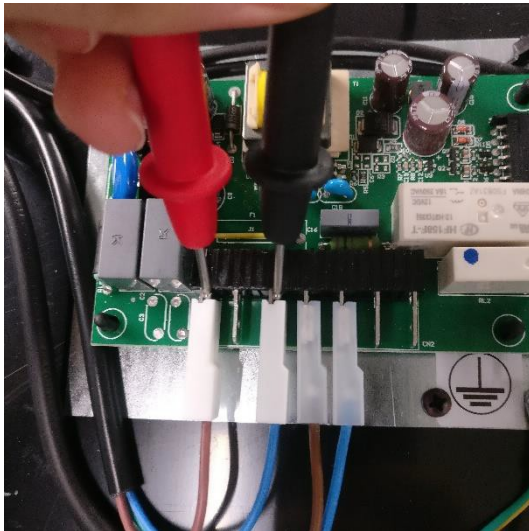


Fig. 3

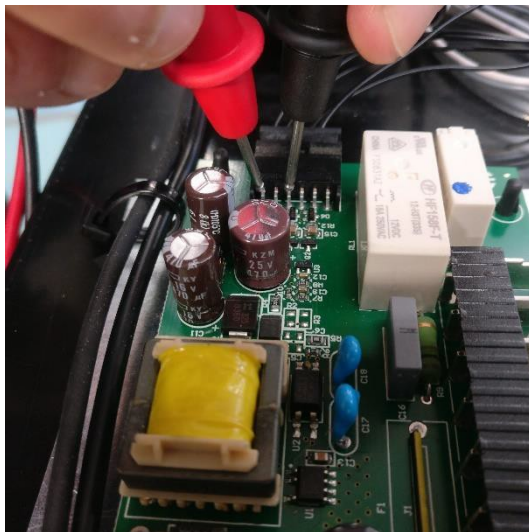


Fig. 2 (Voltage tested in DC between first and third pin from the left: around 5V)



Fig. 4 (Voltage tested in DC between second and third pin from the left: around

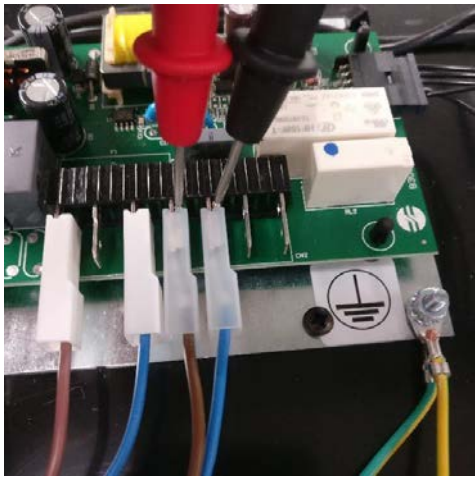


Fig. 5

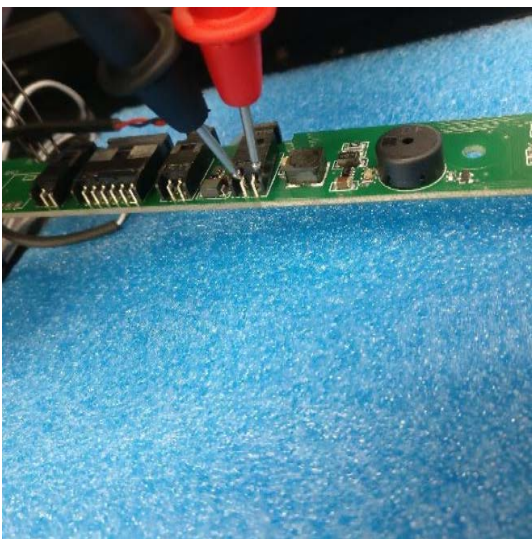


Fig. 6 (Voltage should be around 7.5V)

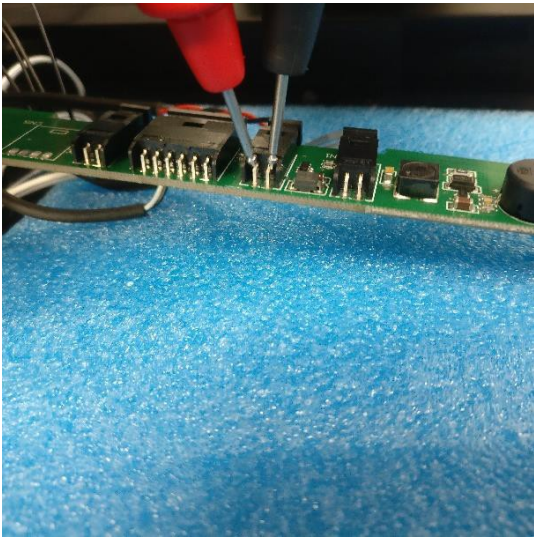


Fig. 7 (Voltage should be around 12V)



Fig. 8

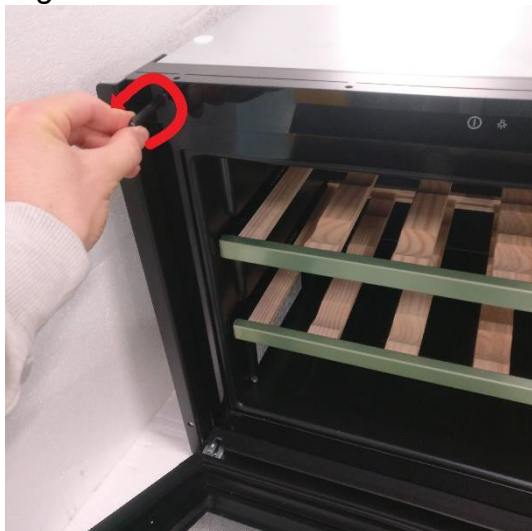
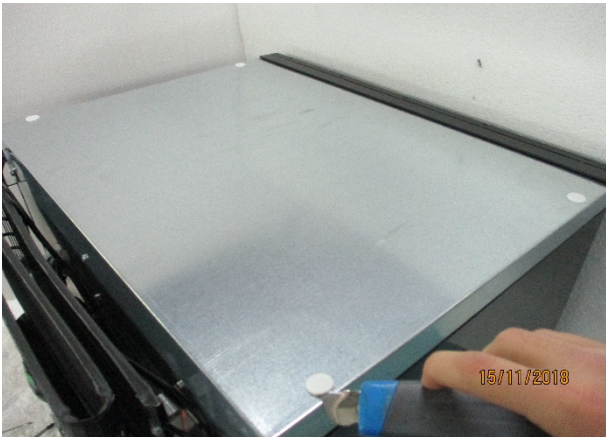


Fig. 10

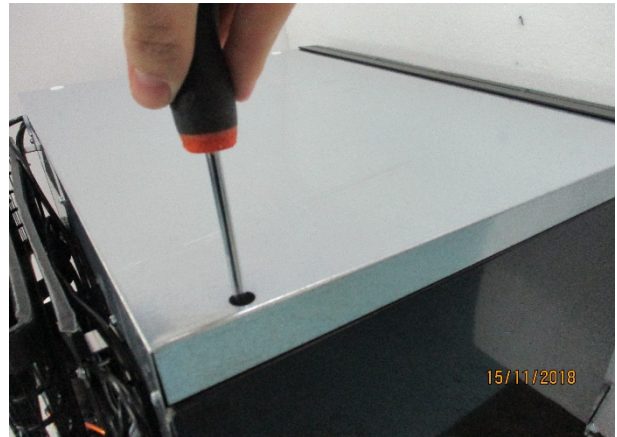
Fig 9

3 SERVICE INSTRUCTIONS

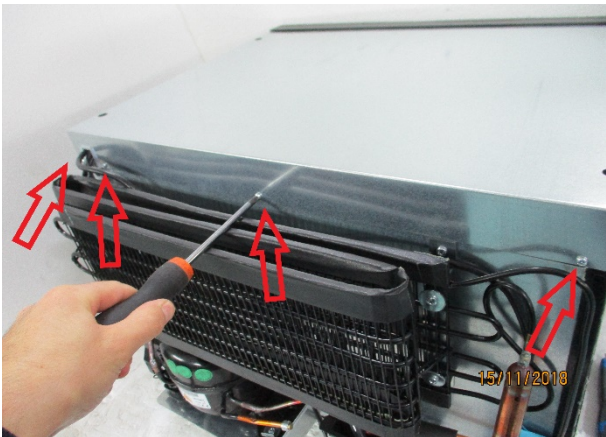
3.1 How to replace the NTC probe



1) Remove the 4 caps on the lid



2) Unscrew the 4 screws under the caps



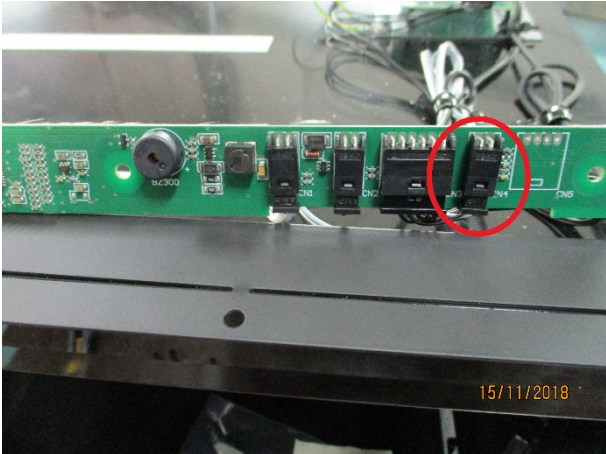
3) Unscrew the 4 screws that fix the lid and remove the lid



4) Remove the polystyrene protection



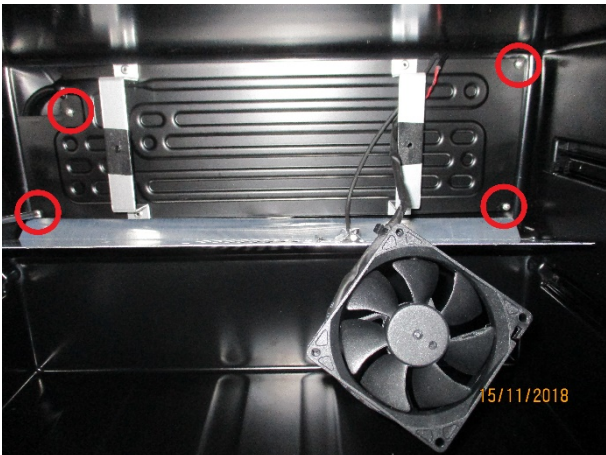
5) Use a clamp to unscrew the display from the 3 interlockings



6) Disconnect the NTC from the display (CN4)



7) Open the door, remove the grids and unscrew the 2 rivets that fix the evaporator protection



8) Unscrew the 4 screws that fix the evaporator



9) Move the evaporator and pull the NTC wire

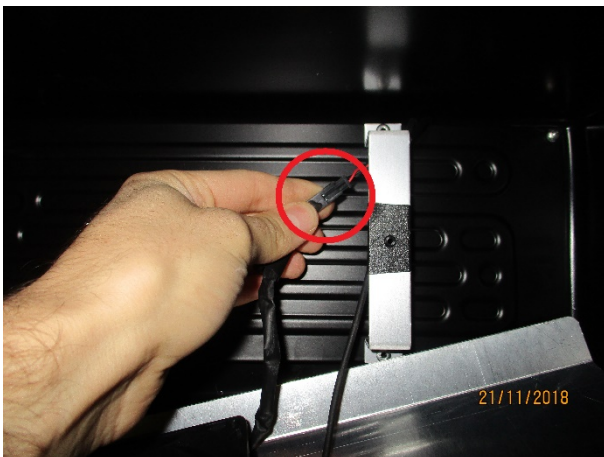


10) Detach the sticker that fix the NTC, and then reverse the procedure replacing the NTC with a new one

3.2 How to replace the fan



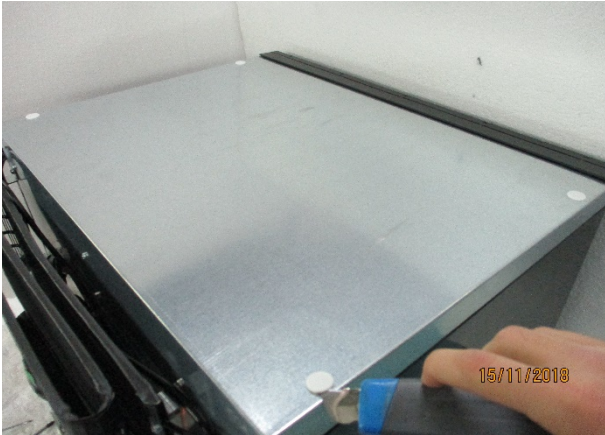
1) Open the door, remove the grid and unscrew the 6 rivets that fix the evaporator protection and the fan



2) Disconnect the fan connector, and replace the fan with a new one

3) If the problem persists, you must replace the wire that connect the fan and the display

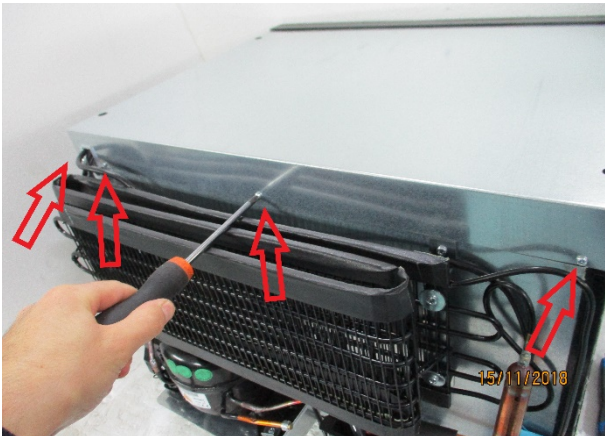
3.3 How to replace the fan



1) Remove the 4 caps on the lid



2) Unscrew the 4 screws under the caps



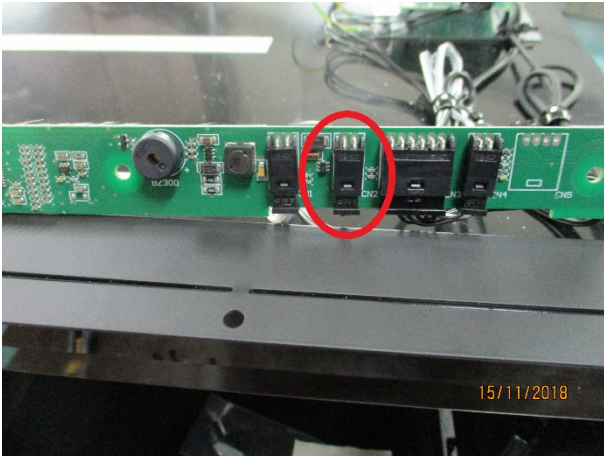
3) Unscrew the 4 screws that fix the lid and remove the lid



4) Remove the polystyrene protection



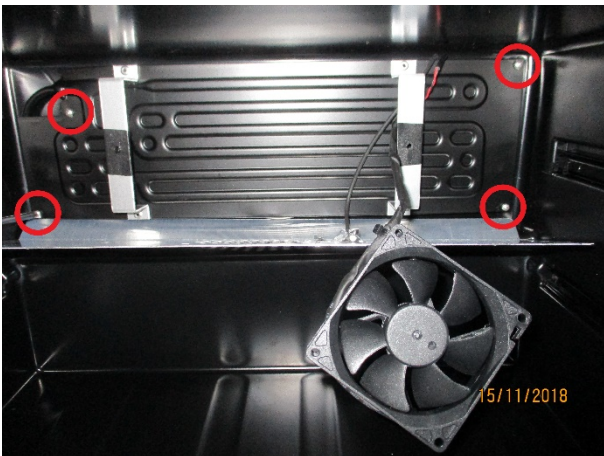
5) Use a clamp to remove the 3 interlockings that fix the display



6) Disconnect the fan from the display (CN2)



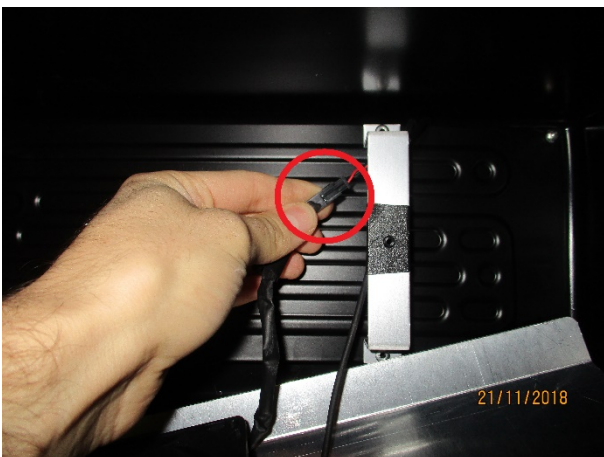
7) Open the door, remove the grid and unscrew the 6 rivets that fix the evaporator protection and the fan



8) Unscrew the 4 screws that fix the evaporator

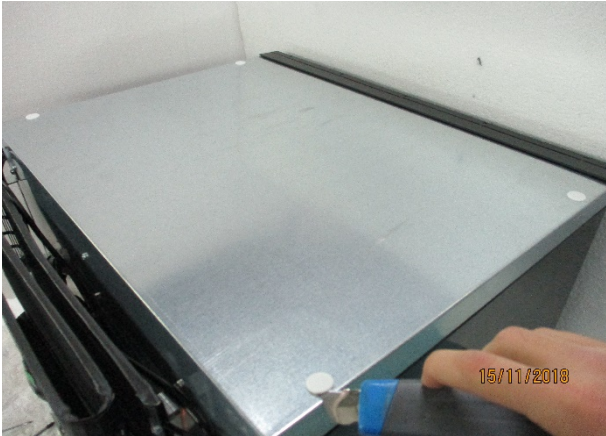


9) Move the evaporator and pull the fan connector

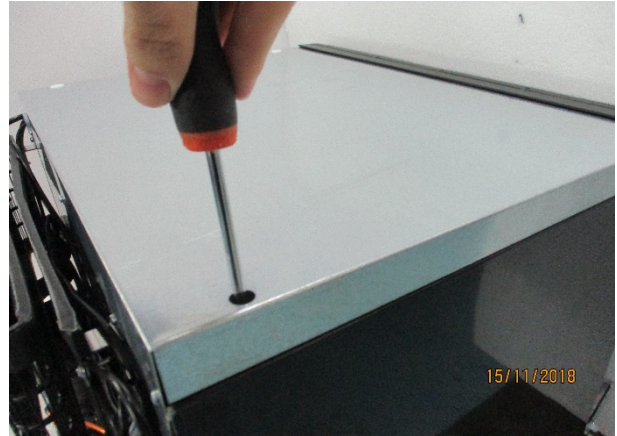


10) Disconnect the fan connector from the fan, and replace it with a new one. Then reverse the procedure to install the connector

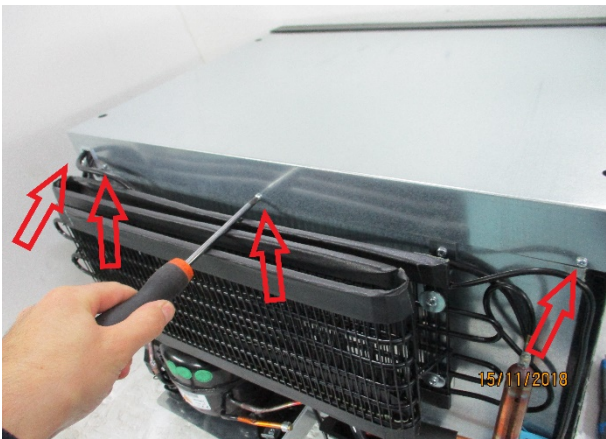
3.4 How to replace the PCB



1) Remove the 4 caps on the lid



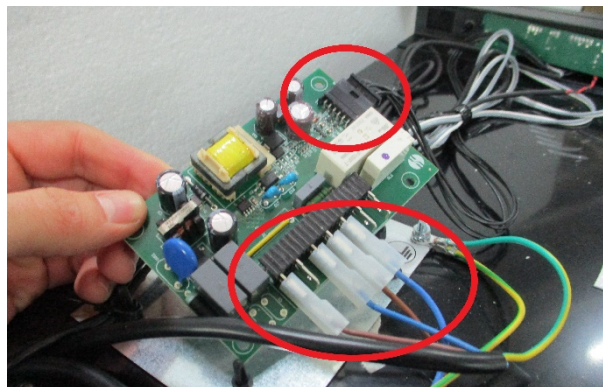
2) Unscrew the 4 screws under the caps



3) Unscrew the 4 screws that fix the lid and remove the lid

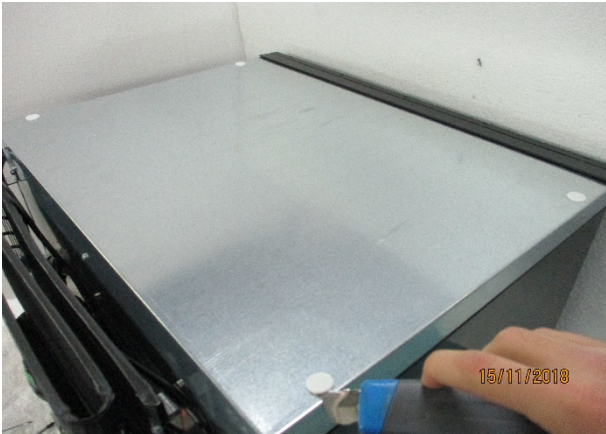


4) Use a clamp to uscrew the PCB from the 4 interlockings

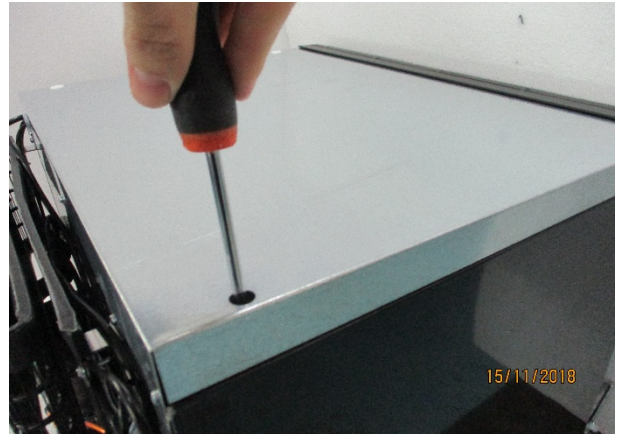


5) Disconnect the wires from the PCB and then reverse the procedure replacing it with a new one

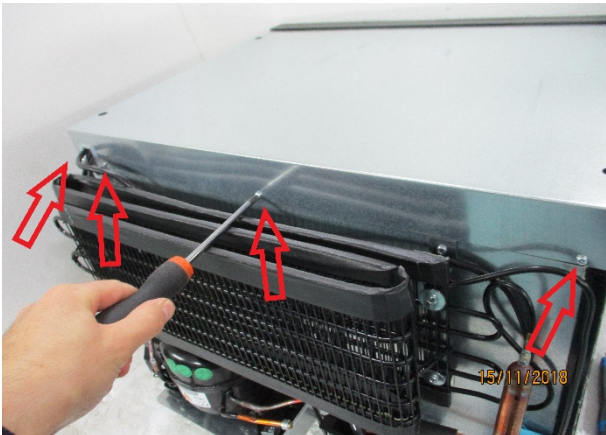
3.5 How to replace the display



1) Remove the 4 caps on the lid



2) Unscrew the 4 screws under the caps



3) Unscrew the 4 screws that fix the lid and remove the lid

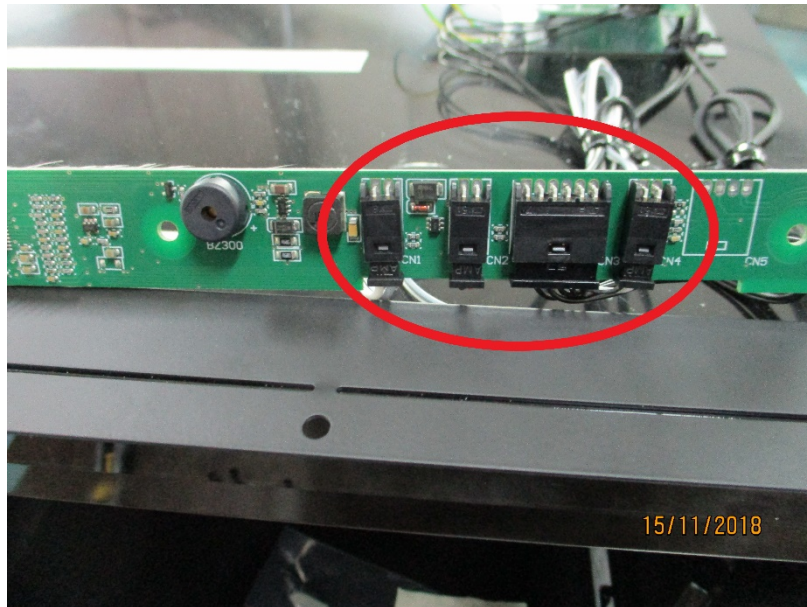


4) Remove the polystyrene protection



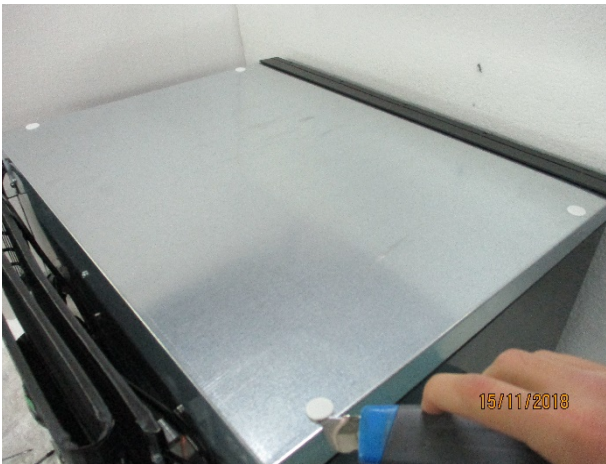
5) Use a clamp to remove the 3 interlockings that fix the display



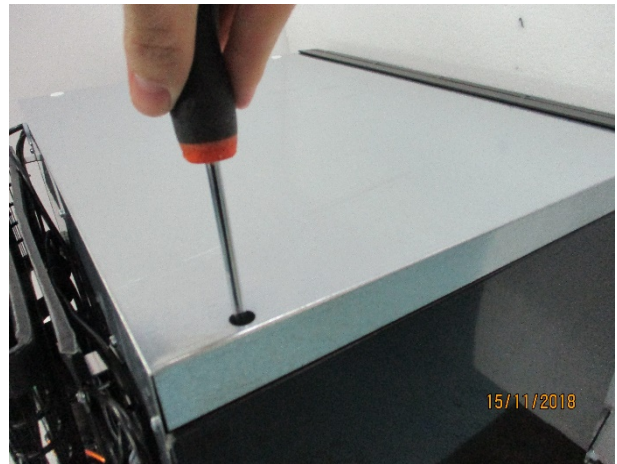


6) Disconnect the wires from the display, and then reverse the procedure replacing the display with a new one

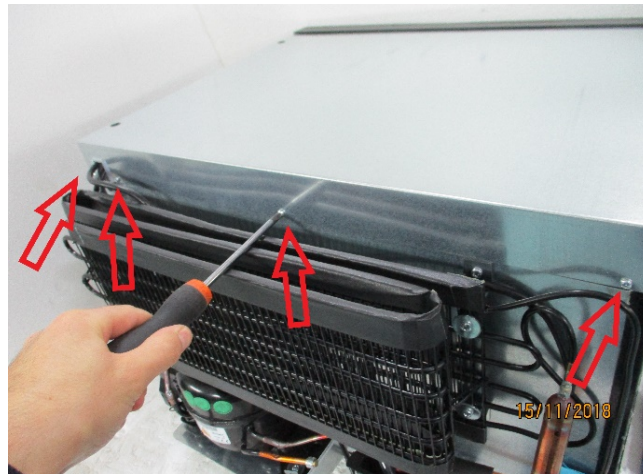
3.6 How to replace the lid



1) Remove the 4 caps on the lid



2) Unscrew the 4 screws under the caps



3) Unscrew the 4 screws that fix the lid and remove the lid

3.7 How to replace the door



1) Push down the door interlocking on both sides



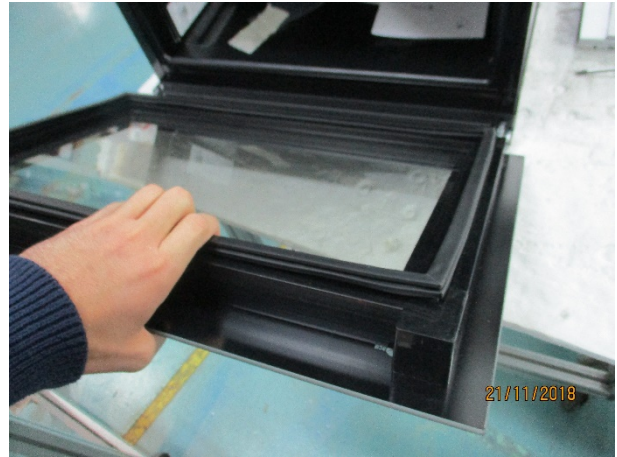
2) Pull out the door and replace it with a new one

Warning: After you have installed the new door, close the 2 interlockings to avoid the fallen of the door.

3.8 How to replace the door hinge



1) Push down the door interlocking on both sides



2) Pull out the door



3) Unscrew the 2 screws that fix the door hinge

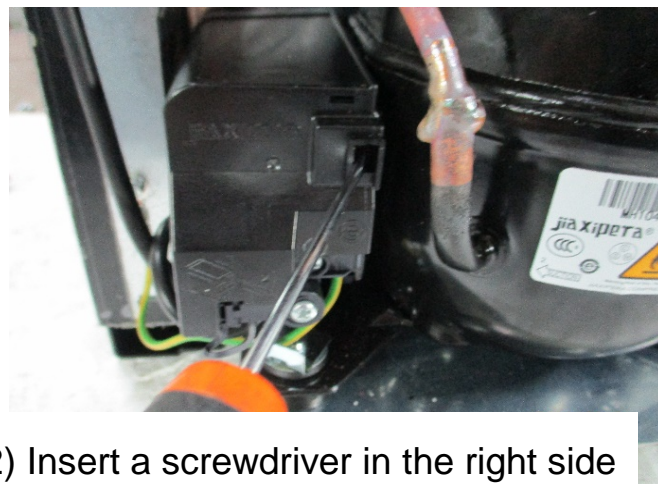


4) Pull out the hinge and replace it with a new one

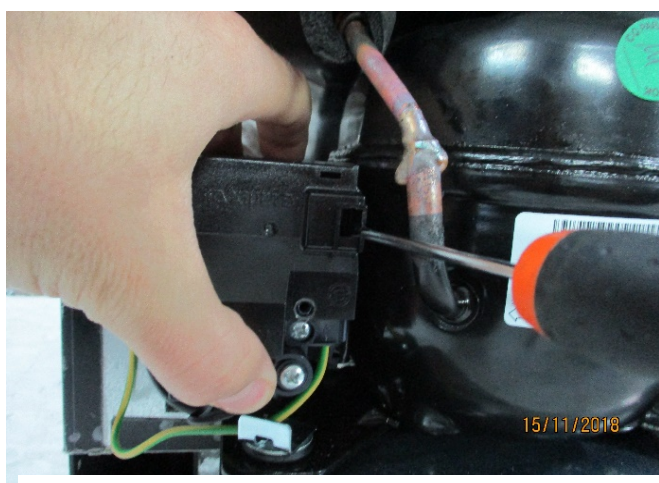
3.9 How to replace the PTC starting device



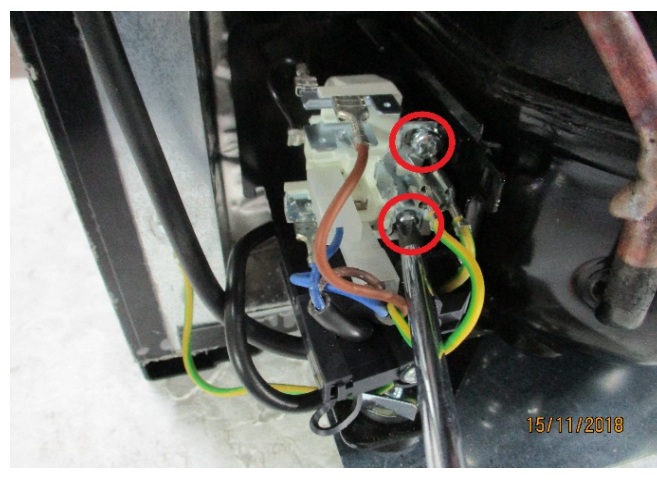
1) Unscrew the screw that fix the plastic element



2) Insert a screwdriver in the right side of the hole



3) Use the screwdriver as a leverage and pull the plastic element to remove it



4) Unscrew the 2 screws that fix the PTC starting device



5) Insert a screwdriver and use it as a leverage to remove the PTC starting device

6) Disconnect the wires from the PTC starting device, and reverse the procedure replacing the device with a new one

3.10 How to remove the grid



1) Pull up the grid to remove it

3.11 How to replace the grid rails

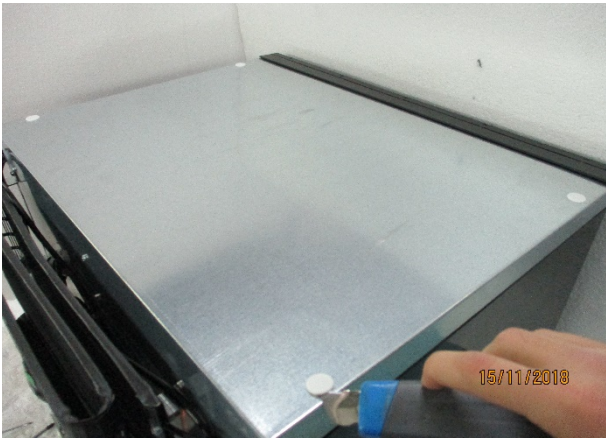


1) Pull up the grid to remove it

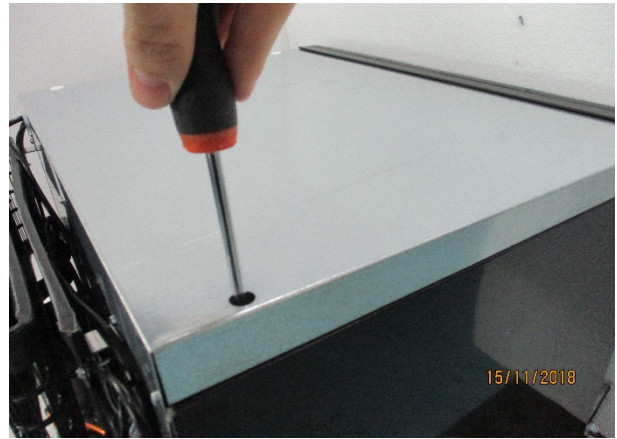


2) Unscrew the 2 screws that fix the rail and replace the rail with a new one. (The rail must be moved to unscrew the second screw)

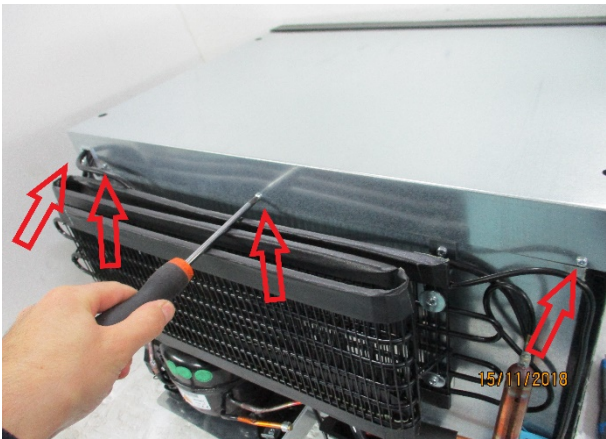
3.12 How to replacfe the led bar



1) Remove the 4 caps on the lid



2) Unscrew the 4 screws under the caps



3) Unscrew the 4 screws that fix the lid and remove the lid

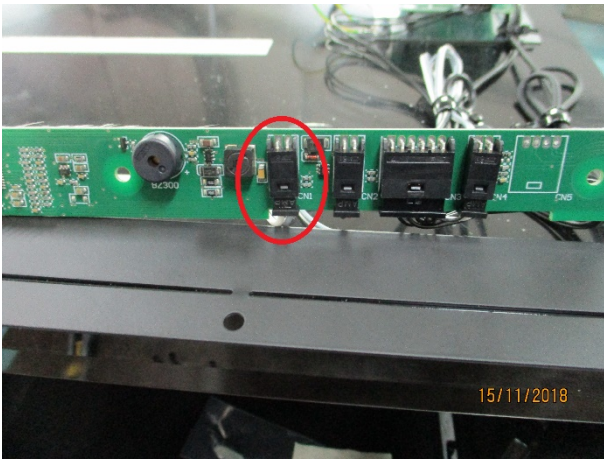


4) Remove the polystyrene protection



5) Use a clamp to remove the 3 interlockings that fix the display





6) Disconnect the display connector from the display (CN1)



7) Use a screwdriver as a leverage to remove the cap (from both sides)



8) Unscrew the 2 screws that fix the led bar (one screw for side)



9) Use a screwdriver as a leverage to remove the led bar



10) Pull the display connector, and reverse the procedure replacing the led bar with a new one