



Electrolux

SERVICE MANUAL COOKING

FOR INTERNAL AND PARTNERS USE ONLY

© ELECTROLUX HOME PRODUCTS
Consumer Service - EMEA
Quality & Continuous Improvement - Technical Support

Induction HoB Parrot User Interface



EN

Publication number
599 823 - 524
Edition: 09/2018 - Rev. 00

CONTENTS

CONTENTS	1
1 PURPOSE OF THIS SERVICE MANUAL	2
2 SAFETY	3
3 PARROT USER INTERFACE	4
4 PARROT UI SERVICE	7
5 ACCESSING THE SPARES	11

1 PURPOSE OF THIS SERVICE MANUAL

The purpose of this Service Manual (SM) is to provide Service Engineers who are already familiar with the repair procedures of Induction Hob's

This SM will provide information on:

- Induction Hob with Parrot UI
- Accessesbility
- Technical and functional characteristics
- Trouble shooter

Document Revisions

Rev.		Date	Description	Author
00		09/2018	Document creation	BSP

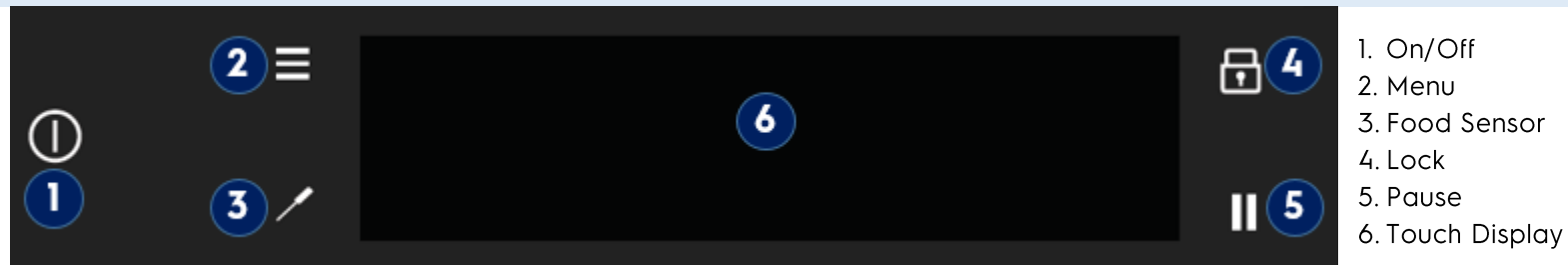
2 SAFETY



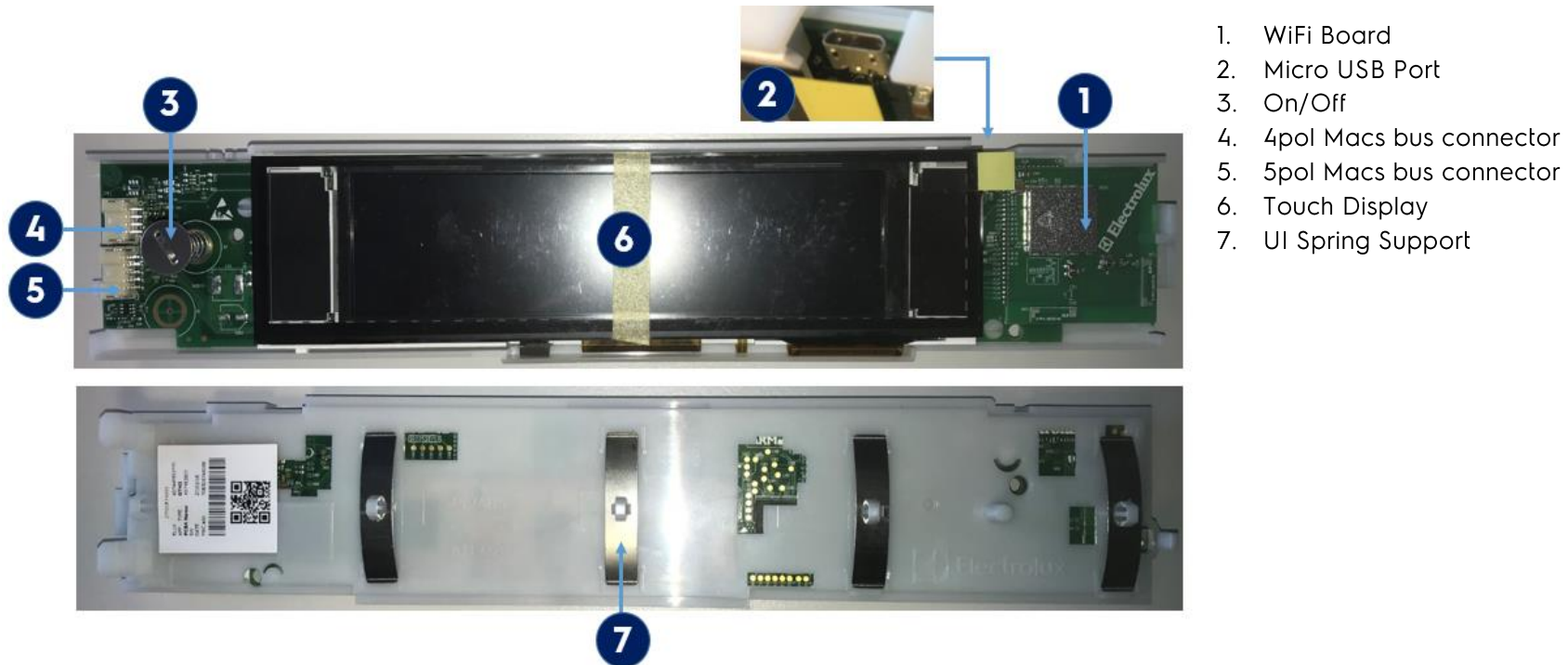
- All the work to be performed inside the appliance requires specific skills and knowledge and may only be carried out by qualified and authorised Service Engineers
- Before you access internal components, take the plug out of the socket to disconnect the power supply.
- Some of the components in the mechanical part could cause injuries, so wear suitable protection and proceed with caution.

3 PARROT USER INTERFACE

3.1 Graphis on Glass

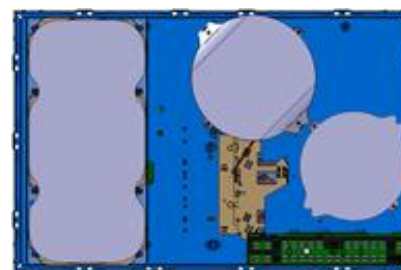
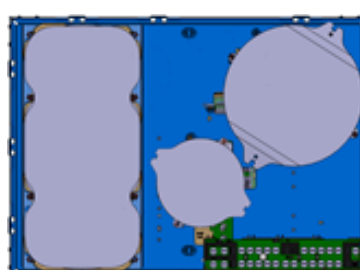
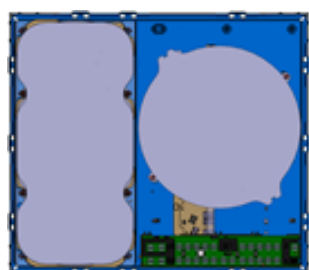
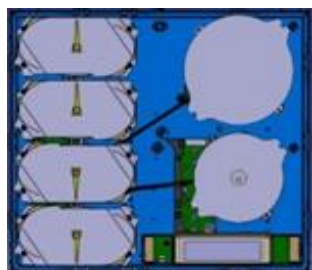
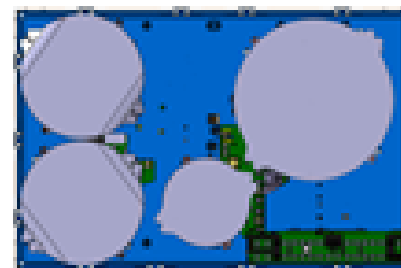


3.2 User Interface Structure



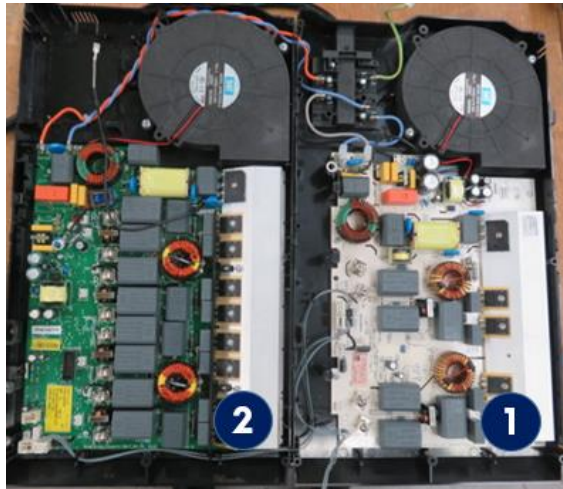
! Spares available only as configured version , SideKick of SW not posible for current spares

3.3 Hob Variants

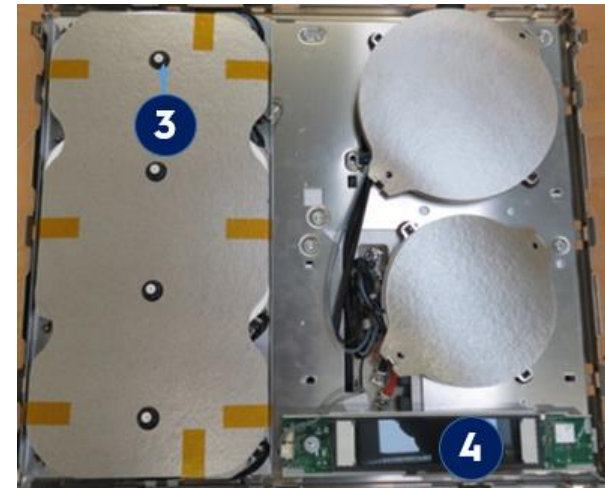


3.4 Hob setup - Power Board

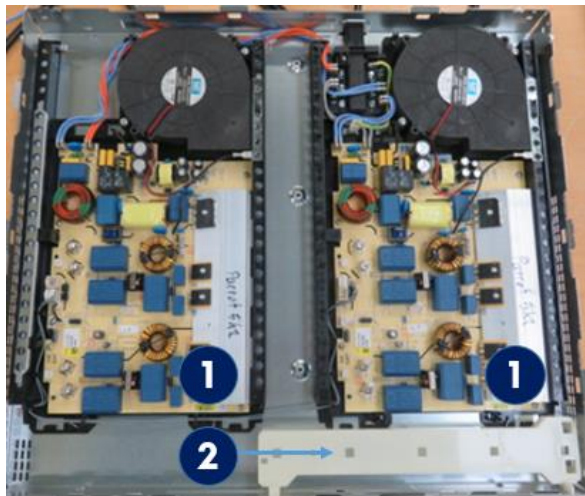
3.4.1 POB - King Cheetah / King Leopard



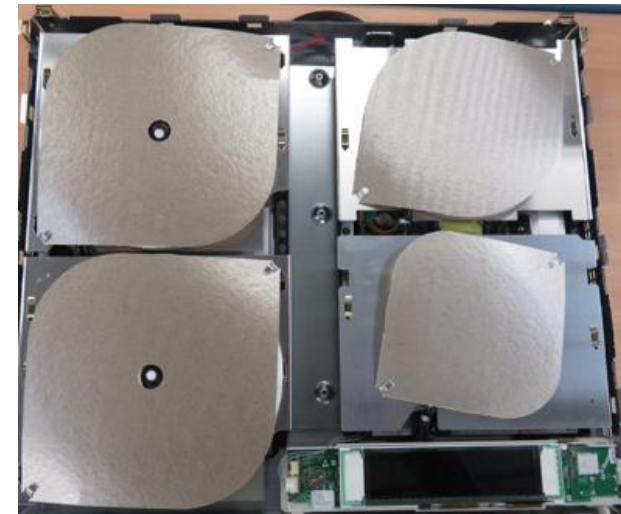
1. King Cheetah
2. King Leopard
3. Profry sensor
4. Parrot User Interface



3.4.2 POB - King Tiger



1. King Tiger
2. Parrot UI support Carrier



! Jumper should be always on King Cheetah / Tiger board (Right side POB)

4 PARROT UI SERVICE

4.1 Error Codes

Error Display	Error Area	Error Possible Root Cause	Error Troubleshooting
E 031	Configuration error	Programming mismatch	Re-program, replace
E091	Tunnel Alarm	User Interface	Exchange the UI
E0C1	Back Light Alarm		
E121	NETVM Communication Alarm	WiFi not working	Reset/Reprogram UI
E181	NIUX Communication Alarm		Exchange UI
E2xx	Food Sensor	Food Sensor	Check the defect in Food sensor
E253	HF- Circuit / Chip	Food Sensor	Exchange Food Sensor
E263	EE program not answering		
E 3xx	High voltage	Wrong mains connection, Neutral is disconnected	Check installation and voltage in installation
E 3xx	Low voltage	Wrong connection, supply voltage is too low	Check installation and voltage in installation

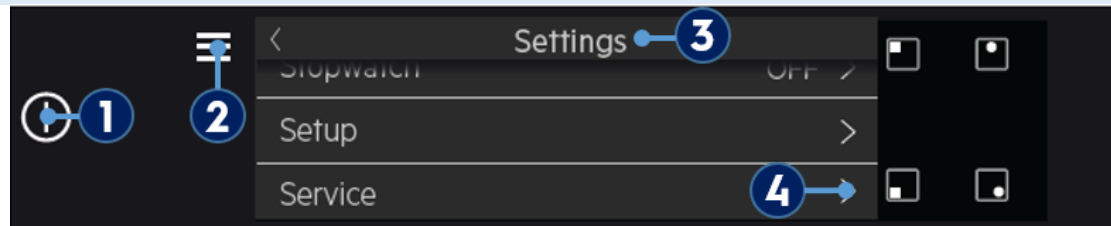
E 4xx	Temperature sensor	Not connected, broken, short cut , Over heated	Change coil or temperature sensor (Check the sub failure and zone position)
Error Display	Error Area	Error Possible Root Cause	Error Troubleshooting
E 5xx	-		
E 6xx	Power board	Power board defect	Replace power board
E 7xx	Fan	Fan blocked, defect or not connected	Change fan
E 8xx	Communication Error on Bus	No Voltage on Module with ID 2 or ID 3/4	Check connection of mains, Check internal bus wiring Replace power board
E893	Communication Alarm	Food Sensor reader board wiring	
E 9xx	Interface	Internal Error in the UI	Replace UI
E961	Touch Driver Alarm	Key Alarm	Check Glass assembly and built in situation
E971	Main Key Alarm		

! For general Errors / Trouble shooting refer to the SM 599729030

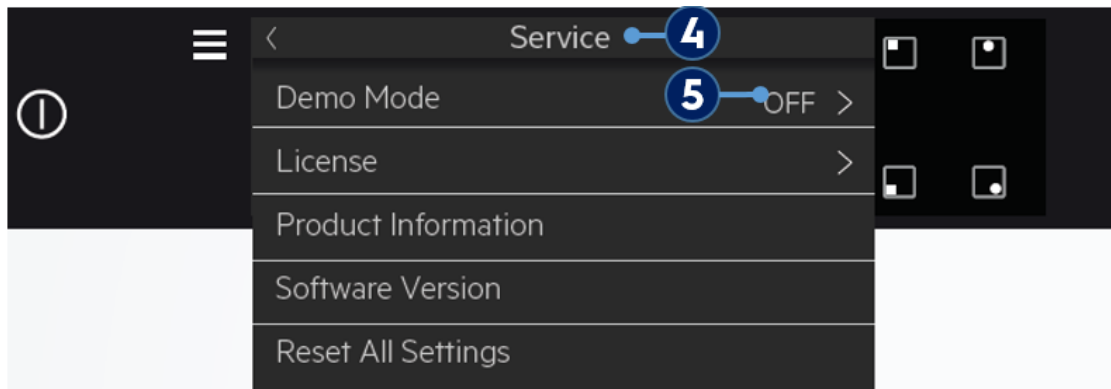
4.2 General Troubleshooting

Error Display	Error Area	Error Possible Root Cause	Error Troubleshooting
Display Dark or flickering	No indication	Device dead	Check connection
	No display, cancel charging	Power board broken	Swap board Jumper missing / wrong plugged
	No indication	Cable harness not connected	Check, replace
		Interface is broken	Swap interface
No performance	power display	Coil not connected or loose. Coils reversed connected	Check contact Connect correctly
error message	E xxx in the display	See error list	

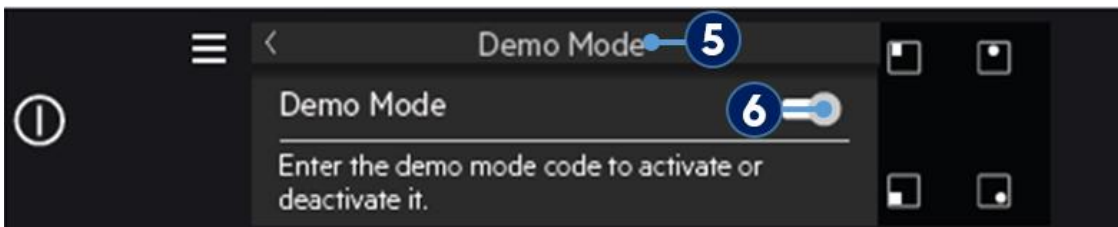
4.3 Service Menu



1. Press On/Off
2. Press Menu
3. Scroll and select settings
4. Scroll and select Service



5. Select Demo Mode



6. Touch the soft key to activate/deactivate

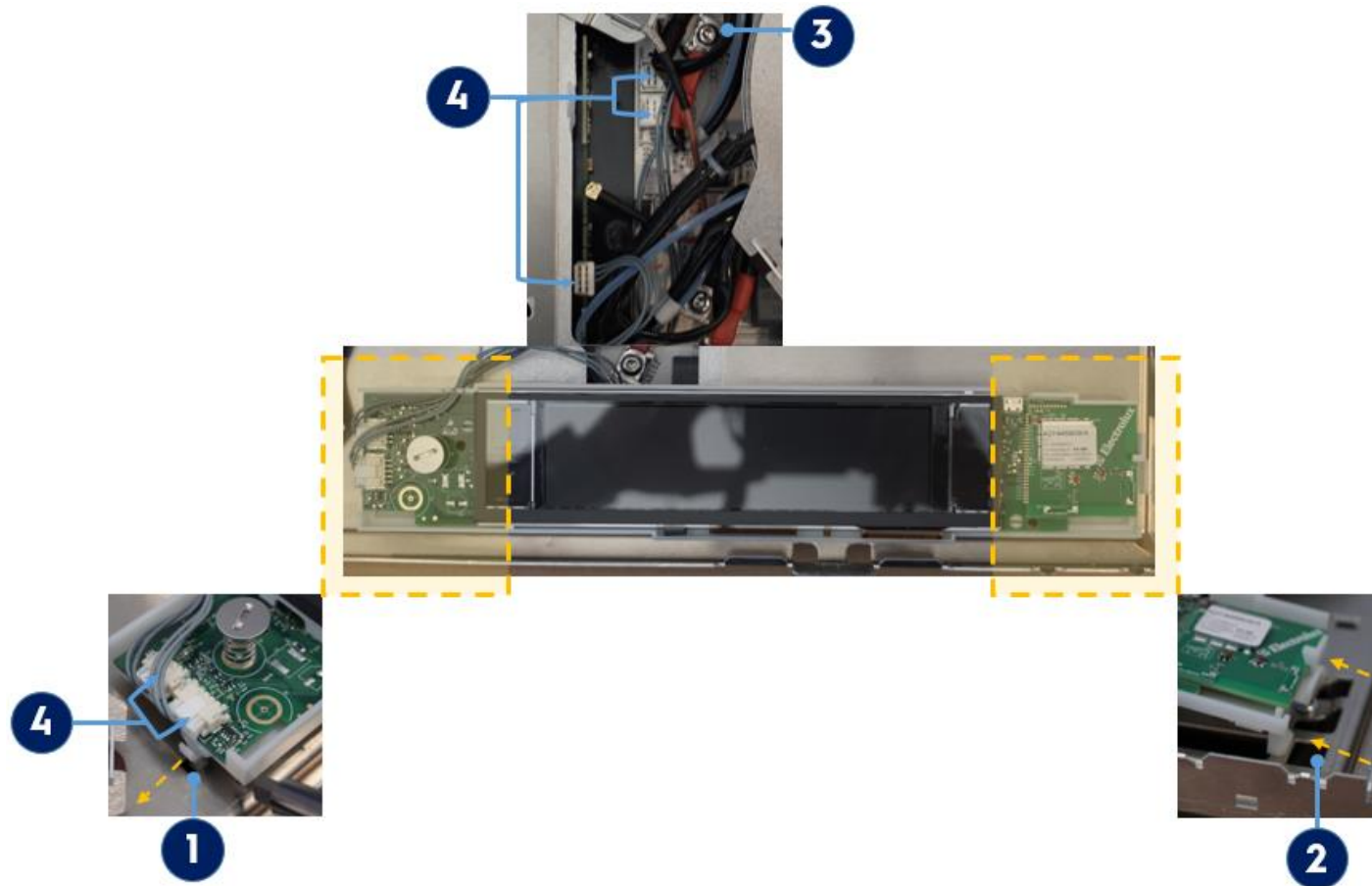


7. Select 1 - 9 - 0 - 2 - OK : Access Service Mode

! Turn off the appliance, service mode will be closed
7. Select 2 - 4 - 6 - 8 - Ok : Access Demo Mode
Pot detection will work with low power. Demo will be show on display when it's on. Follow the reverse steps to disable demo mode

5 ACCESSING THE SPARES

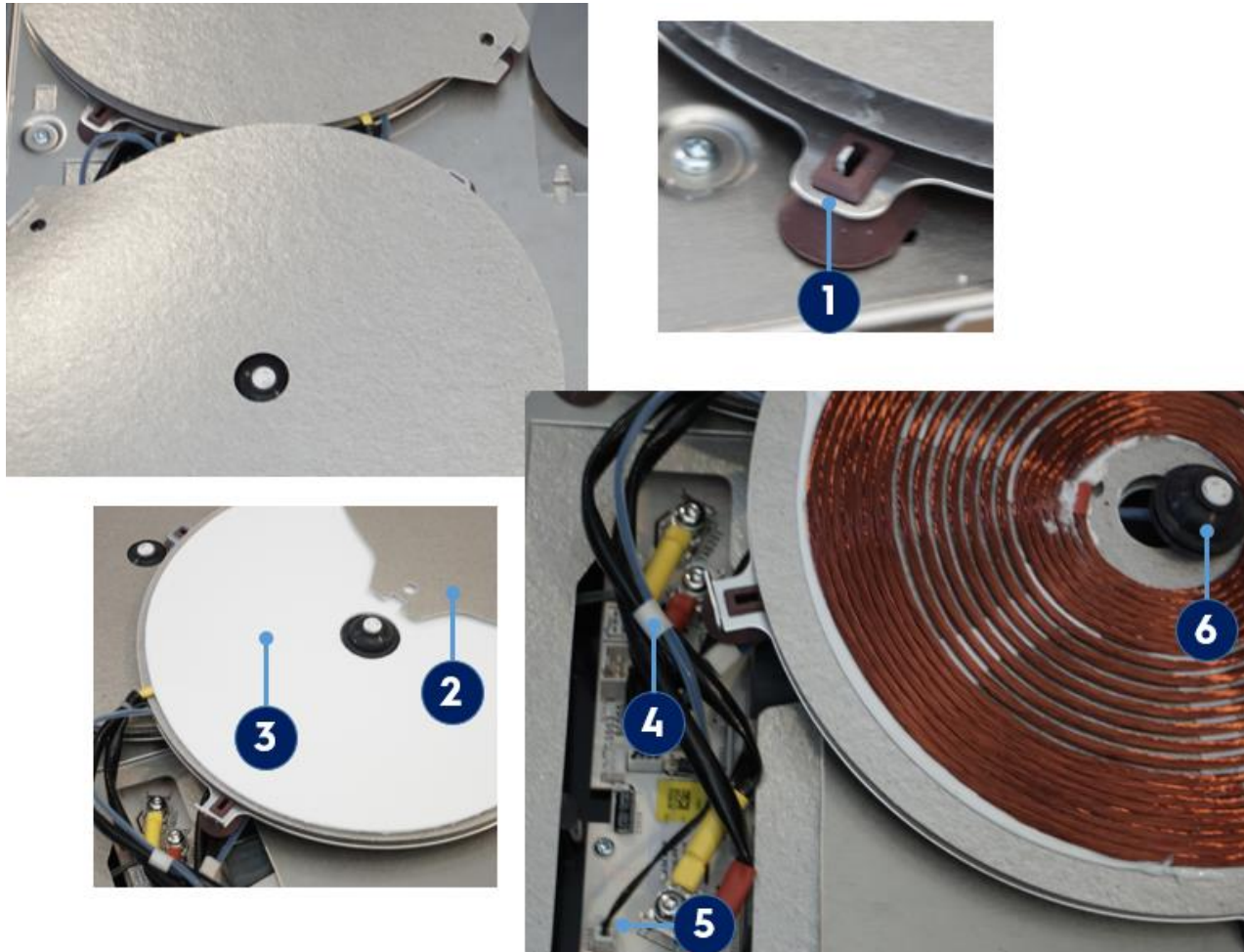
5.1 Parrot UI



After removing the glass:

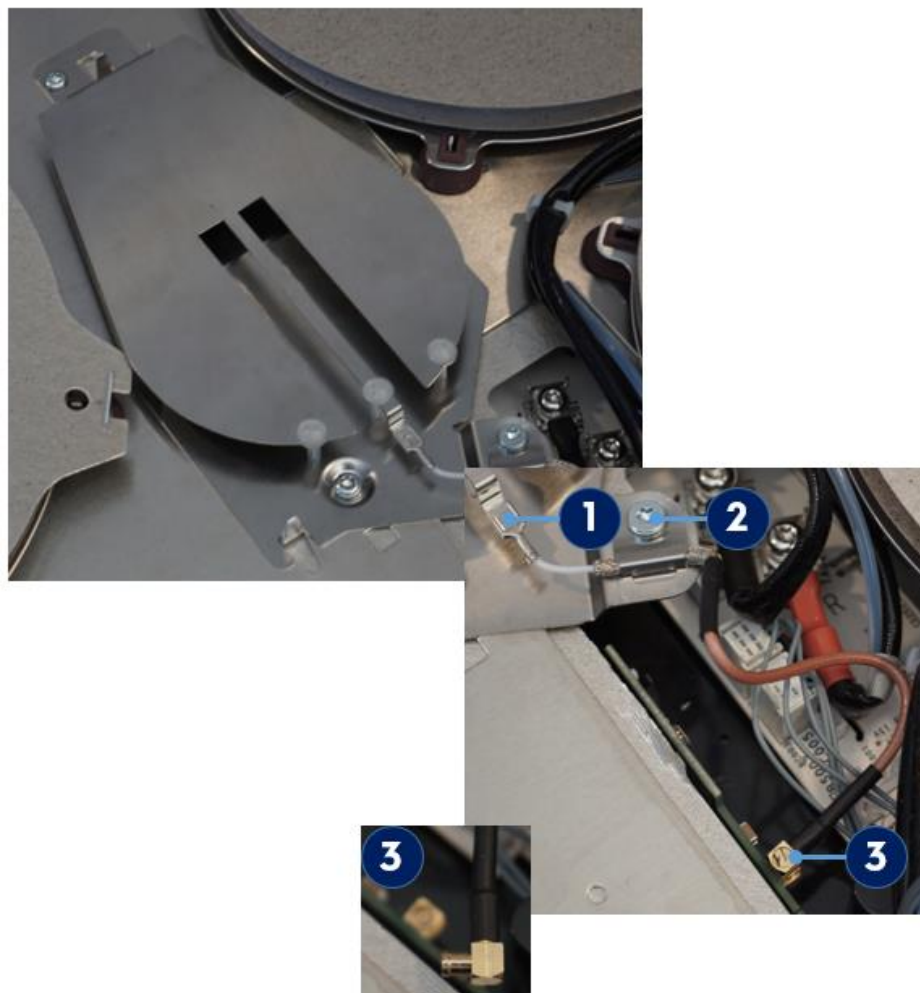
1. Unsnap the left snap under the user interface
2. Slide the User interface
3. Unfasten the Coil cable to get the clearance
4. Unsnap the Rast connectors
5. Assemble the new UI removing the top foil and follow the reverse steps

5.2 Fry Assist / Temperature sensor



1. Lift the coil from the coil supporter (place it back in the right position after the service)
 2. Remove the Mica sheet
 3. Remove the Glass wool (white sheet/Insulation layer)
 4. Cut the wire tag
 5. Pull out the connector
 6. Pull out the bellow
- Insert the new spare from the centre of the coil and fix the connections as per the above steps

5.3 Food Sensor



1. Unsnap the connector
2. Unfasten the screw
3. Pull the sensor connector from the board

! Depending on the spares definition (if it's full spares or only cable) the document will be updated