



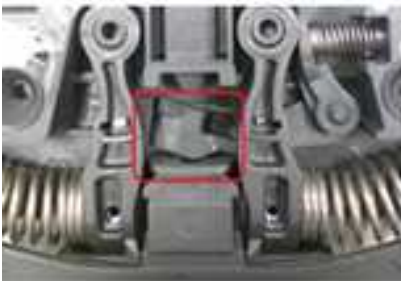
DOROTEA-DOMODOSSOLA: 2nd Gen. Auto door open

DESCRIPTION:

Cases have been detected in field where the users complaint that the cycle doesn't start or the door doesn't close.

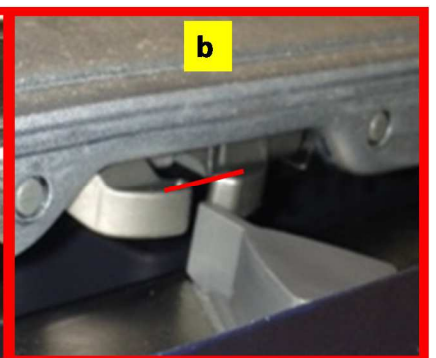
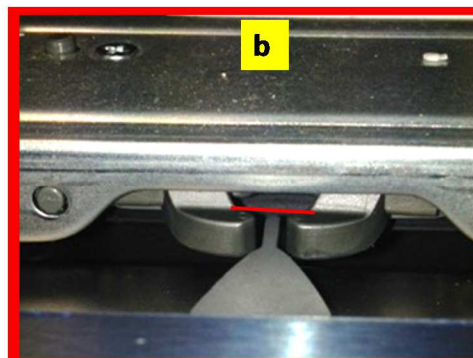
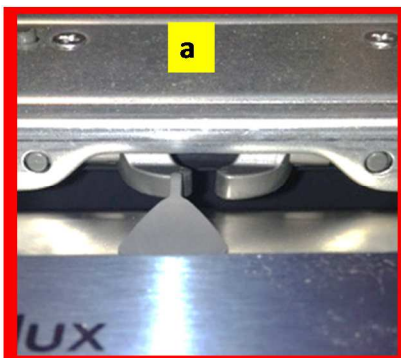
- 1) Cycle doesn't start (90% of the cases)
- 2) Door doesn't close (10% of cases)

The cause highlighted from the analysis of the faulty parts is the breakage of the micro activation lever of the ADO



The breakage of the lever occurs for a misalignment of the diamond fixed on the inner door, respect to the hooks of the door lock and it can be due to:

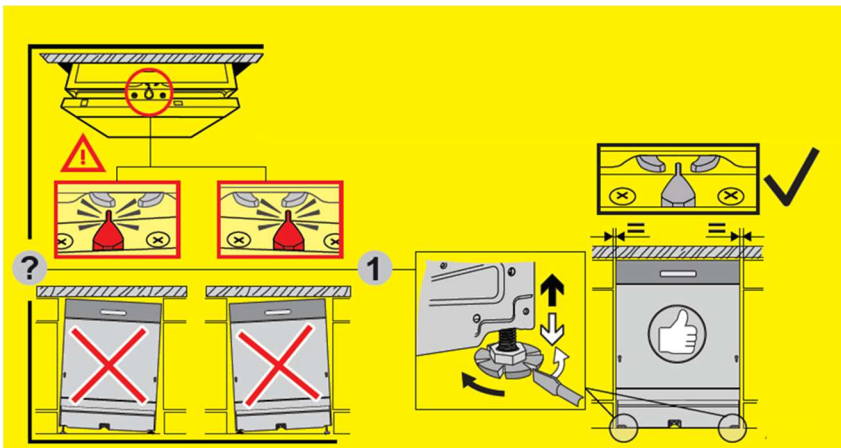
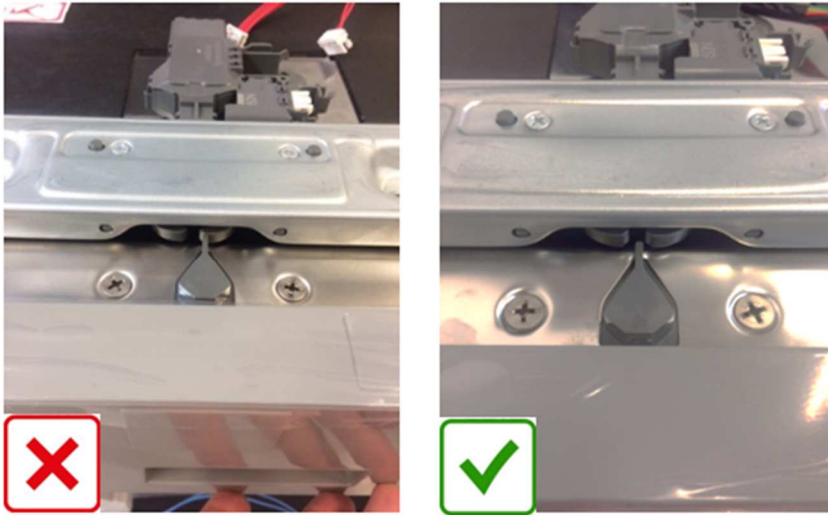
- a) Dishwasher not well levelled (picture a)
- b) Inner door and/or upper cross bar deformed and the diamond remains below the door lock hooks (picture b)



INSTRUCTION:

In case of intervention is important to check that the dishwasher is levelled correctly and that the structure or the inner door has not been deformed during the handling/transport

- a) The diamond must be centered between door lock catchers.



- b) The diamond should be at least levelled or higher than door lock catchers. If it remains below the hooks, the inner door or the upper cross bar has been deformed. A bending action on the cross bar is needed to bring the door lock in the correct position respect to the diamond (see picture below)



MODELS CONCERNED:

- 60cm and 45cm Models with 2nd generation Door lock with Auto door opener from Italy (Dorotea) and Poland (Domodossola)

REVISION:

Revision	Date	Description	Author	Approved by
00	7/2018	Document creation	Rui Almeida	Claudio Pigaiani