

# Shiva HUV disassembling process

*Thinking of you*  
**Electrolux**



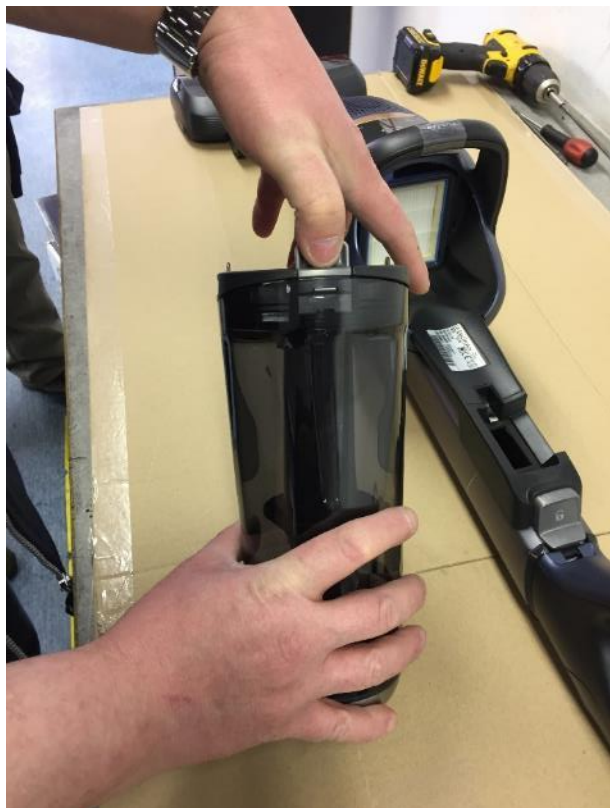
# Shiva HUV disassembling process

*Thinking of you*  
**Electrolux**



First step is to remove the dust container from the body.

1. Push the button at the top of the dust container
2. After this step we can dispart the dustcomp from the body.



Push the button backwards.



Open the dust container filter.



Dispart the filter holder.



Open it.



You can remove easily  
the filter from the frame.



Grab the filter mesh and take out this.



Push the button.



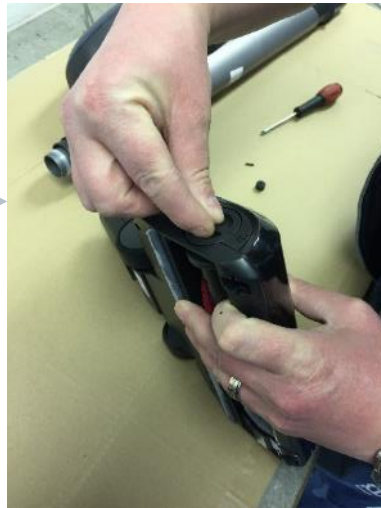
Pull down the nozzle from the body.



After disassembly.



Remove the front wheel with a screwdriver.



Turn away the button.



Remove the brushroll from the nozzle.





Remove the Hepa filter.





With the help of a screwdriver you can lift up the side cover. (from inside)



Pull sideways.



Remove this.



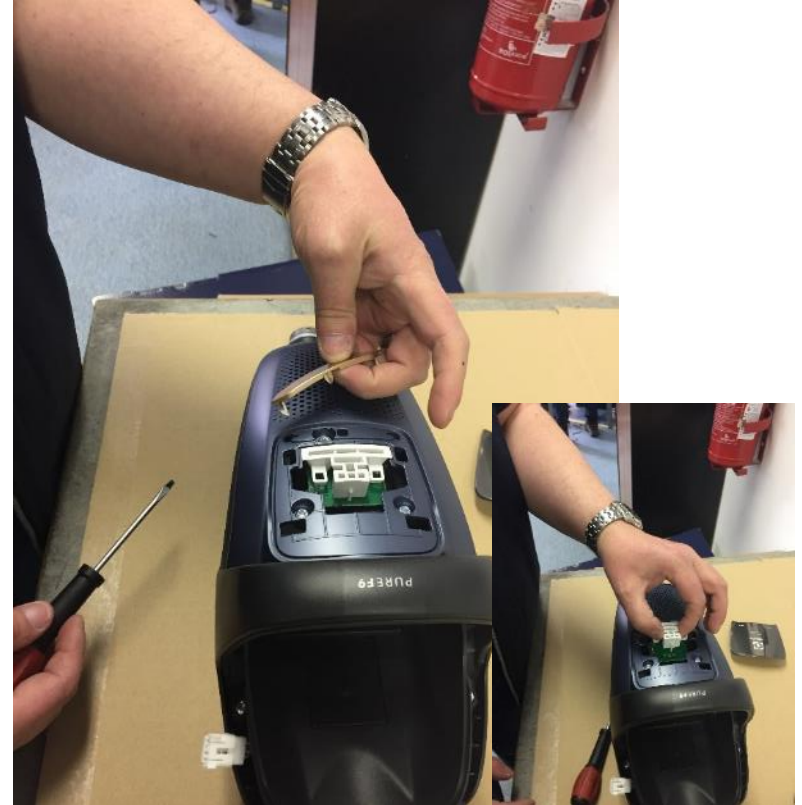
With the help of screwdriver you can push the plastic tab.



You can remove easily the display from the body.



Snap out the lid decor with a screwdriver.



Remove the lid decor and lightguide.



With the help of a screwdriver snap out the lid from the handle on both sides.



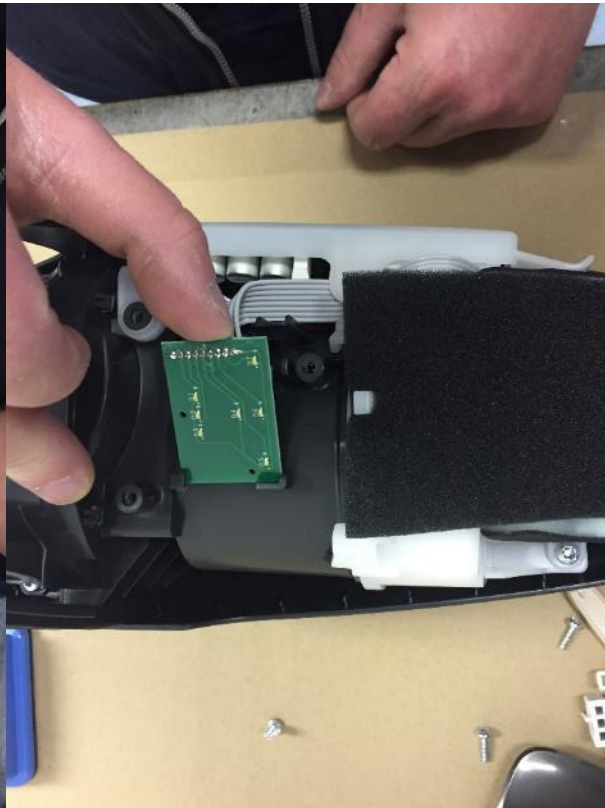
Remove the 3 screws from the lid.



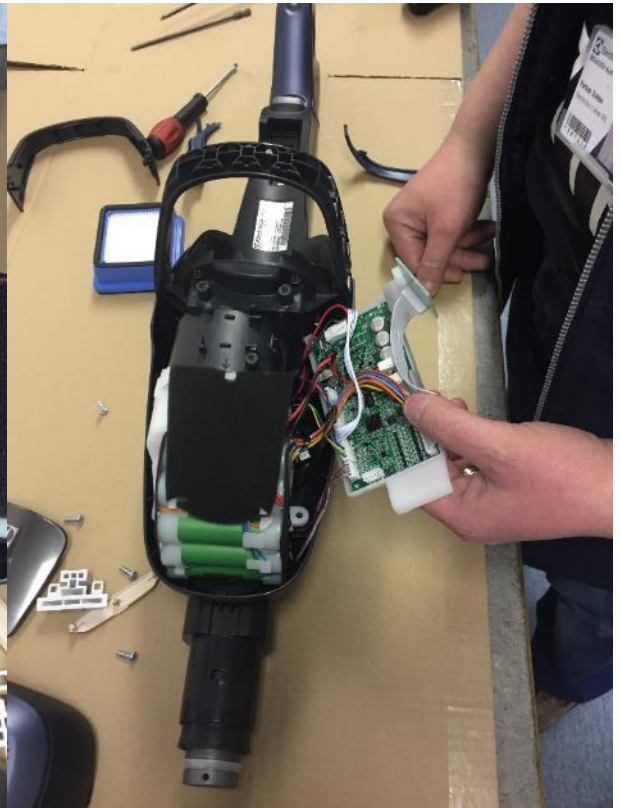
Take off the lid.



Remove the screw.



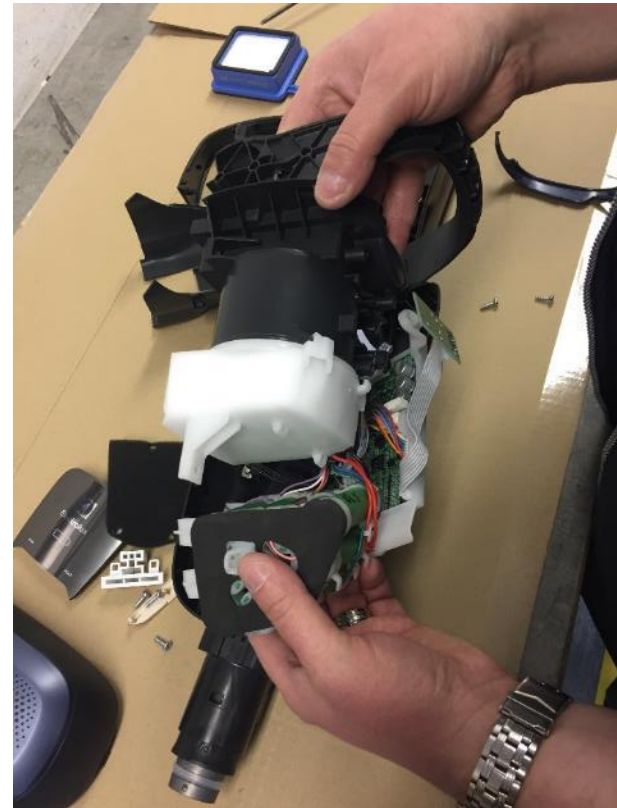
Snap out the panel.



Remove the PCB.

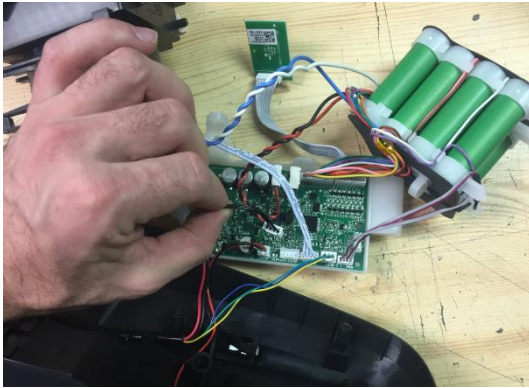


Remove the screws and take out the lid.

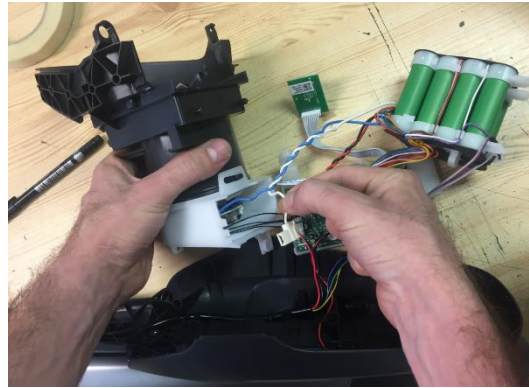


Remove the noise sponge so you can take out the battery pack.

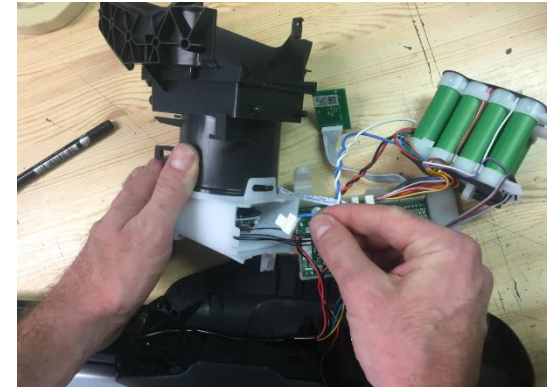




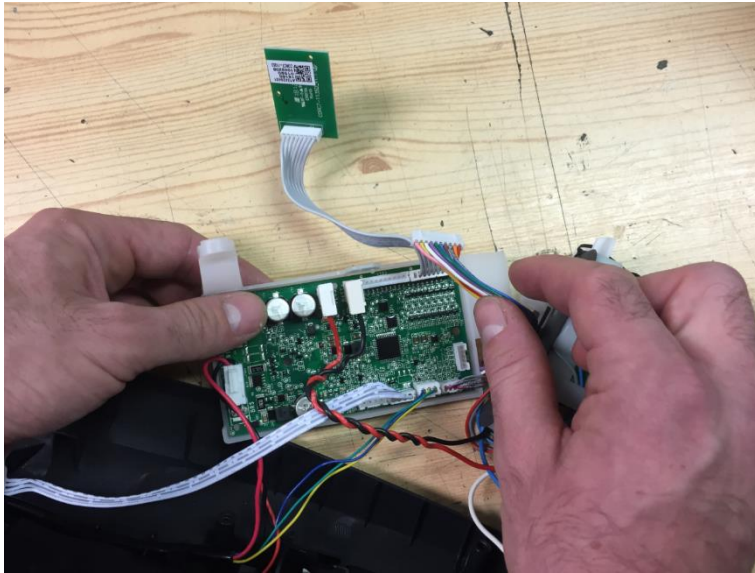
Pull out the motor  
black wire from  
the PCB.



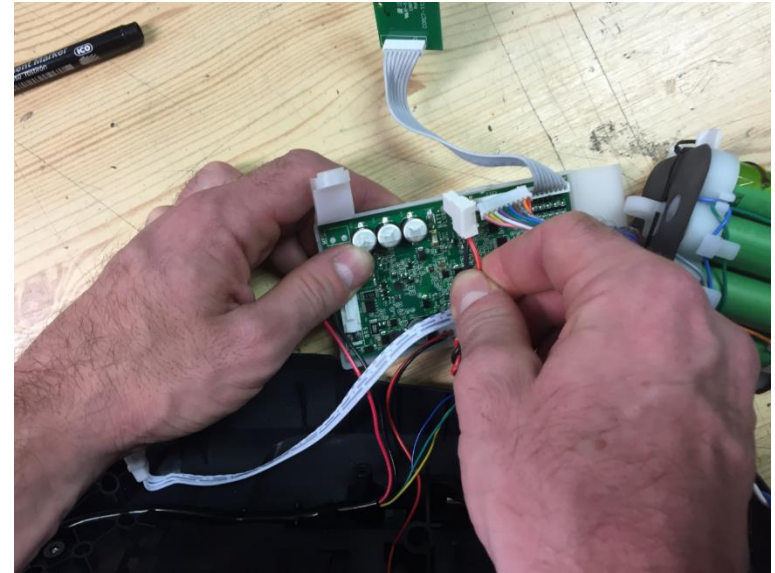
Remove the white  
battery + wire from  
the motor.



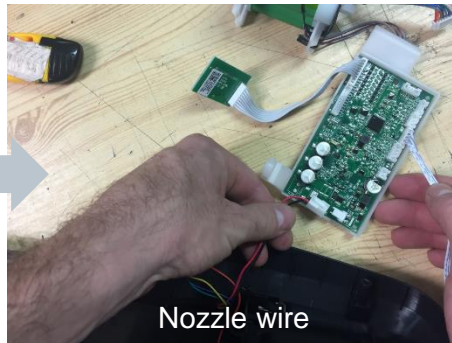
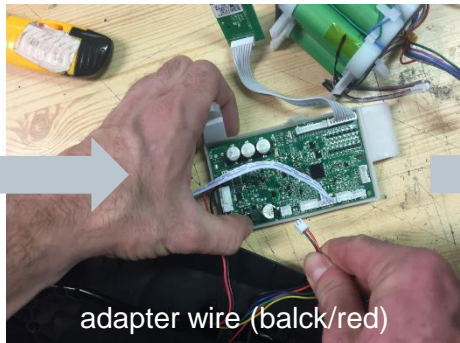
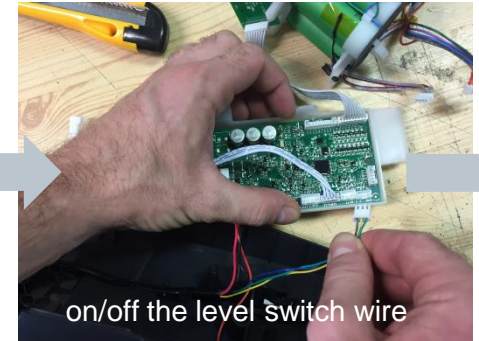
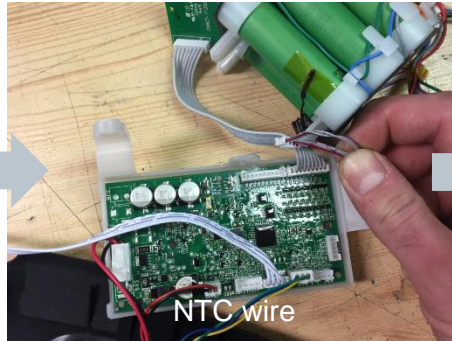
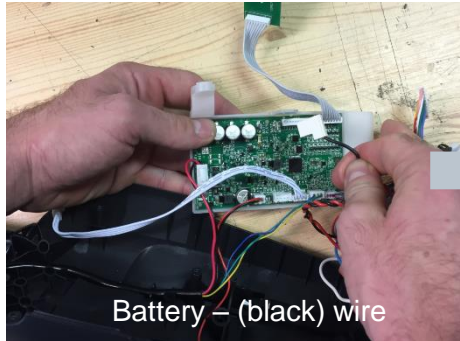
Remove the blue  
battery – wire from  
the motor.



Remove the battery sense wire (rainbow color wire).



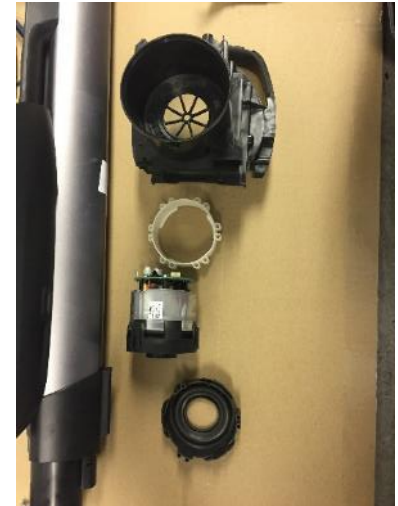
After that pull out the battery + (red) wire from the PCB.



Pull out the wires following sequence so you can remove the battery pack and PCB.



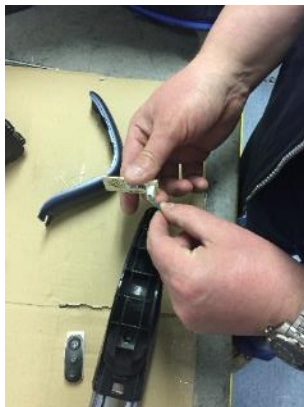
Remove the motor rear house.



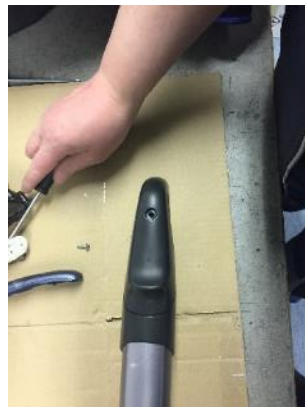
Pull out the black wire, after that you can remove the motor and motor suspensions.



With the help of the screwdriver you can remove the handle lid, after that you take out the knob and handle PCB.



Pull out the wire.

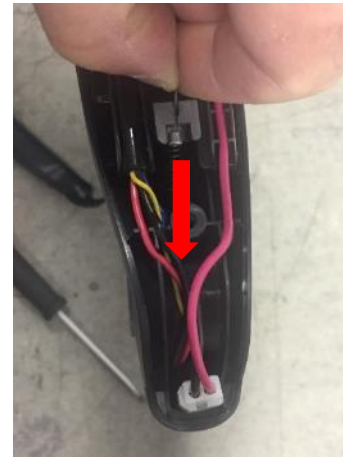


Remove the screw and snap out the handle lid rear with a screwdriver.

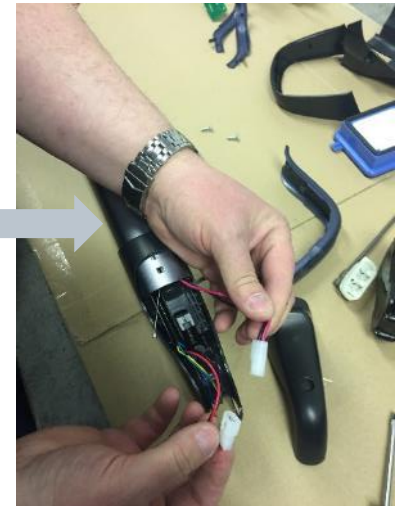




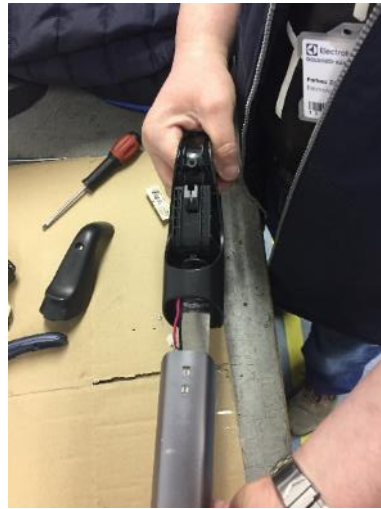
Snap out the spring.



Push the bowden forward.



Pull out the colored wires.



Pull down the handle from the tube.



Snap out the fixing ring and sealing from the tube connection.







Pull down the tube from the body.



Unplug the cord from the lid rear.

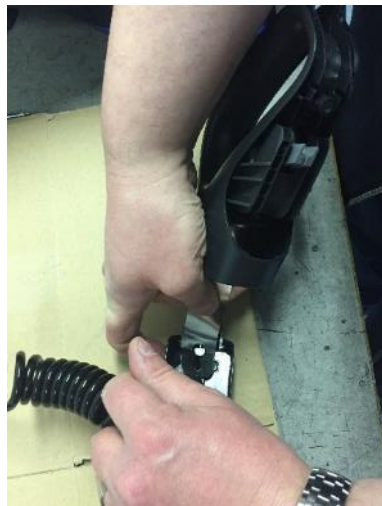


Snap out the spring from the bottom and remove the screw as follows.

1.



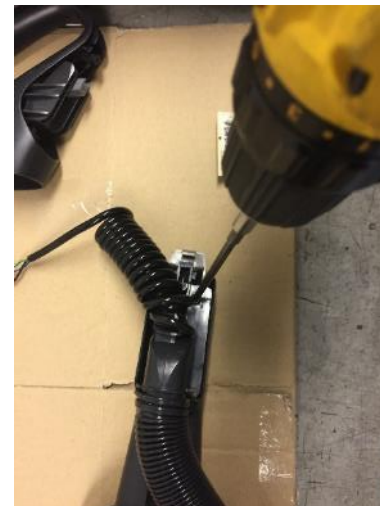
2.

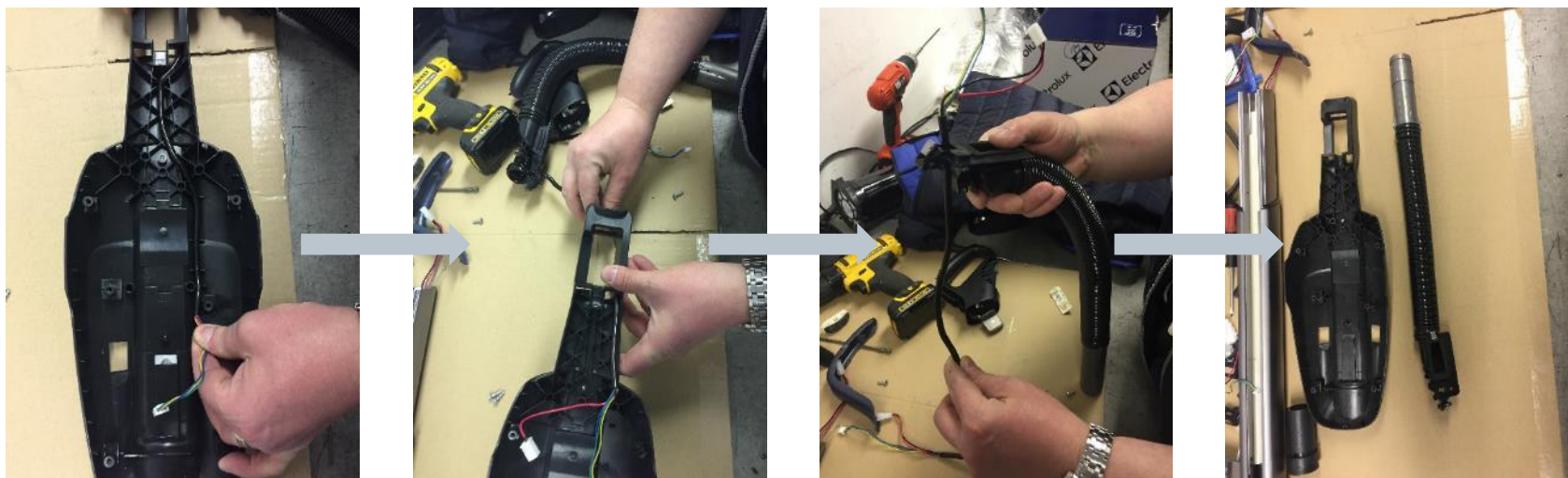


3.



4.



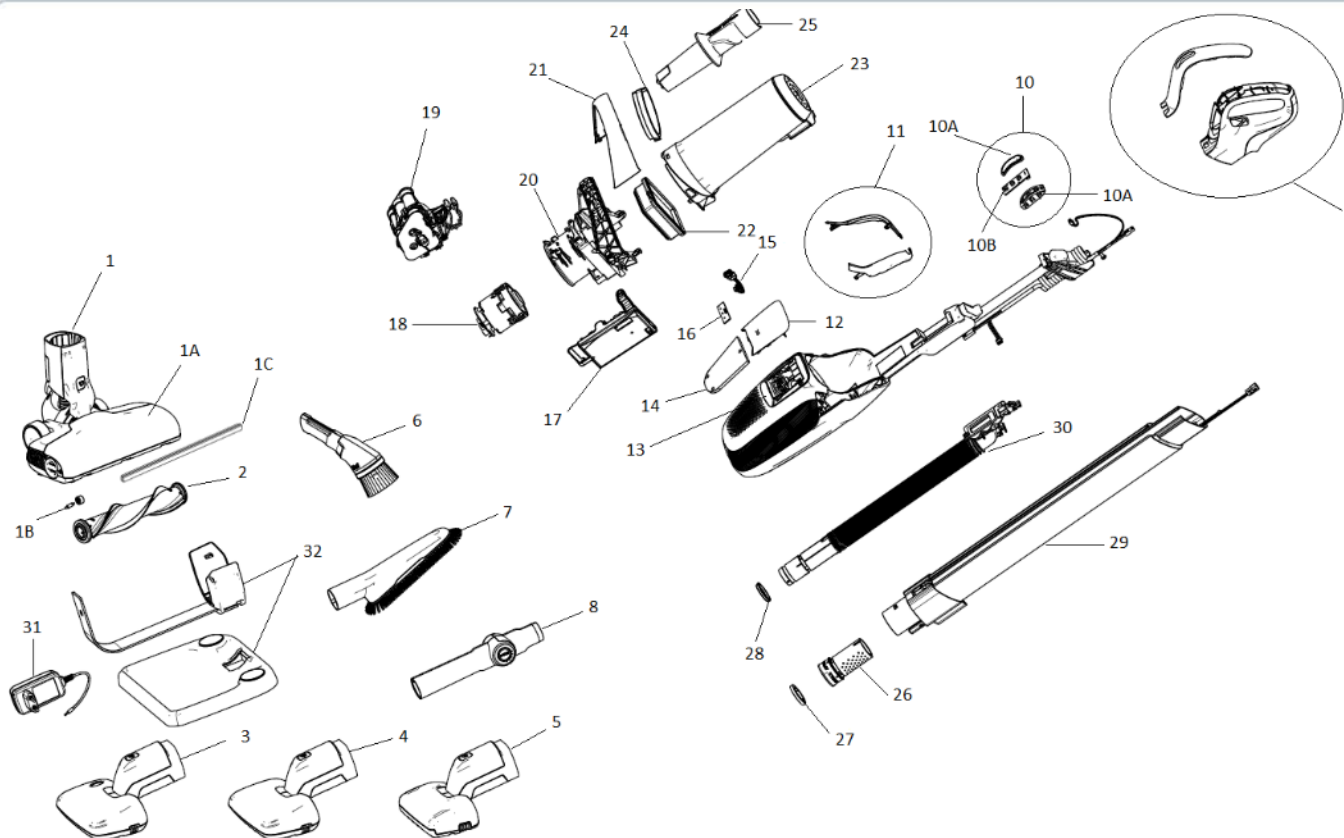


Pull out the wire from the lid rear.

# Service parts plan

*Thinking of you*

**Electrolux**



	Denomination
1	Main nozzle
1A	Lid nozzle
1B	Front wheel + shaft
1C	Plush strip
2	Roller brush
3	Bed nozzle with UV
4	Bed nozzle without UV
5	Pet nozzle
6	Multi 3 in 1 nozzle
7	Delicate nozzle
8	Angle tube
9	Handle
10	Complete switch
10A	Knob handle
10B	PCB handle
11	Lid side
12	Display
13	Lid decoration
14	Noise sponge
15	Service DCPM wire
16	PCB led
17	Main PCB
18	Motor
19	Battery pack
20	Motor hose
21	Handle body
22	HEPA filter
23	Dust container
24	Filter dust container
25	Filter mesh
26	Hose connection (nozzle)
27	Sealing hose connection
28	Fixing ring hose connection
29	Tube
30	Hose
31	Charger
32	Charging stand

*Thinking of you*  
**Electrolux**

Thank you!

