



Electrolux

SERVICE MANUAL

COOKING

FOR INTERNAL AND PARTNERS USE ONLY

© ELECTROLUX HOME PRODUCTS

Consumer Service - EMEA

Quality & Continuous Improvement - Technical Support

Delta Island & Rho Island Range Hood



EN

Publication number

599 821 – 108

Edition: 07/2018 - Rev. 00

CONTENTS

CONTENTS	1
1 PURPOSE OF THIS MANUAL	2
2 SAFETY	3
3 DELTA ISLAND & RHO ISLAND RANGE HOOD	4
4 ACCESSIBILITY	5
5 CIRCUIT 04808167	12
6 TROUBLESHOOTING	13

1 PURPOSE OF THIS MANUAL

The purpose of this Service Manual (SM) is to provide Service Engineers who are already familiar with the repair procedures of Hoods
This SM will provide information on:

- Hood Range
- Accessibility
- Technical and functional characteristics
- Trouble shooter

Document Revisions

Rev.	Date	Description	Author
00	07/2018	Document creation	Said Hatem

Acronyms & Abbreviations

Terms	Initials
Grease Filter	GF
Coal Filter frame	CFF
Blower Assembly	BA
Control Assembly	CA
Led Driver	LD
Feeder Cable	FC

2 SAFETY



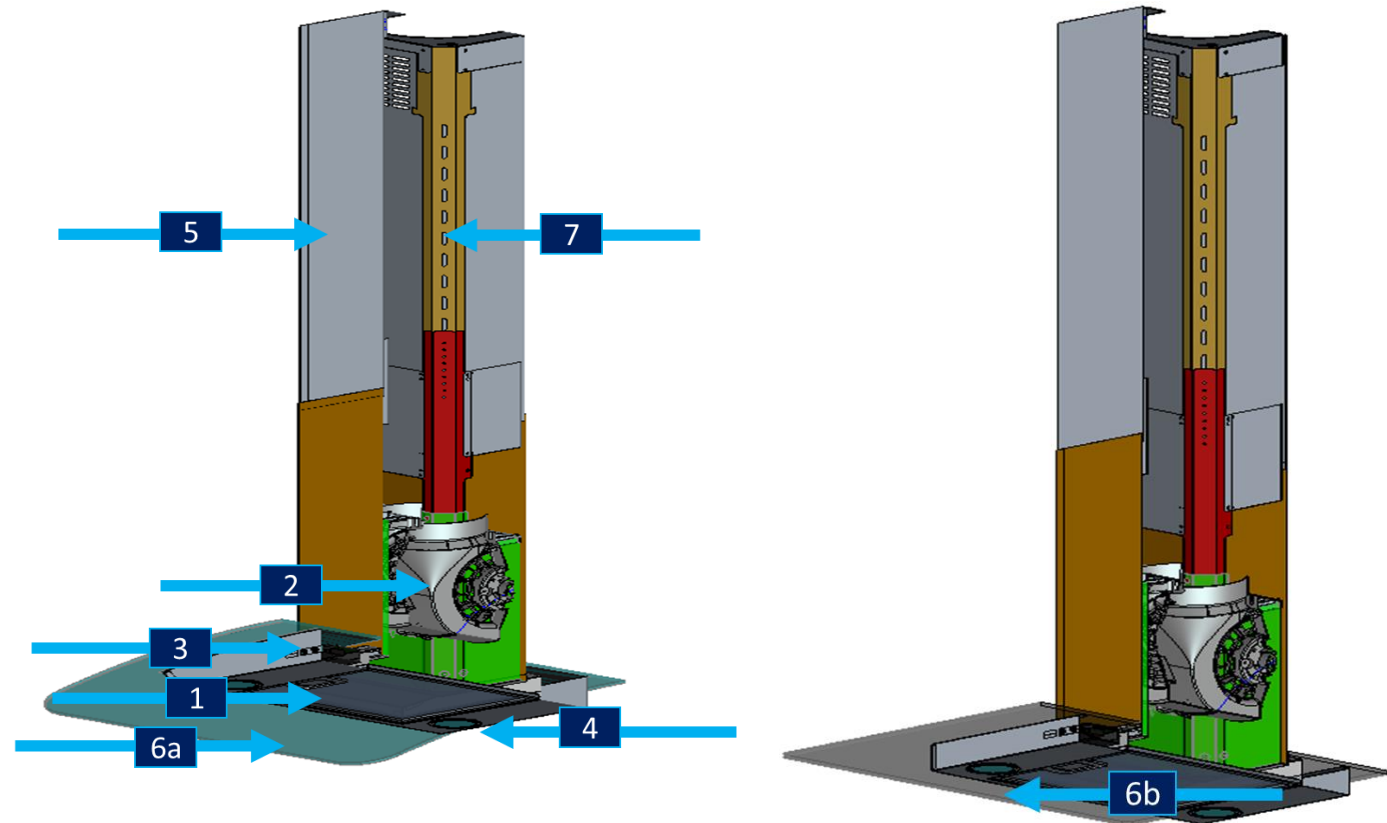
- All the work to be performed inside the appliance requires specific skills and knowledge and may only be carried out by qualified and authorised Service Engineers.
- Before you access internal components, take the plug out of the socket to disconnect the power supply.
- Use a pair of safety gloves to avoid sharp cuts.
- Some of the components in the mechanical part could cause injuries, so wear suitable protection and proceed with caution.
- Prior to touching the light bulbs ensure they are cooled down.

3 DELTA ISLAND & RHO ISLAND RANGE HOOD

3.1 Hood Features

It's a mechanical device which situated upper the cooktop, mainly contains a Blower Assembly, Grease Filters and a Control Assembly.

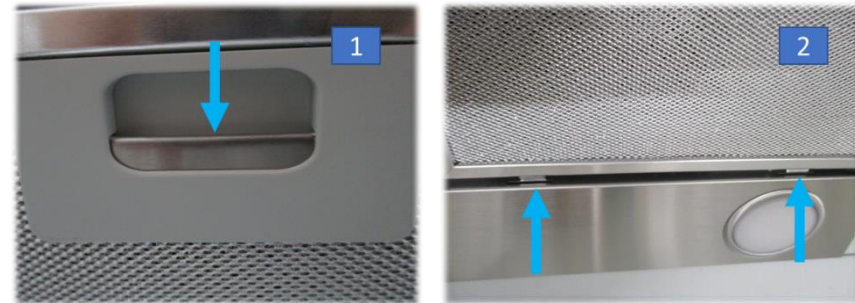
1	Grease Filter
2	Blower Assembly
3	Control Assembly
4	Lamp
5	Pipe
6a	Glass (Delta)
6b	Glass (Rho)
7	Structure



4 ACCESSIBILITY

4.1 Grease Filter

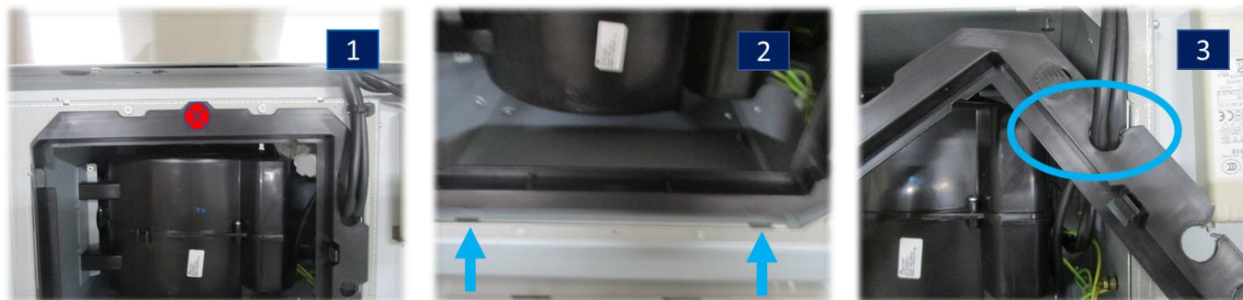
1. Push backward the catch in the handle structure to unsnap the [GF](#).
2. Release the [GF](#) from the slots in the back side of the hood shell.



4.2 Coal Filter Frame

Perform chapter [4.1](#)

1. Unfasten 1* screw which secure the [CFF](#) to the hood shell.
2. Release the [CFF](#) from the slots in the back side of the blower.
3. Extract the cables from the [CFF](#) hole.

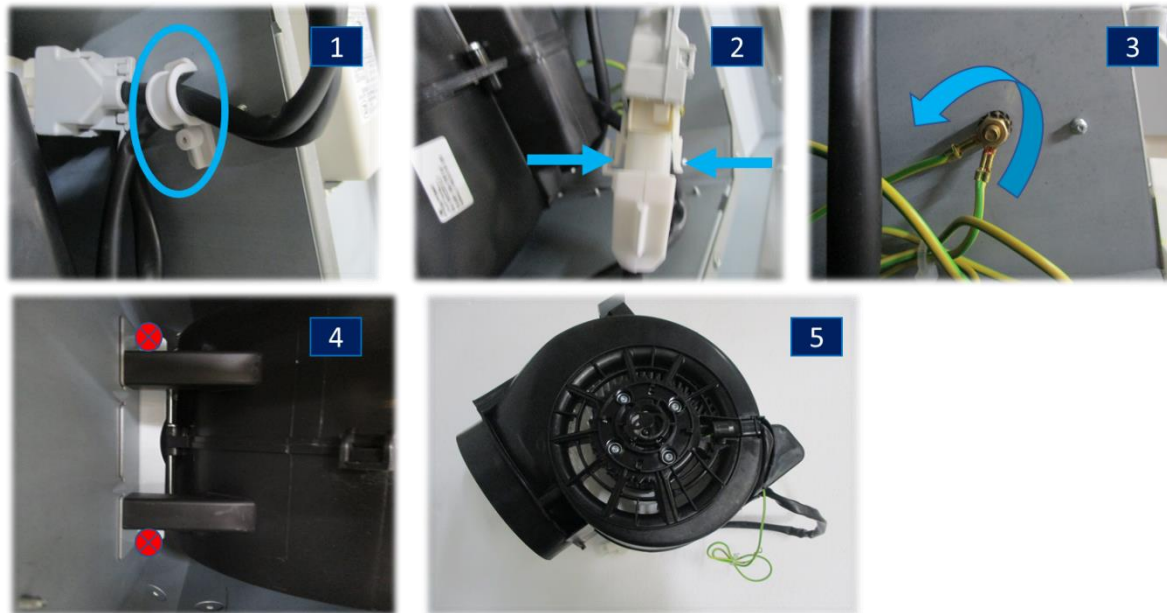


4.3 Blower Assembly(BA)

	MAX Speed	2 nd Speed	MIN Speed	Label
EB25D4PU Motor Power(W)	205	145	125	BEST S.p.A. Code : 06002303 CL.F 220-240V-50Hz 210W 5µF CW THERMALLY PROTECTED GG/M/A

Perform Chapter [4.1](#) and Chapter [4.2](#)

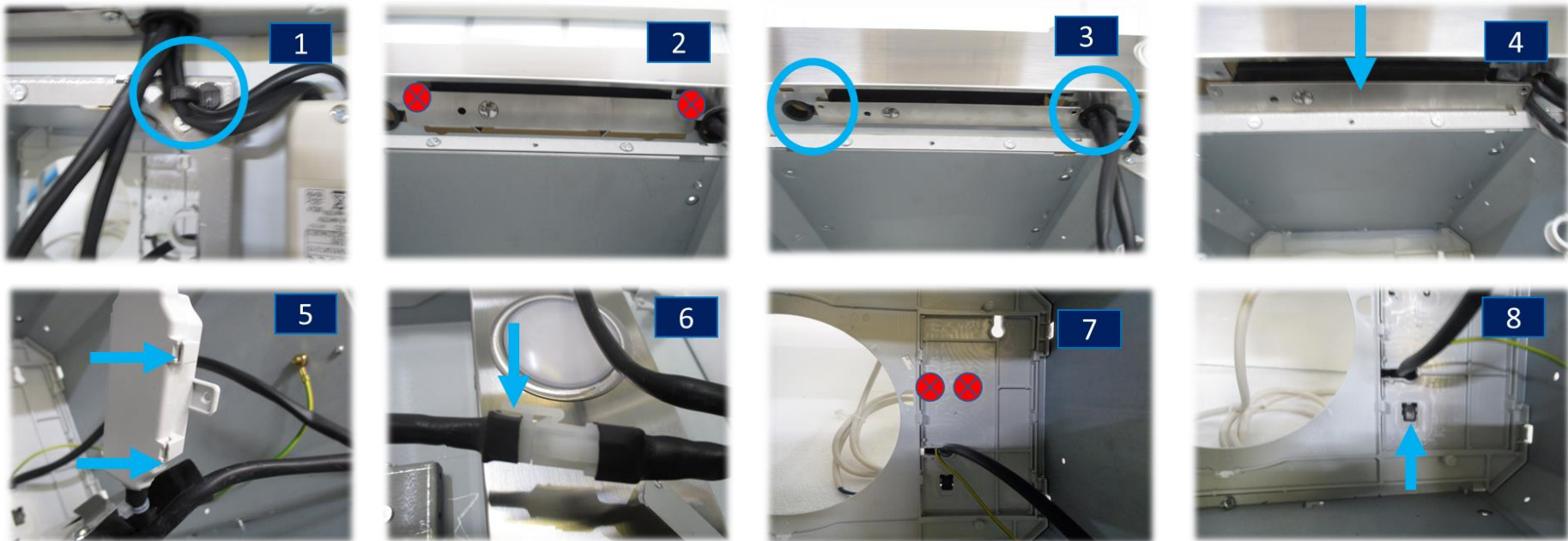
1. Release the cables from the cable hook.
2. Unsnap and pull in opposite direction.
3. Turn the nut anticlockwise to release the ground cable.
4. Unfasten 2* screws which secure the [BA](#) to the hood shell.
5. Extract the [BA](#)



4.4 Control Assembly(CA)

Perform Chapter [4.1](#) , Chapter [4.2](#) and chapter [4.3](#)

1. Release the cables from the cable hook.
2. Unfasten 2* screws which secure the [CA](#) to the hood shell.
3. Unsnap the cable passers.
4. Extract the [CA](#) from the hood shell.
5. Unsnap to open the [LD](#) connection box.
6. Unsnap and pull in opposite direction to disconnect the [LD](#).
7. Unfasten 2* screws which secure the power supply connection box to the upper cover.
8. Pull up the power supply connection box.



9. Unfasten 1* screw which secure the cover of the power supply connection box.

10. Loosen 3* screws which secure the cables to the junction clamp.
11. Extract the [CA](#).
12. Unfasten 2* screws which secure the [CA](#) to the metal holder.



4.5 Led Driver (LD)

Perform chapter [4.1](#)

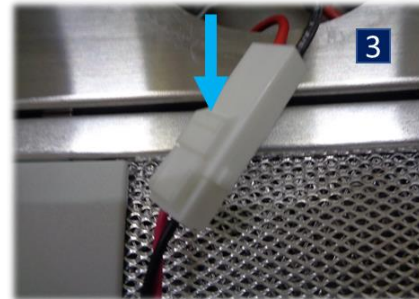
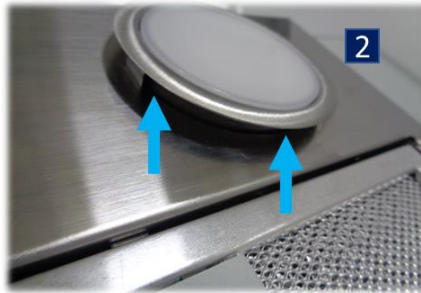
1. Unfasten 1* screw which secure the [LD](#) to the hood shell.
2. Unfasten 1* screw which secure the cover of the [LD](#).
3. Loosen 4* screws which secure the lamps and the power connections.



4.6 Lamp

! Use a thin plastic tool to avoid scratches on the hood shell.

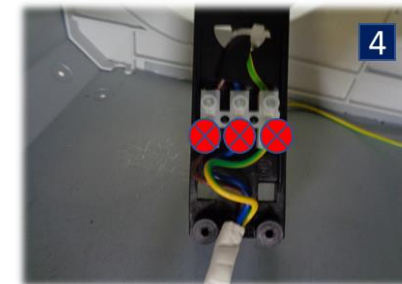
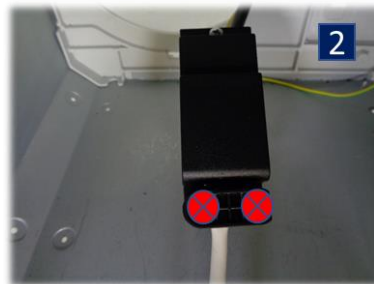
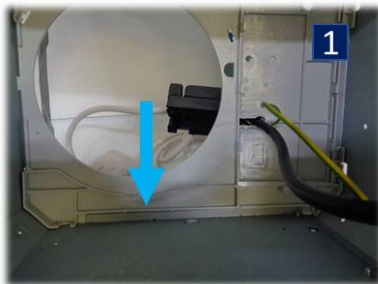
1. Press sequentially from both sides to unsnap the lamp.
2. Extract the lamp.
3. Unsnap the connector and pull in opposite direction.



4.7 Feeder Cable

Perform Chapter [4.1](#) , chapter [4.2](#) , chapter [4.3](#) and the 7th step of chapter [4.4](#)

1. Move down the connection box.
2. Unfasten 2* screws which secure the hanger cable clamp to the connection box.
3. Unfasten 1* screw which secure the cover of the connection box.
4. Loosen 3* screws which secure the cables to the junction clamp.



4.8 Pipe

! Two persons needed to perform this chapter

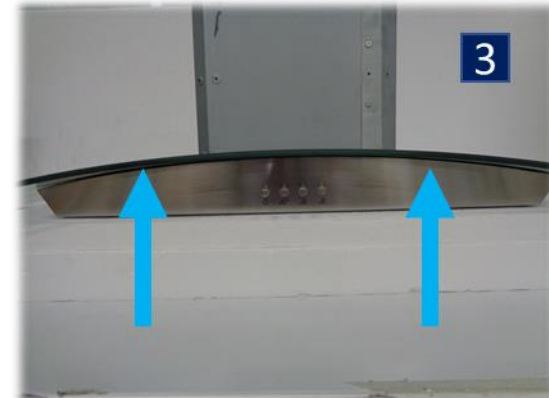
1. Lift the lower pipe.
2. Use an adhesive tape in the 4 sides of the pipe to unite it to the upper pipe.
! Keep holding the hood during the performing of the next step.
3. Unfasten 4* screws which secure the hood to the installation structure and pull down the hood.
! Keep holding the pipes during the performing of the next step.
4. Unfasten 2* screws which secure the upper pipe to the installation structure.
5. Pull down the pipes.



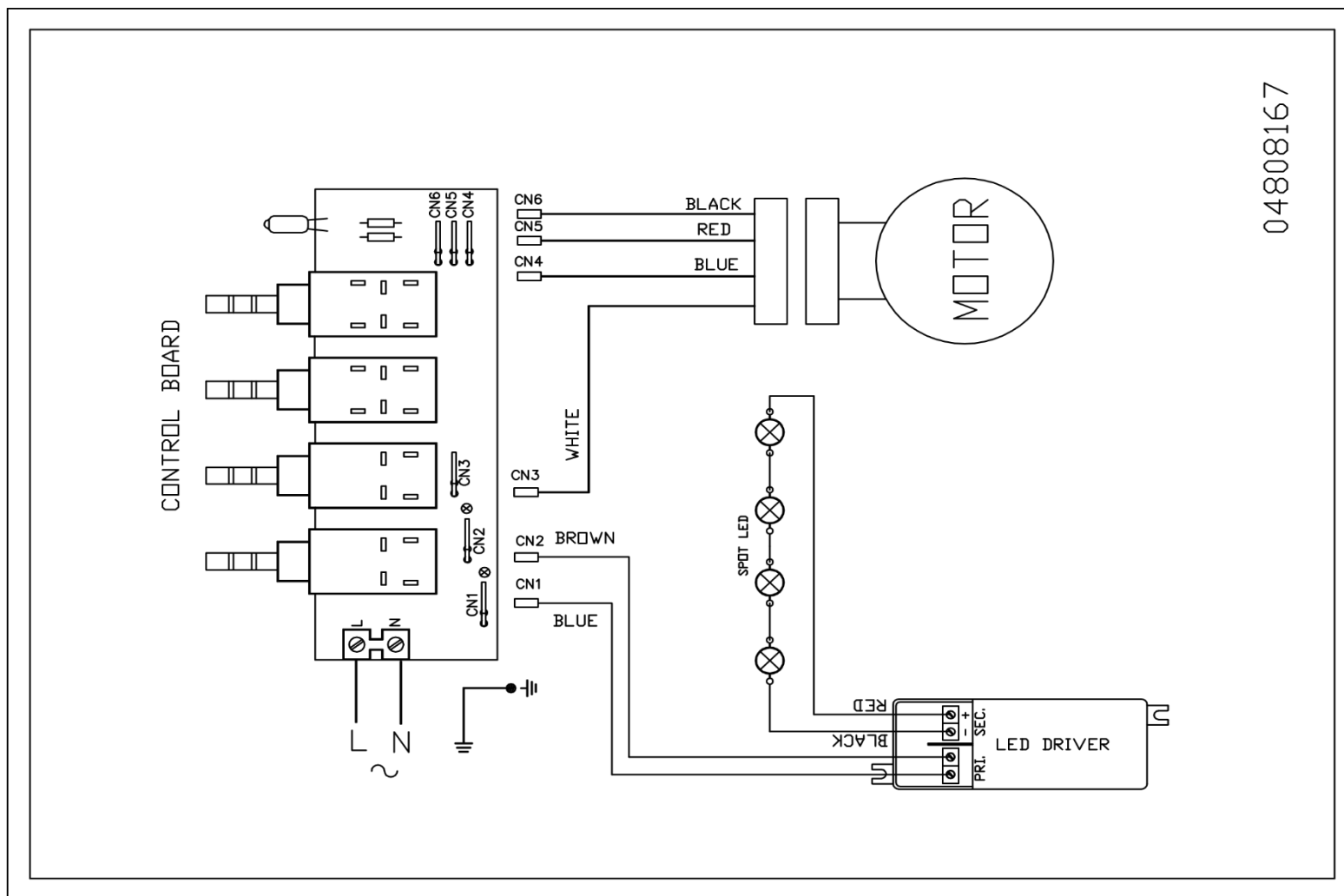
4.9 Glass

Perform 1st, 2nd, 3rd and 4th steps of chapter [4.8](#)

1. Put the hood over a working table.
2. Unfasten 4* screws Which secure the glass to the hood shell
3. Lift and remove the glass from two opposite sides



5 CIRCUIT 04808167

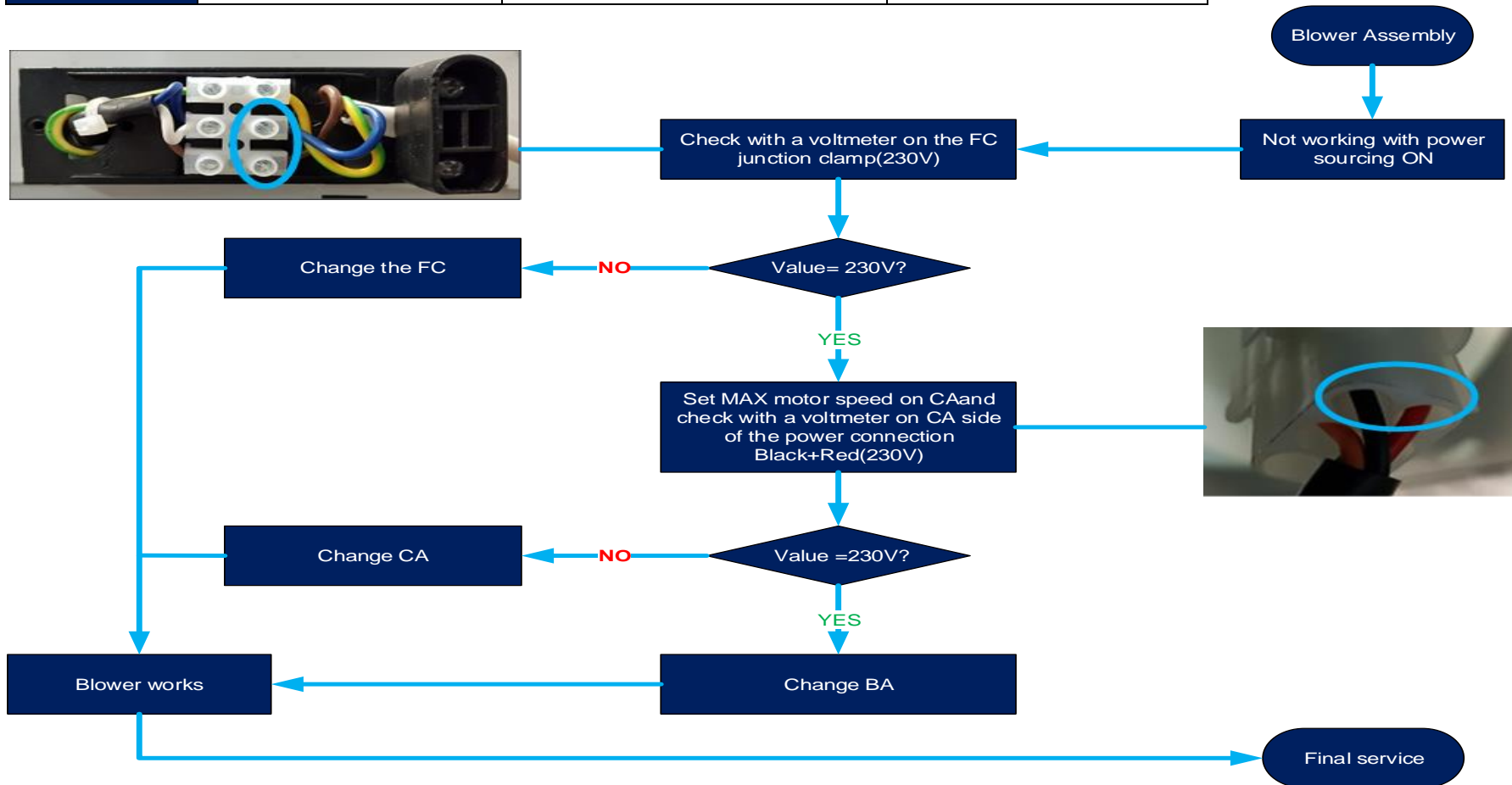


04808167

6 TROUBLESHOOTING

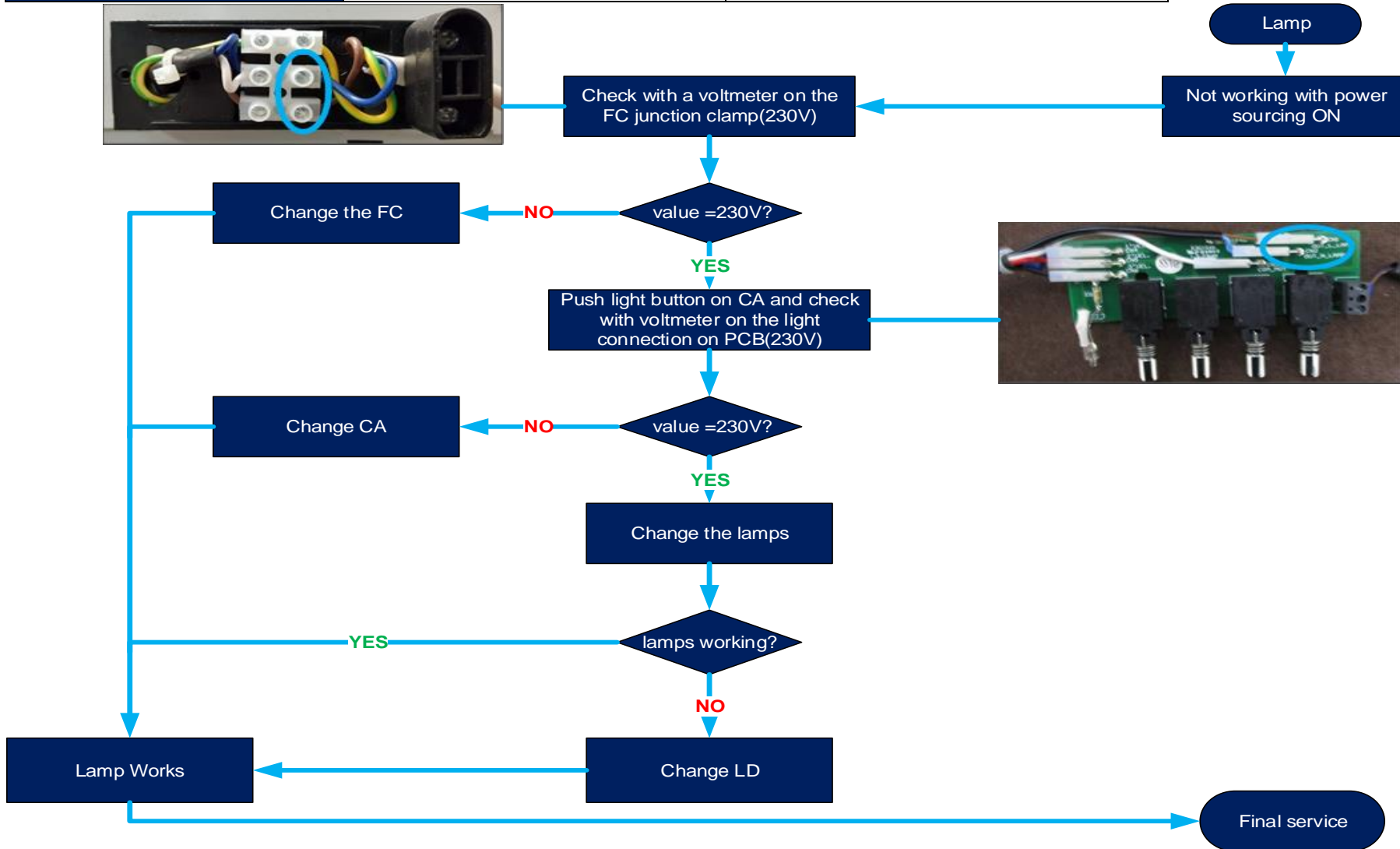
6.1 Blower Assembly

Term	Feeder Cable	Control Assembly	Blower Assembly
Initial	FC	CA	BA



6.2 Lamp

Term	Printed Circuit Board	Led Driver
Initial	PCB	LD



6.3 Control Assembly

