

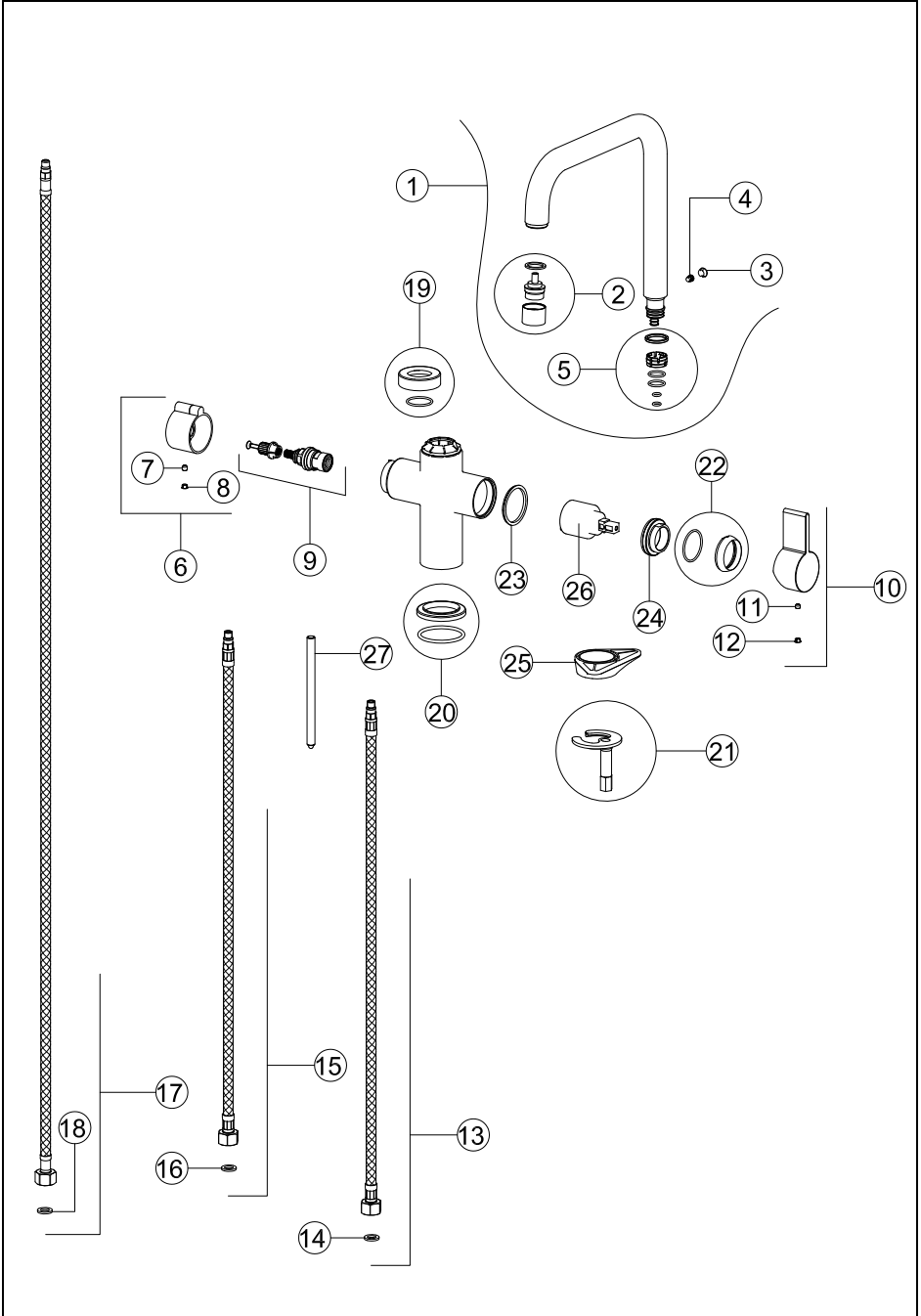
GYT11012CB
GYT12012CB
GYT11012SB
GYT12012SB

EN Service manual



AEG

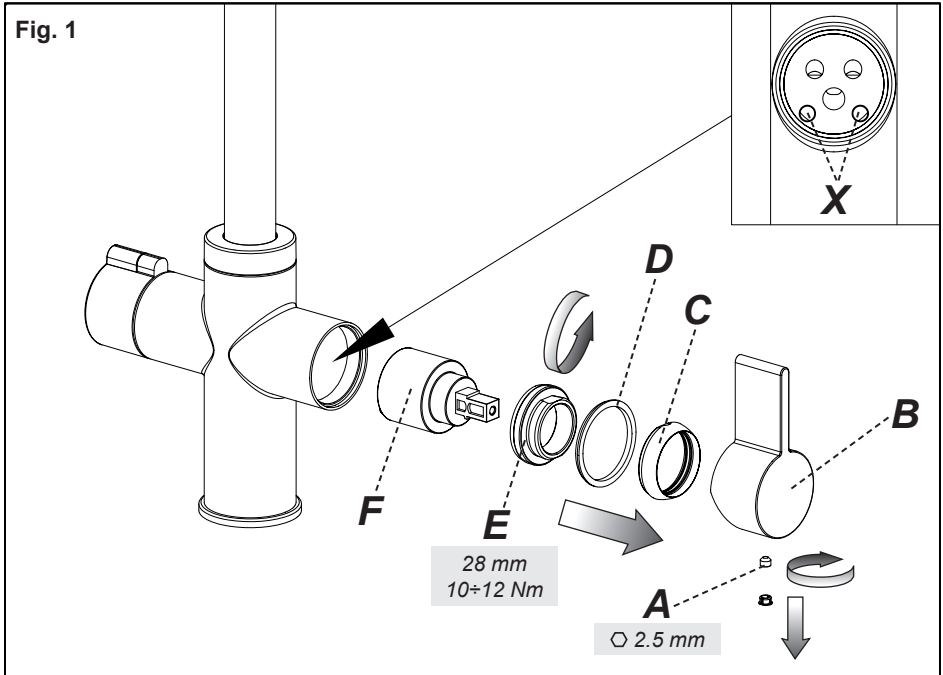
MAINTENANCE



Pièces de rechange:

- 1 - Full spout
- 2 - Aerator
- 3 - Finish plugs
- 4 - M6 screw
- 5 - Gasket kit / anti-friction
- 6 - Boiling water handle
- 7 - M5x5 grub screw
- 8 - Handle cap
- 9 - Head valve
- 10 - Mixer handle
- 11 - M5x4 grub screw
- 12 - Handle cap
- 13 - Supply hose (BLUE)
- 14 - 3/8" gasket
- 15 - Supply hose (RED)
- 16 - 3/8" gasket
- 17 - Supply hose (NEUTRAL)
- 18 - 3/8" gasket
- 19 - Finish ring nut
- 20 - Base
- 21 - Fastening set
- 22 - Ring nut cover
- 23 - Dial ring
- 24 - Cartridge fastening ring nut
- 25 - Plastic reinforcement
- 26 - Cartridge
- 27 - Threaded stem

Fig. 1



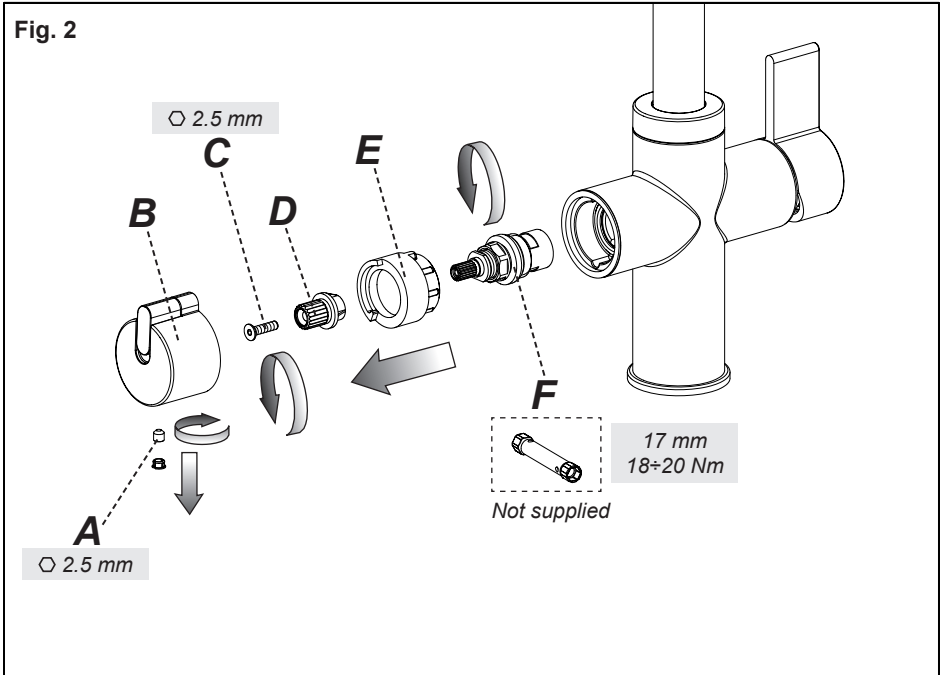
CARTRIDGE REPLACEMENT

Before carrying out this operation make sure that water mains are off and that the mixer is at a temperature good for handling.

Remove the finish plug paying attention not to damage it and unscrew the screw (A) using an Allen key, remove the handle (B) from the cartridge (F). Lift the finishing ring nut (C) using the reference notch. Remove the indicator ring (D), unscrew the fixing ring nut (E) and take the cartridge (F) out from the mixer body.

Put the new cartridge into the body checking that the two centering pins enters into the respective seats (X) and that gaskets are well positioned.

Fig. 2



HEADVALVE REPLACEMENT

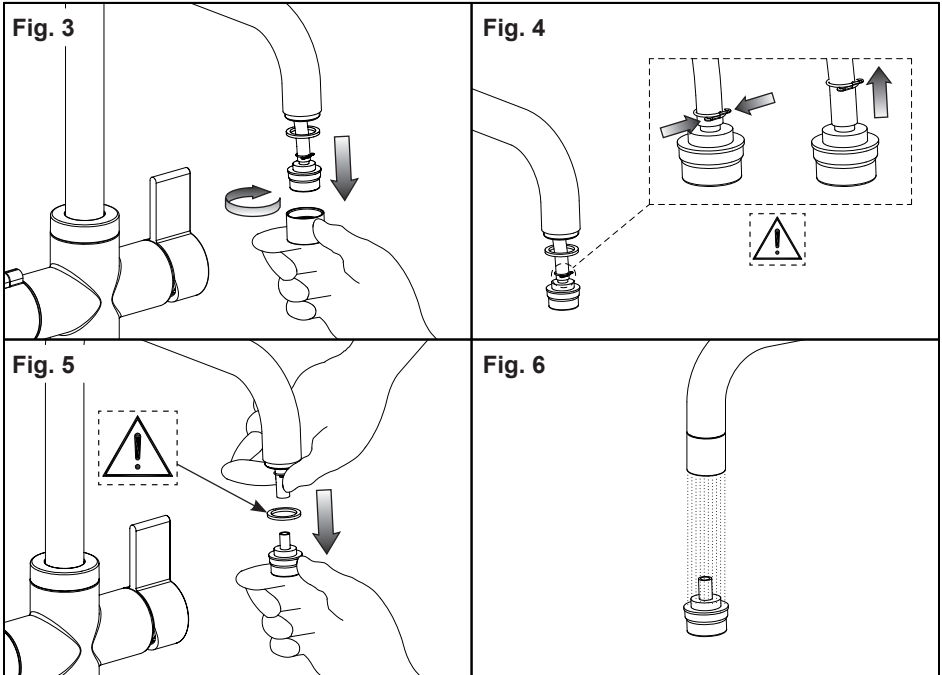
Before carrying out this operation make sure that water mains are off and that the mixer is at a temperature good for handling.

Remove the finish plug paying attention not to damage it and unscrew the screw (A) to extract the handle (B). Unscrew the screw (C) and remove the bush (D). Remove the safety system (E).

Then disassemble the head screw (F) with a 17mm wrench and replace it.

WARNING: During this procedure check that the supporting surfaces are clean from any impurities and that the screwdown seals is correctly positioned

Reinstall all the details, proceeding in opposite order.



AERATOR CLEANING / REPLACING

Before carrying out this operation make sure that water mains are off and that the mixer is at a temperature good for handling.

If water supply is not fluid unscrew manually the aerator-holder and separate the filter from the tube inside the spout keeping it down firmly.

If the filter is clogged just rinse it with running water without using any detergents.

If it is damaged it can be replaced, together with a new gasket, and they have to be reassembled in the opposite sequence.

www.aeg.com/shop



AEG