



**Electrolux**

# SERVICE MANUAL

## BLAST CHILLER



EN

Publication number  
599 82 0870  
Edition: 07/2018 - Rev. 00

FOR INTERNAL AND PARTNERS USE ONLY

© ELECTROLUX HOME PRODUCTS  
Consumer Service - EMEA  
Quality & Continuous Improvement - Technical Support

## **CONTENTS**

Installation	page 4
Accessible parts	page 5
Replacement of components on the outside of the equipment	page 6
Replacement of components on the inside of the equipment	page 9
Problems and solutions	page 17

# Installation



## **CAUTION!**

The appliance must be installed by qualified personnel only.

- Remove the packaging material.
- Do not install or use the appliance if damaged.
- Comply with the instructions supplied with the appliance.
- Always pay attention when moving the appliance. Always wear safety gloves.
- Do not turn the appliance upside down or tilt it! This may cause oil to leak from the pump and damage the equipment.
- Respect the minimum distance from other appliances.
- Make sure the appliance is installed and secured to a fixed structure.
- The sides of the appliance must be adjacent to other equipment or units having the same height.

## **Electrical connection**



## **CAUTION!**

Risk of fire and electric shock.

- All the electrical connections must be made by a qualified electrician.
- The appliance must be earthed.
- Make sure that all the electrical data shown on the data plate correspond to those of the system. Otherwise, contact an electrician.
- Always use an electrical outlet with a correctly installed protective contact.
- Do not use multi-plug adapters or extension cables.
- Make sure not to damage the mains plug and the mains cable. If the power cable must be replaced, this should be carried out by our Assistance Centre.
- Shock protection devices must be fastened in such a way that they cannot be removed without tools.
- Connect the mains plug to the mains socket only once installation has been completed.
- Do not connect the mains plug if the mains socket is loose.
- Do not pull the mains cable to disconnect the appliance. Pull only the mains plug.
- Use only suitable isolation devices: circuit breakers, fuses (screw type fuses must be removed from the fuse holder), earth fault current releases and relays.
- The electric system must be equipped with an isolation device that allows you to disconnect the appliance from the mains at every pole. The isolation device must have a contact opening width of a minimum 3 mm.
- This appliance complies with the EEC directives.

# Accessible parts

This chapter explains how to access and remove the various parts of the machine. Depending on the part to be removed, other parts may have to be removed first. To reassemble a part, follow the instructions in the reverse order.



**The operations described below must be carried out by staff who are trained and qualified for this type of intervention.**

**Before carrying out these operations make sure that the machine has been disconnected from the power supply!**

## Replacement of components on the outside of the equipment

To replace or perform maintenance on these components just open the Blast chiller and perform the required work.

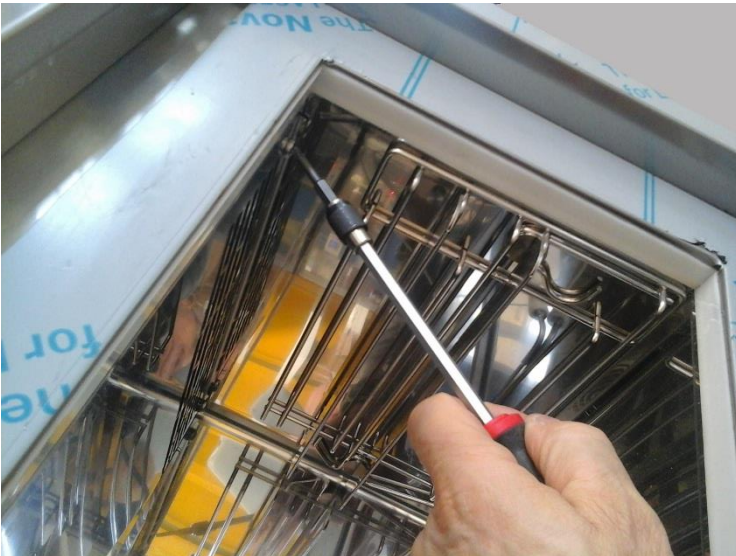
Here is the work you can perform with the above procedure:

- Replacement of the inside fan
- Replacement of the external fans
- Replacement of the cover gasket
- Replacement of the micro switch
- Replacement of the hinges
- Replacement of the dashboard

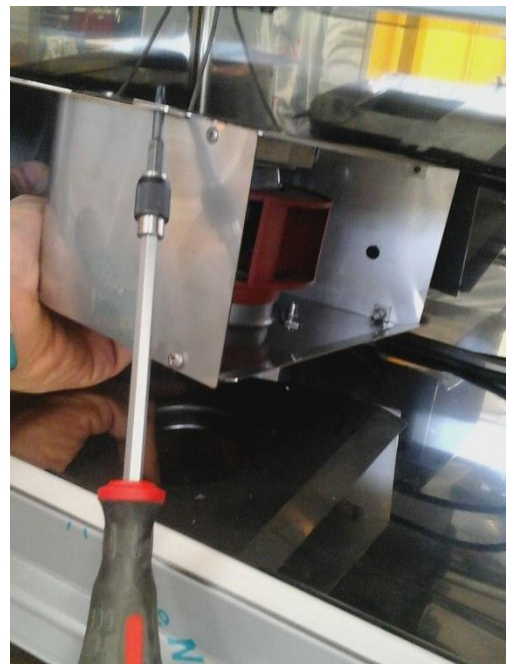
## Replacement of the inside fan

Remove the cell roof (Fig.1.1) and the internal fan support (Fig.1.2), then disassemble the fan and replace it (Fig.1.3) (Fig.1.4).

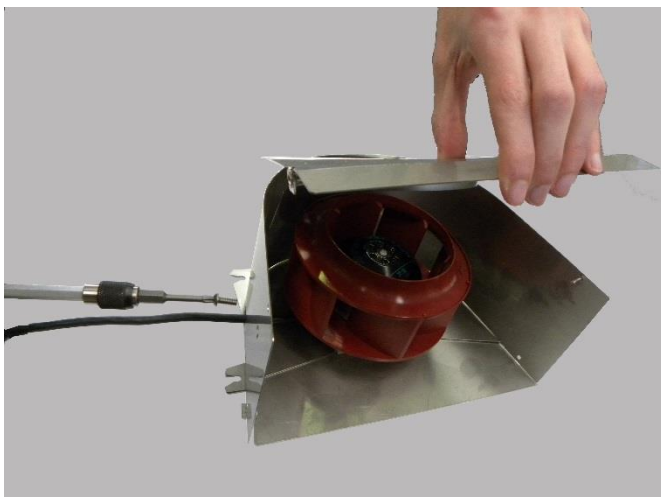
(Fig. 1.1)



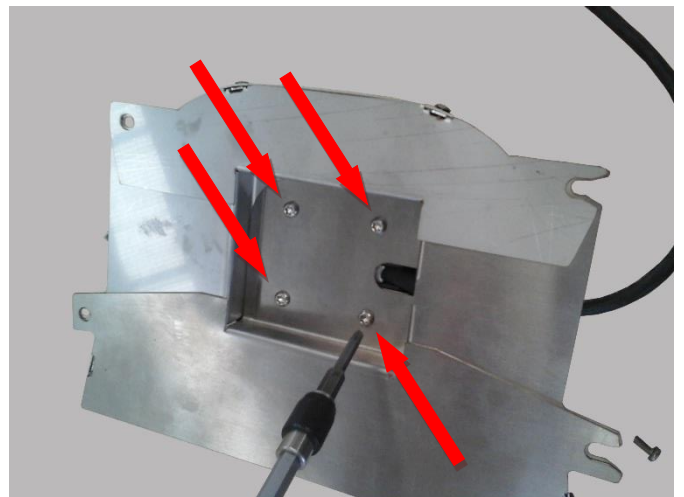
(Fig. 1.2)



(Fig. 1.3)



(Fig. 1.4)



## Replacement of the external fans

Remove the back of the machine and disconnect the external fan cables.  
After removing the crankcase with the fans (Fig.1.5), replace them with the wiring harness (Fig.1.6).

(Fig. 1.5)



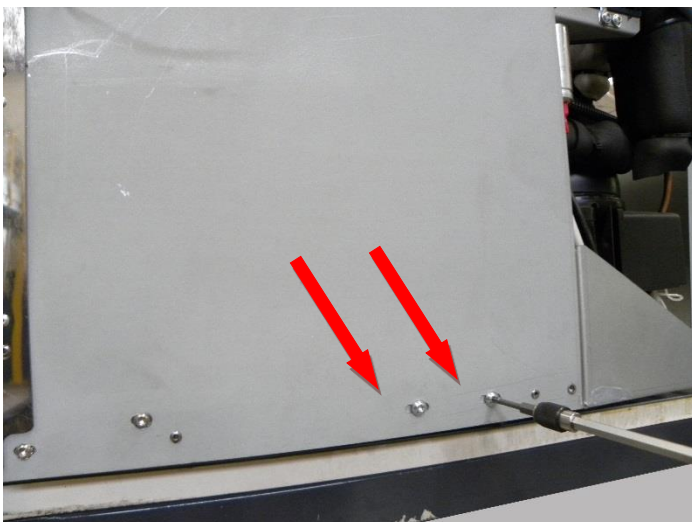
(Fig. 1.6)



## Replacement of the micro switch

Remove the two outer screws to detach the micro (Fig.1.7), unscrew the fixing bracket to replace the workpiece (Fig.1.8), paying attention to the direction.

(Fig. 1.7)



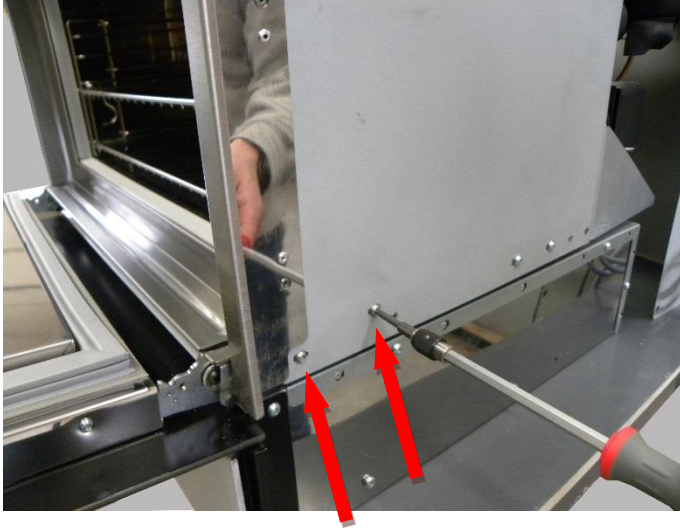
(Fig. 1.8)



## Replacement of the hinges

Remove the four screws on the outside of the body to remove the door (Fig.1.9) and unscrew the latter on the door to remove the hinges (Fig.1.10).

(Fig. 1.9)



(Fig. 1.10)



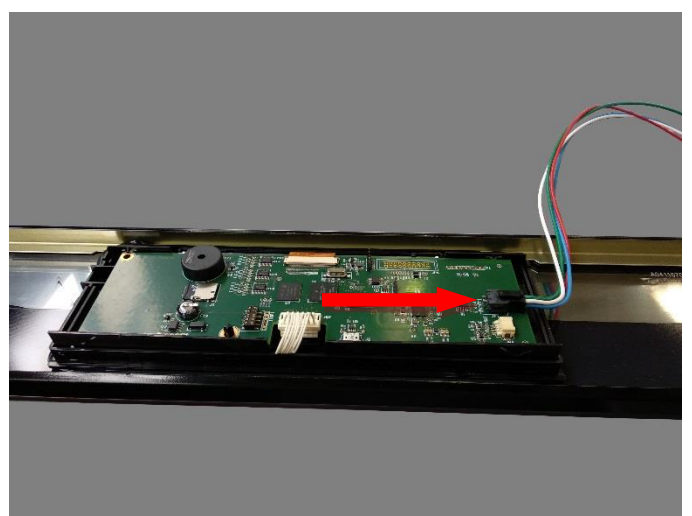
## Replacement of the dashboard

Remove the dashboard by unscrewing the two screws on the back (Fig.1.11), to remove the wiring display remove the black cover, then disconnect the cable (Fig.1.12).

(Fig. 1.11)



(Fig. 1.12)



## Replacement of the cover gasket

Pull away the gasket and replace it by following the gasket outline (Fig.1.13).

(Fig. 1.13)



## Replacement of components on the inside of the equipment

To replace or perform maintenance on these components is necessary to remove the equipment from the recessed area of the unit. Place it on a worktop and carry out the procedure described below:

Here is the work for which you need to follow the above procedure:

- Replacement of the power board
- Replacement of the terminal box
- Replacement of the condenser probe
- Replacement of the evaporator probe
- Replacement of the cell probe
- Replacement of the capacitor
- Replacement of the schuko plug
- Replacement of the fuse
- Replacement of the leds
- Replacement of the transformers for led
- Replacement of the rotary



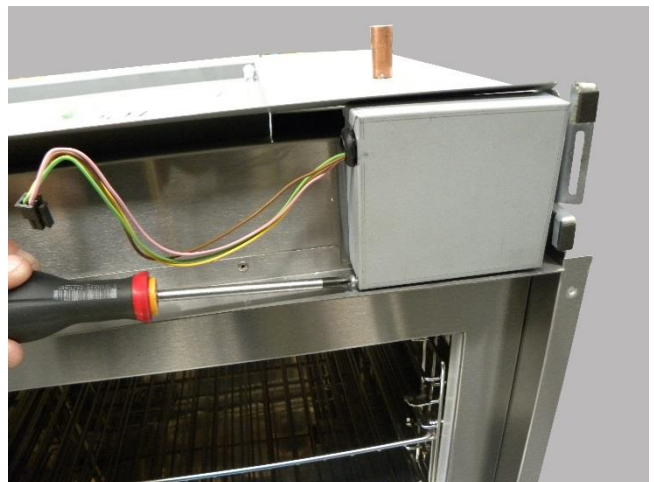
## Replacement of the power board

Remove the dashboard by unplugging the display cable (Fig.1.14). Then remove the protection plate of the power board by unscrewing the two side screws (Fig.1.15). Disconnect the various power board connectors (Fig.1.16) and press the spacers with a clamp to pull the power board out (Fig.1.17).

(Fig. 1.14)



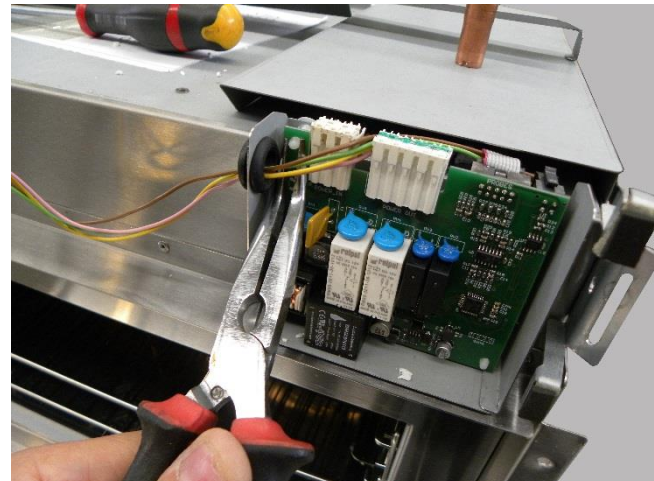
(Fig. 1.15)



(Fig. 1.16)



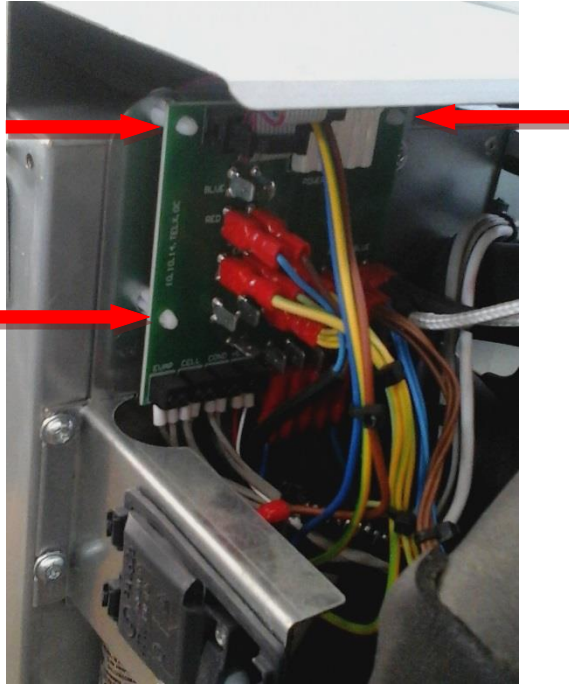
(Fig. 1.17)



## Replacement of the terminal box

After removing the back of the machine, unplug the wiring from the board and follow the same procedure used to remove the power board. Replace the terminal box, paying attention to the proper wiring (Fig.1.18).

(Fig. 1.18)



## Replacement of the condenser probe

First unplug the probe from the terminal strip, then proceed with the removal of the probe. Be careful to reposition it in the same place as before (Fig.1.21).

(Fig. 1.21)



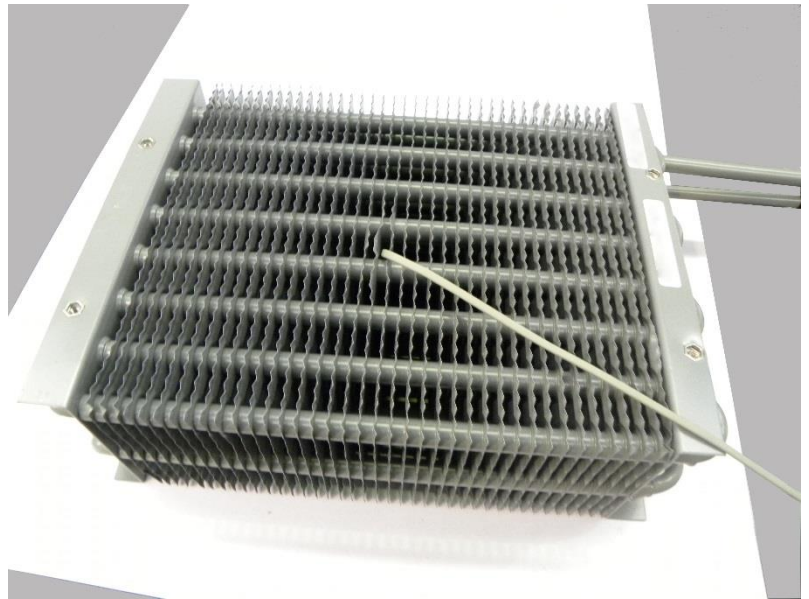
## Replacement of the evaporator probe

After removing the cell roof and the evaporator bulkhead (Fig.1.22), pull out the probe from the evaporator and replace it by inserting the new probe into the previous position (Fig.1.23).

(Fig. 1.22)



(Fig. 1.23)



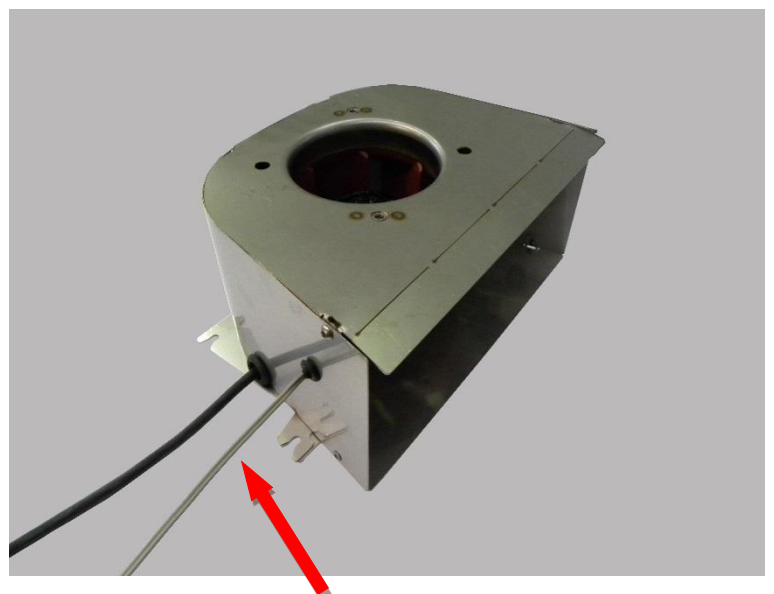
## Replacement of the cell probe

Remove the cell roof and the internal fan support (Fig.1.24), then remove the probe shown in the figure and replace it (Fig.1.25).

(Fig. 1.24)



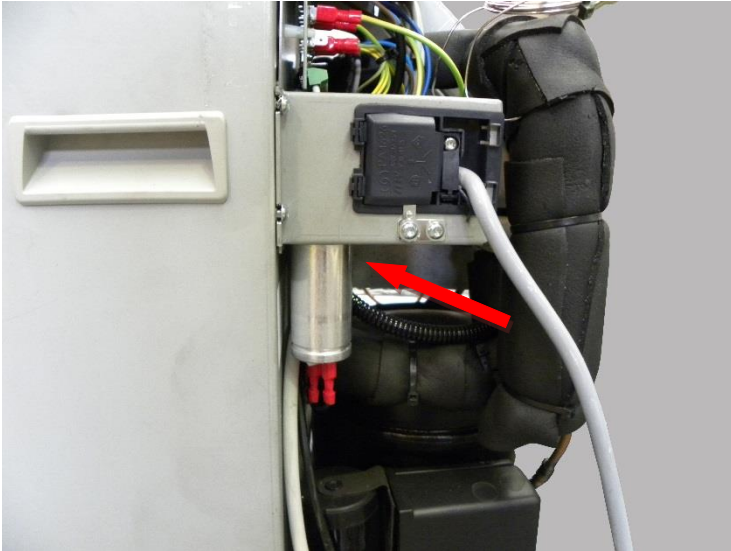
(Fig. 1.25)



### Replacement of the capacitor

Unscrew the nut that attaches the capacitor to the power adapter and replace it (Fig.1.26).

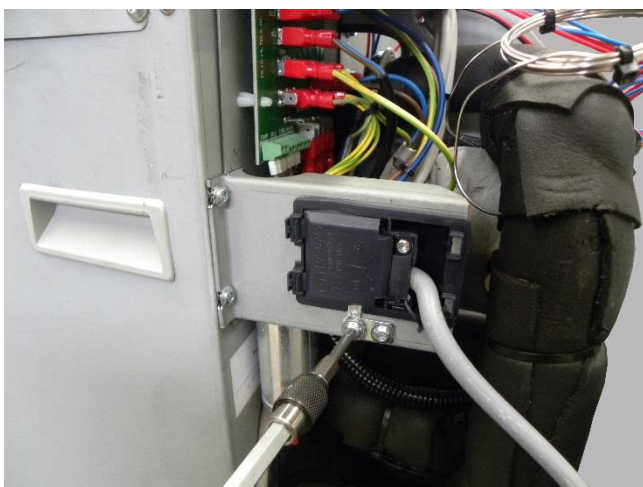
(Fig. 1.26)



### Replacement of the schuko plug

Remove the two screws in the socket holder to remove the plug (Fig.1.27), paying attention to the wiring when making the replacement.

(Fig. 1.27)



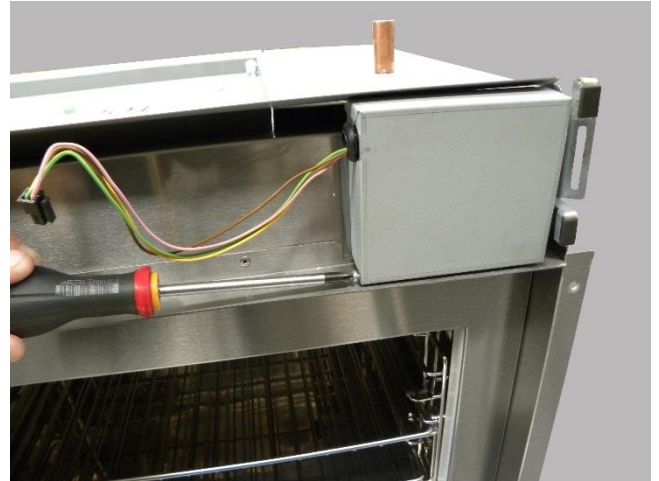
## Replacement of the fuse

Remove the dashboard by unplugging the display cable (Fig. 1.28). Then remove the protection plate of the power board by unscrewing the two side screws (Fig. 1.29). Extract the fuse, paying attention not to damage the components next to it (Fig. 1.30), and insert the fuse in its location with the finger (Fig. 1.31)

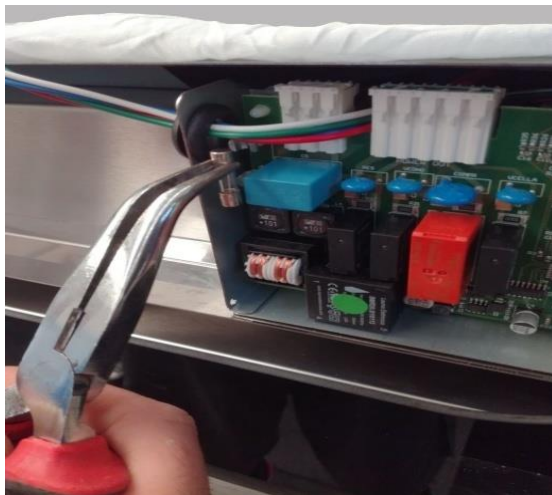
(Fig. 1.28)



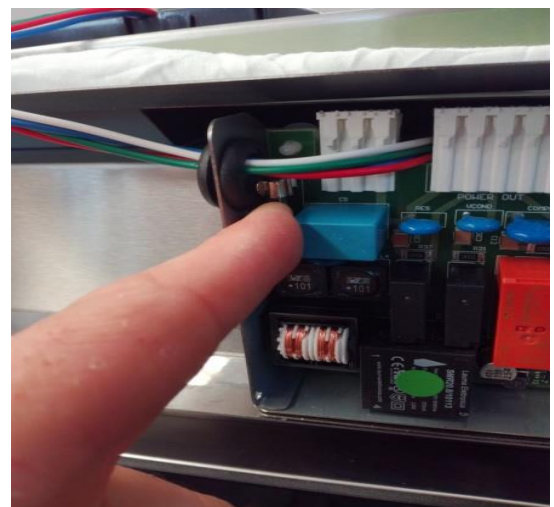
(Fig. 1.29)



(Fig. 1.30)



(Fig. 1.31)



## Replacement of the leds

Remove the cell roof and the internal fan support (Fig.1.32), then remove the led shown in the figure and replace it (Fig.1.33).

(Fig. 1.32)



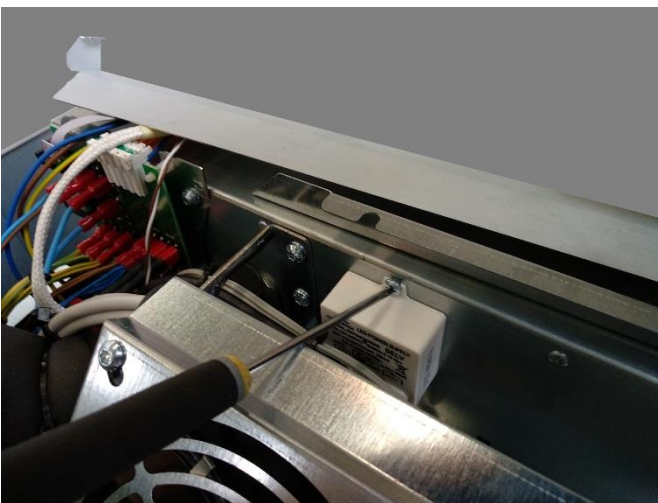
(Fig. 1.33)



## Replacement of the tranformer for leds

Remove the back of the machine and unscrew the transformer (Fig.1.34). Then remove the cables and replace.

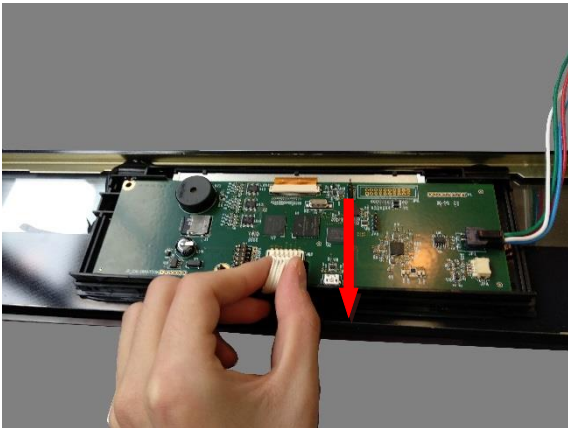
(Fig. 1.34)



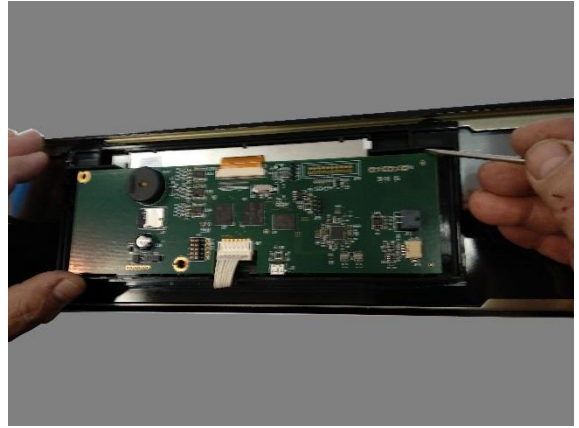
## Replacement of rotary

Remove the dashboard by unscrewing the two screws on the back, to remove the wiring display remove the black cover, then disconnect the cable (Fig.1.35). After that remove the white rotary cable from the control board. Lift up the control board and its support by removing it from its location using a screwdriver (Fig.1.36) (Fig.1.37). Finally remove the plastic as shown in the picture (Fig.1.38).

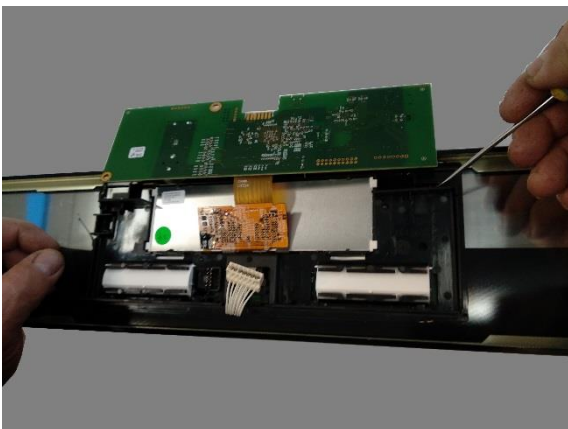
(Fig. 1.35)



(Fig. 1.36)



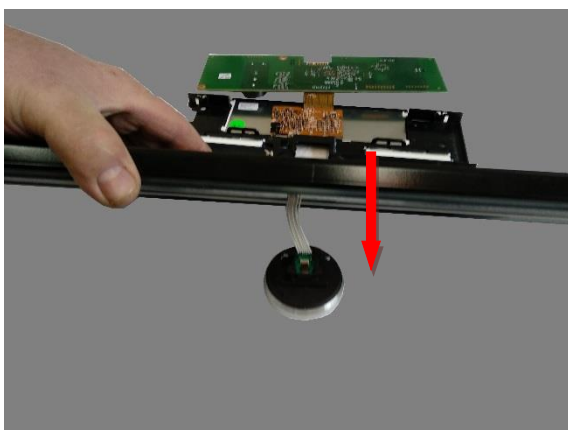
(Fig. 1.37)



(Fig. 1.38)



(Fig. 1.39)



# Problem solving

<b>Problem</b>	<b>Possible cause</b>	<b>Solution</b>
The appliance does not start up.	No power	Check the electrical connection.
Ice in the cavity.	Excessive use of the appliance.	De-ice the appliance leaving the door open.
		Switch off the machine at the end of the cycle.
Excessive formation of water at the base of the cavity.	Intensive use of the appliance and subsequent de-icing.	Use the sponge provided to dry the cavity.
The message "Please close door to continue program" appears on the display.	The door is not closed properly.	Check that the supporting surface of the gasket is clean.
		Remove any ice on the frame of the door/gasket.
The touch screen does not respond to the commands.	The display is dirty.	Clean the display and switch the machine off and on again.
The food does not reach the required temperature	Incorrect setting of the chilling cycle.	Check the program and the distribution of food in the cavity.
	Food is not arranged properly on the trays.	Check for any obstruction in the distribution of air.
	Food is excessively thick.	Reduce the thickness of the food.
	There is a cover or lid.	Remove the cover or lid.
The temperature indicated by the food sensor is incorrect.	Incorrect insertion of the food sensor.	Check the position of the food sensor in the product.
	The food sensor is damaged.	Use only timed or assisted programs and contact the Service Centre to request a replacement.
The appliance prompts the user to insert the food sensor when it is in fact already inserted.	Broken food sensor.	Contact the technical Service Centre.