



# Electrolux

## SERVICE MANUAL COOKING

### RANGE HOOD BETA



EN

Publication number  
599 818 562

Edition: 05/2018 - Rev. 00

FOR INTERNAL AND PARTNERS USE ONLY

© ELECTROLUX HOME PRODUCTS

Consumer Service - EMEA

Quality & Continuous Improvement - Technical Support

# CONTENTS

<b>CONTENTS</b>	<b>1</b>
<b>1 PURPOSE OF THIS MANUAL</b>	<b>2</b>
<b>2 SAFETY</b>	<b>ERROR! BOOKMARK NOT DEFINED.</b>
<b>3 BETA RANGE HOOD</b>	<b>4</b>
<b>4 ACCESSIBILITY</b>	<b>5</b>
<b>5 CIRCUIT</b>	<b>15</b>
<b>6 TROUBLE SHOOTING</b>	<b>18</b>

# 1 PURPOSE OF THIS MANUAL

The purpose of this Service Manual (SM) is to provide Service Engineers who are already familiar with the repair procedures of Hoods

This SM will provide information on:

- Hood Range
- Accessesbility
- Technical and functional characteristics
- Trouble shooter

## Document Revisions

Rev.	Date	Description	Author
00	05/2018	Document creation	<a href="#">Said Hatem</a>

## Acronyms and Abbreviations

Terms	Initialism
Grease Filter Assembly	<a href="#">GFA</a>
Blower Assembly	<a href="#">BA</a>
Candle Lamp	<a href="#">CL</a>
Spot Lamp	<a href="#">SL</a>
Light Diffuser	<a href="#">LD</a>
Feeder Cable	<a href="#">FC</a>
Control Assembly	<a href="#">CA</a>
Led Driver	<a href="#">LD*</a>
Carbon Filter Holder	<a href="#">CFH</a>

## 2 SAFETY

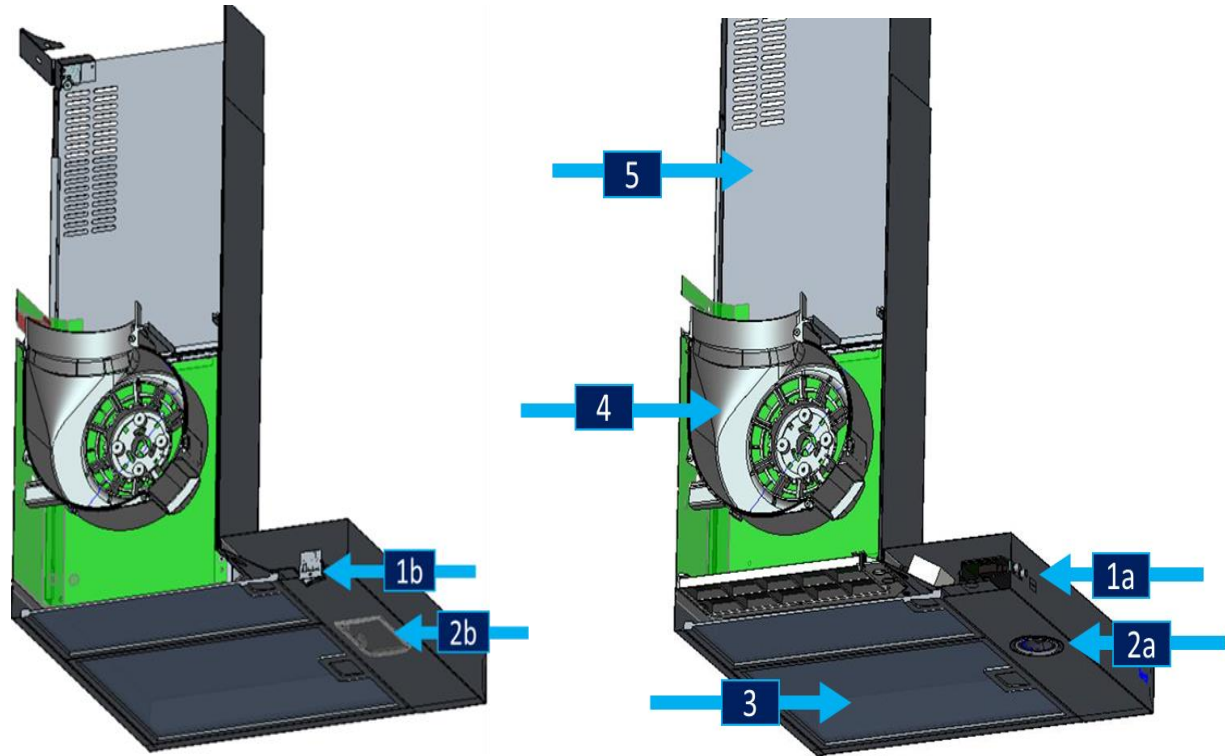


- All the work to be performed inside the appliance requires specific skills and knowledge and may only be carried out by qualified and authorised Service Engineers
- Before you access internal components, take the plug out of the socket to disconnect the power supply.
- Some of the components in the mechanical part could cause injuries, so wear suitable protection and proceed with caution.
- Prior to touching the light bulbs ensure they are cooled down.

### 3 BETA RANGE HOOD

#### 3.1 Hood Features

Variant 1	
1b	Control Assembly Rocker Button
2b	Light Diffuser & Candle Lamp
Variant 2	
1a	Control Assembly Push Button
2a	Spot Lamp
3	Grease Filter
4	Blower Assembly
5	Ducts



## 4 ACCESSIBILITY

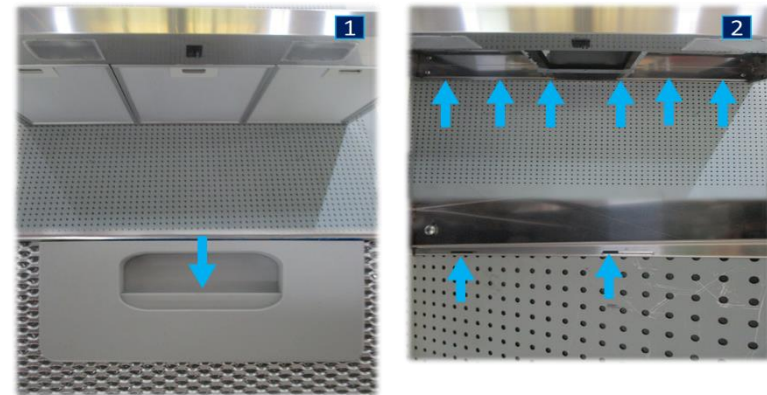
### 4.1 Grease Filter Assembly (GFA)

1. Slide the latch in the handle structure backwards to unsnap Grease Filter.
2. Release the Grease Filter from the slots in the left side of its frame.

Perform the same steps to remove the other filters.

Placing back the Grease Filter: Start with the step 2 placing the guide projections in the

guide and snap the handle latch

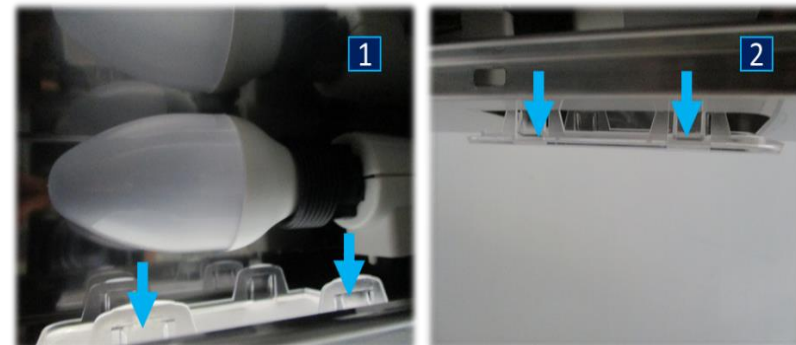


### 4.2 Light Diffuser (LD)

Perform chapter [4.1](#)

! Have work gloves to avoid the cuts when you unsnap

1. Unsnap two from the four snaps of the light diffuser inside the hood.
2. Push the light diffuser down to remove it.



## 4.3 Lamp

4.3	Lamp	Picture	Procedure to access
4.3.1	<b>Candle Lamp</b>		See subchapter <a href="#">4.3.1</a>
4.3.2	<b>Spot Lamp</b>		See subchapter <a href="#">4.3.2</a>

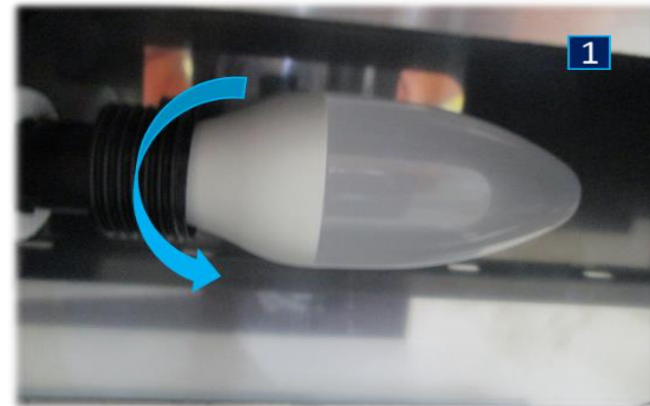
### 4.3.1 Candle Lamp (CL)

Perform chapter [4.2](#)

! Unplug the power cable from the power socket

! Prior to touching the light bulbs ensure they are cooled down

1. Turn the bulb in anti- clockwise direction to take it out and in clockwise direction to place it back.

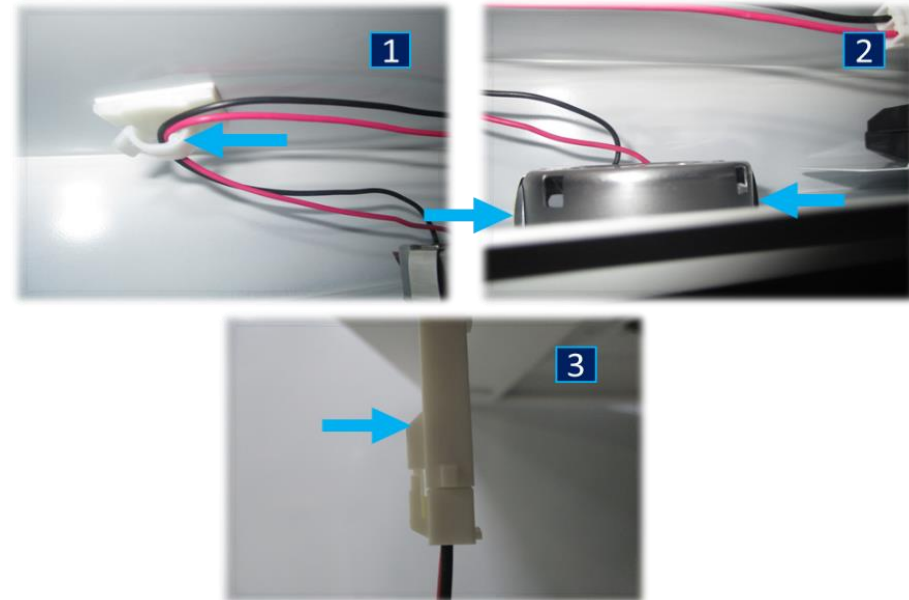


### 4.3.2 Spot Lamp (SL)

Perform chapter [4.1](#)

! Have work gloves to avoid the cuts when you unsnap

1. Remove the cables from the hooks.
2. Unsnap the lamps.
3. Unsnap the connectors.

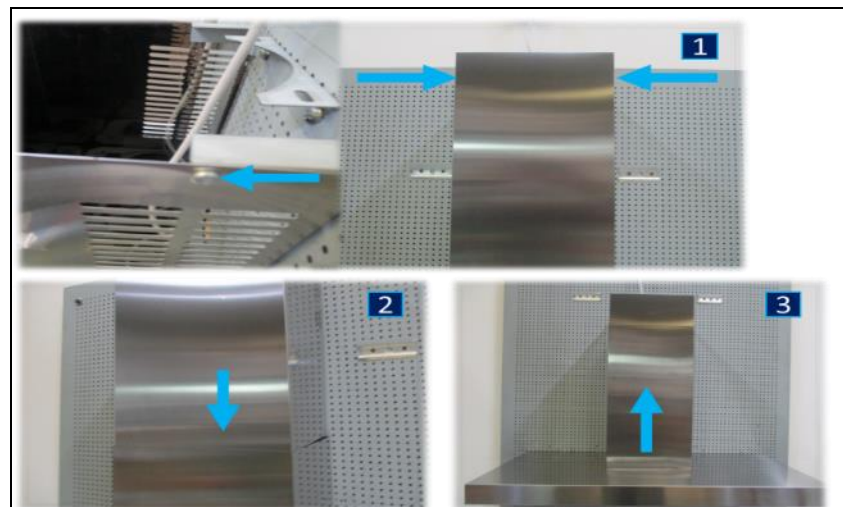




## 4.4 Ducts

! Have work gloves to avoid the cuts.

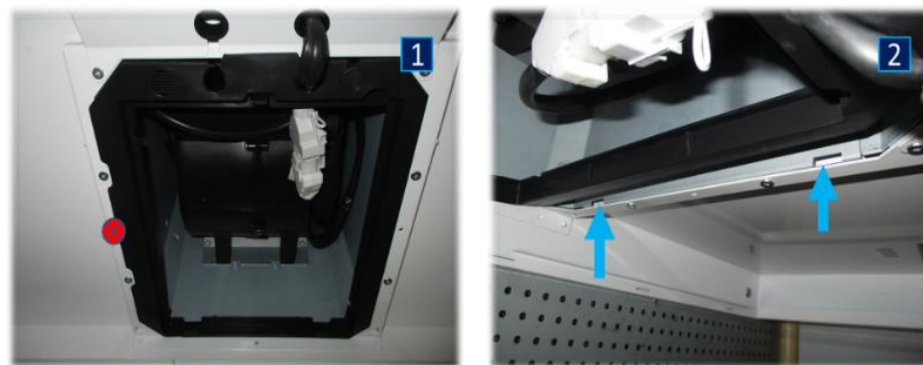
1. Unfasten the 2\* screws which secure the ducts to the wall bracket.
2. Slide down the upper duct into the below one.
3. Lift both and take the duct out



## 4.5 Carbon Filter Holder (CFH)

Perform chapter [4.1](#)

1. Unfasten the 1\* screw which secure the CFH to the hood shell.
2. Pull down towards left to extract from the lateral slots.



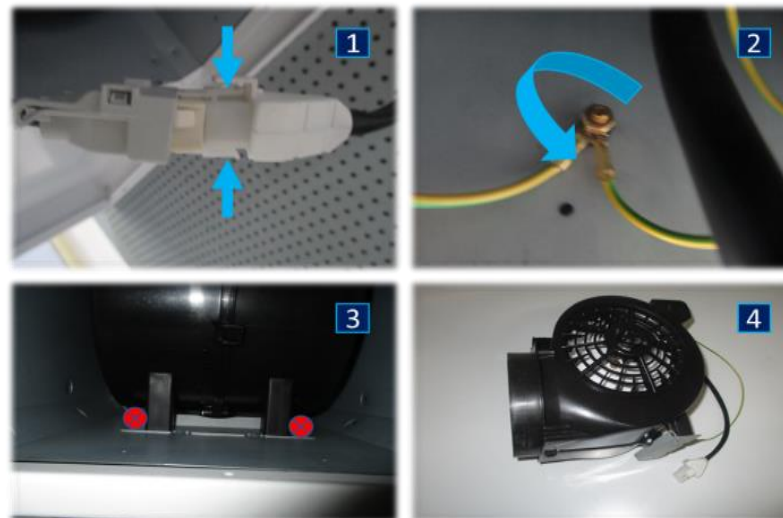
## 4.6 Blower Assembly (BA)

Perform chapter [4.1](#) and chapter [4.5](#)

! Unplug the power cable from the power socket



! Be sure to hold up the BA during the perform of the 3rd step of this chapter

1. Depress the two snaps on the power connector inward and pull to separate out.
2. Turn the nut anti clockwise direction to remove the ground cable and clockwise direction to place it.
3. Unfasten the two screws which secure the BA to the hood shell.
4. Pull down the BA.



	BETA EA 340 S1 BA MOTOR POWER(W)	BETA EA 340 S1 PU MOTOR POWER(W)	BETA EB 25 MOTOR POWER(W)
<b>MAX Speed</b>	115	100	205
<b>2<sup>nd</sup> Speed</b>	–	70	170
<b>MIN Speed</b>	65	60	125
<b>Label</b>	<div style="border: 1px solid black; border-radius: 10px; padding: 5px;">                     BEST S.p.A.                      Code : 06002213                      220-240V~ 50Hz 135W                      THERMALLY PROTECTED                      GG/M/A.                 </div>	<div style="border: 1px solid black; border-radius: 10px; padding: 5px;">                     BEST S.p.A.                      Code : 06002213                      220-240V~ 50Hz 135W                      THERMALLY PROTECTED                      GG/M/A.                 </div>	<div style="border: 1px solid black; border-radius: 10px; padding: 5px;">                     BEST S.p.A.                      Code : 06002303 CL.F                      220-240V~50Hz 210W 5µF CW                      THERMALLY PROTECTED GG/M/A                 </div>

## 4.7 Control Assembly (CA)

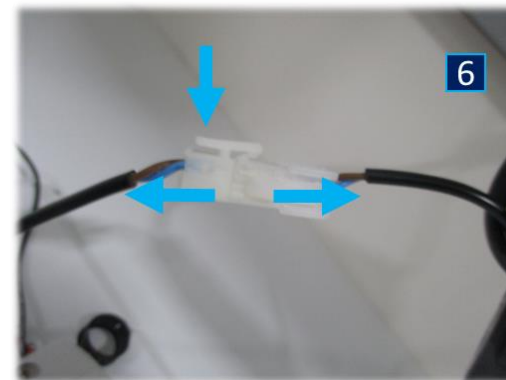
4.7	Control Assembly	Picture	Procedure to access
4.7.1	Push Button		See subchapter <a href="#">4.7.1</a>
4.7.2	Rocker Button		See subchapter <a href="#">4.7.2</a>

#### 4.7.1 Control Assembly Push Button (CAPB)

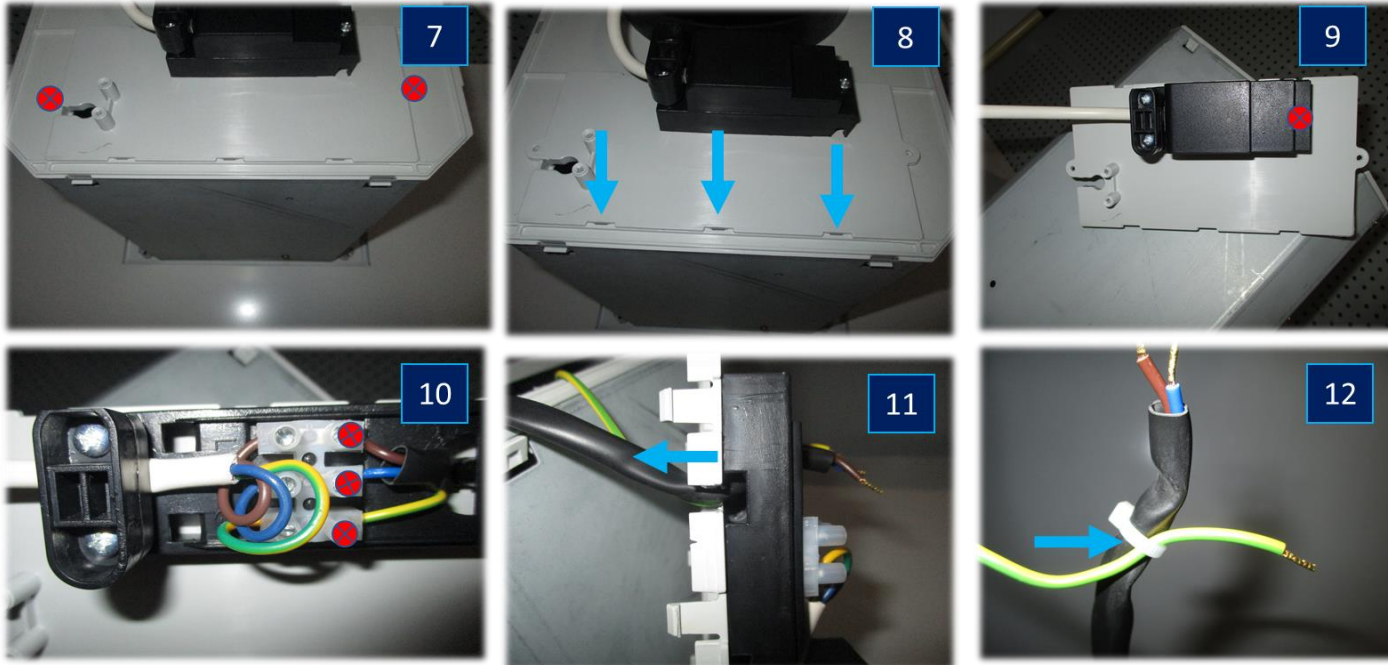
Perform chapter [4.1](#) , chapter [4.5](#) , the [3<sup>rd</sup>](#) step of subchapter [4.3.2](#) and the [1<sup>st</sup>](#) step of chapter [4.6](#)

**!** Unplug the power cable from the power socket

1. Unfasten 4\* screws which secure the holder of CA.
2. Pull backward and extract down.
3. Unfasten 2\* screws which secure the CA to the holder.
4. Unsnap the cable guide to release the cables.
5. Unsnap to open the connector box.
6. Unsnap to separate.



7. Unfasten 2\* screws which secure the holder of the power connection box.
8. Unsnap to remove the power connection box holder.
9. Unfasten 1\* screw to remove the cover of the power connection box.
10. Loosen 3\* screws which secure the cables.
11. Pull the cables out.
12. Cut the cables latch.





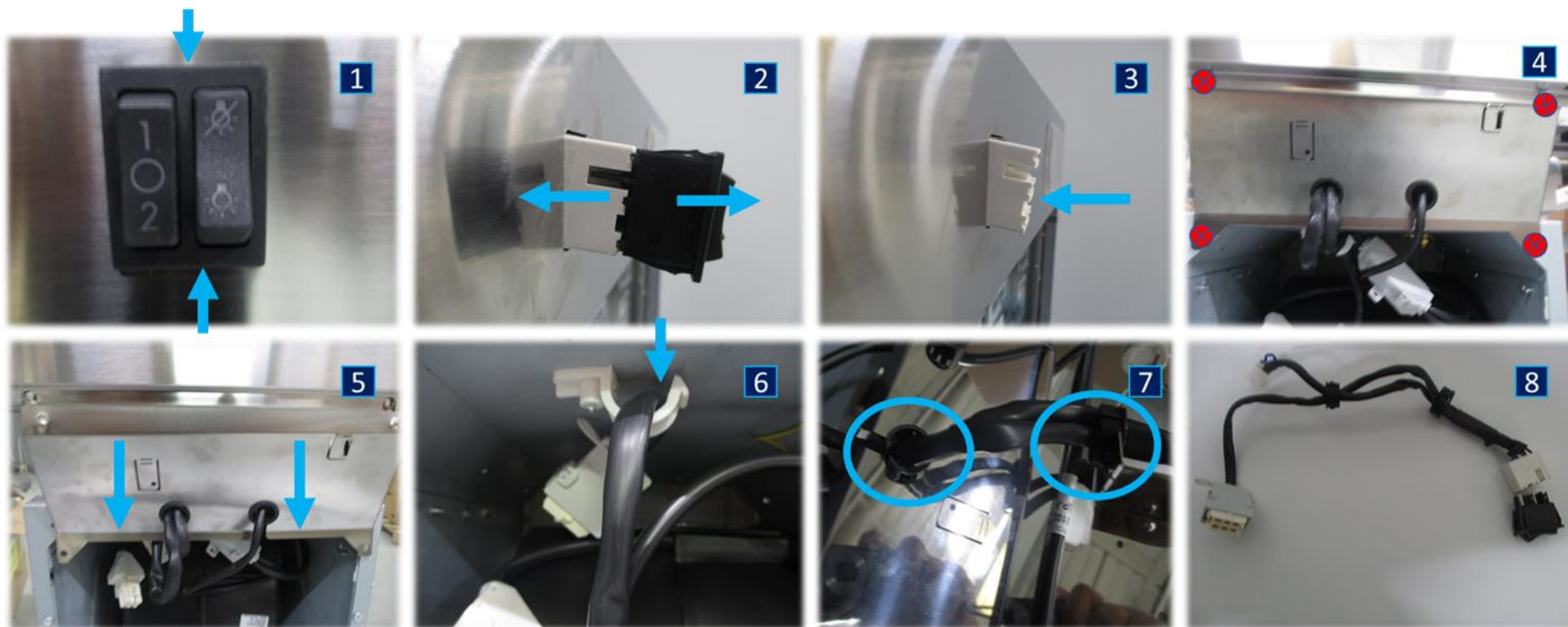
## 4.7.2 Control Assembly Rocker Button (CARB)

Perform chapter [4.1](#) and chapter [4.5](#)

1. Unsnap the Rocker Button Holder.
2. Pull out in opposite directions to separate.
3. Push the socket inside.

Perform [1<sup>st</sup>](#) step of chapter [4.6](#) and [5<sup>th</sup>](#),[6<sup>th</sup>](#) steps of subchapter [4.7.1](#)

4. Unfasten 4\* screws which secure the holder of the CA.
5. Pull down the CA.
6. Unsnap from the cable latch.
7. Unsnap from the cable guides.
8. Extract the CARB.

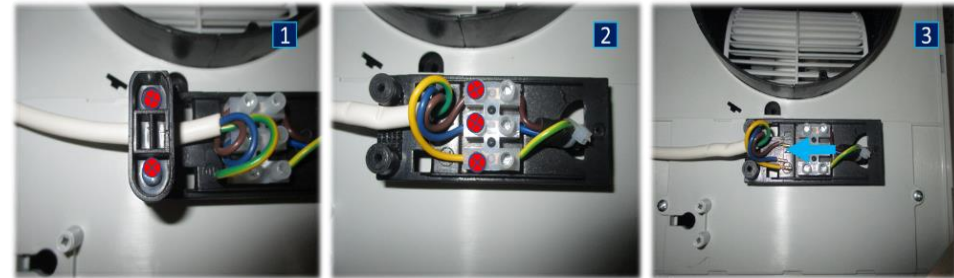


## 4.8 Feeder Cable

Perform chapter [4.4](#) and the [9<sup>th</sup>](#) step of subchapter [4.7.1](#)

! Unplug the power cable from the power socket

1. Unfasten 2\* screws which secure the FC Lock to remove.
2. Loosen 3\* screws which secure the FC to the connector.
3. Pull out the FC.







## 4.9 Led Driver (LD\*)

Perform chapter [4.1](#) ,chapter [4.5](#) , ( [1<sup>st</sup>](#) , [2<sup>nd</sup>](#) , [5<sup>th</sup>](#) , [6<sup>th</sup>](#) ) steps of subchapter [4.7.1](#)

1. Unfasten 1\* screw which secure the LD to the CA holder.
2. Pull leftward to extract.

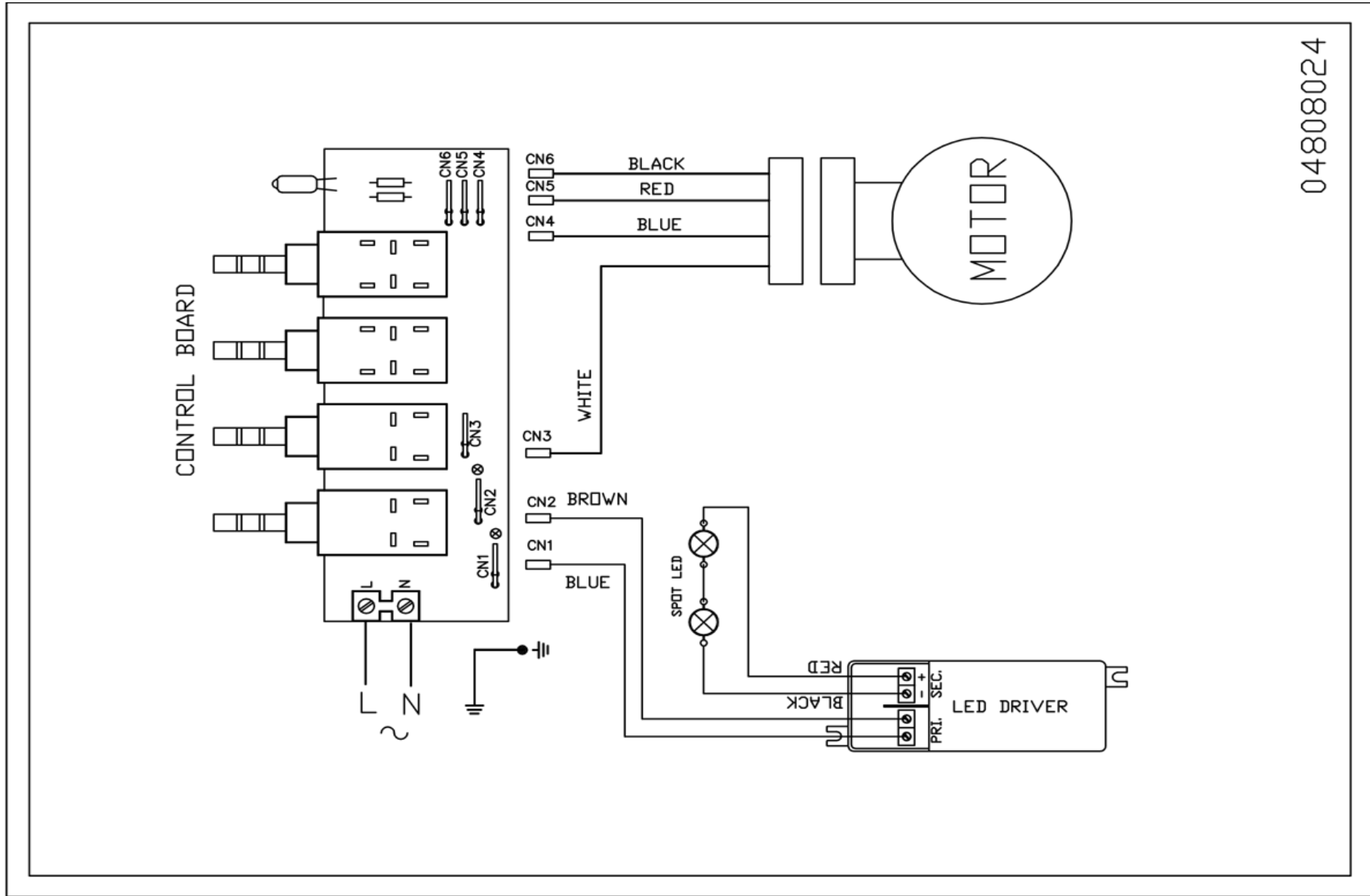


## 5 CIRCUIT

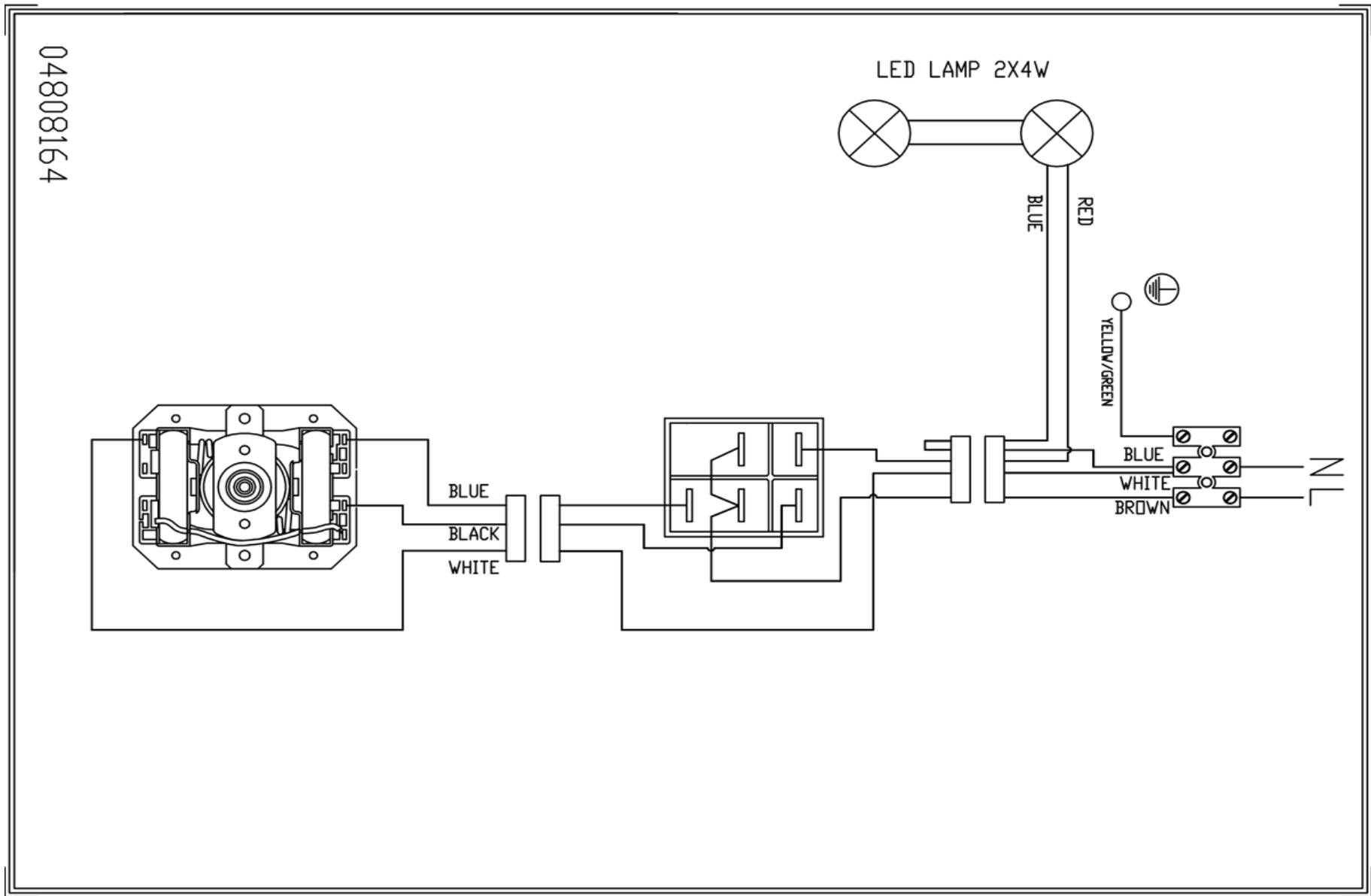
5	Circuit Code Number	Circuit Links	Combinations
5.1	<b>04808024</b>  Push button + Spot Lamp	<a href="#">5.1</a>	 
5.2	<b>04808164</b>  Rocker Button + Candle Lamp	<a href="#">5.2</a>	 



## 5.1 Circuit of Push button + Spot Lamp

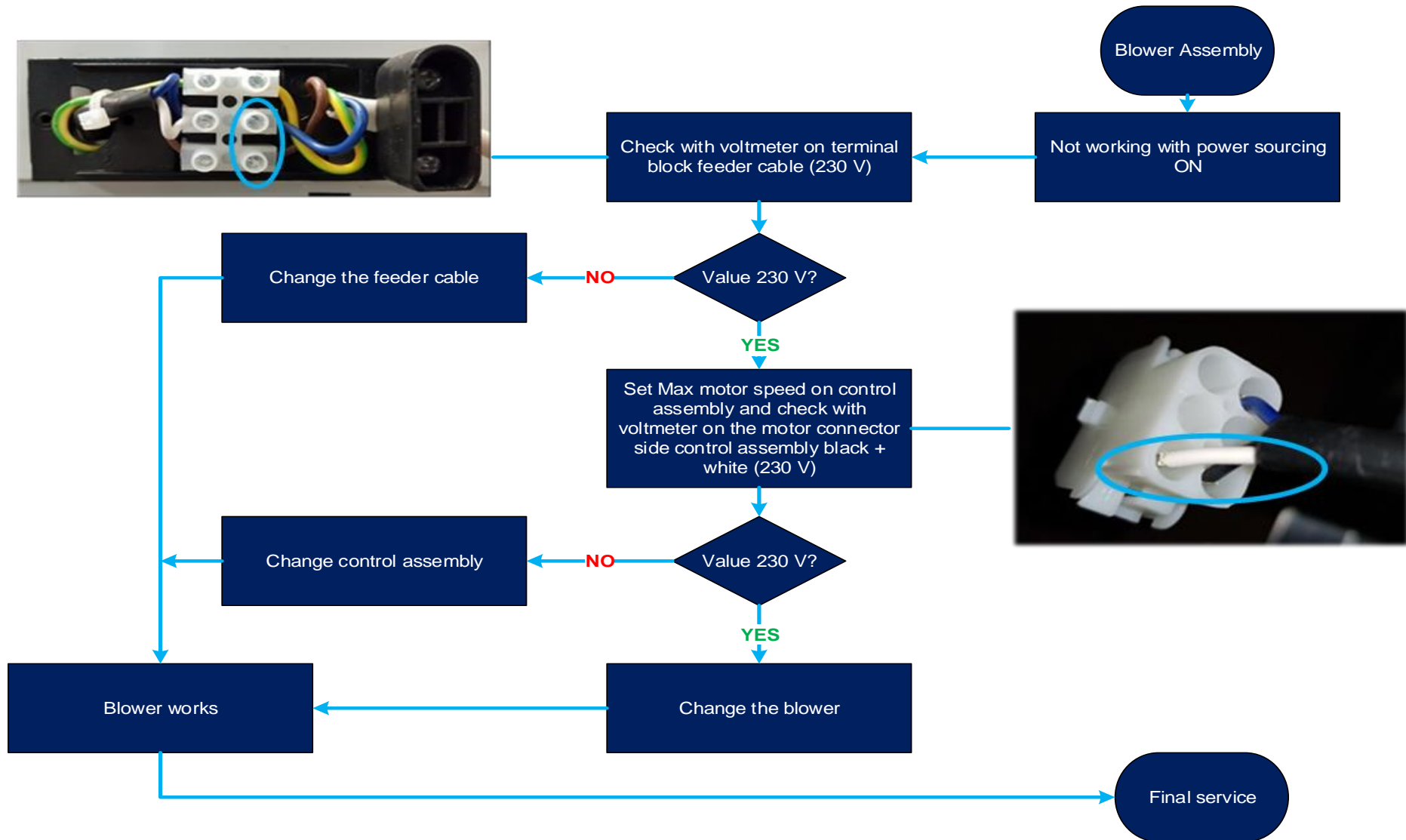


5.2 Circuit of Rocker button + Candle Lamp

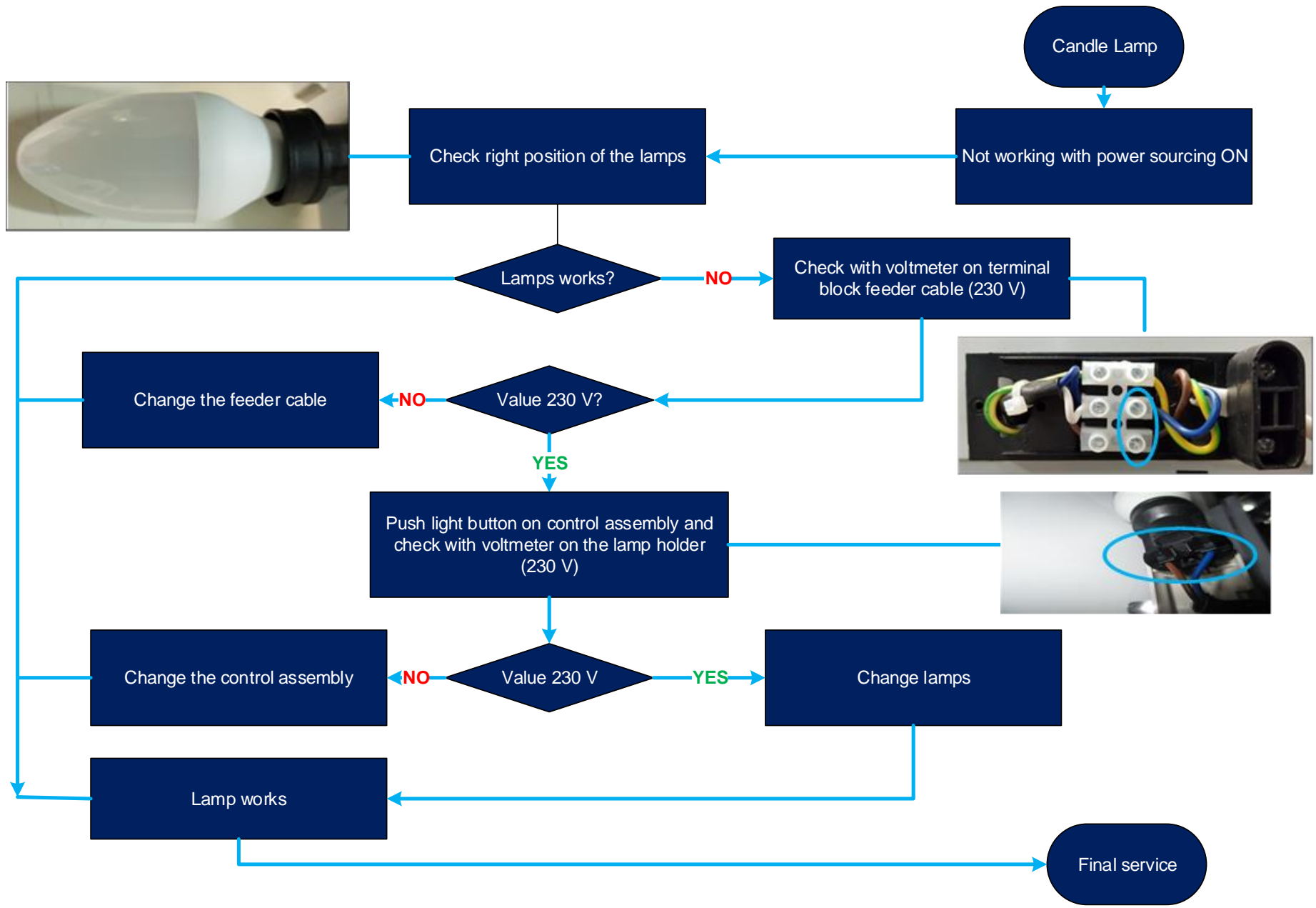


## 6 TROUBLE SHOOTING

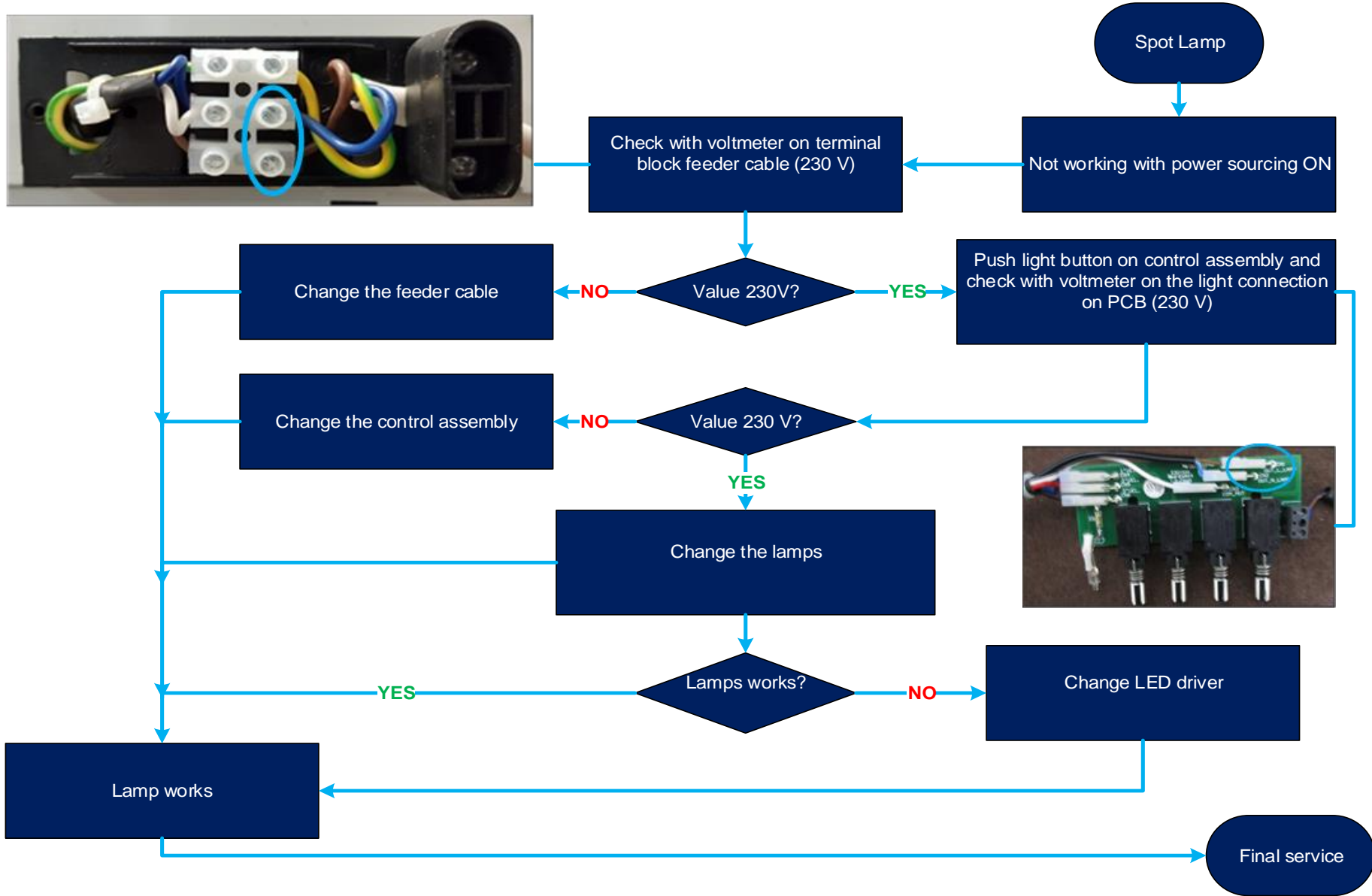
### 6.1 Blower Assembly



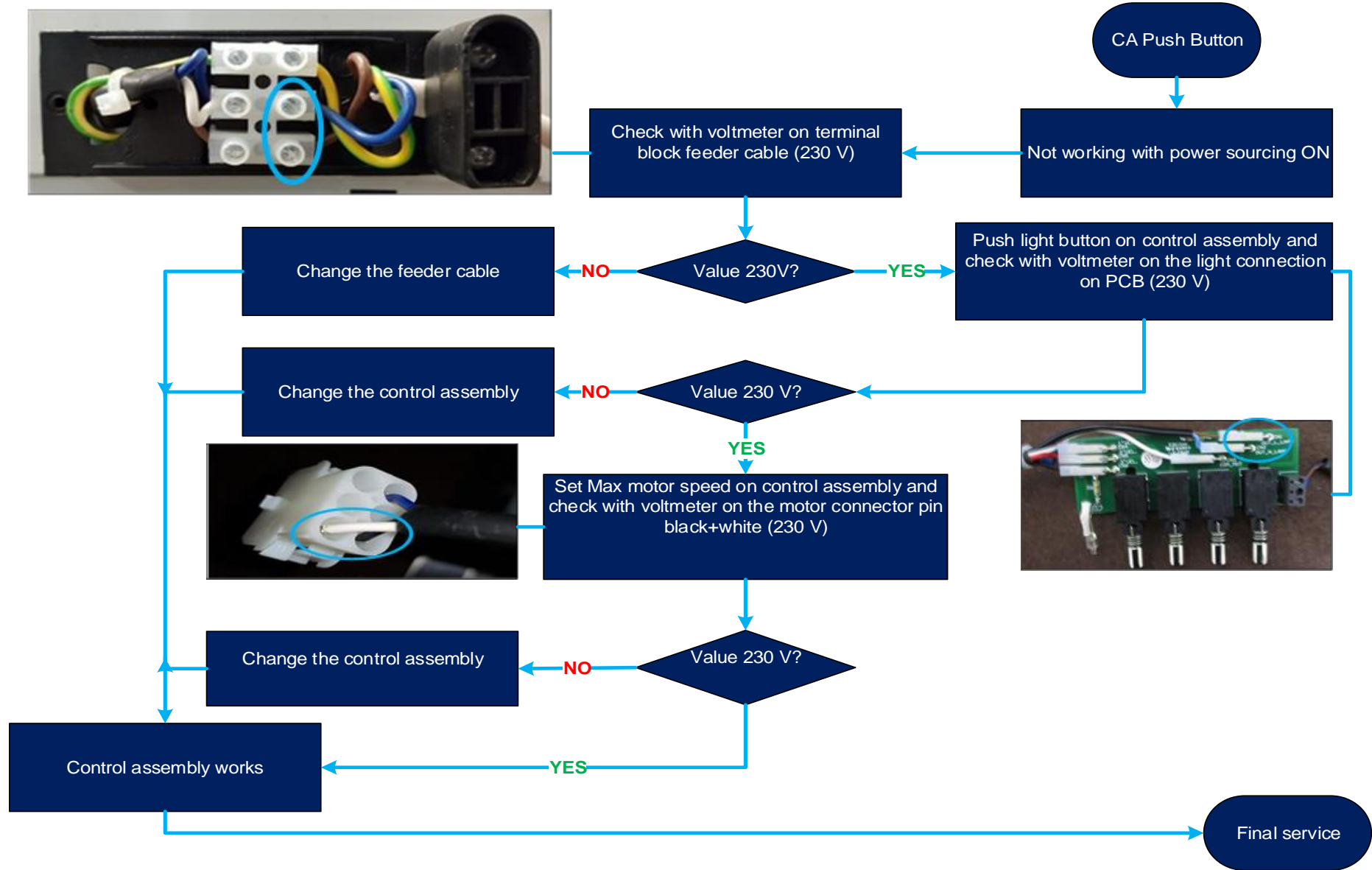
## 6.2 Candle Lamp



### 6.3 Spot Lamp



## 6.4 Control Assembly Push Button



## 6.5 Control Assembly Rocker Button

