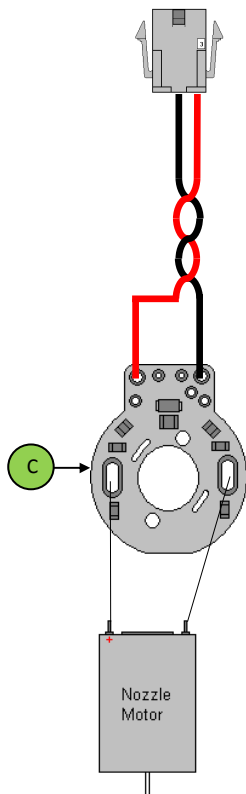
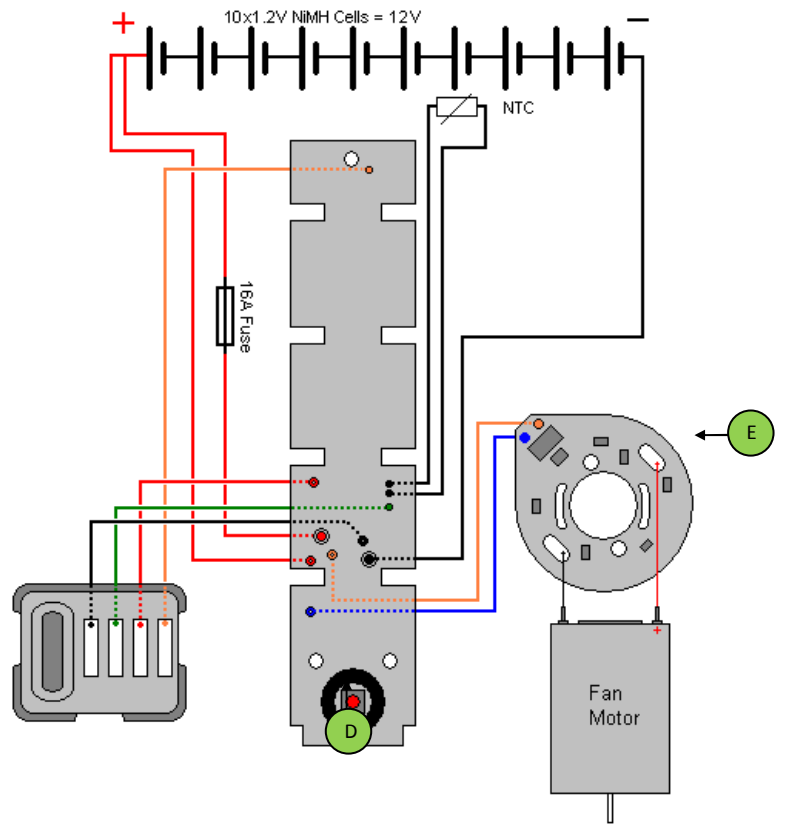
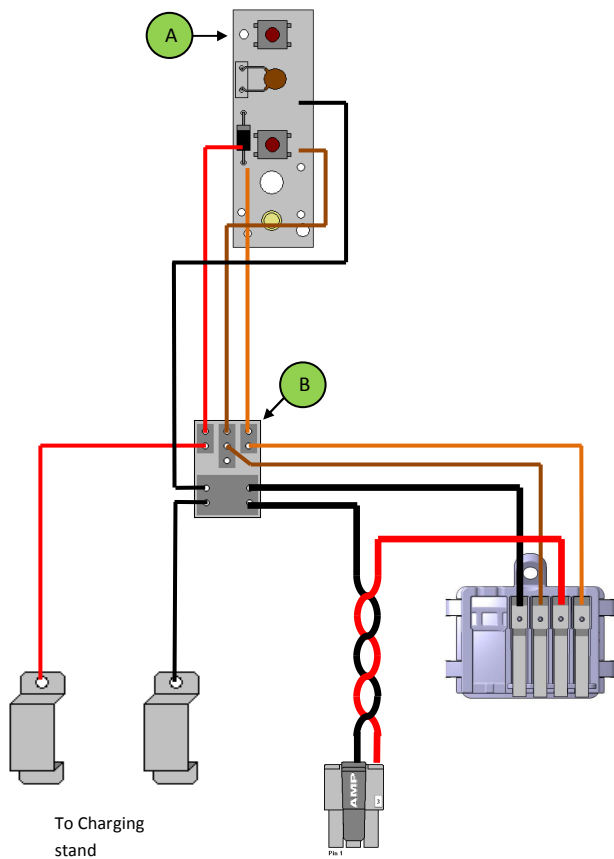
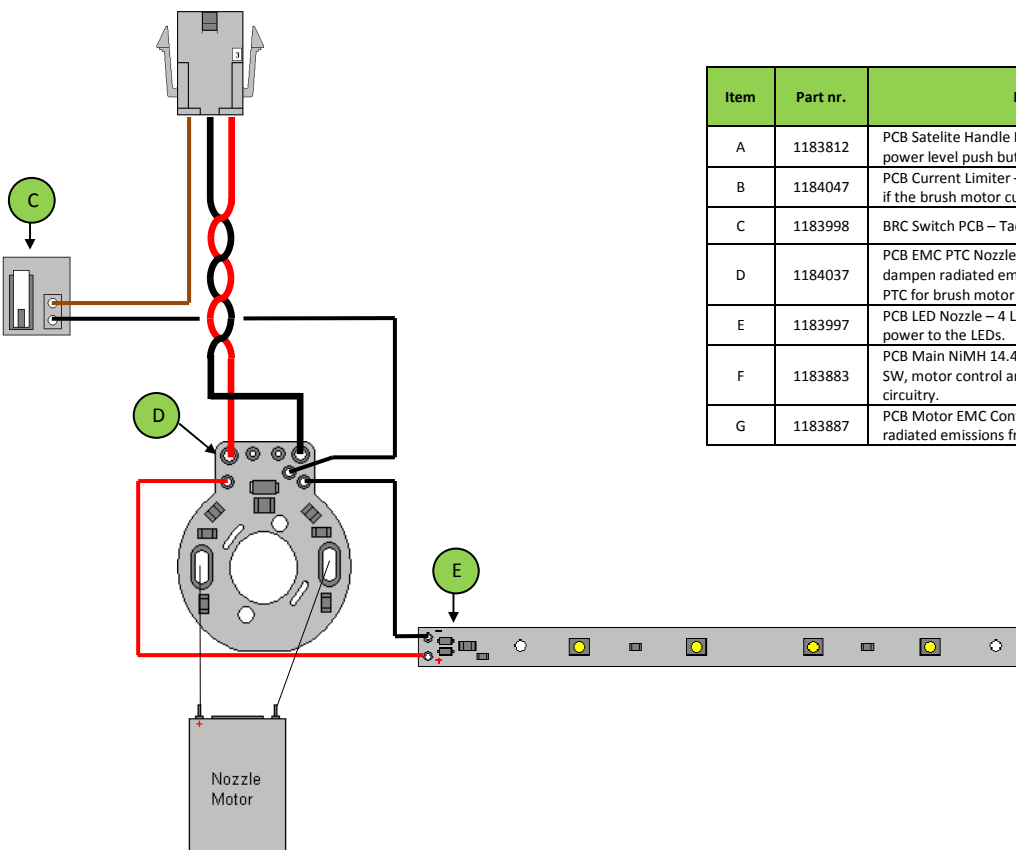
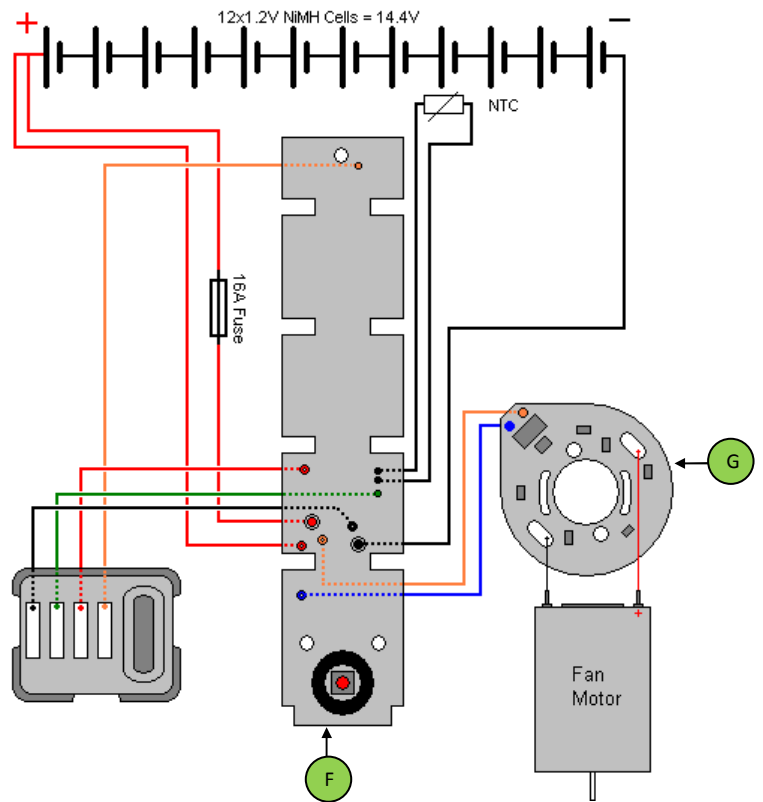
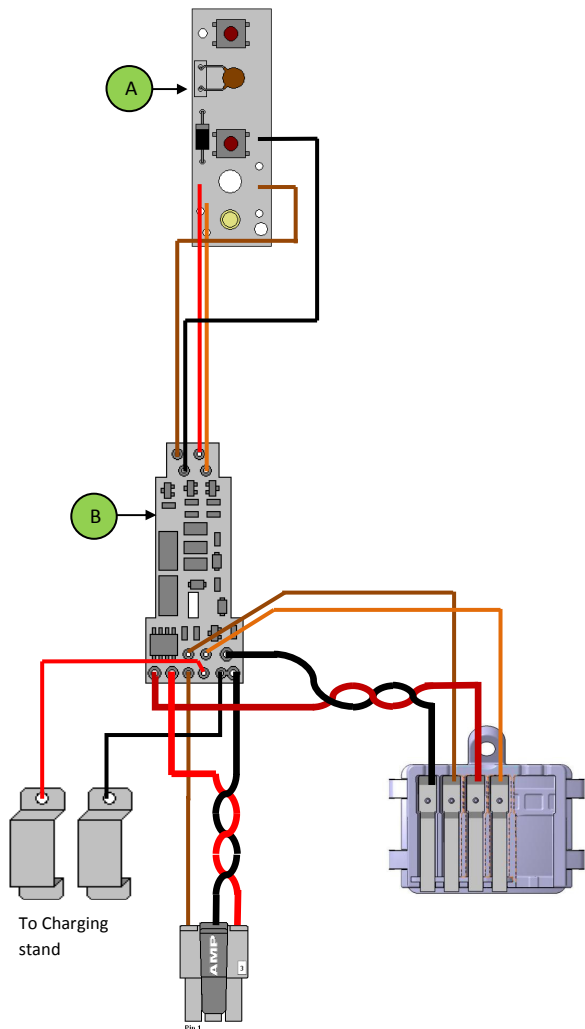


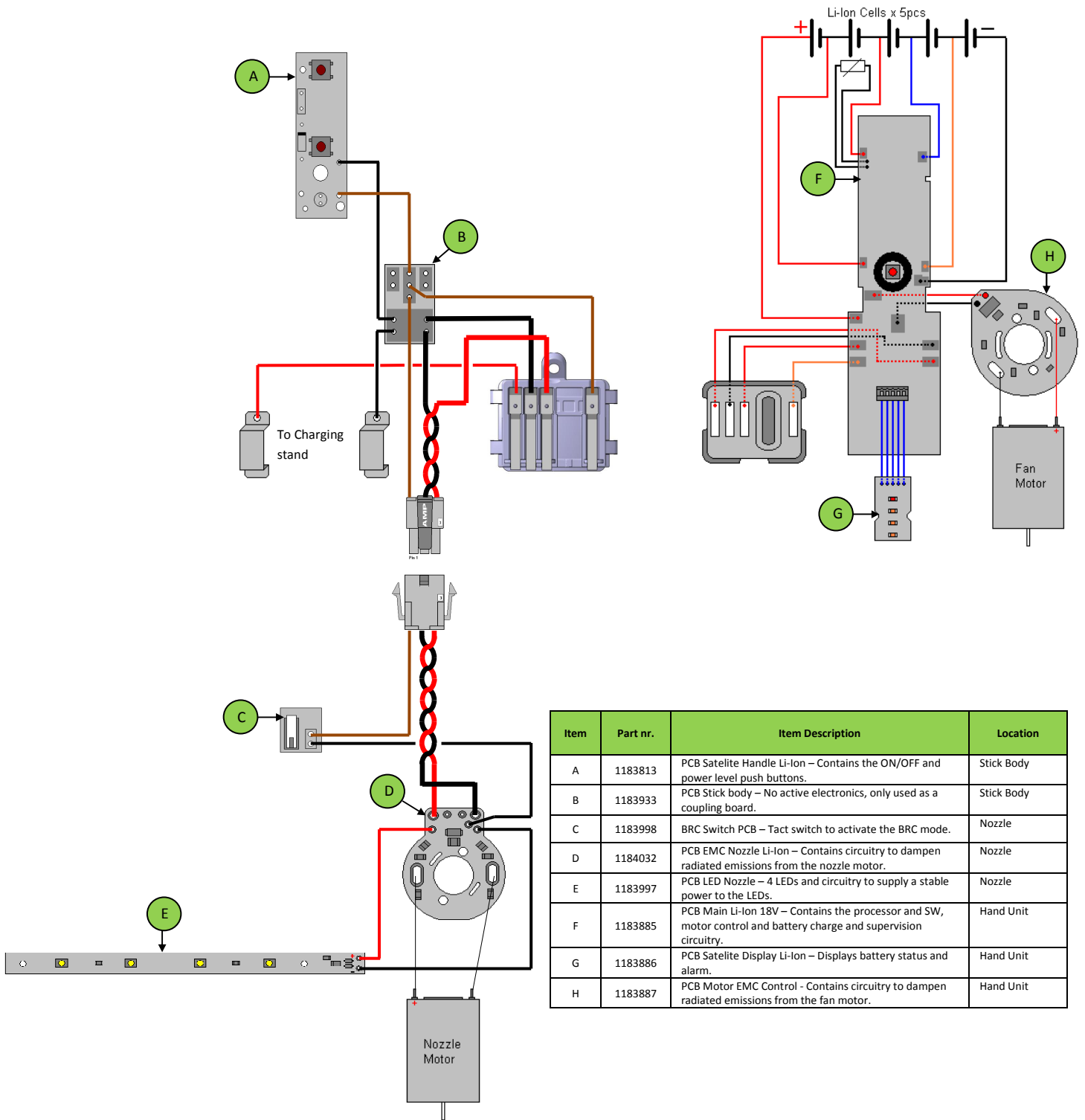
Item	Part nr.	Item Description	Location
A	1183812	PCB Satellite Handle NiMH – Contains the ON/OFF and power level push buttons and charging LED.	Stick Body
B	1184047	PCB Current Limiter – Turns OFF the power to the nozzle if the brush motor current during BRC mode is too high.	Stick Body
C	1183998	BRC Switch PCB – Tact switch to activate the BRC mode.	Nozzle
D	1184037	PCB EMC PTC Nozzle NiMH BRC – Contains circuitry to dampen radiated emissions from the nozzle motor and a PTC for brush motor current.	Nozzle
E	1183997	PCB LED Nozzle – 4 LEDs and circuitry to supply a stable power to the LEDs.	Nozzle
F	1183882	PCB Main NiMH 12V BRC – Contains the processor and SW, motor control and battery charge and supervision circuitry.	Hand Unit
G	1183887	PCB Motor EMC Control - Contains circuitry to dampen radiated emissions from the fan motor.	Hand Unit



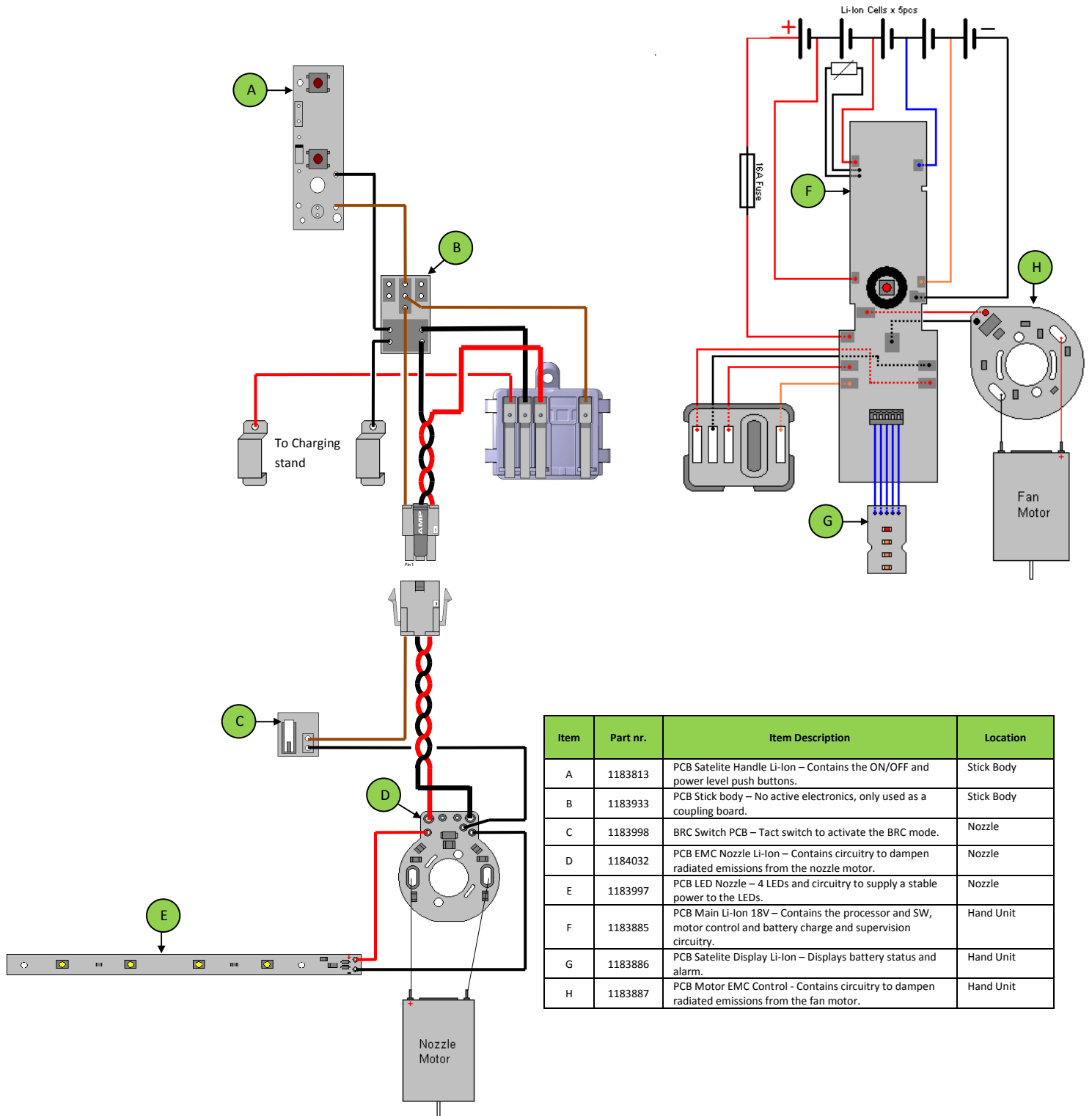
Item	Part nr.	Item Description	Location
A	1183812	PCB Satelite Handle NiMH – Contains the ON/OFF and power level push buttons and charging LED.	Stick Body
B	1183933	PCB Stick body – No active electronics, only used as a coupling board.	Stick Body
C	1184033	PCB EMC PTC Nozzle NiMH – Contains circuitry to dampen radiated emissions from the nozzle motor and a PTC for brush motor current.	Nozzle
D	1184036	PCB Main NiMH 12V without BRC – Contains the processor and SW, motor control and battery charge and supervision circuitry.	Hand Unit
E	1183887	PCB Motor EMC Control - Contains circuitry to dampen radiated emissions from the fan motor.	Hand Unit



Item	Part nr.	Item Description	Location
A	1183812	PCB Satellite Handle NiMH – Contains the ON/OFF and power level push buttons and charging LED.	Stick Body
B	1184047	PCB Current Limiter – Turns OFF the power to the nozzle if the brush motor current during BRC mode is too high.	Stick Body
C	1183998	BRC Switch PCB – Tact switch to activate the BRC mode.	Nozzle
D	1184037	PCB EMC PTC Nozzle NiMH BRC– Contains circuitry to dampen radiated emissions from the nozzle motor and a PTC for brush motor current.	Nozzle
E	1183997	PCB LED Nozzle – 4 LEDs and circuitry to supply a stable power to the LEDs.	Nozzle
F	1183883	PCB Main NiMH 14.4V BRC – Contains the processor and SW, motor control and battery charge and supervision circuitry.	Hand Unit
G	1183887	PCB Motor EMC Control – Contains circuitry to dampen radiated emissions from the fan motor.	Hand Unit



Item	Part nr.	Item Description	Location
A	1183813	PCB Satellite Handle Li-Ion – Contains the ON/OFF and power level push buttons.	Stick Body
B	1183933	PCB Stick body – No active electronics, only used as a coupling board.	Stick Body
C	1183998	BRC Switch PCB – Tact switch to activate the BRC mode.	Nozzle
D	1184032	PCB EMC Nozzle Li-Ion – Contains circuitry to dampen radiated emissions from the nozzle motor.	Nozzle
E	1183997	PCB LED Nozzle – 4 LEDs and circuitry to supply a stable power to the LEDs.	Nozzle
F	1183885	PCB Main Li-Ion 18V – Contains the processor and SW, motor control and battery charge and supervision circuitry.	Hand Unit
G	1183886	PCB Satellite Display Li-Ion – Displays battery status and alarm.	Hand Unit
H	1183887	PCB Motor EMC Control - Contains circuitry to dampen radiated emissions from the fan motor.	Hand Unit



Item	Part nr.	Item Description	Location
A	1183813	PCB Satellite Handle Li-Ion – Contains the ON/OFF and power level push buttons.	Stick Body
B	1183933	PCB Stick body – No active electronics, only used as a coupling board.	Stick Body
C	1183998	BRC Switch PCB – Tact switch to activate the BRC mode.	Nozzle
D	1184032	PCB EMC Nozzle Li-Ion – Contains circuitry to dampen radiated emissions from the nozzle motor.	Nozzle
E	1183997	PCB LED Nozzle – 4 LEDs and circuitry to supply a stable power to the LEDs.	Nozzle
F	1183885	PCB Main Li-Ion 18V – Contains the processor and SW, motor control and battery charge and supervision circuitry.	Hand Unit
G	1183886	PCB Satellite Display Li-Ion – Displays battery status and alarm.	Hand Unit
H	1183887	PCB Motor EMC Control - Contains circuitry to dampen radiated emissions from the fan motor.	Hand Unit