

Door reversal for CBZS LCDoD models

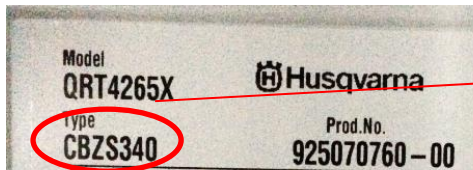
DESCRIPTION:

Door reversal process for CBZS appliances with user interface on door.

SOLUTION:

Door reversal process.

This solution modifies the appearance of the appliances.



You can find the base model of the appliance on the rating plate under 'Type'



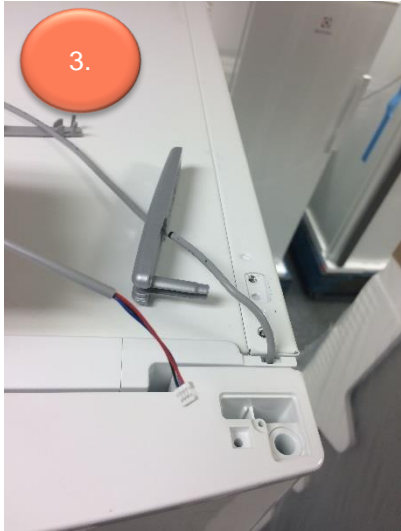


1.
 - Take out the user interface module
 - Disconnect the wires from the board

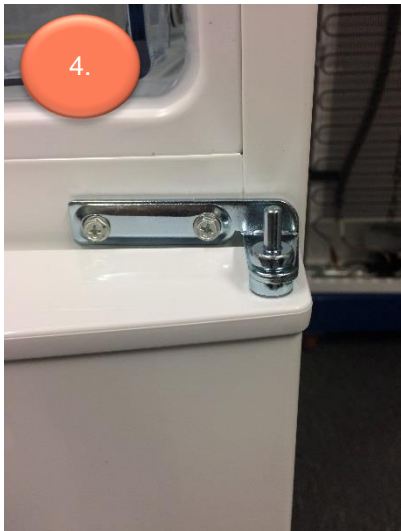
! When removing the display pay attention not to damage the surface of the appliance



2.
 - Remove the upper hinge cover.
 - Unscrew the upper door hinge.



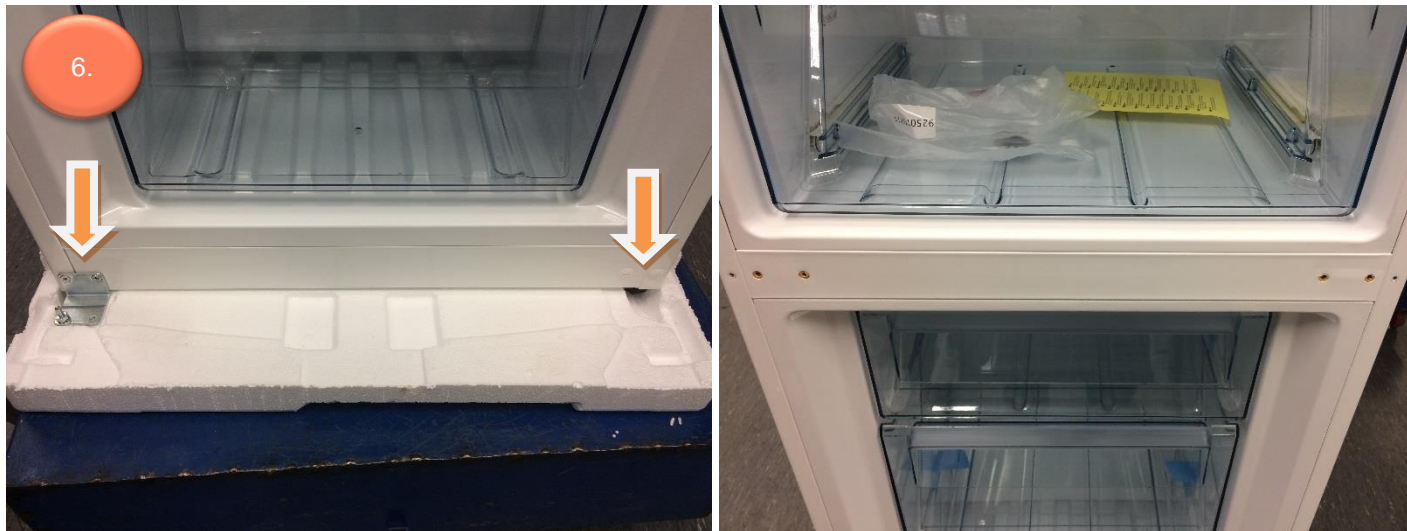
- 3.
- Pull out the user interface wire from the door channel.
 - Remove the fridge door.



- 4.
- Unscrew the middle hinge.
 - Remove the freezer door.



- 5.
- Unscrew the lower hinge.
 - Screw the lower hinge pin to the left side of the hinge.
 - Take out the hole covers.



- 6.
- Screw the lower hinge on the left side of the lower crossbeam.
 - Put the hole covers to the right side.



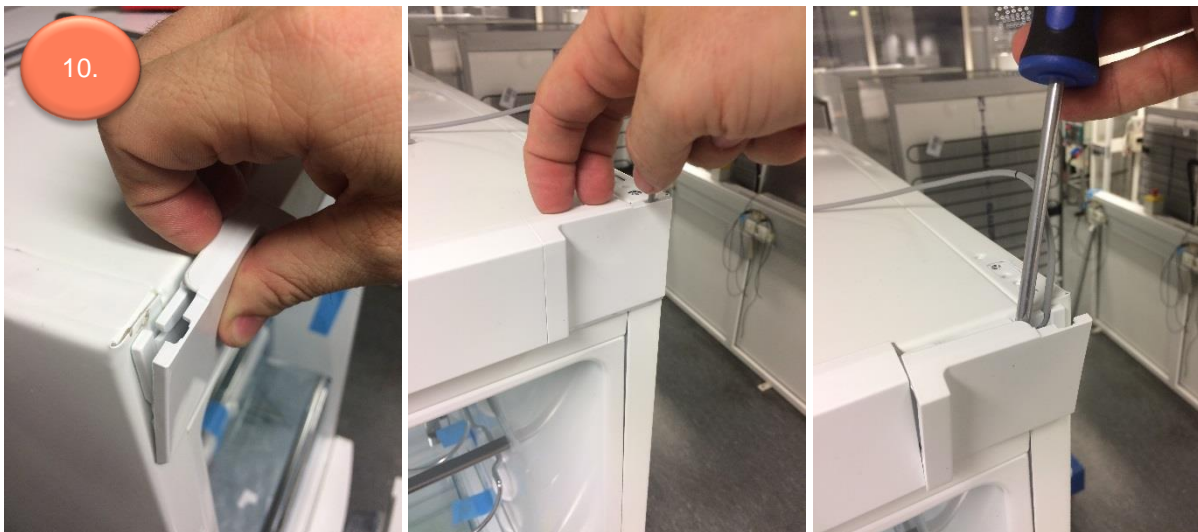
- 7.
- Place the plastic hole cover of the freezer door from the left to the right side



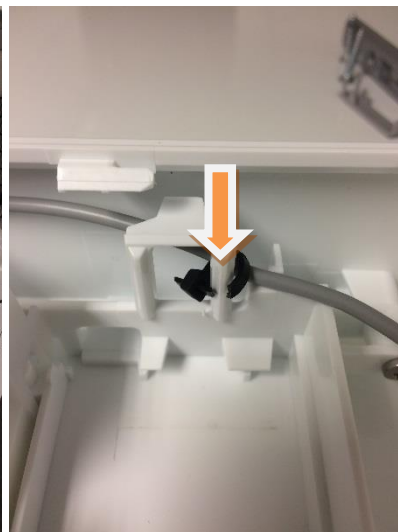
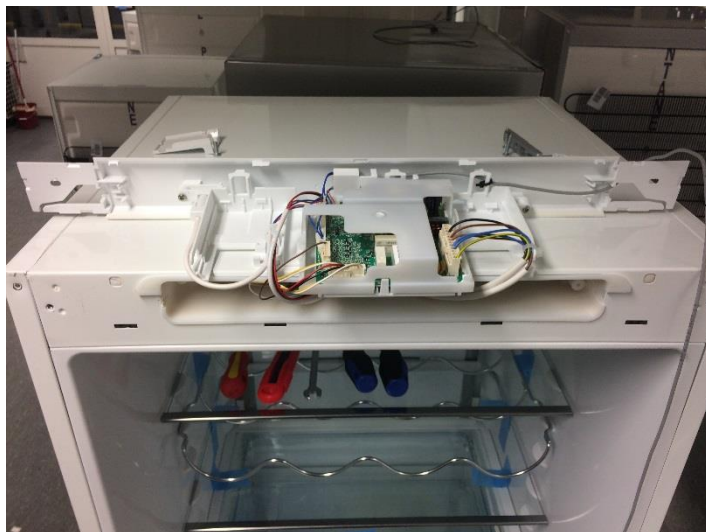
- 8.
- Place the hole cover of the middle cross beam from the left to the right side.
 - Fix the middle hinge to the left side with the two screws.



- 9.
- Take out the top hinge hole cover of the fridge door (left side).
 - Get the right side hole cover - from the bag of extra parts - and put it to the right side hole

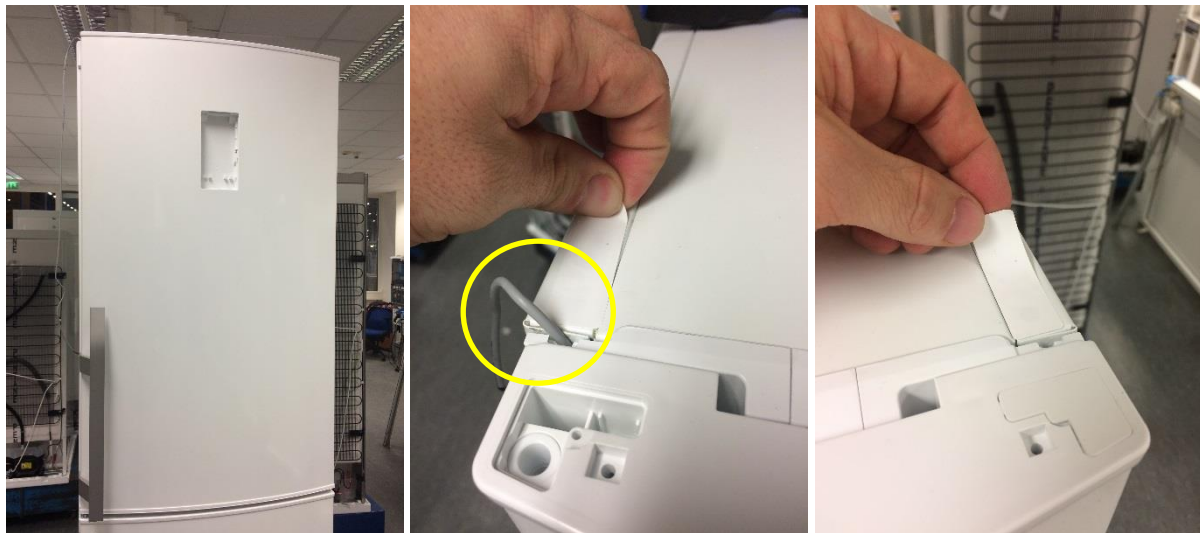


10. Take out the side covers of the control panel.



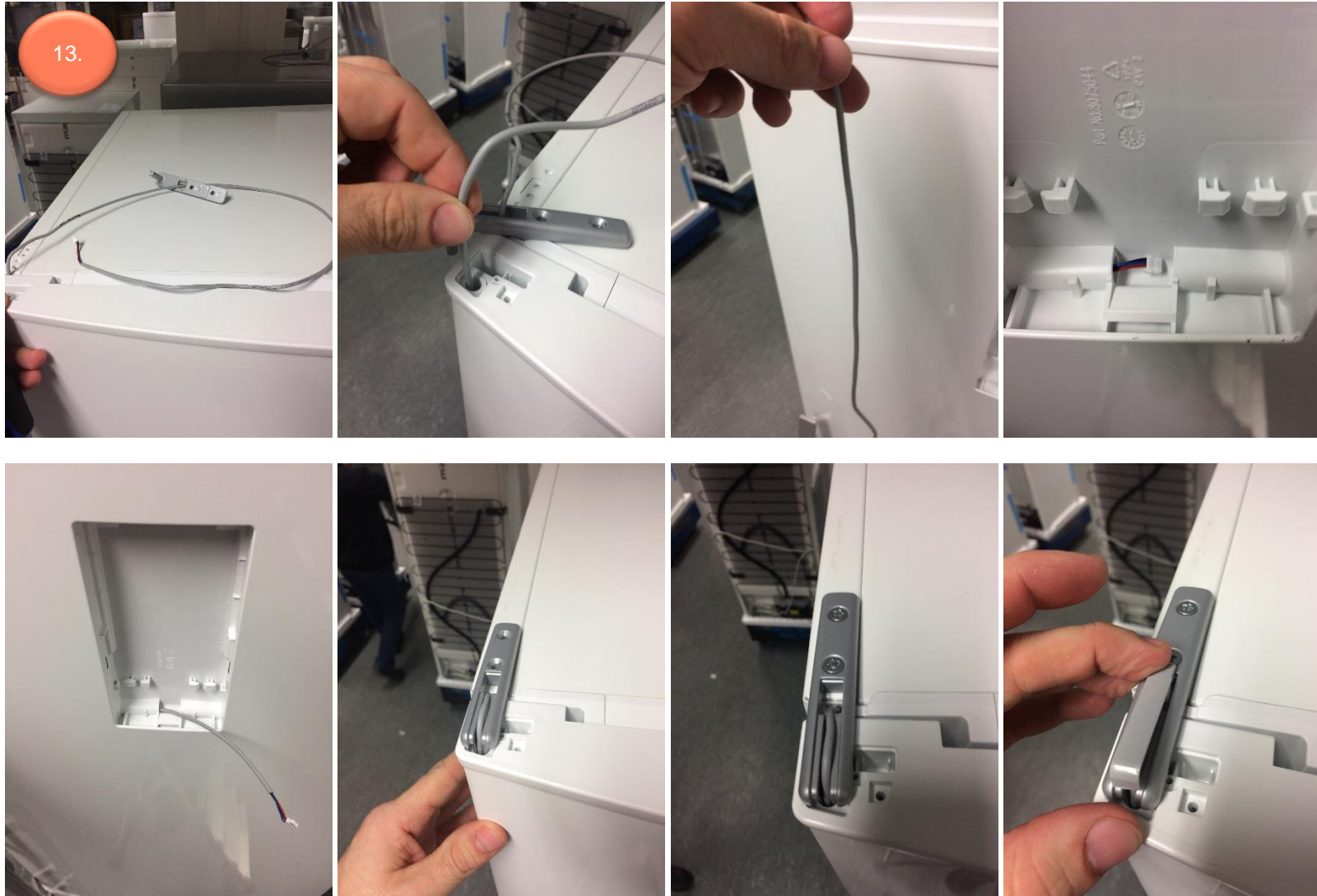
11.

- Unscrew the 2 screws of the control box holder
- Pull out the control box
- Put it to the top of the appliance.
- Cut the cable tie
- Change the layout of the cable from right to the left.



- 12.
- Slide back the control box to the right position.
 - Fix the control box with the 2 screws.
 - Put back the control panel side covers.
 - Change the side of the stickers (from left to right)

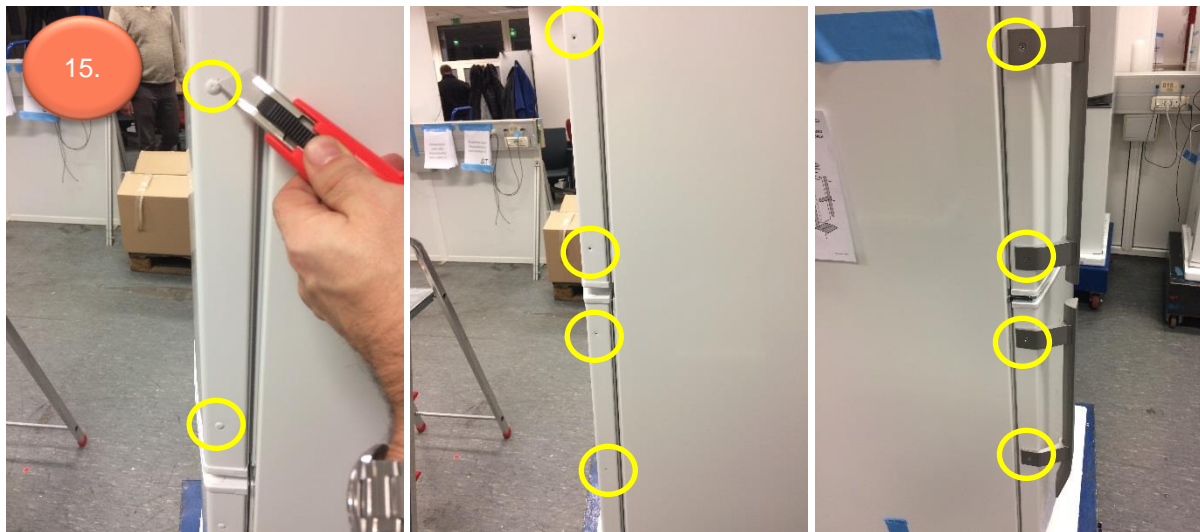
Pay attention to the layout of the cable on the top cover!



- 13.
- Insert the user interface wire into upper hinge
 - Insert the user interface wire into the wire channel of the door
 - Pull out the wire from the user interface holder
 - Screw the upper hinge.
 - Insert the upper hinge cover



- 14.
- Fix the layout of the cable in the holder
 - Connect the wire to the user interface board
 - Insert the user interface module into the holder



- 15.
- Remove plastic hole covers from the side of the doors (right side)
 - Unscrew both handles (left side)



- 16.
- Insert the plastic hole covers into the doors (left side)
 - Screw the handles to the right side
 - Check the doors and adjust if necessary

QES CODE:

During the intervention, please use codes:

Component	200, 220
Defect	

Involved PNCs:

925 070 749	EN3390MOX	EN3390MOX	CBZS340
925 070 751	RCB63326OX	RCB63326OX	CBZS340
925 070 752	0-SER	RCB63326OX	CBZS340
925 070 753	0-SER	EN3390MOX	CBZS340
925 070 755	EN3390MOW	EN3390MOW	CBZS340
925 070 757	EN3380MOX	EN3380MOX	CBZS340
925 070 758	RCB63326OW	RCB63326OW	CBZS340
925 070 763	RCB53324MX	RCB53324MX	CBZS340
925 070 764	RCB53324MW	RCB53324MW	CBZS340
925 070 765	JLFFS1832	JLFFS1832	CBZS340
925 070 766	JLFFW1831	JLFFW1831	CBZS340
925 070 774	EN3390MOX	EN3390MOX	CBZS340
925 070 775	EN3390MOW	EN3390MOW	CBZS340
925 070 900	EN3790MOX	EN3790MOX	CBZS380
925 070 902	RCB63726OX	RCB63726OX	CBZS380
925 070 903	EN3790MFX	EN3790MFX	CBZS380
925 070 904	EN3790MOW	EN3790MOW	CBZS380
925 070 905	0-SER	RCB63726OX	CBZS380
925 070 906	0-SER	EN3790MOX	CBZS380
925 070 909	EN3390MOW	EN3390MOW	CBZS340
925 070 910	RCB63726OW	RCB63726OW	CBZS380
925 070 915	RCB53724MX	RCB53724MX	CBZS380
925 070 916	RCB53724MW	RCB53724MW	CBZS380
925 070 918	JLFFS2032	JLFFS2032	CBZS380
925 070 919	JLFFW2031	JLFFW2031	CBZS380

Revision:

Revision	Date	Description	Author	Approved by - on
00	12/2017	Document Creation	Zsuzsanna Mihalik	Attila Héri