

HOOD – User Interface and Power board Communication**DESCRIPTION**

Modification of the connector of the user interface and power board managed with a creation of a kit associated.

MODELS INVOLVED

PNC	Model
942 121 825	DD 8760-MR
942 121 823	DD 8794-MR
942 121 824	DD 8760 M/S
942 121 865	HD 8795-M
942 121 862	HD 8760-M
942 121 764	DD 8794-M
942 121 760	DD 8795-M
942 121 805	DD 8795-M/CH
942 121 953	DD 8795-M/A
942 121 763	DD 8765-M
942 121 806	DD 8765-M/CH

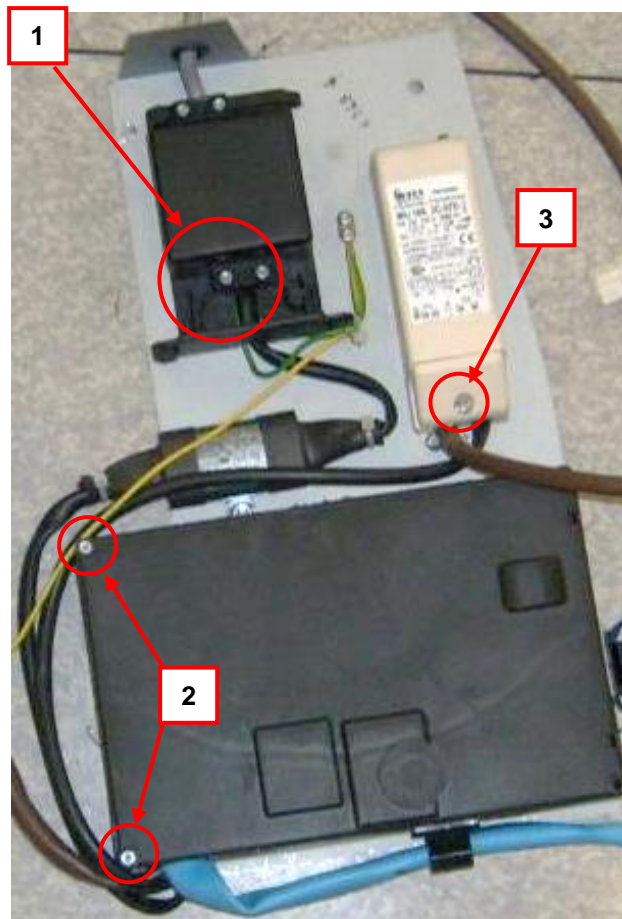
SOLUTIONS

The user interface and the power board has been changed due to technical changes, so it is not possible to change one by one old against new and a new kit was created. This kit is automatically associated to user interface and the power board codes; this means that, ordering the user interface or the power board, the kit will arrive automatically to the customer.

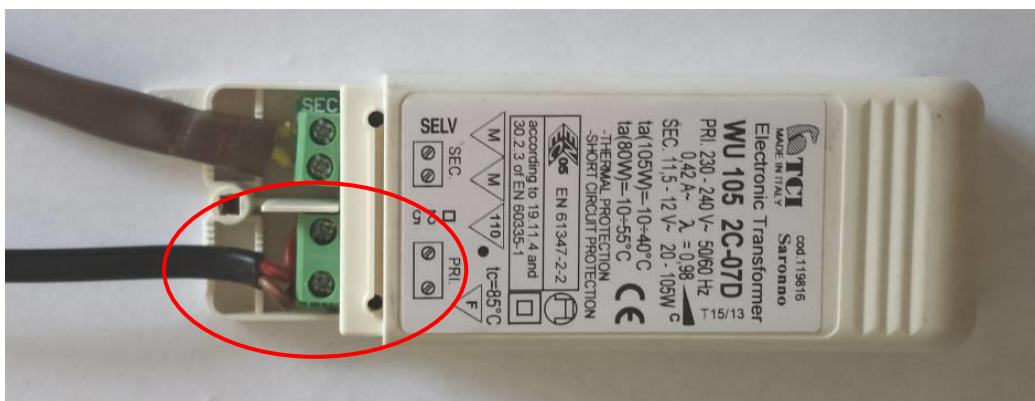
INSTRUCTIONS

To replace the user interface and the power board follow the instructions:

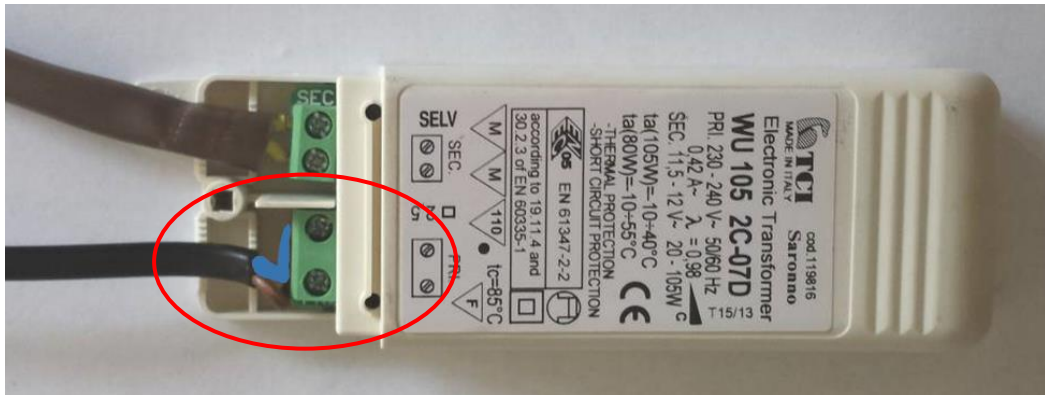
1. Remove the cover of the plastic box of the power supply
2. Remove the cover of the plastic box of the main board
3. Remove the cover of the transformer.



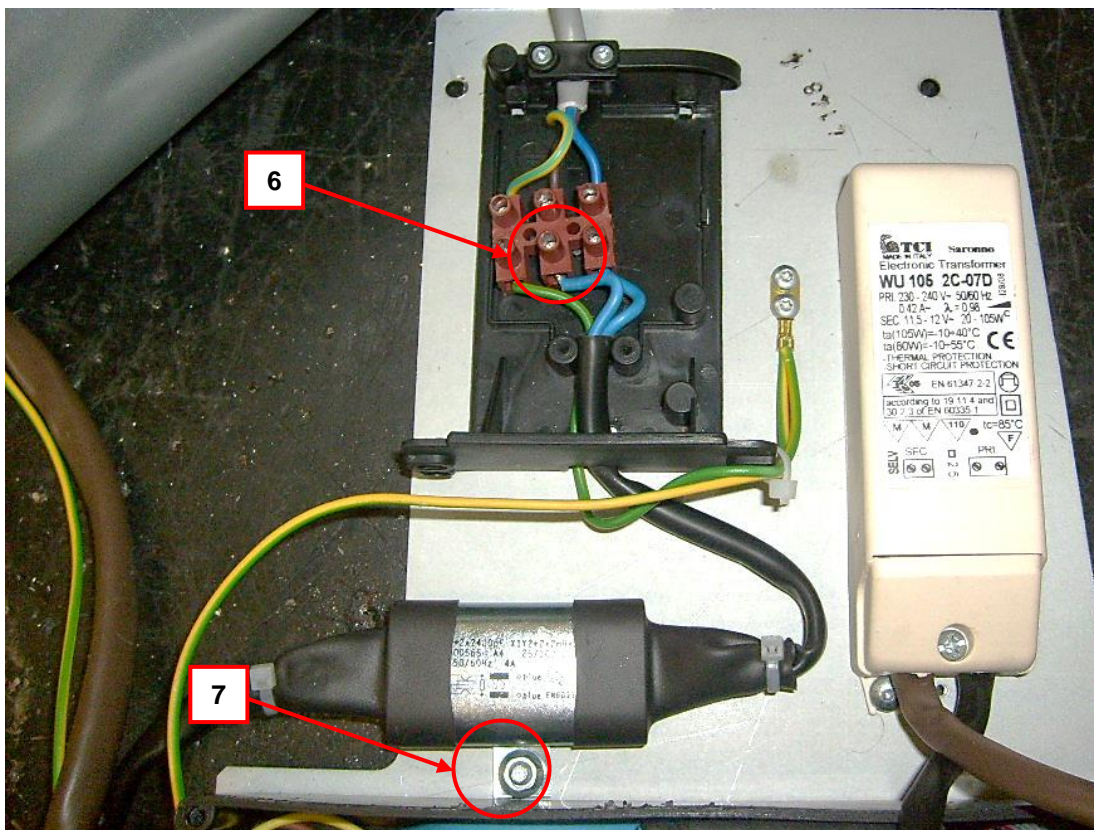
4. Remove ONLY the wire PRI



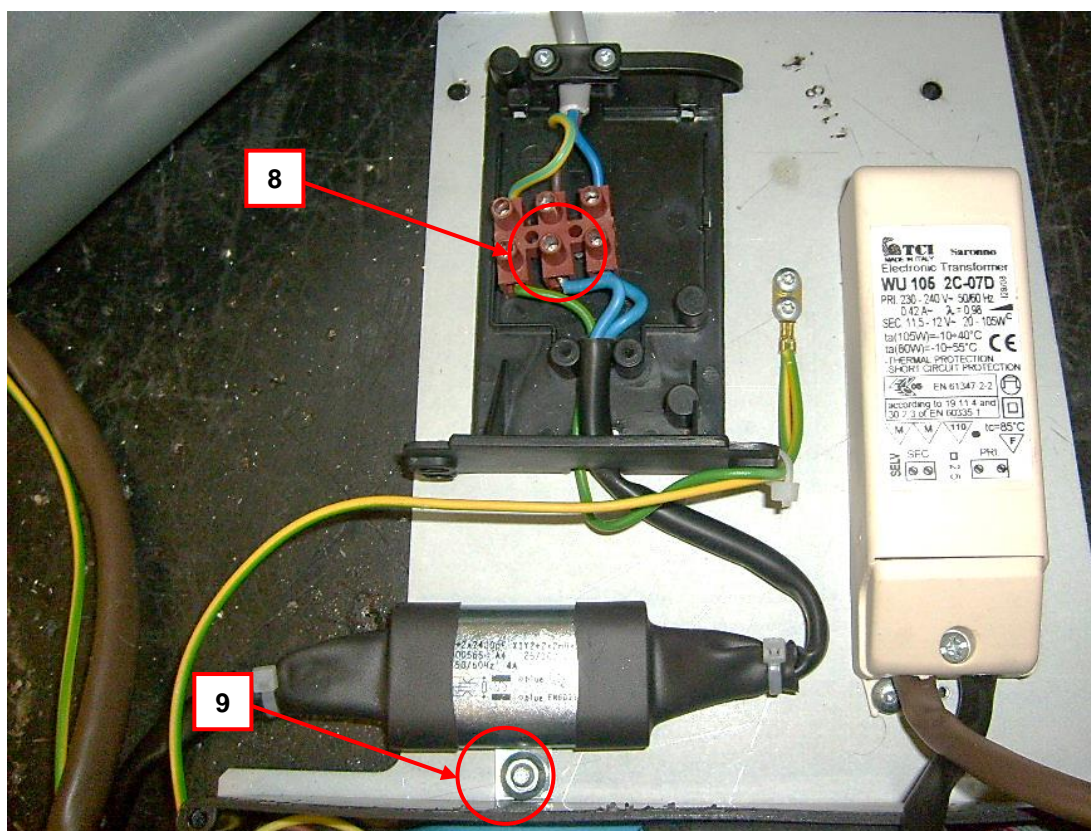
5. Connect the wire of the new main board (part of the kit)



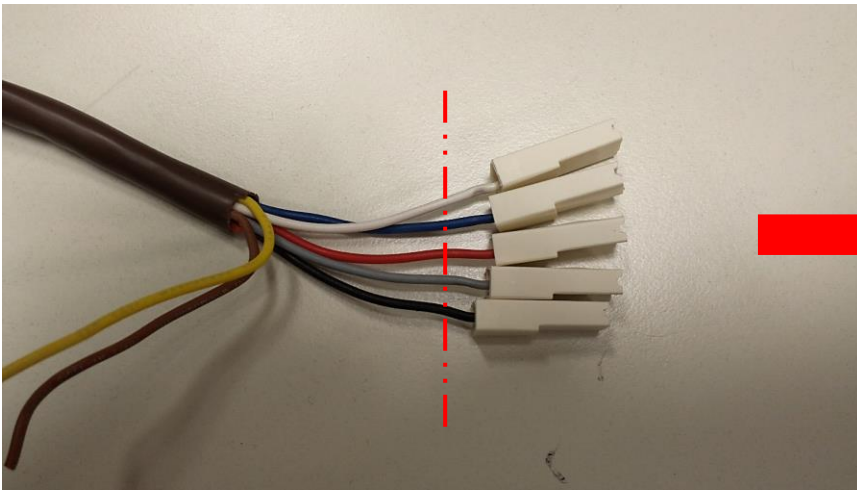
6. Disconnect the filter wires from the terminal block
7. Disconnect the filter



8. Connect the wires of the new filter (part of the kit) in the terminal block
9. Place the new filter (part of the kit)



10. Cut the motor wires (see the picture below).
This operation is necessary to avoid to change the motor. The motor cable have not a connector to fix it on the motor, so to change the cable it would be necessary to change also the motor.



11. Fix the fastons on the cutted wire using a gripper for faston (like those shown in the photo)

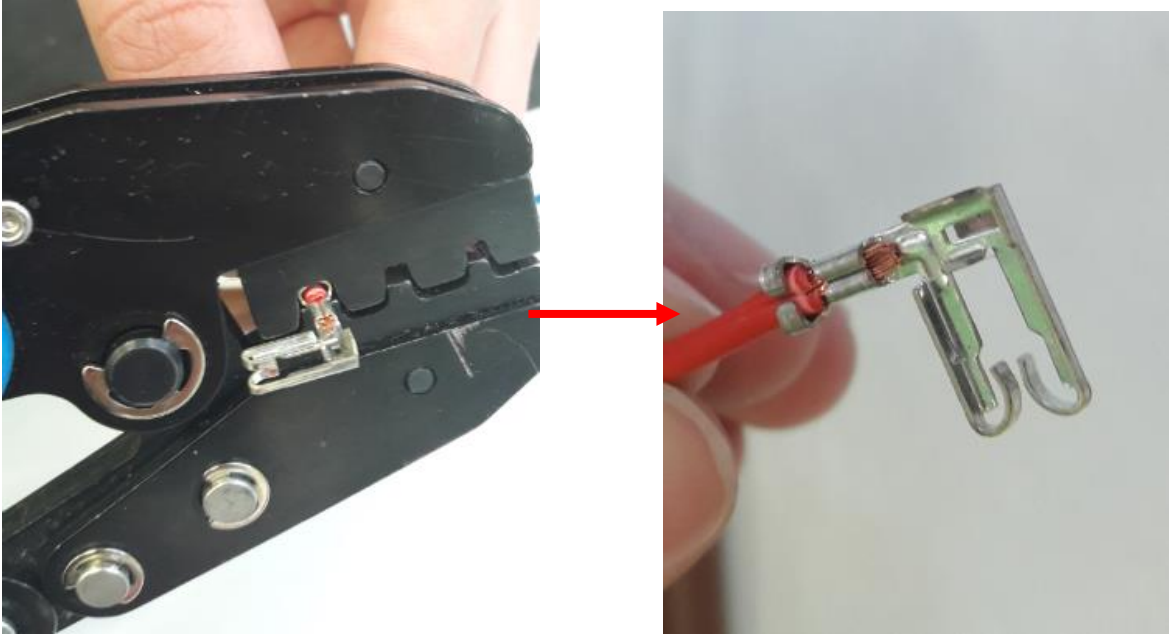


12. Insert the faston in the gripper (as in photo) and then insert the wire

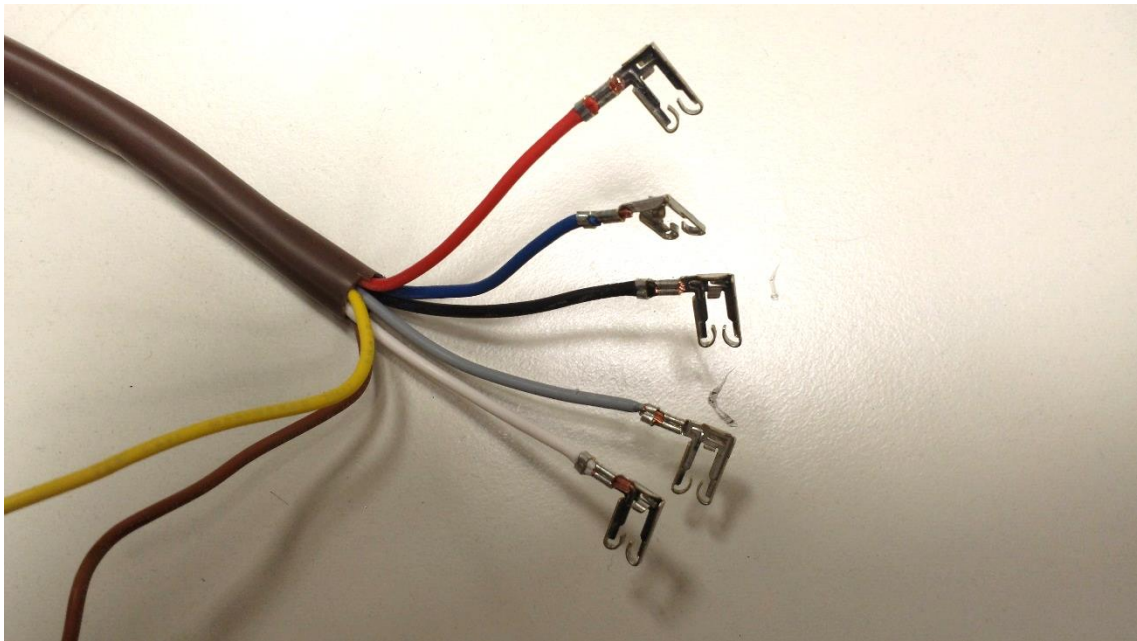


13. Press the gripper to fix the wire in the faston (as shown in the photos below)

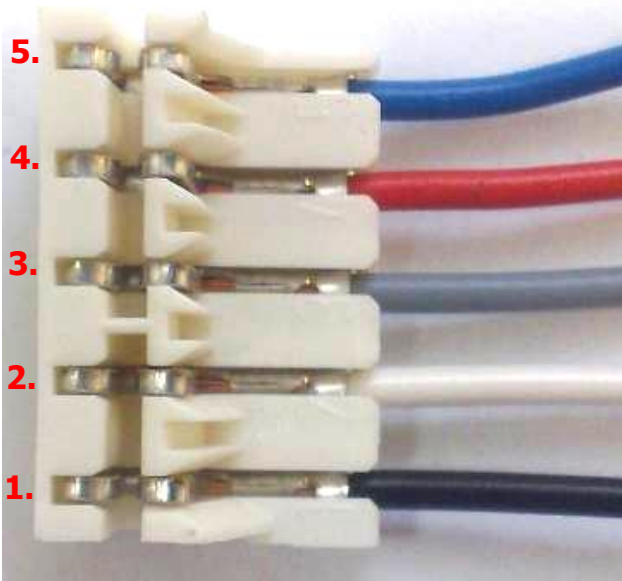




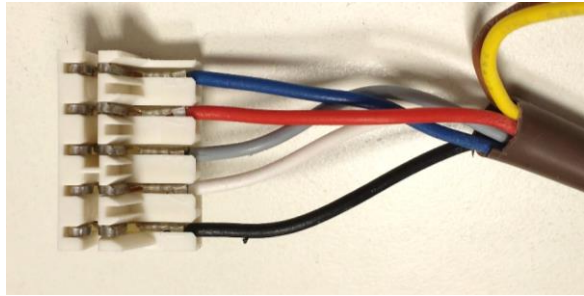
14. Repeat steps 12 and 13 for all motor wires



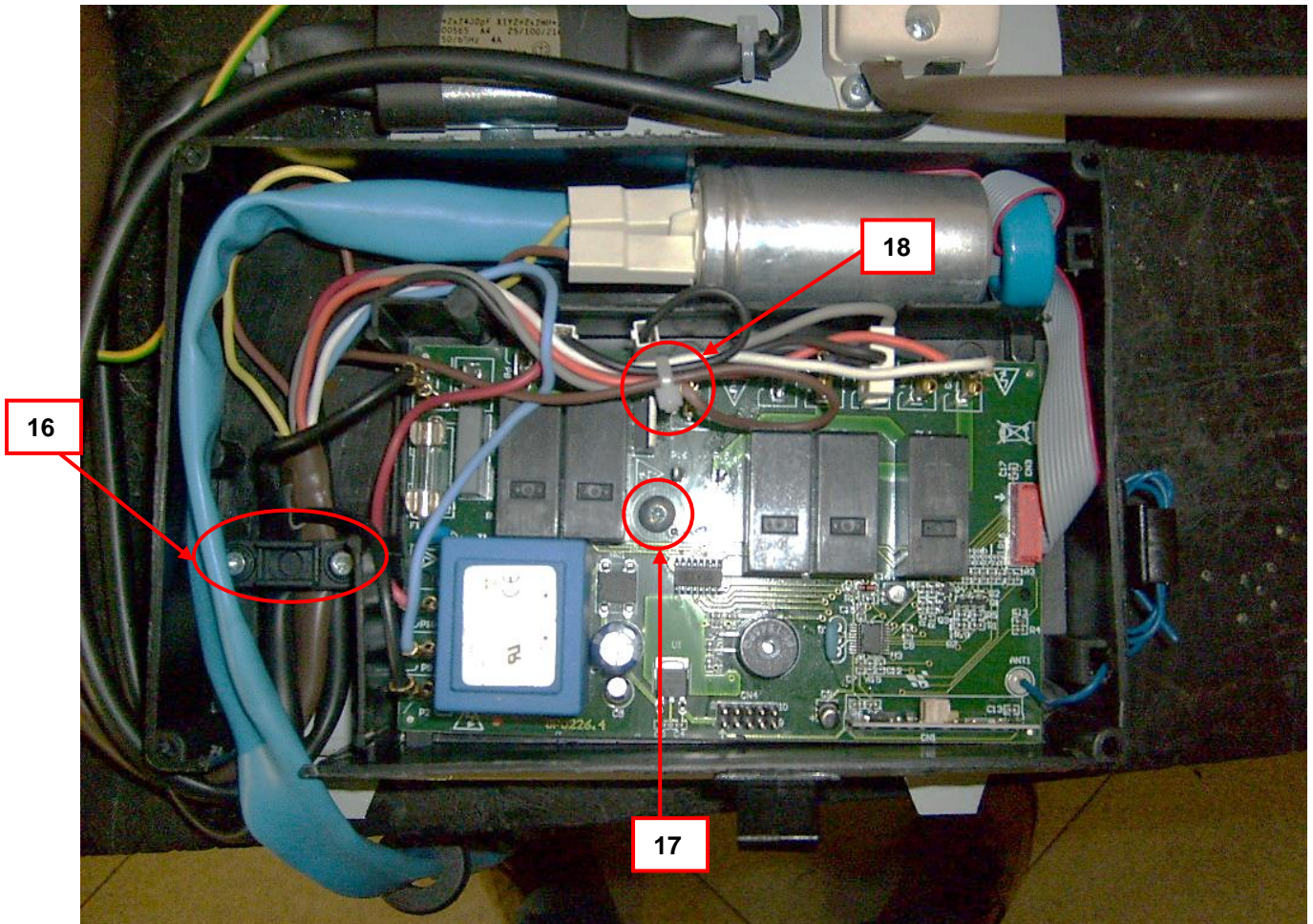
15. Insert the wire in the connector following the scheme indicated below



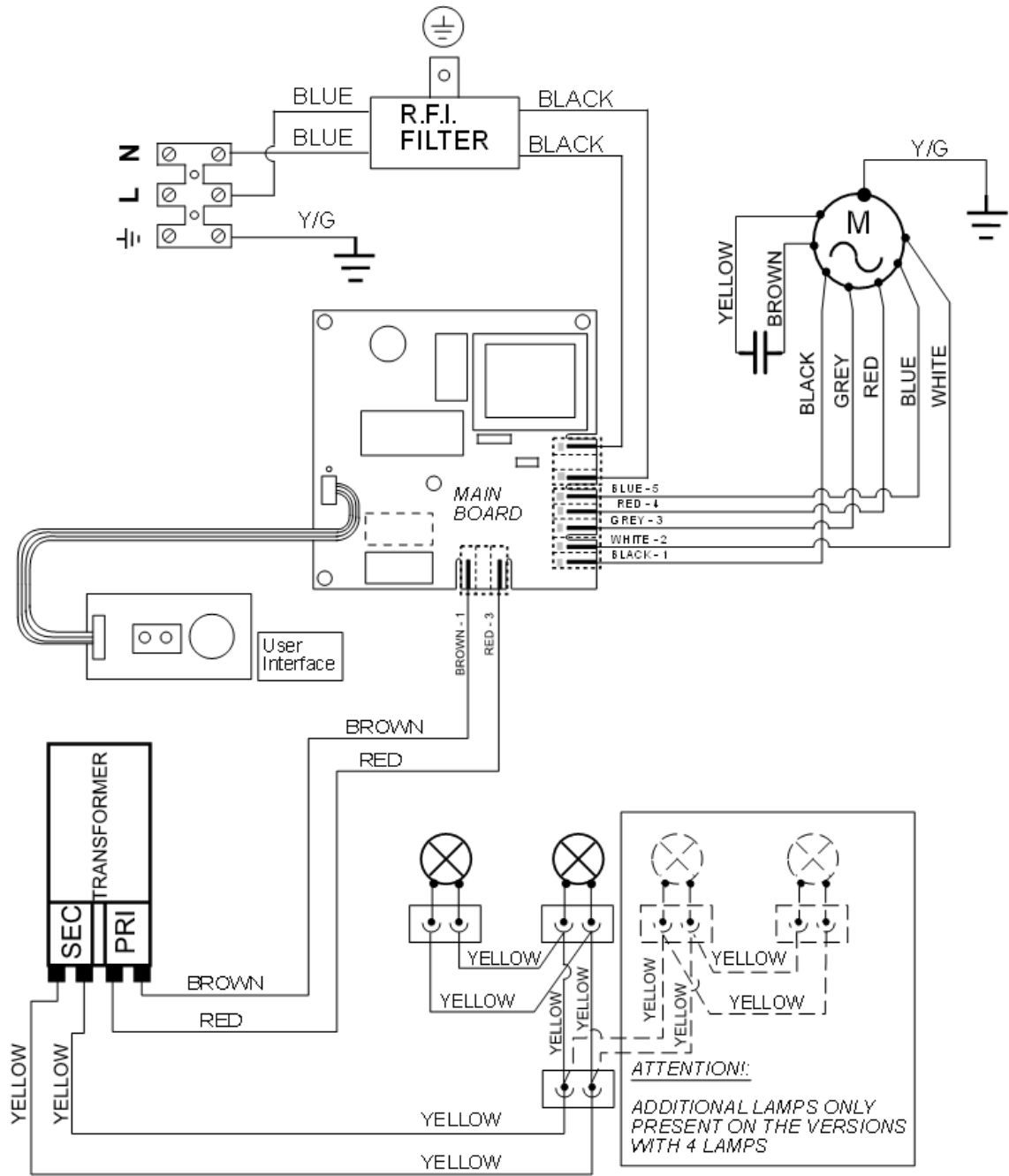
- | | |
|----|--------------|
| 5. | BLUE |
| 4. | RED |
| 3. | GREY |
| 2. | WHITE |
| 1. | BLACK |



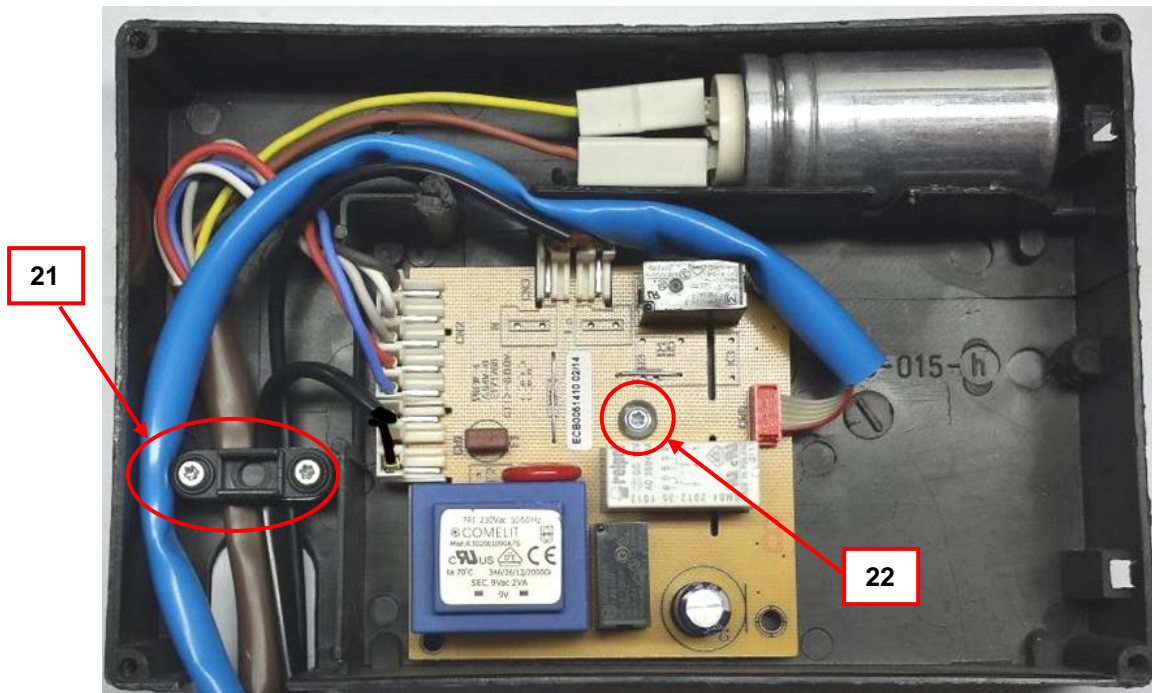
- 16. Remove the clamp that blocks the cable.
- 17. Remove the main board unscrew the screw circled.
- 18. Cut the plastic tie.
- 19. Disconnect all the cables on the main board



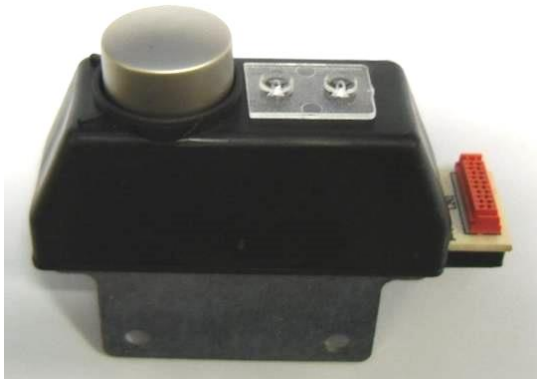
20. Connect the new main board (part of the kit) following the following electrical diagram.



21. Block the wires.
22. Block the main board inside the plastic box fixing the screw circled.



23. Replace the old user interface



With the new one (part of the kit)



Revision	Date	Description	Author	Approved by - on
00	13.07.2017	Document Creation		Dmytro Gavrylkiv