



POWER UNIT, CPU ASSEMBLY , CONTROL PANEL MOULDING PARTS CHANGE

PCN INVOLVED:

PNC	MODEL
947604046	MCC4060E-W
947604047	MCC4060E-B
947608046	MCC4060E-W
947608047	MCC4060E-B
947608399	MCC4060E-M
947608402	MCC4060E-M
947608407	MCC4060E-M

DESCRIPTION

The part code of the Power Unit, CPU Assembly, Control Panel Moulding used in the above model has changed. See part table below.

Note: The function of the Power Unit/CPU Assembly has changed in order to comply with EUP regulations, and therefore the clock function is to be changed. The clock setting button will be changed for use as a kitchen timer button (Stopwatch).

Important: All old parts must be replaced together as the old C/P moulding has been changed to accommodate the new PWB Assembly. The Power Unit & CPU Assembly will now be supplied hardwired together and will become one component instead of the previous two. For every replacement PWB Assembly required a new style C/P Moulding will have to be ordered as well. (See details below)

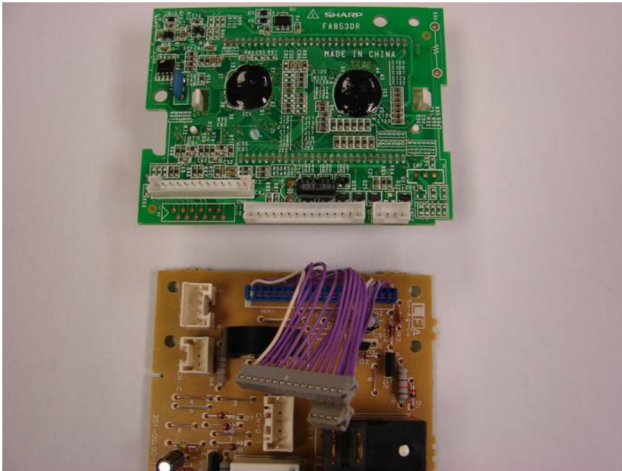


Current part – C/P Moulding

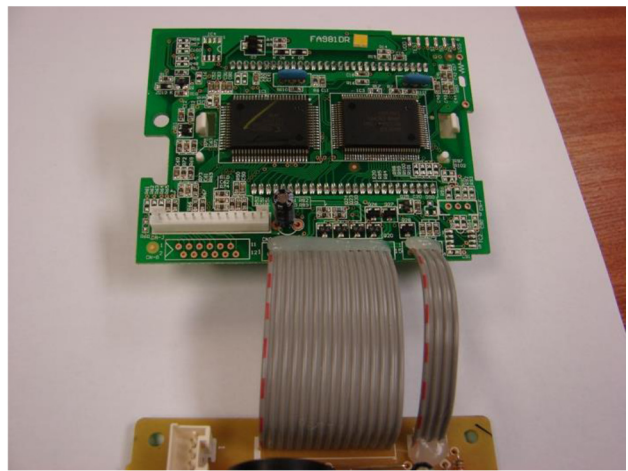


New Part – C/P Moulding

Red Circles highlight areas of modification to retain the new PWB Assembly.



Current Parts - Power Unit and CPU Assembly both received as separate units.



New Parts – Power Unit and CPU Assembly hardwired together now as one PWB Assy.

SPARE PART NUMBER

Pos No	Description	Old spare parts	Q'ty	New spare parts	Q'ty	Effective from
3-1	Power Unit	50286421008	1	4055283636	1	2010-03
3-2	CPU Assembly	50287729003	1			
3-5	C/P Moulding	50280481008	1	4055086948	1	2010-03

REVISION:

Revision	Date	Description	Author	Approved by - on
00	11/2017	Document Creation	Blanka Kucharska	Blanka Kucharska 2017-11

TB-M1002063