



Electrolux

© ELECTROLUX HOME PRODUCTS
Customer Care - EMEA
Training and Operations Support
Technical Support

SERVICE MANUAL

OVENS

Module: User Interface

iTex10



1 PRECAUTION



Information "Warnings"

All work with open appliances must be done with the mains supply disconnected.

Work on electrical equipment should only be carried out by qualified personnel.

Before working on a device, check the efficiency of the system casing using appropriate equipment. As an example, refer to the indications described / illustrated in the portal Electrolux Learning Gateway (<http://electrolux.edvantage.net>).

After the work, carry out electrical safety tests and ensure that the all safety devices are working properly.

In the case of manipulation / replacement of the PCB, use the ESD kit (Code 405 50 63-95/4) to prevent electrostatic discharge damage the circuit board see SB No. 599 72 08-09

Document Revisions

Revision	Date	Description	Approved by
0.0	10/2017	Document creation	

2 PURPOSE OF THIS MANUAL

The purpose of this Manual is to provide information of Ovens User Interface iTex10

3 CONTENTS

1	PRECAUTION	1
2	PURPOSE OF THIS MANUAL	1
4	AESTHETICS OF ITEX10	3
5	ELECTRONICS ITEX10.....	4
6	ACCESSING UI ITEX10	7
7	DEMO MODE.....	11
8	SERVICE MODE.....	12
9	ERROR CODES.....	17

4 AESTHETICS OF ITEX10

User interface:

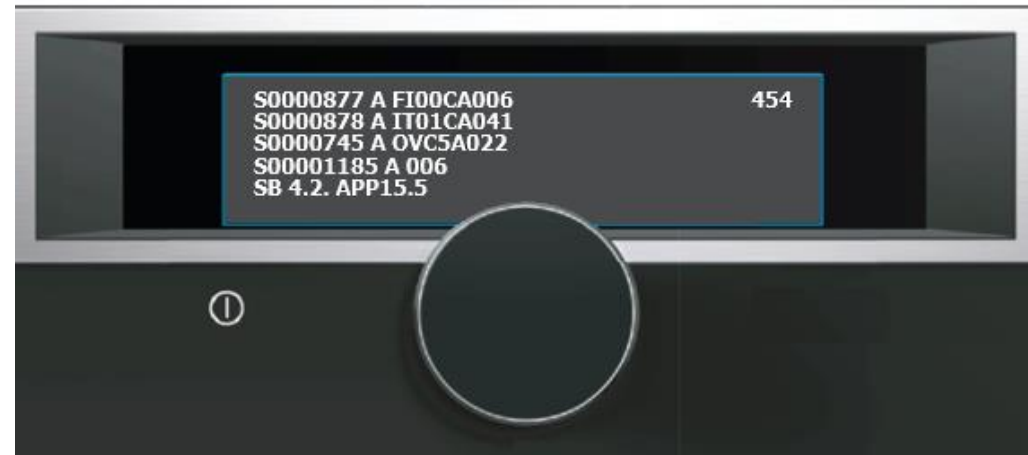
- Input module for UI family iTex 1,10,100

Integrated functionalities:

- Metal ring with capacitive touch sensor
- Digital Bit-Encoder signal by turning
- Electrical micro switch signal by pressing

Design and mechanical demands:

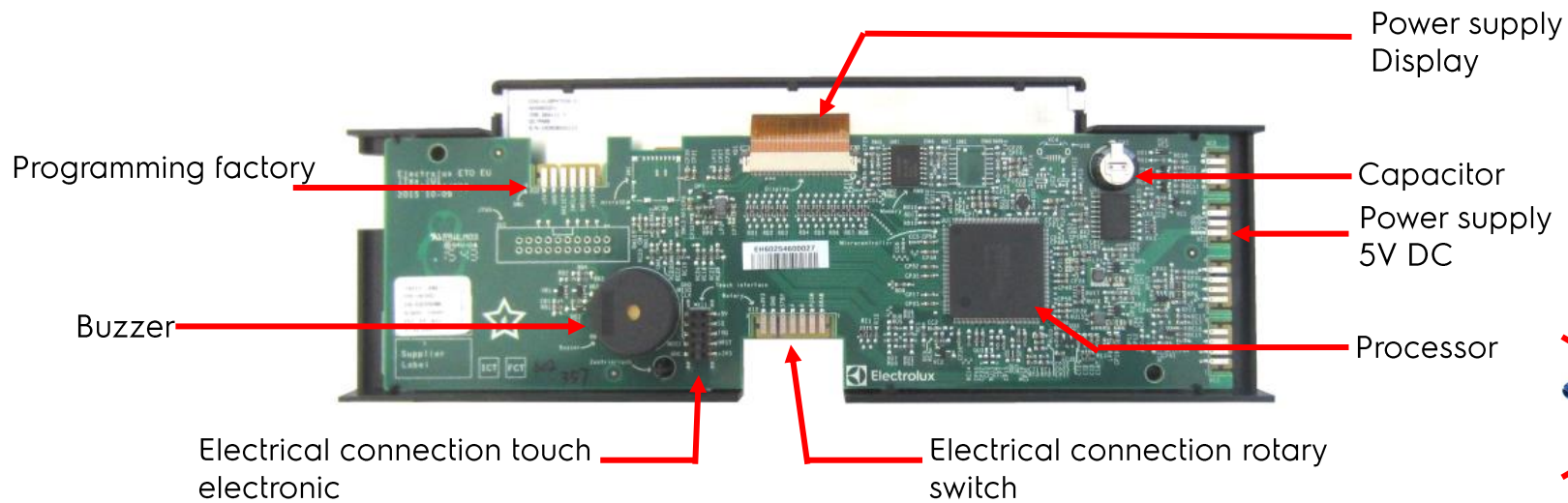
- “Best in Class” for FFF (Fit Feel Finish)
- Click rotating
- Real glass inlay and metal ring
- Short and smooth travelling way by pressing
- Mechanical feedback by pressing and rotating



Attention ! Be careful during the assemble of the rotary switch. The rotary switch isn't coded and it is possible to mount the rotary switch in a wrong way. 180° rotated. The function is still working correctly

5 ELECTRONICS ITEX10

5.1 USER INTERFACE ITEX



!! Sidekick is not available

5.2 TOUCH ELECTRONICS

Pins thicker and stronger are more stable. Touch electronics is connected to UI by this pin and not glued



Power supply

Electrical connector touch foil

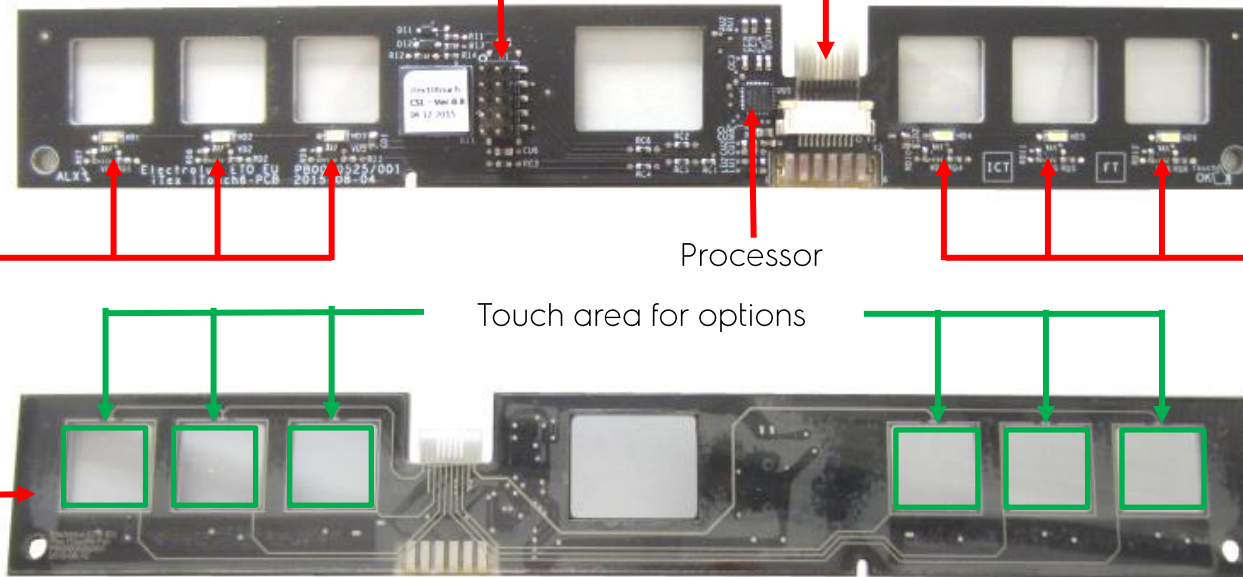
3 LED's for options

Processor

3 LED's for options

Touch area for options

Touch foil (glued)

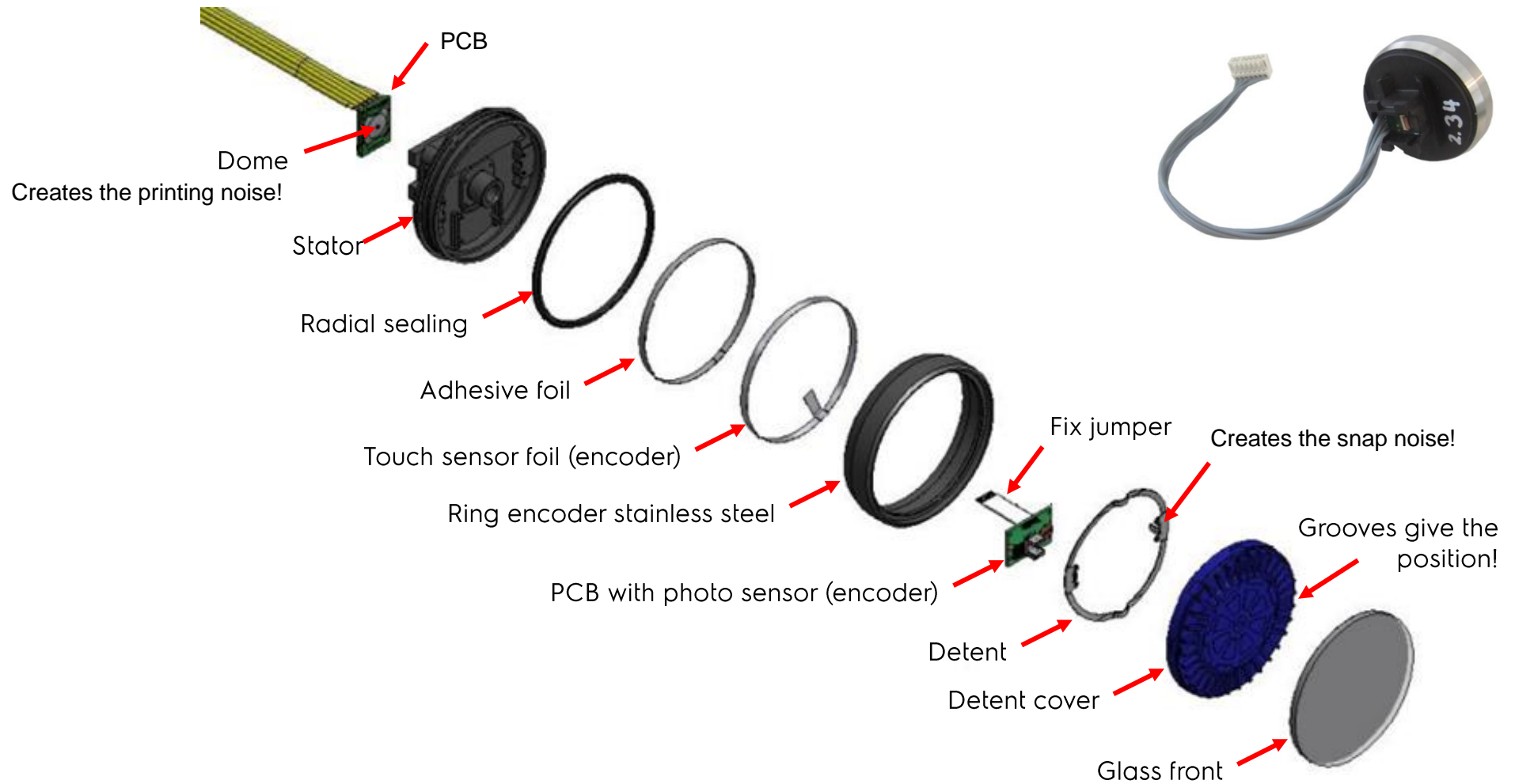


The special customer settings (clock, brightness, favourites etc.), are stored in the processor on the touch electronics.

Attention !

- To activate the service mode, it is necessary to reset all customer settings
- The touch electronics and the user interface must be synchronized

5.3 ROTARY SWITCH (SHUTTLE)

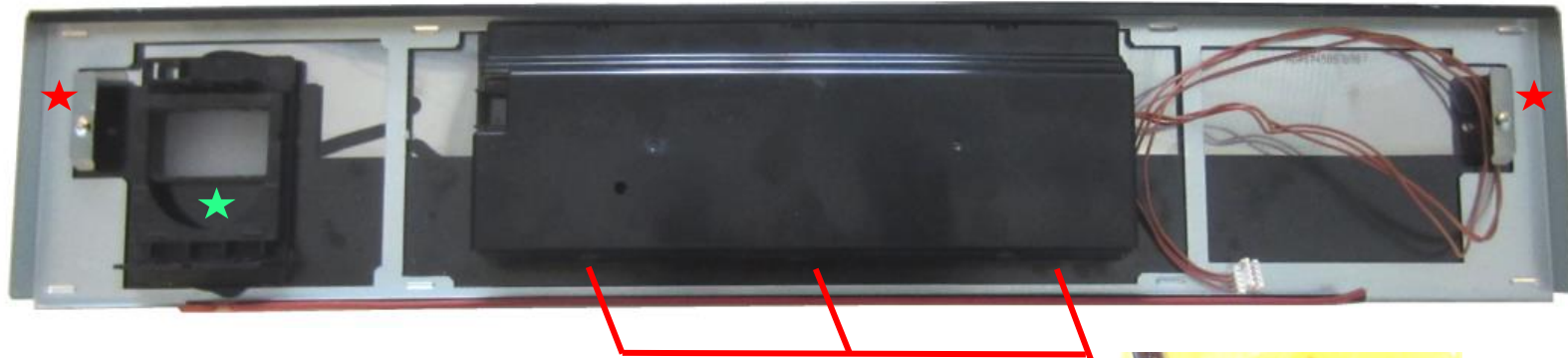


Attention !

No error code available for the rotary switch

6 ACCESSING UI ITEX10

6.1 UNLATCH THE UI COVER



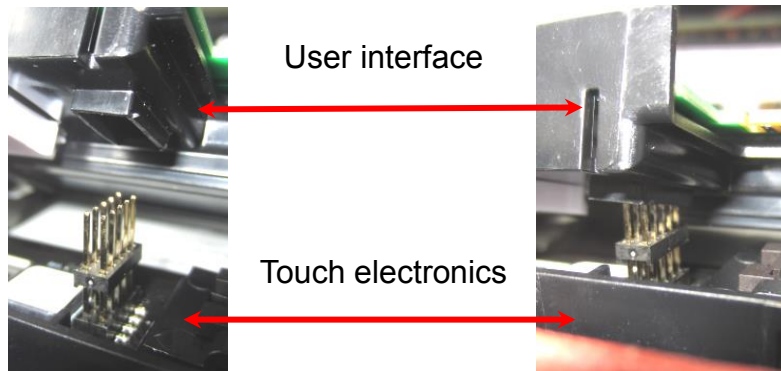
Unlatch the three clips one by one on the cover with a screwdriver and pull up the cover



Disassembly the panel support from the housing (★2 screws). On steamer, unlatch the ★ water drawer

6.2 UNLATCH THE UI FROM THE PANEL SUPPORT

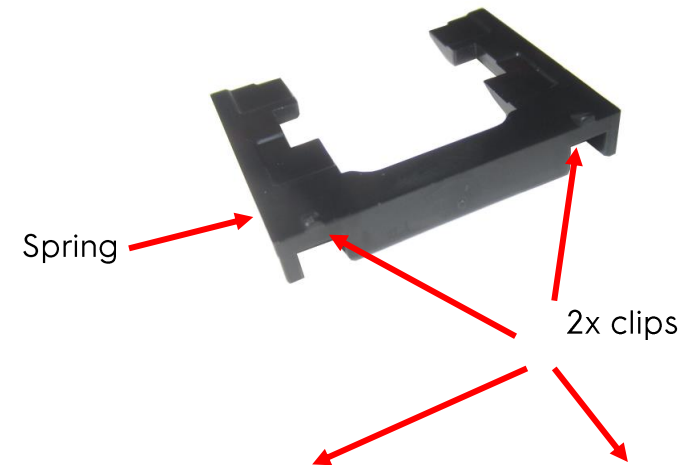
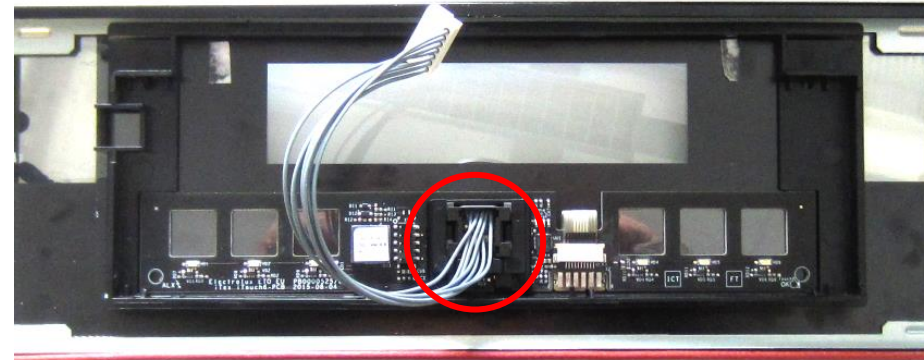
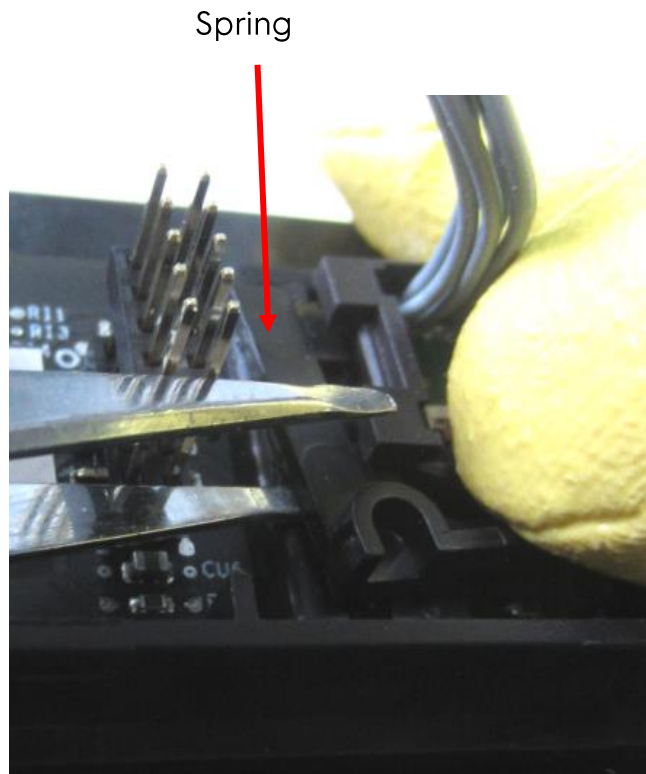
Unlatch the user interface from the panel support (6 clips).



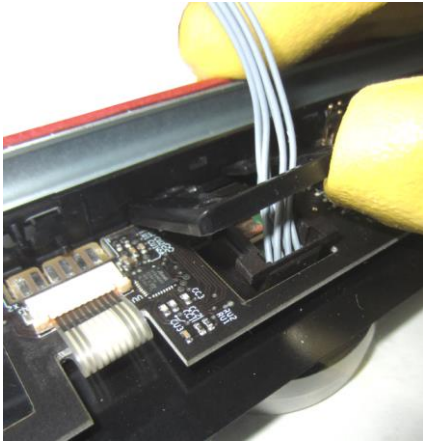
Unplug the user interface from the touch electronics. Be careful during assembly

6.3 DISASSEMBLE THE TOUCH ELECTRONICS, ROTARY SWITCH

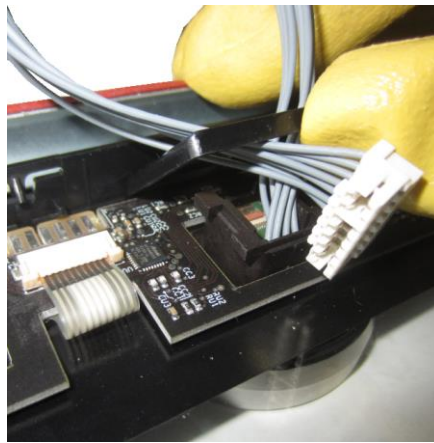
Unlatch the spring for the rotary switch.



Lift up the holder.



Pass the cable through the holder.



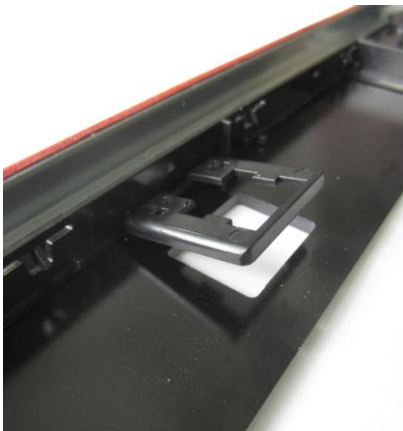
Pull out the user interface.



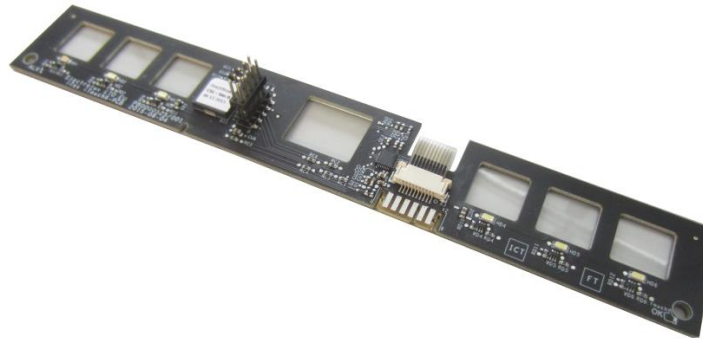
Remove the rotary switch.



Holder



User interface.



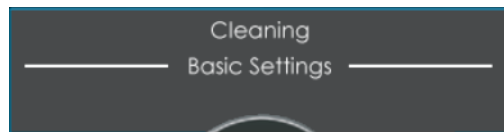
Rotary switch.



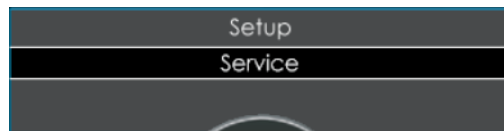
7 DEMO MODE

Activate demo mode: The appliance is in off-state

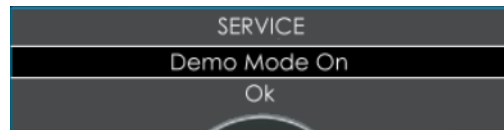
1. Switch on the appliance.
2. Select "Menu" and press the shuttle.
3. Select "Basic Settings" and press the shuttle.



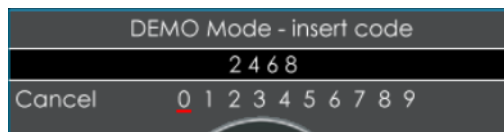
4. Select "Service" and press the shuttle.



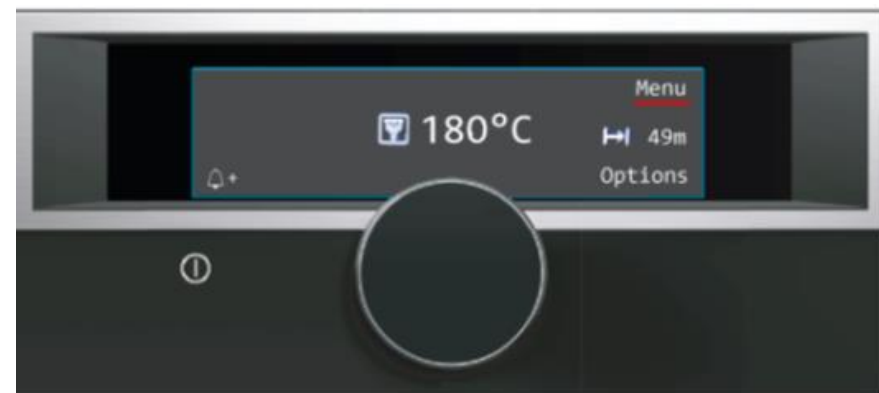
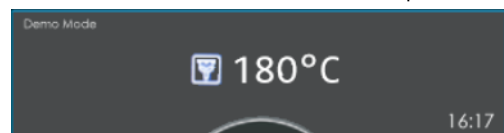
5. Select "Demo Mode On" and press the shuttle.



6. Insert the activation code: → **2 : 4 : 6 : 8**



Choose the number via shuttle and press to confirm the number.



Deactivate demo mode: Same procedure.

8 SERVICE MODE

Activate service mode: Disconnect the appliance once from the power supply

The activation of service mode can only be done, while the software appears for approx. 7 seconds

- First line: Firmware from user interface
- Second line: Configuration from user interface
- Third line: Firmware from power electronics
- Fourth line: Firmware from touch electronics
- Fifth line: Story board vision

454: Working hours



Touch simultaneously the "START" key and the "STOP" key for approx. 2 seconds. Buzzer sounds.

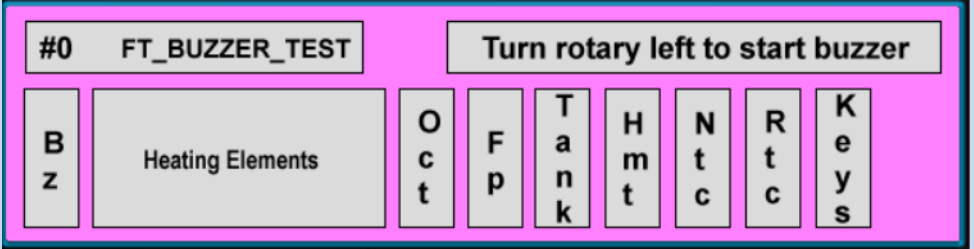
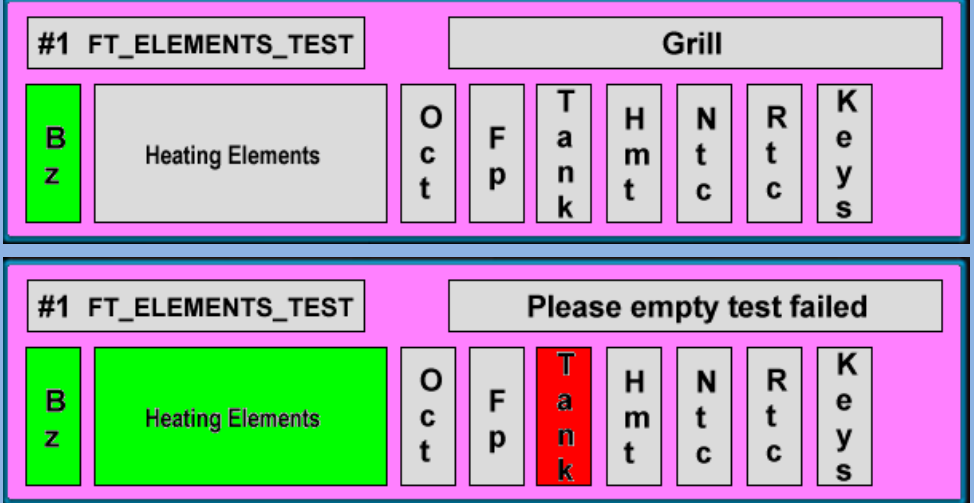
Attention!

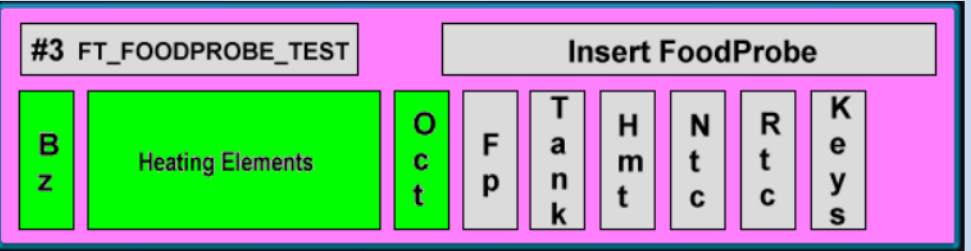
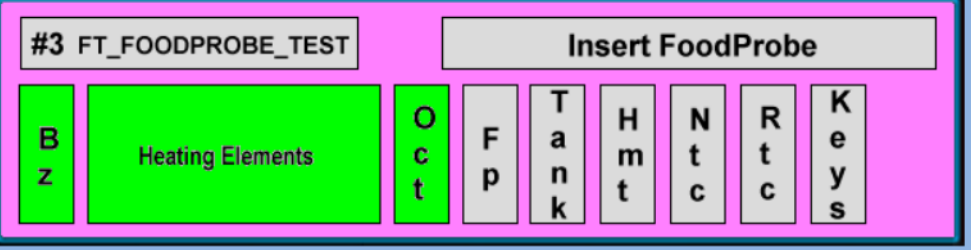
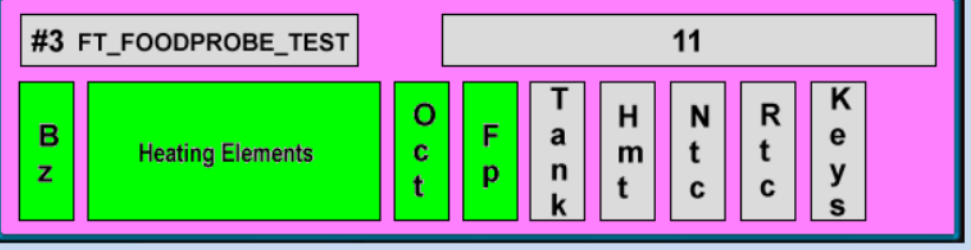
It is necessary to empty the water tank before you start the service mode

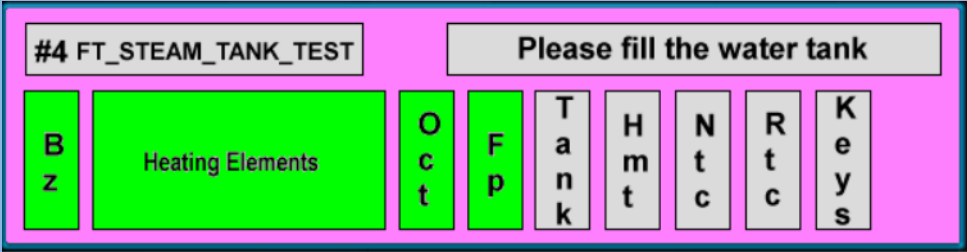
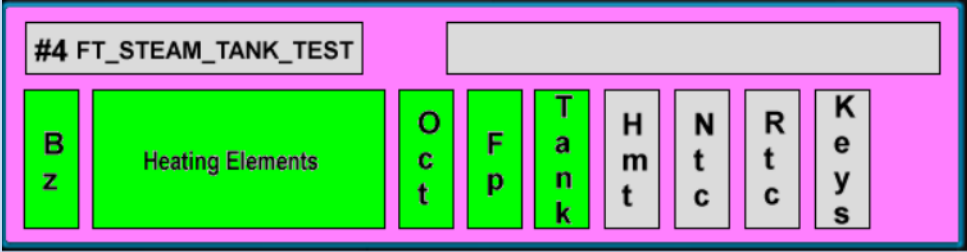
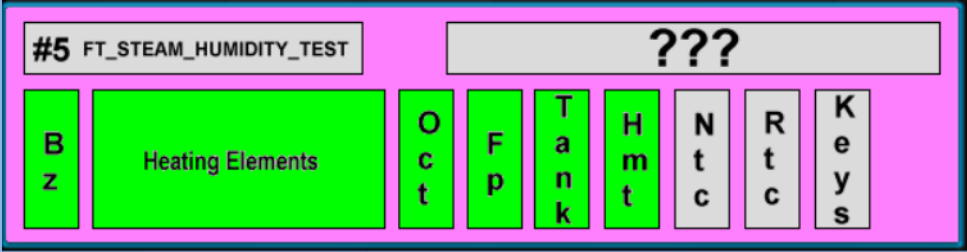
The "Grey" boxes are items that are running tests or not start yet.

The "Green" boxes are items that passed the test.

The "Red" boxes are items that didn't pass the test.

Step	Procedure	UI Display
1	<p>Bz → Turn the rotary left to start the buzzer test.</p> <p>Buzzer sounds continuously.</p> <p>Press the rotary to stop the sound and to continue</p>	
2	<p>Depends on oven configuration!</p> <p>Heating elements → Turn the rotary left, step by step.</p> <p>Grill - Descalling_actuator - Inlet valve - Waste actuator - Evaporator - Steam channel flow - Cook fan - Rear + Cook fan + Lamp - Bottom - Grill → Press the rotary to continue</p> <p>After the start of service mode, the user interface will check the water level in the water tank. The error will appear after the step 2.</p> <p>Attention!</p> <p>Interrupt the service mode and empty the water tank</p>	

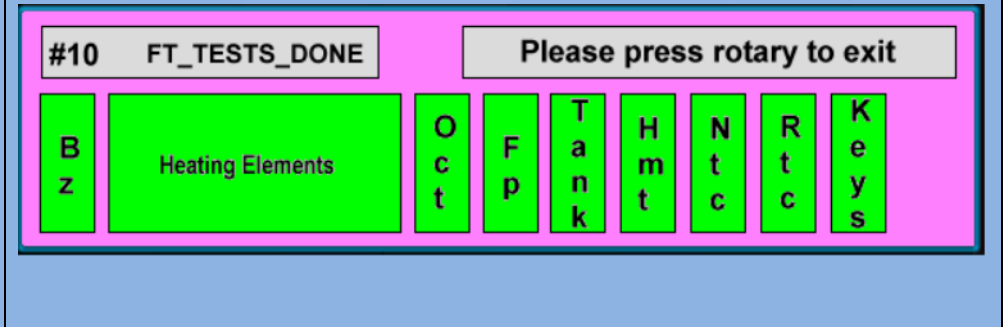
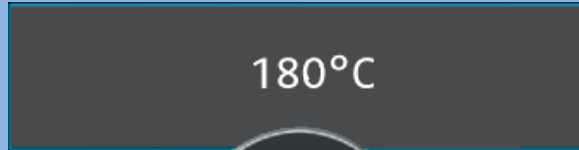
3	<p>Oct → Oven control temperature (PT500) 27 →ADV (analog digital value) byte-value Turn the rotary right to continue.</p>	 <p>The diagram shows a control panel with a pink background. At the top left is a label '#3 FT_FOODPROBE_TEST'. To its right is a grey box labeled 'Insert FoodProbe'. Below these are several buttons: a green 'Bz' button, a large green 'Heating Elements' button, a green 'Oct' button, and a row of seven white buttons labeled 'Fp', 'Tank', 'Hmt', 'Ntc', 'Rtc', and 'Keys'.</p>
4	<p>Fp → Plug in the food probe sensor.</p>	 <p>The diagram is identical to step 3, showing the control panel with the 'Insert FoodProbe' label and the 'Fp' button highlighted.</p>
5	<p>Fp →Food probe sensor is placed. 11 →ADV (analog digital value) byte-value Fp →Unplug the food probe sensor</p>	 <p>The diagram is identical to step 3, but the grey box at the top right now displays the number '11' instead of 'Insert FoodProbe'.</p>

6	Tank → Fill up the water tank	 <p>The screen displays the test ID #4 FT_STEAM_TANK_TEST and the instruction Please fill the water tank. The rotary switch is set to Tank. The Heating Elements indicator is lit green. The Keys indicator is also lit green, indicating that the test is active.</p>
7	Tank → Water tank is filled. Turn the rotary right to continue	 <p>The screen displays the test ID #4 FT_STEAM_TANK_TEST. The instruction area is empty. The rotary switch is still set to Tank. The Heating Elements indicator is lit green. The Keys indicator is no longer lit, indicating the test has completed.</p>
8	Hmt → Checks the humidity sensor. ??? → ADV (analog digital value) byte-value	 <p>The screen displays the test ID #5 FT_STEAM_HUMIDITY_TEST and the instruction ???. The rotary switch is set to Hmt. The Heating Elements indicator is lit green. The Keys indicator is also lit green, indicating the test is active.</p>

9	<p>Ntc → Checks the NTC from steam generator. 552 → ADV (analog digital value) byte-value</p>	
10	<p>Rtc → Checks the timer (Real Time Clock).</p>	
11	<p>Keys → Touch the On/Off-key</p>	

12

Tests done → Press the rotary to exit



9 ERROR CODES

Refer 599 7933 13 en