



## OVERHEATING IN PUZZLE CEILING COOKER HOODS.

### DESCRIPTION:

The hood stops working.

### REASON

Overheating of the environment in which was the main board (closed metal box, outside of the airflow). The increasing of the internal temperature of the box limits the ability of motor driving circuit to dissipate properly the heat produced. As a result, some components of the circuit worked under abnormal conditions that have caused the breaking of the same components.

### MODELS INVOLVED

PNC	Model
942122873	X91484MG1
942122894	EFGP12680X
942122899	EFGP12680X
942150326	IUSL1270WE
942150545	DCK0270HG

### SOLUTIONS

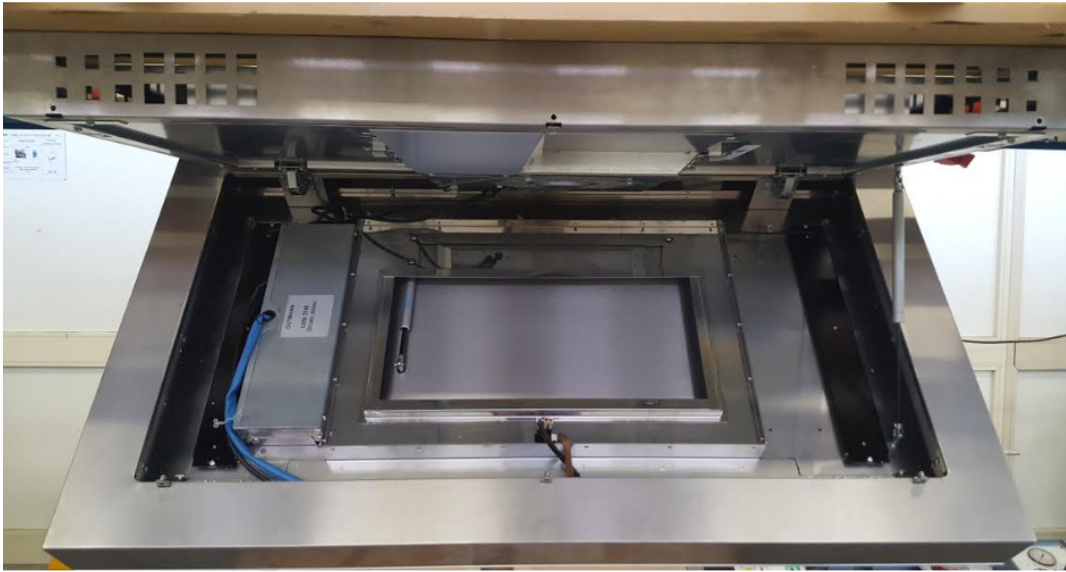
1. Modification of the metal box that contains the main board, inserting some slots to allow air circulation and heat dissipation
2. Firmware modification in order to optimize the driving of the second and third speed. In this way the circuit generates less heat.

### INSTRUCTIONS

- **For the hoods produced BEFORE wk 41/2016 (before SN 641xxxxx)**, it's necessary to change the PCB with one which has an updated firmware and change the PCB box and box cover with ones which have the holes

Follow the instructions below:

1. Switch off the appliance
2. Unscrew the three screw in the circles (see picture)



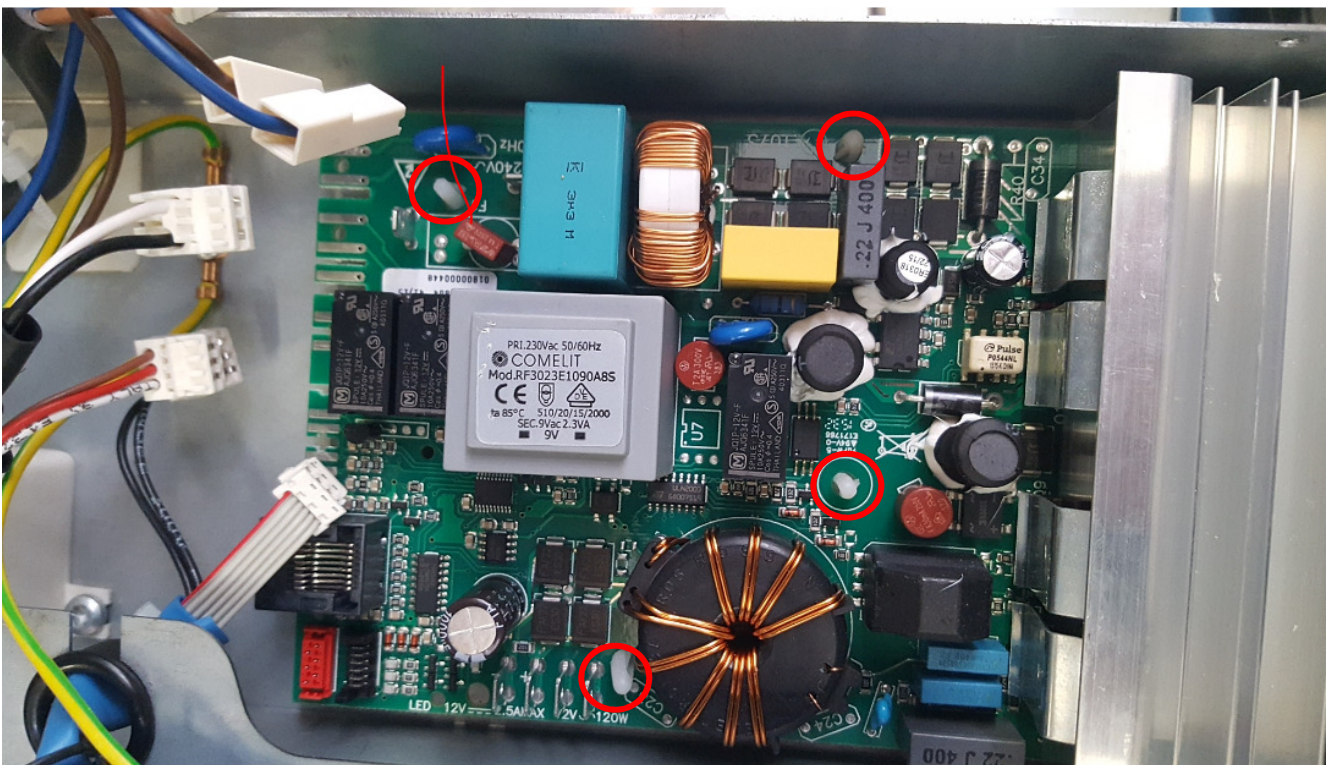
3. In order to change the metal box, unscrew the four screw in the circles



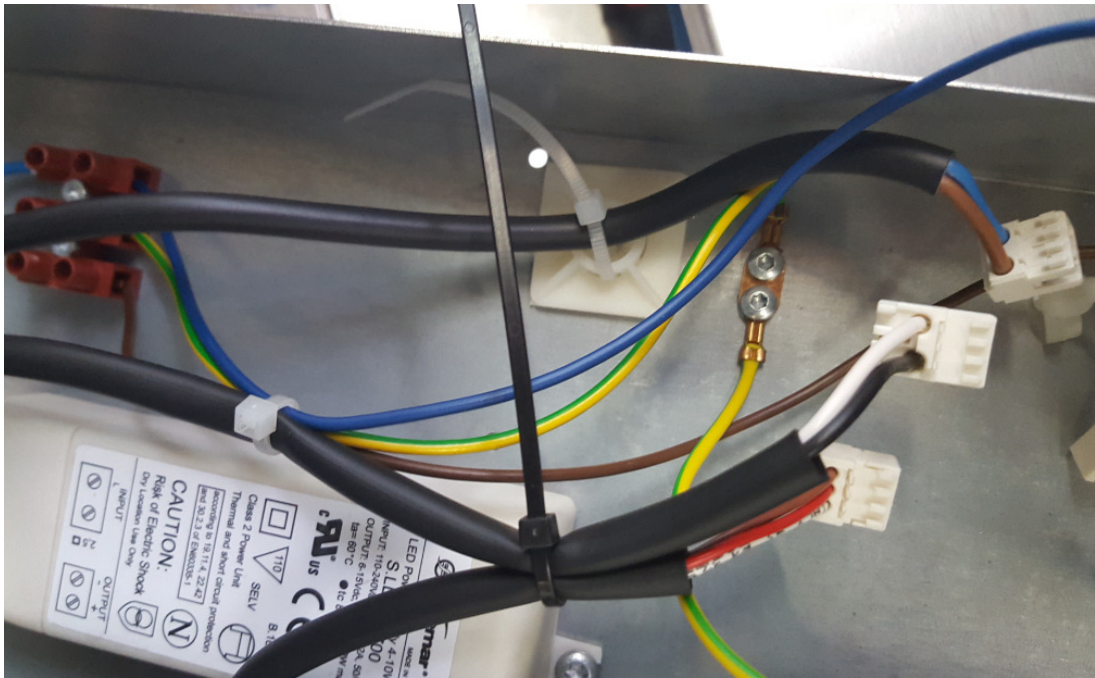
4. Unscrew the screw of the cover



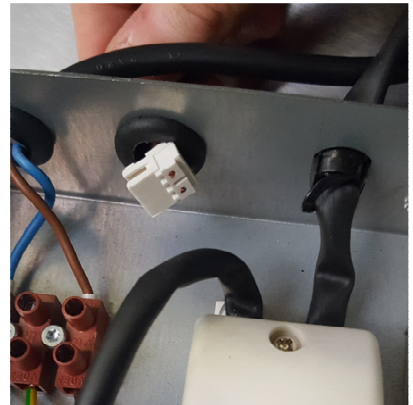
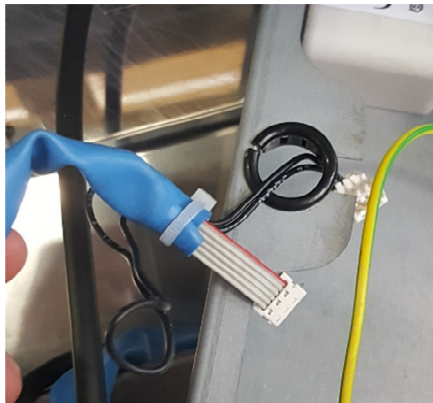
5. Disconnect all cables and remove the board from the box (pay attention to the pins in the circles)



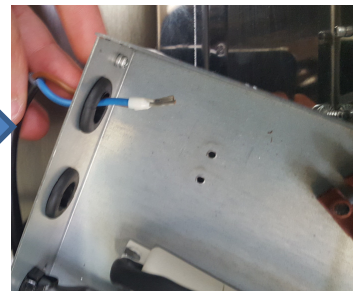
6. Cut the plastic bands



7. Remove all the cables from the box



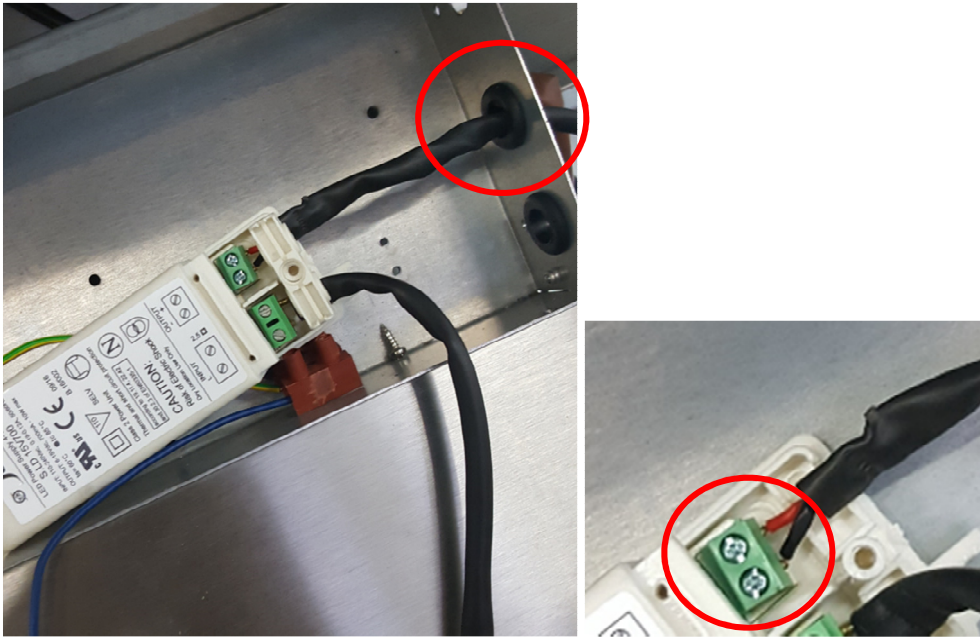
8. Remove the ground connection and the terminal block



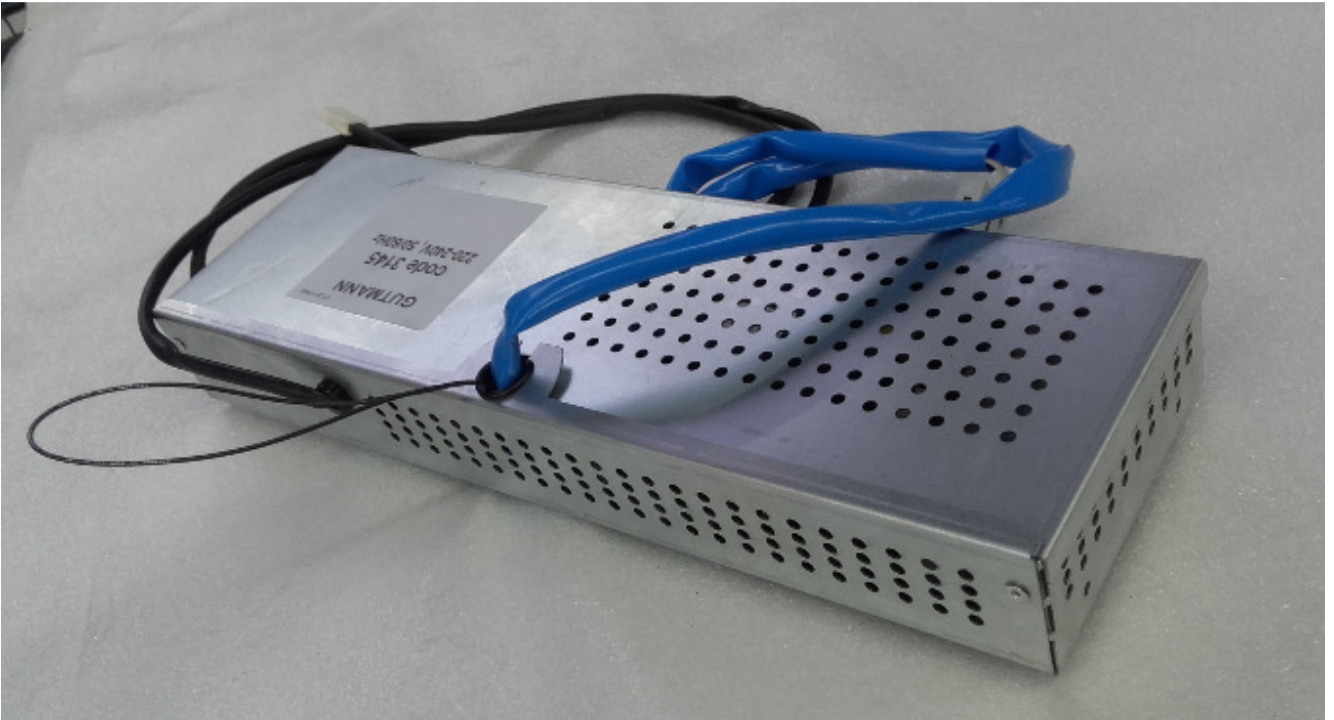
9. Unscrew the screw that fix the transformer on the box



10. Disconnect the wires in the transformer in order to remove the transformer from the box



11. Change the metal box and box cover using the spare components with the holes

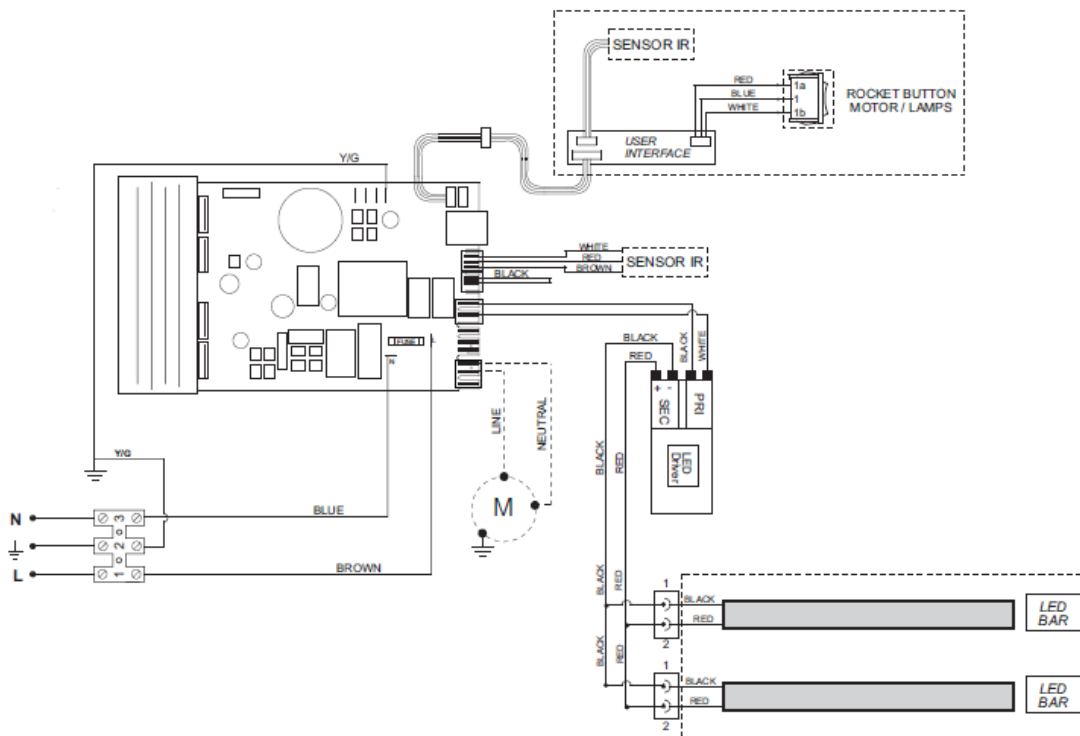


12. Fix the transformer, the terminal block, the ground connection and the main board (see picture).

Fix the cables with plastic band (see picture)



13. Connect the wires like in the electric diagram



14. Close the cover and place the box in the hood

- **For the hoods produced from wk 41/2016 until wk 50/2016 (from SN 641xxxxx to SN 649xxxxx), it's necessary to change only the PCB with one which has an updated firmware.**

**INSTRUCTION:**

Follow the sequence described above until the step 5. After remove the main board and place the new one in according with the electrical diagram.

**SPARE PART NUMBER**

Parts needed for exchanging:

- 1) **MAIN BOARD** → 4055339651
- 2) **METAL BOX** → 4055386694
- 3) **COVER METAL BOX** → 4055386686

**REVISION:**

Revision	Date	Description	Author	Approved by - on
00	03/2017	Document Creation	Dmytro Gavrylkiv Blanka Kucharska	Dmytro Gavrylkiv Blanka Kucharska 2017-03