

**ICING IN MULTIFLOW COVER PREVENTION
466 COMBI NO FROST PRODUCTS****DESCRIPTION:**

In case of observing events below, please melt the whole ice completely.
After that, please replace the new mainboard and the multiflow 4055343364.

- Icing between the freezer multiflow plastic and the Styrofoam (Photo 1-2)
- Icing among the blowing hole of the multiflow (Photo -3)
- Running noisy the propeller by rubbing to the ice because of icing at the multiflow (Photo-4)
- The insufficient cooling because of the propeller not running

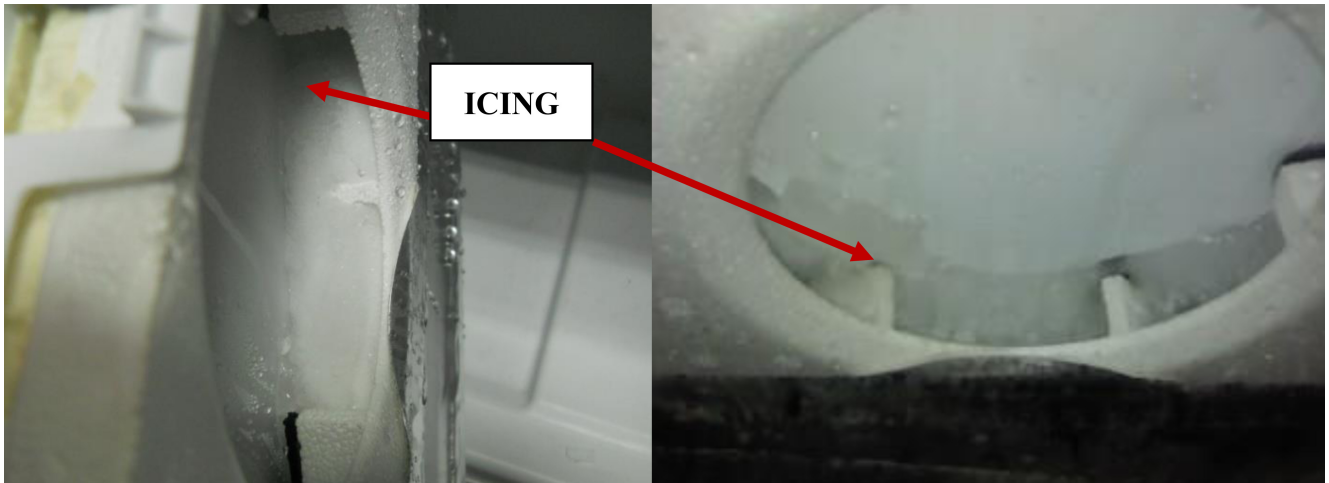
ICING

Photo -1

Photo -2



Photo -3

Photo -4

PNC/MODEL:

PNC	Model
925993134	EN4084JOX
925993136	S74010CMX2
925993144	S74011CMX2

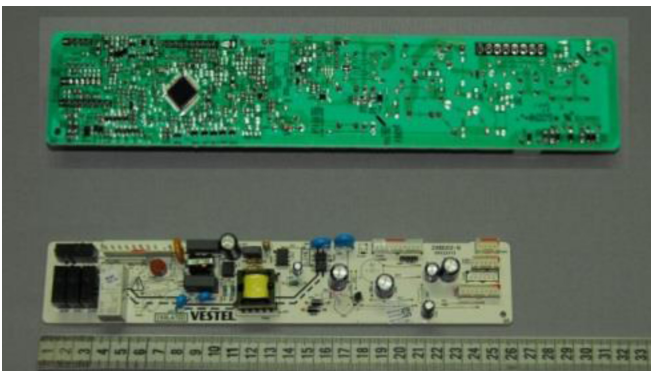
Note:

Only serial numbers before 546xxxx are affected by cold module ice built issue.
PCB with new software was implemented in production on week 46 2015.

SERVICE PART

NEW PCB:

4055368718- Main electronic board



MULTIFLOW PART: 4055343364

CAUTION: The Plug must be pulled out before the mainboard group is assembled!

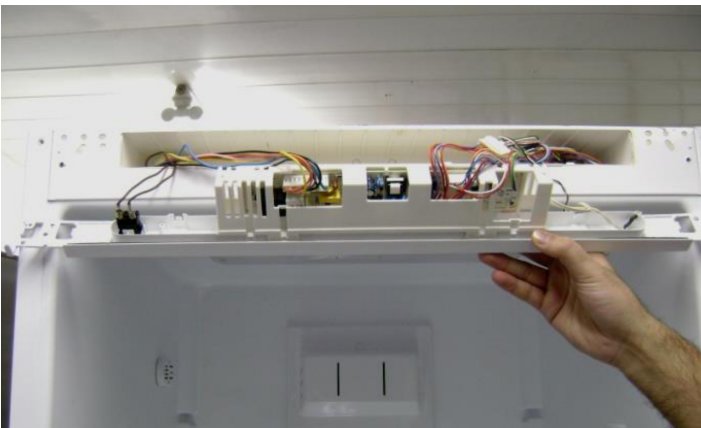
SOLUTION



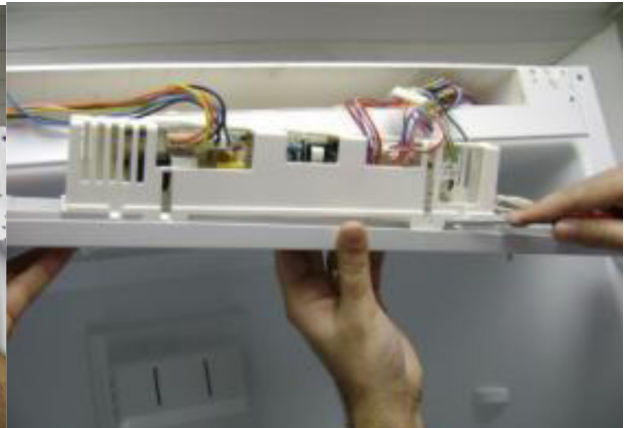
1. Remove the panel cap by the help of the slotted Screwdriver



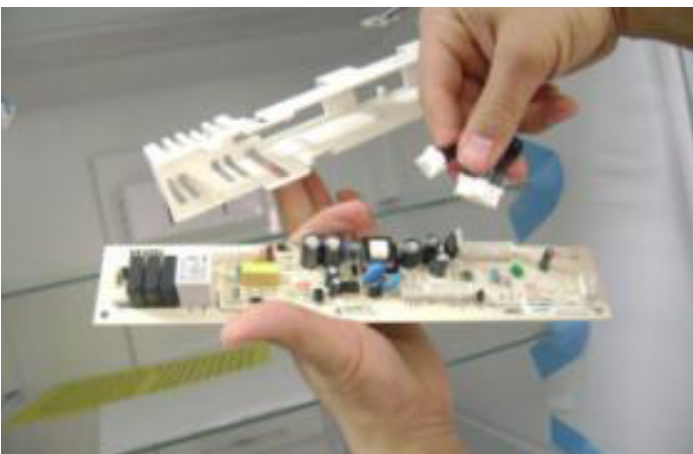
2. Unscrew the panel screws.



3. Disconnect the mainboard connector and the light sensor connector.



4. Disassemble the body panel and the panel group. Please, pay attention the panel corner details and then remove the mainboard



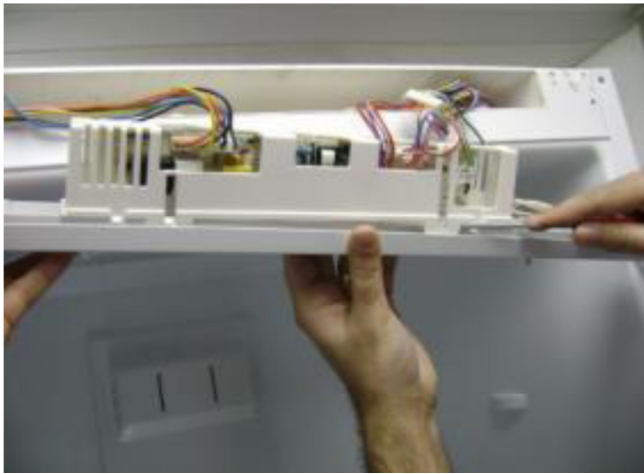
5. Replace the mainboard.



6. Assemble the mainboard group to the panel group.



7. Connect the mainboard connector and then place the mainboard group on housing.



8. Place the body panel.

REVISION:

Revision	Date	Description	Author	Approved by - on
00	12/2016	Document Creation	ALPER YOLCU BLANKA KUCHARSKA	EMRAH ŞAFAK BLANKA KUCHARSKA 2016-12
01	02/2017	Update	BLANKA KUCHARSKA	BLANKA KUCHARSKA 2017-02