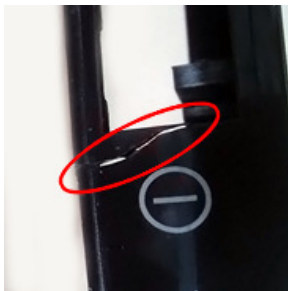


Cracks on front panel near the display and on the corners on dishwashers with standard hinges

DESCRIPTION:

Many cases of cracked control panel are a result of an improper mounting of the decorative furniture plate. It has been observed that customers remove the original screws from inner door and replace them with some alternatives. As a result the plate causes additional pressure on the panel. This causes a change in the tension put on the control panel during normal operation and may result in panel damage. This is mostly seen near the display section, as shown on the pictures below:



Cracks on front panel display area – examples.



Use of additional screws - example

IMPORTANT: Improper mounting of the panel voids the warranty.

SOLUTION:

The installation of decorative furniture plate has to be done using only original screws. They have to be placed as described in the installation instruction. It is not allowed to use any alternatives or additional screws (except for sliding door hinges).

It is highly recommended that the service technicians check the proper mounting during any intervention. If it is not done in a proper way, it has to be corrected to avoid future damage to front panel.

SPARE PART NUMBER:

The proper screws can be found as a mounting kit in a spare part list relevant to the appliance.

QES CODE:

During the intervention, please use codes:

Component	201
Defect	8 or 21

MODELS INVOLVED:

This bulletin is valid for all built-in dishwashers that are in production or are already on the market. It is not valid for appliances with sliding door hinges.

REVISION:

Revision	Date	Description	Author	Approved by - on
00	12/2016	Document Creation	Marcin Kobiałka	Tomasz Kalbarczyk 2016-12-19