

Dometic GmbH, In der Steinwiese 16, D-57074 Siegen

FJ 1100, FJ 1700, FJ 2200

Creation of water condensation

In above mentioned air conditioners condensation water can occur.

Please check if the following causales of creation of water condensation can be excepted before installation of one of the below mentioned kits.

- Operating error: The choosen target temperatur is very low. The air conditioner is in continuous operating (e.g. choosen 18°C if the outside temperature is 38°C).
- Faulty sealing between air distribution box and roof top part.
- Open door and windows.
- Wrong installation of the air conditioner. The air can't circulate in the right way (fig. 1).

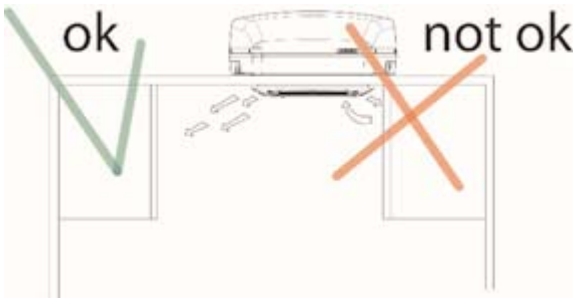


fig. 1

At first it must be checked whether the condensation kit 1 (81-BB-36601) is installed already.

This can be validated by the plastic wall in the front of the air conditioner (fig. 2 + 3). If this plastic wall is missing, the kits 1 (81-BB-36601) and 2 (81-B-36602) must be installed to avoid ice formation on the evaporator (fig. 3) and the creation of a lot of condensation water on the fan (fig. 4).

The condensation kits 1 (81-BB-36601) and 2 (81-B-36602) can be ordered via the Dometic sales companies.



fig. 2

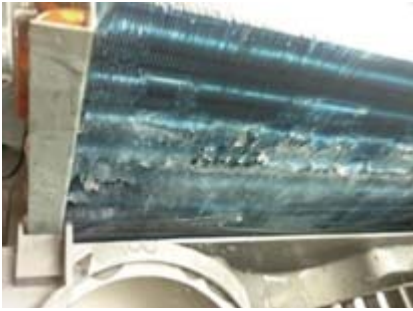


fig. 3



fig. 4

For air conditioners having water condensation on the air distribution box (fig. 6) it must be checked if the sealing (fig. 5) is installed. Otherwise add the sealing 386 3502-16/1.

Furthermore the condensation kit 2 (81-B-36602) must be installed.

The condensation kit 2 (81-B-36602) can be ordered via the Dometic sales companies.



fig. 5



fig. 6



While installation of the condensation kit 2 (81-B-36602) the position of the temperature probe must be changed and some isolations added (fig. 7-11).



fig. 7

old position
new position



fig. 8



fig. 9

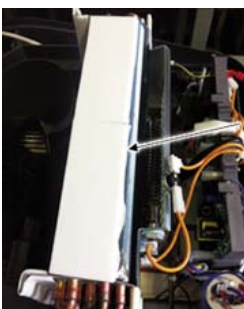


fig. 10



fig. 11