

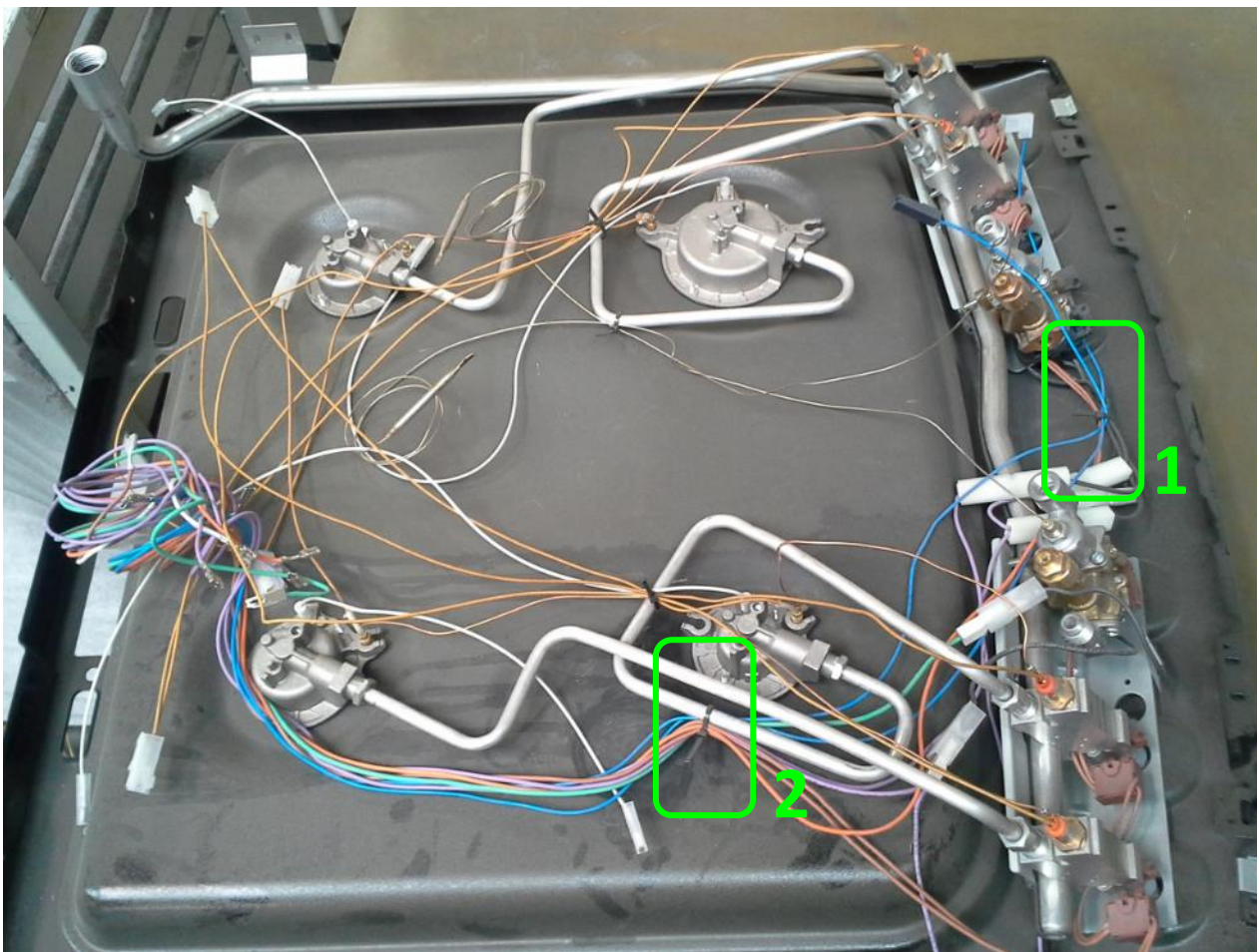
New fixing for electrical harness in gas hobs

**DESCRIPTION:**

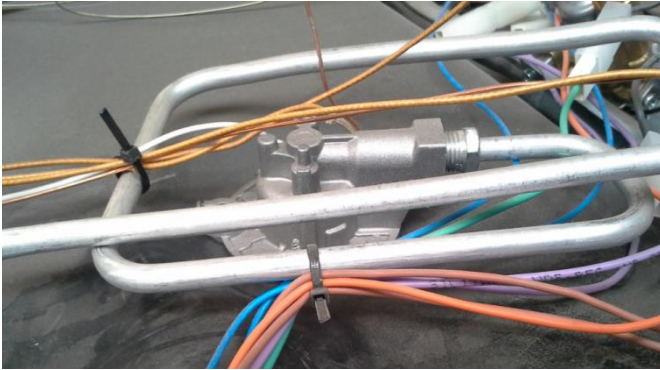
Additional fixing needs to be applied for electrical harnesses to avoid potential risk of short circuits.

**SOLUTION:**

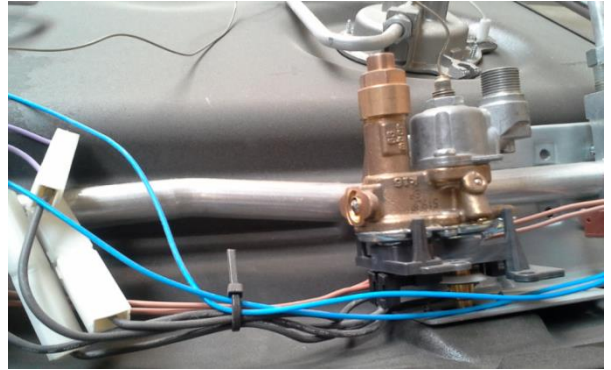
To prevent this, please fasten harnesses as it has been shown below.



Proper layout of the klixon wire.



1. Klixon wire (blue) bundle with ties.



2. Klixon wire (blue) bundle with ties.

**MODELS INVOLVED:**

All appliances with PNC numbers : 948905XXX

**REVISION:**

Revision	Date	Description	Author	Approved by - on
00	08/2015	Document Creation	Tomasz Hyży	Agnieszka Lompart