

CE DISASSEMBLING PROCESS



First step is to strain the control panel both side with a screwdriver as you can see it in the picture.

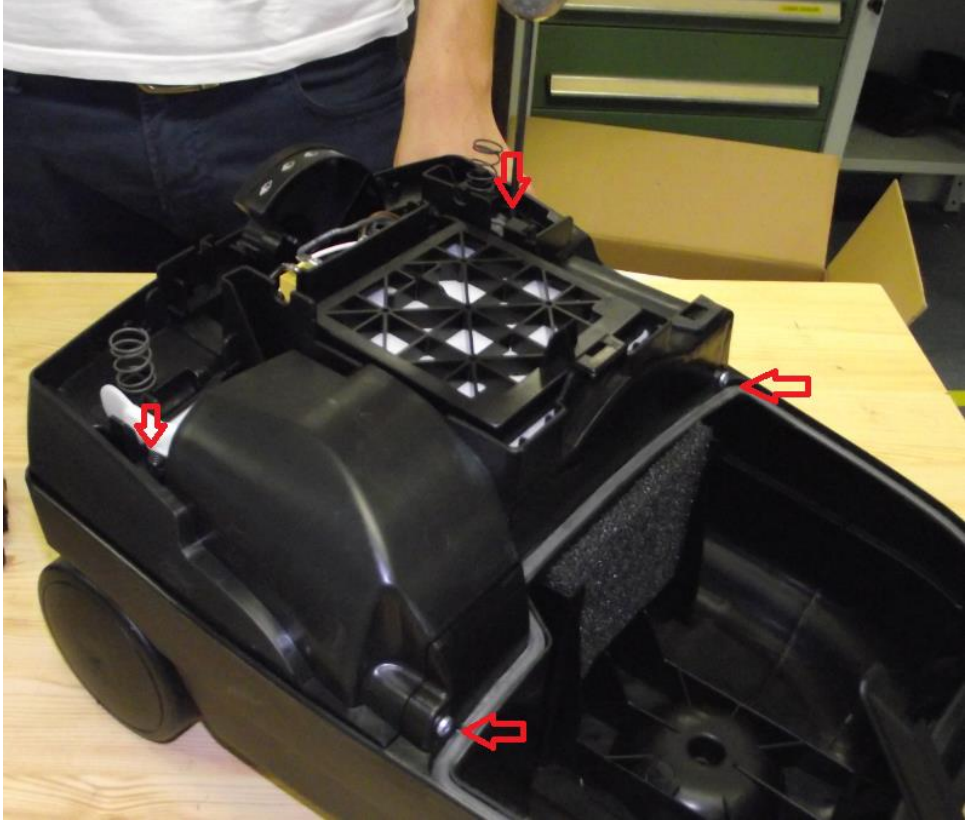


After this move open the dust bag cover to remove the control panel easily.

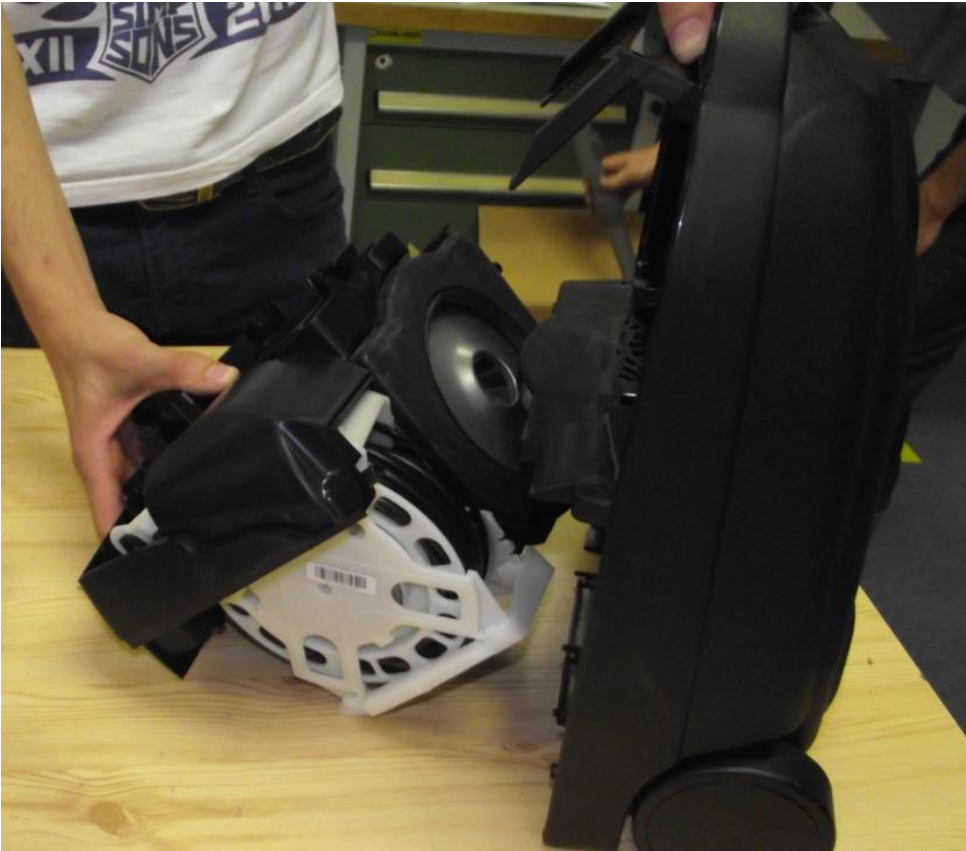




Remove four screws.



By holding the base carefully pull out the motor housing:

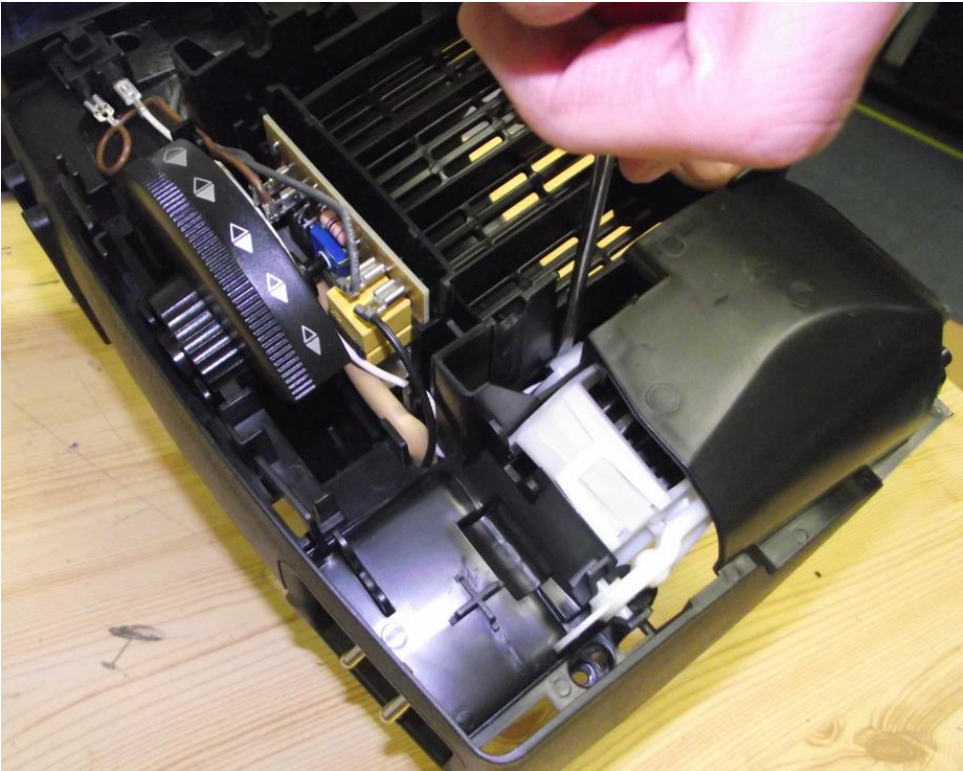


After this move the suspension ring and the motor can be easily removed (do not forget to disconnect the wires).



For removing the cord winder the following steps needs to be done:

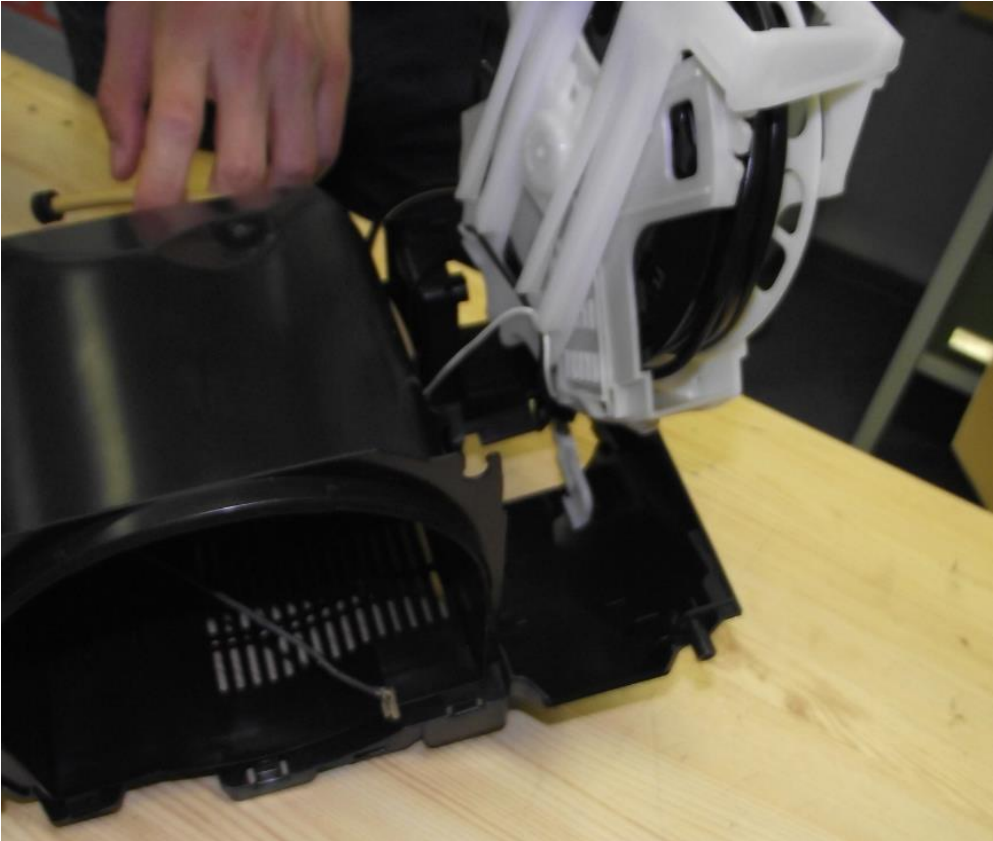
Crack out the rib:



Dislock the connetors:



Then pull out the cord winder:



At the end power regulator and PCB are easily removeable.

