

© ELECTROLUX HOME PRODUCTS  
Consumer Care - EMEA  
Training and Operations Support  
Technical Support

Publication  
number

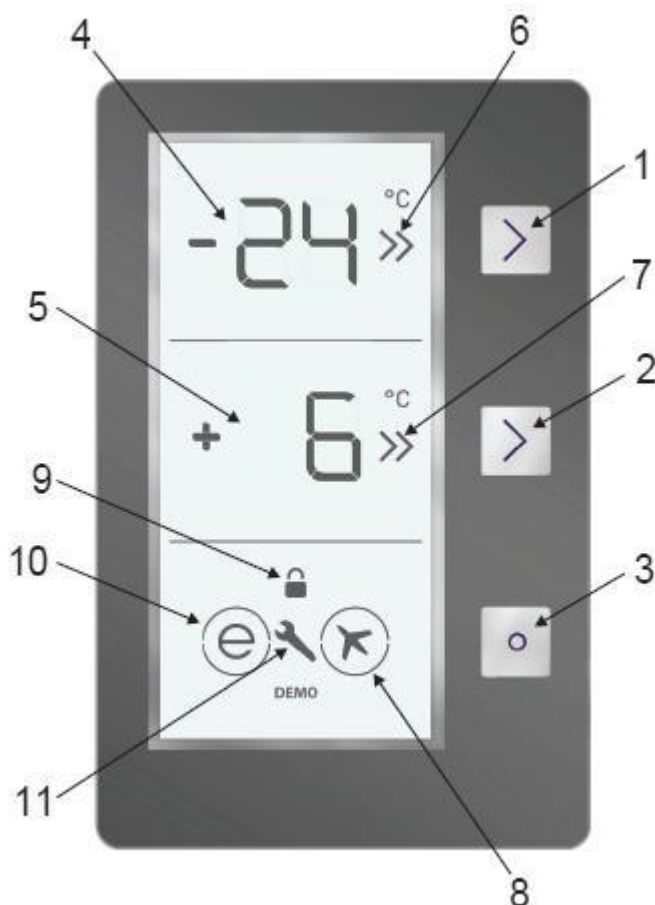
**599 78 93-72**

EN

**Edition: 05/2015 - Rev. 00**

**ZRT59220SA**

WHITE GOODS	<b>NO-FROST-ELECTRONIC</b>	CUSTOMER SUPPORT
	Display and Control Panel	



## Use of control panel

1. It enables the setting value of freezer to be modified and super freeze mode to be activated if desired. Freezer may be set to -16, -18, -20, -22, -24 °C, SF.
2. It enables the setting value of cooler to be modified and super cool mode to be activated if desired. Cooler maybe set to 8, 6, 5, 4, 2 °C, SC.
3. It enables the modes (economy, holiday...) to be activated if desired.
4. It is freezer set value screen.
5. It is cooler set value screen.
6. It is super freeze indicator
7. It is super cooling indicator
8. It is holiday mode symbol
9. It is child-lock symbol
10. It is economy mode symbol
11. It is alarm symbol

WHITE GOODS	<b>NO-FROST-ELECTRONIC</b>	CUSTOMER SUPPORT
	Display and Control Panel	

### Super Freeze Mode

#### How would it be used?

- Press freezer set button until SF letters will be seen on the screen. Buzzer will sound beep beep. Mode will be set.
- Freezer temperature segment will show "SF".

#### During this mode ;

- Temperature of cooler and super cool mode may be adjusted. In this case super freeze mode continues.
- Economy and Holiday mode can not be selected.
- Super freeze mode can be cancelled by the same operation of selecting.



#### Note:

- Maximum amount of fresh food (in kilograms) to be frozen within 24 hours is shown on the appliance label.
- For optimal appliance performance in maximum freezer capacity, set the appliance to active SF mode 3 hours before you put the fresh food into the freezer.
- At the end of this period, the fridge will release an audible alarm notifying that it is ready.

*Super Freeze mode will be automatically cancelled after 24 hours or when freezer sensor temperature drops beneath -32 °C.*

### Super Cool Mode

#### How would it be used?

- Press cooler set button until SC letters will be seen on the screen. Buzzer will sound beep beep. Mode will be set.
- Cooler temperature segment will show "SC".

#### During this mode:

- Temperature of freezer and super freeze mode may be adjusted. In this case super cool mode continues.
- Economy and Holiday mode can not be selected.
- Super cool mode can be cancelled by the same operation of selecting.



**Note:** *Super Cool mode will be automatically cancelled after 4 or 6 hours depending on the environmental temperature or when the refrigerator sensor reaches a sufficiently low temperature.*

WHITE GOODS	<b>NO-FROST-ELECTRONIC</b>	CUSTOMER SUPPORT
	<b>Display and Control Panel</b>	

### **Economy Mode**

#### **How would it be used?**

- Push "mode button" till a circle appears around economy symbol.
- If no pressed any button for 1 sec. Mode will be set. Circle will blink 3 times. When mode is set, buzzer will sound beep beep.
- Freezer and refrigerator temperature segments will show "E".
- Circle of economy symbol and E will light till mode finishes.

#### **During this mode;**

- Freezer may be adjusted. When economy mode will be cancelled, the selected setting values will proceed.
  - Cooler may be adjusted. When economy mode will be cancelled, the selected setting values will proceed.
  - Super cool and super freeze modes can be selected.
- Economy mode is automatically cancelled and the selected mode is activated.

- Holiday mode can be selected after cancelling the economy mode. Then the selected mode is activated.
- To cancel, you will just need to press on mode button.



### **Holiday Mode**

#### **How would it be used?**

- Push "mode button" till a circle appears around plane symbol.
- If no pressed any button for 1 sec. Mode will be set. Circle will blink 3 times. When mode is set, buzzer will sound beep beep.
- Freezer temperature segment will show "H".
- Circle of plane symbol and H will light till mode finishes.

#### **During this mode;**

- Freezer may be adjusted. When holiday mode will be cancelled, the selected setting values will proceed.
- Cooler may be adjusted. When holiday mode will be cancelled, the selected setting values will proceed.
- Super cool and super freeze modes can be selected.

Holiday mode is automatically cancelled and the selected mode is activated.

- Economy mode can be selected after cancelling the holiday mode. Then the selected mode is activated.
- To cancel, you will just need to press on mode button.
- Holiday mode should be activated when the cooler will not be used for a long period of time.

By doing this, you will be using your fridge in a more economic manner. The cooler must be completely emptied before vacation mode is activated.



WHITE GOODS	<b>NO-FROST-ELECTRONIC</b>	CUSTOMER SUPPORT
	<b>Display and Control Panel</b>	

### Drink Cool Mode

#### When would it be used?

- This mode is used to cool the drinks within adjustable time.

#### How would it be used?

- Press freezer button for 3 seconds.
- dc letters will be seen on freezer screen and the 05 blinks on cool e
- Press cooler button to adjust the time (05 - 10 - 15 - 20 - 25 - 30 minutes).
- When you select the time the numbers will blink 3 times on screen and sound beep beep.
- If no button is pressed within 2 seconds the time will be set.
- The countdown starts from the adjusted time minute by minute.
- The rest time blinks on the screen.
- To cancel this mode press freezer set button for 3 seconds.



**Note:** You must adjust the time according to the temperature of the bottles before you put them in.

- For example, you can set the time as “5 minutes” in the beginning. After this time, if the cooling is insufficient, you might set another 5 or 10 minutes.
- While using this mode, you must check the temperature of the bottles regularly. When the bottles are cool enough, you must take them out of the appliance.
- In the event that you leave the bottles in when the Drink Cool mode is on, they might explode.

### Screen Saver Mode

#### How to use?

- This mode will be activated when you press on mode button for 5 seconds.
- If pressed on no button in 5 seconds when he mode is active, lights of the control panel will go off.
- If you press any button when lights of control panel are off, the current settings will appear on the screen, and then you can maket he adjustment as you want. If you neither cancel screen saver mode nor press on any button in 5 seconds, the control panel will go off again.
- To cancel screen saver mode press on mode button for 5 seconds again.
- When screen saver mode is active you can also activate child lock.
- If you do not press any button for 5 seconds after activating child lock, the lights of the control panel will go off. Then, you can view the previous settings and that child lock symbol is active when you pres any button, and you can cancel child lock as is described in the instruction of that mode.



WHITE GOODS	<b>NO-FROST-ELECTRONIC</b>	CUSTOMER SUPPORT
	Display and Control Panel	

### ***Function of Child Lock***

#### **When would it be used?**

• To prevent children from playing with the buttons and changing the settings you have made, child lock is available in the appliance.

#### **Activating Child Lock**

• Press on Freezer (F) and Cooler (R) buttons simultaneously for 5 seconds.

#### **Deactivating Child Lock**

• Press on Freezer (F) and Cooler (R) buttons simultaneously for 5 seconds.

**Note:** Child lock will also be deactivated if electricity is interrupted or the fridge is unplugged.

### ***Demo Mode***

#### **Entering Demo mode:**

- Firstly the power is on , secondly within 1 minute user will push mode & freezer button at the same time , Then appliance will go on “demo function” and Demo Symbol will light during the mode.
- All functions can be adjusted to show how they are adjusted to the customer.
- During the demo mode to show the alarm symbol, at the 3th. pushing of the mode button SR alarm symbol and the “SR word” on the 7-segment will be active.

#### **Canceling Demo mode:**

For cancelling; Same operation will be used. If user will push mode & freezer button at the same time, demo function will be cancelled.

When appliance is Demo mode; if plug is removed or there is an electricity breakdown; demo mode will continue with current settings after user plug into or electricity breakdown finish.

WHITE GOODS	<b>NO-FROST-ELECTRONIC</b>	<b>CUSTOMER SUPPORT</b>
	<b>Temperature Settings</b>	

### Freezer Temperature Settings



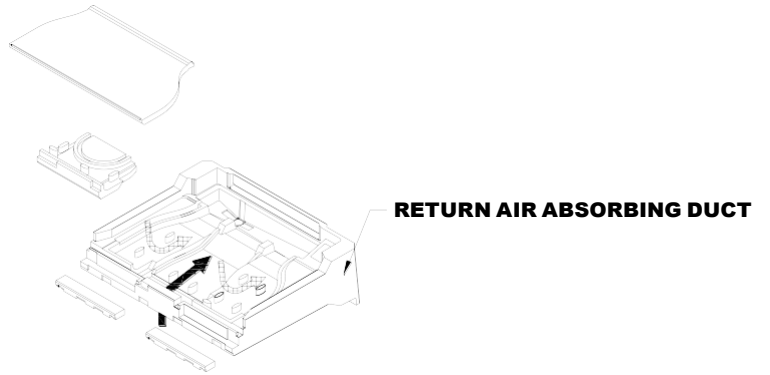
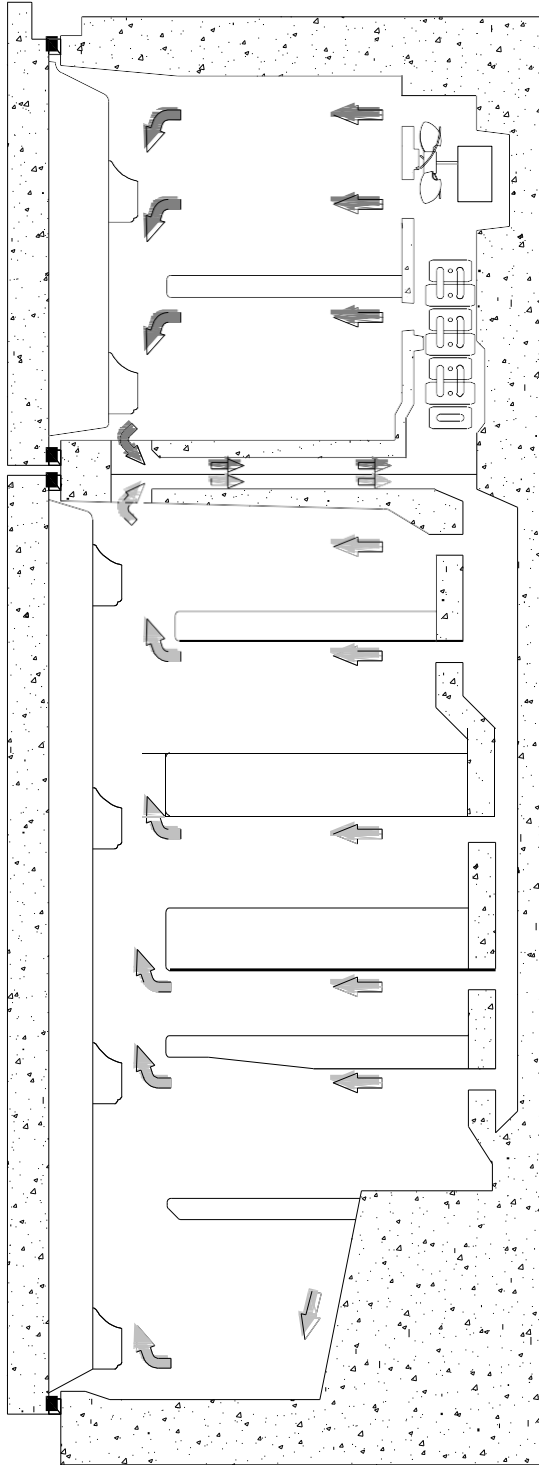
- Initial temperature value for Freezer Setting Indicator is -18°C.
- Press freezer set button once.
- When you first push this button, the last set value will blink on screen.
- Whenever you press on this button, lower temperature will be set. (-16°C, -18°C, -20°C, -22°C, -24°C , superfreeze)
- When you push the freezer set button until superfreeze symbol appears on the Freezer Setting Indicator, and if you do not push any button in 1 second Super Freeze will flash.
- If you continue to press, it will restart from -16°C.
- The temperature value selected before Holiday Mode, Super Freeze Mode, Super Cool Mode or Economy Mode is activated will remain the same when the mode is over or cancelled. The appliance continues to operate with this temperature value.

### Cooler Temperature Settings

- Initial temperature value for Cooler Setting Indicator is +4 °C.
- Press cooler button once.
- When you first push this button, the last value appears on the setting indicator of the cooler.
- Whenever you press on this button, lower temperature will be set. (+8°C, +6°C, +5°C, +4°C, +2°C, supercool)
- When you push the cooler set button until supercool symbol appears on the Cooler Setting Indicator, and if you do not push any button in 1 seconds Super Cool will flash.
- If you continue to press, it will restart from +8°C.
- The temperature value selected before Holiday Mode, Super Freeze Mode, Super Cool Mode or Economy Mode is activated will remain the same when the mode is over or cancelled. The appliance continues to operate with this temperature value.



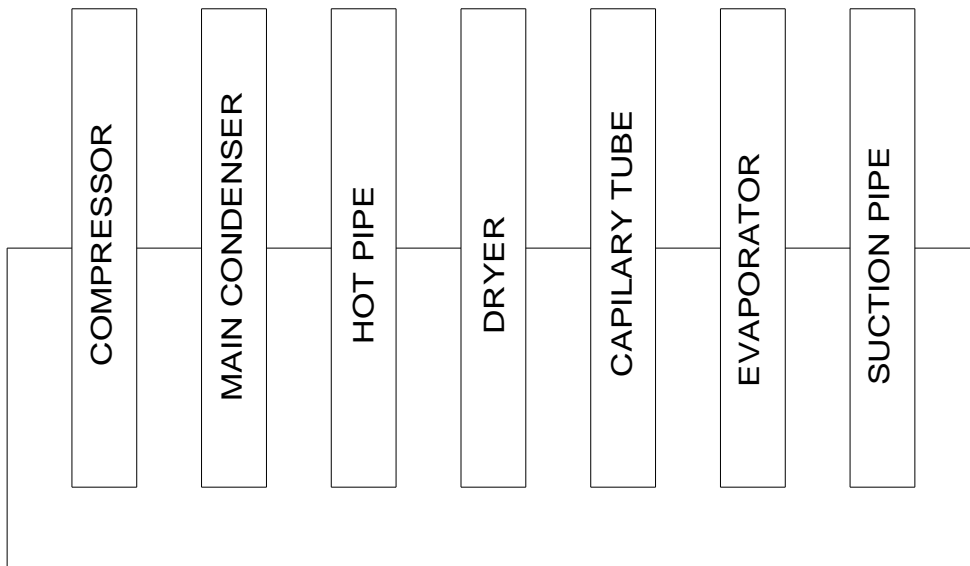
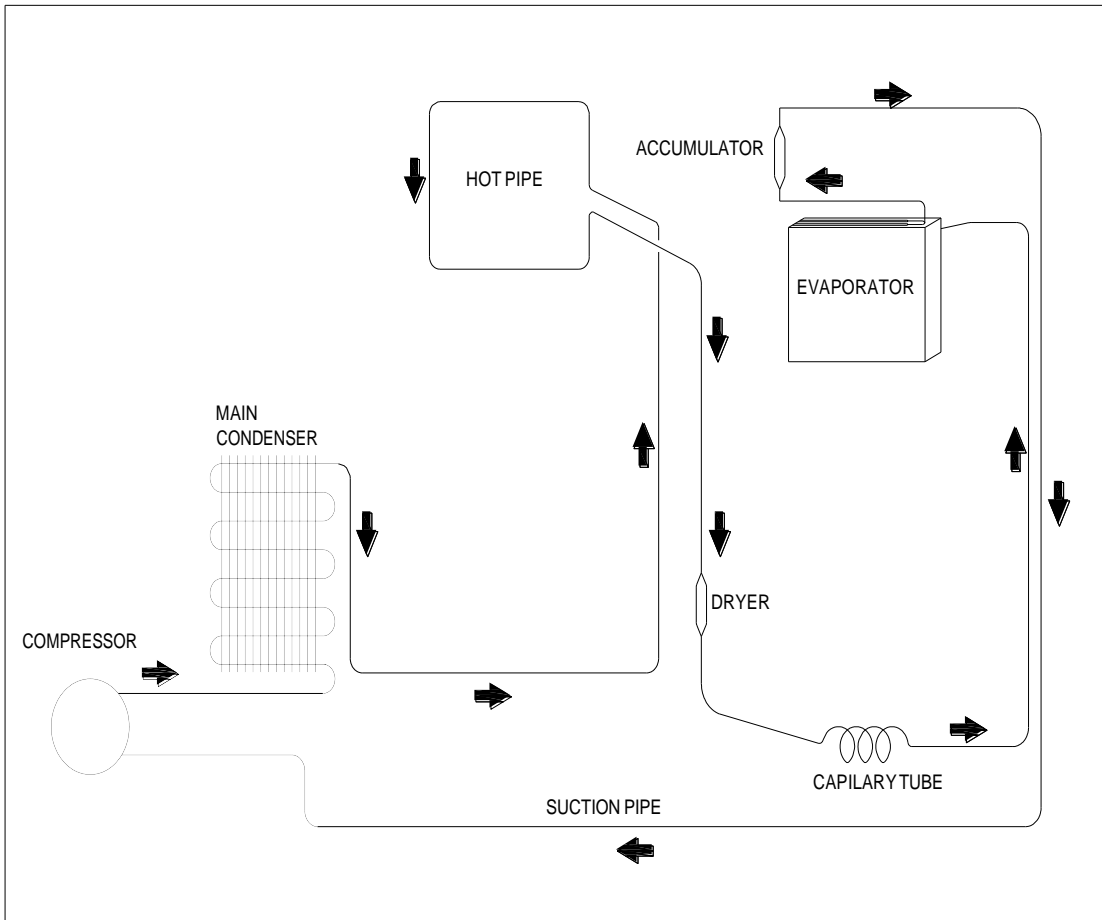
Freezer	Refrigerator	Remarks
-18 C	4 C	For regular use and best performance.
-20 C,-22 C or -24 C	4 C	Recommended when environmental temperature exceeds 30 C.
SF	4 C	Must be used when you wish to freeze food in a short period of time.
-18 C, -20 C,-22 C or -24 C	2 C	These temperature settings must be used when the environmental temperature is high or if you think the refrigerator compartment is not cool enough because the door is being opened frequently.
-18 C, -20 C,-22 C or -24 C	SC	Must be used when the refrigerator compartment is overloaded with food or when there is food to be cooled instantly.



 FREEZER SECTION RETURN AIR  
 REFRIGERATOR SECTION RETURN AIR

**NOTE THAT: RETURN AIRS,  
WHICH COMES FROM FREEZER  
AND REFRIGERATOR SECTION  
DO NOT MIX EACH OTHER**





<b>WHITE GOODS</b>	<b>NO-FROST-ELECTRONIC</b>	<b>CUSTOMER SUPPORT</b>
	<b>Service Mode</b>	

Push FRE button continuously. During this time, open and close freezer door for 3 times. Appliance will enter service mode 3 sec. later.

**During service mode:**

- Buzzer will sound beep for 0.1 sec. each 5 sec. during service mode.
- Bars will show error codes (service mode reaction). Symbols will be OFF. Only SR symbol will blink during Service Mode If there is no error , bars will show nothing except of SR symbol. And if error is disabled during service mode, error codes will be disabled in bars.
- If service man pushes Drink Cool button he will be able to choose functions listed below. Bar segments will not show errors as functions are working. Functions will be set if service man does not push any other button for 1 sec.
- Service man has 4 functions to select. First 4 push of Drink Cool button will activate symbols. Service man will cancel mode selection if he stops pushing button on the 5th push.

**1. Push Starting program**

Economy symbol in display will blink during mode. Freezer bars will light as components are checked.  
 “5” will light when R&Su heater is ON  
 “4” will light when Middle Bracket heater is ON  
 “3” will light when defrost heater is ON  
 “2” will light when evap fan motor is ON  
 “1” will light , compressor is ON

As starting program finishes, first symbol will be OFF. Appliance will return to initial service mode reaction.

**2. Push Forced defrost and forced canceling of defrost**

Holiday symbol will blink during mode. Defrosting mode will start from Step 3. Mode can be canceled manually or automatically.

Manual canceling will be done by pushing REF button. Symbol will be OFF if defrost is canceled manually. Appliance will return to initial Service mode reaction. If manual canceling of this function is not performed in 30 min. Service mode will be canceled. Appliance will check if defrost is finished in this 30min. If YES, appliance will go on from previous set values. But if defrost is not finished , appliance will go on defrost till it finishes and then go on from previous set values.

**3. Push Forced opening and closing of damper motor**

11A and 11B will blink together. As function is selected damper will be opened if it was closed; it will close if it was opened.

If service man does not reset the function, damper will return to initial condition (open or close) after 5 min. Appliance will return to initial service mode reaction

Manual canceling will be done by pushing REF button. Symbol will be OFF as damper motor return to initial condition. Appliance will return to initial service mode reaction

WHITE GOODS	<b>NO-FROST-ELECTRONIC</b>	<b>CUSTOMER SUPPORT</b>
	<b>Service Mode</b>	

#### 4. Push Displaying actual temperatures in compartments

12A and 12B will light alternatively like Super Cooling during mode.

Freezer number segment will show F and refrigerator number segment will show F sensor actual temp.

If service man pushes FRE button;

Freezer number segment will show R and refrigerator number segment will show R sensor actual temp.

If service man pushes FRE button again;

Freezer number segment will show D and refrigerator number segment will show D sensor actual temp.

If service man does not push FRE button in 5 min, mode will be canceled. Appliance will return to initial service mode reaction

If service man pushes REF button again, function will be canceled.

Appliance will return to initial service mode reaction.

#### 5. Push Empty. No function is set.

**To cancel Service Mode** : You can use same method as entering the Service Mode.

Push “F” button continuously. During this time, open and close freezer or refrigerator door for 3 times. Also if the service man doesn’t push any button for 30 min. at Service Mode it will be canceled automatically.

<b>WHITE GOODS</b>	<b>NO-FROST-ELECTRONIC</b>	<b>CUSTOMER SUPPORT</b>
	<b>CONTROL FUNCTIONS</b>	

**Control functions cannot be seen by customer. They can be seen only at service mode.**

### **CO 01, Freezer sensor > -8 °C**

It means that freezer compartment is not cold enough. Some reasons for this failure are as written below;

- When you first switch on the appliance,
- When too much fresh food are placed in the freezer compartment,
- When the inlet cold air duct is covered by foods,
- When the Freezer door continuously open for long time,
- When the electricity is off for a long time of period.

### **CO 02, Refrigerator sensor > 20 °C**

It means that although the temperature in the freezer section is colder than  $-10^{\circ}\text{C}$ , the refrigerator compartment is not cold enough. Some of the reasons for this failure are as written below;

- When the duct damper couldn't open,
- When too much fresh food are placed in the refrigerator compartment,
- When the refrigerator door continuously open for long time
- When you first switch on the appliance,
- When the electricity is off for a long time of period.

### **CO 03, Refrigerator sensor < -8 °C**

It means that refrigerator compartment is too cold. ( $< -8^{\circ}\text{C}$  ). Some of the reasons for this failure are as written below;

- When the duct damper couldn't close

### **CO 04, Freezer Sensor > -8 °C and Ref. Sensor > 20 °C**

You will see this failure when you first start and when the electricity is off for a long time of period. the appliance. It will be disappeared after the compartments reach to the temperatures below to the above mentioned temperatures.

WHITE GOODS	<b>NO-FROST-ELECTRONIC</b>	<b>CUSTOMER SUPPORT</b>
	<b>USER AND SERVICE MODE ERROR MESSAGES</b>	

DEFECT TYPE	MEANING	CAUSE	ACTIONS TO BE TAKEN
<b>SR</b>	Fault warnings	It appears when one or several parts of the fridge fail or a problem occurs on the cooling system.	Contact the nearest authorized technical service as soon as possible.
<b>LO - PO</b>	Low voltage	Refrigerator switches to standby condition when the voltage supply is lower than 170 Volts.	This feature prevents damage to the compressor due to low voltage. Fridge will start operating automatically when the supply voltage reaches the desired level.

SENSOR	TEMPERATURE	USER MODE REACTION	SERVICE MODE REACTION
(1) Freezer	> +50 °C or <-50 °C (sensor is short or open)	<b>Display SR (blinks) in Freezer number segment,  SR Symbol blinks  And  Set refrigerator segment OFF till error is finished.</b>	Display FE 01
(2) Refrigerator	> +50 °C veyá <-50 °C (sensor is short or open)		Display FE 02
(3) Defrost	Short (< 100 Ω) or <-50 °C		Display FE 03
(4) AT sensor	Short or < -30 °C		Display FE 04
Breakdown of (1) and (2)			Display FF 12
Breakdown of (1) and (3)			Display FF 13
Breakdown of (1) and (4)			Display FF 14
Breakdown of (2) and (3)			Display FF 23
Breakdown of (2) and (4)			Display FF 24
Breakdown of (3) and (4)			Display FF 34
Breakdown of (2) and (3) and (4)			Display FH 01
Breakdown of (1) and (3) and (4)			Display FH 02
Breakdown of (1) and (2) and (4)			Display FH 03
Breakdown of (1) and (2) and (3)			Display FH 04
Breakdown of all sensors			Display FU 00

WHITE GOODS	<b>NO-FROST-ELECTRONIC</b>	<b>CUSTOMER SUPPORT</b>
	<b>USER AND SERVICE MODE ERROR MESSAGES</b>	

### Component defect on display

DEFECT TYPE	DETAILS	USER MODE REACTION	SERVICE MODE REACTION
Compressor Defect	Defrost sensor temp > -10°C (D sensor temp.unchanges for 10 min.continuous compressor run)	<b>Display SR&amp; SR Symbol (blinks) in freezer number segment and set refrigerator segment OFF till</b>	Display FO 05
Defrost Heater Defect	Defrost sensor < 0°C		Display FO 06

### Low voltage error on display

DEFECT TYPE	DETAILS	USER MODE REACTION	SERVICE MODE REACTION
Low voltage	Power supply < 170	Freezer number segment shows LO Refrigerator number segment PO	Display LO PO

### Cooling error on display

**Note:** To prevent the wrong alarms, this alarm status is disabled on following conditions:

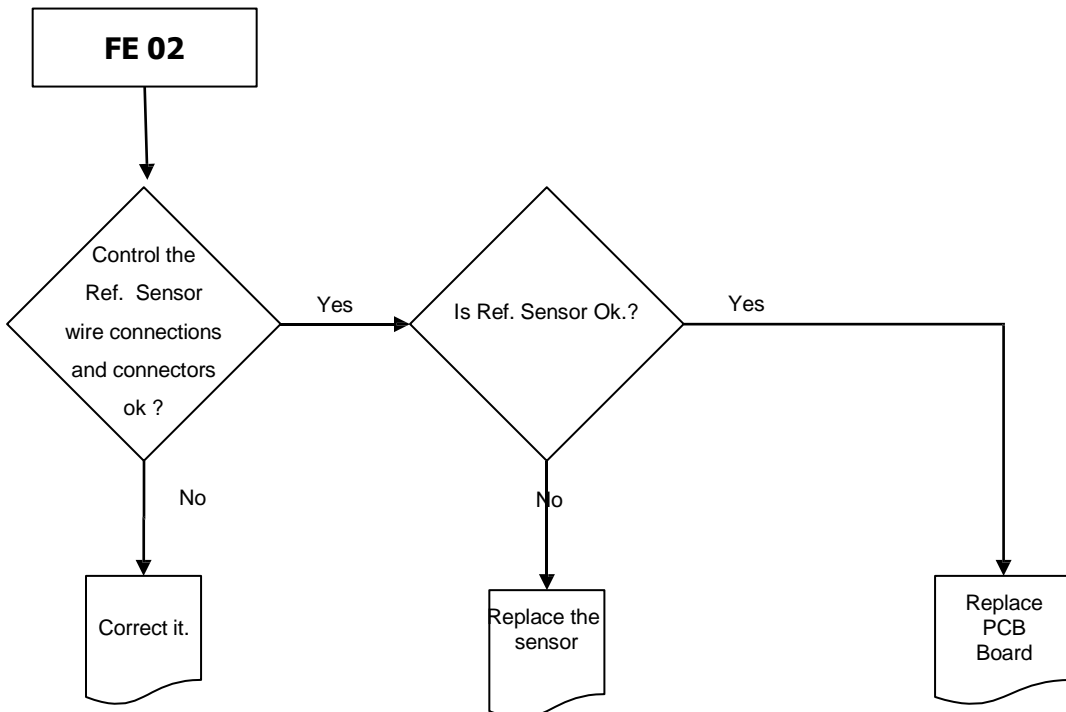
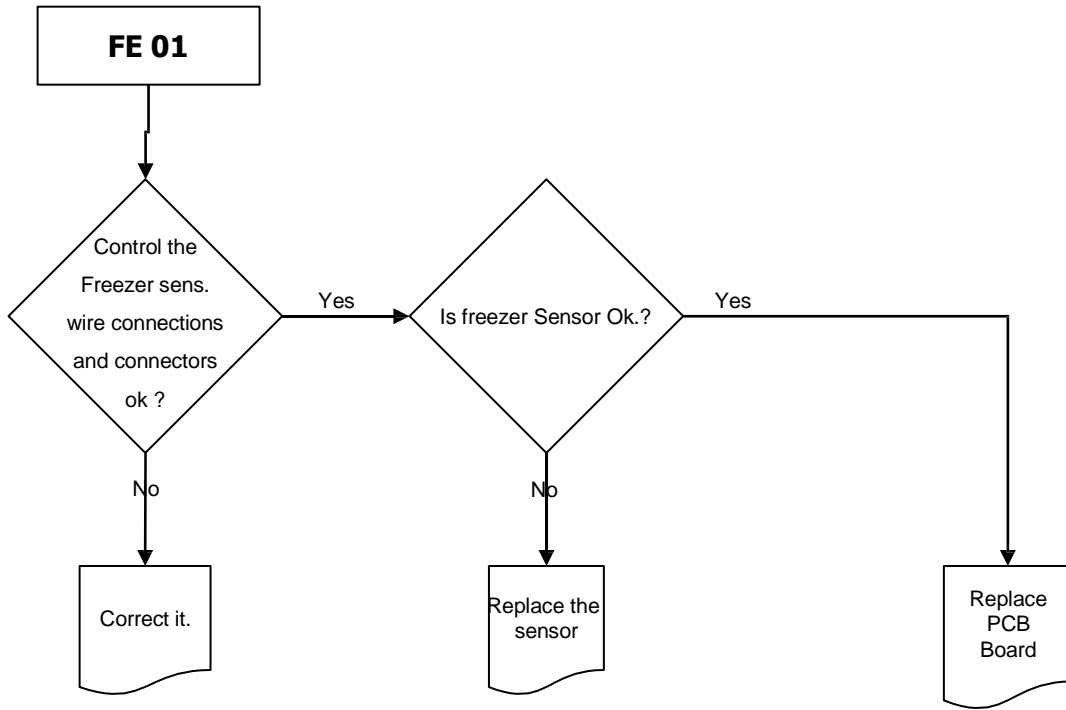
- During the first 6 hours after the product was firstly connected.
- During the defrost period
- During the first two hours after a defrost
- During the first 2 hours that one of the doors was open.

DEFECT TYPE	DETAILS	USER MODE REACTION	SERVICE MODE REACTION
Freezer sensor > -10°C	Freezer compartment is not cool enough	Freezer number segment LF blinks till error finishes	Display CO 01
Ref. sensor > +10°C and if Holiday mode is not active	Refrigerator compartment is warm	Refrigerator number segment LC blinks till error finishes	Display CO 02
Ref. sensor < -5°C	Refrigerator compartment is so cool	Refrigerator number segment HC blinks till error finishes	Display CO 03
F sensor > -10°C and R sensor >15°C and if Holiday mode is not active	Freezer and Refrigerator compartment both are not cool enough	Freezer number segment LF blinks and Ref. number segment LC blinks	Display CO 04

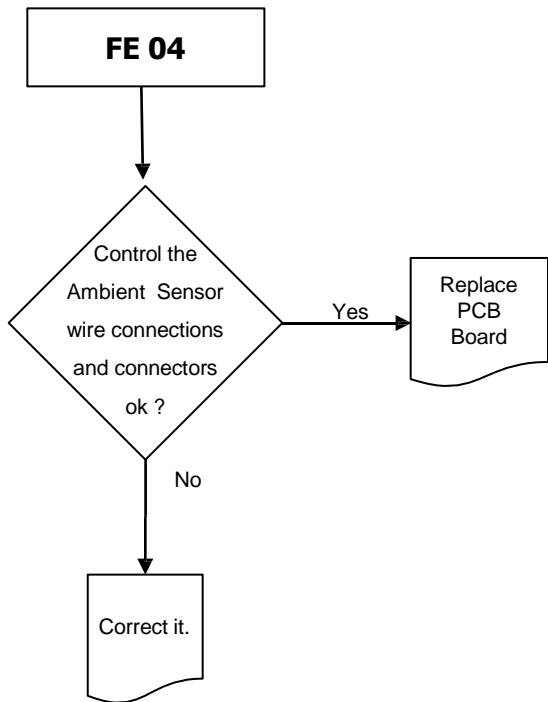
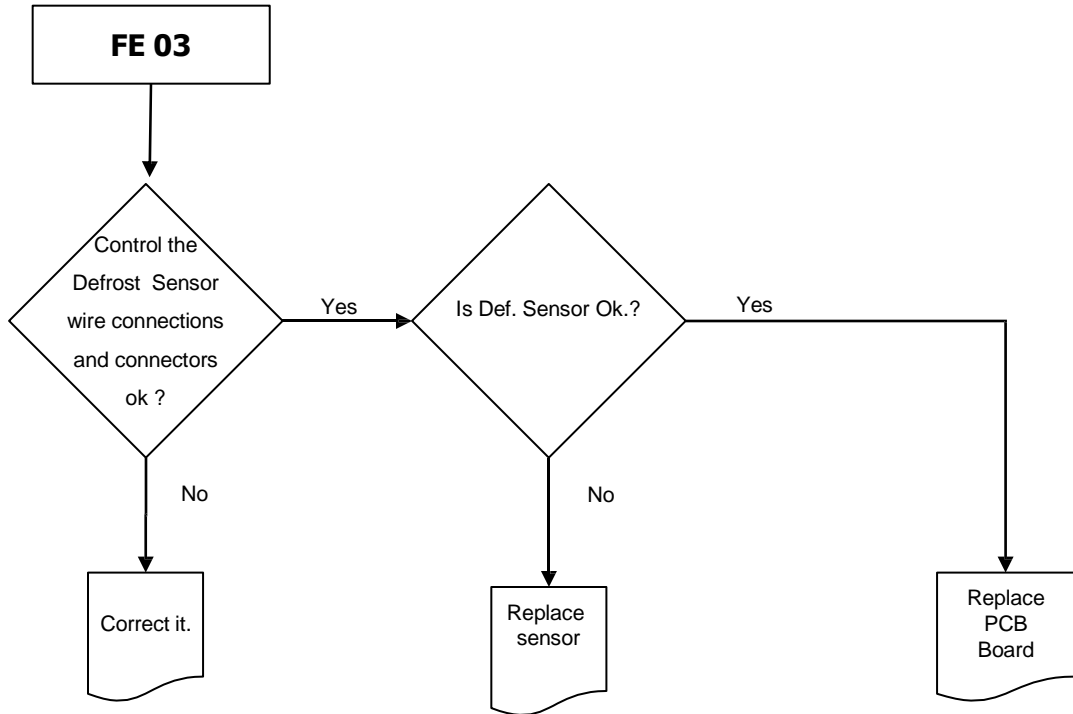
<b>WHITE GOODS</b>	<b>NO-FROST-ELECTRONIC</b>	<b>CUSTOMER SUPPORT</b>
	<b>USER AND SERVICE MODE ERROR MESSAGES</b>	

### PRIORITY OF ERROR ON DISPLAY

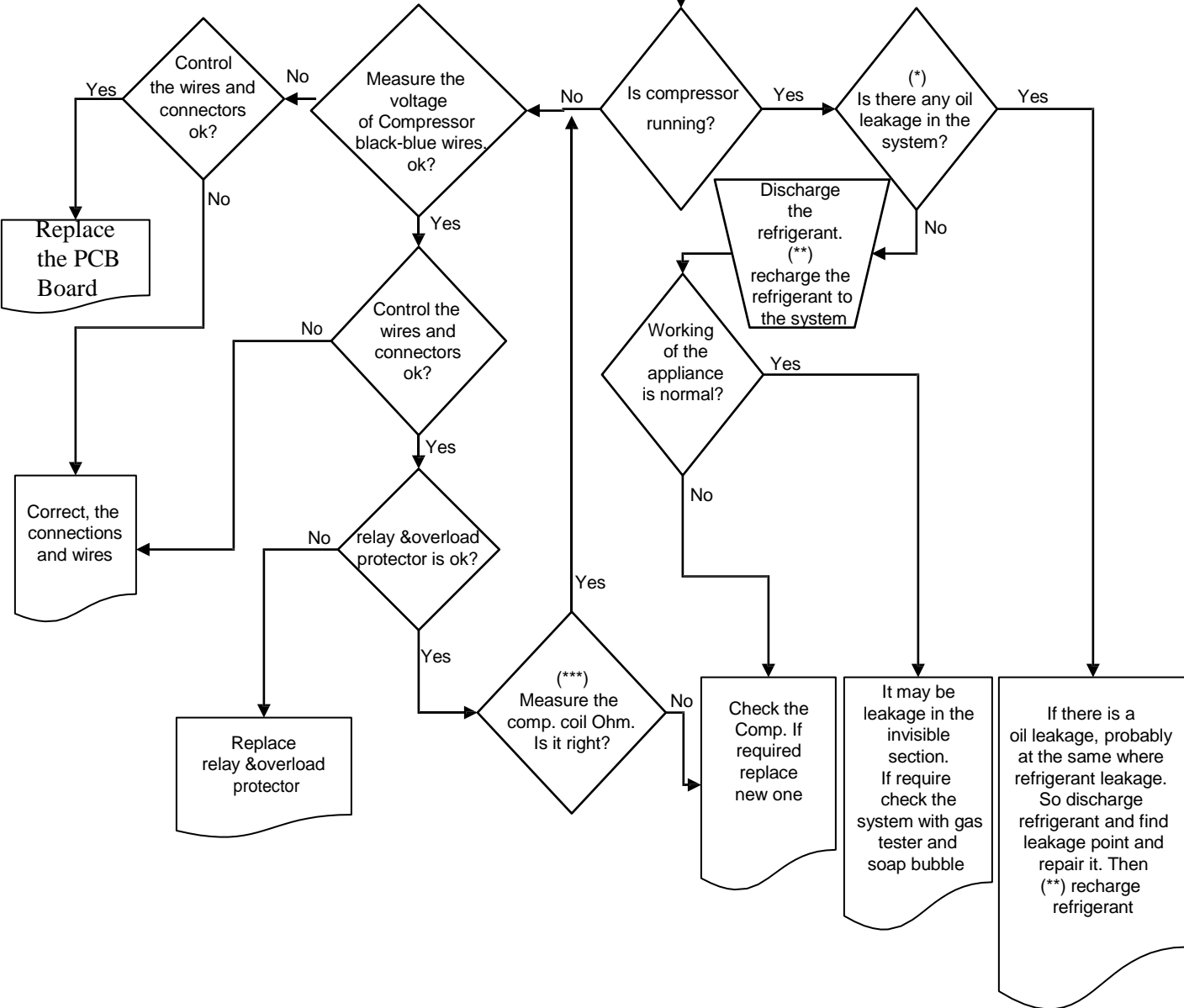
	<b>USER MODE REACTION</b>	<b>SERVICE MODE REACTION</b>
Compressor Defect	SR	FO 05
Defrost Heater Defect	SR	FO 06
Sensor Defect (Short-Open)	SR	F* **
F sensor>-8°C and R sensor>20°C	LF and LC	CO 04
F sensor>-8°C	LF	CO 01
R sensor>20°C	LC	CO 02
R sensor<-8°C	HC	CO 03







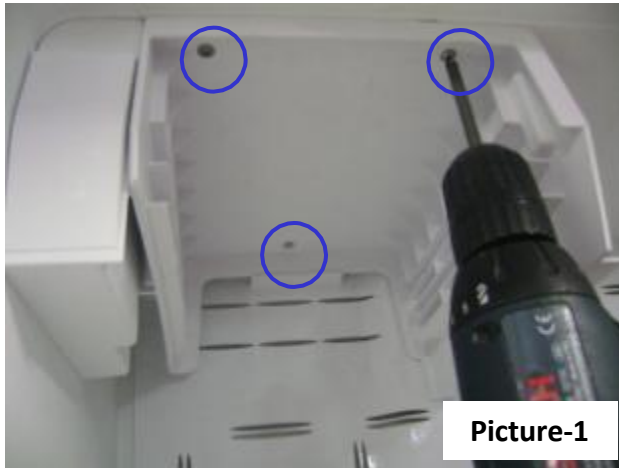
**FO 05**  
**Insufficient cooling**



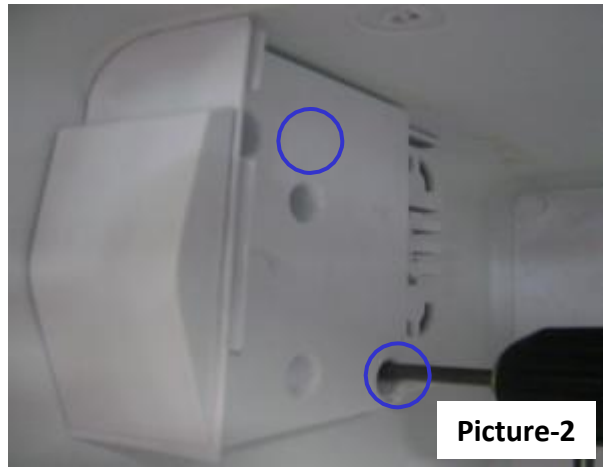
(\*) Check all of the visible pipes and welding points against oil leakage  
 (\*\*) Before recharging the refrigerant to the system; Dryer must be replaced and at least 30 minutes vacuum must be done  
 (\*\*\*) Comp. Main coil and auxiliary coil are 10 Ω and 22 Ω respectively (At 25 °C ambient temp.)

WHITE GOODS	NO-FROST-ELECTRONIC	CUSTOMER SUPPORT
	FREEZER COMPARTMENT	

### Replacement of Freezer Sensor



Picture-1

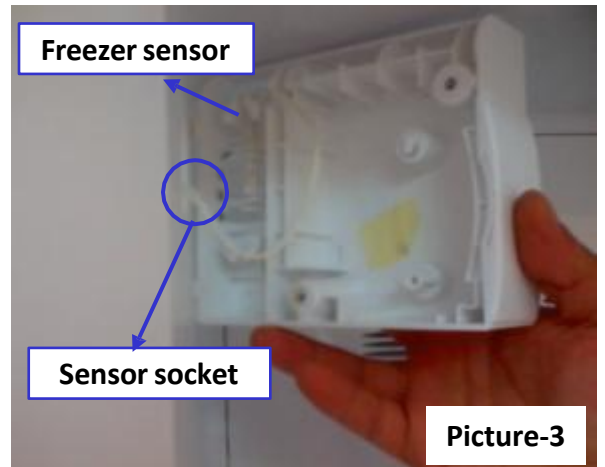


Picture-2

Remove the ice matic group.  
Then unscrew the three screws which are fixing the ice-matic holder and remove it. (Picture-1)

Unscrew the two screws which are fixing the thermostat cover and remove it by pulling to the front (Picture-2)

Disconnect the sensor connector and take out the Freezer sensor. (Picture-3)



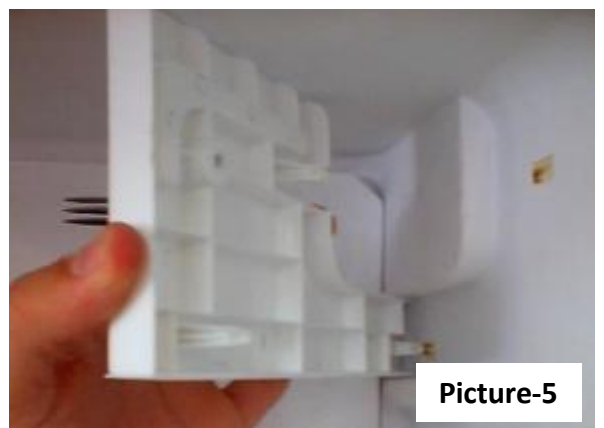
Picture-3

### Dismantle of Freezer Partition



Picture-4

Unscrew the freezer partition screws (Picture4)



Picture-5

Remove the freezer partition by pulling to the front. (Picture-5)

WHITE GOODS	NO-FROST-ELECTRONIC	CUSTOMER SUPPORT
	FREEZER COMPARTMENT	

### Replacement of Freezer MultiFlow Cover



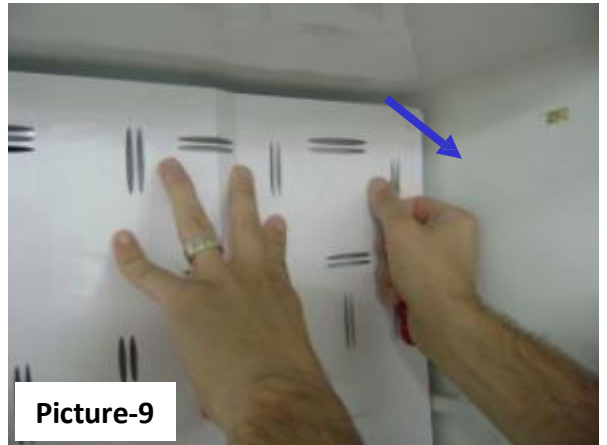
Picture-6



Picture-7



Picture-8

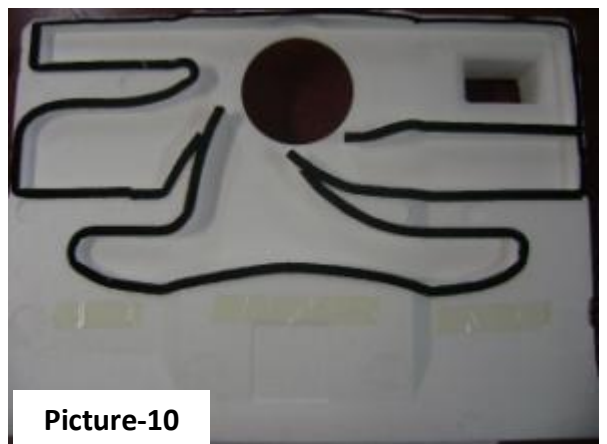


Picture-9

Remove the drain pan plug. (Picture-6 / Picture-7)

Unscrew the two fixing screws on freezer multiflow cover (Picture-8)

Starting from nails downside to upperside, compress the nails to inside and remove it. Take out the cover carefully (Picture-9)



Picture-10

**NOTE:** There are nails and isolation sponges on the back side of the cover.

While dismantling of the cover, be careful not to damage them. (Picture-10)

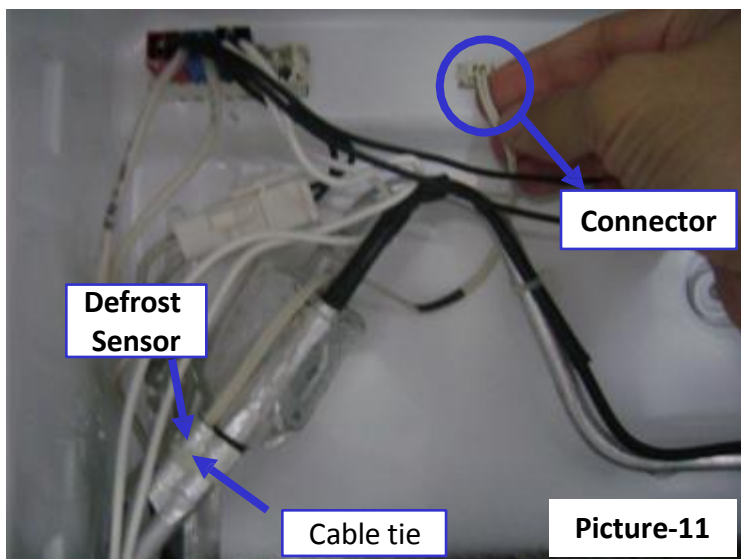
WHITE GOODS	NO-FROST-ELECTRONIC	CUSTOMER SUPPORT
	FREEZER COMPARTMENT	

## Replacement of Defrost Sensor

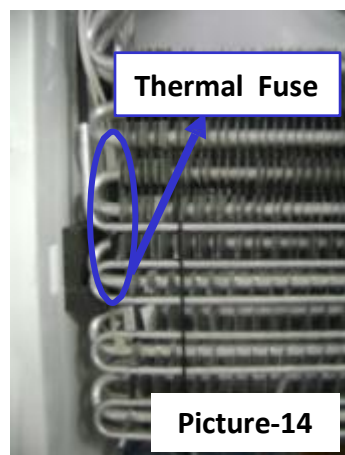
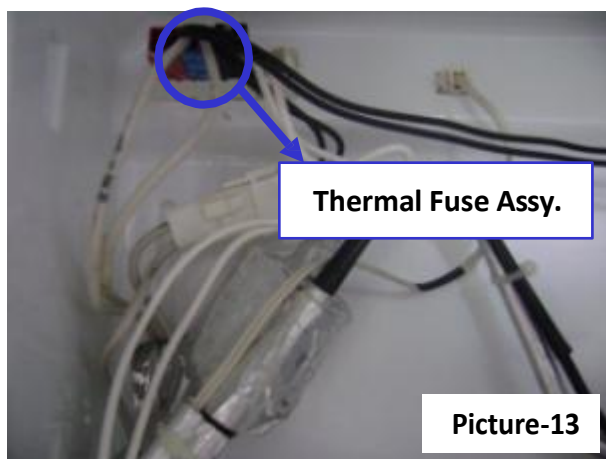
Cut the cable tie. Remove the sensor connector. You can take out the defrost sensor by removing the aluminum tape on it(Picture-11)

After removing the tapes, take it out with defrost sensor connector.

**NOTE:** After fixing the defrost sensor, tie down the defrost sensor and the thermal fuse assy with cable tie.



## Replacement of Thermal Fuse Assy.



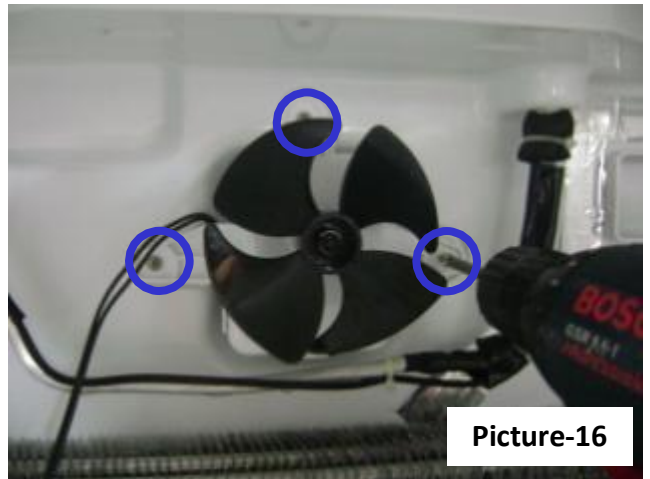
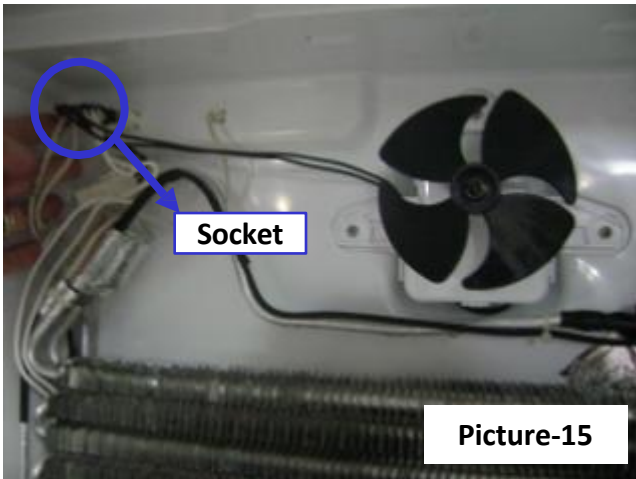
First remove the putty on the connectors. (Picture-12)  
(Put it back after the replacement)

Disconnect to thermal fuse connectors. (Picture-13)  
(Black socket)

Cut off the cable tie. Remove the thermal fuse by pulling which mounted on the left side of the evaporator. (Picture-14)

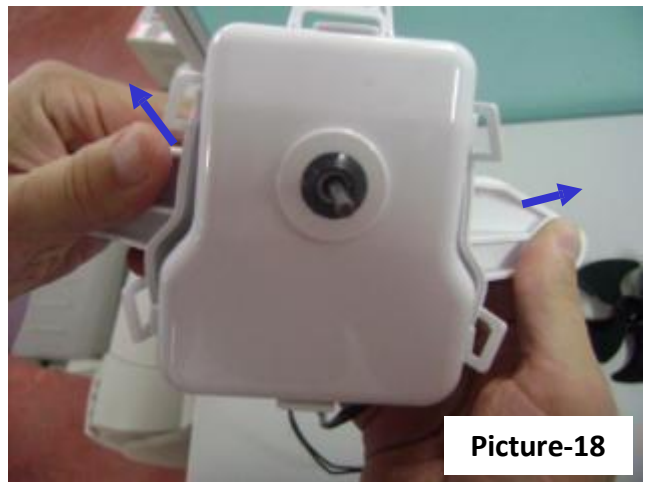
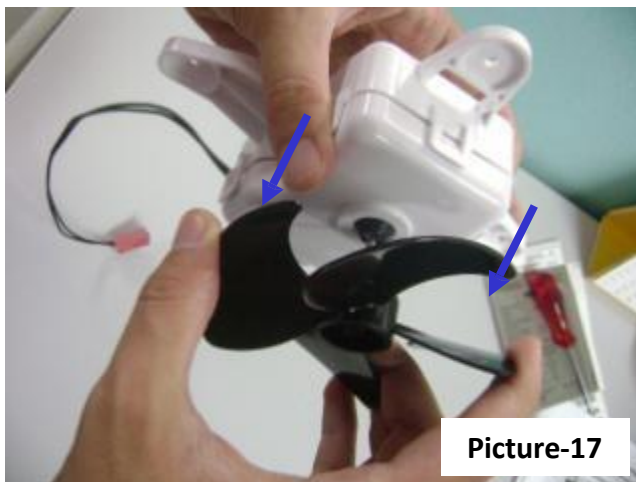
WHITE GOODS	NO-FROST-ELECTRONIC	CUSTOMER SUPPORT
	FREEZER COMPARTMENT	

### Replacement of Fan Motor



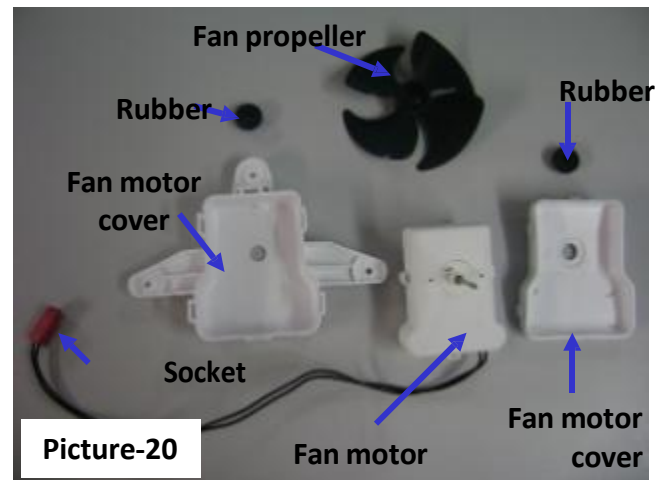
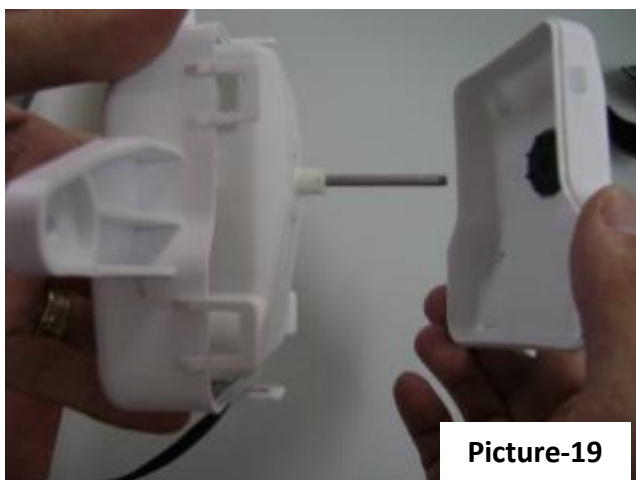
Remove the fan motor connector (Picture-15) (pink connector)

Unscrew the three fixing screws on the fan motor. (Picture 16)



Remove the fan motor propeller by pulling. (Picture-17)

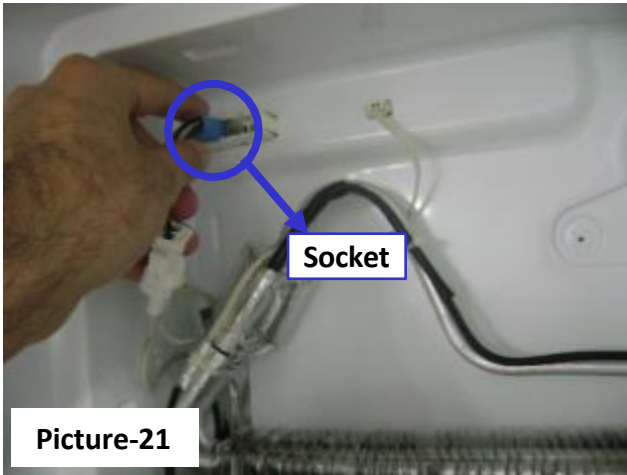
Open the fan motor cover from fan motor cover by flexing from two sides. (Picture-18 / Picture-19)



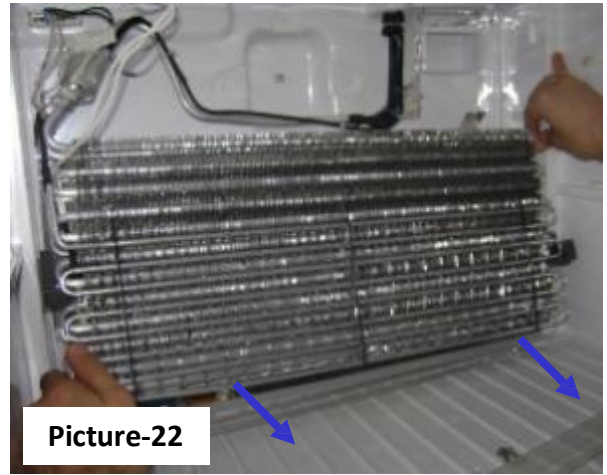


WHITE GOODS	NO-FROST-ELECTRONIC	CUSTOMER SUPPORT
	FREEZER COMPARTMENT	

### Replacement of Fin Evap Group

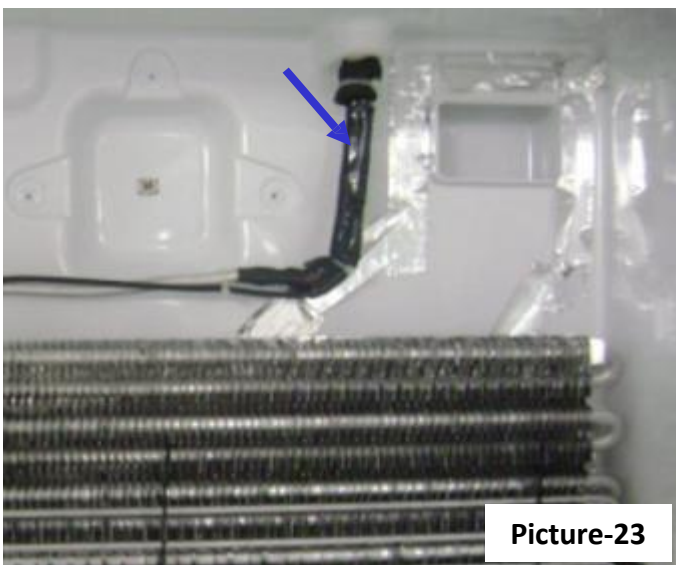


Remove the fin evap connectors.  
(Blue connector) (Picture-21)

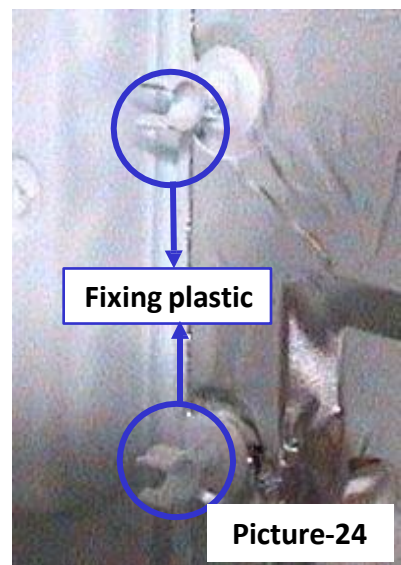


Lift up the fin evap by holding from both sides and release it from the plastic. Then pull it at yourself and take it out.(Picture-22)

**NOTE :** In 590 UHS refrigerators, fin evap heater has one more row and It is put in water evacuation container. It should be taken into account when removing the fin evap



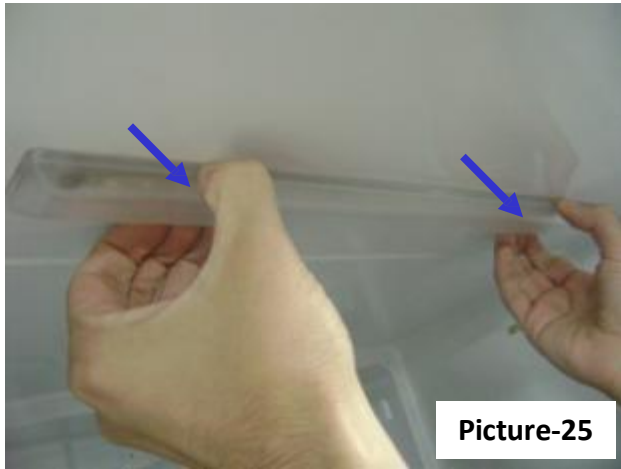
During the Fin evap replacement , Pipes should be cut from the place on the Picture. (Picture-23)  
Evap inside-outside macarons should be attached on the pipes connection place during the evap fixing.



**NOTE:** Evap should not be moved upside down Otherwise fin evap fixing plastic could be broken. (Picture-24)

WHITE GOODS	NO-FROST-ELECTRONIC	CUSTOMER SUPPORT
	FREEZER COMPARTMENT	

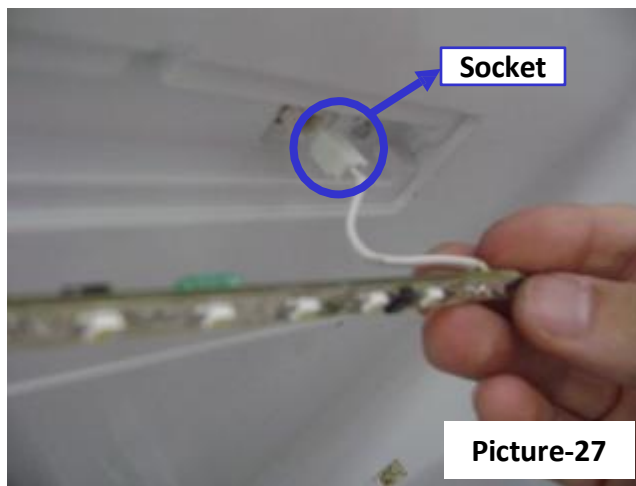
### Replacement of Freezer Led



Picture-25



Picture-26



Picture-27

Remove the Freezer led cover. (Picture-25)

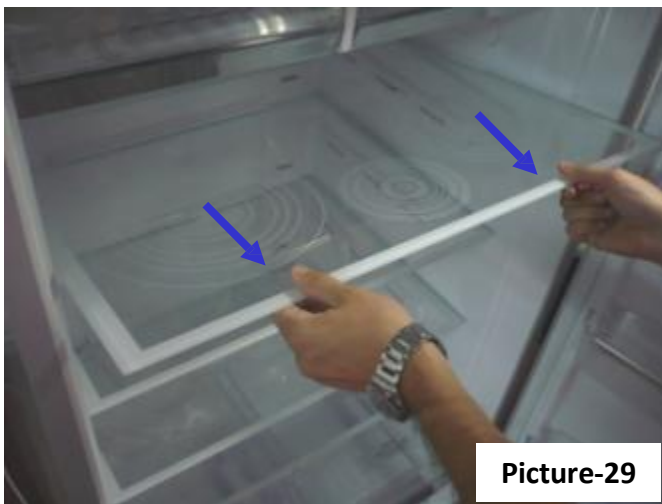
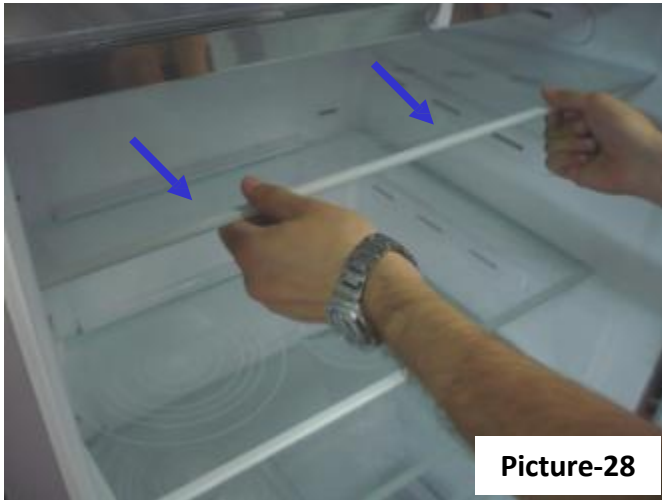
Unscrew the two fixing screws on the Led (Picture-26) and take off the connector (Picture-27)

**NOTE:** Led lights won't work if they are fixed reversely.



WHITE GOODS	NO-FROST-ELECTRONIC	CUSTOMER SUPPORT
	REFRIGERATOR COMPARTMENT	

### Replacement of Refrigerator Glass Shelf

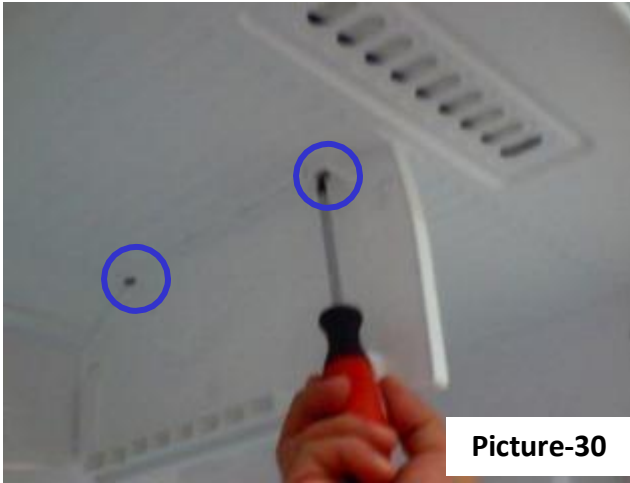


Pull and take the glass shelf out by lifting up as in the picture (Picture-28) . (Picture-29)

**NOTE:** It must be assembled that the serigraphies(paint) should be one under the other.

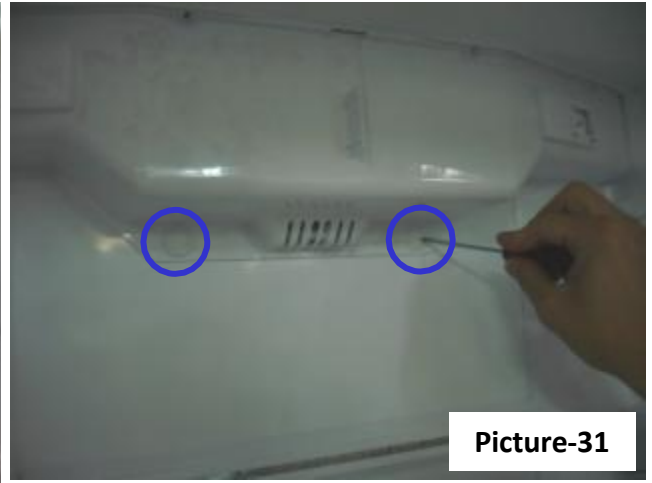
WHITE GOODS	<b>NO-FROST-ELECTRONIC</b>	<b>CUSTOMER SUPPORT</b>
	<b>REFRIGERATOR COMPARTMENT</b>	

**Replacement of Refrigerator Multiflow Cover Group :**



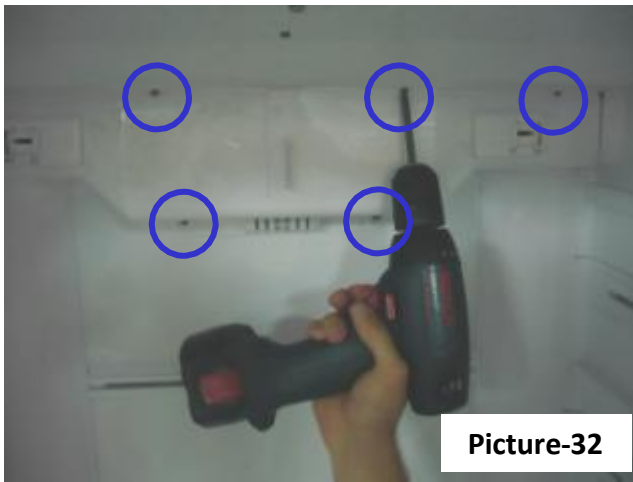
**Picture-30**

First, take the chiller shelf covers and chiller shelves out . Unscrew the Chiller shelf rail screws (Picture-30)



**Picture-31**

Remove two screw caps on refrigerator multiflow cover. (Picture-31)

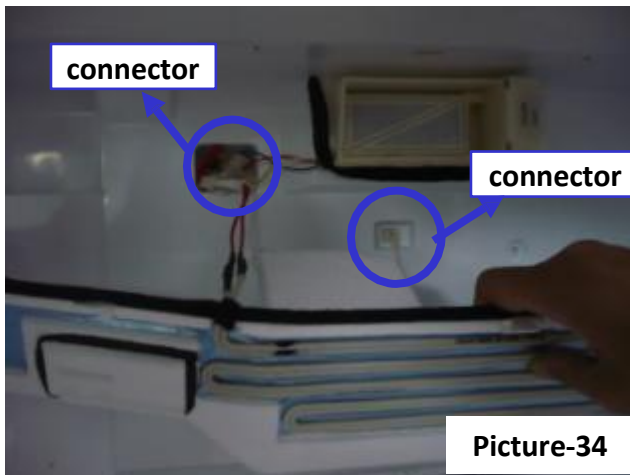


**Picture-32**

Unscrew the fixing screws on the refrigerator multiflow cover (Picture-32)  
Take it out by pulling. (Picture-33)



**Picture-33**

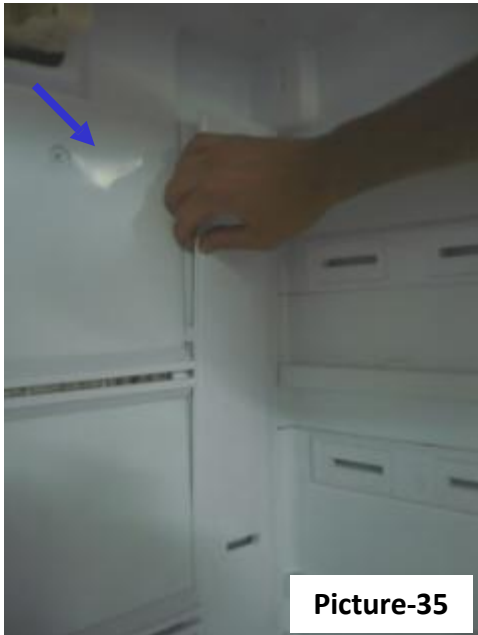


**Picture-34**

Remove the cooler sensor connector and take the refrigerator multiflow sytrofoam by pulling to the front,. After taking the refrigerator multiflow sytrofoam out, disconnet the dumper motor connector . (Picture-34)

WHITE GOODS	NO-FROST-ELECTRONIC	CUSTOMER SUPPORT
	REFRIGERATOR COMPARTMENT	

### Replacement of Refrigerator Multiflow Corner



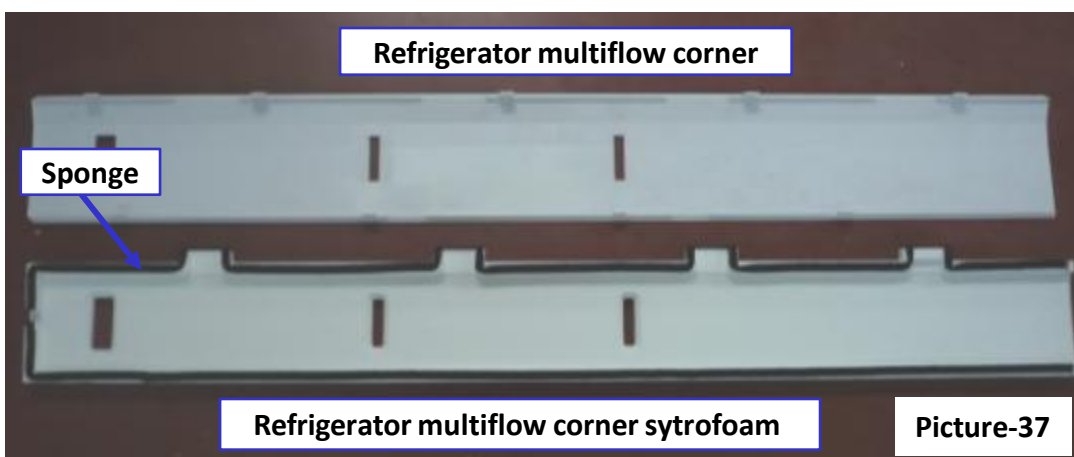
Picture-35



Picture-36

There are 2 refrigerator multi flow corner on the right and left back corner of the refrigerator section. First remove the nail of the refrigerator multi flow corner from the cabinet by your finger.

Then pull it to the bottom and remove it. (Picture-35) Take the underside corner airflow styrofoam out without harming. (Picture-36)



Picture-37

Be careful not to damage the styrofoam and the sponges.. (Picture-37)

WHITE GOODS	NO-FROST-ELECTRONIC	CUSTOMER SUPPORT
	REFRIGERATOR COMPARTMENT	

### Replacement of Refrigerator Multiflow Side



Picture-38



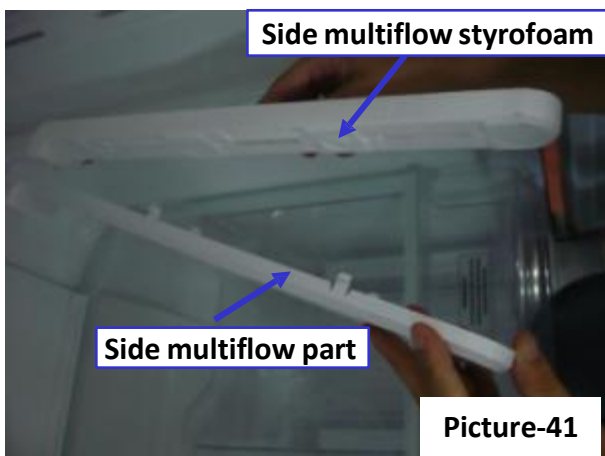
Picture-39



Picture-40

Every shelf has multiflow side parts in its left and right side. Take the side multiflow nails out of its places with screwdriver. Remove the side multiflow part by pulling to the front.

(Picture-38 / Picture-39 / Picture-40)

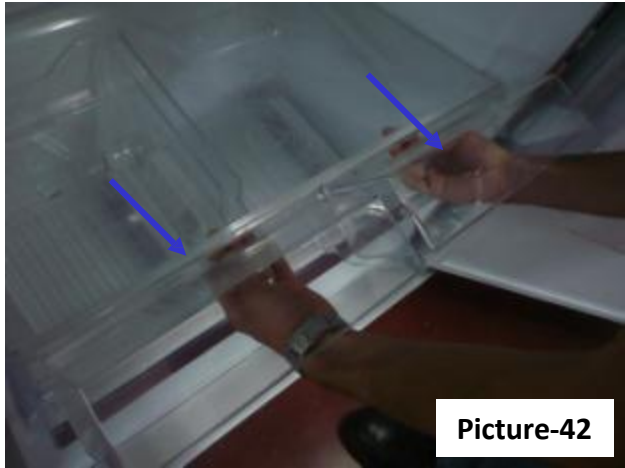


Picture-41

Be careful not to damage the nails of the refrigerator multiflow side and the refrigerator multiflow styrofoam.(Picture-41)

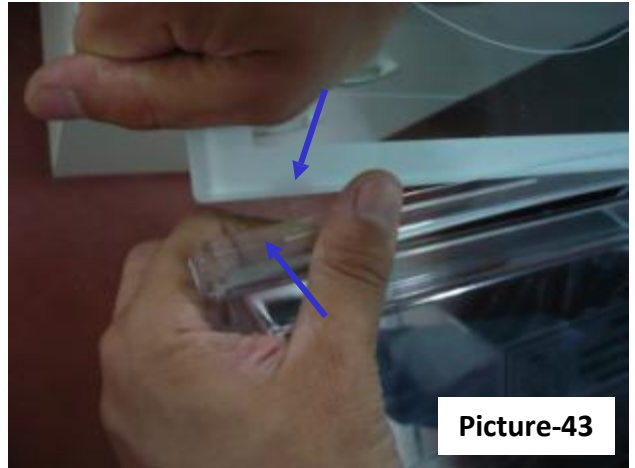
WHITE GOODS	NO-FROST-ELECTRONIC	CUSTOMER SUPPORT
	REFRIGERATOR COMPARTMENT	

### Replacement of Crisper



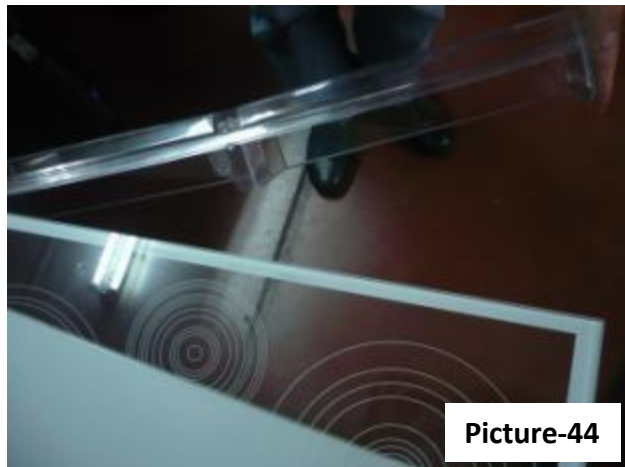
Picture-42

Lift the crisper up as shown in the picture and pull and take it out. (Picture-42)

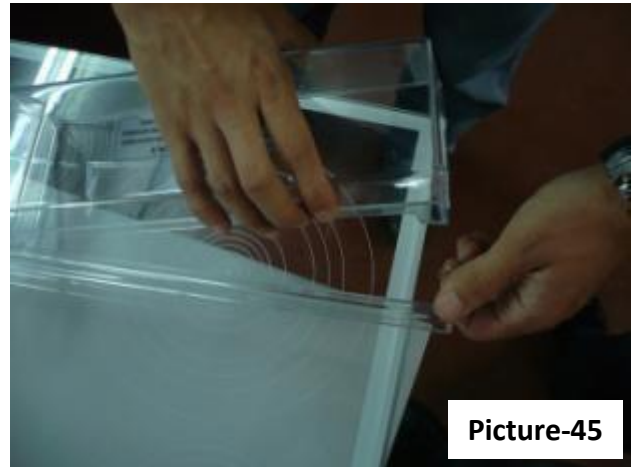


Picture-43

Pull the crisper cover profile as shown in the picture and take it out. (Picture-43)

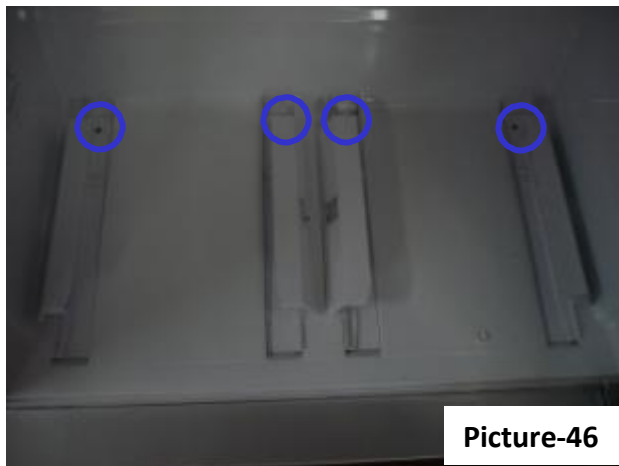


Picture-44

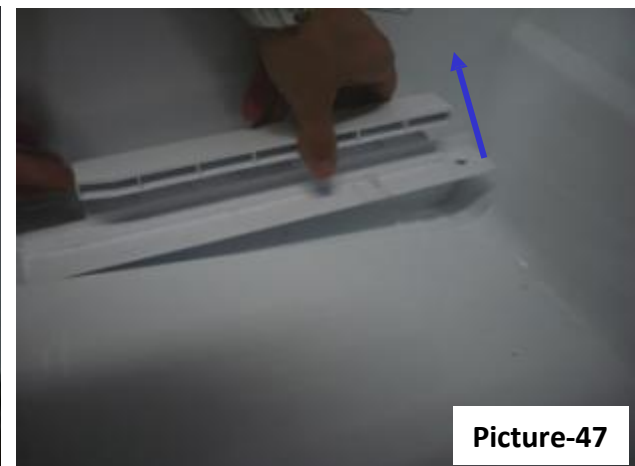


Picture-45

### Replacement of Crisper Rail Profile



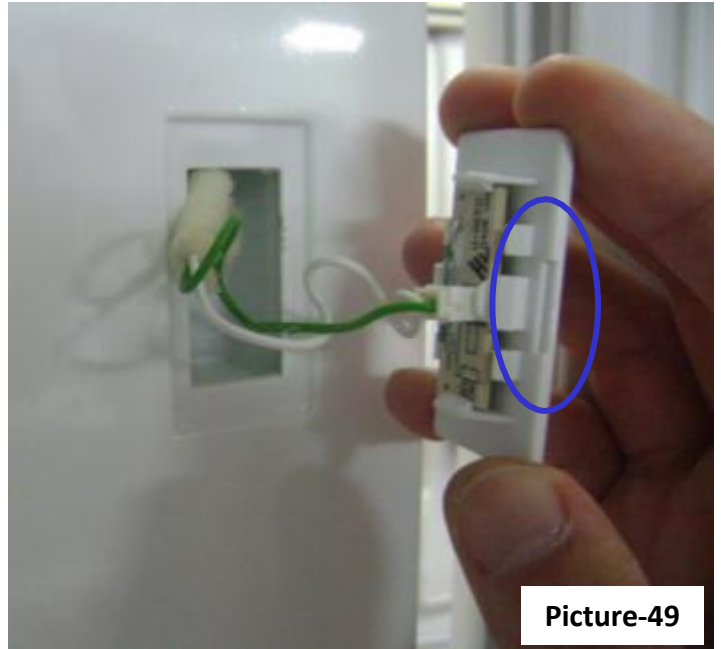
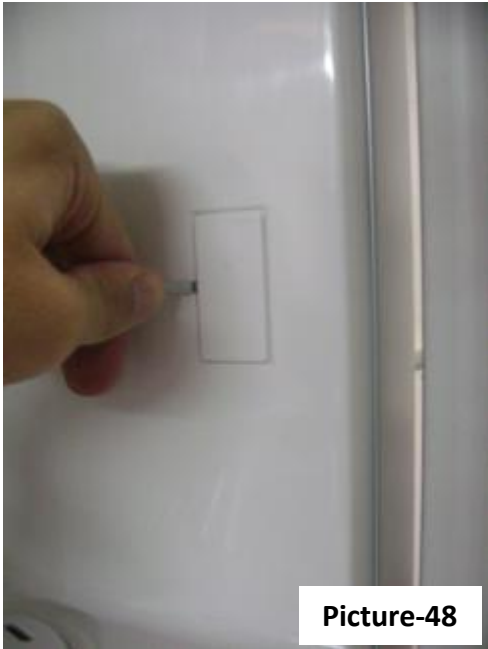
Picture-46



Picture-47

Unscrew the fixing screws on the profile (Picture-46) and remove the profiles by pushing up. (Picture-47)

WHITE GOODS	NO-FROST-ELECTRONIC	CUSTOMER SUPPORT
	REPLACEMENT OF REED SWITCH	



Take the reed switch out of its place with a screwdriver. (Picture-48) Then Disconnect the connectors of the Switch and remove it. (Picture-49)

**NOTE:** Reed Switch is a very sensitive miniature electronic card. So during the assembly and disassembly be carefull not to damage it.

During the disassembly of the reed switch, there is a step on the edge of the plastic part which provides easier dissassembly and by that tool it can be taken out from the same place every time.

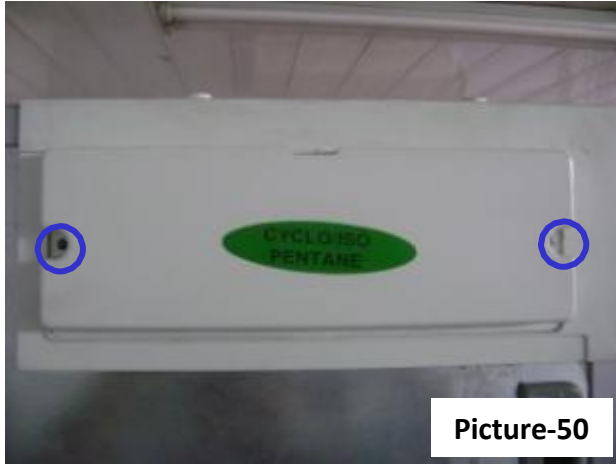
It must be assembled as this step should be in the invisible(inside of the refrigerator)part. Otherwise The distance which the lamp turn on/off may change.

After the assembly or replacement the service should check if the reed switch is damaged by giving energy and opening and closing the door.



WHITE GOODS	<b>NO-FROST-ELECTRONIC</b>	<b>CUSTOMER SUPPORT</b>
	<b>REPLACEMENT OF ELECTRONIC CARD</b>	

### Replacement of Electronic Card



Picture-50



Picture-50

Unscrew the 2 fixing screws on the cover for replacing the electronic card which is in the right back corner of the freezer part. (Picture-50) Take the cover out by pushing kindly from upside and downside. (Picture-51)



Picture-52

Pull the electronic card out kindly without damaging cords and card. Disconnect the connectors and get the card out. (Picture-52)

WHITE GOODS	<b>NO-FROST-ELECTRONIC</b>	<b>CUSTOMER SUPPORT</b>
	<b>REPLACEMENT OF DOOR GASKET</b>	

### Replacement of Door Gasket

Pull the gasket towards with the help of a screwdriver as shown at Picture-53.  
Slowly pull the rest of the gasket and completely remove the gasket from door. (Picture-54)



**Picture-53**



**Picture-54**

Take the new gasket. Starting with upper right corner , press on the gasket until it fits to its place. (Picture-55) Place the other sides of the gasket with the help of your thumb. (Picture-56)



**Picture-55**



**Picture-56**



WHITE GOODS	<b>NO-FROST-ELECTRONIC</b>	<b>CUSTOMER SUPPORT</b>
	<b>REPLACEMENT OF DOOR GASKET</b>	

### Control After Replacement of Door Gasket

After the replacement check if there any non-fitting point on the gasket. Also check if there any opening at the gasket while the door is closed. If so that might cause condensation/icing or insufficient cooling/freezing. To prevent this soften the form of the gasket with the help of a hair dryer or hot water and make sure that all points are closing perfectly. (Picture-57/58)



**Picture-57**



**Picture-58**

WHITE GOODS	<b>NO-FROST-ELECTRONIC</b>	<b>CUSTOMER SUPPORT</b>
	<b>REPLACEMENT OF DISPLAY</b>	

## Replacement of Display Panel *(Warning: Make sure the unit is unplugged.)*

1. First ,stick a tape on the corner of display to prevent any scratches. (Picture-59)



**Picture-59**

2. Take out the display panel cover by using a sharp/thin tipped tool. Try to stretch it from one side then remove it with your hand by pulling forward.(Picture-60)



**Picture-60**

3. Take out the socket from the connector and remove the display panel group. (Picture-61) , remove the connector (right) on the display card and connect the other cable (left) which is loose at the back. (Picture-62)



**Picture-61**



**Picture-62**

WHITE GOODS	NO-FROST-ELECTRONIC	CUSTOMER SUPPORT
	DISPLAY	

