

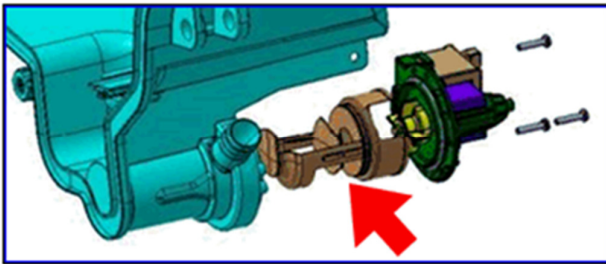
WELDED WASHING GROUP EXCHANGE. E20 ALARM ON DISPLAY. WATER DRAINAGE NOT WORKING.

DESCRIPTION:

If there is no particle filter in washing group water will not be drained and E20 alarm will appear on display.

SOLUTION:

During exchange of welded washing group with integrated pump body it is necessary to move filter from old WG to new one.



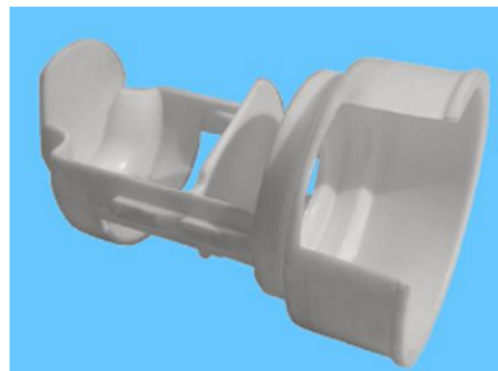
1. Particle filter position.



2. Filter extracted from pump body.



3. Remove filter from old washing group.



4. On the side of filter there are guidelines to allow easier assembly and prevent incorrect insertion.



5. Insert filter into new washing group. Make sure filter is fully inserted. If the filter is not inserted properly appliance will return alarm code E21 (service mode).

MODELS INVOLVED:

All front loaded washing machines with welded washing group with integrated pump body.

REVISION:

Revision	Date	Description	Author	Approved by - on
00	09/2014	Document Creation	Krzysztof Łazowski	Adam Słoma – 22.09.2014