

LEAKAGE FROM THE BACK OF YOT TOP LOADED WASHING MACHINE.

DESCRIPTION:

After finishing the cycle and opening of lid cover some water remains from lid innerliner may drip through gap between hopper and lid cover. Water then accumulates in drip tray area under electric valve. After several subsequent washing cycles water level in drip tray may rise. This can lead to overflow through the hole in back of appliance.



Water dripping way.



Water drip tray area.

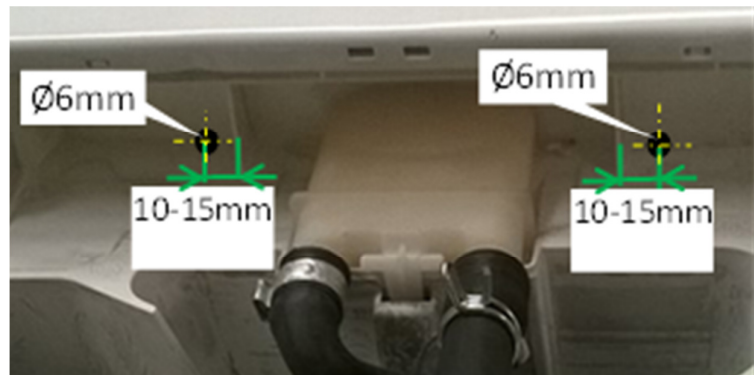


Leakage through back side of appliance.

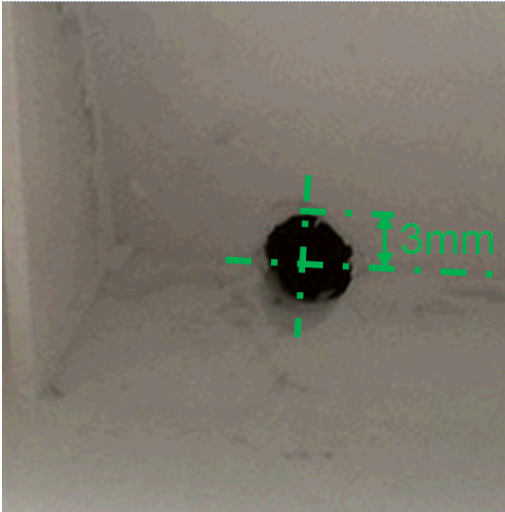
SOLUTION:



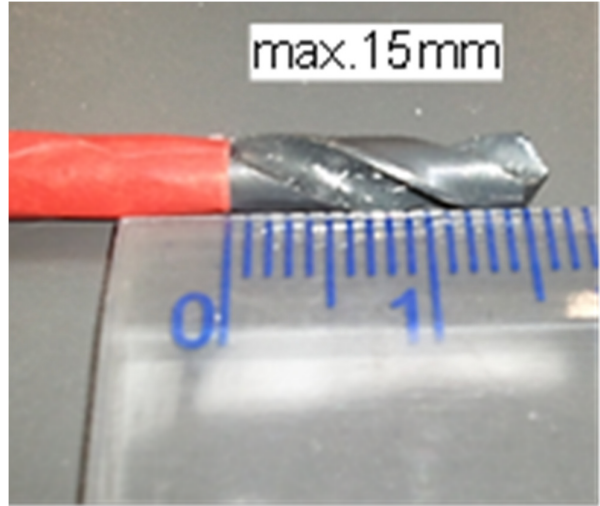
1. Remove control panel (follow instructions from service manual).



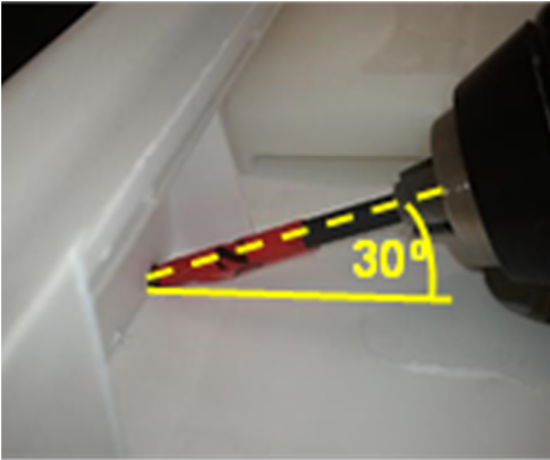
2. Mark drilling places in accordance with above picture.



3. Centre of the hole should be located on the lower edge of the partition.



4. Mark on the drill maximal drilling depth (max 15mm).



5. Drill marked holes under the angle of 30°.



6. Clear the holes and appliance from drilling leftovers.

MODELS INVOLVED:

All YOT top loaded washing machines.

REVISION:

Revision	Date	Description	Author	Approved by - on
00	06/2014	Document Creation	Krzysztof Łazowski	Adam Słoma – 27.06.2014